

TexasArchitect



KUP-A-JOES

Problem: *Dollars and cents.*



KUP-A-JOES



Solution: *Azrock Vinyl Composite Tile.*

Azrock VCT gives you
33 new colors to coordinate on a budget.

Azrock VCT gives you control over two of the most important aspects of any application – color and budget. Now with 120 gorgeous colors and styles to choose from (90 standard-priced, 68 premium-priced), the only thing you don't have to control is your imagination.

For more information call an Azrock Flooring Consultant at 1-800-921-1717 or visit our web site at www.domco.com.

AZROCK
THE DOMCO TARKETT GROUP

Are you aware of all the member benefits available through the AIA Trust?

Visit us on the web at:
www.theaiatrust.com



Sponsored by

AIA Trust

Member Insurance &
Financial Program

AIA Trust - For Every Risk You Take

[About these Products/Services](#)

[Register](#)

[Contact Us](#)

[Back to Main Site](#)

[Home](#)

Healthcare Insurance

- **What You Should Know**
- **Evaluate Your Benefits**
- **Download Insurance Forms**
- **Tax Us**
- **More Products & Services**
- **Business Insurance**
- **Retirement Program**
- **Professional Liability Insurance**
- **Auto & Home Insurance**

Healthcare Insurance



High Deductible Catastrophic Plan - MSA Qualified

A group plan helps you qualify for some of the best coverage available. Do you know what your medical benefits are? Do you know how to make sure you take the best advantage of your coverage?

[More Info](#) Learn more about the coverage available to you.

Overhead Expense



AIA Trust Business Overhead Expense Plan

If you can't work because of an illness or injury, how will you pay the rent or mortgage, utilities, salaries, and other business expenses? With a Business Overhead Expense Plan.

[More Info](#) Learn more about the coverage available to you.

Disability Income



AIA Income Guard Disability Insurance

Would your paycheck continue if you become disabled? It happens to more and more Americans every year. Help protect yourself and your income, your most valuable asset with Disability Income Insurance.

[More Info](#) Learn more about the coverage available to you.

AD&D



AIA Trust Accident Plan

An accident happens, suddenly your financial situation is drastically affected. With Accidental Death & Dismemberment Insurance, you're protected around the clock, around the world.

[More Info](#) Learn more about the coverage available to you.

or call us toll-free at:

1-800-255-8215
(plan information is available 24-hours a day)

www.theaiatrust.com - your complete online source for member insurance and financial program information!

www.theaiatrust.com

The Stone that Angels Are Made of...

Fort Worth is now home to angels made from Texas Quarries' Cordova Cream limestone, the material of choice for fine buildings like the Nancy Lee & Perry B. Bass Performance Hall. Texas Quarries is proud to have been a part of creating Texas' newest architectural landmark.

Nancy Lee & Perry B. Bass
Performance Hall, Fort Worth
Architect: David M. Johnson
Architectural Services,
Washington, DC
General Contractor:
Construction, Dallas
General Contractor, Fort Worth
Construction Group



A Division of
Fuehrlein Building
Products Corp.,
a Justin Company

Texas Quarries

512-258-1474

Circle 16 on the reader service card



TexasArchitect

WATERGALL

- 26** **Material Concerns**
by *W. MARK GUNDERSON*
- 30** **Stately and Sustainable**
by *LAWRENCE SPECK, FAS*
Robert E. Johnson Legislative Office Building, Austin
Page Southerland Page
- 34** **Three in a Row**
by *GERALD MOORHEAD, FAS*
Yupon Place Townhomes, Houston
Para Design Group, LTD.
- 38** **Clearly Connected**
by *SUSAN WILLINGTON*
Clear Channel Communications Corporate Headquarters,
San Antonio
Overland Partners
- 42** **Creative Composition**
by *DEBRA KACER*
Smith Photography Studio, Houston
Natalie Appel + Associates Architects
- 46** **History Reflected**
by *DANNY BOULTWHOUSE*
TxDOT Travel Information Center, Laredo
Ashley Humphries & Sanchez

- 5** **Editor's Note**
- 12** **News**
- 16** **Calendar**
- 20** **Preservation**
Historians Rescue 150-Year-Old Kim
- 21** **Design**
Teahouse Reinterpreted
- 50** **Portfolio**
Healthcare Facilities
- 52** **Special Section**
Cladding & Exterior Finishes
- 64** **Terminus**



(on the cover) Yupon Place Townhomes, Houston, photo by Westler + Handaway.
(above) Clear Channel Communications Corporate Headquarters, San Antonio, photo by Paul Barlogy.

UPCOMING ISSUES

We invite submissions of project and story ideas for upcoming issues of *Texas Architect*.

November/December 2001—"Public Spaces"
(deadline: June 4th)

If you have ideas for "News" call us at 512.478.7386, fax to 512.478.0528, or e-mail to vsbarpo@texasarchitect.org.

www.texasarchitect.org

Offering the very best
quality, selection, service

And now US Brick offers you even more! New colors, textures and sizes are now available from Richtex Brick, Boren Brick and our new Opden 2 plant.

To locate a showroom near you,
call 1-888-US Brick or visit us at
www.usbrick.com.



Circle 11 on the reader inquiry card.

Recruiters for the Architectural Profession

Ready for a New Job?
Call Toll-Free
1-877-717-6007

We have GREAT JOBS
available with the finest
architectural firms!

- All fees are paid by the hiring firm.
- Placements for all levels of experience.
- The right fit...right now.
- Positions Nationwide

Confidential
Ethical
Professional

architectfinders
INCORPORATED

1919 LBJ Freeway, Suite 1220 Dallas, Texas 75234

Phone 972-888-6007 ■ Fax 972-919-6178

www.architectfinders.com ■ jiffrey@architectfinders.com

Placing Quality People with Quality Firms

Circle 206 on the reader service card

TexasArchitect

May/June 2000

Volume 51, Number 3

Texas Architect (ISSN 0040-4179) is published seven times per year (bi-monthly) and in April by the Texas Society of Architects (TSA), 815 Congress Ave., Suite 970, Austin, Texas 78701, www.texasarchitect.org. TSA is the official Texas state organization of the American Institute of Architects (AIA). Copyright 2000 to the Texas Society of Architects.

David Lonsdale, Hon. AA
EXECUTIVE VICE PRESIDENT

Juldy Dazets
ASSOCIATE PUBLISHER

Stephen Sharpe
EDITOR

Adam Feltner
ART DIRECTOR

Bobby Howard
CIRCULATION MANAGER

Carolyn Baker
ADVERTISING REPRESENTATIVE
CIRCULATION

TSA PUBLICATIONS COMMITTEE

Bill Reeves, AA, San Antonio Chapter; Gerry Boudinghouse, AA, Dallas; Rob Clark, AA, Beaumont; Lawrence Connolly, AA, Midland; Elizabeth Dales, AA, Austin; W. Glenn Fink, Houston; James Grillo, AA, San Antonio; Jeff Fisher, AA, Longview; David Kuttler, FRA, Corpus Christi; Ed Suttles, AA, El Paso.

CONTRIBUTING EDITORS

Rebecca Cohen, Austin; David Dixon, Dallas; Stephen Fox, Houston; Lisa Semmel, Austin; Mike Drenning, San Antonio; Nestor Incepcion, AA, Dallas; Barbara Kuehn, Fort Worth; Max Levy, AA, Dallas; David Woodhead, FRA, Houston; Frank Welch, FRA, Dallas; Wilco Winters, AA, Dallas; David Woodcock, FRA, WFA, Corbridge Station.

TSA OFFICERS

Bill T. Wilson, AA, Corpus Christi, President; Bruce Bergert, FRA, Dallas, President-Elect; James Saxon, AA, Fort Worth, Vice President; John Naylor, FRA, Vice President; Jeff Pitzer, AA, Longview, Vice President; James Hill, AA, Houston, Vice President; Ray Loney-Bell, AA, Secretary; Mike Hyslop, AA, Austin, Treasurer; Bill Smith, FRA, Dallas, and David Roberts, FRA, Houston, AA Directors; David Conacher, Hon. AA, Austin, Executive Vice President.

TSA BOARD OF DIRECTORS BY CHAPTER

Pupard Rangan, AA, National Chapter; Green Bottom, AA, Amarillo Chapter; Heather McKinney, AA, Austin Chapter; Chad Grubb, AA, Brown Chapter; William Holland, AA, Corpus Christi Chapter; Robert James, AA, Dallas Chapter; Ed Suttles, AA, El Paso Chapter; Alan R. Magan, AA, Fort Worth Chapter; Paul Viscotti, AA, Houston Chapter; Steve Sprague-Hess, AA, Laredo Chapter; Steve Sipes Chapter; May Orles, AA, Lubbock Chapter; Perry Thompson III, AA, Northwest Texas Chapter; Bill Cotton, AA, San Antonio Chapter; Rob Clark, AA, Southeast Texas Chapter; Larry Neal, AA, Waco Chapter; Anthony Turner III, West Texas Chapter; Troy Swain, AA, Wichita Falls Chapter; Lawrence Spick, FRA, Austin; Executive Member Robert Cory, AA, Public Member Rodrick Wang, AA, AA International Member.

Periodicals postage paid at Austin, TX, and additional mailing offices. POSTMASTER: Send address changes to Texas Architect, 815 Congress Ave., Suite 970, Austin, Texas 78701-2443. Phone: (512) 476-1386. Printed in the U.S.A.

Subscription price is \$20 per year for TSA members, \$25 for non-members with addresses in the continental U.S. Reproduction of editorial content without written permission is prohibited. Use of names and images of products and services in other editorial or advertising does not constitute an endorsement by TSA or AIA, nor does content necessarily reflect an official opinion of either organization. TSA is indexed by the Army Index of Architectural Periodicals, available in major libraries.



Skathed in titanium, Frank Gehry's Guggenheim Museum in Bilbao, Spain, illustrates the predicament architects face when specifying materials; photo by Frank D. Welch, AIA.

A RECENT NEWS ITEM IN THE NEW YORK TIMES, "FACES TURN RED Over Guggenheim's Bilbao Blotches," chronicled the finger-pointing provoked by brown stains that have unexpectedly appeared on the shimmering titanium skin of Frank Gehry's iconic art museum. The paper-thin titanium sheets are "absolutely immune to environmental attack," according to the manufacturer. But, to live up to that claim, the sheets must be properly cleaned at installation, and Gehry told the Times that some of the 42,875 sheets were not properly cleaned. Efforts are now underway to erase the blotches. Unfortunately for Gehry, the tarnish may spread to the architect if the cleansing proves less than successful.

For architects contemplating an excursion along the cutting edge, Gehry's Bilbao Guggenheim is suitably illustrative. Designers such as Gehry take the latest products of technical industry and push them to their limits, sometimes a risky undertaking made even riskier with a high-profile public project. The danger is that expectations may not match up with reality, that despite the architect's diligence to provide quality assurance, the finished project is not as charming as the model unveiled at the press conference or as comparable to the sample panel viewed in the field.

Innovative materials carry with them the inherent chance of possible failure; however, Gehry probably never considered that the titanium sheets, or their installers, would not perform satisfactorily. But, had Gehry specified a less exotic material rather than titanium, would he have achieved the same glimmering contours and sensuous drama? Or, had he opted for a less sumptuous material, would the museum have become the international sensation that today attracts design-savvy pilgrims the world over to visit such an out-of-the-way place?

The Guggenheim Museum in Bilbao, when opened in 1997, instantly captured the public's attention and its glamorous silhouette reinvigorated the popular debate of architecture's relevance to society. The essence of the new museum is sensed at one's first glimpse of its sleek skin. Gehry's choice of a titanium, blentished or not, has proven to be a real winner, and a striking example of how materials used to construct a building profoundly affect one's experience of architecture. Naturally, the architect's choice of materials is a long-lived decision, one that inevitably will revisit the designer as years pass and the structure's appearance changes over time. That decision will also remain with the architect as he or she plans future projects. In Gehry's case, the brouhaha resulting from the blentished titanium sheets on the Bilbao museum reportedly has changed his mind about cladding the proposed Solomon R. Guggenheim Museum in Manhattan with the same material. Having described the attention focused on the stains in Bilbao as "a tempest in a teapot," Gehry told the Times that his ideas for the skin no longer correspond with his architectural model, which depicts a structure clad modestly with titanium. "I don't think we'll ever use titanium," Gehry told the Times. "I don't think we'll have the money to use titanium, so don't worry about it."

STEPHEN SHARPE

We are specialists in the processing, fabrication and packaging of pre-finished architectural metals. Our extensive inventory features the industry's largest selection of colors and gauges in stock. Our four full-service plant locations allow us to meet the most demanding lead times at competitive prices. Put our experience to work on your next project.



Elk Grove Village, IL (1-800-767-2310 or 1-847-229-7110 FAX: 1-800-972-7750)

Other Plant Locations: Jacksonville, FL (1-800-288-1600) Kennesaw, GA (1-800-272-9482) Tyler, TX (1-800-441-8661)

IT'S ALL IN THE FINISH...

Circle 83 on the reader service card

Creating the Sense of Place

When your setting calls for the warmth and beauty of traditional lamp posts, you'll find the world's largest selection at Spring City: exquisite posts and traffic controls, sand-cast in iron or aluminum, all featuring state-of-the-art photometric performance. And a staff of expert designers ready to work with you



to create new custom styles as well.

You'll be in good company with Spring City. American towns, cities, and universities have chosen Spring City more often than any other brand. Since 1843,



(610) 948-4000

www.springcity.com

Circle 720 on the reader service card

Raba Kistner

Investigations, Consultations, and Prudent Solutions.

- Asbestos/Lead Paint
- Construction Testing & Observation
- Environmental Consulting
 - Molds and fungus identification
- Forensic Consulting
 - Building structure evaluation
- Geotechnical Engineering
- Pavement Consulting

A Texas Company with Three Decades of Experience

www.rkci.com

210-699-9090

San Antonio, TX

Austin, TX
Brownsville, TX
El Paso, TX
Laredo, TX

McAllen, TX
Las Cruces, NM
Cd. Juarez, MEX
Monterrey, MEX

Circle 67 on the reader service card

"Masonry Success Stories" Design Flexibility



Project: Arlington Memorial Hospital South

Location: Arlington, Texas

Principle Architect: HKS, Inc. - Norman Morgan, Architect

Masonry Contractor: DMG Masonry

Masonry Suppliers: Acme Brick Co., Palestine Concrete and Tile Co. and TXI, Inc.

Design Flexibility Challenge: Our challenges for this project were to bring the enormity of the building down to a more human scale, to use materials that made the building less institutional and to incorporate a material that counterbalanced the coldness of the glass used in the project. The building is also located in a more residential area and we needed to find materials that blended well with that environment.

Design Flexibility Solution: Brick has an advantage over other materials because of the wide variety of color and texture that it has. It provides an inviting atmosphere, whereas other materials create an environment of detachment and coldness. We used three different hues of red brick to create a warm, comforting and calm atmosphere. A more human environment was created through the relation between the senses and the texture and color of the material. The brick provided a certain level of comfort because it blended with the community and reduced the great size of the building to more human scale.




Masonry.

Exceeding your expectations.
Satisfying your clients.

Before making your material decision,
call the Texas Masonry Council at 888/374-9922.

Circle 207 on the reader service card



NEG
METAL OXIDE COATING

The Inside Story

Solar Reflective Glass Block

The metal oxide coating is **INSIDE** the glass which eliminates problems currently experienced with outside-coated glass block, along with superior sun-blocking performance!

For more information, or to place an order, call
(800) 660-0427
Circle 25 on the reader service card

Advanced Glass Block
7250 Wynnpark • Houston, TX 77008
Phone: (800) 660-0427
Fax: (713) 880-2988

Your South Texas Building Partner for Over 50 Years.



Valley Block & Brick supplies a diverse range of quality masonry products and a bonus that no one can manufacture—our people—local professionals serving you and your project.

- Standard and Architectural CMU
- Face Brick and Masonry Accessories
- Local Expertise and History

Valley
BUILDING SUPPLY
BLOCK & BRICK

Phone: 956-252-2122 • 11 E. PRICE on Hwy. 281
San Antonio: 956-339-2122 • Monday 10 & PM 7:30
Dallas: 956-225-1111 • 12011 Fossil Dr.

Circle 3 on the reader service card

texasarchitect.org

Regional Focus an Inspiration

The East Texas issue (March/April 2001) of *Texas Architect* effectively captured the diversity of work going on here. More importantly, it focuses on projects that were successful regional interpretations of our area. In discussions with my colleagues, we've agreed that *TA* could become an important instrument for an architect to use to help move his or her clients toward a regional sensibility. I know that this issue will be a great resource for us. More importantly, it has inspired our firm to investigate our architecture more critically. Thanks.

Justin Paul Howard
Beaumont

CONNECTIONS Several items in the last issue of *TA* contained errors. Corrections follow.

The name of an architecture firm, Vidaud + Associates, Inc., listed as a consultant in the news story on Terminal D at Dallas/Fort Worth International Airport (p. 13) was misspelled, and the list was incomplete. To date, the firms contracted are:

Terminal D Building—HKS Inc., HNTB Corp., Corgan Associates, Inc., Vidaud + Associates, Inc., T.S. Orendain Associates, Inc., Charles F. McMee, FRAIA, E. Evans Associates, Anthony C. Baker, Sundland Engineering Co., and TransSolutions

Terminal D Hotel—HKS Inc., HNTB Corp., Corgan Associates, Inc., and Vidaud + Associates, Inc.

Terminal D Parking Garage—Gresham Smith & Partners, Vidaud + Associates, Inc., T.S. Orendain Associates, Inc., and TransSolutions

Terminal D Skybridge—Vidaud + Associates, Inc., HNTB Corp., and Corgan Associates, Inc.

Central Utility Plant—AAE Architects

A juror listed in "Three Design Winners in Northeast Texas" (p. 17) was misidentified. The juror was Matt Morris, a partner at Lake/Flato Architects in San Antonio.

In "El Paso Recognizes Six Projects" (p. 20), the name of the architect for the El Paso County Juvenile Courts Facility was inadvertently omitted. It is Wigston Hojker Jeffrey Architects of Dallas.

The project team listed in "Rural Archetypes" (p. 26) for the Gilbert House in Lowland was incomplete. Working with Kai Giltsch, FAIA, was Roger Cooner and intern Emily Sing.

Texas Architect regrets these errors.

DESIGN WITH CONFIDENCE



8189-F Winkler
Houston, Texas 77017
Phone: 713/944-9716
Fax: 713/944-1723

635 Lanark
San Antonio, Texas 78218
Tel-Free: 800/677-6393
Phone: 210/599-6260

Unmatched Service

- You receive a level of technical support and guidance unavailable from any other glass block producer.
- We will arrange for drawing review and technical guidance, full sample selection, and provide support after the job is completed, if needed.
- Our Technical Service Department is available for technical advice, project design assistance, and plan review.



www.masonryglass.com

Texas Building Products, Inc.



Manufacturer of quality CMU's

- Spectra-Glaze™
- Burnished
- Rock Face

All units available in 16x16 and 16x24 sizes

(800) 368-1024

3281 Highway 108 • Strawn, Texas 76475
 Phone (254) 672-6262 • Fax (254) 672-6841
 Email: tbp@tbp.net

Circle 22 on the reader service card

The Natural Choice



Nothing else quite compares to the appeal of our Cordova Cream, Cordova Shell, and Lueders varieties of natural Texas limestone. Please call, fax, or email today for your copy of our portfolio of recent projects.



Texas Quarries

P.O. Box 820 Cedar Park, TX 78613
 TEL 800-792-1234 FAX 817-390-2404
 www.texasquarries.com
 lsaide1@aermebrick.com

Best Performance Wall, Fort Worth *Cordova Cream* *Shell*

Circle 18 on the reader service card

MARVIN

Windows and Doors

For more information, visit one of the centers listed below, or circle 28 on the reader inquiry card.

MARVIN WINDOWS PLANNING CENTER

A BMC WEST Company

AUSTIN MWPC Striping Blake 3400
 Stock Ave. Austin 78757 800/333-9203
 512/472-0955 Attn: Tom Braxwell

CORPUS CHRISTI 800/698-6618
 361/814-7000 Attn: Harry Armenia

DALLAS 2619 Lombardy Ln. Dallas
 75220 800/888-3667 214/351-1186
 Attn: Michael Nied

FORT WORTH 4455 Camp Bowie Rd #80
 Fort Worth 76107 800/955-9667 817/
 737-8877 Attn: Jill Buckley or Scott Pereth

LONGVIEW 1707 Loop 281 West
 Longview 75604 800/288-3667 903/
 759-9675 Attn: Linnie Robinson

LUBBOCK 5920 66th Street Lubbock
 79424 806/785-3363 Attn: Lance Ratliff

**MCALLEN BROWNSVILLE LAREDO
 FREDERICKSBURG KERRVILLE**
 800/698-6618 Attn: Harry Armenia

MIDLAND 3303 N. Midkiff, Suite 17B,
 San Miguel Square Midland 79705 915/
 520-5442 Attn: Lance Ratliff

SAN ANTONIO 1211 Arson Pkwy, Ste 106
 San Antonio 78216 800/698-6618 210-
 494-8889 Attn: Harry Armenia

LAS VEGAS 6370 W. Flamingo #118
 Las Vegas, Nevada 89103 702/362-6270
 Attn: Chris Lystala

PHOENIX 4841 South 36th Street
 Phoenix, Arizona 85040 800/558-8645
 602/438-1127 Attn: Saul Freeberg

TUCSON 800/558-8645 602/438-
 1127 Attn: Sean Hendrix

TULSA 800/283-6352 918/481-6352
 Attn: Gary Dawson

OKLAHOMA CITY 3211 Teakwood Lane
 Edmond, OK 73013 800/766-4690
 405/341-6775 Attn: Gary Dawson

SHREVEPORT 318/869-4220 Attn:
 Linnie Robinson



HOUSTON 16001 Tomball Pkwy. Houston,
 TX 77066 800/934-3502 281-440-9090
 Attn: Paul Evans

HOUSTON 8303 Kempwood Houston, TX,
 77080 713-467-9890 Attn: Paul Evans

Circle 28 on the reader service card

Windows make the village...



Lebrock Village, Texas Christian University, Fort Worth
architect F&S Partners, Dallas
contractor Linbeck Construction,
Fort Worth



"We designed this student housing village to have a warm, residential ambiance. Marvin Windows answered that challenge with windows that balance aesthetics and quality. Painted wood frames inside complement the home feeling that we wanted, and clad exteriors with insulating low-E glass with argon met our university client's demanding performance needs. Marvin had a clean approach to putting its windows together in a bay motif on the outside stair towers. Marvin's window assemblies gave us the most open effect possible."

— G. Allen Atkinson Jr., Principal-in-Charge, F&S Partners Inc.



No ordinary window family could fulfill the diverse needs of Lebrock Village, an 11-building residential campus. Marvin Windows' pebble gray Clad Ultimate double hung and fixed casement windows allowed architects to express a wide-ranging assortment of scales and opening sizes in one cleanly integrated system. From individual units to towering three-story bay assemblies, Marvin simply delivered. For long-lasting, durable performance, and design excellence, it's Marvin Windows! Beautifully made to order, one at a time!

**MARVIN WINDOWS
PLANNING CENTER**

A **AMC** **WINDOW** Company

The Ultimate Window Source

MARVIN 
WINDOWS AND DOORS

Made for you.



For a free product brochure or to speak with a Marvin Windows Planning Center professional, call your nearest location listed on the facing page or call 800-888-3667.

info@mcwest.com www.marvin.com

Abundance of Big Public Projects Alters Views of Corpus Christi	12
One Less Deanship to Fill	13
UT Austin Conference Explores Technology	13
New Owners Renovate Trost's El Paisano	16
Calendar	16
CRS Veterans Recall Glory Days	17

Abundance of Big Public Projects Alters Views of Corpus Christi

CORPUS CHRISTI The 2000 census figures showed that Corpus Christi, unlike other Texas cities up the road, such as Austin or San Antonio, had remained basically stagnant. Decades of slow and stunted growth have translated into a dearth of new construction, much less any exciting architecture for this relatively young city.

"Corpus Christi is a small town in many ways. It's not a place known for a history of great architecture," said local architect Bill Wilson, of WKMC Architects. "We don't have the same design awareness or appreciation for what architectural development can do."

But that may be changing: this city on the Gulf of Mexico is finally breaking out of its shell with an explosive increase in the number of large-scale public buildings either being planned or under construction near downtown. Several high-profile projects in the vicinity of the Art Museum of South Texas — itself a striking waterfront presence designed by renowned modernist Philip Johnson — alone are estimated to total about \$50 million. In all, these projects are catching the attention of nationally and internationally known architects, and giving the local architectural community confidence that relief from the city's cultural drought may soon arrive.

"It's just been delayed for so long," said John Dykema, another local architect. "We happen to have some architectural momentum. Given all that, hopefully there will be an impact on the overall impression people have of the town."

The current batch of projects also is expected to have a transformative effect on the city, not only in the physical impact on its skyline, but in how the local populace views the importance of good design. "Cities are built one project at a time," Wilson said. "The aggregate of that will ultimately decide what the place is. We can be a different place, a better

place, if we pay more attention to our buildings."

Arguably the greatest coup for the city is the hiring of Mexican architect Ricardo Legretta, last year's AIA Gold Medalist, to design a 27,000-square-foot addition to the Art Museum of South Texas. "In terms of the art museum, I expect it to have a tremendous impact on the city's architectural reputation," said Dykema, whose firm Bright and Dykemas Architects is representing Legretta. Legretta is a perfect

fit for Corpus Christi—his use of bold colors, courtyards, and transition spaces match the city's Mexican-influenced culture and semi-tropical climate.

Most recently, the city has completed a \$26 million federal courthouse that combines state-of-the-art courtroom technology with a traditional look. The 172,000-square-foot courthouse replaces its 13,000-square-foot, 84-year-old predecessor. Designed and built by Hartman-Cox Architects and WKMC Architects of Corpus Christi, the courthouse is located on Shoreline Boulevard, site of most of the city's architectural renaissance.

Another recent large public project, opened in September, is the Congressman Solomon P. Ortiz International Center, a 60,000-square-foot cruise ship terminal and conference center located at the mouth of the inner harbor. Designed by Richer Architects of Corpus Christi, the project for the Port of Corpus Christi is an adaptive reuse and addition to a circa-1970 cargo warehouse.

Other projects now underway include:

- An 8,000- to 10,000-seat multipurpose arena and enlarged convention center by Arquitectonica of Miami on the downtown waterfront. Arquitectonica brings major league credentials to the city, having designed arenas for the Miami Heat and Atlanta Hawks. The firm is working with Atlanta-based Thompson Ventulett Stainback & Associates. The \$35 million arena, which officials hope will lure major events here, was part of a bond package passed last year and is expected to be finished in 2003. "Architecturally it will be connected to the water," said Raymond Gignac, whose local firm, Raymond Gignac and Associates, is also working on the project.

- A 1,500-seat performing arts center for Texas A&M University Corpus Christi with Colleen Landreth Kramer Architects and Associates as architects of record. The local firm's Jerry Kramer said the project, now in the early stages of design development, will also respond to its waterfront setting. The project's design architect is New York-based Hardy Holzman Pfeiffer Associates. Construction is expected to be completed by early 2004.

- A \$26 million airport terminal to replace the city's existing dinosaur, which doesn't even have electronic monitors. The new terminal, designed by Gensler's Houston office, co-creators of the Austin-Bergstrom International Airport terminal, will feature open space for artwork, a lounge overlooking the runways, and a business center for meetings and computer access. When completed next spring, officials hope the airport will become the city's signature building.

- An addition to the Corpus Christi Museum of Science and History, neighboring Johnson's AMST, that includes a sixteenth-century Spanish ceiling.

JOHN SCHWARTZ

A model depicts Ricardo Legretta's addition to the Art Museum of South Texas; photo courtesy of AMST.



One Less Deanship to Fill

RELIEF: The recent selection of a new dean of architecture for the University of Texas at Arlington somewhat settles the current shuffling of deanships at the state's architecture schools. Martha Ellen LaGess, a Rice University graduate and partner of LaGess McNamara Architects in London, takes the helm of UT Arlington's School of Architecture in September. Her hiring leaves three other schools searching for new leadership, the latest being Texas Tech University's College of Architecture which joins Texas A&M University's Department of Architecture (part of A&M's College of Architecture) and the University of Texas at Austin's School of Architecture.

LaGess, one of four finalists for the dean position, is currently Unit Master with the Architectural Association, an internationally known private architecture school in London. A lecturer and visiting critic for many organizations and universities in Europe, Asia, and North America, she has 10 years experience as an educator. Her 16-year career as a professional architect includes working with James Stirling, Michael Wilford and Associates, and Kohn Pedersen Fox. Upon joining UT Arlington, LaGess will take over administrative duties from Interim Dean C. Lee Wright who plans to remain in the school's faculty.

Dean James White of Texas Tech notified the press early this year that he would step down from

the top post at the College of Architecture, saying he would stay on until the end of the 2002 spring semester to allow enough time to find a successor. White, who will return to teaching architecture at Tech, will have been dean five years at the time of his departure.

In College Station, a new department head at A&M is expected to be named soon. Dean J. Thomas Regan of the College of Architecture is scheduled to make an announcement this spring, following a vote by faculty members for their favorite among seven finalists. The new department head may start before the beginning of the fall semester. Interim Department Head Thomas L. McKittrick, FAIA, took the temporary assignment last fall after Department Head Julius Galbraith left to become director of the University of Texas at San Antonio's nascent School of Architecture. McKittrick said he plans to return to teaching at A&M once a permanent replacement is hired.

At UT Austin, the search continues for a new dean to replace Lawrence Speck, FAIA, who announced his departure in late 1999 pending the securing of a successor. In April that search reportedly had been narrowed to a short list of candidates, with officials still planning to have a permanent replacement on staff by the start of classes in the fall. Speck held the dean's job since 1992 and plans to return to teaching.

STEPHEN SHARPE

UT Austin Conference Explores Technology

LASTING: A technology conference in July at the University of Texas at Austin will emphasize the skins of buildings—that critical zone that often defines the fundamental character of the architecture. Scheduled July 13-16, "Skins: Where Design and Technology Meet" is sponsored by the Association of Collegiate Schools of Architecture (ACSA) with support from the Society of Building Science Educators (SBSE).

The keynote speaker will be Billie Tsien, principal of Tod Williams and Billie Tsien Architects in New York. In all, more than 20 speakers are slated to lecture on topics ranging from new thermal performance technology to life-cycle costs of building envelopes. Organizers of the conference expect attendees from a broad range of disciplines, including historians, theorists, engineers, and designers.

Complex and often taken for granted, building skins are designed to respond to a host of technical, functional, constructional, and visual criteria. The conference will extend the range of discussion beyond those criteria to explore technology's impact on cultural, operational, and aesthetic issues. Ses-

sions during the four-day event will be split among three topics—Performance and Logic, Aesthetic Desire and Material Fact, and Configuration and Cultures of Production—with additional sessions to be scheduled for presentations outside those themes.

For more information, visit www.acsa-arch.org or call the UT Austin School of Architecture at (512) 471-1922.

Two years after failing to win over University of Texas regents with a preliminary design for the Jack S. Stanton Museum of Art in Austin, Swiss architects **Jacques Herzog and Pierre de Meuron** have been honored with the Pritzker Prize, architecture's most prestigious honor.

The AIA College of Fellows elected only one Texas to their ranks this year. **Donald Williams, FAIA**, principal and co-owner of DwyerWilliams in Houston, is among 72 newly inducted Fellows.

Spanish engineer and architect **Santiago Calatrava**, whose works recently inaugurated the new Meadows Museum at Southern Methodist University, is designing a dynamic water fountain for the Dallas museum. "Blow" will feature rocking steel arms that will transfer water from one end of a large pool to the other in a continuous movement.

Celebrity architect **Frank Gehry** has yet to design a natural history museum, but in June will begin developing ideas for the Dallas Museum of Natural History. The \$100 million new museum will be built in the downtown Arts District.

Sustainable Design is the latest publication by the National Council of Architectural Registration Boards (NCARB) in its professional development series. Written by architect Jones Kulman and real estate developer Joel Schucko, the book may be ordered through www.ncarb.org/publications.

Colorful.

Big city architect. Lover of nature. Massimo Fuoci is a study in contrasts. Taking inspiration from walks in the Italian countryside, Massimo transformed a typical corporate office outside Milan into a sophisticated, yet playful environment. He mixed the bold colors and easy workability of DuPont Corian® solid surfaces with other materials to create sweeping curves, wide open spaces and an overall sense of vitality. Massimo says his goal is to interrupt monotony. It appears he's on the right path. To find out more about the Colors of Corian®, contact your local Authorized Distributor of Corian® at (800) 392-5131 ext. 400.

CORIAN®
SOLID SURFACES



Circle 62 on the reader service card

NOW TWO CONVENIENTLY
LOCATED STORES . . .

MILLER
BLUEPRINT COMPANY NORTH
10713 METRIC BLVD
Austin, Texas
(512) 837-8888



MILLER
BLUEPRINT CO. DOWNTOWN
501 WEST 6TH ST.
Austin, Texas
(512) 478-8793

... TO SERVE BETTER THE
AUSTIN PROFESSIONAL!

Circle 13 on the reader inquiry card

www.blacksonbrick.com



Arriscraft Stone's Unique Benefits:

- 8 standard colors
- No sealing required
- 4 textures
- Guaranteed for life of building
- Installs like brick
- Custom colors available



Blackson Brick Co.

black_brick@hotmail.net 214-855-5051 www.blacksonbrick.com

Circle 6 on the reader service card

Teifs ONE-COAT Stucco®

- **Quality** – All applicators are approved by Teifs.
- **Value** – Faster application time saves you money.
- **Strength** – tensile and flexural strengths comparable to three-coat stucco.
- **Durability** – life expectancy equal to three coat stucco

Quality is the Solution!



228 Buckhorn, San Antonio, Texas 78204
Tel: (214) 473-2353 Fax: (214) 473-2346
1-800-458-4780 E-mail: info@teifs.com

Circle 101 on the reader service card



SuperScreen Motorized Shades, Recess Mounted, The Getty Center, Los Angeles, CA

NYSAN Motorized and Manual Shading Systems

Detailed Product Information at www.nysan.com

Distributed in the
Southwest by

TEXTON
COMMERCIAL

- Technical Support
- Commercial & Residential
- Turn Key Installation Service



For information Contact:
Ed Williams, Dir. Comm. Sales
114 S. Kirby, Garland, TX 75042
edwilliams@texton.com

Free 800 442 1540

Circle 2 on the reader service card

New Owners Renovate Trost's El Paisano

MARFA El Paisano Hotel is undergoing renovation by new owners who plan to return the late 1920's Spanish baroque landmark to its original grandeur. Designed by Henry Trost of El Paso and built by the Gateway Hotel Company, El Paisano is listed in the National Register of Historic Places and as a Texas Historical Landmark.

El Paisano, designed by Trost in 1927 and opened in 1930, quickly became social headquarters for wealthy ranchers in and around Marfa until the Great Depression stifled the town's prosperity. Trost also designed the Gage Hotel in Marathon and an addition to the Holland Hotel in Alpine, and both played similar roles as centers for their towns' activities. Framed photographs in the lobby of El Paisano still recall its main claim to fame—temporary home in the mid-1950s for Hollywood luminaries Elizabeth Taylor, Rock Hudson, and James Dean when "Giant" was filmed nearby.

Joe and Lanna Duncan, owners of the historic Hotel Limpia in Fort Davis, bought El Paisano in March at auction after local officials foreclosed on the property, most recently remodeled as time-share condominiums, for back taxes. Joe Duncan said he will operate El Paisano as a hotel, and plans to reopen its restaurant and bar which for many years have been closed.

Henry Trost's El Paisano Hotel in downtown Marfa; photo courtesy Joe Duncan



Dallas Architecture Forum Presents Cunningham

The Dallas Architecture Forum ends this season's programs with a tour of the new house that local architect Gary Cunningham has built for his family. A work in progress, the house is both the location (4404 Greenbriar) and the subject of the talk. The Cunningham firm has received numerous design awards for such projects as the "Power House," the Addison Conference Center, and the Coleccion Academy Chapel. Call 214/740-0644. **MAY 5**

China's Foundation Symposium on Flavin

The China's Foundation in Marfa hosts a symposium titled "Light in Architecture and Art: The Work of Dan Flavin." Speakers include Tiffany Bell, project director of Dan Flavin Catalogue Raisonné; Kurt W. Forster, director of the Canadian Center for Architecture; Michael Gowan, director of the Dia Center for the Arts; and Roberta Smith, art critic for *The New York Times*. The event will be moderated by Brydon Smith, former curator of twentieth-century art at the National Gallery of Canada. Visit www.chinaf.org for more information. **MAY 5-6**

Design of Our Time at MFAH

This new exhibition at The Museum of Fine Arts in Houston, surveys significant works of the past decade to highlight the influences defining contemporary design. Drawn mostly from MFAH's permanent collection of objects and furniture, designers such as Frank Gehry, Ron Arad, Philippe Starck, Droog Design, and Gaetano Piretti will be represented. Visit www.mfah.org or call 713/639-7540 for more information. **THROUGH MAY 13**

Final Month for Henry Moore Works at DMA

Henry Moore, *Sculpting the 20th Century*, a traveling retrospective featuring more than 200 pieces, ends its run at the Dallas Museum of Art in late May. The exhibit – including works on paper, plasters, maquettes, carvings, and finished bronze sculpture – follows Moore's career from his youthful abstract leanings to his later embrace of more mainstream artistic expression, and examines his interaction with the architects of his day. **THROUGH MAY 27**

TFAA Focuses on San Antonio and Austin Artists

The Texas Fine Arts Association in downtown Austin presents the third in a series of exhibitions featuring emerging artists based in a particular region in Texas. Having presented Houston/Galveston and Dallas/Fort Worth, TFAA now presents *Artistic Centers in Texas: South Texas*. For information, visit www.tfaa.org or call 512/453-5312. **JUNE 9 THROUGH JULY 29**

CRS Veterans Recall Glory Days

COLLEGE STATION For Texas architects the initials "CRS" represent a phenomenon as much as an architectural firm. The legends that surround Bill Caudill and John Rowlett, professors in the architecture school in the A&M College of Texas in the immediate Post WWII era, are a legion. The firm began over a grocery store on the south side of the campus, and grew to an international giant. Its early work in College Station remains in houses on South Knoll, and in one remaining building that was the College Station High School. Its later works spread the globe, and the individuals who made them are equally dispersed. The signature names, Caudill, Rowlett and Wallie Scott, have gone to a greater glory, as has the younger lead designer Paul Kenyon. The senior members of the firm are now retired, and CRSS-Architects was bought by HOK in 1994.

That the name CRS lives on is a result of the magic of the ideas that were generated by this remarkable group of people, and of the generosity of spirit that endowed the CRS Center in the College of Architecture and the John Miles Rowlett Lecture Series. CRS Center Director and the Blue Ribbon panel that created the events of the day deserved the heartfelt rounds of applause that echoed throughout the day.

Rowlett 2001 was billed as an examination of the CRS Legacy, and as a reunion of the hundreds of young architects who began their careers, and in some cases completed their careers, in the firm. CRS had a reputation for building people as well as buildings, and was, as the late Jonathan King wrote, "only half-jokingly referred to as the largest graduate school of architecture in the country."

February 16 was a reunion in every sense of the word. Tom Bullock, Willie Peña, Herb Pasour, Frank Lauer, Charles "Tiny" Lawrence, and Jim Gathan, giants who had been with the firm since its Bryan/College Station days, were joined by a host of architects from across the nation to celebrate the unique contributions that CRS made to architectural practice, many of which are now taken for granted.

The basic belief that good architecture grew out of a serious examination of the needs of the client and the users, and that it was the architect's responsibility to undertake basic research, is now accepted in the mantra of "knowledge-based design." For Caudill this work began with experimental research at A&M, and studies with landscape architect Robert White, and daylight experiments with Ben Evans and others. His concept of the "open classroom" was before its time, but educational design remained a mainstay of the firm for its entire life.

Innovation was the hallmark of CRS practice, as illustrated by the firm's use of "squatters,"

where a troika of designers, managers and technologists spent intense days with the client group to establish the schematic design on site. "Squatters" grew out of the necessity of reducing travel time in the days before interstates and flying were commonplace.

"Programming" began with the notion that before becoming problem solvers, the design team had to seek out the true nature of the problem. Peña, and many of his now famous protégés, discussed the history and development of "Problem Seeking," still the bible of the programmer.

The pressure to create buildings and whole towns "on time, and in budget" across the globe spawned new approaches to project delivery. "Fast Track" design, where the foundations and frame was going up as the superstructure was still being refined and specified. Construction Management, now a whole profession, had its start in CRS/CM, and Chuck Thomsen was at A&M to tell the story.

The CRS organization of the project team, indeed the whole notion of "Design by Team," has become standard operating procedure. Leading executives from nationally known firms, including Ron Skaggs, the 2000 President of AIA and himself a former CRSer, described the sense of cross-disciplinary respect and interdependence that was the essence of CRS. The respect extended to all members of the team, and in the words of Jonathan King, "mentorship was not an option, it was a responsibility . . . and the best way of passing down the corporate culture."

Perhaps the most emotional and revealing panel concluded the afternoon-long event. Tom Bullock asked some of the most senior members of CRS to "Rationalize Mistakes." Willie Peña's identification of the act of "going public" and the acquisition of firms with differing cultures, as two of the most serious "mistakes," provoked a stirring discussion that was frank and open. Herb Pasour suggested that Bill Caudill had always lived with risk and change, and noted that CRS was threatened with acquisition itself, and that becoming a public company was the only way to preserve the culture of the firm. The issue of growth causing the firm to "lose focus" and "erode the concentration on design," was countered by Tom Bullock's reminder that diversification was a pattern in the firm from its earliest days. Bruce Wilkinson suggested that "leadership was more important than the form of ownership." The exchanges gave us all a taste of the genius that was CRS and the willingness to debate and discuss in an atmosphere of trust and respect.

In 1973 Bill Caudill wrote in one of his famous "This I Believe" (TIB) memos to the firm, "To fully understand CRS, one must know and understand

the values we place on people and things. Given enough time, the inequities, overstresses, underemphasis and failures to recognize talent will be rectified because of CRS's deep-seated values. Values are the slow-moving, powerful forces which shape CRS. Values support the entire CRS structure. The uniqueness of CRS lies in its values."

The audience of students, faculty, professionals and CRSer of many generations continued their reminiscences on those values, and on the remarkable life of CRS, and the reasons for its strengths, weaknesses, and ultimate acquisition by HOK. They agreed that the innovations and products of CRS will live on. They also agreed, with an emotion that was palpable throughout the George Bush Conference Center, that Bill and John and Wallie and Paul would have enjoyed Rowlett 2001 as much as anybody. For those of us that knew them, even a little, we sensed that they did.

DAVID WOODCOCK

Of Note: TxDOT Letters of Interest

4/13/14 Texas Department of Transportation officials will post requests for letters of interest (LOI) in late May or early June from firms seeking two-year contracts for work on capital program and rest area projects throughout the state.

Firms must be pre-certified prior to the LOI submittal deadline date. Notices regarding the submittal of LOI will be on the TxDOT Web site (www.dot.state.tx.us) under "Business," the Texas Marketplace bulletin board and the state's major newspapers. Bill von Rosenberg of TxDOT's Capital Improvement Programs said architects should not wait for the notice posting before completing the pre-certification process.

For more information, visit the Web site or call von Rosenberg at (512) 416-2382 or Paula McKinley, the program's pre-certification manager at (512) 416-2218.

ALL SEASONS COMMERCIAL DIVISION INC.

For more than two decades, the ALL SEASONS name has been synonymous with high quality. As a Texas owned company, ALL SEASONS is a manufacturer of high quality yet competitively priced window and door systems for both the residential and commercial marketplace. Our local and private ownership offers a dedication and solid commitment to customer satisfaction.

Please contact us concerning your window & door requirements. Whether your needs are for residential products, commercial, heavy-commercial or architectural grade window systems, ALL SEASONS stands ready to provide you with products which you may specify with pride. Our product line offers intrinsic beauty while providing the optimum performance in durably manufactured windows.

Please contact the Bryan, Texas facility concerning:

- AAMA 101 "C" rated systems (commercial)
- AAMA 101 "HC" rated systems (heavy commercial)
- AAMA 101 "AW" rated systems (architectural window)

ALL SEASONS COMMERCIAL DIVISION INC.

1 800 444 1444

979 823 1005 fax

1293 Harvey Mitchell Parkway, Bryan, Texas 77803

Call the Longview facility for:

- Light commercial windows
- Light and heavy commercial windows with optional, built-in towers for the hotel/motel industry
- Steel entry doors, storm windows, and storm doors

ALL SEASONS SASH & DOOR MFG., INC.

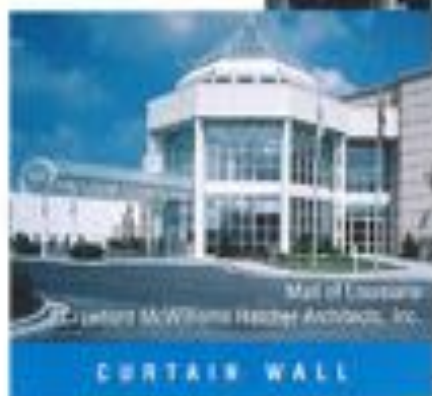
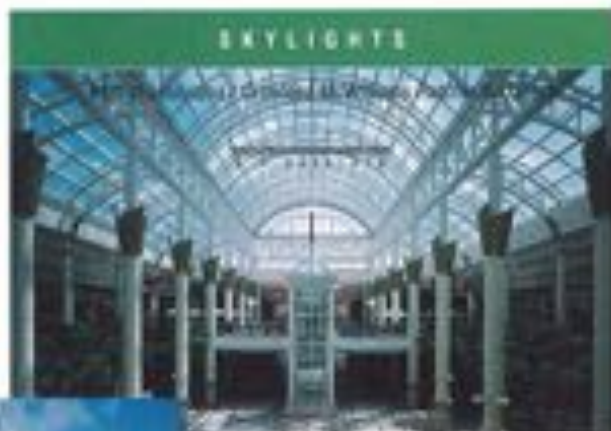
1 800 752 SASH

400 Ambassador Row in Longview, Texas



ALL SEASONS - YOUR SINGLE SOURCE SUPPLIER FOR
RESIDENTIAL, LIGHT COMMERCIAL, & HEAVY COMMERCIAL WINDOWS

WE'VE GOT A LOT IN STORE



At The Vistawall Group, we've helped create major malls throughout the country. Talk about store credit.

From our curtainwall and skylights to our custom windows and doors, our products enhance some of the nation's finest meccas of merchandise.

We're your single source supplier; designing, engineering and manufacturing custom products for everything from major shopping and retail centers to the corner convenience market.

The Vistawall Group. We've got a lot in store.

THE
VISTAWALL
GROUP

800-869-4567

fax: (972) 551-6264

<http://www.vistawall.com>

The VISTAWALL GROUP
BUILDING MANUFACTURING COMPANY

VISTAWALL
ARCHITECTURAL PRODUCTS

MODULINE
WINDOW SYSTEMS

NATURALITE
SKYLIGHT SYSTEMS

SKYWALL
TRANSLUCENT SYSTEMS

Circle 19 on the reader service card

by BARBARA ROTBLUT

Historians Rescue 150-Year-Old Kiln

Denton County's Wilson Pottery, abandoned over a century ago, set for exhibit as cultural relic



Excavation of the original site of Wilson Pottery took place in 1998. A new structure will house the reconstructed kiln, photo courtesy James R. Kirkpatrick.

AS DEVELOPMENT SWEEPS ACROSS DENTON County, preservationists have rescued one vestige of local history—a rare kiln dating back to the 1840s. The office of James R. Kirkpatrick Architect in Denton recently completed a study for an exhibition building to house the reconstruction and restoration of the historic Wilson Pottery kiln. The firm is collaborating with the Denton County Historical Commission and the Denton County Archaeological Society on the project. The kiln, abandoned over a century ago, was threatened by ongoing development before it was disassembled and removed from a site in the town of Corinth in south central Denton County. One of the first non-agricultural industries in the area, the Wilson Pottery site was listed on the National Register of Historic Places.

Berry Vermilion, chairman of the Archaeology Committee of the Denton County Historical Commission, undertook the rescue operation to document and salvage the historic kiln. The kiln had to be disassembled and moved to preserve it from destruction. Fortunately, for the future of this proposed educational exhibit, Lake Sharon Limited Partners, Inc., and Zena Development Corporation of Southlake, Texas, permitted the salvage operation to take place. Vermilion contends, "The kiln is unlike any other nineteenth-century pottery kiln in not only Denton County, but in North America." Its uniqueness results from its combination of two traditional kiln types, the beehive and the groundhog kilns. The groundhog is an underground, tunnel-like kiln, while the beehive is a circular kiln built above ground. Vermilion describes Wilson's kiln as a modified groundhog-beehive kiln, because it is circular, but partially buried in the ground. For unknown reasons, the kiln was double-sided and had a double fireplace. The kiln originally was used to produce salt and slip-glazed pottery until operations ceased around 1865.

Kirkpatrick observed that two goals for the project design were to emphasize the original location and atmosphere of the kiln, and to ensure that the building would not be intrusive in its new surroundings, particularly if the new site is a historic park. Kirkpatrick took his cue for the form of the kiln exhibition building from the appearance of the kiln in its original location, partially buried in the ground and overgrown with vegetation. Kirkpatrick's proposal for an elliptical domed structure constructed of thin shell concrete is similarly conceived as a partially sunken, earth-sheltered design. To evoke the origi-

nal appearance of the kiln, its surface will be covered with earth and planted with native plants. The interior of the facility will contain the reconstructed kiln positioned next to an amphitheater to seat visitors during program presentations. A walkway around the perimeter of the room will be elevated to permit views from above the kiln. A projecting side window, mimicking the positioning of the kiln firebox, will reinforce the feeling of an underground space. The building will also house artifacts retrieved from the site during salvage operations.

Part of Kirkpatrick Architects' charge was to plan the developmental phases of the Wilson Pottery Kiln Reconstruction project. In the project's first phase, a site for the reconstructed kiln will be determined, the criteria as stated by the proposal is that the new site "must be respectful and cognizant of the original location." So far, four sites have been proposed. According to Kirkpatrick, the two most likely sites are the Historic Park of Denton County, located near Denton's historic downtown square, and the Cross Timbers Park, located in the southeast corner of the city. While the Cross Timbers Park site is close to an elementary school—convenient educational programming—the Historic Park site has the advantage of already containing a relocated 100-year-old Victorian home—the Bayless/Selby House. This house, currently being restored by Kirkpatrick Architects, is proposed as the support staff facility. If another site is chosen, the study proposes either to move an historic structure to the site and restore it, or to build a vernacular style building indigenous to Denton County as the support space. The construction or relocation of a support facility would occur during phase two of the project, and the kiln display facility would be constructed during phase three. During phase four, site improvements will be completed, with support staff hired during a fifth, and final, phase. Preliminary cost for the entire project, excluding possible site acquisition, is estimated at \$1.4 million. Ultimately, the Denton County Historical Commission will select the site for the facility and will raise funds for the project.

Of Kirkpatrick's design, Vermilion states, "he achieved the look we wanted—it's amazing for them not having seen the original site." As development rapidly escalates south of Denton and north of Fort Worth in the Alliance Airport corridor, the last remaining vestiges of Native American villages and indigenous structures may disappear without a trace. The rescue operation that saved the historic pottery kiln may serve to draw Denton County residents' attention to the loss of their history, and provide a precedent for saving what's left for posterity.

Teahouse Reinterpreted

UT Arlington class updates design of traditional Japanese structure using lightweight industrial materials

Set in a courtyard outside the School of Architecture, the freestanding teahouse is on display through the summer; photo by Craig Kubies.

CHANYU, THE TRADITIONAL JAPANESE TEA ceremony, celebrates and renews the unique and fleeting qualities of each human encounter. The ceremony is governed by an extremely disciplined study of respect, utility, and grace. Therein lies its relation to architecture: being rooted in human interaction, it is disposed to purity in its use of materials and aspires toward beauty in precision. A sober study, but one illuminated by a silent joy and color. How fitting, therefore, for the tea ceremony, and the structure in which it occurs, to serve as a means of better understanding the discipline of architecture.

A teahouse, quite literally, embraces the ceremony sheltered within. Reciprocally, it is appropriate that the structure should reflect the precision and nature of the ceremony. This is in fact the tradition of teahouses in Japan, and the kernel of the study documented here. Our fourth-year design studio at the University of Texas at Arlington began the semester with a brief study of lightweight industrial materials, and moved into more detailed resolutions of materials, connectors, and symbolism appropriate to

a teahouse. In our interpretation of the form we also attempted to celebrate the beauty of the ceremony by placing it behind a transparent curtain, thus perching it on a previously unseen stage. This veil, in addition, filters the landscape for the participants in an arguably Japanese way, but unknown to the traditional form.

The project documented here grew out of a desire to introduce my students to the harmony and tranquility embodied in Japanese architecture and the culture at large. As constructed by the studio within a period of eight weeks, the teahouse served as an intimate - albeit accelerated - study of connection, materials, and minimalist space.

We have also filtered our interpretation through the use of industrial materials. This, of course, is a nod to current practices in contemporary Japanese architecture, but more importantly, recognizes a subtler observation related to the tea ceremony. These materials, at first blush seemingly incongruous with the notion of a teahouse, have intensely beautiful properties of precision and are of obvious

complement to the ceremony. But the technology involved in their manufacture has also sharpened an enduring edge. This may impart a severity more crisp than traditional materials, serving as a foil for the transience and delicacy of the human condition Chanyu celebrates.

Scope and Materials

Given the constraints of a 15-week summer semester, and with 13 students, we could not have undertaken a teahouse complete with grounds and landscape. For this reason we decided to concentrate on a simplified form of the structure. We also narrowed the scope of the project, particularly in consideration of affordability, workability, and availability of

"Teahouse Reinterpreted"
continued on page 24



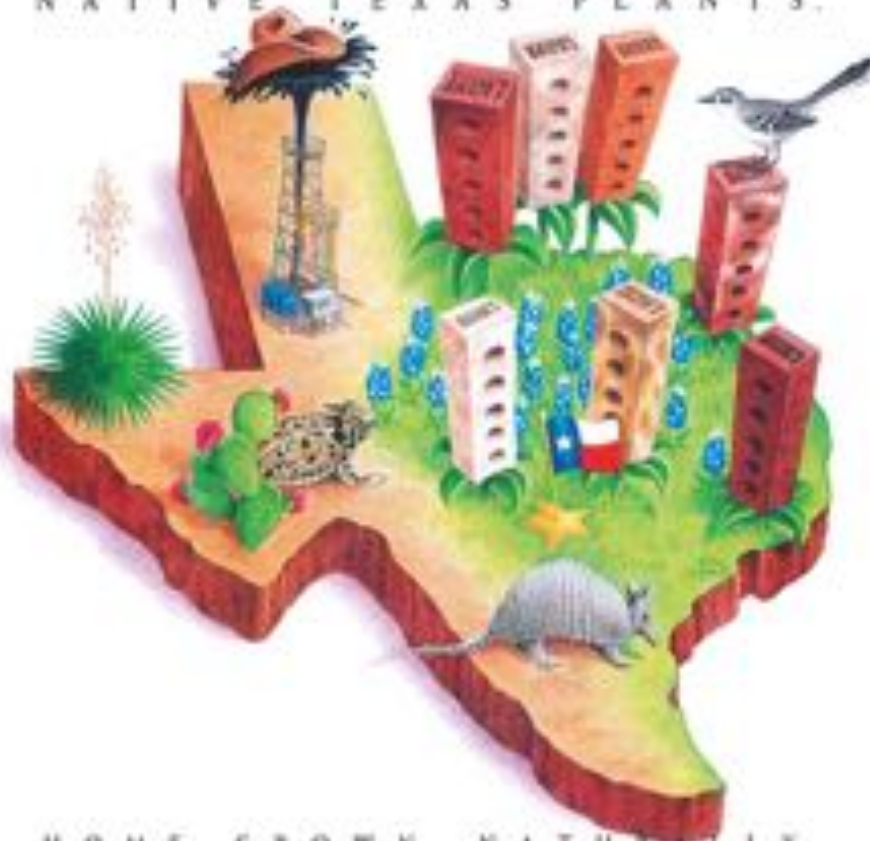
BE OUR GUEST

Interested in attending the Construction Specifications Institute (CSI)
Annual Convention and Exhibit, June 21-24 in Dallas, Texas?

Texas Architect has VIP Guest Passes.
Please contact Carolyn Baker at (512) 249-7012
or cbaker@texasarchitect.org to receive a complimentary pass.

\$105 Value. Not valid for employees of an exhibiting company at CSI 2000.

NATIVE TEXAS PLANTS.



HOME GROWN, NATURALLY.

Acme Brick. Texas-based and Texas-proud.

The ideal building material for your next project is made right here in the Lone Star State from native soil. With seven plants and business sales offices across the state, Acme Brick spends \$70 million in Texas each year. These dollars help bolster the local economy, which means more potential business for Texas architects. Insist on the same quality that architects have relied on since 1891.

Together, we keep Texans working and the Texas economy growing.



Check your phone directory to contact your local Acme Brick Company sales office.

Circle 16 on the reader service card



Fabricators of
Structural, Industrial,
and Miscellaneous Steel



Celebrating 14 Years
of Excellence

2315 Dan's Court
San Antonio, TX 78223
Phone: (210) 532-6852
Fax: (210) 532-8181
Circle 52 on the reader service card



Full-Structural
Engineering Services

Forensic Investigations

Historical Additions
& Renovations

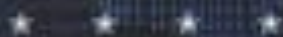
140 Heimer Rd. • Suite 360
San Antonio, Texas 78232
210.979.7900
Fax: 210.979.7800
Circle 76 on the reader service card



CSI 2001

21-24 June, 2001

Dallas, TX



Dallas Convention Center



Linking People, Technology And Information

- Visit more than the 650 exhibitors represented at 1,100 booths
- Discover more than 250 new products & technologies
- Earn CEUs and LU Hours while you learn about important industry issues at 57 Education Sessions
- Network with your peers



The Construction
Specifications
Institute

Register at
www.theconshow.com
Or call 800.689.2900



Modern, hard-edged materials contrast with the artistic delicacy of the Japanese tea ceremony; photo by Craig Kuban.

"Sublime Reinterpretation"
continued from page 21

materials, as well as the logistical transport of materials and assemblies from the studio to the selected site. This final constraint informed almost all aspects of the project. Indeed, the production phase of the project would have been much simpler had we had the luxury of constructing the teahouse only once, and upon a foundation in a fixed location. Yet, because the structure was designed to be temporary, very few permanent connections were possible. But this mutability, and the attendant thought required for appropriate detail, only served to underscore those aspects of the ceremony we wished to reflect.

Lightweight industrial materials were available from a number of local sources, including several Texas-based suppliers for the oil industry. This made for some interesting finds, such as an impervious flooring avail-

able in "safety yellow." Ironically, materials used on oil rigs performed suitably for our teahouse, many of the requirements for petroleum exploration being almost identical to those governing our project. The precision and purity of those products lend a subtle beauty which is often overlooked and generally unappreciated. But this subtlety parallels the discipline of the ceremony that served as inspiration.

The primary material selected for the project was aluminum. Where deviation from this material was necessary for reasons of strength, workability, or utility, we have, as homage to the celebrated demarcations in Chanoyu, emphasized the change in material with a very deliberate contrast, noticeably in red for steel, yellow for fiberglass, and in an overall translucence which blends structure with sky.

In our desire create a serene environment we were helped immeasurably by Soyo Nabeta Sensei, who contributed the Way of Tea for the structure's inauguration. Her presence and her art illuminated the teahouse and reminded us that such human activity moves art from the realm of theory into the realm of life.

The teahouse is located in the courtyard adjacent to the University of Texas at Arlington's School of Architecture, and will be on display through the summer.

Congratulations to all who worked in creating the memorable Texas Department of Transportation Tourist Center in Laredo.

Brick & Tile Center

Rustic and Hand Crafted

- Decorative Mexican tile
- Natural Stone Tile & Flagstone
- Clay Roof Tile
- Custom Designs & Sizes
- Glazed & Unglazed Ceramics



Management and staff average 20.4 years of experience in the tile and natural stone business.

Mantra: Rustic does not have to mean a compromise in technical quality.

Uncommon projects are a welcome challenge.

Visit our showroom
12024 N. Lamar
Austin, TX 78753
Ph: 512-834-8525
Fax: 512-834-8553

texasilecenter.com

Circle 27 on the reader service card

The IBP Floor System. Clearly A Dramatic Choice For Floors.



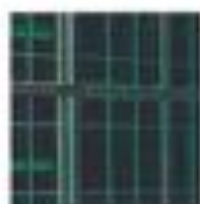
** Lutz/Kingdon, Inc. Architects Wichita, Kansas*

The IBP floor system creates a dramatic walkway at the Provo Towne Center Mall.* This lightweight system weighs 17 lbs. per square foot compared to 40 to 60 lbs. per square foot for concrete glass paver systems. The total glass area of 87%, compared to 62% for most concrete glass paver systems, transmits more natural light to your structures' interiors.



You also have the convenience of installing the IBP Floor System at any stage of the construction process once support structures are in place. And, installation is much faster than competing systems. With all of the IBP floor system's advantages, it can often be more cost effective than concrete glass paver systems in installations of 50 square feet or larger. Please contact your Acme representative for information on free design assistance for IBP floors.





BY W. MARK SUNDENSON

M A T E R I A L C O N C E R N S



“Brick is the ground you tread upon turned by fire into something to use to build.”

Frank Lloyd Wright

IN THE INTRODUCTION TO HIS 1995 BOOK, *Studies in Tectonic Culture*, architecture critic Kenneth Frampton establishes a fundamental distinction between two modes of building—one derived from earthwork and masonry, both which utilize compressive mass, and another that evolved from timber tensile frames which he traces to textiles, basketry, and woven surfaces. The first mode arose conceptually and chronologically from stonework and the hearth to brickwork and on to reinforced concrete. The second mode is represented by archaic Japanese wooden structures and by such infill as wattle and daub walls. By way of explaining the distinction, Frampton refers to Gottfried Semper's *Four Elements of Architecture* (1851) and Semper's distinction between the “stereotomic,” or load-bearing masonry construction techniques, and the “tectonic,” or wood and carpentry-based joining of spatial enclosures with sheathing.

The etymology of language related to construction in large part has roots in weaving, and while Frampton shows the relationship between brick coursing and weaving, tying both back conceptually to strictly textile roots, one could argue that the op-

position proposed is actually one of the history of construction being developed from both textiles and ceramics. One might argue that brickwork and its laid rows is more closely related to the rudimentary coiling techniques employed in the construction of ceramic pots throughout history. And if the ceramic metaphor were carried a bit further, glass, a transparent ceramic with its silicate base, would be the next logical step in the progression from stone to brick to concrete. Glass's translucency and raw its structural qualities move it into a realm not possible for its opaque lineage.

One could posit from this that we have evolved to a present system of largely trabeated frames clad with layered skins, ideally removable for replacement and, more importantly resisting flexure and dynamics of movement by the integral and multiple jointure of such cladding. Some structures rest with a few large joints and others by tessellated surface materials which operate in principal, to give an exaggerated example, very much like the heat-shield tiles of the NASA space shuttles which respond in small increments to extremes changes in temperature. Concrete shear cores and steel framing, as well,

can be thought of as a contemporary hybrid of these two basic ceramic/textile tendencies.

Aside from fundamental tectonic arrangements and more subtle structural implications, other aspects of materials are obviously important to architecture. Information informs form. Technology is the vocabulary of processes available to a given culture, and as tools develop so do techniques and vice-versa. Technology is colored by the materials available and the knowledge available in a particular place at a given time. Evolving means of communication and transportation extended the palette of possible materials. Until a few decades ago the earth as a source of literal material seemed limitless.

Materials and their resultant form accrue and carry meaning over time and across civilizations. The ancient Incas termed gold to be “sweat of the sun” and silver to be “tears of the moon.” These characterizations were real to them and their cosmology could not be divorced from their literal existence. Donald Judd's disavowment of any and all such qualities intrinsic to a material became a kind of benchmark for art in the 1970s: “What you see is what you see.” Judd's position attempted to divorce art

from the symbol-laden and metaphorical qualities of what Judd termed the "European art" tradition. His "specific objects" are intended to carry nothing other than themselves into a rapport with the observer.

An intention, or idea, and the material employed in its realization are ideally inseparable. Clear examples of this reciprocity are Italo Calvino's "arch and stones" dialogue in *Invisible Cities* or perhaps a reputed conversation between Picasso and Braque as to what caused the invention of nails—the idea of a nail or the availability of iron. Materials in this sense need not be real or even tangible. It is not uncommon for architects to refer to light, or time, or memory as their primary working material. Louis Kahn believed that all material was "spent light." A more prosaic, and ironic, rendering of the place of materials in human work is painter Philip Guston's quote that painting is the use of "colored dirt."

Alchemists sought the *prima materia*, the sub-

stance which underlay all other materials, and concerned themselves with the attempt to transform one material into another. Their research delved into material families and other forms of mystical relationships for centuries before science established its categories. Aristotle believed that this *prima materia*, brought together in various proportions with the four "qualities" — dryness, coldness, moisture, and heat — created the elements of which the world is constituted.

Manufacturers devoid of a larger view and arguing "consumer demand" continue to introduce products into the marketplace in which one material is made to "look like" another. These counterfeit materials such as plastic laminate made to look like granite or wood or whatever rob architecture of its intrinsic meaning and contribute to the breakdown of its set of values. Faux finishes and trompe l'oeil work behave as a kind of ironic "weaver," and their

proliferation — due to not wanting to invest in the genuine material itself — says something quite negative about the state of things.

And lastly, most materials require care. Aging and patina seem to be anathema to American culture but have been intrinsic and valuable to others. Warranties and legal issues relating to buildings as "products" lean precariously toward weathering being considered as some form of failure. In America today the term "low maintenance" is a euphemism for not wanting to care for something. In other cultures, care of the built environment is an ongoing endeavor, a rich and reinforcing investment and re-investment. This ahistorical sense of man and environment becomes increasingly important as distance is no longer a physical barrier, and as available resources and virgin materials diminish. ■

The author is principal of R. Stark Gendreau Architect in Fort Worth.



Mason's Bend Community Center; photo by Timothy Flansky

RECYCLED WORKS

BY JOYCE SELINA MUMBERGER

Hay, cardboard, tires, car windows, license plates, and road signs aren't typical building materials. But Samuel Mockbee's Rural Studio at the Auburn University School of Architecture is not a typical design studio. Mockbee set up the program in Greensboro, Alabama to give students hands-on construction experience while also benefiting the area's low-income families and their communities.

One of the more famous Rural Studio projects is the Yancy Chapel which makes use of scores of discarded tires in retaining walls. The Hay Bale House is also well known for its hay-filled stucco walls. The Sanders House, now being designed and built, is a first for the Rural Studio because its eight-foot-high, one-and-a-half-foot-thick rammed-earth walls are planned to support a roof that rises almost 18 feet above the ground.

Then there's the Mason's Bend Community Center with its glass wall made of overlapping side windows taken from 1989 and 1990 General Motor cars. The view of the building from the outside is pretty nice, but the experience from the inside is spectacular.

Most recently the studio is exploring ways to build with materials discarded at the end of manufacturing processes, including half-ton bales of cardboard. (About 50 tons of non-biodegradable wax-covered cardboard is thrown into landfills each year.) Also, the Lucy House is now being built using one-ton bales of carpet remnants.

Joyce Selina Mumberger is a second-year architecture student at Auburn University.

FAVORITE MATERIALS

The materials they choose help explain these architects' signature styles

Using Local Stone

KYLEE LANE, FAIA & TED FLATO, FAIA

We are inspired by vernacular stone buildings, especially when stone's massive quality is combined with the lightness of steel. The two reinforce each other by being opposites—one smooth and thin, the other heavy and textural. They are a great team.

For the Bartis Residence in Colorado we used a variety of granite to create organic walls that simulate the rock cliffs of the site. Telluride granite and Empire granite both are found in large screens on the mountain face—a large jumble of boulders and jagged rock. LakeFlato's "Boulder" Bill Aylor chose sculptural boulders to place into the walls of the house, integrating their mass into the wall and anchoring the stone walls to the site. The tight joints are dry-stacked and represent the angular manner in which the stone breaks—very different from the sedimentary limestone we love to use in Texas.

Using local stone grounds the building to its place. The great variety of stone and how it is used tells a rich story of any region, its geology, and culture.



LakeFlato Architects; photo by Wexler + Hartaway

Inspired by Brick

FRANK D. WELCH, FAIA

Soon after meeting O'Neil Ford in 1956, I visited San Antonio and saw the many houses and buildings that Ford had done using a soft, buff-colored Mexican brick laid up with flush, sacked joints. It became an integral element in my "kit of parts" which I employed from the beginning. At the start of my practice, the first house I designed in West Texas, in Odessa, employed that soft brick along with other materials I found south of the border, guided there by Ford.

I used the Mexican brick for 10 or 15 years in West Texas and Dallas until its occasional tendency to "melt" or spall became controversial with clients. Before departing Dallas for the west, I discovered the pinkish, soft-looking St. Joe brick (cast in wood moulds and fired in old-fashioned kilns in Slidell, Louisiana). Except for its "iron spots," its appearance is close to Mexican brick, and when brick masonry is the thing to use these days, it is my choice. However, I still like the Mexican brick best.

Craft is involved in the tying of brick—I think it was Mies who said, "You can hold it in your hand." It is a most ancient, honorable building material, yet there is a multitude of buildings out there with its uninspired use. But think of ancient Rome and the pueblos and the Robie House and Rice University.



Frank Welch & Associates; photo by Charles Davis Smith

Wood in Domestic Building

WILLIAM F. O'CONNOR, FAIA

From my earliest interest in domestic architecture, I have had a particular preference for wood—not just as a framing material but especially as a material for cladding and structural expression and as a finish material for cabinets and furniture.

The South has a tradition of building with cypress. Unlike softer pines or fir, cypress has a tighter grain pattern, and as it matures achieves greater hardness which makes it more resistant to the effects of moisture. Our firm's O'Connor House, completed last year, is clad in cypress and we have another cypress-clad house in construction. Because of the density and hardness of the wood, we finish the cypress with semi-transparent stains, revealing the patterning of the wood grain.

We also favor natural wood veneers (particularly lighter woods such as birch, maple, and ash) for cabinets and custom furniture. Indeed, I am as excited with the possibilities of wood and the expression of its particular qualities in all forms—from rough and finished carpentry to custom millwork and furniture.



Starr & Buckel Architects; photo by Wexler + Hartaway

Stately and Sustainable

PROJECT Robert E. Johnson Legislative Office Building, Austin

CLIENT General Services Commission, State of Texas

ARCHITECT Page Southerland Page

CONTRACTOR SpawGlass Contractors

CREDITORS Jester-Quintanilla & Associates (structural), Berkebile Nelson International McGowen (sustainability), The Landscape Collaborative (landscape), OTM Engineering (communications), i02i (graphics)

PHOTOGRAPHER Paul Bardagy

HISTORICALLY, THE ESSENTIAL ARCHITECTURAL character of a building has often been derived predominantly from the materials used to construct it. Great structures over time, from the Pyramids to the Kimbell Art Museum, are architectural essays about materiality, where shape, scale, texture, color, and virtually all other architectural qualities are profoundly affected by the materials employed. Architects as diverse as H. H. Richardson and Mies van der Rohe have invented entire architectural genres rooted in the hearty robustness of stone (in Richardson's case) or the delicacy and elegance of the steel frame (in the case of Mies) wherein materials are the seminal architectural thread from which





all other design decisions emanate. In an era when facile digital imagery and monochromatic physical models dominate the design process, it is sometimes easy to lose sight of the power of real, tangible material character to shape architectural form.

Building costs and performance, no less than building imagery, are strongly affected by material selection and deployment. Energy consumption, durability, ease of maintenance, longevity, and virtually every other element of the life-cycle costs are impacted by the strength, finish, ease of assembly, and performance standards of the materials employed. Environmental costs, as well, are inextricably linked to material selection where raw material removal, resource depletion, recyclability, energy consumption of the manufacturing process, toxic/hazardous waste production, and embodied energy in transportation all became critical issues.

Design of the Robert E. Johnson Legislative Office Building in Austin began with materials as an overriding theme intended to generate both architectural character and high performance standards for a 320,000-square-foot building on a prominent site near the State Capitol. Inspired by the powerful

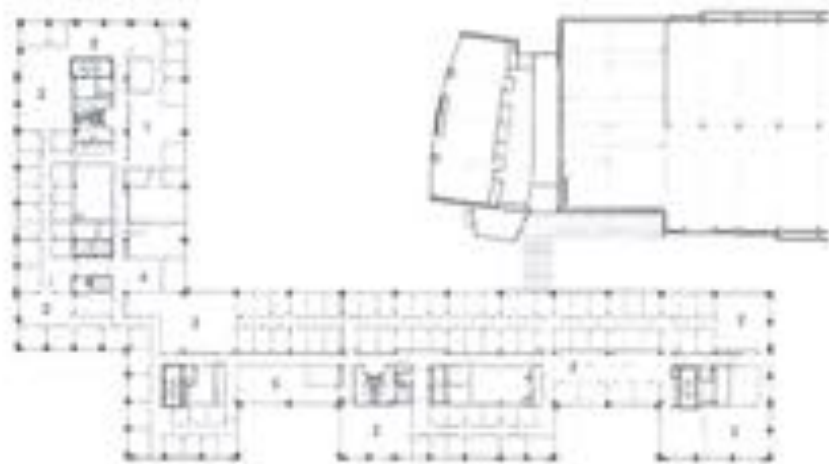
Chosen by state officials as a model for sustainable architecture, the REJ building opened in 2000 as the new home of the State Legislative Service agencies. Natural materials, including interior wood finishes and flooring, were researched for recyclability, non-toxicity, and overall environmental sensitivity.

materiality of its dominant neighbor down the street, the REJ building was conceived as an architecture based equally in technology and in an appropriate expression of purpose and place. The building's materials became the essential common denominator addressing a broad range of issues from contextuality to sustainability.

Design decisions at every level - from the frame, to the skin, to interior finishes - were shaped by a constant consciousness of how appropriate materials usage could guide and improve the design process. A robust concrete structural system composed of rectangular columns and flat slabs thickened at concentrations of structural loads was conceived, not only to be economical and long-lived, but also to give the building a feeling of heft and permanence appropriate for its public purpose. Concrete,



FLOOR 03



FLOOR 02



FLOOR 01

Strategic use of efficient glazing technology provided interior work spaces with maximum solar light yet minimized heat gain. The project team reviewed the state's guidelines for light quality, employee health, and energy efficiency before recommending updated standards which ultimately were incorporated into the building's design.

SpecNote: Sustainability

PSP devised a

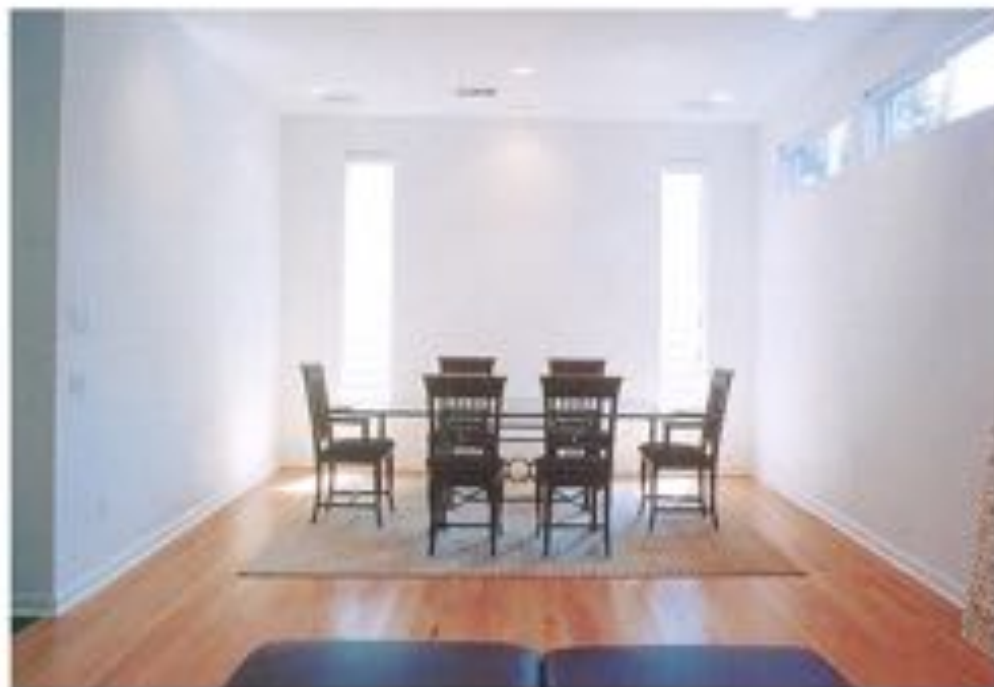
matrix to analyze the sustainability of chosen materials. Criteria included the origin of a material (where it was extracted and how it was transported to the site), the material's toxicity (during manufacture and after installation), its recycled content, and its future recyclability. Life-cycle cost analysis is also an important selection criteria because budget and pay-back periods are strictly set in government projects.

One of the more daunting tasks was specifying "green" materials to furnish interior workspaces. Laurie Smith, with Laurie Smith Design Associates, said "at the time the BEJ building was being planned, major suppliers of contract furniture and fabrics were not using recycled materials and had just recently begun attempts to make their manufacturing processes more environmentally friendly." Notable exceptions were a Danner (Eviro) chair and fabrics by DesignTex. The chair, placed throughout the building for guest seating, is 100-percent recyclable and uses CFC-free foam and low VOC finishes. The approximately 600 open-office workstations Smith's firm planned were covered with almost 12,000 yards of a fabric made from recycled polyester and plastic bottles. Tackboards were covered with another fabric (made from wool shorn from free-range sheep and raised grown without pesticides or synthetic fertilizers) resulting from manufacturing protocols (developed by sustainable architect William McDonough) that create zero pollutants.

As opposed to steel, exposed the structural system inside and reveal the strong, durable nature of the building even in office environments which are so often dominated by a feeling of transience and impermanence. Exposing the concrete frame also accomplished the sustainability goal of reducing redundant systems with their wasteful duplication of materials. Avoiding hung ceilings wherever possible resulted in a reduction of initial resource consumption as well as elimination of one of the elements of building assembly which deteriorates most rapidly. The concrete flat slabs also facilitated accomplishment of other sustainability goals by reducing structural depths at the building edges allowing greater daylighting opportunities.

Three in a Row

by GERALD HOORHEAD, FAIA



PROJECT Yapon Place Townhomes, Houston
CLIENT Para Design Group, LTD.
ARCHITECT Para Design Group, LTD.
CONTRACTOR Citama Builders, LTD.
CONSULTANTS Craftin Associates (structural engineer), Karen Rose Engineering & Surveying (civil engineer)
RESTORATION Hester + Hartaway

THE DEVELOPMENT MODEL FOR TOWNHOUSES in inner city Houston has become rote by now. Buy a corner lot, usually 50 by 100 feet, build three

attached townhouses, and sell each for well over \$300,000. Lacking zoning, Chapter 42 of the city code of ordinances imposes the few regulations there are: density and setbacks (the building code still applies). The three townhouses on Yapon Street in the Montrose neighborhood were designed more than a year ago while Chapter 42 was being revised and they are three dimensional diagrams of those updated regulations.

With some uncertainty at the time about the anticipated requirements, architect Camilla Para chose a safe course by making the units freestanding rather



Opposite page, top) In the second-floor family room, the open stair and inset balcony define the circulation zone which is expressed on the exterior with the concrete panels. Opposite page, bottom) The large space of the formal living/dining area has walls for art display and minimal windows on the south exposure. (This page, above) Contrasting materials and large windows help relieve the visual weight of the projecting upper floors. (This page, left) Finish materials, such as granite countertops and natural wood cabinets, are not typical for new urban town houses.



(Clockwise from top left) Blue stucco and gray cement panels complement the dark foliage of live oaks. The steel stair with wood treads and open risers slices through a light-filled volume. The family room opens to nature trees. Interior materials (wood floors and cabinets, white walls and ceilings) are elegantly restrained.

than connected by a fire wall. The 6-foot space between each unit allows all sides of each house to have windows, greatly improving the amount of light and the sense of openness over the typical townhouse arrangement (with windows only at the two-end walls). The garage doors are set back 17 feet from the street – a new Chapter 42 proviso – while the upper floor project to the 10-foot setback required of the house itself. The garage setback is intended to keep parked cars from blocking the sidewalk and reduces the impact of going garage doors on the streetscape. An unfortunate side effect to the new regulation is a two-story mass hovering over the sidewalk.

Pera's composition of the front facade, rendered in ochre stucco, gray cement-composition panels, and large windows, works to visually break up this hovering mass. Contrasts between planar and volumetric elements, rendered in contrasting materials, reduce the apparent size of the facades. The stucco volume is punctured by large-paned windows, revealing the thinness of the wall and the lightness of

the construction. Half of the volume is recessed to form balconies. A thin plane of cement-composition panels enclosing the balconies floats a breath away from the stucco, further decomposing the sense of mass. Then the bright stucco itself only wraps the corners as far back as the garage setback, further emphasizing the lightness of the mass and the thinness of the facade. The rest of the house is clad in cement-composition siding boards.

The townhouse design provides the usually expected amenities while also offering some unexpected pleasures. At 2,800-square-feet, each unit contains three bedrooms, three and one-half baths, a formal living/dining area, and a kitchen opening to a family room with a fireplace. Despite the commonness of this speculative market specification, the surprise inside is the spaciousness, starting with the open-riiser steel stair slicing through a generous hall filled with light. The living areas on the second floor flow into one another while maintaining a modest formality.

Simplicity of means in the limited material palette and clear, open interior spaces are quietly exploited by Parra in the Yupon Street Townhomes. As the inner city gets denser, this kind of restraint will be a welcome sign of urban neighborliness, in contrast to the loud fabulistas bellowing for attention in the competitive real estate market. **E**

Gravid Moorhead is an architect practicing in Houston.

Spec Note: Cement Panels

The dark gray panels on the townhouse facades are Cembonit Type B, a 5/16-inch-thick industrial-grade board with a sanded finish and the appearance of slate. Manufactured by Densit-Barok, Cembonit is comprised of portland cement, silicate and selected fibers, and reinforced with cellulose fibers.

For installation, Parra had the four-by-eight-foot sheets cut to two-by-four-foot panels and stacked intermittently (like coursed ashlar stone masonry) to better complement the proportions of the three-story houses. The surface is similar to stone, yet because they are installed above the surface of the exterior wall, the panels appear lightweight and create a type of extruded volume. Left unpainted, their color changes dramatically from the effects of light and water.

Because fiber-cement expands and contracts, the panels were installed with a half-inch gap in between. "To achieve this, we created a waterproof wall behind the cement boards with the use of galvanized metal," Parra says. "On the galvanized metal we installed two-by-two-inch wolmanized lumber that serves as butters on which the Cembonit panels are attached. The panels are attached to the butters with the use of stainless steel expansion screws that are made especially for use with the Cembonit panels."

PRODUCTS used include: Sominers Building Products; various steel; Hillman, Inc.; various steel; Hillman, Inc.; Form Dri-Fit Systems, Inc.; East American Granite & Marble; various steel; DSI Steel; various steel; various steel; Texas Stone, Inc.; various steel; Jeffrey Forest Products; various steels; Owen Corning; various steels; Spink; various ER Corp.; various Hard Plyk; various steel; various Hard Plyk; various steel; Champion; various steel; Dura-Crete; various steels; Hardwood Products; various KD Dural



FIRST FLOOR



SECOND FLOOR



THIRD FLOOR

- FLOOR PLAN**
- 1 LIVING ROOM
 - 2 DINING
 - 3 KITCHEN
 - 4 BATH
 - 5 BED ROOM
 - 6 CLOSET
 - 7 HALLWAY
 - 8 TERRACE
 - 9 PORCH
 - 10 BED ROOM
 - 11 BATH
 - 12 BED ROOM
 - 13 BED ROOM
 - 14 BATH
 - 15 BED ROOM
 - 16 CLOSET
 - 17 PORCH



BY SUSAN WILLIAMS

Clearly Connected



PROJECT Clear Channel Communications-corporate headquarters

CLIENT Clear Channel Communications, Inc.

ARCHITECT Overland Partners

CONTRACTOR G.W. Mitchell & Sons

CONSULTANTS Lundy & Franke Engineering (structural engineer); Goetting & Associates (MEP); Page Dawson Engineers (civil); Rabe Kibner (Consultants (geotechnical)); The Sage Group (landscape); RYK Group (furniture & interior finishes); Pritchard Associates (project management)

PHOTOGRAPHER Paul Barlagay

WITH THE NEW CORPORATE HEADQUARTERS for Clear Channel Communications in San Antonio, Overland Partners look what could have been a predictable palette of materials—limestone, metal, glass, and wood—and created a project that transcends any expectations those materials might suggest.

Over the last decade Austin chalk limestone has become a cliché of Texas vernacular—a motif popular far beyond the boundaries of Central Texas. “Hill Country”-style apartment buildings and tract mansions and strip centers clad in the white, rough-cut stone abound everywhere from Lubbock to Corpus Christi. By using limestone on the Clear Channel building, along with its familiar partner—metal—for accents, fixtures, and roof, Overland risked association with everything its cutting-edge, high-tech client wanted to avoid.

But, for all the reasons that the creamy stone makes no sense in the red dirt of North Texas or the gumbo of Houston, it makes all the sense in the

world in San Antonio, perhaps even more so on this project. The Clear Channel buildings are, after all, sited on the edge of a limestone quarry—although closed, and now home to the rolling fairways and greens of a golf course. And, even without the imperatives of the site, in Central Texas the stone is abundant and relatively inexpensive, an environmentally friendly choice for durable cladding.

In fact, Overland’s principal-in-charge, Tim Blomkvist, says the firm envisioned the project as being clad in sandstone. Overland had designed a number of recent projects using limestone—including parts of the National Wildflower Research Center in Austin and the South Texas Blood and Tissue Center in San Antonio—and he says the firm wanted to move on to something else. But, in the end, the logic for using limestone was inescapable. The challenge then, Blomkvist says, was to assemble the materials in a way that wasn’t just “the same.”

Dialogue about the palette of materials started early. Discussions between the architect and client focused on both the design of the two-building, 50,000-square-foot complex and the craftspeople who would build it. To design a composition that attained the clarity and discipline desired by the architect and the client, all of the implications and limitations of each material were considered, Blomkvist says. Of particular importance in terms of the stone was the working relationship the architects had developed with the masons, L&T Masonry of Austin, who also worked on the Wildflower Center and the Blood and Tissue Center. That ongoing relationship helped determine the cut and finish of the stone for Clear Channel.

(opposite page) Perfectly suited to its site, the complex sits on the edge of a former limestone quarry and overlooks a golf course. (above) Overland composed the interior spaces with variations on the same material palette used on the facades.

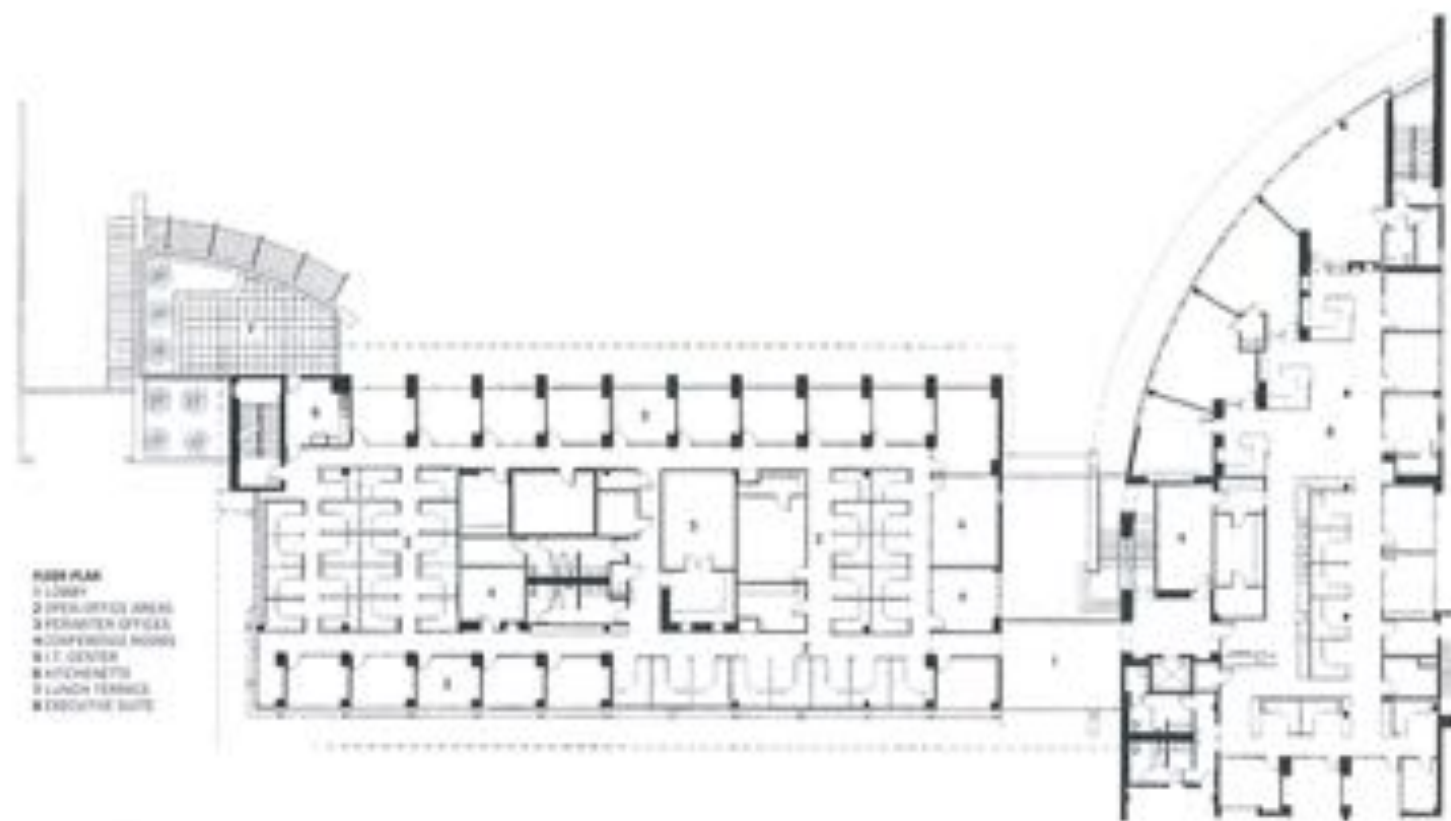
The client wanted a clean, modern look—being an admirer of the travertine at Richard Meier’s Getty Center in Los Angeles—but he also appreciated the tactile heft of more roughly cut stone. The architects and masons met both of those goals by using blocks of stone that were cleanly cut in regular-sized blocks but with an irregular finish, left untouched after the stone was lifted from the quarry. From a distance, the regularity of the blocks reads crisply, while up close the irregular finish provides a rich textural variety. At the same time, the stone was installed to emphasize its weight and heft, both by placing the largest blocks on the tower adjacent to the entry and by using the stone as more than thin cladding, particularly in places where it is allowed to penetrate to the interior.

If the installation of the limestone first challenges, then confirms expectations about its rustic nature, a different kind of misdirection occurs with the steel used for railings, columns, and sunscreening devices. Instead of the galvanized metal that has become the ubiquitous partner of limestone, the steel here has been painted with a two glossy coats of automotive paint in a deep gunmetal gray with purple undertones. From a distance the difference is not obvious, but up-close the effect is altogether sleeker than the weathered splottiness of galvanized metal.



(above) The gently upward curve of the maple ceiling panels maximize the light entering through the conference room's full-length windows. (right) Equally detailed are the elements used outside.





SpecNote: Millwork

The millwork throughout the Clear Channel Communications headquarters complex is maple, including the grand stair in the central lobby, the custom furniture crafted for the executive offices, office walls and partitions, and the curving, convex ceiling panels.

Maple, finished to a golden glow, lightens and enriches the interiors. In the lobby, the maple is finished in two shades, with bands of unstained pale wood outlining the edges of the wide stair as well as the trunks and risers, while the walls are the deeper gold found throughout the rest of the building.

Overland's Tim Blomkvist says his first reaction, when he saw the two differing shades, was to presume the installer had made a mistake. But the longer he looked, the more he liked it. In the end, the dual color scheme stayed. Now it's one of his favorite aspects of the project and, he says, something that would have been lost if he, as architect, had insisted that his vision was the only one that mattered.

The material palette was limited, Blomkvist says, as another way of ensuring the primary goals of orderliness and rigor. Limestone, metal, and greenish-tinted glass make up the exterior, while those same materials along with an abundance of maple millwork compose the interior. In various places, the materials flow seamlessly from outside in. On the east side of the two-story building, battered limestone columns penetrate the window walls to provide an

unexpected massive presence in the offices there. The corrugated metal panels used on the exterior also clad the interior bridge connecting the second level of the two buildings as well as the elevator lobby.

The most remarkable interior feature is the convex flow of the suspended maple ceiling. The glowing wood panels curve up at the building perimeter, but are held back at each edge, allowing the panels to float free of the walls. The curve upward exposes more of the window glass, thus allowing longer angles of natural light to penetrate interior work spaces. In other areas, gypsum-board ceiling panels also appear to float, then are pulled back at the perimeter to reveal full-height sections to the structural ceiling.

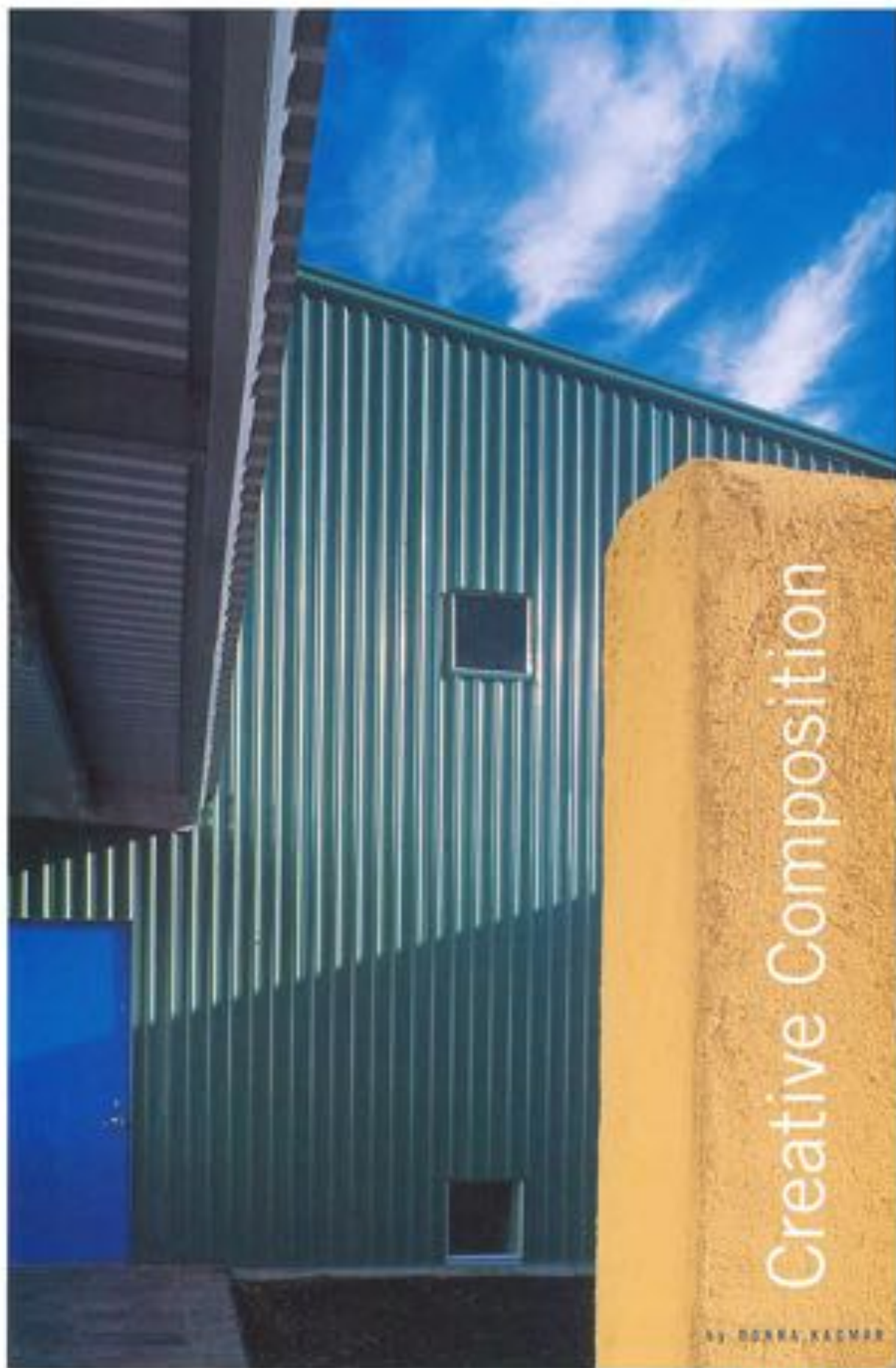
The two-building complex is positioned carefully on its odd-shaped site at the edge of the golf course. From the street, the long western facade of the rectangular two-story building and the mass of the three-story tower with its floating roof canopy dominate. On the golf course side, the three-story mass dramatically curves outward, following the contour of the site. At the opposite end, a curved terrace echoes that knife-edge footprint. The two-story building's western facade is pierced with a series of tall, narrow windows while, on the east, the building opens with large expanses of glass that provide views of the golf course and fill the interior with natural light. The double-height lobby connecting the two buildings is virtually transparent, especially at night when it and the adjacent tower

are lit from within. Although the building is fronted by a parking lot, the expense of concrete is smaller than expected because additional parking was placed underground.

Throughout the project, the detailing is rigorous. Connections between materials are thoughtfully considered and precisely rendered. The location of seams and fasteners in the metal panels, the placement of mechanical systems, control panels, openings, and the arrangement of courses of stone—all of these and more are crafted with a meticulous attention to detail. The rhythm of repeated and layered patterns and materials complicates but does not overwhelm the composition. The result is a project that does not strain for effect but instead attains an understated wholeness and grace. ■

Sean Wilkinson is a former editor of *Architect*.

DESIGNER: TROTTEN; **GENERAL CONTRACTOR:** Delta Granite and Marble, www.deltagranite.com; **INTERIOR FINISHES:** Clear Channel Communications, www.clearchannel.com; **ARCHITECTURAL CONSULTANTS:** TROTTEN; **MECHANICAL/ELECTRICAL/PLUMBING CONSULTANTS:** International Defense Corp., www.internationaldefense.com; **GLASS CURTAIN WALLS:** Republic Doors & Frames, www.republicdoors.com; **DOOR HARDWARE:** Kary Associates, Inc., www.kary.com; **WOODWORK:** Victoria, www.victoriawood.com; **ARCHITECTURAL RENDERING:** Simon Willmetts, www.simonwillmetts.com; **PHOTOGRAPHY:** Spring Windowfashions Dr., Inc.



Creative Composition

BY DORRA KACMAR



PROJECT Smith Photography Studios, Houston
CLIENT Ralph Smith, Smith Photography
ARCHITECT Natalie Appel + Associates Architects
CONTRACTOR Lester Constructors, Inc.
CONSULTANTS Matrix Structural Engineers (structural); Karen Rose Engineering & Surveying (civil); The Office of James Burnett (landscape); Dungan Design (concrete finishing); Patterman Schack & Associates (lighting)
PHOTOGRAPHER Hester + Hardaway

NATALIE APPEL + ASSOCIATES ARCHITECTS WAS ASKED BY Ralph Smith of Smith Photography to provide a new work environment for his growing company. Smith Photography, a leading commercial photographer in the Southwest, specializes in packaging, advertising, and catalog photography for clients including major food corporations, advertising agencies, and design professionals throughout the United States. The program requirements included three photography studios, two commercial kitchens for food preparation and styling, digital studios, offices, and a space for clients to relax or work while they are away from their home office. Many of Smith Photo's clients are from northern climates, and Smith asked for the building to support the creation of more tropical outdoor spaces. Smith also asked that the

building help communicate to his potential clients how his services are provided and sequenced while also creating an environment that is a fun work place for his associates and staff.

The site, a 132-foot x 290-foot flat piece of land in southwest Houston, has several large post oaks and cottonwoods near the street. The immediate context includes large surface parking lots and neighboring metal sheds or concrete block buildings containing light industrial and warehouse uses.

The 13,000-square-foot building program is divided into two long bar buildings, which define a paved entry court and central courtyard with fishpond, pergola, and kitchen garden by The Office of James Burnett. One bar contains the studios, kitchens, workshop, and prop storage, while the other bar houses offices and digital photography studios. The two bars are linked by a client living room, where clients may work or relax during the day long photo shoots yet be available to review and approve shots.

The light frame of the pre-engineered steel building system was selected for its ability to economically enclose the large volumes of space needed for the studios and a workshop. The architect worked with the supplier to manipulate the typical low-slope gable roof forms of this building type to create an

(opposite page) Wild colors of the entry court hint at the creative nature of the work going on inside. (above) For the client lounge, Appel's staff designed custom cabinetry of medium density fiberboard, plastic laminate, and hardware cloth. The entry tower is in foreground.



(opposite page, top) Cable lights set a subdued mood in the client lounge. Photography studios are beyond the entry tower at rear left. (opposite page, bottom) Flush steel access plates are set in the concrete slab near MDF cabinetry.

inward-looking composition of asymmetrical gables and sheds. Smaller scale spaces are made more intimate by a change in materials and smaller punched openings. The tautness of the metal skin cladding of the steel building system is contrasted by the textured stucco wall at the entry.

Color - in the form of green painted metal siding, the yellow stucco wall, and plantings in the courtyard spaces - is used to visually separate the two galvalume-clad bar-shaped buildings. Color is also used in architectural "set pieces" to intensify the circulation sequence in the same way a photographer's set enhances the object being photographed. One moves from the yellow entry wall to the surprise of the blue float door and then into the building through the purple oval entry tower. A long, red prop storage and display wall, skewed to create a forced perspective, defines circulation through the studio wing. Changes in hue also distinguish the serene palette of the office area from the more saturated colors of the highly activated studio and workshop area.

The structural slab was left exposed and was finished in a deep khaki with imprints of film strips provided by the client. Access and service areas are fitted with flush steel flooring which intersects the monolithic nature of the concrete.

Medium density fiberboard (MDF), brightly colored plastic laminate, and hardware cloth paneled cabinetry house the media and refreshment centers which help to separate circulation areas from work or relaxation areas.

The food preparation and styling kitchens are outfitted with MDF cabinetry, low walls of CMU that support butcher-block counter islands, brightly colored plastic laminates, and stainless-steel appliances and equipment. The exhaust hoods in the kitchens are custom finished with contrasting surface treatments which help distinguish the two food styling rooms.

The tactile and visual play of materials and surfaces constantly confronts the visitor: solid mass of the stucco walls contrasts against the light frame pre-engineered steel structure while surprises of color animate the smooth planes of gypsum board. Free-standing cabinetry pieces, inserted in the photography studios, create a dialogue with the container wherein the smooth, white "infinity" walls are pulled from the edges of the container's black box. Even in the restrooms the countertops of glass float away from the wall; the interior walls are clad in gypsum board that stops at 14 feet above the floor to reveal the steel structure. Also in the studios, exposed metal



SpecNote: Lighting

At Smith Photography

Studios, a Tracelite low-voltage cable system proved to be just the right choice for lighting their customer lounge. Natalie Appel specified several different types of lighting systems in the project, but opted for the cable solution (rated for both residential or commercial interior use) to bring the light down to the desired elevation. Using lower-wattage lamps, the client benefits from the system's energy efficiency with lower-wattage lamps positioned closer to the object or space being illuminated.

Jay Leggett of Patterman Schanck & Associates, Inc. in Houston, says the Tracelite system "affords ultimate flexibility for any given lighting application. With low-voltage cable lighting, one can have up-lights for indirect ambient light and accent lights with the same system." Installation is simple, he says—wall anchors attach the cable with a single screw at each end and require only one electrical connection/power supply per group of up to 25 fixtures. In most cases, cable systems are installed without a junction box or canopy cover, thus, producing an attractive, visually discrete lighting solution.

Low-voltage MR-16 lamps (20- to 50-watt) can provide a wide range of beam spreads from very narrow spots (six-degree), to wide floods (60-degree). Appel used narrow floods (25-degree) in the lounge to accent photographs, artwork, etc., and floods (60-degree) to create ambient lighting bright enough for general illumination.

ductwork and cable lights make their roles as assorted pieces very clear.

Natalie Appel + Associates Architects allowed the metal-frame and metal-clad building to do what it is best at doing, containing large volumes of uninterrupted space, and manipulating that space—and the materials in between—to create a new home for Smith Photography that fulfills the client's requirements for a fun place to work. The jury for the 2003 AIA Houston Design Awards saw this project as an exemplary work space, honoring it with a design award earlier this year. Juror Ted Flato, FAIA, described the project as "an extremely elegant place to get to work." ■

Some Kacera practices architecture in Houston and teaches at the University of Houston-Clear Lake College of Architecture.

RESOURCES CONTACT: STEVE BENTON, sbenton@smithphoto.com, 281-481-1111; NATHANIEL APPEL, nappel@smithphoto.com, 281-481-1111; JAY LEGGETT, jleggett@pattermanschanck.com, 281-481-1111; TRACELITE, www.tracelite.com; MR-16 LAMP, www.mr16.com; BRUNN BUILDING PRODUCTS, www.brunnbldg.com; DUTCH-LOTT, www.dutch-lott.com; WARRINGTON CARPET, www.warringtoncarpet.com; WILKINSON BUILDING SYSTEMS, www.wilkinsonbuilding.com.



History Reflected

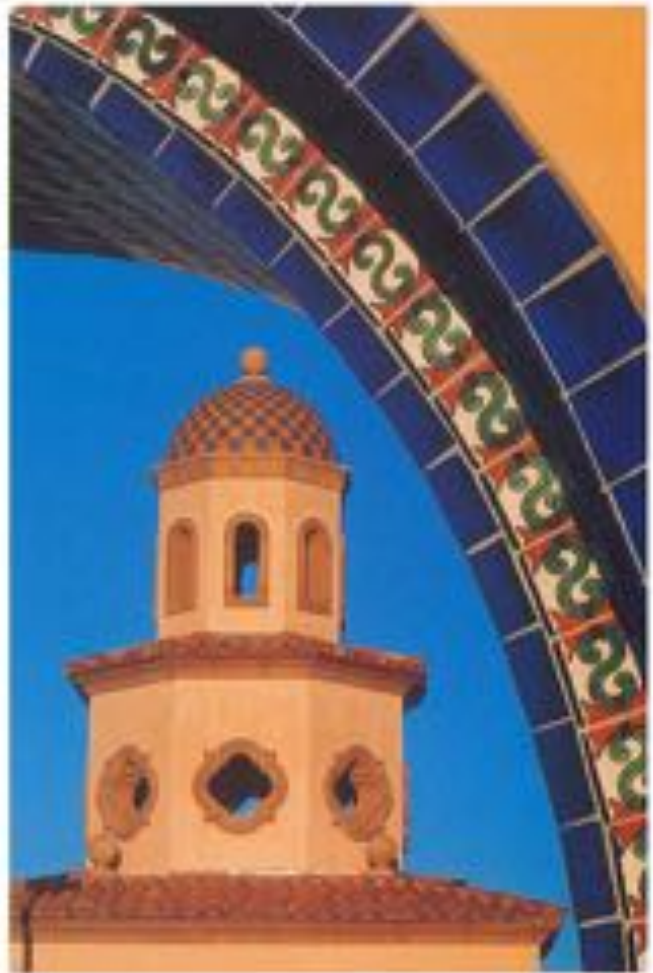
PROJECT TxDOT Travel Information Center, Laredo
CLIENT Texas Department of Transportation
ARCHITECT Ashley Humphries & Sanchez
CONTRACTOR Leyendecker Construction Co.
CONSULTANTS Eschman Engineering (MEP), Foster Engineering (civil), WSC, Inc. (structural), Jim Cooper (landscape)
PHOTOGRAPHER Hester + Hardaway

THE TEXAS STATE TRAVEL GUIDE DESCRIBES Laredo as being rich in south-of-the-border flavor. The guidebook encourages visitors to immerse themselves in its 245-year history by strolling its streets to see the Spanish Colonial architecture and absorbing the ambience of the Hispanic culture so apparent amid the quiet elegance and refined simplicity of the historic La Posada Hotel and other of the city's Old World architectural gems.

That tranquility, however, suddenly disappears when the visitor journeys away from that nostalgic soul of Laredo—especially north along Interstate 35 where the effects of today's booming local

economy jar the historically seduced traveler back to the realities of the modern, post-NAFTA world. Here, along the commercial corridor between the international border and San Antonio, the quietness and serenity is obliterated by the roar of 18-wheelers, the stench of diesel exhaust, and the spectacle of portable toilets lining the highway to accommodate nature's needs for cross-country truckers stuck in the often immovable congestion. The visual simplicity of old Laredo's architectural elegance is replaced by row after row of concrete tilt-up, metal-clad, dock-high 200,000-square-foot boxes incongruously decorated with geometric patterns in an attempt to gain the semblance of individuality. In this bittern, chaotic landscape, these warehouse monstrosities pretend to be "architecture" because "form follows function."

The choice of materials derived from the architectural precedents of Laredo, including the hand-pointed Talavera tile used in many of the structures throughout the complex.



SpecNote: Synthetic Stone

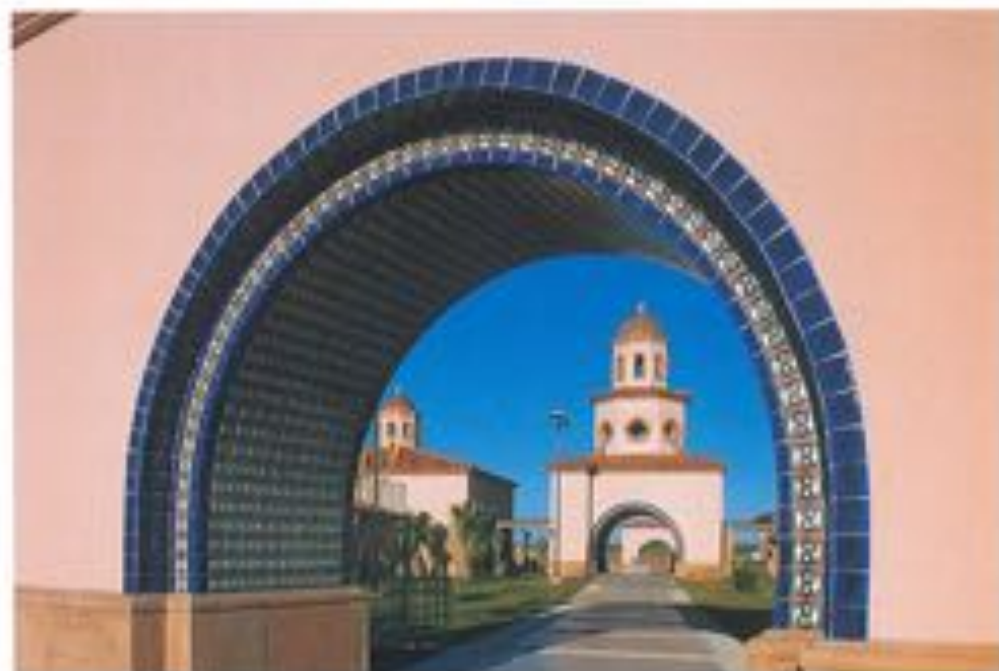
The architects chose architectural precast rather than cast stone for columns, walkways, and trim molding on the Laredo TxDOT Travel Information Center. Although manufacturing processes are similar, architectural precast is less dense and less durable – and less expensive – than cast stone, which makes the lighter product easier to work once delivered to the construction site. In general, architectural precast is used for decorative elements while the stronger cast stone can sometimes substitute quarried stone as structural units.

Neither of the two synthetic materials have the variation, unpredictability, or high cost of natural stone. Manufacturers often state that their products are superior to cut stone while offering a wide array of pigments and “natural” textures complete with voids to more closely mimic the inconsistent surfaces of the real thing. The ability to replicate deteriorating natural stone on existing buildings is touted by manufacturers as making the synthetic products ideal for the remodeling or restoration of historic structures.

For more information, visit the Web sites for the Architectural Precast Association (www.archiprecast.org) and the Cast Stone Institute (www.caststone.org).

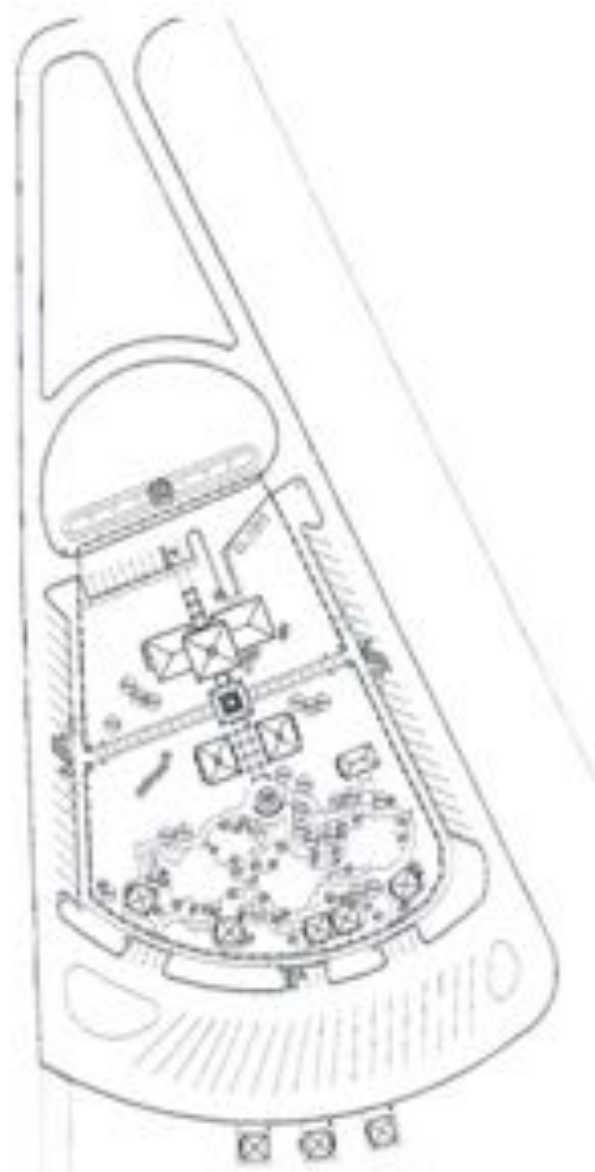
Hoping to help visitors recover from this joltingly harsh contrast, the officials of the Texas Department of Transportation decided to build a new travel information center along I-35. TxDOT requested architects to design a facility that would not only offer a place to obtain tourist literature, but also to provide visitors a place to get out of the heat of the day, to gather their thoughts, and to reflect and possibly recapture the experience of being embraced by the cultural soul of Laredo and South Texas. The challenge was met by the McAllen-based Ashley Humphries & Sanchez Architects who designed a facility that vividly recalls the Moorish and Spanish Colonial architecture of old Laredo. Situated some 18 miles north of Laredo (enough distance to give travelers a little time to recover from the warehouse wars), brightly colored towers emerge on the horizon above the sparse semi-desert vegetation. This is the first hint of a place that – through the blend of forms, shapes, and color, along with the thoughtful use of traditional materials – begins to recapture the architectural experience left behind, encouraging the traveler to pause and investigate.

Visitors enter the complex through one of the massive freestanding archways that, along with a decorative wrought-iron fence, define the perimeter of the compound. A dominant open-arched tower invites them into the core of the facility. From there one can enter the main building which contains



TxDOT administrative offices and an information counter in a spacious high-ceiling vaulted area where travel information is neatly displayed. Also included is a small meeting room for lectures and viewing of videos about the Lone Star State. Opposite the visitors' center is a garden/picnic area that is intimately depressed into the site's north side – “an oasis” in the words of architect James Humphries: a series of three ponds connected by falling water, surrounded by native landscaping, which form the focal point for five covered gambro picnic structures. And in the center of all this, lest visitors momentarily forget where they are, a “State of Texas” sculpture

helps travelers know where they are when they spot Laredo artist Arnaldo Flores' sculpture framed in steel and clad in heavy-gauge bronze. (Below) The central tower rises above the facility, as seen from the architect's “axis” at the picnic area.



created by a local artist, offers the traditional obligatory tourist photo-op.

So, with all that said, why is this place special?

Domes and vaults and arches, yes, but it's the appropriate placement of materials that bring this facility to life. By employing Mexican construction techniques and traditional materials such as colorful Talavera tile, stucco, clay-tile roofing, and wrought iron, the architects have captured that elusive sense of architectural appropriateness. Their efforts are rewarded – as is each visitor – with a built environment from which emanates a simplicity, a touch of patience and calm, a sense of symmetry and bal-

ance, an overall impression of harmony among earth, water, and sky. A world away from the nasty, nerve-racking, NAFTA-inspired noise, this facility successfully reflects the rich cultural mosaic of light and color.

Architecturally speaking, the TxDOT complex serves as a welcome example of the indigenous Spanish Colonial architecture to the traveling public. And, for the hordes of local school children who visit the facility to learn about Texas, it provides a lesson and source of pride about the influence Hispanic culture has on their state. TxDOT should be congratulated for recognizing that often overlooked his-

tory, and for realizing its potential to yield good architecture. In addition, the architects should be congratulated for responding so well to the challenges posed by TxDOT, and for creating an oasis sorely needed in this region burdened, as well as blessed, by the effects of a booming economy. ■

Danny Boudryhous is an architect practicing in Dallas.

PHOTOGRAPHY (clockwise from top left) City River Mo. water over-
crosses spans; CDL warehouse; Brick & Tile Center; workers.
Walmart; east side; Brick & Tile Center; west side; Kmart;
east; Brick & Tile Center; west; Steven-Williams

Texas Scottish Rite Hospital for Children



- KIDS HALL**
- 1 SURGICAL LAUNDRY ROOM
 - 2 OFFICE RECEPTION
 - 3 LABORATORY
 - 4 TREAT ROOM ROOM
 - 5 PHARMACY
 - 6 EXERCISE ROOM
 - 7 TUNICIA PRIVATE ROOM
 - 8 SURGICAL SUITE PRIVATE ROOM
 - 9 RECEPTION



3000-000



2000-000

PROJECT Texas Scottish Rite Hospital for Children, Dallas

CLIENT Texas Scottish Rite Hospital for Children

ARCHITECT HKS, Inc.

CONTRACTOR The Beck Group

CONSULTANTS CCD (MEP)

PHOTOGRAPHER Rick Smith

Since 1974 HKS, Inc. has partnered with Texas Scottish Rite Hospital in Dallas, a facility supported solely through donations which has grown to become one of the nation's leading medical centers providing pediatric orthopedic healthcare services. Most recently, HKS planned major interior renovations to the original hospital (completed in 1977, a joint project between HKS and Beck) to meet the healthcare industry's transition from inpatient to outpatient services. Key Renovations included new clinic waiting areas designed around kid-friendly conceptual themes, such as "The Great Outdoors" which features a colorful mural depicting a camping scene. The "Olympics" waiting area, not shown, is outfitted with sport memorabilia and a 30-foot running cactcock. Skylights in each waiting area help create bright, pleasant spaces for the youthful patients, their families, and the hospital staff. Play areas for kids are also part of the outside grounds. Jeffrey Haven, HKS' director of special projects group, said the firm succeeded in designing interior and exterior environments that encourage and support patients and their families throughout the healing process. (Bottom) Multi-patient wards were converted to private and semi-private suites on the 28,000-square-foot third floor. Designed with bright colors and offering lots of natural light, the new rooms allow for family stayovers, with plenty of storage for personal belongings. Colorful plastic laminate cabinets on the walls conceal medical gases. Also part of the firm's recent work at the children's hospital are a 3,350-square-foot surgery waiting area which features a cylindrical aquarium and a turtle terrarium; a new chapel floor lines the site of the one it replaced; and the 1,000-square-foot Christ Center Urchel Family Resource Center offering reference materials pertaining to medical diagnoses, as well as two computer workstations, conference tables, and lounge chairs.

PRODUCTS **Acoustic Panels and Surfaces:** LAMONA; **Furniture:** Bloomart, Florida, Abet Laminati, Bloomart; **new patient reception:** Formica, Bloomart, Corian (The Corian Co.); **patient beds:** Vancouver Architectural Wood Doors; **ceiling panels:** Pulp Studio, PPG; **ceiling panels:** Demast, Inc.; **Delta Metal Products:** **ceiling panels:** National Gypsum Co.; **USG Interiors:** **ceiling panels:** Armstrong World Industries; **carpet:** Dal-Tile; **ceiling panels:** Nora Rubber Flooring, Grifitt, Armstrong Flooring, Arctry; **new arrival:** **ceiling:** Standard; **ceiling:** **new:** **ceiling:** Maharan, Roll, **new:** Sherwin-Williams

Helpful Hints for Masonry Cleaning

The Construction Research Center at the University of Texas at Arlington publishes *Cleaning Masonry - A Review Of The Literature* which provides detailed recommendations for removing 100 stains from 14 masonry materials using a variety of cleaning agents, methods, and equipment. This article summarizes that report's recommendations for cleaning brick masonry, concrete masonry, concrete, marble, limestone, cast stone, sand-lime brick, granite, flint, slate, sandstone, slate, glazed terra cotta, and glazed tile.

Why Clean?

Masonry should be cleaned to: 1. remove damaging deposits and mitigate future damage; 2. enable surface inspection and repair; and 3. improve appearance. Dirt has a greater surface area than the masonry to which it may adhere. It may, therefore, retain moisture and increase the potential for harmful chemical reactions with substrate. Soluble salts in a dirty crust may be transported inside pores and cracks to cause damaging cryptoflorescence.

Dirt on masonry may be air pollutants, algae, animal feces, ash, bacteria, clay, dust, grit, gypsum, insects, intrinsic stains (e.g. efflorescence and iron inclusions), lime, metallic oxides, organic matter, pollen, sand, smoke, soil, soot, tar, and a host of accidental and intentional stains (e.g. mortar smears and graffiti). Particulate matter smaller than 10 microns is said to be smoke. Dust is between 10 and 75 microns, and grit is larger than 75 microns. The inorganic particles are often bound by gypsum formed by acid rain and calcium salts in masonry materials.

The combination of so many types of stains on various types of masonry generates a multiplicity of

cleaning agents and methods and necessitates the testing of agents prior to widespread cleaning operations. The effectiveness of the cleaning agent and technique should be tested on a small area. For general dirt removal the test area should be about 25 square feet (2.3 square meters) in an obscure location. Judgment of suitability should be delayed for or as long as is tolerable (as much as a year has been suggested), but not less than seven days.

Cleaning Methods

When cleaning masonry, mask lower areas to prevent loosened stain from soiling other surfaces; or keep the lower areas saturated with water to prevent absorption of dirty run off. Remove all stains as soon as possible. Do not smear wet stains by wiping. Soak up wet stains with absorbent materials, e.g. soft cloth or paper towel. Be careful not to smear stain with solvent.

Water Cleaning

The oldest, simplest, and most gentle form of cleaning is dry brushing. Next is water fog, mist, or spray at low pressure. Alternate wetting and drying, at intervals ranging from a few minutes to a few days, is more effective than continuous soaking. Start at the top of walls. Use only enough water to wet the surface, and avoid freezing and leakage into the building. Acidic water must be treated before prolonged application to acid-sensitive surfaces such as marble, limestone, or calcareous sandstone. Water spray is not very effective on granite. The application of water is often followed by manual scrubbing with bristle brush, perhaps with two tablespoons of trisodium phosphate per gallon of water. Use nonmetallic bucket. Do not use detergents containing soluble salts. Water washing of older limestone may produce some brown staining, but subsequent washing will reduce the brown stain, which, in any case, fades with time.

Prior softening of dirt with water spray is very help-

ful. Low pressure has been defined as 100 to 300 psi (0.7 to 2.1 MPa), medium pressure as 300 to 700 psi (2.1 to 4.8 MPa), and high pressure as 700 to 1,200 psi (4.8 to 8.3 MPa). Water applied at moderate pressure at a rate of 3 to 4 gpm (1.89×10^{-4} to 2.52×10^{-4} m³/h) through a fanjet is effective on hard stone or brick. On the hardest stone and brick, water at very high pressure (1,200 to 2,500 psi, 8.3 to 17.2 MPa) can be effective but requires very careful application by experienced operators. Chemicals should not be used with water at high pressure.

Water pressure, volume, temperature, nozzle pattern, angle of incidents, operator skill, and chemical additives all affect the quality of water pressure cleaning. Pressure should not exceed that which would damage the substrate. As the angle of incidence of the water jet to the masonry surfaces increases, the surface pressure increases. The distance from the masonry at which the nozzle is held also affects surface pressure. It is this surface pressure which must be controlled rather than nozzle pressure or pressure at the pump discharge manifold. Most masonry cleaning is done with a fan nozzle, ranging from 15 to 50 degrees, which variable also affects pressure of the water stream at the masonry surface. Water volume is usually in the range of 3 to 6 gpm (1.89×10^{-4} to 3.78×10^{-4} m³/h), but for delicate interior work volumes of less than one gpm (0.31×10^{-4} m³/h). Heated water is useful on greasy surfaces or to improve cleaning ability of chemical solutions during cold weather. Warm water, when used with alkaline chemicals, should not exceed 1600 °F (710 °C). There is no significant advantage to using hot water with acid cleaners.

Steam

Steam cleaning without chemical additives and at pressure less than 60 psi (41.4 kPa) is not injurious to most masonry but is little more effective than cold water, except on heavy incrustation, on a greasy surface, or on chewing gum coated pavement. Steam cleaning is not recommended for surfaces of high artistic value, e.g. monuments. It is time-consuming at about one square foot per minute. Steam is now rarely used for general purpose cleaning.

Mechanical Cleaning

Dry abrasion cleaning may involve hand tools such as chisels, brushes of bristle or stainless steel, or abrasive blocks. Power tools include carbonadium cones, grinding discs and belts, and rotary brushes. Abrasive agents may be blown onto the masonry surface by a blast of air or water at high pressure to scour away the stain. Soft material such as walnut shells, almond shells, ground corn cobs, ground

"Acme Handmades" Open a New Chapter in Brickmaking

Acme's new Elgin, Texas plant which is producing "Acme Handmades" is the first molded brick plant west of the Mississippi. The soft textures, and random folds and edges of this distinctive product will provide an individual look to any project. For more information contact Acme Brick Company at 1-800-792-1234 or at www.acmebrick.com.



coconut shells, crushed egg shells, or silica flour have been used.

Dry Abrasion

Pressure at the nozzle may be controlled by the applicator. For dry abrasion, air pressure may be 20 to 100 psi (138 to 685 KPa) at the nozzle with airflow of 125 to 300 cfm (0.06 to 0.14 cmm). Abrasive material be 00 to 0 mesh in size, but 20 mesh is also used. All openings in the masonry must be sealed, and non-masonry surfaces must be protected.

Some of the masonry surface is inevitably blown away with the abrasive. Careless application will seriously damage the substrate. The method is, therefore, not applicable to carved or polished surfaces or to sanded, coated or glazed brick or terra cotta. The increased surface area of an abraded surface may actually attract more dirt. Sandblasting considerably increases the water permeance of brick masonry. Blasting noise may be a problem. The operator and the environment must be protected from dust and rebounding abrasive. Silica dust can cause irreversible lung damage. The process is not controllable and should be used only in exceptional instances.

Wet Abrasion

Wet abrasive cleaning is similar to dry blasting. Water is introduced into the air stream with the solid abrasive particles. Pressures range from 7 to 43 psi (48 KPa to 296 KPa). The addition of water does not eliminate the harmful effect on life and property of dry blasting, but wet abrasion blasting is less destructive than dry abrasive blasting, and dust annoyance is diminished. The slurry of abrasive particles and water obscures the operative's vision of the surface by covering his/her visor and the masonry. Accordingly, the cleaned surface may be mottled, and a rinsing down after blasting is necessary. Many operatives find the water a nuisance and turn it off in the absence of adequate supervision. Wet abrasion should not be used on smooth or polished surfaces or during freezing weather.

Chemical Cleaning

Chemical cleaning should be performed only when surface temperatures are between 50 and 80 °F (15 to 27 °C). Use stiff fiber brushes to apply cleaning agent on rough textured masonry and soft fiber brushes on smooth masonry. Do not use low carbon steel wire brushes.

Acids

The application of a 10 percent solution of hydrochloric acid to water-soaked brick masonry is the

A Design Check List To Avoid Leaking Masonry Walls

1. Detail flashing at heads and sills of wall openings; at base of wall; and at wall-roof intersection, copings, spandrels, lintels, and shelf angles.
2. Extend coping beyond each wall face and provide drip. Turn out lower edge of metal fascia and coping and provide continuous seal and sealant.
3. Extend flashing outward beyond wall face 3/4 inch (20 mm) and turn down to form drip. Provide sealant in the acute angle at wall face.
4. Extend wall base flashing from wall face inward through one wythe, turn up at least 8 inches (20 cm) and into a reglet or interior wythe.
5. Do not extend stiff flashing longitudinally through expansion or control joints.
6. Provide dams at least 2 inches (50 mm) high at longitudinal ends of flashing, at expansion joints in brick masonry, at control joints in concrete masonry, and where masonry walls meet other wall types or abut columns.
7. Flashing should be continuous, without gaps. Lap at least 6 inches (150 mm) and seal all flashing joints.
8. Provide weep holes 16 inches (400 mm) o/c with 36 inches (900 mm) long masonry units and 24 inches (600 mm) o/c with 8 inches (200 mm) long masonry units at wall face immediately above flashing.
9. Do not permit use of deeply cracked masonry units.
10. Solder courses result in increased water permeance.
11. Mortar air content greater than 12 percent increases water permeance.
12. Provide concave or "V" tooled mortar joints at exterior wall face.
13. Completely fill head and bed joints. Shell bedding of hollow masonry units is acceptable in non-bearing, non-reinforced walls.
14. Keep cavities clean of mortar droppings and other debris. Do not parge cavity face of exterior wythe. Cavity face of interior wythe may be parged to form an air barrier, only if the exterior wythe is built subsequently. Minimum parging thickness is 3/8 inch (10 mm). Require eyes of two-piece ties to be kept clean of parging. Provide minimum cavity width of 2 inches (5 cm). Require rigid board insulation to be well anchored flush with the cavity face of the interior wythe.
15. Wet before laying wet brick having an initial rate of absorption (IRA) greater than 0.67 g/sq in./min (1 g/10 sq cm-min). Do not saturate brick. Before laying, do not wet CMU. Cure CMU walls during hot-dry-windy weather by periodic water mist spray (air temperature >100 °F (24 °C), relative humidity <50 %, and wind >7 mph (11 km/h)).
16. Do not specify sand finished brick where the driving rain index is greater than one.
17. Lay masonry units within one minute after spreading mortar.
18. Use redundant, vented, and weeped sealant joints where possible. Notify building owner that the average life of a sealant joint is seven years. Periodic inspection and maintenance is essential to water permeance integrity.

Source: "Water Permeance of Masonry Walls. A Review of the Literature," *Masonry: Materials, Properties, and Performance*, ASTM STP 778, American Society for Testing and Materials, 1982, pp. 176-199.

Manco



MANUFACTURED CONCRETE, LTD.

*"Prestressed/Precast Concrete Products
For Building & Bridge Construction"*

17910 IH-10 WEST, SUITE 300 • SAN ANTONIO 78257
P.O. Box 690250 • SAN ANTONIO 78269-0250

(210) 690-1705 • FAX (210) 690-1755

Circle 37 on the reader inquiry card

most general method for cleaning brickwork. The following procedure is used:

1. Wait until masonry has cured, i.e. at least seven days;
2. Dry clean, i.e. remove large clumps of mortar with wooden paddle;
3. Protect metal, glass, wood, limestone, cast stone, and vegetation;
4. Soak the masonry from top to bottom;
5. Use nonmetallic acid containers and tools. Add acid to water, not vice versa. Apply the acid by scrubbing with a long handled fiber brush. Low-pressure spray is also used. Clean 10 to 20 square feet (0.9 to 1.9 square meters) at one time;
6. Allow the acid to remain on the wall for three to ten minutes, depending on drying conditions. Do not permit the acid solution to dry on the masonry;
7. Rinse the masonry thoroughly with large quantities of clean water from top to bottom. Where large quantities of water are objectionable as for interior work, neutralize the surface with a solution of one ounce of potassium hydroxide or two ounces of household ammonia to two gallons of water;
8. Repeated once or twice if necessary; and
9. After work on each section, the outside of all scaffolding posts and planks should be washed.

If the wall is not presoaked or if acid is left on the wall to dry, chlorine in the acid may combine with calcium in the mortar to form salt, which can result in efflorescence.

The use of hydrofluoric acid (HF) in a 3 to 5 percent solution will clean efflorescence, but it is a very dangerous material in the hands of unskilled workers. Ammonium bifluoride produces less hazardous solution on granite. HF is used to remove a wide variety of stains but not most paints. It will attack high lime mortar, stucco, and cementitious paint.

Acids may attack free iron in some sandstones and granite which may cause rust stains, in which case a proprietary rust inhibitor or a small quantity of phosphoric acid may be added. Acid may be used on concrete, unpolished granite, unglazed terra cotta, sandstone, and unglazed brick masonry, but not on sand finished brick, limestone, marble, calcareous sandstone, or on glazed or polished surface.

Alkali

Most alkaline cleaners have a sodium, potassium, or ammonium hydroxide base and may be used on

acid sensitive surfaces. Use of caustic soda is discouraged. Ammonium hydroxide is preferable. The dirty surface of limestone, glazed brick, or glazed terra cotta should be pre-wetted to reduce its suction. The cleaner is then brush applied. Rinsing with a mild acid solution followed by a thorough water rinse may neutralize the surface. The process may be repeated once, if necessary.

Solvents

Fats, oils, paints, sealants (caulks), and bitumens are removed by organic solvents, i.e. amines, dichloroethane, trichloroethylene, toluene. Solvents are safely used on calcareous materials and are effective in poultices for removing deep stains. Biological growths, e.g. algae, lichens, and moss are removed by pentachlorophenol in methyl alcohol and alkylbenzene sulfonate in water.

Clyford T. Green is a licensed structural engineer and is the most published American on the subject of masonry, according to the International Masonry Institute. For 22 years, Green was an adjunct member of the architectural engineering faculty at The University of Texas at Austin.



Oldcastle
Architectural Products

Oversize

New Ground Face Grandeur!

Oldcastle takes Ground Face concrete masonry to grand Oversize dimensions. Achieve cut-stone properties with the economy and flexibility of concrete. Enjoy a wide range of precise colors and special chamfered or bullnose shapes, and much more. Oversize your expectations with Oldcastle!

JEWELL
Concrete Products, Inc.
800-792-3216 P.O. Box 7115 - Waco, Tx 76714

Eagle-Cordell
Concrete Products, Inc.
800-933-5509 6415 W. Hardy St. - Houston, Tx 77032

Circle 18 on the reader service card

THE LARGEST MASONRY SUPPLIER IN SOUTH TEXAS



CUSTOMIZE YOUR PROJECT
with Quality Concrete
Masonry Products from

Valley
BUILDERS SUPPLY, INC.
**BLOCK
& BRICK**

P.O. Box Z, Pharr Texas 78577
1-800-242-6470 • (956) 787-3223
www.valleyblockandbrick.com

Circle 3 on the reader service card

Uniquely Geometric

PROJECT Northeast Baptist Medical Office Building, San Antonio

CLIENT Baptist Health System

ARCHITECT Mannon Mok

CONTRACTOR Lyda Contractors

CONSULTANTS Reynolds-Schlattner-Cheffer-Roll (structural), Mannon Mok (MEP), Pope-Dawson (civil), Place Collaborative (landscape)

PHOTOGRAPHER Craig Blackmon, Dror Baldinger

Adjacent to Northeast Baptist Hospital in San Antonio, the new medical office building was designed to accommodate the hospital's ambitious expansion of services. The site for the 145,000-square-foot building was a plot of land on which an existing medical office building had to remain open to the public. New construction came within five feet of the existing office building, requiring the City of San Antonio to issue a special permit. An additional constraint to the building's site was adjacent construction for a new 600-car garage, with both structures scheduled to open on the same date.

The architects approached the design by viewing the building's programmatic components as a series of distinct elements. Rentable floor plates of equal size and little special distinction were expressed as a simple box wrapped in a visually complex skin. An ordinary, off-the-shelf, glass curtain

wall was transformed into a unique statement that has become the building's identifying element. Instead of regarding the curtain wall as a static and monochromatic cast, the glazed exterior surfaces were designed as bold and abstract billboards of glass. The curtain wall is a composition of clear anodized aluminum, graylite one-quarter-inch glass and a rhythmic pattern of white Alucobond panels.

As a programmatic component separate from the leaseable floor plates and as a compositional hinge between the office block and the parking garage, the lobby required its own identity and geometry. As a singular vertical space it serves as a critical counterpoint to the repetitive and horizontal nature of the office floors. The approach to the building's lobby expression took the opposite route to that of the office block. Here, the space was conceived as a complex volumetric interior wrapped in a simple and monochromatic skin. A singular curve of white metal panels enclosed the six-story lobby with vertical openings of varying shapes creating a complex weave of voids.

DESIGNED by MANNON MOK ARCHITECTS, SAN ANTONIO, TEXAS. **CONSTRUCTION** BY LYDA CONTRACTORS, SAN ANTONIO, TEXAS. **PHOTOGRAPHERS** CRAIG BLACKMON AND DROR BALDINGER. **INTERIOR DESIGN** BY PLACE COLLABORATIVE, SAN ANTONIO, TEXAS. **LANDSCAPE ARCHITECTURE** BY PLACE COLLABORATIVE, SAN ANTONIO, TEXAS. **STRUCTURAL ENGINEER** REYNOLDS-SCHLATTNER-CHEFFER-ROLL, SAN ANTONIO, TEXAS. **MEP ENGINEER** MANNON MOK ARCHITECTS, SAN ANTONIO, TEXAS. **CIVIL ENGINEER** POPE-DAWSON, SAN ANTONIO, TEXAS. **CONSTRUCTION MANAGER** LYDA CONTRACTORS, SAN ANTONIO, TEXAS. **PHOTOGRAPHERS** CRAIG BLACKMON AND DROR BALDINGER. **DATE** 2010

(Below left) Exterior view of the curtain wall and lobby of the Northeast Baptist Hospital. (Below) View inside the lobby. (Bottom) The site plan shows the detail of the expansion around the existing office building; photos courtesy Mannon Mok.



TA Online

texasarchitect.org

Texas Building Products, Inc.



Manufacturer of quality CMU's

- Spectra-Glaze™
- Burnished
- Rock Face

All units available in 16x16 and 16x24 sizes

(800) 388-1024

3261 Highway 108 • Strawn, Texas 76475
 Phone (254) 672-5262 • Fax (254) 672-5841
 Email: tbp@txol.net

Circle 22 on the reader inquiry card

Expect more from US Brick

You already know US Brick offers the widest range of color choices in Texas. From the deepest red clay brick to our pastel limestone product to our specialty brick, like the River Rock series (shown here), we have something beautiful to fit every design and taste. And now, US Brick has even more to offer...

Announcing the opening of our second Ogden manufacturing facility, and the introduction of our cored limestone product...the next generation of limestone brick.

Call today to find a showroom near you or speak to a sales representative in your area.

1-888-US Brick or visit us at
www.usbrick.com

US BRICK

Hanson

Circle 23 on the reader inquiry card

Index to Advertisers

Page	Advertiser	Circle No.
67	Accessibility Solutions, Inc.	222
2, 10, 22, 25, 52	Home Building Brands	36
1	AA Trust	34
23	All Seasons Commercial	4
4	Architectfinders	206
61	Audio Visual Innovations	74
46	Areck's Brand of Demco	223
15, 18	Blackman Brick	6
24	Brick & Tile Center	27
14	Control Company	60
18, 22	Construction Specifications Institute (CSI)	73
61	Fagus Smith	97
63	Hausmann & Hausmann	89
60	Jack Evans & Associates, Inc.	8
60	WNEagle Supply	23
6c, 34	Iwell Concrete Products	18
60	L.A. Fussa Partners, Inc.	31
27	Lundy & Franke Engineering	76
53	Manna Products Company	37
10 - 11	Marvin Windows Planning Center	28
9	Masonry & Glass Systems, Inc.	10
15	Miller Blueprint	13
8	NEC America	29
61	Polster Marsh Kinsella	81
6	Peterson Aluminum	63
59	Proctor Building Systems	43
6	Radia-Rutner Consultants	67
62	Sound Reinforcements	54
62	Specialty Concrete	30
6	Spring City Electrical Manufacturing Co.	220
61	Stairway, Inc.	39
10, 16	Texas Building Products	22
15, 57	Texas EPS	181
7	Texas Masonry Council	297
11	Tudon	2
4, 16	US Brick	11
8, 14	Valley Brick & Brick	3
19	Votawall Architectural Products	19
60	Walter P. Bloom	20
21	Wilbert Steel	57
62	Wired Design Group	42
62	Wrightson, Johnson, Hadden & Williams	217
60	York Steel Fabricators	72

Win A Free Vacation Every Quarter!

Spec Writer Dillo Awards

Enter every time you put Teifs in your EIFS spec list!

Teifs Wall Systems invites all Specification Writers to enter our quarterly drawing to win a vacation on us. All you need to do is send in this entry form and verify that you have listed Teifs as an approved manufacturer on an EIFS project. You are eligible for our drawing even if Teifs does not get the job! Odds of winning are based on the number of entries received, and you can enter every time you specify Teifs for a job. There will be a new contest each quarter, whereupon previous entries expire.

Next Drawings: *June 31, 2001 - Las Vegas, NV*
September 31, 2001 - Cancun, Mexico



Yes, I have specified Teifs along with other EIFS Manufacturers.

Note: Entry must be submitted prior to bid date and drawing date. Limit one entry per project; enter as many projects as you'd like.

Date: _____

Name(s): _____

Address: _____

City: _____ State: _____ Zip: _____

Phone: _____ Fax: _____ Email: _____


Job Name: _____ Bid Date: _____

Mail or Fax Entries to Teifs Wall Systems, 220 Barlow, San Antonio, TX 78202

fax: (214) 472-2933 phone: 800-338-4783 e-mail: teifs@teifs.com

Circle 111 on the reader inquiry card

Who designed the Waco Suspension Bridge and the Brooklyn Bridge?

Find out the answer to this and many more questions on "The Shape of Texas."  THE SHAPE OF TEXAS.
Brought to you by *Texas Architect* and your local public radio station.

Who Says a Wall Can't Rock?



Bye, bye boring public buildings. Arriscraft is the versatile stone that makes the plain civic box really rock!

Alexandria Civic Center
ARCHITECTS
JMC Design Inc., Houston
JMC Design Architects, Dallas
GENERAL CONTRACTOR
Kallagher Construction
Management, Dallas
GENERAL CONTRACTOR
Lee Brown, Inc., Dallas
PHOTOGRAPHER
Ray Don Miles, Garland, TX



Arriscraft's Unique Benefits:

- 8 standard colors
- No sealing required
- 4 textures
- Guaranteed for life of building
- Installs like brick
- Custom colors available

Discover the advantages of Arriscraft stone.



Blackson Brick Co.

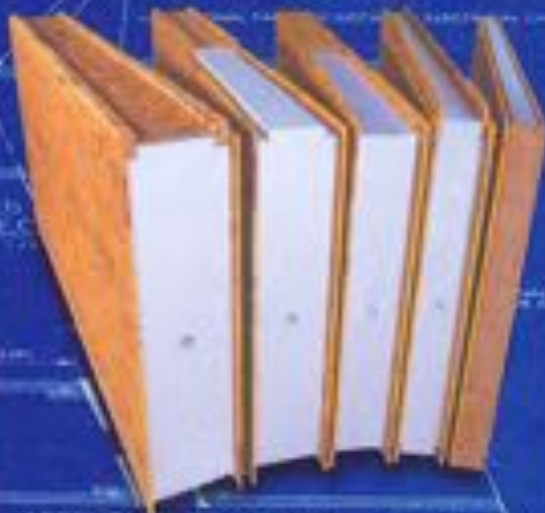
black.brick@airmail.net 214-855-5051 www.blacksonbrick.com

New to Texas, not new to technology.

Premier Building Systems® may be a new player in the Texas structural insulated panels (SIPs) business, but with 33 years in the building industry, we're the leader in SIP technology, testing, quality control, and innovation. Our commitment to furthering SIP technology shows in our testing, we communicate with our customers, and we stand behind our product—Premier Panels®.



More states are choosing Premier Building Systems as their key to successful building projects. Texas—it's your turn now. Meet the new kid on the block. We think you'll like our style. Discover Premier Building Systems—the better way to build today.



Premier Building Systems offers the most trusted, tested, and respected building system on the market today.

- Insulated, precast Premier Panels include electrical chases and window openings; superior strength and insulatory value will significantly reduce heating and cooling costs.
- Insect resistant—foam core and panel skins treated with natural borate inhibit infestations.
- Fire resistant—modified flame-retardant EPS foam core insulation.
- IRC, IES, and Japanese Article 38 approved, UL listed.

Premier Building Systems—Texas

2930 Commerce Street, Dallas, Texas 75226
214-741-6815 • 1-800-240-6691

Visit our Web site at www.pbspanel.com

©2011 Premier Building Systems, a Division of Premier Industries, Inc. All rights reserved. Premier Building Systems and Premier Panels are registered trademarks of Premier Building Systems.

"Stately and Sustainable" continued from page 18


face, sides, and back and partial recycled gypsum in the core. All paints and other finish coatings are water based and are low or no-volatile organic compounds (VOC).

Colored cementitious toppings are used for hard surface flooring to reduce environmental impact. Resilient flooring and other flooring products were selected based on their "green" qualifications. The choice of carpet stemmed from the manufacturer's commitment to sustainable manufacturing processes. Specific product selection was based on high-wear performance, recycled material content, and ability to minimize use of adhesives in installation.

The REJ building represents a sincere effort on the part of a multi-disciplinary team to research and employ building materials in a creative and responsible manner. While design team leaders—myself and Wendy Dunning, both from Page Southerland Page, and Mick Kennedy from Cotera Kular Negrete—had primary responsibility for broad design direction, consultants such as Bob Berkebile from BNM Architects, Jane Pulaski from the State Energy Office, and especially Gal Viton from the Center for Maximum Potential Building Systems contributed invaluable specialized expertise. In addition, dozens of industry representatives played essential roles in supplying data and other production and performance information.

Together, the design team sought a comprehensive and holistic view of material usage and its impact. Concerns, shared by all team members, ranged from visual and functional to technical and environmental. Trade-offs between various benefits and costs were deemed to be inevitable and appropriate. Throughout the decision-making process the importance of highlighting materials selection as a primary design parameter took consistent priority—a factor which left a strong and lasting imprint on both the character and performance of the Robert E. Johnson Legislative Office Building. ■

Lawrence Speck, FRA, dean of the University of Texas School of Architecture, practices architecture in Austin.



Improve Your View

Legendary craftsmanship and roofing character for discerning architects:

- Ludowici Clay Tiles
- Hilltop Slate
- North Country Black Slate

Available from the manufacturers' exclusive representative

J JEH/EAGLE SUPPLY, INC.

888-534-1800 512-351-5445 Fax 512-354-0554
 Address: 2000 N. Colleyville, Fort Worth, TX 76112-1532, Arlington, Missouri

Circle 23 on the reader inquiry card



L.A. FUESS PARTNERS
 Structural Engineers
 Dallas, Texas

Circle 31 on the reader inquiry card

JEACOUSTICS
 Engineering/Vibration/Acoustics of Noise Solutions

5800 Mesa Drive, Suite 180
 Austin, Texas 78731-3742
 512-371-0800 Fax 512/371-0825
www.JEAcoustics.com



ARCHITECTURAL ACOUSTICS
 SOUND ISOLATION
 MECHANICAL NOISE & VIBRATION
 ENVIRONMENTAL NOISE

Circle 6 on the reader service card

Experience and Imagination

Structural		
Civil	Houston	WALTER MOORE ENGINEERS AND CONSULTANTS www.waltermoore.com
Traffic	Dallas	
Parking	Tampa	
	Atlanta	
	Ottawa	
	Texas City	

Circle 20 on the reader inquiry card

ytf YORK ytf
METAL FABRICATORS, INC.
 800.255.4703

Award-winning craftsman for award-winning projects

NOMMA CSI ABC AGC
 CUSTOM CRAFTED HANDRAILS SINCE 1963
 Specializing in Stainless, Bronze, Brass, Aluminum
 Ornamental, Glass, Pipe, Pickets, & Custom Handrails
WWW.YORKMETAL.COM

27 N.E. 29th (73105) 405.528.7495
 P.O. Box 18149 Fax - 405.528.7428
 Oklahoma City, OK 73154 e-mail - info@yorkmetal.com

Circle 72 on the reader inquiry card

FUGRO SOUTH, INC.

Geotechnical Engineering,
Construction Materials Testing and
Geophysical Engineering

Austin	(512) 444-3233
Beaumont	(409) 840-5551
Corpus Christi	(361) 892-5411
Dallas	(972) 484-8301
Fort Worth	(817) 589-2428
Houston	(713) 778-5533
San Antonio	(210) 655-8516
Waco	(254) 840-2252
Lake Charles, Louisiana	(337) 439-1731

Pavement Consulting

Fugro/BRE (512) 346-0870
(formerly Brent Raftel Engineering)

Providing our services in Texas and
the southwest since 1946.



Circle 17 on the reader inquiry card

PMK
Pelton
Marsh
Kinsella

- ◆ Acoustics
- ◆ Theatre Planning
- ◆ Audio/Video Design
- ◆ Theatrical Lighting
- ◆ Rigging & Machinery Design
- ◆ Broadcast Design
- ◆ Vibration & Noise Control
- ◆ Safety Evaluations

Dallas - (214) 868-7444
Miami - (305) 868-1531
Las Vegas - (702) 938-5800

Circle 18 on the reader inquiry card

Audio Visual Innovations™

Audio Visual Innovations is the national leader in presentation technologies and systems integration. We have the most experienced team of specialists, uniquely qualified to implement all aspects of your audiovisual requirements.



Audiovisual Systems for
Presentation Environments

3210 Belt Line, Suite 124, Dallas, Texas, 75246
Tel: (972) 243-4422 • Fax: (972) 243-5450 • www.avinc.com
(800) 630-4022

Computer Classrooms • Distance Learning Facilities • Military Briefing Rooms
Training Rooms • Conference Rooms • Video Conferencing Facilities
Government Commission Chambers • Auditoriums • Boardrooms

Circle 14 on the reader inquiry card



ANY SIZE
STEEL • ALUMINUM
WOOD • BRASS
STAINLESS

Shipped in a Complete
Unit or Kit
\$425 & up

Stock for Fast Shipping
Free Brochure
713-680-3110
Toll Free
1-800-231-8793
Fax: 1-713-680-2971
www.stairwaysinc.com



4166 Pinemont
Houston, TX 77018

Circle 20 on the reader inquiry card



SPECIALTY CONCRETE 210-646-8124
P.O. Box 34373
SAN ANTONIO, TEXAS 78205-4373

www.specialtyconcrete.net

Circle 30 on the reader inquiry card

**WORRELL DESIGN GROUP**
Houston, Dallas**Representative Clients:**

Austin Museum of Art • G.R. Brown Convention Ctr.
Chase Bank • Compaq Computers
FDOP Detention Ctr. • GTE • Memorial Hermann
M.D. Anderson Cancer Center • Rice University
Charles Schwab • SMU Meadows Museum
The Woodlands Conference Center & Resort
TAMU Special Events - Kyle Field - Reed Arena

(713) 784-4299

scott@worrelldesign.com

Circle 42 on the reader service card

ACCESSIBILITY SOLUTIONS, INC.

*Plus Reviews and Inspections
for Architectural Barriers Act*

JOE CAVALIERE
President

43414 Woodway
Magnolia, Texas 77254

(281) 396-2299
(253) 669-6957 fax

www.accessibility-texas.com

(800) 796-8320 pager

ceo@accessibility-texas.com

Circle 223 on the reader inquiry card

Sound Reinforcements

Sound, Video and Stage Lighting Professionals

www.soundreinforcements.com

Design/Build Audio & Visual Production Company
Churches - Sports Facilities - Theater - Schools

410 NE Wilshire Blvd., Burleson, TX 76008

(817) 295-9903

(800) 755-6541

Circle 34 on the reader inquiry card



Consulting and Design Services in Acoustics,
Sound, Noise Control, Multi Media, Video,
Broadcast and Theatrical Systems

Dallas • San Antonio

BILL HADDON
Principal

13714 Geneva Road, Suite 110
Dallas Texas 75244
817.404.3700 (voice)
817.404.3720 (fax)
billhaddon@wjhw.com (email)
www.wjhw.com (internet)

WRIGHTSON, JOHNSON, HADDON & WILLIAMS, INC.

Circle 212 on the reader inquiry card

what architect was named

"A National Historical Monument"

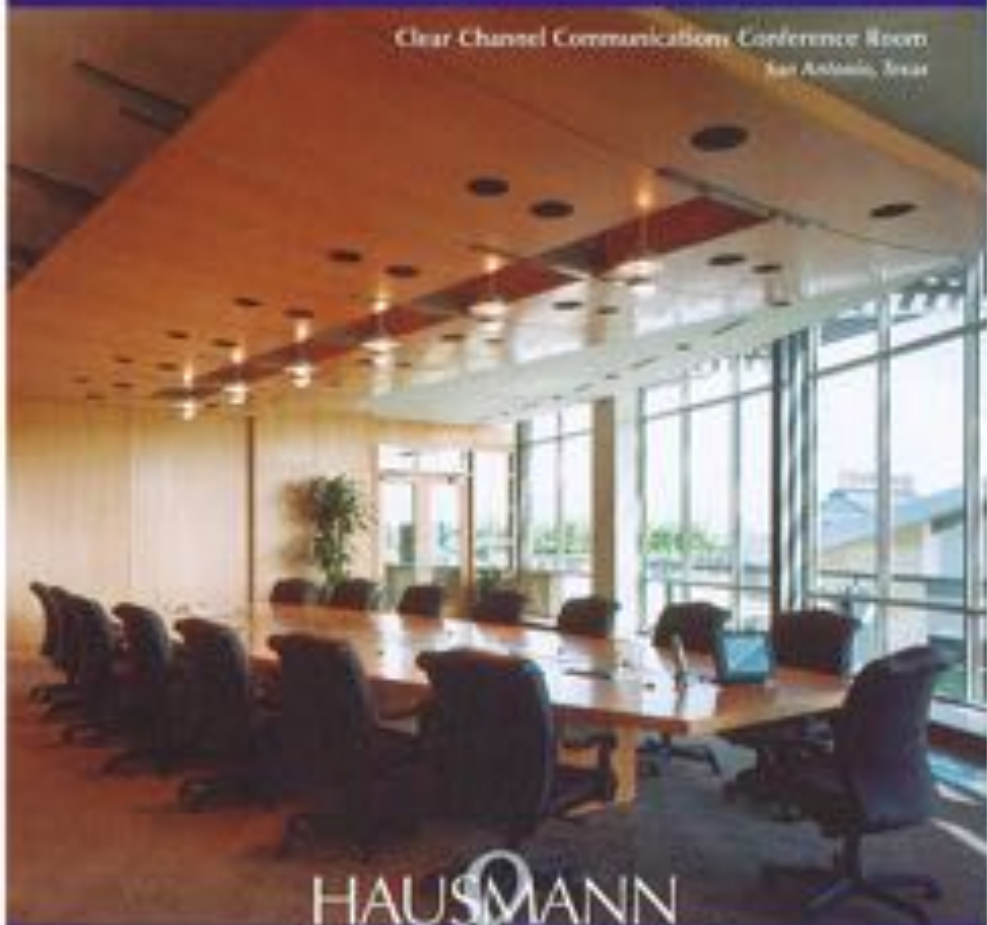


Find out the answer to this and many more questions on "The Shape of Texas," THE SHAPE OF TEXAS. From 10 to 5pm by Texas Architect and your local public radio station.



Blending Craftsmanship and Imagination into Creative Solutions

Clear Channel Communications Conference Room
San Antonio, Texas



HAUSMANN

ARCHITECTURAL WORKSPACE & FURNITURE SYSTEMS

HAUSMANN

www.flexfurniture.com



210.734.9090

texasarchitect.org

110 Tons of Steel, and Growing

A sculptor in West Texas welds his dream home



FOR 26 YEARS I HAVE BEEN SCULPTING THIS house on a canyon rim outside of Lubbock. It rises on four legs and stands 45 feet off the ground, cantilevered over a cliff, 150 feet above Ransom Canyon.

I haven't so much built to have it as build to do it. The material itself is very appealing to work with. It is strong in both compression and tension, and when welded it becomes a continuous membrane. Steel also permits the creation of nearly organic, sculptural shapes far beyond the conventional limits of typical house construction. I wanted a structure with a complexity that could only be realized at full scale, the design process occurring during construction rather than preceding it. This means that there is constant full-scale feedback from what is already designed, as well as feedback from the site itself through the annual cycle of seasons. It also means that on occasion a finished section may have

to be cut out and reworked to incorporate new design developments.

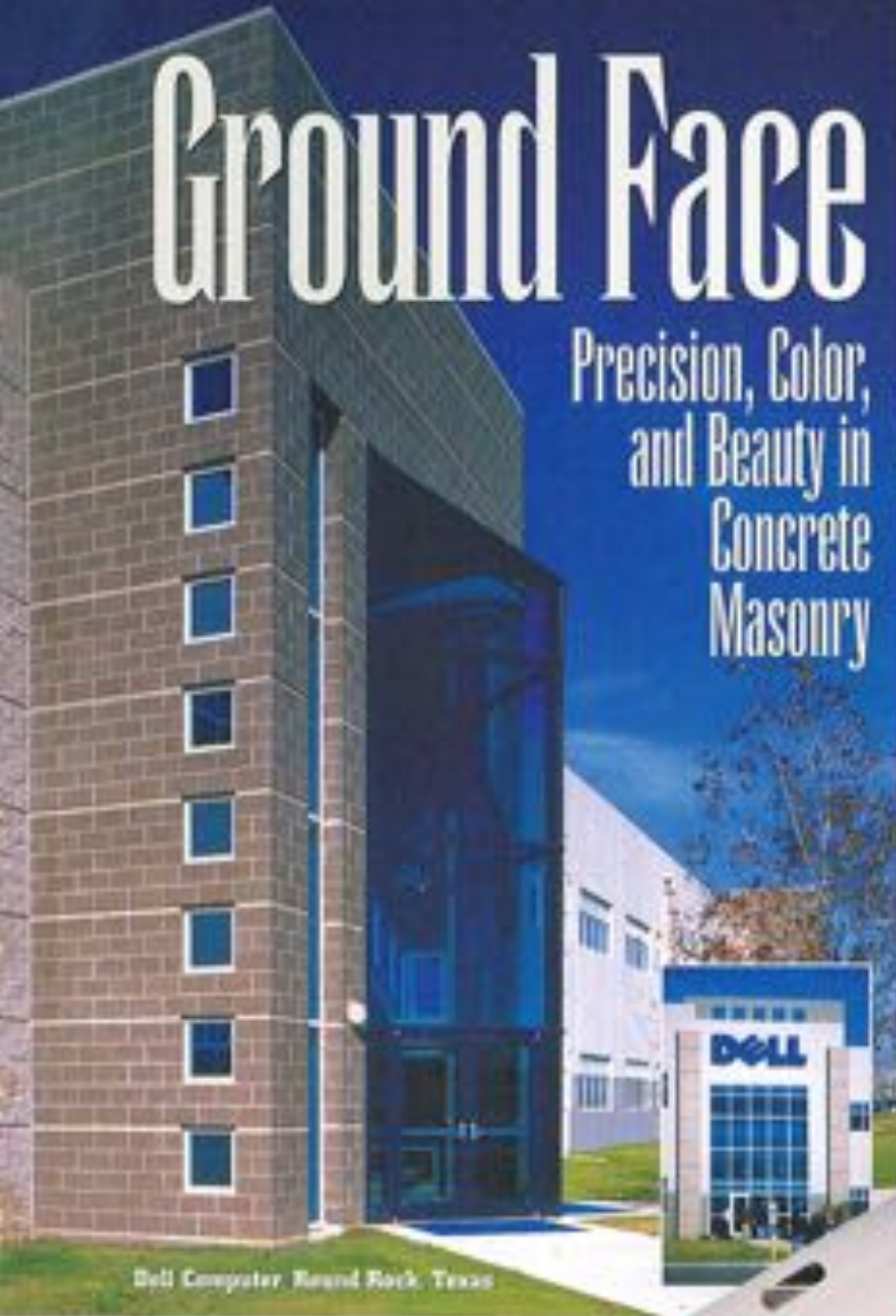
The structure is made of 3/8-inch and 3/16-inch steel plate, and the skin itself is its own support. The exterior will be left to rust. About two-thirds of the interior, which is a separate layer, is also exposed steel. The free-form interior spaces unfold two bedrooms, two and one-half baths, living, dining, kitchen, library, and a large loft planned as a guest room and patio. Irregular shapes defined by seams within the free-form window frames will open to the canyon's natural breezes and updrafts. One of the legs will house an elevator. I expect to be finished within a year.

ROBERT BRUNO

Sculptor Robert Bruno taught studio courses for eight years at Texas Tech University's College of Architecture.

Ground Face

Precision, Color,
and Beauty in
Concrete
Masonry



Dell Computer, Round Rock, Texas

 **Oldcastle**
Architectural Products

Robinson High School, Waco, Texas

Please call to receive your
Oldcastle unit feature samples,
each with a Ground Face, Split Face,
and Decor-Face finish.



Master the Fine Ground-Face Detail

Oldcastle Ground Face Concrete Masonry unlocks the rich, detailed beauty of concrete aggregate. Our state-of-the-art computer-controlled batch mixer creates a precise color mixture for Ground Face masonry. We grind the face of cured block to reveal the aggregate below. The result is an appealing finish for the full spectrum of construction, a rare combination of warmth and extreme durability. Use Ground Face masonry as the dominant facade material, or combine it with split-face or other concrete block to create intriguing accents on your next project. Count on Oldcastle companies Jewell and Eagle-Cordell for all your concrete masonry needs in Texas. Please call for more information about

Ground Face masonry and our newly expanded product line and increased production capacity.

Oversize Ground Face units are now available in 16x16, 16x24, and 24x24 sizes! Please call for details.


Concrete Products, Inc.
800-792-3216 P.O. Box 7115 · Waco, Tx 76714


Concrete Products, Inc.
800-933-5509 6415 W. Hardy St. · Houston, Tx 77022

Circle 18 on the reader service card



Austin-Bergstrom
International Airport

See your sales take off!

"Instead of just relying on the accolades of DuPont Corian® surfaces' 30-plus-year track record, we prefer to harness the power of Texas Architect's link to the architectural community. Advertising in Texas Architect allows us to keep Corian® on the architect's mind and reflects our support of the architecture profession by sponsoring a valuable communications medium in today's overwhelming information age."

— Cathie Cappelle Green,
Commercial Segment Manager
The Corian Company
Manufacturer and marketer
of DuPont Corian®

Our targeted circulation and quality editorial ensure that your marketing message will cut through the clutter to impact the decision-makers you want to reach... each and every issue.

For more information on advertising in Texas Architect, contact

Carolyn Baker
Advertising Representative
502.69.7012
cbaker@texasarchitect.org

Juday Duneto
Associate Publisher
502.69.7286
juday@texasarchitect.org

TexasArchitect

The voice of Texas Architecture