



# THE TEXAS ARCHITECT

O C T O B E R

1 9 6 5



OCTOBER

1965

COVER:

The molded forms  
enclosing the Sanctuary and Chapel  
identify the worship area.  
Walls of concrete were perforated with  
apertures for colored glass  
in the Sanctuary  
and great expanses of faceted glass  
are cast in the structural concrete  
walls of the Chapel.

The build-up  
of the masses of the structure  
as the Temple rises  
on the slope of rugged Mt. Franklin  
creates an image  
of the function of the  
architecture.

Official Publication of  
**THE TEXAS SOCIETY OF ARCHITECTS**

The Texas Regional Organization of  
 The American Institute of Architects

Don Edward Legge, A.I.A., Editor  
 James D. Pfuger, Associate Editor  
 John G. Flowers, Jr., Managing Editor

327 Perry - Brooks Building, Austin, Texas

Published monthly by the Texas Society of Architects in Austin. Subscription price, 50¢ per year, in advance. Copyrighted 1951 by the T.S.A., and title registration applied for with the U.S. Patent Office.

Editorial contributions, correspondence, and advertising invited by the Editor. Due to the nature of the publication, editorial contributions cannot be purchased. Publisher gives permission for reproduction of all or part of editorial material herein, and requests publication credit be given THE TEXAS ARCHITECT, and author of material when indicated. Publications which normally pay for editorial material are requested to give consideration to the author of reproduced by-lined feature material.

Appearance of names and pictures of products and services in either editorial copy or advertising does not constitute an endorsement of same by either the Texas Society of Architects or the American Institute of Architects.

**TEXAS ARCHITECTURAL FOUNDATION**  
 327 Perry-Brooks Building, Austin, Texas

**TSA OFFICERS FOR 1965**

George F. Harrell, F.A.I.A. .... President  
 Dallas  
 George S. Sowden ..... President Elect  
 Fort Worth  
 Daniel Boone, Abilene ..... Vice President  
 Louis Daeuble, El Paso ..... Vice President  
 Douglas Steinman, Beaumont ..... Vice President  
 Howard R. Barr, Austin ..... Secretary-Treasurer

**TSA DIRECTORS FOR 1965**

Llewellyn W. Pitts, F.A.I.A. .... Regional Director  
 Beaumont  
 George F. Pierce, Jr., F.A.I.A. .... Past President  
 Houston  
 Jack Corrigan, A.I.A. .... President, Texas  
 Dallas  
**Architectural Foundation**  
 John J. Luther ..... Abilene Chapter  
 E. Earl Merrell, Jr. .... Brazos Chapter  
 Phillip L. Bible ..... Austin Chapter  
 William S. Whittet .... Coastal Bend Chapter  
 Harris Kemp ..... Dallas Chapter  
 Duffy B. Stanley ..... El Paso Chapter  
 Joseph J. Patterson ..... Fort Worth Chapter  
 Gunter Koetter ..... Houston Chapter  
 Howard Schmidt ..... Lubbock Chapter  
 Gayle D. Wilhite ..... Lower Rio Grande  
 Valley Chapter  
 Eugene Elam ..... North Texas Chapter  
 R. J. Reinheimer, Jr. .... Northeast Tex. Chapter  
 Thomas A. Noonan ..... San Antonio Chapter  
 Mike Mebane ..... Southeast Texas Chapter  
 Earl W. Parge ..... Texas Panhandle Chapter  
 Johnnie C. Fields ..... West Texas Chapter  
 James D. Witt ..... Waco Chapter  
 John G. Flowers, Jr. .... Executive Director  
 Austin



# THE TEXAS ARCHITECT

VOLUME 15 / OCTOBER 1965 / NUMBER 10

## *The International City*

El Paso and Ciudad Juarez, situated on either side of the fabled Rio Grande, are two separate, distinct cities. But in a larger sense they combine to form the "International City". Together they constitute the most populous gateway on the United States-Mexico border. Together they form one of the world's largest bilingual cities.

Cradled in a fertile valley between the Franklin Mountain range and the Huego Mountains, the International City is a homogenous blend of two nations, two cultures and two languages. While the special influences of Mexican social and philosophical attitudes make architecture south of the Rio Grande distinct from that north of the border, four centuries of near-common history, tradition and practices have made cross-fertilization natural and apparent.

Interesting among the obvious are materials considered most appropriate to the region. Both in Mexico and the United States, in Juarez and in El Paso, the use of concrete and masonry seems to be a common denominator. Long the traditional material for building in Mexico, it seems natural, given the same climatic conditions, the same topography, the same kind of craftsmen and labor force, and so often similar basic requirements, that certain materials should find a universal usage.

It is natural, too, that new ways to utilize old materials should be sought and that new forms should be found to give more meaningful expression of the two changing, neighbor-cultures.

New and unfamiliar shapes possible in thin-shell construction contrast with the old rectilinear city forms; old structural systems are articulated into bold shapes that harmonize with the familiar geometry of adobe buildings; structural components are modulated and repeated into strong rhythms; materials themselves develop into rich, integral ornament reminiscent of the cities' mutual colonial heritage.

While differences seem obvious, the common inheritance of El Paso-Juarez is there—loved and used.

# EL PASO - CIUDAD JUAREZ



CHARRO RING JUAREZ

ARCHITECTS: FRANCISCO ARTIGAS  
AND LUIS ARTURO GIL

*While the nature of the sport of the Charros dictates the shape of the ring, it is nevertheless subject to contemporary interpretation, utilizing new and better structural systems while reflecting the proud traditions of the Charros.*

# THE INTERNATIONAL CITY

MASSACHUSETTS MUTUAL BUILDING    EL PASO  
ARCHITECTS: GARLAND AND HILLES

*A character of elegance is established with utilitarian components. Concrete masonry units make a screen that provides privacy to office space and protects from the desert sun. Uncomplicated as it is, the building might have been plain and homely, but with care and concern it is simple and handsome.*





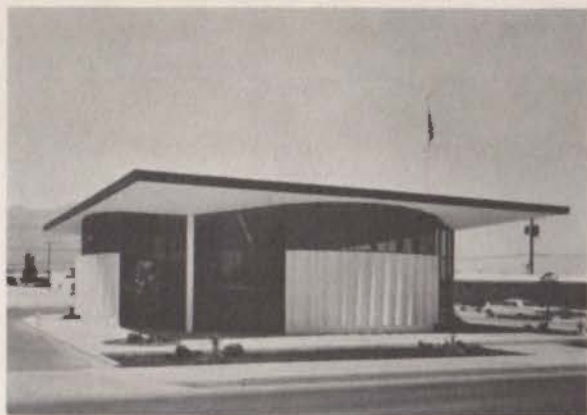
SOUTHWEST NATIONAL BANK EL PASO  
ARCHITECTS: THOMAS E. STANLEY

*Two multi-story towers, one housing offices, the other hotel facilities, rise from a common base structure. While obviously utilizing North American products and philosophy, this business complex still displays some influence from south of the Rio Grande.*



MOREHEAD SCHOOL EL PASO  
ARCHITECTS: DUFFY B. STANLEY & ASSOCIATES

*A hundred concrete hyperbolic paraboloids form the roof of this two-acre school. Pioneered in Mexico, this structural system, leaving the walls free from loading, appears on this side of the River applied to new uses and new interpretations.*



SUNRISE BRANCH  
EL PASO FEDERAL SAVINGS & LOAN EL PASO  
ARCHITECTS: NESMITH AND LANE & ASSOCIATES

*Displaying the American urge to utilize non-traditional shapes and forms and find new uses for old material adapted to industrial processes, this small branch office is circular in plan with enclosing walls of precast concrete panels.*

# EL PASO - CIUDAD JUAREZ



JUAREZ RACE TRACK JUAREZ

ARCHITECTS: JAMES W. BIRD, FREELAND AND BIRD

*Tourists expect a different environment when across the international border and Mexicans respect and cherish their heritage. Contemporary in form and system, the Juarez Race Track achieves a Mexican character through the use of familiar materials, masonry and concrete, glass tile, native woods and murals of Mexican artists.*

# THE INTERNATIONAL CITY

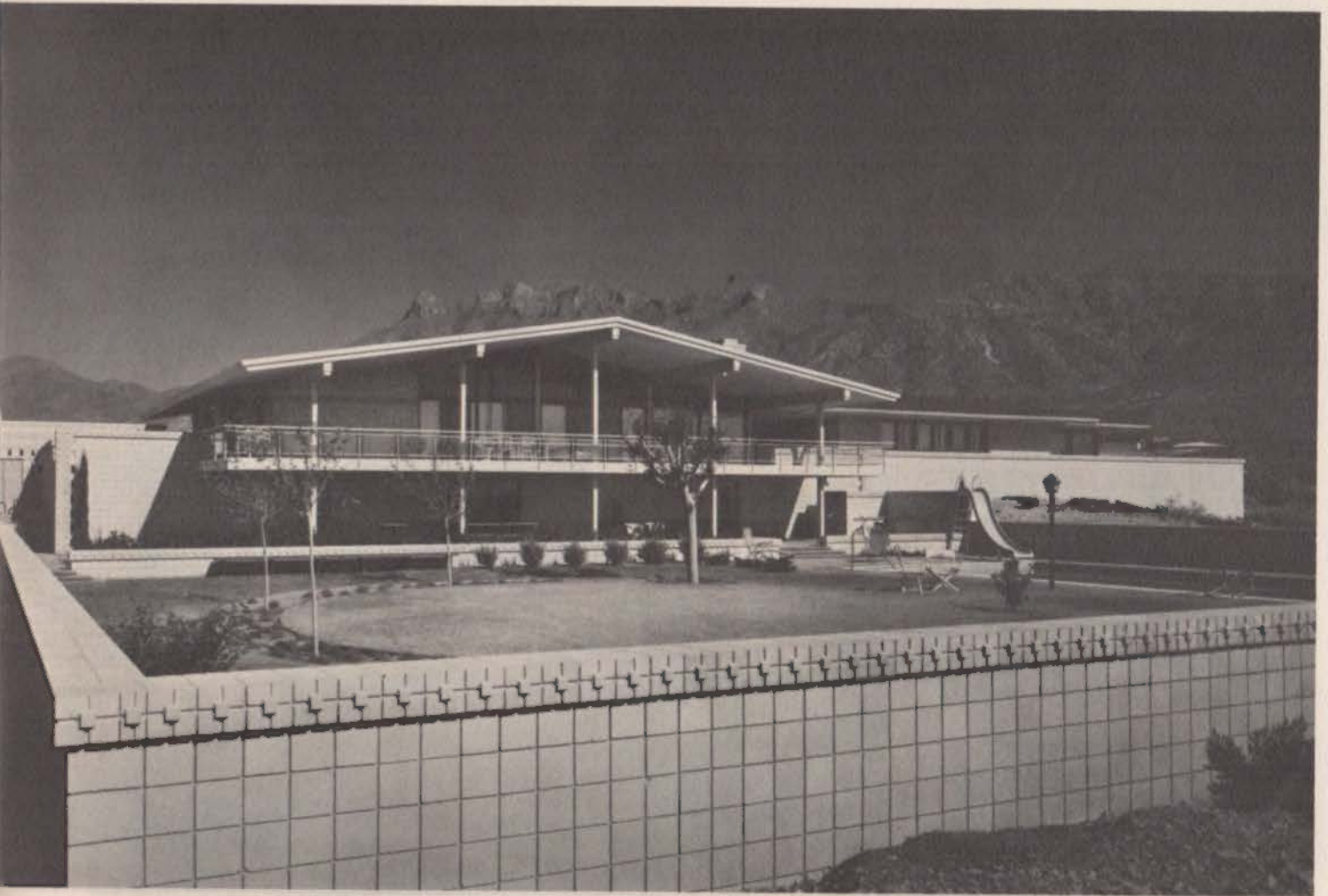


CORONADO STATE BANK EL PASO  
ARCHITECTS: GARLAND & HILLES

*The oldest of structural systems—the simple post and beam—has been exploited in this small suburban bank to achieve an integral ornament. The establishment of a basic structural spacing, then sub-dividing that space, and articulating the structural components, has created a dignified, yet lively building.*



# EL PASO - CIUDAD JUAREZ



HAMMOND RESIDENCE EL PASO  
ARCHITECTS: GARLAND & HILLES

*Major living areas open out across a broad porch toward a view of the mountains. The horizontal planes of the masonry walls are defined by finials of specially cast decorative blocks.*



LIBERAL ARTS BUILDING  
TEXAS WESTERN COLLEGE EL PASO  
ARCHITECTS: CARROLL AND DAEUBLE & ASSOCIATES

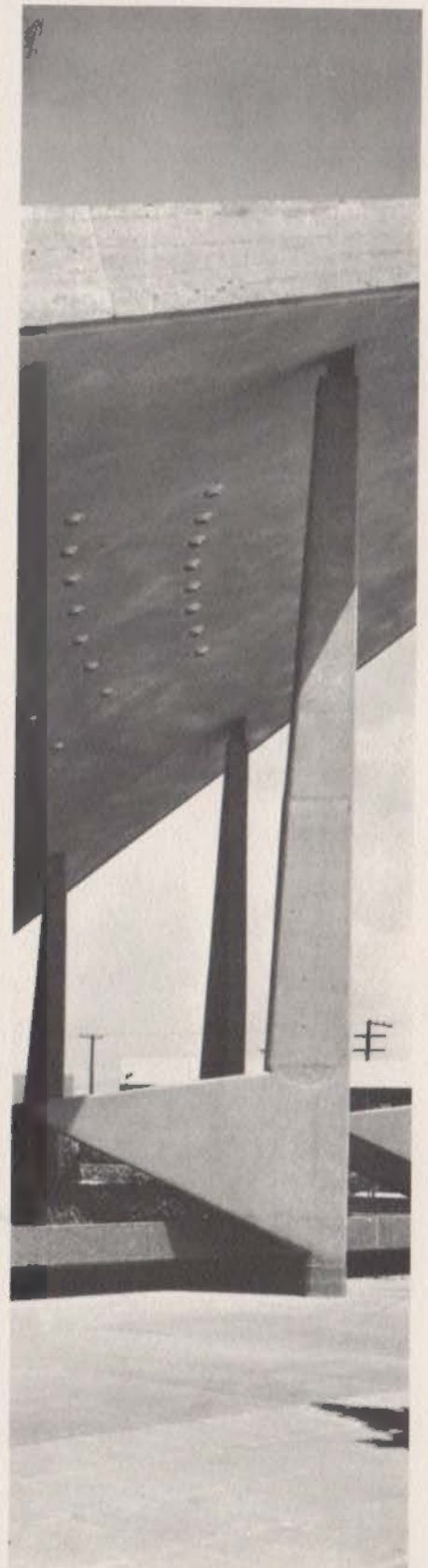
*Battered concrete columns reflect the shape and character of earlier buildings on the campus. By straddling a large and active arroyo a difficult site has been utilized.*

# THE INTERNATIONAL CITY



CONVENTION CENTER JUAREZ  
ARCHITECTS: ENRIQUE MOLINAR  
MARIO PANI & ASSOCIATES

*Great hyperbolic paraboloids form an immense column-free space. Boldly shaped columns ring the structure giving it scale and heightening the drama of the great roof. The marks of the forms, left showing in the concrete, seem to give a clarity to the plastic shapes.*



# THE INTERNATIONAL CITY



SUN TOWERS HOSPITAL    EL PASO  
ARCHITECTS: CARROLL AND DAEUBLE & ASSOCIATES

*A monolithic concrete frame is surrounded by glass and precast exposed aggregate horizontal and vertical louvers for control of the desert sun. In a climate that is cruel to most exterior materials, this enclosure will require little maintenance.*

MUSEUM OF ART AND HISTORY    JUAREZ  
ARCHITECTS: PEDRO RAMIREZ VASQUEZ  
MARIO PANI & ASSOCIATES

*Bold conical shapes of rough concrete hover over walls of volcanic stone and embrace the great translucent plastic dome of the Museum of Art and History. Inside the drama of the physical space and soft filtered light from the dome make an atmosphere that sharpens the awareness of the long history of a proud people.* ■





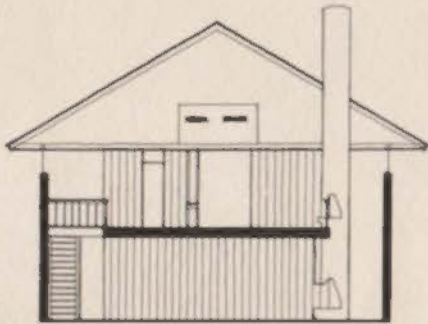
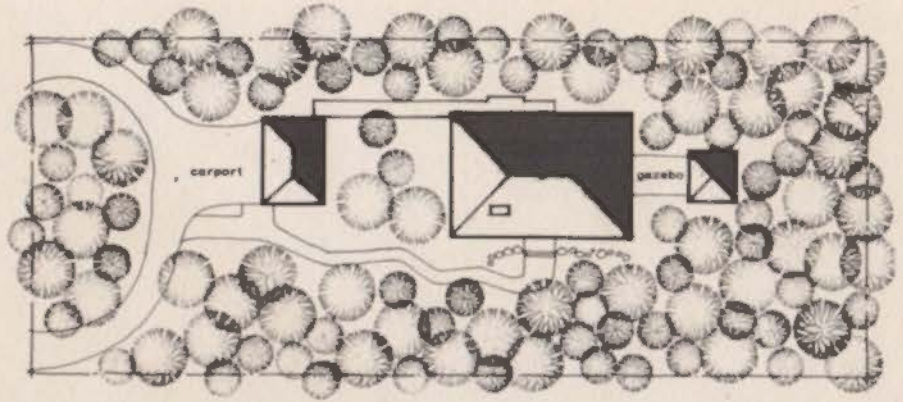
TEXAS ARCHITECTURE 1965  
HONORED FOR DISTINGUISHED DESIGN

BULLOCK RESIDENCE, HOUSTON  
CAUDILL ROWLETT & SCOTT  
ARCHITECTS AND PLANNERS

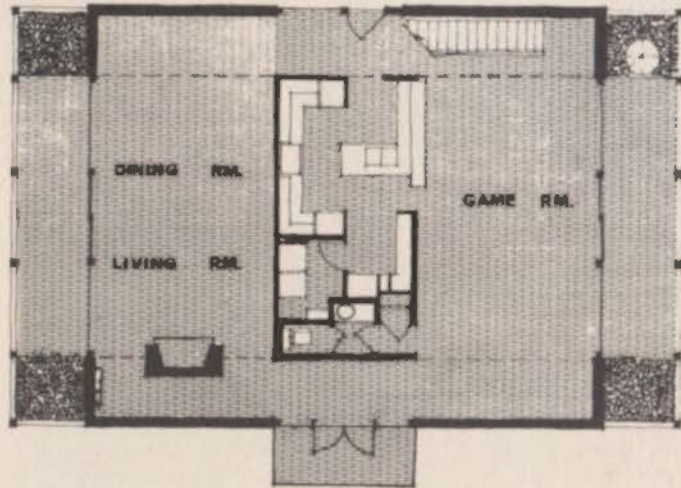
The jury that selected Tom Bullock's house for an award had this to say about it:  
*"A beautifully organized and simple house which combines a logical use of regional motives with a satisfying clarity in plan, section and structure. The setting-in of the bedroom floor from the exterior wall creates a great variety of spatial play by the use of the simplest of means and lends a generous vertical quality to all of the major living areas. The exterior form of the house with its strong and simple geometry serves as a successful counterpoint to the surrounding density of foliage."*



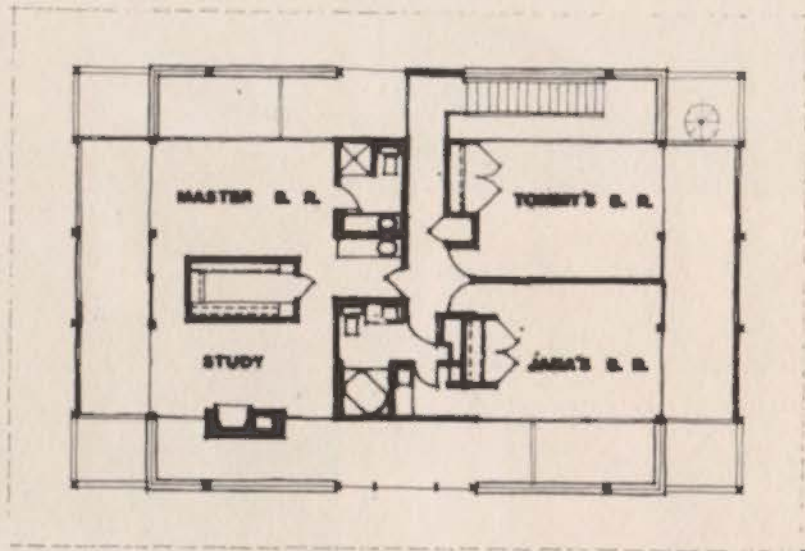
# BULLOCK RESIDENCE



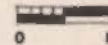
SECTION 



FIRST FLOOR PLAN



SECOND FLOOR PLAN



*The large roof rests on tall rough-hewn cedar posts about the exterior and on the walls of the central core which houses utility areas. This core extends to a third floor attic to become an air-conditioned room for off-season clothing storage.*





*The large supporting posts reflect the tree-forms and establish the vertical nature of the house; the inset balcony and wide overhang recall early days in Texas.*



*The house is open, both horizontally and vertically. This multi-directional visual flow gives the feeling of lightly defined space—and always in communication with the beauty of the site.*



*New shapes of contemporary furniture rest happily in an atmosphere of ageless ease and quiet beauty.*



*Dignity, good taste, and an expression of character at the entry.*



*Concern and care, attention to the small things, a gentle touch, create this kind of lasting beauty.*



**TILT!**

***Hamilton***  
Dial-A-Torque does it  
with a fingertip touch!



Hamilton's exclusive Dial-A-Torque puts a new slant on drafting table efficiency. Now a fingertip touch tilts the board to any angle ... and counterbalancing automatically compensates for varying weights and pressures. "Firming up" no longer needed. The advantages of Dial-A-Torque and the way it eliminates time-stealing, temper-triggering adjustments are obvious, but we'd like to tell you more: How Hamilton space-saving design can reduce drafting room space costs as much as 43%; how Hamilton "human engineering" can perk performance by 10% to 21%. We will tell you more soon as you send for your free Hamilton catalog.

**SEE RIDGWAY'S NEW ROCKET FOR FAST, SMOOTH, CLEAN ERASURES!**



Quiet, powerful, cool-running motor—light and superbly balanced for handling ease—easiest to load, to operate—octagonal motor housing prevents table roll-off—handy storage hook—rugged, durable construction—UL approved. Order your new Ridgway rocket now!

***Ridgway's***

P.O. Box 36150 • Houston, Texas • 77036  
Hamilton Drafting Room Furniture and Files • Reproduction Materials  
Architects and Engineers Supplies

**T**HE *Texas Architectural*

*Foundation offers*

*scholarships in*

*architectural education*

*and sponsors research*

*in the profession.*

*Contributions may be*

*made as memorials:*

*a remembrance with*

*purpose and dignity.*

TEXAS ARCHITECTURAL FOUNDATION  
327 PERRY-BROOKS BUILDING  
AUSTIN

ANNOUNCING

**JOSAM**

THE **NEW**  
**ABSORBOTRON<sup>®</sup>**

**SHOCK ABSORBER**

Now, Josam can state without reservation that it has developed the one and effective means of controlling hydrostatic shock pressures and water hammer — with the new ABSORBOTRON Shock Absorber. Years of testing gives positive assurance that when installed on any plumbing system and sized properly the ABSORBOTRON will effectively and permanently reduce shock pressures to within safe limits that do not exceed 150 P.S.I. (the normal working pressure at which all ordinary plumbing systems are designed to greater safety). The secret is in the new elastomer type bellows. Write for Manual SA-4.



**JOSAM**

District Representatives

**JOE P. DILLARD & ASSOC.**  
1531 Edison Dallas 7, Texas  
Phone: RI 8-7708

**R. B. ARNOLD COMPANY**  
P. O. Box 10695  
Houston 18, Texas  
Phone: OV 6-5591

**JOSAM MANUFACTURING CO.**  
Michigan City, Indiana

## ELEGANT TERRAZZO CUSTOMIZES YOUR DESIGN

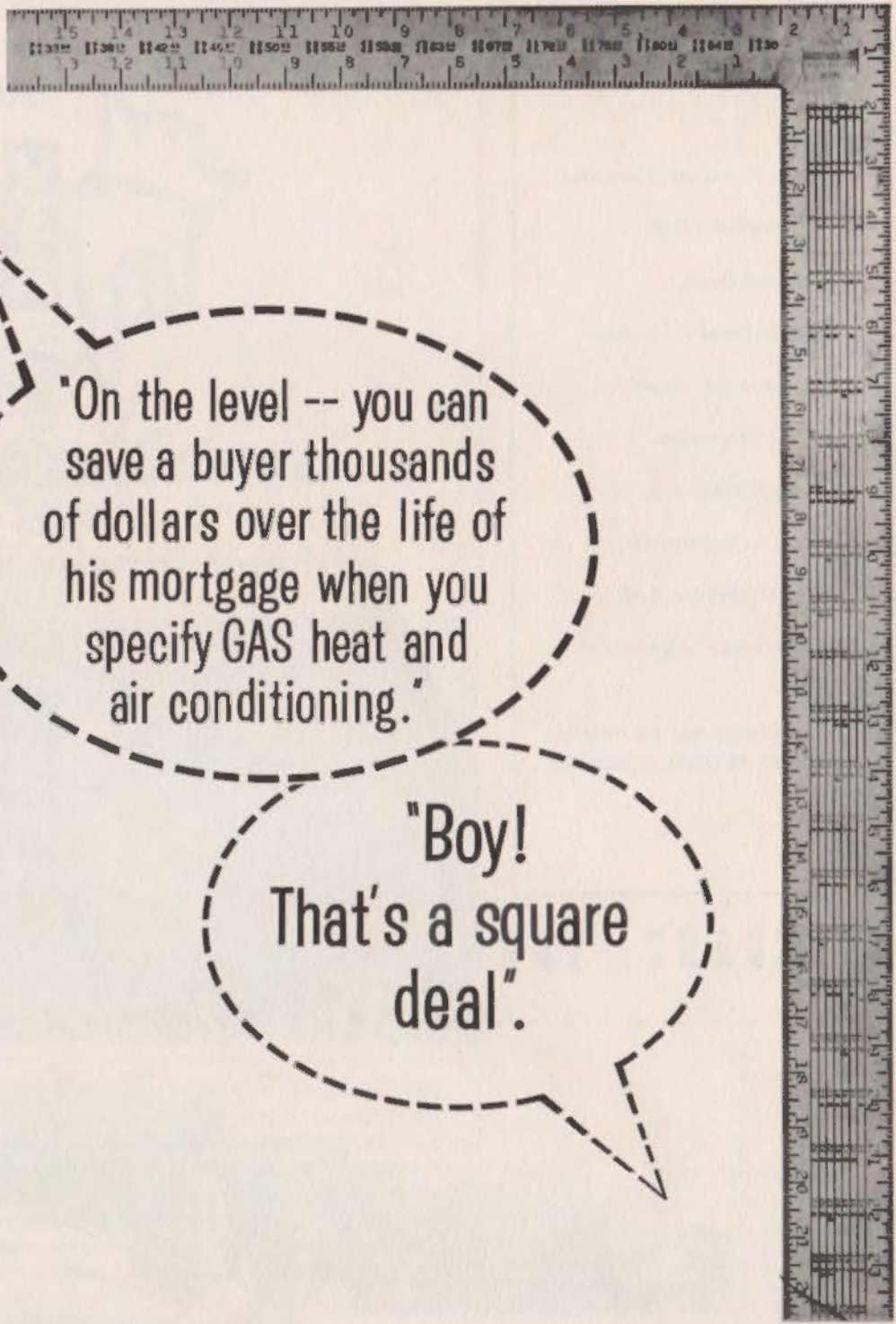
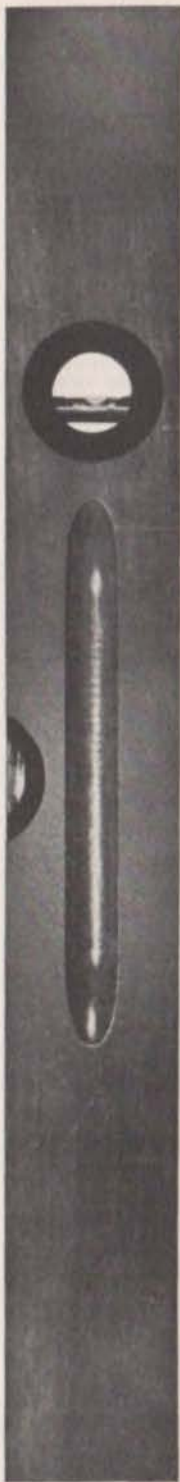


**Texas Terrazzo Contractors Association, Inc.**

Clarence E. Moore, Jr. - 1906 Terbet Lane, Fort Worth, Texas 76112

Executive Secretary - Texas Terrazzo Contractors Ass'n.

Architectural Representative - National Terrazzo & Mosaic Ass'n.



"On the level -- you can save a buyer thousands of dollars over the life of his mortgage when you specify GAS heat and air conditioning."

"Boy!  
That's a square deal".

It's easy to sell an all-gas home when you can promise prospective home-buyers big savings — and know they'll be delivered. Together, gas heating, air conditioning, cooking, water heating and landscape lighting can save a home buyer thousands of dollars over the life of his mortgage. So why not put this built-in selling advantage into your next home?

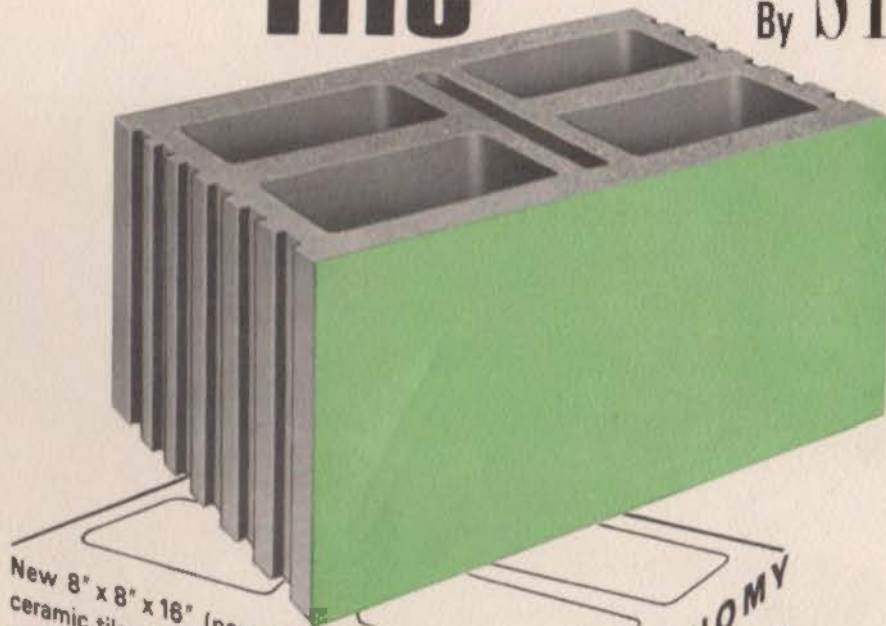
Get full details from the builder department of your local gas utility.



**FOR MODERN BUILDING . . . GAS IS GOOD BUSINESS**

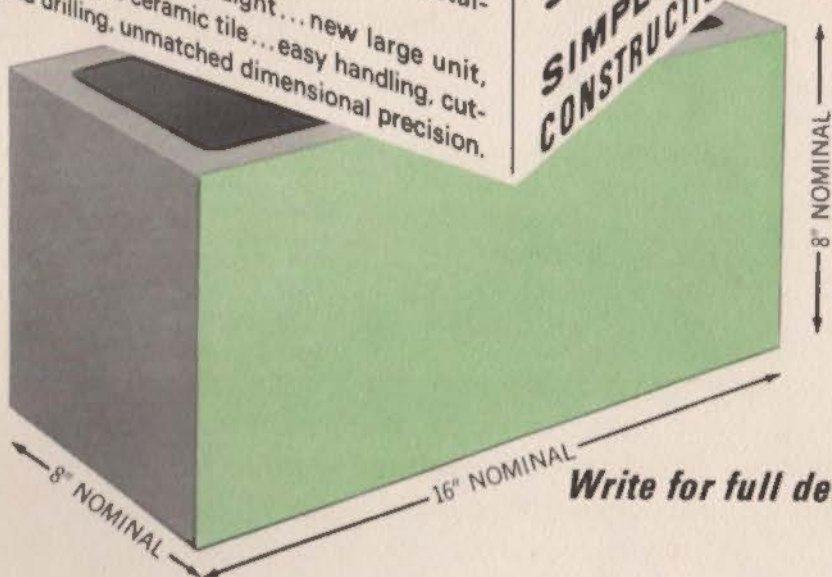
# NEW Super-Tile

By **STARK**



New 8" x 8" x 16" (nom. dim.) structural glazed ceramic tile offers full 8" wall finished both sides and features unmatched by other "wall" products or systems... structural strength, lowest maintenance, permanent finish, zero flame spread, sanitary easy-to-clean surface and wall installation cost reduction up to 50%. Check, too, on Star-Light... new large unit, light weight ceramic tile... easy handling, cutting and drilling, unmatched dimensional precision.

**ECONOMY  
PRECISION  
STRENGTH  
SIMPLIFIED  
CONSTRUCTION**



*Write for full details*

## Acme Brick Company

- Amarillo ■ Abilene ■ Lubbock ■ Midland ■ Wichita Falls ■ Ft. Worth
- Dallas ■ Longview ■ Beaumont ■ Houston ■ Corpus Christi ■ San Antonio

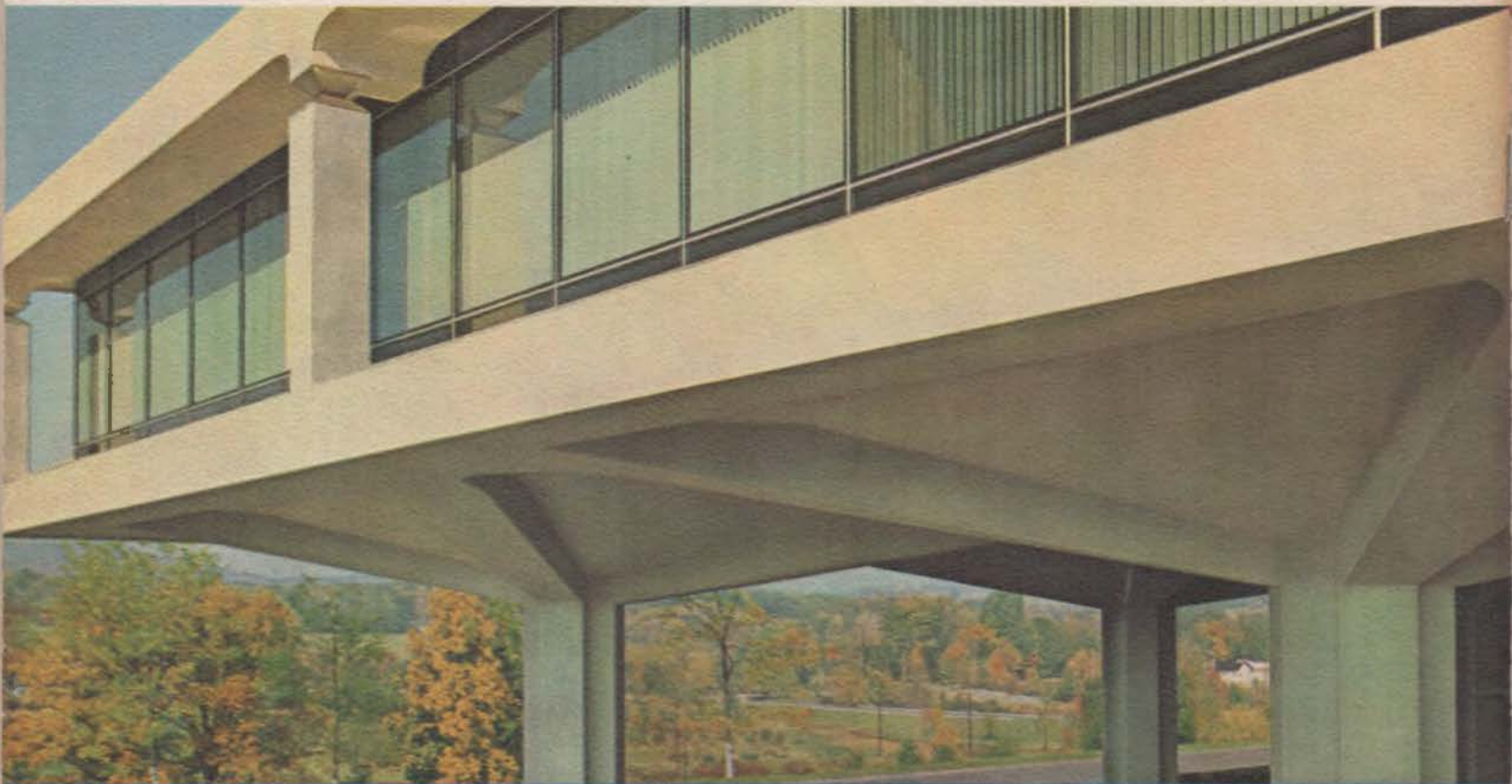
TEXAS ARCHITECT  
P. O. Box 152  
AUSTIN, TEXAS

RETURN REQUESTED

BULK RATE  
U. S. POSTAGE

PAID  
AUSTIN, TEXAS  
PERMIT NO. 1301

Mr. G. Santa Miller  
833 South Bellvue  
Tulsa, Texas



## "TREEHOUSE" FOR ENGINEERS...POISED ON A FOREST OF CONCRETE PILLARS

Atop the outreaching branches of 42 "trees" of reinforced concrete, the Emhart Manufacturing Company's unusual new research building sits 22 feet above its site.

For the large staff of engineers housed here, the building gives an impressive view of the countryside, as well as a feeling of spaciousness in the work areas. It also creates ample space for protected, out-of-sight parking, with the concrete providing the required fire-resistant barrier.

Color and textural interest are given the roof fascia, perimeter

columns and slab edges through use of precast sections of white cement concrete, etched to expose the pale gray granite aggregate.

Concrete adds new dimensions to architecture . . . a freedom of form possible with no other material. (Write for a free copy of "Concrete Profiles for Industry." U.S. and Canada only.)

### PORTLAND CEMENT ASSOCIATION

110 East Eighth St., Austin, Texas 78701

An organization to improve and extend the uses of concrete

## THE BEST IDEAS ARE MORE EXCITING IN CONCRETE



Emhart Manufacturing Company headquarters, Bloomfield, Conn. Architects: Skidmore, Owings & Merrill, N.Y. Engineers: Paul Weidinger, N.Y., and Weiskopf & Pickworth, N.Y. (structural), and Syska & Hennessy, Inc., N.Y. (mechanical).

