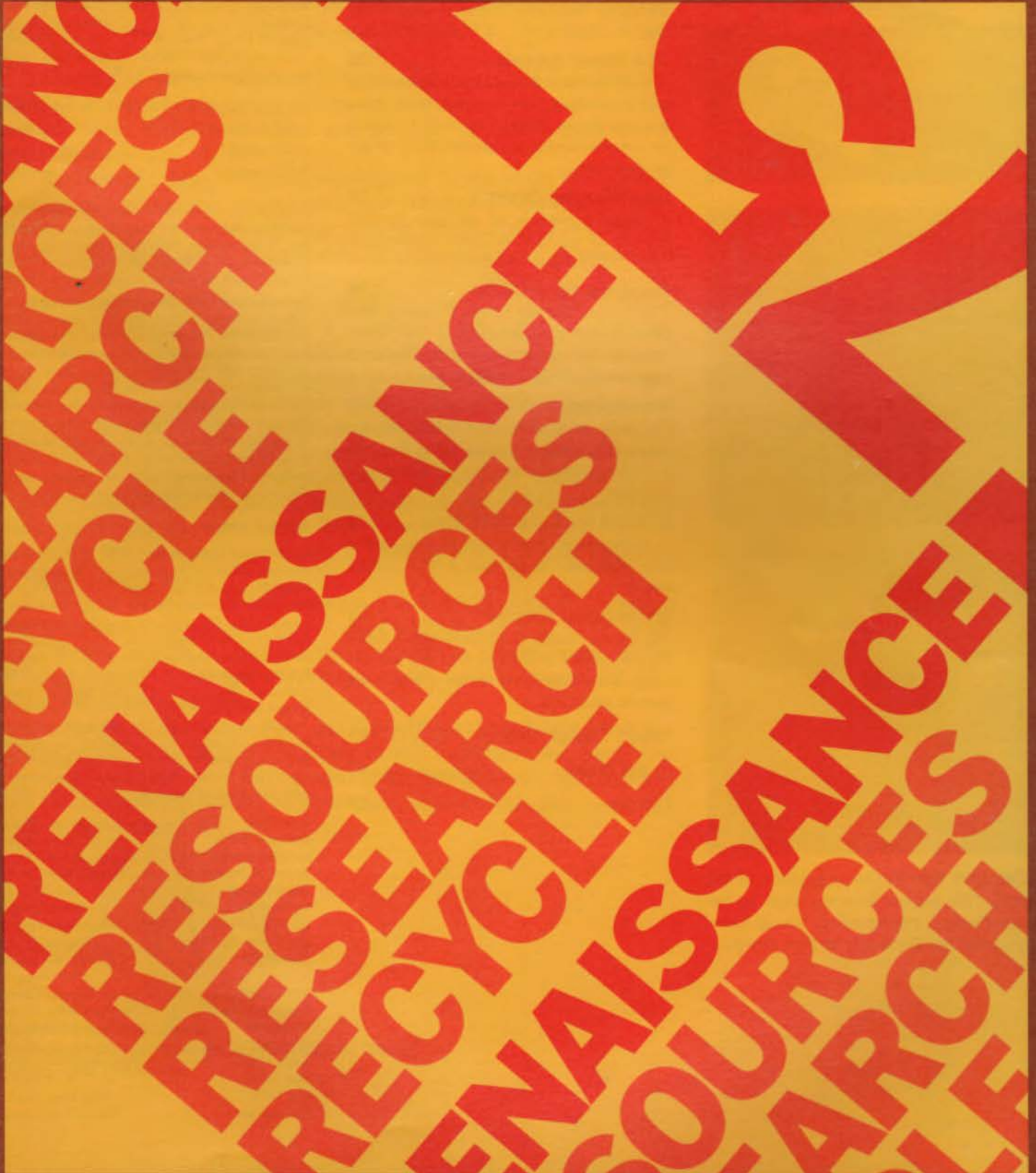


In this issue:  
Renaissance 75  
TSA Honor Awards  
Nine Winning Designs  
Elegance Sans Gliche  
A Home for Lone Star Steel  
Plus regular columns. See Contents.

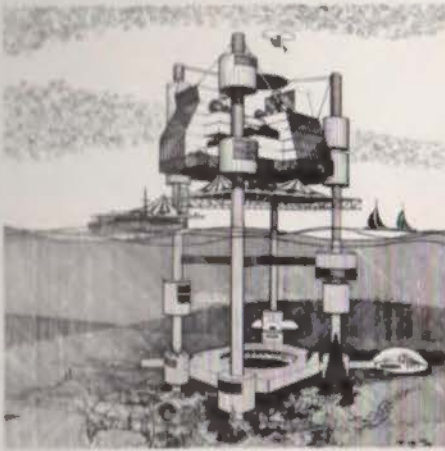
# Texas Architect

NUMBER 6 VOL. 25 NOV/DEC 1975





# Contents



**On the cover** An adaptation of the 1975 TSA Annual Meeting logo, by Image Design, Incorporated, Visual Communications Consultants, Fort Worth.

## Editorial ..... 3

### Renaissance 75 ..... 10

*Being: an appreciation of Leonardo da Vinci and his 15th century comrades, a look ahead to an "architectural renaissance" in the last quarter of the 20th century, and an in-depth survey of "resources, research, and recycling" in Texas.*

### TSA Honor Awards ..... 25

*A brief account of the accomplishments of ten individuals and organizations being honored by the Texas Society of Architects for contributions to the quality of life in our environment.*

### Nine Winning Designs ..... 33

*A pictorial preview of the nine projects selected as winners in Texas Architecture 1975, TSA's annual design awards program*

### Elegance Sans Cliche ..... 36

*The story behind the Edwin J. Thomas Performing Arts Hall in Akron — a "wow" building that makes going to the theater a real experience, as it ought to be.*

### The Rothko ..... 40

*The work of Mark Rothko lives on in this ecumenical house of worship which provides a unique atmosphere for religious experience.*

### A Home for Lone Star Steel .... 42

*A Dallas-based steel company gets itself a new corporate home, and a TSA design award.*

### Endangered Species ..... 45

*The Harris County Heritage Society is nearing publication of Volume One in a pioneer series of annotated inventories of Houston's historic structures.*

### Urban Design Games ..... 47

### In the News ..... 48

### Letters ..... 57

## Official Publication of The Texas Society of Architects

TSA is the official organization of the Texas Region of the American Institute of Architects.

Des Taylor ..... Editor-in-Chief  
Larry Paul Fuller ..... Managing Editor  
Ray Reece ..... Associate Editor  
John Lash ..... Advertising Director  
James D. Pfluger, AIA ..... Editorial Consultant

### Editorial Policy Committee

Jim Meyer, Chairman ..... Bobbi Fritz  
Marvin Boland ..... Jack Mitchell  
Jack Craycroft ..... Henry Ortega  
Peck Drennan ..... Jim Pfluger

*Texas Architect* is published six times yearly by the Texas Society of Architects, 800 Perry Brooks Building, 121 East 8th Street, Austin, Texas 78701. Subscription price is \$5.00 per year for addresses within the continental United States, excepting Hawaii and Alaska.

Editorial contributions, correspondence, and advertising material invited by the editor. Usually, no payment will be made for articles. Publisher gives permission for reproduction of all or part of editorial material herein, and requests publication credit be given *Texas Architect*, and the author of material when indicated. Publications which normally pay for editorial material are requested to give consideration to the author of reproduced byline feature material.

Appearances of names and pictures of products and services in either editorial or advertising does not constitute an endorsement of same by either the Texas Society of Architects or the American Institute of Architects.

### 1975 TSA Officers

David Braden, FAIA, Dallas ..... President  
Theodore Maffitt, Jr., Palestine ..... President-Elect  
Robert W. Chambers, Fort Worth ..... Vice-President  
Harry Golemon, FAIA, Houston ..... Vice-President  
Larry Hohlaus, San Antonio ..... Vice-President  
John Greer, College Station ..... Secretary  
Daryle Hohertz, Big Spring ..... Treasurer  
Tom Bullock, FAIA,  
Houston ..... AIA Regional Director  
Howard Barr, FAIA,  
Austin ..... AIA Regional Director  
Ben Brewer, Houston ..... Immediate Past President  
Des Taylor, Austin ..... Executive Director

### 1975 TSA Board of Directors

James Tittle ..... Abilene Chapter  
William J. Martin ..... Austin Chapter  
Richard Vrooman, FAIA ..... Brazos Chapter  
William H. Holland ..... Corpus Christi Chapter  
Jack Craycroft ..... Dallas Chapter  
William Thorpe, Jr. .... El Paso Chapter  
Lee Roy Hahnfeld ..... Fort Worth Chapter  
Alan Taniguchi, FAIA ..... Houston Chapter  
Gene Hobart ..... Lower Rio Grande  
Valley Chapter  
Bob Goyette ..... Lubbock Chapter  
George Rodgers ..... Northeast Texas Chapter  
Bill Parrish ..... San Antonio Chapter  
Milton Bell ..... Southeast Texas Chapter  
J. Ray Daniel ..... Texas Panhandle Chapter  
John Dudley ..... Waco Chapter  
Ken Tollin ..... West Texas Chapter  
James Rucker ..... Wichita Falls Chapter

# Rebirth of Reason

We have long prospered under an economy of cheap, abundant energy and material resources. For thirty years we have built rapidly, if not always well. Now the days of cheap energy and abundant resources are gone. Today's challenge is to design and build better using less, to live better consuming less.

The difficulties of shifting energy systems from oil and gas to coal, ethanol, nuclear, solar, wind, etc., will be great. The rewards to inventive architects will also be great.

If distributed energy per capita decreases significantly, we can envision a nation of small communities, stronger family ties, conservative politics and pleasures, reduced mobility, and practical applied-science educational systems.

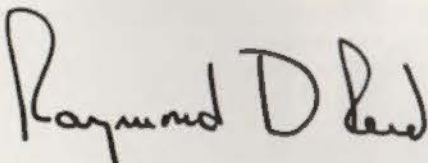
If distributed energy per capita significantly increases, we can envision a nation of high-density, limited-perimeter cities, sized and spaced to optimize regional resources and sophisticated transportation systems; extensive freedom of choice and mobility; liberal politics and pleasures and extensive opportunities for liberal and specialized education.

While our future lies somewhere between these two extremes, it is now clear that mounting pressures for a wiser use of available resources are stimulating new directions in architecture. Thus we stand on the forward edge of a post-industrial renaissance pointing toward an architecture based on the conservation of energy and recycling of materials. Residential densities will increase, encouraging the design of amenities (such as hike and bike trails) to make community life more enjoyable. Strategic buildings, neighborhoods and cities will be recycled, adapted to the scaled-down needs of the future. Wasteful buildings, neighborhoods and even cities will be abandoned and demolished to recover critical materials. We must make parks out of parking lots, and start designing cities for people again.

By way of setting a modest example, the Texas Society of Architects might do what it should have done before now: change its criteria for annual design awards to include the category of energy conservation. "Well-designed" buildings which continue to waste our precious fuels ought not to be rewarded.

The success of our renaissance, our "rebirth of reason," depends on the ability of the Texas architect to research and implement the many ways by which we can create a built environment that increases the quality of life while sustaining healthy economic and natural ecologies.

Now is the time.



**Raymond D. Reed, Dean  
College of Architecture and Environmental Design  
Texas A&M University**





# Waterproofing. If Neogard puts it down, it stands up.



You have our guarantee on it. When one of our licensed Neogard Applicators has the contract for your specific waterproofing system – you have the assurance that a quality application will be put down that satisfies your requirements and our specifications.

We can do it because we have 60 million square feet of experience in applying waterproofing systems – and because we use superior quality materials born of our own technology, which springs from our 47 years of formulating coating systems.

We are The Neogard Corporation, a company that specializes in waterproofing systems. Somewhere on one of our many projects scattered from Alaska to Caracas, Venezuela and from Boston to Agana, Guam, we have handled a project much like your own.

Whether it is a vehicular or pedestrian traffic-bearing system, buried membrane or roofing system you need, here is what you will get from us:

A waterproofing system that is seamless because it is fluid-applied. It is flexible – it stands up to inclement weather, temperature fluctuations, ultraviolet light attack, fire and chemicals. In addition to all these benefits it is attractive and some systems are non-skid, as well.

Our Neogard systems will protect your investment whether it is new construction or the renovation of your present facilities. Your cost of ownership and maintenance will be less, and the life of your property will be extended.

We guarantee our work. And now we would like to work for you. Please write for more information – or give us a call.



**THE NEOGARD CORPORATION**  
2732 Empire Central  
P.O. Box 35288 · Dallas, Texas 75235  
214/357-4305

**Visit us in Booth #37**



# Neuhaus + Taylor and PPG.





Century Center Building Five, Atlanta, Georgia  
Owner: Gray Properties, Atlanta, Georgia



101 Marietta Tower, Atlanta, Georgia  
Owner: Hicks and Associates, Atlanta, Georgia



# And the one that brought

PPG Solarban® 550-8 Twindow® insulating glass is the skin on all three of these buildings.

But they don't all have the same glass merely because they had the same architect.

The projects presented similar problems.

All the buildings were speculative.

And all are in the South (two in Atlanta, one in Tampa).

So they all had to have the kind of esthetics that would please the tenants and the kind of economies that would profit the owners. (Especially, economical air conditioning to handle the hot Southern summers.)

PPG Solarban 550-8 Twindow

insulating glass proved to be the perfect solution.

It gave the buildings a look the architect describes as "the epitome of esthetic expression of the times." And its reflectivity, shading coefficient, and thermal insulation deliver operating economies sure to become more and more valuable as energy becomes



Lincoln Center, Tampa, Florida  
Owner: Lincoln Properties, Tampa, Florida



# beautiful glass us together.

more expensive.

No matter what shape your next building is taking, there's probably a PPG high-performance glass that can make it shape up a little better.

And that one beautiful glass can bring us together, too.

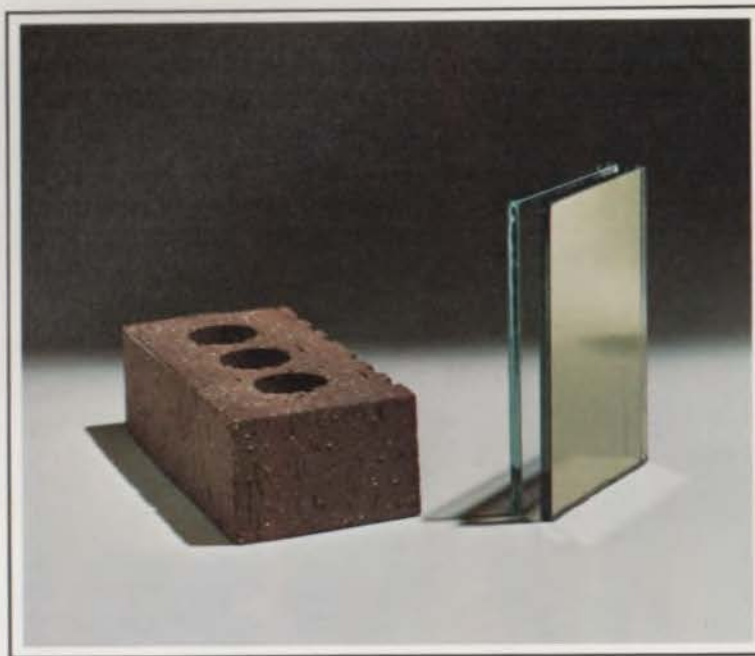
Find out more. Write for our book, "Architectural Glass Products," or refer

to Sweets Architectural File, Catalog Code 8.26 Pp. PPG Industries, Inc., One Gateway Center, Pittsburgh, Pa. 15222.

PPG: a Concern for the Future







## One of these building materials can save you \$848,735 in initial cost on your next building

### A Study of the Relative Economic Performance of Masonry versus Glass Office Buildings

#### Results of Brick versus Glass Buildings Study

New and exhaustive research by the Texas State Building Materials and Systems Testing Laboratory has established that office buildings with brick exterior walls not only save money but are much more energy conserving and provide greater return on investment than the same buildings with all-glass walls.

#### Summary of the Findings

Comparing a typical office building having 15 stories with exterior walls of 80% brick (20% window area) to an all-glass exterior building, the research determined:

**The brick building will out-perform the glass building as follows:**

- 1. The brick building saves 9% in initial construction cost. (In this study \$848,735)**
- 2. The brick building saves nearly 34% in cash equity required.**
- 3. The brick building reduces heating and air conditioning bills by 9.8%**
- 4. The brick building's annual operating costs are nearly 4% less. (\$29,436 savings the first year)**
- 5. The brick building's maximum rate of return on investment is 28% higher.**
- 6. The brick building's rental income is the same as the glass building.**

The report was approved by the research engineer representatives of nine Texas state universities. The results typically apply to office buildings of all sizes.

The complete TSBMSTL Report has been reprinted by the permission of the state agency and is available upon request. To obtain a copy, see your local Acme Brick representative, or write:

Acme Brick Company, P. O. Box 425, Fort Worth, Texas 76101.





# **How much money will be wasted on energy for your building this year?**

## **E CUBE can tell you.**

Could be, a lot of money you're paying for utilities is going out the window. Or down the drain. Or up in smoke. Who can say for sure? E CUBE can.

E CUBE is a three-part life cycle analysis that (1) computes the hour-by-hour energy requirements of your building for an entire year, (2) lets you build a computer model of the energy system and evaluate its performance by comparing the entire spectrum from all-electric to total energy systems, and (3) compares the total operating and capital costs of each system you study (takes

project life and equipment life into account, provides for irregular and replacement expenses and ranks the systems comparatively for life cycle costs).

In short, E CUBE is an energy saver for your building. So whether you're remodeling, upgrading and replacing old equipment, or simply want to check your building's energy efficiency, E CUBE can help you make the right decision. And that could help you save energy — and money.

For more information, contact the technical advisor of your local gas utility.

**A service of  
your Natural Gas  
Utility**





Famous "working" sketch by Leonardo da Vinci, the father of the Italian Renaissance, with handwritten notes.



# RENAISSANCE RESOURCES RESEARCH RECYCLE



By Ray Reece

It is no accident that the theme of this year's annual meeting of the Texas Society of Architects is "Renaissance 75: Resources, Research, Recycle." We who are concerned with the quality of the built environment have simply recognized the obvious: in the face of mounting pressures on our resources, we must commit ourselves to a rebirth of wisdom, spirit of inquiry and positive change in the way we pursue our professions and our lives.

The renaissance we thus confront bears distinct similarities to the famous historic Renaissance characterized by the life and work of Leonardo da Vinci in 15th century Italy. That Renaissance represented a quantum leap forward in the history of western civilization. It was the result of a dialectical interaction of social forces — demographic, economic, technological, political, aesthetic — boiling together in a single moment of sweeping change. As a rebirth of classical Greek and Roman rationalism, it put an end to the xenophobic superstition, rigidity, and cultural stagnation of the Middle Ages. By the time it ebbed in the 17th century, it had laid the

foundation for the Enlightenment and the Industrial Revolution of the 18th and 19th centuries. It had given us the blueprints for modern capitalism and political democracy as expressions of optimism, intellectual potency, and faith in the perfectability of the human race. Ultimately, its effects shone most clearly in the accomplishments of its artists, who were often its architects and its scientists as well.

Now, at the threshold of the 21st century, it is widely agreed that the cycle of technological brashness and exploitation of resources unleashed in the earlier period has peaked and begun to decline. It has left in its wake not only our democracies and our unexcelled standard of life, but a more dubious heritage of global population strains, damaged environment, crowded tottering cities, and a drift toward violence that could extinguish life on the planet. Predictably, these crises, which seem without end, have gnawed at the roots of our most valued institutions, including the family, and begun to sap our spirit and our will to persevere. That is why we need a Renaissance 75.



# RESOURCES...

## Gas-Oil Price Plan Rejected by Senate

WASHINGTON (AP) — The Senate rejected a House Energy Committee proposal to accept a contingency energy plan that would raise energy prices in exchange for a cut in federal income taxes.

The bill would allow the president to raise energy prices for a 10-year period. It would also allow the president to raise energy prices for a 10-year period.

At the end of the 10-year period, the price could be set at \$11.50 a barrel. The bill would also allow the president to raise energy prices for a 10-year period.

The bill would also allow the president to raise energy prices for a 10-year period.

## Big population gain seen for Austin area by 1990

HOUSTON (AP) — The population of the Austin area is expected to increase by 50 percent by 1990, according to a study by the Texas Department of Transportation.

## Gas Shortage Projected Economist Urges Relaxing Federal Controls

WASHINGTON (AP) — An economist has urged the federal government to relax its controls on the energy market to prevent a gas shortage by 1990.

The economist, James Callaghan, said that the federal government's current energy policy is "outdated and inefficient."

Callaghan said that the federal government should allow the market to determine energy prices.

## Energy crisis

### Continuing problems forecast by UT prof

By 1985 there will be an energy shortage in the United States that will make your hair curl. This was a prediction Tuesday of Dr. John J. McKetta, chemical engineering professor, University of Texas, addressing the Austin Rotary Club. Many warned Americans of the recent energy shortage. McKetta's prediction in the past has been accurate, and because he is one of the most knowledgeable energy subjects in the nation, his address is produced verbatim.

## Energy called shorter than believed

### Agency hits U.S. energy record

WASHINGTON (AP) — The United States has set a new record for energy consumption, according to a report of the International Energy Agency.

## Natural gas shortages loom; Senate nixes plan

WASHINGTON (AP) — The Senate rejected a House Energy Committee proposal to accept a contingency energy plan that would raise energy prices in exchange for a cut in federal income taxes.

## Economy versus environment battle continues

SANTA BARBARA, Calif. (AP) — The battle between the economy and the environment continues as the U.S. Geological Survey reports that natural gas reserves are 55% lower than estimates published by the Interior Department.

## Uranium supplier voids its Glen Rose contract

WASHINGTON (AP) — A uranium supplier has voided its contract with the U.S. Geological Survey for the Glen Rose uranium deposit.

## Scientist study reported great nuclear danger

WASHINGTON (AP) — A study by the U.S. Geological Survey has reported that the risk of a nuclear accident is "great."

## Licensing Board Hears Antinuclear Evidence

WASHINGTON (AP) — A licensing board has heard evidence that the U.S. Geological Survey's estimates of natural gas reserves are 55% lower than estimates published by the Interior Department.

## Nuclear danger reported great

WASHINGTON (AP) — A study by the U.S. Geological Survey has reported that the risk of a nuclear accident is "great."

Eighteen months ago, *Texas Architect* published an analysis of the short-term/long-term impact of the energy crisis on the lives of the people of Texas in general and of architects and allied professionals in particular. The picture we were forced to paint, using the hardest data we could find, was not a pretty one — especially in terms of waning supplies of fossil fuels, largely oil and natural gas, which provided then and still provide 95% of our energy base. This situation has not improved, despite the appearance of relief due to the lifting of the Arab oil embargo. There has been a modicum of progress, as we shall observe later, in the spheres of research and potential for conservation, but the resource picture itself remains grim.

Witness, for example, the views of Dr. Peter R. Rose, chief of the Oil and Gas Resources Branch of the U.S. Geological Survey (USGS) in Denver, who said last month that "the urgency of the energy crisis is far worse than the people have been led to believe." One of the many

reasons for this, he said, is that the "Interior Department is committed to (unrealistically) high figures" pertaining to known and estimated reserves of domestic oil and gas. Specifically, the USGS has determined that offshore reserves of petroleum and gas are 55% lower than estimates published by the Interior Department in its report on behalf of former President Nixon's "Project Independence." Furthermore, said Rose, even if the USGS projections are a few percentage points in error: "Whatever amount of oil and gas is still to be found, all it is doing is buying us time to develop alternative sources of energy. And we better get on with it . . . our time is running out."

### Ominous Voices

Other expert voices are still more ominous. Dr. John J. McKetta, a professor of chemical engineering at U.T. Austin, said in a recent speech that "there will be an energy shortage in 1985 that will make your hair curl," bringing with it a "severe recession." Up in New England, at the Energy Laboratory of the Massachusetts

Institute of Technology, an economist named Paul McAvoy has completed a half-million dollar computer study which predicts a 30% shortage of natural gas by 1980. And just last month, at a seminar in Houston, the director of the U.S. Geological Survey reported that natural gas curtailments for the 12-month period ending next March are expected to reach 2.9 trillion cubic feet, which "is the thermal equivalent of 500 million barrels of oil."

### Texas Crude, Etc.

This national unpleasantness is sharply reflected in the August edition of "Texas Energy Report," a regular publication of the Governor's Division of Planning Coordination. Except for a modest increase in the yield of lignite coal, mostly through stripmining, Texas production of fossil fuels remains in a decline that started in 1971, considered by many to have been the climax-peak in Texas' glorious career as one of the world's petroleum magnates. Crude oil production fell 3.3% from last year, while

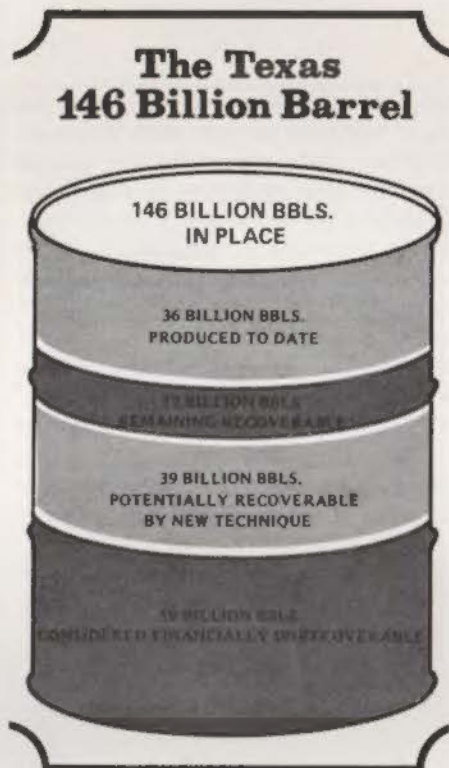


natural gas plunged 11.6% — despite a net increase in the number of new oil and gas wells completed.

A discomfiting array of distress signals has also arisen in the field of nuclear power, long touted as the energy-savior of our society. One of the most remarkable is an announcement by the Westinghouse Corporation that it has cancelled a contract with Dallas Power and Light for the delivery of uranium ore to fuel the utility's Comanche Peak nuclear plant in Glen Rose, which is supposed to be operational in 1980. At the time the contract was negotiated, Westinghouse quoted a price of \$8 to \$9 a pound for the fuel. Market prices for the same ore, projected to 1980, now range as high as \$30 a pound, and there is no reason to think they won't go higher, as it has long been known that the nation's reserves of high-yield uranium are even more limited than other fossil fuels. Dallas Power and Light is further confronted with a cost overrun of \$210 million on its Glen Rose plant — due to inflation and "government regulations" — an increase of 27% over the original \$777 million figure. Finally, at the national level, a \$3 million study by a panel of blue-ribbon scientists has concluded that (a) the primary safety systems in most of the country's light-water reactors cannot be proven workable; and (b) in the event of a major nuclear accident, like a core meltdown, as many as 10,000 to 20,000 people would die from cancer induced by radiation. This is 60 times the number of deaths claimed in earlier government statements.

### Challenge Unfaced

Faced with such relentless difficulties in our resource inventories, we turn again to the challenge of conservation, and here, too, we are scarcely making the grade. According to a report by the International Energy Agency, the U.S. has compiled one of the worst records for energy conservation of all the world's industrialized countries. Of the 14 nations surveyed, we ranked fourth from the bottom. In Texas, energy consumption by state government rose 11.6% over 1974, practically eroding the savings accomplished a year earlier, and state motorists consumed 515.7 million gallons of gasoline, up from 473.6 million gallons for the prior 12-month period. This is not surprising in view of a state-funded survey of 425 Houston-area



households regarding their attitudes toward the energy crisis. Although the survey was conducted at the height of the Arab embargo, with fuel prices climbing astronomically and gas stations closing on weekends, fewer than half the Texans interviewed (45%) believed the world was finally starting to run out of fuel.

These and other statistics help explain why the 64th Texas Legislature, which some had hoped would "turn the state around," energy-wise, in fact defeated far more bills of an energy-positive nature than it passed. Among the casualties were: majority-consent unitization of oilfields (a prerequisite to efficient secondary recovery of gas and petroleum remaining in "exhausted" deposits); state ownership of a proposed off-shore oil terminal; a timed phase-out of natural gas as a boiler fuel for electric power plants; an energy development fund (including alternative sources) to be administered by the Governor's Energy Advisory Council. The complete list of failures is at least three times as long, in contrast with the handful of bills which passed. They include: a two-year extension of the 55-mph speed limit; the absorption of most state energy-planning functions by the Governor's Council; a public utilities commission; a very modest

statute regulating surface mining of coal and uranium; a bill "to hasten the orderly development of Texas geothermal resources"; exemption of solar energy devices and applications from state sales and franchise taxes.

This paucity of corrective energy legislation is particularly foreboding in the light of recent projections concerning Texas growth rates. By 1990, for example, Austin's population is due to increase 43%; Houston will grow by 42%; and Bryan/College Station will explode by 75% over its present number of inhabitants, autos, factories, housing units, etc. Other metropolitan areas can expect similar increases, along with a continuation of energy-gobbling "suburban sprawl." The latter trend was spotlighted in a recent study by the North Central Texas Council of Governments which showed that residential construction in the northeastern suburbs of Dallas grew to 44% of the total for Dallas County, while construction within the city limits fell to 24%.

### Bright Spots

Nonetheless, amidst the resource disappointments of the last year and a half, certain encouraging bright spots have appeared. One is a project by the State Building Commission, on a mandate from the legislature, to establish a schedule of energy-consumption standards for Texas buildings of all types. Headed by a team which includes state engineer William Bowen and architect Norm Kinney, the project was launched two months ago with the mailing of a detailed questionnaire to the membership of the Texas Society of Architects. The ultimate goal of the study is twofold: (1) to delineate a system of "energy-budgeting," based on performance standards, for all new state-funded construction; (2) to produce a body of energy-conservation guidelines for distribution to architects, contractors, developers, municipal officials, etc. (If rigorously executed, there is no reason this project shouldn't result in net energy savings on a par with those suggested by the AIA: 30% for existing buildings, 60% for new ones. Indeed, during the state's "conservation offensive" of mid-1973 to mid-1974, a number of agencies approached the 30% level by doing little more than turning down thermostats and switching off lights.)

The federal government, largely



through its General Services Administration (GSA), is moving in a similar direction. It has already published a two-volume *Energy Conservation Guidelines for New and Existing Buildings* — based in part on data compiled from experimental federal buildings like the one in Dover, New Hampshire — which appears to be a must for every architect and engineer in the country.<sup>1</sup> As regards its own structures, the GSA has established an overall “energy budget” of 55,000 Btu’s per square foot per year for new buildings, and 75,000 Btu’s for existing buildings. According to Bob Miller, Director of Construction Management for GSA’s Region 7, the agency has taken several steps to apply its new standards. One is a comprehensive energy inventory of all existing federal structures in the five-state area comprising Region 7’s jurisdiction. Some of these buildings, including the huge Federal Building in Fort Worth, have already been “retrofitted” with energy-saving devices like solar film to deflect the sun from exposed windows. Meanwhile, in Oklahoma City, where Region 7 is erecting its newest and perhaps its finest installation, conservation measures range from 100% task lighting and multizone heating and cooling (with heating coils eliminated altogether, in lieu of heat from lights and human bodies) to an exterior design which calls for three of the four walls to be faced with entirely different materials (concrete, granite, and tinted insulating glass) according to their solar orientation. Perhaps most important, the budget for the new Federal Building was established not on the basis of initial costs but of life-cycle operating costs, so as to justify the necessarily greater expenses incurred by energy-efficient design.

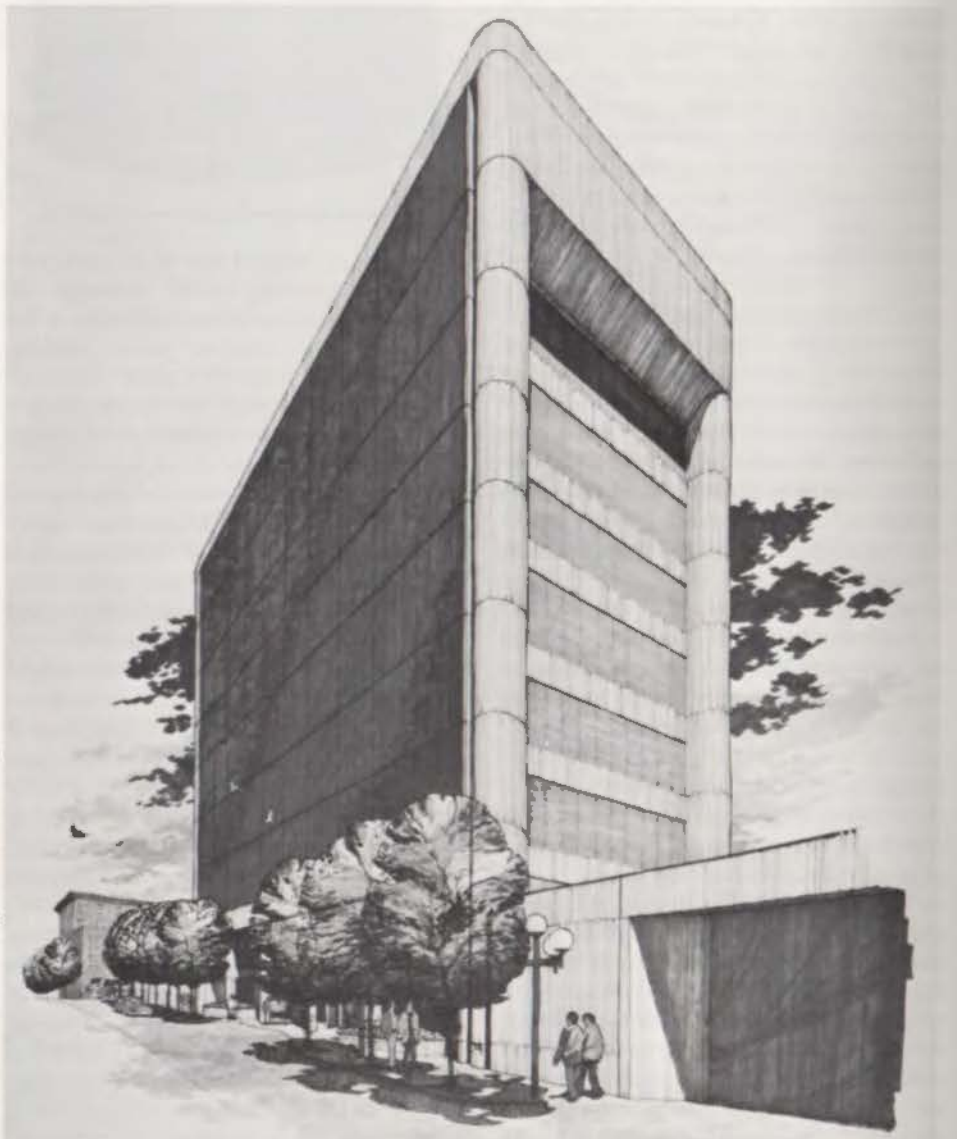
### Solar Initiative

But the boldest stroke of the GSA, representing both a challenge and an example to private enterprise in the matter of addressing the energy crisis, is a new U.S. Border Patrol headquarters in Marfa, Texas, to be heated and cooled entirely through solar power. The architect is Joe

Federico, of Dallas, who says that his client, besides wanting to show that solar power is a viable alternative now, not ten years from now, made its solar decision on the basis of the remoteness of the site from major electrical generating facilities (Marfa, with a population of 3000, is 6000 feet above sea level and 300 miles from El Paso, the nearest major urban area). The site is ideal for a solar installation, falling as it does within a “Langley” which provides near-optimum solar conditions.<sup>2</sup> It is also ideal for wind-power, which the GSA considered and then abandoned due to the exorbitant price of the custom hard-

ware required. The solar equipment is expensive too — it will increase costs \$186,000 — but less so because the hardware is “off-the-shelf.” And, since this project, like the building in Oklahoma City, was budgeted on a life-cycle basis, the higher first-costs are not at all what they seem in absolute terms. At any rate, says architect Federico, the more clients who begin to opt for solar alternatives, the greater the impetus toward mass production of solar components, and the lower

<sup>2</sup>A “Langley” is a topographical zone measured in terms of the average annual solar radiation which it receives.

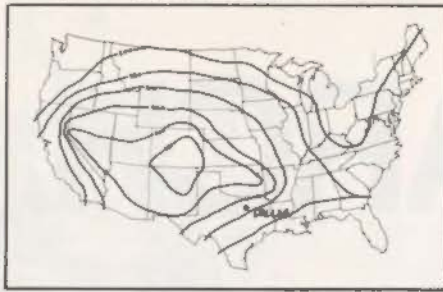


*New Federal Building, Oklahoma City.*

<sup>1</sup>This document is available for \$2 from any GSA Business Service Center.

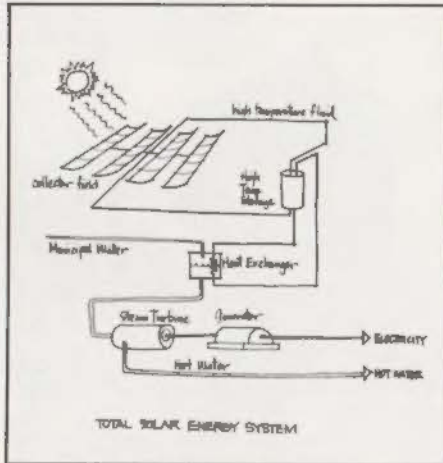


"Langleys" (optimum solar conditions)



the cost. That too, it seems, was a factor in the GSA's decision.

There is an equally exciting solar project underway in Dallas which will also require significant government involvement to assure its completion. It is Northlake Community College, originally designed, before the Arab embargo, to utilize a conventional power arrangement, now being seriously studied for conversion to a total solar energy system. Project architect Joe Guthrie of Envirodynamics, Inc., in Dallas, drew the initial plans for the college, which will be the sixth of seven campuses projected for the Dallas County Community College District (DCCCD),



and it was Guthrie who suggested the conversion to solar. That was about a year ago. Since then, working with a \$10,000 grant from the Energy Research and Development Administration (ERDA), Guthrie and his colleagues have amassed enough data to prove that their vision of a total solar campus — not just heating and cooling but electrical power generation as well — can be realized with existing technology. Their project has won the blessing of Dallas Congressman Dale Milford, among others, and last month they received a second ERDA grant of \$93,000, plus a supplement of \$5,000 from DCCCD, to finance "first-cut" design and engineering drawings requisite to installing the revolutionary system itself.

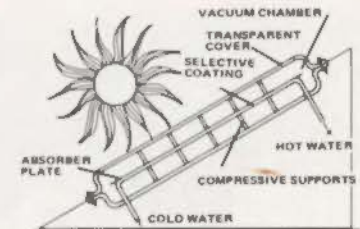
If all goes well, including the attraction of substantial additional funding, Northlake Community College will become both a showcase of the future — the first of its kind in the world — and a unique



educational facility. "We need people who can design and maintain systems like these," says Guthrie, and toward that end he has taken the unusual step of helping to outline a comprehensive "solar curriculum," to be offered at the college, which presently includes no less than 22 solar-connected courses.

## Brave New Company

This nation's critical need for alternative energy systems and equipment which can be used *now* has spawned at least one new Texas manufacturing company — SOLARSYSTEMS, Inc., of Tyler. The company was formed two years ago by architect Jack Decker and engineer Jim Estes. Their basic product is a four by eight-foot flat-plate solar collector whose unique design feature is a vacuum chamber sealed round the absorber plate, thus providing more efficient operation.



The collector is actually a module which can be used singly, to fuel a hot-water heater, or in various combinations to perform tasks ranging from heating a swimming pool to heating and cooling an office building. According to the company's brochure, "the SOLARVAK Module is of simple design . . . easily mass produced by unskilled labor or automation." This means lower prices, and indeed, the entrepreneurs have already had to revise their price sheet *downward!* Their address is 1802 Dennis Drive, Tyler, Texas, 75701.



# RESEARCH...

During the last year and a half, the most dramatic changes in Texas' response to the crises besetting us have occurred in research, the majority of which is being conducted either by state government, indirectly, or by major universities. The lion's share of state-funded work is administered by the Governor's Energy Advisory Council (GEAC), which received a biennial appropriation of \$2 million from the 64th Legislature, as well as the status of an independent agency no longer tied to the Governor's apron strings. Of the total appropriation, according to GEAC staffer Larry Veselka, \$385,000 has been earmarked for the opening of a state energy-liaison office in Washington. At least some of the remaining dollars will likely be spent to continue a series of more or less *ad hoc* studies and experiments initiated by GEAC over a year ago to provide the governor with a set of criteria on which to base energy recommendations to the legislature. About 40 of these projects have been completed in the form of reports, a few of whose titles are: "Sociological Dimensions of the Energy Crisis" (43 pp); "Energy Conservation" (105 pp); "Potential Use of Geothermal Energy . . ." (63 pp); "Potential for Wind Generated Power in Texas" (159 pp); "U.S. Energy Development: Four Scenarios" (136 pp); "Potential of Solar Energy for Texas" (38 pp).<sup>3</sup>

## State Laboratory

Another modest but potentially effective research endeavor of state government is the Texas Building Materials and Systems Testing Laboratory, operated by the Housing Division of the Texas Department of Community Affairs. It is actually not a laboratory at all but an office through which research projects are channeled to appropriate institutions — mainly the technological components of nine Texas universities which have agreed to participate in the Laboratory's Technical Testing and Evaluation Council. The stated objectives of the Laboratory in-

<sup>3</sup>A complete list of these reports should be available from the Governor's Energy Advisory Council, Office of the Lt. Governor, Capitol Station, Austin, Texas 78711.



*Hypothetical buildings used in study of brick versus glass.*

clude: (1) promotion of technological innovations in construction; (2) competent, objective testing and evaluation of building materials and systems; (3) improvement of state and local building codes.

Perhaps the most ambitious of the Laboratory's projects to date is a 37-page evaluation of the "Relative Thermal and Economic Performance of Masonry and Glass Building Enclosures." This study was commissioned and paid for by Acme Brick Company, administered by the Laboratory, and conducted by an interdisciplinary team of professors from the University of Texas at Austin. The Laboratory has also compiled a "Consumer's Guide to Home Insulation," several studies for the Texas Parks and Wildlife Department, and a report evaluating a certain brand of "pinstripe breakable fireproof glass" to be released soon. Otherwise, according to interim director Mary Ann Bernard, the Laboratory hasn't been terribly active, largely because it hasn't been able to afford a fulltime director to attend to the business of signing up clients and advising people in the fields on which its work impinges — particularly the construction industry and building standards sections of local and county government. Now that the Laboratory has become better heeled, due in part to the contracts it has been able to execute, it is seeking candidates to fill the director's position.

## Texas A&M

Among the four or five major universities which have gathered new steam in

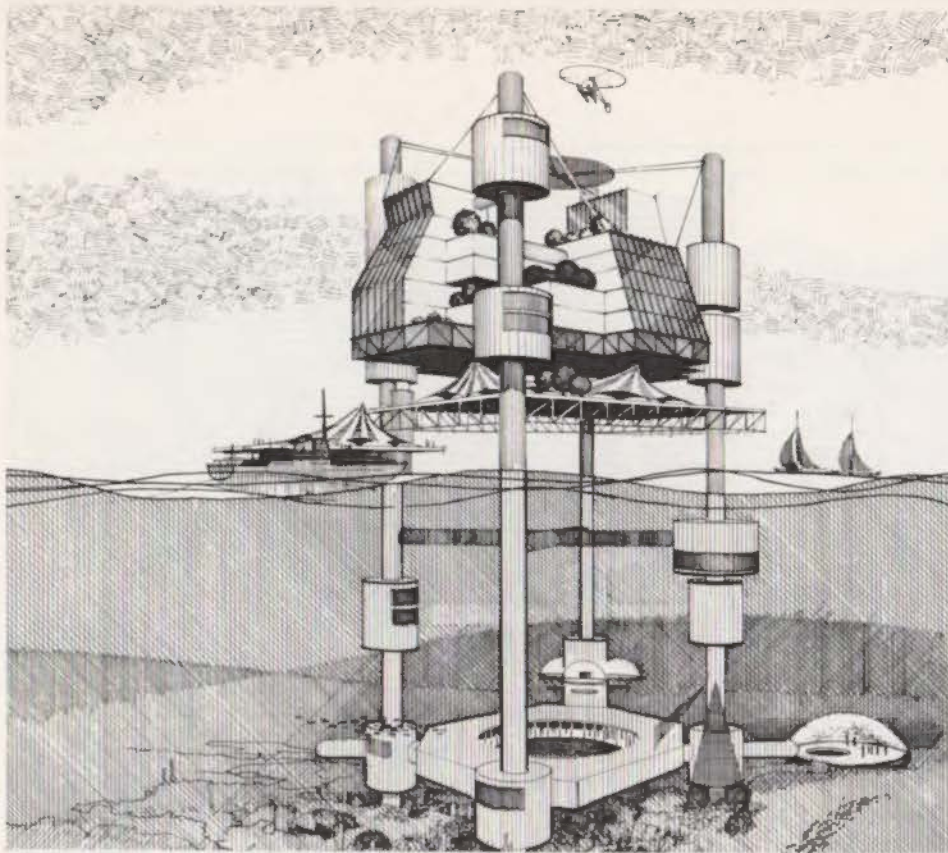
architectural research, Texas A&M ranks near the top, at least in terms of number and diversity of grants. Dean Raymond Reed, himself an active researcher, reports that TAMU's College of Architecture and Environmental Design currently houses \$108,000 of funded research and \$60,000 of "continuing education activities," with more proposals pending. Reed is quite explicit about the bias of these studies: "The primary research capabilities of this college are being directed toward the conservation of energy in architectural and urban design" — with a certain collateral focus on the "health facilities fields."

One of Reed's own inquiries, part of the GEAC series mentioned above, concerned itself with the "Impact of and Potential for Energy Conservation in Residential and Commercial Buildings in Texas." He and professor Albert Pedula will extend this work in a new project which they have undertaken: "Conservation of Energy in Architecture and Urban Design." Phase One of the study is "to assist the State Building Commission in preparing energy performance codes for institutional and commercial buildings" (again mentioned above).

Here is a brief survey of some of the other of TAMU's dozen-plus research projects.

—"Ocean Experimental City," by assistant professor Carolyn Dry: "to determine the feasibility for the construction of





"Ocean Experimental City,"

human environments in the coastal and maritime zones of Texas." An adjunct to this investigation is a tentative proposal for "an experimental recreational city prototype" to be constructed partly from "abandoned oil rigs" (see drawing). Along with Wolf Hilbertz, of U.T. Austin, Ms. Dry is also conducting research into the fascinating potentials of "bio-architecture," wherein one literally "grows buildings" through organic processes like barnacle and coral formations in the ocean.

—"Identification and Classification of the Primary Community in Several Typical Urban Systems," by Richard G. Moore: "to investigate the potential for classifying communities in terms of their energy-use characteristics."

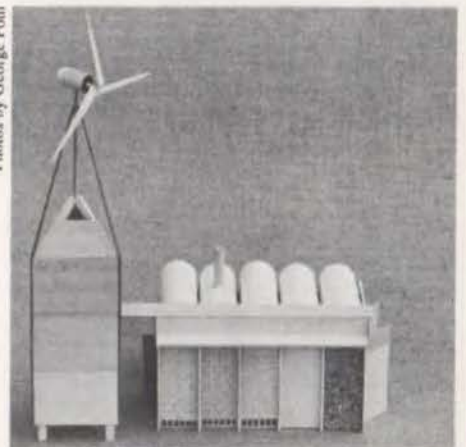
—"Low Cost Solar Collector," by Walter H. Patterson: "to demonstrate the use of fiber glass in the construction of a low-cost collector."

—"Radiant Energy Transfer Between Buildings and Environment," by W. Weston Harper: "to establish techniques whereby the architect can minimize incoming solar gain and maximize outgoing long wave radiation, thus reducing air-conditioning loads."

Other work in progress at TAMU includes studies of highway impact on Texas wildlife; of the "energetics" of commonly used building materials; of "secondary and higher order impacts of fuel conservation measures" on things like "family consumption patterns" and regional economic structures.

One of the most provocative research efforts at the University of Texas at Austin is being pursued by assistant professors Pliny and Daria Fisk, who operate the internationally recognized Laboratory for Maximum Potential Building Systems (featured in the May/June 1974 *Texas Architect*). On the basis of an expected \$60,000 grant from ERDA, the Fisks and their students are proceeding with construction of a "basic life-support systems" demonstration pavillion to be "pre-fabricated" in Austin and assembled as a Bicentennial exhibit in May, 1976, at the Franklin Institute in Boston. The pavillion will comprise a "basic life-support unit, providing for shelter, food growing and preparation, water and waste needs, etc. . . . to be supplied through natural, non-polluting sources of energy," including solar collectors and heat-retaining walls, a two-kilowatt wind-generator, methane gas plant, aqua-culture tank (for growing fish), and low-water disseminator — all integrated into one symbiotic system.

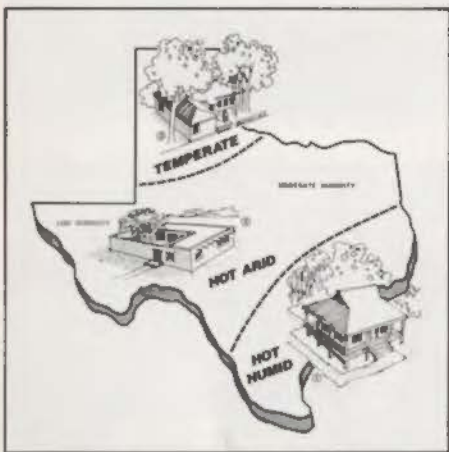
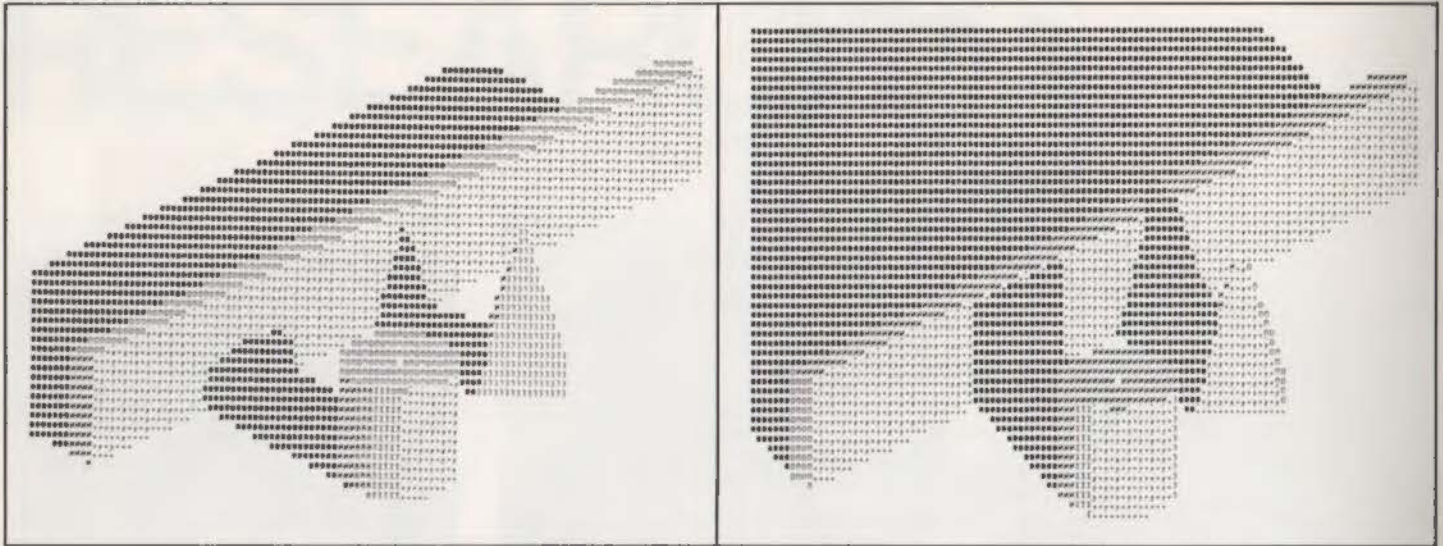
Because the Fisks want to demonstrate the accessibility of such technologies to "ordinary people," the pavillion will also function as an information center. Films, slides, catalogs, and "how-to" manuals will be on hand, with an emphasis on "relatively small-scale, low-cost, technically direct and understandable systems and materials." Following a three-month run at the Franklin Institute, the pavillion will be returned and reassembled as a public exhibit in Austin.



Photos by George Pohl

Front and rear view of "Energy Independence 1976", a "basic life-support system" being constructed at UT/Austin for exhibit at the Franklin Institute in Boston. Rear view (bottom) shows wall panels made from three different materials, including a heat-storage panel to be wrested from recycled cans filled with water and sealed.





### Thermal Studies

Francisco Arumi, a physicist who teaches in the UT/Austin School of Architecture, is also active in research (see his article on computer-aided design in the May/June 1974 *TA*). He has just completed a second project for the Building Inspection Department of the City of Austin entitled "Thermal Performance of Walls" — part of a larger "Study To Determine Plausible Energy Performance Guidelines for Commercial Buildings." To accomplish this study, Arumi fed a complex array of data on 9-year weather curves, wall-types, and internal activity (heat-producing) factors into a computer. What he sought, and got, was "the range of yearly energy cost to heat and cool internal spaces" in Austin, Texas, depending on wall-type, volume of enclosed space, and nature and degree of internal activity. The value of such data for energy conservation is obvious, with applications ranging from the correct sizing of mechanical systems to revisions in building codes. Arumi and his computers are still hard at work, of course. He is now conducting "a study of the effect of reflective glass buildings on other structures in the area." This study, like the one just described (which found that insulation is not always a good thing), will have some surprises.

### Socio-architecture

Increasingly, "architectural research" is not only technical and aesthetic in nature, but social, political, economic, and geographic (that's one of the differences between architecture and most branches of engineering). So it is that much of the recent work of John Gallery, UT/Austin's associate dean of architecture, falls more into the latter categories than the former. He and Terry Kahn of UT's Planning

Department have just completed the first phase of an investigation into the dynamics of planning and building large-scale residential subdivisions, including Planned Unit Developments (PUD's). Anticipating an increase in county zoning and land-use laws in Texas, Gallery wants to provide county officials with a proven system for arriving at zoning decisions which take the necessary complexities into account: ecological factors, methods of private versus public development, capital flow considerations, taxation, etc. So far, only the Austin/Travis County area has been analyzed, but Gallery hopes eventually to develop "policy prototypes" for counties in every major climatic zone in Texas.

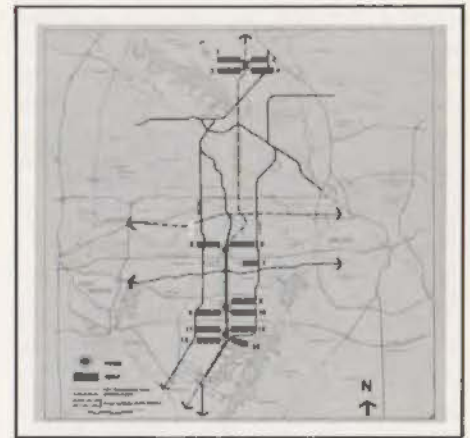
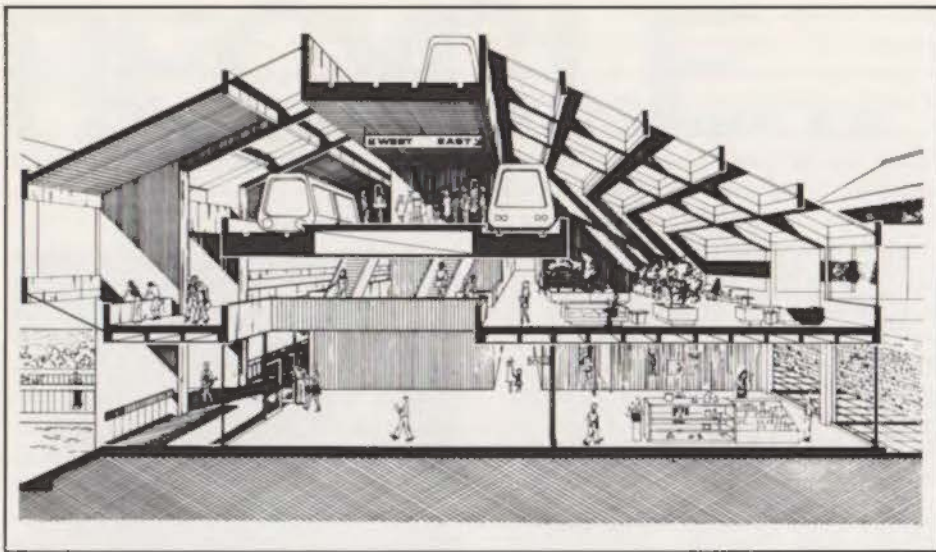
Gallery has also completed a pair of studies in San Antonio, one on the recharge zone of the Edwards Aquifer, another on the pros and cons of a possible merger of functions between the Bexar County government and the San Antonio City government. Specifically, how many of their respective functions should they merge (if any), and where and how should they build a new administration complex? This study was commissioned, curiously enough, by the Chamber of Commerce, which says it wants to promote "efficiency in government."

### UT/Arlington

Assuming that the architect of the future will have to work closely with people from other disciplines — whether in research or in straightforward design — there is evidently much to be admired in the organizational structure and operating procedures of the School of Architecture and Environmental Design (SAED) at the University of Texas at Arlington. Instead of the traditional one-professor/one-

ABOVE: Arumi's Magic DEROB Machine (two of a series of five "sketches" drawn by a computer to trace the shadow-patterns of three objects—a wall, a cylinder, and a pyramid—as the day progresses. The "viewer" is facing east, and the "sketches" correspond to shadows cast on January 21 at latitude 31 N at 3 p.m. and 5 p.m. Not shown: 8 a.m., 10 a.m., 12 noon.) From a paper entitled "Computer Aided Design in Buildings" by Francisco Arumi. BELOW: Sketch accompanying a digest of Raymond Reed's study of energy conservation in Texas for the Governor's Energy Advisory Council (GEAC). Reprinted from *Texas Energy*, Feb., 1975.



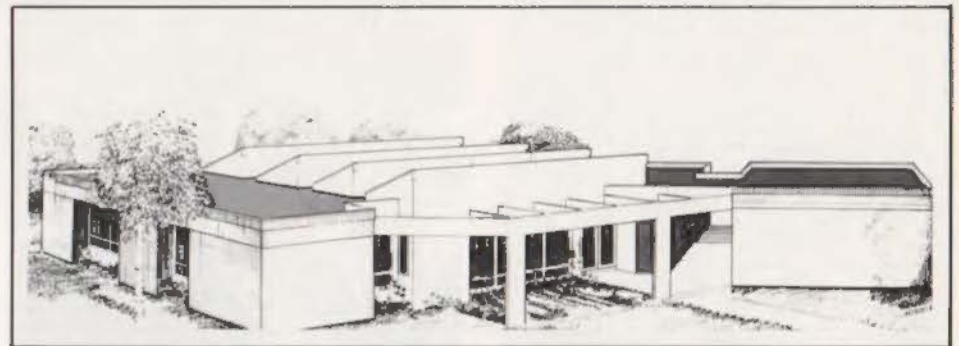


department/one-grant approach to research projects, most of the school's funded investigations seem to be carried out by multidisciplinary teams of faculty and students working under the aegis of one of SAED's three "research centers": the Planning Research and Design Center, the Construction Research Center, and the Center for Energy Policy Studies.

According to SAED Dean Hal Box, FAIA, the architecture faculty who make the centers work have attracted, from 1973 to the present, "\$950,272 in research and public service grants." One of these projects, sponsored by the Urban Mass Transportation Administration (UMTA), Department of Transportation, is nothing less than a mass-transit master plan for the Dallas-Fort Worth metroplex entitled "Linear City: Rapid Transit as a Determinant of Urban Form." Dean Box himself was the grant principal, while Michael A. Shelton and John M. Luby were project directors. The theory behind the study, now in the form of a 50-page booklet, is that the best way for the metroplex to avoid gargantuan "suburban" sprawl by 1990, with a hopeless dependence on the automobile, is to establish a linear network of rapid mass transit facilities which would constitute the spine and most of the vertebrae for an orderly pattern of residential and commercial growth.

#### "Spurs" and Open Space

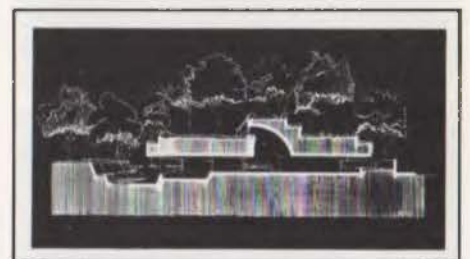
Medium to high density housing would be clustered in "spurs" along the major axis of the transit system, with at least a half-mile of open space between each one. The "spurs" themselves, a half-mile in width and two miles in length, would bear a maximum population of 40,000, giving the metroplex a 1990 population density of 5000 people per square mile, counting the



open space, which is lower than the present gross density of 6000 ppm in Los Angeles. Transportation within the "spurs" would be accomplished through a slower system of Personal Rapid Transit (PRT) and pedestrian walkways, reducing auto travel, congestion, and pollution to a manageable fraction of what it is today.

Another major research thrust involving SAED faculty and students, as well as people from engineering and business administration, is construction of a residence called "Discovery House '76," to be heated and cooled by solar energy. "Anyone can put solar heat and air conditioning on his home," said Dr. Gerald Lowery, project manager, "but it must be cost-effective. We hope, with new materials and construction techniques, to achieve about a 25% reduction in construction costs and have a system that will meet 65-75% of the home's energy requirements." Numerous private companies, including Acme Brick and National Gypsum, are participating in the project.

Finally, U.T. Arlington's Center for Energy Policy Studies, under the direction of Dr. Frank Moreland, recently conducted a national conference on earth-covered structures, funded by the National Science Foundation, which proved



ABOVE LEFT: Sketch of passenger stop for rapid-transit system in "Linear City" proposal by UT/Arlington, ABOVE RIGHT: Residential "spurs" along transit line. MIDDLE: Sketch and model of "Discovery House '76", to be solar-heated and cooled. BELOW: Underground structure as conceived by UT/Arlington's Frank Moreland.



so successful that a journal was established and a second conference planned for next year. Based on research presented at the conference, Dr. Moreland points to a score of persuasive rationale for pursuing the earth-covered structure as a major building type. Near the top of the list, of course, is fuel conservation: in North Central Texas, the temperature of the earth at a depth of nine feet varies from 63°F to 68°F throughout the year, while outside air temperature varies from 18°F to 105°F. The implications are clear.

#### University of Houston

Like U.T. Arlington, the College of Architecture at the University of Houston, under the deanship of William Jenkins, FAIA, has embarked upon a spirited research program emphasizing multidisciplinary groups of faculty and students. The work is monitored by a Research Unit, whose newly hired chairman Michel Bezman is investigating "practical means of applying solar energy to the air-conditioning of institutional and commercial buildings." This project is supported by the University's Solar Energy Laboratory, directed by Dr. A. F. Hildebrandt, who, with architectural assistance from Dean Jenkins and Dr. J. Colaco, is conducting a massive "Feasibility Study of a Solar Thermal

Power System Based Upon Optical Transmission," which presumably means the generation of electrical power through intense concentrations of sunlight — a breakthrough devoutly to be wished.

Last spring and summer, another multidisciplinary team performed a kind of "renovation analysis" of Houston's dilapidated Incarnate Word Academy for girls. The question was: could and should the Catholic school be saved, and if so, how? Led by architecture teacher Shafik Rifaat, the team was composed of students and faculty from the College of Architecture, the College of Education, and the Department of Social Work. They swarmed on their subject like bees on a bear, distributing questionnaires to parents and students, interviewing teachers, measuring classrooms and diagnosing the structural and mechanical health of the building itself. Their verdict was that the school should be saved.

Other projects at the University of Houston include "An Experimental Learning Package for Participants in the Home-building Industry with Regard to

Energy Conservation," by Ranjit Banerji; a study of the interlock between ecosystems, building systems, and technology, by A. McNab; and a proposal for "passive" (non-mechanical) energy conservation measures applicable to housing, by G. Way.

#### Rice University

The locus of research excitement at Rice University's School of Architecture, headed by David A. Crane, FAIA, is the two-year-old Rice Center for Community Design and Research. According to an article in the *Rice University Review*, co-authored by Crane and Donald L. Williams, Executive Director of the Rice Center: "The Center's relation to the Rice School of Architecture is somewhat analogous to the teaching hospital's relationship with a medical school. The Center offers the student the opportunity to work in an applied-research environment on real projects for paying clients."

An example of the Center's multidisciplinary *modus vivendi* is a "Texas Gulf Coast Program which applies the knowledge of natural sciences to the management of potential community-development impacts." Among a raft of other studies (totaling \$650,000 in commissions, according to Crane) is an attempt by the Center's "urban-design, law, economics, and community-development staffs . . . to determine the results of an attempt to defray the capital costs of (mass) transit systems through capturing increasing land values at transit stops. Houston and three other American cities are being used as demonstration areas."

The results are impressive: "Thus far, the Center has documented that Houston's local share (25%) of a regional rapid-transit system could be entirely supported by a conservative application of a value-capture policy." The project is funded by UMTA, whose deputy administrator John E. Hirten said: "The Rice Center work for the Department of Transportation is a landmark study in that field and will, I'm sure, have a significant impact on future public transportation financing."



TOP LEFT: Houston's Incarnate Word Academy, with model of proposed alterations. BOTTOM LEFT: Michel Bezman, chairman of the architectural Research Unit at University of Houston.



# RECYCLE...



Edward S. Rutsch



Union Terminal in Dallas



Technology is not enough. If we are to have a renaissance (whether in '75, or '85, or '95) which helps conduct us into an epoch of peace, stability, and sane deployment of resources, then we must avoid an error which our predecessors have made again and again. We must avoid the delusion that technology alone will deliver us from the sins of our past.

Along with technology we must have respect — for ourselves, for the long-term needs of our children, for the fragile provisions of nature, and for the value of those artifacts of the built environment which we have fashioned from the miniscule supply of resources at our disposal. This means a life-style based no longer on consumption but on conservation, and it means an architecture as turned-on by the old as by the new. It means recycling: reusing buildings, elevator cabs, trusses, girders and pylons, windowframes, panes, shingles and pipes, bricks, tiles, bolts and nails.

## Serious Business

The business of recycling has become so serious that a whole new sub-discipline within architecture is developing around it, creating new departments in universities, as well as firms which specialize in it. Rensselaer Polytechnic Institute in Troy, New York recently sponsored a week-long conference on "industrial archaeology" under the direction of Edward S. Rutsch, chief industrial archaeologist, Paterson (N.J.) Excavations. More than 40 participants toured historic factory buildings, shipyards, and other "recyclable" facilities in upstate New York.

Rutsch contends that "the whole concept of recycling buildings" will gain wide acceptance "once labor comes in cheaper than materials." For some industrial clients, said Rutsch, that day has arrived: "Factory buildings . . . which can be used by present day enterprises are being adapted for new uses rather than torn down and replaced." In many cases, he said, "the rehabilitated building is superb — better than a modern structure, and substantially cheaper."

## Dallas Terminal Project

It's happening in Texas, too, as documented in a number of installments of "Endangered Species," a bimonthly column on historic preservation which has appeared in *Texas Architect* for the past two years. A Dallas project now on the drawing boards will combine the resources of city government and private enterprise to reincarnate the old Union Terminal, built in 1912 and used heavily until the decline of the railroads in the late 40's and early 50's. The City of Dallas, which owns the terminal, had scheduled it for partial renovation and conversion into a "multi-modal transportation center," to be used primarily for SURTRAN service to and from the Dallas/Fort Worth Airport. AMTRAK had also expressed interest in the facility, but the turning point came in April, 1974, when Woodbine Development Corporation, a division of Hunt Properties, suggested the terminal be included in a \$210 million mixed-use development, called "Reunion," whose other major features will be a 1000-room Hyatt-Regency Hotel and a 50-story office tower. These structures will be physically connected to the terminal via an enclosed mall of specialty shops and concessions suspended over a set of transit-rails at street level. Within the refurbished terminal, the City will administer its Transportation Center on the first floor, while Woodbine will restore and lease space on the second and third floors. This project, says a Woodbine brochure, "marks an unprecedented cooperation between public and private sectors . . . together they have devised a program which will breathe new life into downtown Dallas and provide a vibrant place for people throughout the coming years."

## Missing Cupola

Another example of adaptive-use preservation in Dallas, though completed three years ago and since featured in the *AIA Journal*, deserves reviewing here. It is the 84-year-old Cumberland School building on North Akard Street — the oldest public school in Dallas — immaculately restored as the corporate headquarters for Southeast Drilling Company (SEDCO), whose board chairman



Cumberland School before, after.



William P. Clements, Jr. acquired the property in 1969. Part of what makes the project so remarkable are the odds that stood against its survival. Not only was the schoolhouse smack in the middle of a zone gone starkly and overwhelmingly commercial, but it had been so thoroughly altered that, according to the article in the *Journal*, "it had little resemblance to the two-story original . . . its steep pitched roof and cupola had been removed . . . battlements and pointed arches had been devised . . . bricks of different size and color had been used."

Clements persevered, however, along with the Dallas architectural firm of Burson, Hendricks, and Associates, who, in tackling the job, were initially at a loss. "Until we saw an old picture of the original building," said James L. Hendricks, one of the firm's principals, "we didn't fully realize what was wrong with the building. It was that flat roof. We sketched the building with a pitched roof and cupola, and it was right."

### Recycling Towns

If it can be done with buildings, why not recycle whole towns, along the lines suggested in the editorial preceding this article? That's exactly what's happening in the old German village of Gruene, Texas, up the Guadalupe River a piece from New Braunfels. Because the town lies within commuting distance of several larger Hill Country cities, including Austin, it was purchased not long ago by a group of investors who intended to raze the town's buildings, some of them more than a century old, and install a snazzy housing

Chip Kaufman's ruin being restored in Gruene.



Photos by Chip Kaufman

development.

Then along came a fellow named Chip Kaufman, paddling his kayak down the river, who spied the town, decided he wanted to live and work there, located the owners, and persuaded them to let him try to earn them a profit on the real estate while not losing the buildings. A month later, he had arranged for the sale, at a profit quite satisfying to the owners, of every structure and most of the vacant land in Gruene. The buyers, to a one, were people like himself, who pledged to preserve the town's historic character. Some of those buyers have already moved to their old village, including a San Antonio stockbroker who has opted to become a vintner, and the place is buzzing now with the noise of saws and hammers at work toward period restoration.

### A Ruin Is a Ruin

Kaufman himself, with a degree in architecture from Princeton, has moved into the ruins of a large edifice near the river whose original function has not been clearly established. An admitted extremist in the matter of preservation, he is restoring his ruin as a ruin, at least on the outside, while inside conjuring up a wondrous amalgam of lofts, recycled bathroom fixtures, and parquet floors made from chunks and strips of "second-hand" lumber. What was formerly the town's dry-goods store has become one of the only two saddle-tree factories in the country, employing 20 people, with a leather tannery across the street. Old Gruene Hall, a saloon and dance emporium, has been recycled as a saloon and dance emporium



The Galerie in Gruene.

whose progressive country combos attract crowds of 400-plus on the weekends. Nearby, a tin-roofed house has become an art gallery, and soon there will be an ice-cream shop.

All of this is quite consistent with Chip Kaufman's vision: to re-create the town not as a glossy tourist attraction but a place where real live people live and work at real live jobs. The project is so rife with potential, so draped in the German/American/Victorian pioneer heritage of the Texas Hill Country, that it will soon be detailed at greater length in the "Endangered Species" column.



# The new rock group in town.

Introducing the Masonry Institute of Houston — Galveston.

We are a group of masonry contractors, union craftsmen and their suppliers, who have gathered together as a unique technical resource.

And, though we aren't as loud as the Rolling Stones, you can expect us to sing the many advantages of masonry construction.

We'll show you how masonry saves time and money as the structure goes up and keeps on saving through low maintenance and energy efficiency.

You will find us an excellent ready resource for cost comparison studies, design assistance, material performance, code requirements and specifications that will ease the burden of your next project.

To see how we can work "in concert", give J. Gregg Borchelt, executive director, a call at 629-6024.



**Masonry Institute  
Houston-Galveston**

Halbouty Building 5100 Westheimer  
Houston, Texas 77027







**DALLAS MARKET CENTER  
THE  
INTERNATIONAL  
MARKET**

*You are invited to visit the world's largest wholesale merchandise mart—4.8 million square feet.*

*At the Dallas Market Center you'll find the most outstanding and complete display of contract and residential furnishings and accessory sources for the architect and interior designer/specifier.*

*The addition of the World Trade Center, sixth and largest building in the giant complex, has added a new and exciting dimension in design resource displays.*

*Browse in the Contract/Design Center on the sixth floor of this beautiful new structure, and see the great concentration of contract and design furnishings—a capsule preview of the upcoming Dallas Contract/Design Show, January 14 through 16, 1976.*

World Trade Center  
Dallas Trade Mart  
Decorative Center  
Homefurnishings Mart  
Market Hall  
Apparel Mart

**DALLAS MARKET CENTER**  
2100 Stemmons Freeway  
Dallas, Texas 75207  
214-748-6832



# DALLAS MARKET CENTER



# TSA HONOR AWARDS

Renaissance 75 — this year's TSA convention theme, and perhaps an appropriate symbol for our times as well. Certainly there has been something of a renaissance, a new awareness, regarding environmental concerns. Consider the catchwords of the convention theme — Resources, Research, Recycle. Increasingly, we're realizing that earth's resources are finite, that we have to develop — through research — new uses of materials, new sources of energy, more effective means of energy conservation. And one inevitable result is the advent of recycling — adaptive re-use of materials, even of whole buildings — not merely as an innovation, but as a way of life. In short, we're concerning ourselves more and more with making our environment "work."

Each year on the occasion of its annual meeting, the Texas Society of Architects salutes a number of individuals and organizations whose awareness, whose concern for the quality of life in our en-

vironment, is evident in their actions and accomplishments. This year, ten honorees were selected from architects' nominations throughout the state. Reaffirming their own goals as shapers of the built environment, Texas architects have invited three individuals to be honorary members of the Society and have selected four individuals and three organizations for Citations of Honor. In presenting the following sketches of the award recipients, *Texas Architect* commends their exemplary accomplishments.

*Note: Not available at press time are the results of the John G. Flowers award program, which honors selected representatives from the media for excellence in architectural and environmental reporting. In addition, TSA utilizes the occasion of the convention to honor one of its own members with the coveted Pitts Award, presented for significant contributions to the profession. See the next issue of Texas Architect for an announcement of these honorees.*

# 1975



Moore's Fort, being moved to Round Top



**George E. Kana, Hostyn**  
Posthumous Citation of Honor

For a man in his late sixties, George Kana was active and robust at the time of his death this July 20— active in the trade that earned him the title, "House Mover of Fayette County." Quitting school at the age of fifteen, Kana apprenticed under his father, who had begun moving buildings by primitive means in 1895. Kana married in 1936 and remained in business with his father for nine more years. He and his wife reared four sons and two daughters in the little farming community of Hostyn; all four sons eventually joined Kana in the house-moving business he started for himself in 1946.

Since that time, almost 2500 structures—some 25 of which are historically significant—have been relocated by this family team in and around the Central Texas towns of Fayetteville, Brenham, LaGrange, Round Top, Columbus and Weimer. Hence, many grand old Texas buildings, restored to usefulness and beauty, exist today as memorials to the work of George Kana.

Tools of the trade have advanced markedly since the days Kana's father used tree-trunk beams, 36" wooden wheels on 8" axles, and a stump puller to move a building less than a mile a day. But Kana retained from the past a rare sense of responsibility and a devotion to his work. "To see him and his four sons complete an operation of delightful perfection," observed one architect, "is an experience long to remember." And George Kana himself long will be remembered as the true craftsman that he was.





**L. B. Houston, Dallas  
Honorary Membership**

In 1932, when only the more fortunate could find jobs, young L.B. Houston was happy to join Dallas' Public Works Department as a surveyor's assistant, though he was fresh out of SMU with a degree in engineering. This was merely the beginning of 40 years of service to the city of Dallas.

Houston rapidly advanced to Junior Engineer, Assistant Senior Engineer, and, in 1935, to Assistant to the City Manager. Then, in 1939, Houston began a 33 - year career as Director of Parks and Recreation which would bring nationwide prestige, not only to himself, but to the city of Dallas. By the time he retired in December of 1972, the parks system had grown from 5,295 acres to 16,225 acres. The number of parks had increased from 51 to 188. And bond funds totaling \$60 million had been utilized in constructing 11 recreational buildings, 18 large swimming pools, 42 small swimming pools, 188 ball diamonds (of which 82 are lighted), and 60 tennis courts, including the first tennis center at Samuell - Grand Park — all comprising a system rarely equalled by any city.

Held in high regard among professionals in the parks field, Houston has received a number of national awards for excellence in park development and administration. In 1950, he began cooperating with Texas Tech University in developing a cooperative college level training program for students of Park and Recreation Administration.

Houston also was one of the original 80 "Goals for Dallas" conferees. And it was through his years of dedicated service that many of their hopes for the city have been realized.



**Walter Nold Mathis, San Antonio  
Honorary Membership**

Walter Nold Mathis is descended from a long line of prominent Texans. His forebears were among the original group of settlers who came to San Antonio from the Canary Islands in 1731. His grandfather was Thomas Henry Mathis, pioneer South Texas Rancher for whom the town of Mathis, Texas was named and also founder of Rockport.

But Mathis is a prominent Texas and San Antonio Citizen in his own right. An investment banker and former president of Dittmar and Co., Inc., Mathis is also active in many of the city's most prestigious civic and social organizations. He is a past president of the Order of the Alamo and of the San Antonio Symphony Society. Currently, Mathis is chairman of the San Antonio Board of Review for Historic Districts and Landmarks, which is charged with review of exterior changes in three districts: La Villita, King William, and the recently added Monte Vista.

One of Mathis' most significant areas of accomplishment regards his involvement, from its very inception, with San Antonio's River Walk. He has served four terms on the Riverwalk Commission and was its first chairman, establishing initial high aesthetic and architectural standards. He was primarily responsible for the inclusion of funds for the riverwalk in the city's 1964 bond election, and has personally influenced many individuals to purchase and restore buildings along the river for productive use.

An ardent preservationist, Mathis has been presented an unequalled total of five citations by the San Antonio Conservation Society. In 1968, he bought the 1873 Russel Norton house on King William Street and restored it to be his home, and since that time has purchased and restored four additional houses on the same street. Currently, he is involved in the restoration of still five more houses in the historic district. Others have followed Mathis' example, and the restored elegance of the area is eloquent testimony to his efforts.



**Admiral H. R. Nieman Jr., Austin  
Honorary Membership**

On February 1, 1958, Rear Admiral H.R. Nieman retired from the U.S. Navy after an illustrious career of 30 continuous years of active commissioned service. Since assuming his duties as director of the State Building Commission in 1959, his service has been equally meritorious.

The original mission for which the State Building Commission was created was limited to long range planning and development of the Capitol Complex to house the burgeoning growth of state agencies, but the Legislature acted in 1969 to centralize the construction functions of several state agencies. The State Building Construction Administration Act of 1965 merged the Design and Construction Division of the State Board of Hospitals and Special Schools (MH & MR) and the Engineering Division of the State Board of Control into the structure of the State Building Commission. Thus was established for the first time in Texas a fiscally sound method of project pre-planning that enables agencies to obtain professional architect-engineer budget planning services in a direct and ethical procedure prior to and in support of the legislative appropriation process. Prior to 1965, the total cost of construction supervised by the State Building Commission was \$11,591,898; since the reorganization in 1965 the total value of contracts supervised has reached \$134,296,618.

Throughout this 16-year period of agency growth and development, the direction given by Admiral Nieman has insured economical use of tax dollars for high-quality construction and a professional approach in dealing with architects, engineers and contractors who do business with the State of Texas.





**James E. Bertram, Lubbock**  
Citation of Honor

"Outstanding is the word for James E. Bertram," says one prominent Lubbock official, "outstanding in all of his efforts to improve the environment of the City of Lubbock."

Bertram was a Park Administration major at Texas Tech University when he began working for the Lubbock City Planning Department. After his graduation in 1966, he began full-time employment as a planner for the city. It was during the next two years that Bertram became the primary movement behind the Canyon Lakes project, conceived as the transformation of a neglected eyesore and dumping area into an open space greenbelt used to store reclaimed water in a series of recreational lakes.

After two years of service as Director of Planning in Wichita Falls, Bertram returned in 1970 to assume that position in Lubbock immediately following passage of a \$12 million bond election prompted by excessive tornado damage to the city. Since that time, Bertram has been involved in the implementation of numerous projects, including parks and recreation programs, a new civic center, and a comprehensive master plan for Lubbock's growth.

With its first phase now underway, the Canyon Lakes project is becoming a reality. Also largely due to Bertram's efforts, a revised zoning ordinance, including a progressive sign control section, was adopted by Lubbock this June and is expected to be a model for many other cities.

Bertram's talents add up, as one associate remarked, not only to "the best in coordinated planning" but the "ability to turn planning into action."



**Scott Fikes, Fort Worth**  
Citation of Honor



That Fort Worth parks are known for their beauty is due to the workings of nature—with more than a little assistance from Scott Fikes, former Superintendent of Horticulture for the city.

Fikes, a registered landscape architect, was Superintendent of Parks and Recreation for the City of Abilene for seven and a half years before coming to Fort Worth in 1958. He spent the next sixteen years making the city and its parks more beautiful, retiring in January of this year.

Fikes' most significant accomplishments in his service with the city perhaps have been associated with the famous Botanic Gardens. He has initiated many improvements within the gardens—established in 1932—such as irrigation systems, expanded greenhouse capacities and extensive azalea and dogwood plantings. Also, Fikes played a significant role in the planning and construction of a major addition—the Japanese Garden.

Fikes conceived the basic idea for the garden, which was designed by Kingsley Wu in 1968. It was constructed entirely by Parks and Recreation Department personnel under Fikes' supervision and according to his modifications of the final design. The result, a model of authenticity enjoyed by thousands of visitors each year, is what one observer termed, "not only a place for the cultivation of trees and flowering plants, but one that provides secluded leisure, rest, repose, meditation and sentimental pleasure."



**Raymond D. Nasher, Dallas**  
Citation of Honor

Raymond D. Nasher, of Dallas, is one of the nation's leading planners and developers and, in his support of design excellence, has contributed to the quality of the built environment.

His Dallas-based firm has been responsible for the planning and development of numerous projects over the past 25 years. His NorthPark Center, consisting of a retail shopping center, office park, bank and entertainment facilities, is considered a model development and has received numerous architectural and design awards.

He was responsible for the overall land planning for Flower Mound New Town and is currently developing SpringPark, a 15,000 acre planned community north of Dallas. Additionally he has developed industrial parks, residential units, office buildings and apartments.

Long active in business, educational and civic affairs, Nasher is currently serving as an Honorary Visiting Fellow at the Harvard Graduate School of Education and the University of Massachusetts.

Additionally, he serves on the Board of Trustees for Duke University, the Salzburg Seminar in American Studies, as a member of the National Public Affairs Council of the National Public Affairs Center for Television and the School of Architecture Foundation Advisory Council, University of Texas at Austin.

He is also vice-chairman of the Dallas Chamber of Commerce, heading the Central City Development Committee.

He was a member of the President's Committee of Urban Housing and a member of the Advisory Committee on Urban Affairs to the Secretary of Housing and Urban Development. Nasher has toured a number of foreign countries on behalf of the U.S. Department of State, lecturing on urban planning and development.





**Amon G. Carter Foundation, Fort Worth**  
Citation of Honor

It was just about a year ago that Amon G. Carter Jr. presented the one-of-a-kind Fort Worth Water Garden to the citizens of Fort Worth on behalf of the Amon G. Carter Foundation. Since that time, it has proved to be the "place for people" architect Philip Johnson intended it to be.

Occupying four and a half city blocks just south of the Tarrant County Convention Center, the maze-like system of waterways, walkways and open spaces replaces a section of old buildings formerly referred to as the blight of the downtown area. The garden offers five special recirculating water effects, which are illuminated by night, and a wide variety of foliage.

Mrs. J. Lee Johnson III, vice president of the foundation, said the garden was intended to provide for the people of Fort Worth "a place to come and enjoy open space." "I hope the people will come down and enjoy the park like the Europeans do," she said during the garden's dedication. And, indeed, the people are always there. A versatile gathering place, the park has been the scene of events ranging from simple strolls to concerts and meetings — a positive influence on the quality of life in the Fort Worth community.



**Center for Urban and Environmental Studies, Dallas**  
Citation of Honor

Recognizing Dallas' need to cope effectively with its own growth, Southern Methodist University in 1968 formed the Center for Urban and Environmental Studies (CUES). It was established to provide "a framework for research dedicated to a better understanding of urban and environmental problems; by executing community service projects intended to inform and serve, it produces trained and enlightened citizens to give constructive community leadership in dealing with these problems." The Center currently is under the leadership of Director Bennett I. Miller and Associate Director Jo Fay Godbey.

The concept was a logical one — a combination of resources including permanent staff, students, and all the wide-ranging expertise of the university faculty brought to bear on the problems of living in a dynamic and complex society. And the concept has worked well. Since its inception, with financial support from government sources, private foundations, and the Board of Higher Education of the United Methodist Church, CUES has been involved in numerous major research projects. It has contributed to the development of a plan for re-educating DWI offenders. It has analyzed Dallas' growth patterns and developed new methods of economic research. It has determined health needs of disadvantaged neighborhoods. And, in the Town Lake Environmental Awareness study, it has brought together various disciplines to consider the project as an environmental model.

While in the process of doing research, the center has endeavored to involve members of the community in conferences dealing with a wide range of related subjects such as environmental improvement programs, land-use planning, greenspace, recycling, energy, and even organic gardening. In short, the center has addressed itself to the concerns of today.



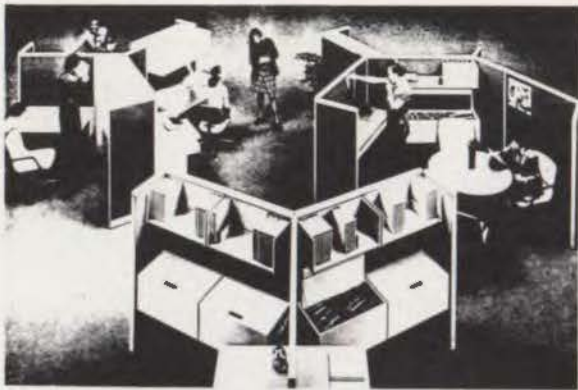
**Franklin Savings Association, Austin**  
Citation of Honor

To Franklin Savings Association, "saving" means "money," but it also has meant the preservation of two historical Austin homes, and their restoration to productive use as branch offices of the organization.

Endorsing the maxim that preservation is progress, Franklin Savings purchased the 1870's vintage Bernard Radkey house in 1973, had it moved from Trinity Street to 3721 Jefferson, and converted it into the association's West Branch. Restoring the modest, vernacular frame house—an excellent example of a typical Austin home in the late Nineteenth Century—represents to the organization "an opportunity for us to conduct our business in charming surroundings and as a gesture of our involvement with the Austin community."

More recently, Franklin Savings purchased the Italianate Victorian-style Walter Tips House (see *Texas Architect*, July/August 1975) and had it moved from its endangered downtown location to the 2300 block of South Congress. By February 1976, it should be completely and authentically restored for use as the South Congress Branch. "We're investing a lot of time and money in the restoration of the Tips House," commented Franklin President Charles Betts, "but the result will be lasting."





# total responsibility

(it's never too early to call us.)

With today's high costs of office space, personnel and the complexities of choosing the right office furnishings from a vast marketplace, your client demands a great deal more from you. He wants productivity within an attractive working environment. He wants maximum space utilization at a minimum cost. By calling on Texas Office Supply Company early in your project, we can work together to eliminate the confusion and aggravation and fulfill your client's objectives easily and quickly. We're specialists in the office furnishings field.

Through our knowledge of the market and our forty years experience, we can advise you on many important factors: which manufacturer's products perform as promised, which manufacturer's delivery dates are reliable, how long you should allocate for installation, what products can be provided in the shortest time and many more vital points that can make your furnishings project easier and less costly.

By utilizing our program, we can manage, co-ordinate, supply, and install your entire office furnishings project:

1. TOTAL CO-ORDINATION RESPONSIBILITY. From start to finish, we can co-ordinate and manage your entire project, covering all interior items. We handle all the thousands of details and mountains of paperwork.

2. COMPLETE SOURCE, SPECIFICATION, AND BUDGET CONSULTATION. We've studied today's marketplace and can best advise you what products will most effectively fulfill your design, work flow, and budget criteria.

3. SHOWROOM DISPLAY. We display and store in 152,000 square feet over 200 different manufacturers' furniture, giving you an opportunity to see exactly what you're buying.

4. RECEIVING, WAREHOUSING, AND DELIVERING. Our own crews receive, unload, warehouse, and deliver your client's furniture expertly, safely, and accurately.

5. INSTALLATION. Our own mechanics and project supervisors are present when all contract jobs are delivered to insure proper installation.

6. LOAN FURNITURE. If there is any delivery delay, we'll loan your client furniture until his is delivered.

7. FREIGHT AND DAMAGE CLAIM ADJUSTMENT. Our traffic department handles all claim adjustment details.

8. REPAIRING AND REFINISHING. Our factory trained crews make sure your client's furniture remains the way he ordered it.

9. LEASING. Our in-house leasing company is available at all times to those who want to enjoy the advantages of leasing.

Let Texas Office Supply Company co-ordinate, manage, supply, and install your office furnishings project no matter what size it is from the very beginning . . . . .

Jerry Axelrod, Texas Office Supply Co.  
Executive Offices/ Showrooms, 6628 Gulf Frwy.  
P.O. Box 12278, Houston, Texas 77017  
713/644-6241

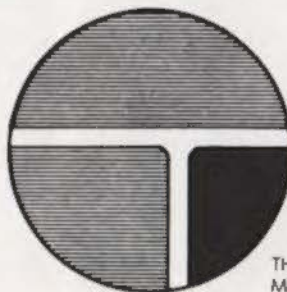
We are interested in how your services can be of help.

Name \_\_\_\_\_

Firm Name \_\_\_\_\_

Address \_\_\_\_\_ Phone \_\_\_\_\_

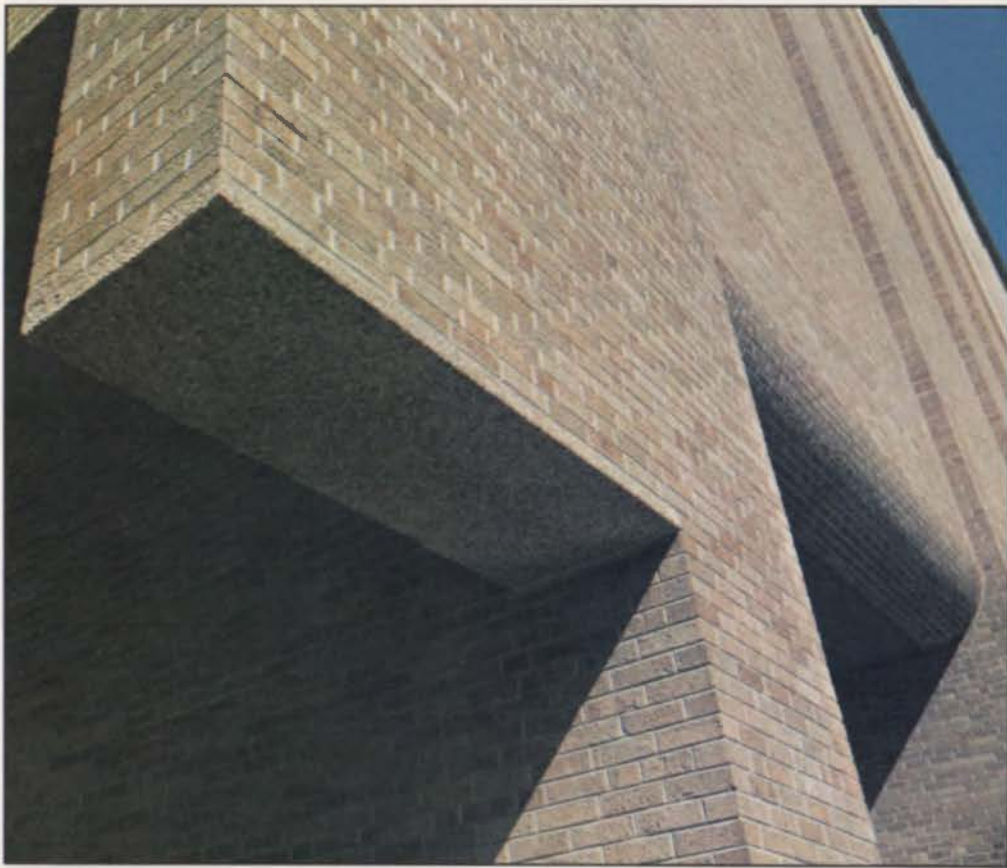
City \_\_\_\_\_ State \_\_\_\_\_ Zip \_\_\_\_\_



**texas  
office  
supply  
co.**

THE PROFESSIONALS IN OFFICE FURNISHINGS  
MEMBER CONTRACT FURNISHINGS COUNCIL









# Masonry's Many Faces

Masonry's faces are as individual and varied as the construction industries' people who build them. We combine many diverse people and skills with a palette of materials to provide you, the designer, with an infinite variety of forms.

Masonry offers: Concrete block units for customized design • The human scale of brick capable of both delicate arches and bold masses • The architectural concrete panel, unit masonry panels, stone, marble and limestone.

Masonry's beauty, however, is more than skin deep for as well as providing aesthetics, it also provides a return to basics. Where a hand-held, hand-assembled product can be designed as the most economic, cost effective and maintenance free method of enclosing space.

For more information on the many faces of masonry, write: The Texas Masonry Institute, Post Office Box 9391, Fort Worth, Texas 76107 or call collect 817-732-0041.

Contributing member cities:

Dallas, Fort Worth, Waco, San Antonio, Corpus Christi, Austin, El Paso





# A magazine about architecture ought to be more than a magazine about architecture.

It ought to be about architecture plus society — the sum of human activity shaped by and shaping the built environment. It ought to be about art and politics, psychology, history, science, education and ecology. It ought to be about land use and urban planning, economic trends, energy alternatives, women and minorities, health care, primitive structures, population and transportation. It ought to be of interest to architects, electricians, students, housewives, bankers, doctors, lawyers, bus drivers, secretaries and teachers. It ought to listen to its readers as well as speak out to them. This is the kind of magazine which *Texas Architect* has spent the last year attempting to become. When you subscribe, this is the kind of magazine you will receive.



## Texas

**Architect:** Please enter my subscription for the coming year. Six issues, mailed bimonthly.

Regular / \$5

Student / \$4

Check or money order enclosed.

Please bill me.

Please send me a free sample copy.

Name \_\_\_\_\_

Address \_\_\_\_\_

City \_\_\_\_\_ State \_\_\_\_\_ Zip \_\_\_\_\_

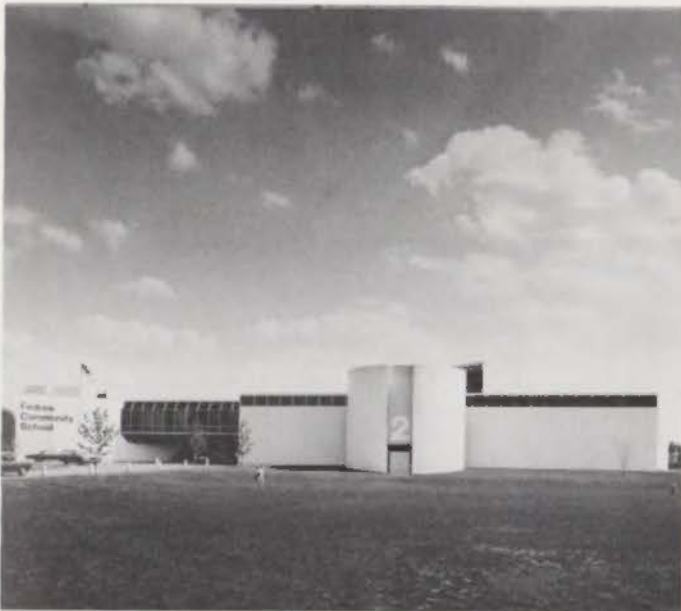
(If student, name of school \_\_\_\_\_)

Clip and mail to *Texas Architect*, 800 Perry Brooks Building/Austin, Texas 78701.





**FIRST PROFESSIONAL BANK—HOUSTON**  
 Owner: First Professional Bank, N.A.  
 Architect: S. I. Morris Associates—Houston  
 Contractor: Texco Construction Corp.  
 Completed: 1975



**FODREA COMMUNITY SCHOOL—COLUMBUS, INDIANA**  
 Owner: Bartholomew Consolidated School Corporation  
 Architect: Caudill Rowlett Scott—Houston, New York, Los Angeles, Beirut  
 A. Dean Taylor—Columbus, Indiana  
 Contractor: Repp & Mundt, Inc.—Columbus, Indiana  
 Completed: 1973

Photo by Barbara Martin



**FIRST INTERNATIONAL BUILDING—DALLAS**  
 Owner: A joint venture of First National Bank in Dallas and Prudential Insurance Company of America  
 Architect: Harwood K. Smith & Partners, Inc.—Dallas  
 Hellmuth, Obata & Kassabaum, Inc.—Dallas & St. Louis  
 Contractor: Henry C. Beck Company—Dallas  
 Completed: 1975

## Nine Winning Designs

*These are the projects which came out on top in Texas Architecture 1975, this year's repeat of TSA's annual design awards program. Selected from some 200 entries submitted by Texas architects, the winners will be featured by Texas Architect in greater depth throughout the next year.*





**IRWIN UNION BANK AND TRUST COMPANY BRANCH  
BANK—COLUMBUS, INDIANA**

Owner: Irwin Union Bank and Trust Company  
 Architect: Caudill Rowlett Scott—Houston, New York, Los Angeles, Beirut  
 Contractor: Frederick Quinn Construction Company—Arlington Heights, Illinois  
 Completion: 1975



**PEACEABLE KINGDOM BARN—NAVASOTA**

Owner: The Peaceable Kingdom Foundation  
 Architect: Architects Incahoots and Associates—Houston  
 Contractor: Built by owner  
 Completed: 1974

Photo by Ed Stewart



**KPRC TELEVISION STUDIOS—HOUSTON**

Owner: Channel Two Television Company  
 Architect: S.I. Morris Associates—Houston  
 (Building commissioned when firm was Wilson, Morris, Crain and Anderson)  
 Contractor: W. S. Bellows Construction Corp.—Houston  
 Completed: 1972





**MICHAEL MONCRIEF PARK—CHANNELVIEW**

Owner: Harris County  
 Architect: Alexander/Murray Associates—Houston  
 Contractor: Malvin L. Ross General Construction Corp.—  
 Pasadena  
 Completed: 1975



**MCCORMICK RESIDENCE—CENTRAL TEXAS  
 COUNTRYSIDE**

Owner: Mr. and Mrs. Sanford McCormick  
 Architect: The Firm of Irving Phillips, Jr. and Robert W.  
 Peterson—Houston  
 Contractor: Walter Thielemann  
 Completed: 1974



Photo by Rick Gardner

**BROCHSTEIN RESIDENCE—HOUSTON**

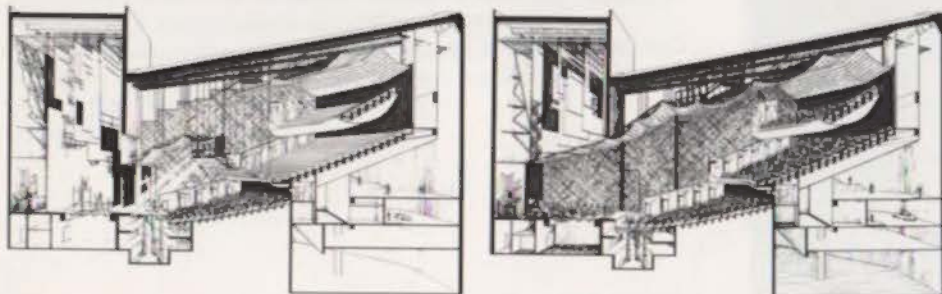
Owner: Mr. and Mrs. Raymond Brochstein  
 Architect: Brochstein, Todd and Cannady—Houston  
 Contractor: Homer Leonard Builders—Houston  
 Completion: 1975





## Elegance Sans Cliche

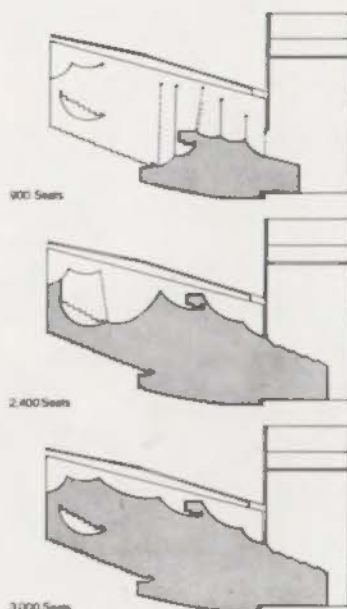
Photos by Balhazar Korab



On a 3 1/3 acre plot by a railroad track now stands a cultural link between the University of Akron and the city of Akron, Ohio—the award winning Edwin J. Thomas Performing Arts Hall.

Designed by the Houston-based firm of Caudill, Rowlett, Scott, Inc. and the Cleveland firm of Dalton, Van Dijk, Johnson and Partners, the Hall has been described variously as “a study in minimal sculpture” and “a building of elegance without cliches.” New York Times architectural critic Ada Louise Huxtable termed it a structure of “drama and sensuality.”

And a dramatic sight it is. The building rises from a landscaped plaza in a geometry created by four major elements: the stage loft, the “great wall” which hides the railroad tracks, and two circulation towers. These elements define and enclose the public lobby spaces which in turn wrap around the house. The building has one





Honor Award  
Texas  
Architecture  
1974

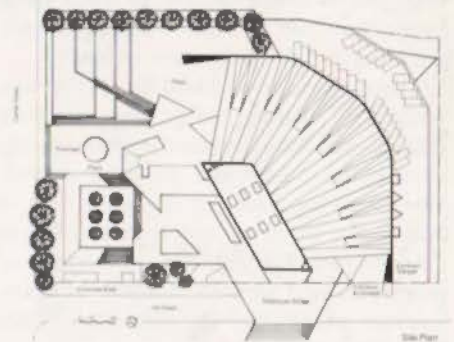


entrance which faces the University across the tracks and a second entrance which faces the town. To arriving patrons, the angled structure appears to be folded into terraced steps and plantings which lift them from the parking and access roads below the Hall to entrances on several levels above.

The massiveness of the poured concrete building is juxtaposed against the glass entrance walls on two sides which are butted and joined without metal. This juxtaposition of massive weight and airy spaciousness is repeated throughout the building. The clerestory-lit main lobby soars to the full height of the 90 foot "great wall" which insulates the whole complex from the nearby railroad.

Twenty-seven chrome-plated steel cylinders, weighing 47 tons and counterweighting the 44-ton ceiling of the auditorium, hang in the lobby like sculpture suspended in space.

Movement through the building is not a





static definition or limitation of spaces, it is a dynamic flow of spatial experiences reflecting the excitement of cultural events within. The lack of right-angle corners, the placement of offices, equipment rooms and storage areas away from public areas and the folded-plate concrete roof—set back in elevation and made as thin as possible to reduce its mass—all contribute to this sense of spatial freedom.

Unlike conventional performing arts halls which are usually rectangular, the auditorium is a 30-degree fan shape in which no seat is more than 132 feet from the stage. Few auditoriums with a similar 3,000 seat maximum capacity have such short sight lines.

The ceiling, consisting of 3,800 interlocking steel sections, hangs on 20 miles of wire and cable in natural catenary curves. In a short 15 minutes, the 44-ton ceiling can be lowered mechanically to the level of the flying balcony to reduce the size of the hall to 2,400 seats. By lowering it further, to the grand tier rail, the audience size is reduced to 900. Hence, the effect of a full house is maintained regardless of the audience size. And like the Hall itself, the size of the orchestra pit can be adjusted to suit the occasion.

The latest techniques of acoustical science have been used in the auditorium. The decibel level in the last row of the flying balcony is virtually the same as for the orchestra level. Sound dispersal is controlled by repeating curved plaster wall sections in the auditorium and by 38 adjustable felt draperies in front of the wall.

Continental seating eliminates aisles, providing access through side foyers with entry ways every three rows. The seats, designed to allow people to push back rather than rise for those entering a row, are staggered for maximum vision.

Throughout the building there are systems of plazas, ramps and elevators that permit easy access for patrons, including the elderly and the handicapped. The receiving dock for the stage area is behind the building and is at van height for efficient loading and unloading of properties and scenery, another of many features which elicit the response, "They thought of everything."



Architect/Engineer: Century A-E  
Contractor: Henry C. Beck Company

Louisiana Downs Race Track, Shreveport, Louisiana offers a new concept for thoroughbred parimutuel betting . . . . . but when it came to the selection of the steel frame for the luxurious clubhouse/grandstand facility they didn't want to gamble!

The job required the stability of a recognized fabricator with the flexibility to deliver on a *fast-track* schedule.

In less time than was anticipated, Mosher delivered 3600 tons of steel in time for the track to open its gates.

When you are operating on a *fast-track* schedule but you don't want to gamble . . . . . Mosher's track record makes them the odds-on favorite.



**MOSHER**  
STEEL COMPANY

fabricators of steel since 1885



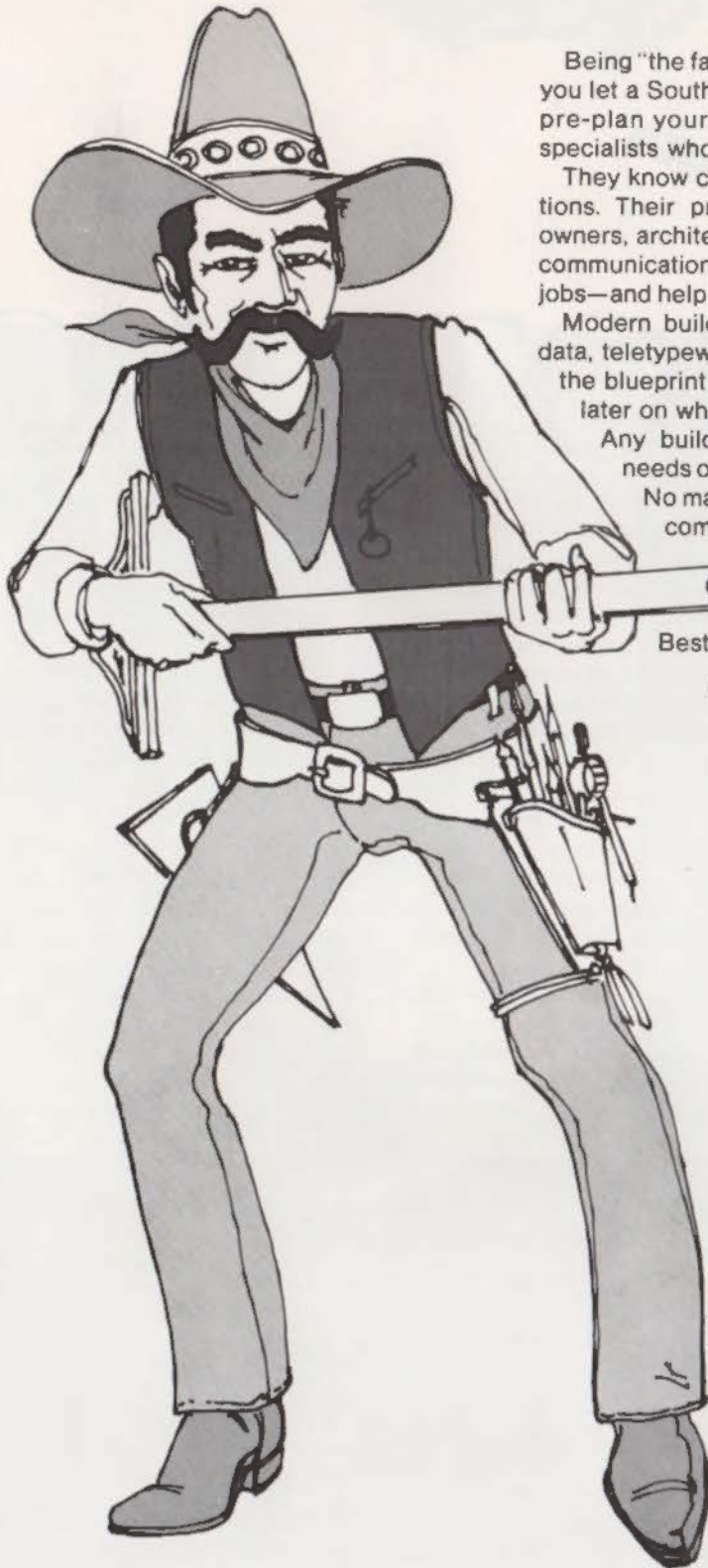
A Trinity Industries Company

HOME OFFICE AND PLANT:  
3910 Washington Ave., Houston.

OTHER PLANTS:  
Dallas, Lubbock, San Antonio,  
Shreveport, Tyler.



# Before you draw, give us a call.



Being "the fastest pen in the West" could lead to problems, unless you let a Southwestern Bell Building Industry Consultant help you pre-plan your communications facilities. Our consultants are specialists who talk your language.

They know construction procedures and they know communications. Their primary responsibility is to work with developers, owners, architects and designers...to offer professional advice on communications techniques and procedures that will simplify your jobs—and help keep your clients or occupants happy.

Modern buildings call for modern communications: telephone, data, teletypewriter, video. If these are planned early—well before the blueprint stage—expensive alterations can often be avoided later on when the occupants' communications needs increase.

Any building designed to meet only the communications needs of today may be obsolete before it's finished.

No matter what kind of building you're planning—an office complex, a residential building, a school, a supermarket, a medical center or even a split-level hacienda, give us a call. The toll-free numbers are listed below.

Best news of all: there's no extra charge for this service.

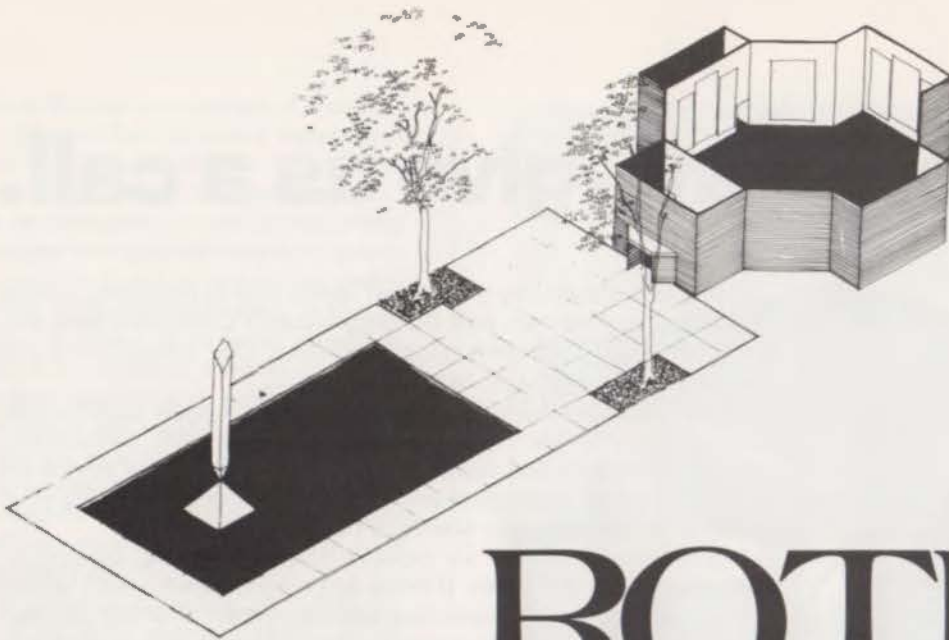
Dallas 1-800-492-6728    Houston 1-800-392-4912

San Antonio 1-800-292-5416



**Southwestern Bell**





# ROTHKO

Conceived as an ecumenical house of worship where people can "meet and experience their brotherhood," the Rothko Chapel provides a unique atmosphere for religious experience.

"It has to do of course with the sacredness of the place," says Dominique de Menil, who with her late husband, John de Menil, commissioned the project as a gift to Houston. "One can be isolated and yet not alone. There is both solitude and warmth—one feels in the center of the world and yet without any outside interference."

Art critic Paul Richard has said of the chapel, "I have visited Iona, the isle of the Druids, the burial place of Macbeth and of Viking kings, I have seen the chapel of Le Corbusier at Ronchamp, but never have I sensed more surely the presence of the holy."

The structure which forms this vener-

ated space, dedicated in 1971, was designed during the former partnership of architects Howard Barnstone and Eugene Aubry. The project was a collaboration with Mark Rothko, the late American abstract expressionist painter whose name the chapel bears and whose work it houses. In a small park the chapel sits—a windowless skylighted brick octagon, reminiscent of the Torcello baptistry. It faces a reflection pool in which stands the late Barnett Newman's "The Broken Obelisk," a twenty-six-foot-high steel sculpture purchased by the Menils as a memorial to Dr. Martin Luther King Jr. (It has been said that the monument serves the chapel as a steeple serves a church.)

Inside, the octagonal shape of the chapel facilitates audience participation. An embryonic apse breaks the octagon's regularity; narthex and vestries complete the plan. Fourteen dark and mysterious

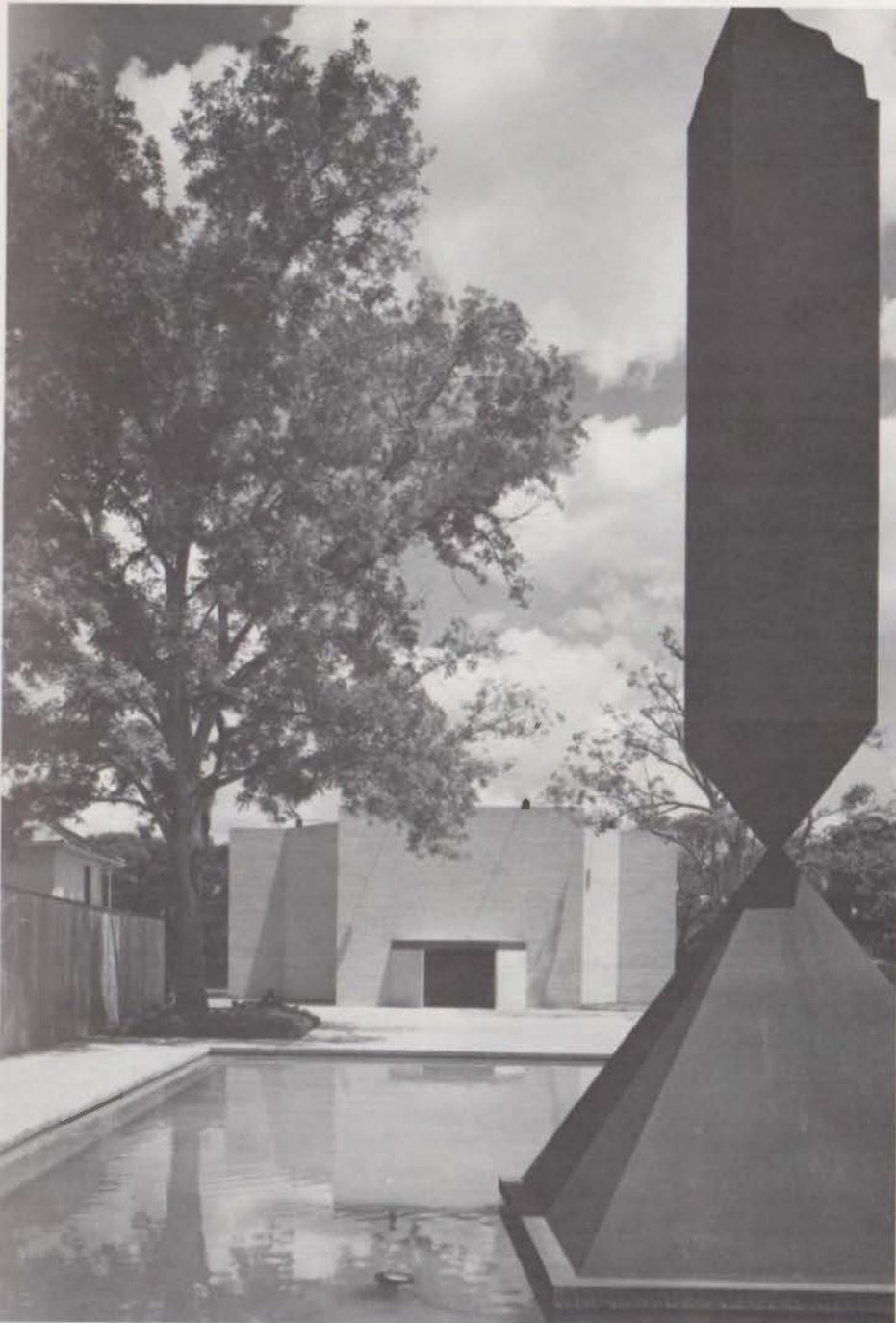
Rothko paintings, which he termed his "supreme achievement," glorify and spiritualize the simple building which houses them. On walls of muted gray hang the immense canvasses—some as large as 15' by 11'—each achieving full impact from its association with the others. Axial paintings at entry and apse are tensionally opposed as are the mosaics at Torcello; an expansive dark field at the entry is in contrast with the hopeful reddish glow of panels in the apse.

"Rothko wanted to bring to his paintings the greatest piognancy they were capable of," says Mrs. de Menil. ". . . Indeed, they are intimate and timeless. They embrace us without enclosing us. Their dark surfaces do not stop the gaze. A light surface is active—it stops the eye. But we can gaze right through these purplish browns, gaze into the infinite."

Photos by Rick Gardner

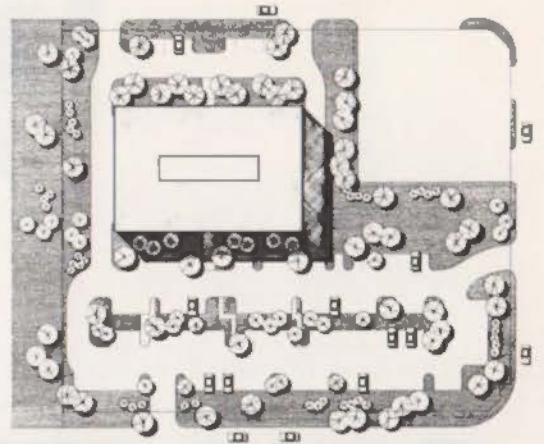






Honor Award  
Texas  
Architecture  
1974







Honor Award  
Texas  
Architecture  
1974

# A Home for Lone Star Steel

It all works together so well—the sharp, horizontal lines intersected and softened by the roundness of regular vertical columns. The design award jurors called it “a composed, restful composition.” Lone Star Steel calls it home.

When company officials decided it was time to expand into a new headquarters building, they located a potential site in North Dallas. Near Love Field, it would be a convenient location for executives who make regular shuttles via company aircraft to Lone Star’s East Texas mill. And it was a pretty piece of property, facing a major traffic artery.

When the site transaction was complete, the company commissioned the Dallas firm of Dale E. Selzer Associates to design the building, and together they selected Richard Myrick as consultant for landscaping.

In dealing with the site, the architects found a situation in which two old buildings existed on the front third of the property, while the rear portion was filled with untouched native woods. The resulting design scheme called for the new structure to fit into the open area then occupied by the old buildings. That left only the heavily wooded portion of the lot for employee parking.

However, there was no broad-scale leveling of trees to make way for asphalt. Rather, the architects carefully worked the parking spaces into the wooded area so as to preserve most of the native trees.

The building design yielding three floors is also a direct response to the site. A ground floor provides a readily accessible main reception area and an open arcade, as well as room for mechanical equipment, storage, and executive parking. The result is that the two necessary floors of office space are elevated above the trees, providing a good view of the Dallas skyline from the third floor.

The four-foot diameter structural columns dominate the building’s exterior and reduce the promi-



nence of the lower level parking spaces. These columns are made of three-foot diameter structural steel pipe (produced by Lone Star Steel) fireproofed with precast concrete. They also serve as vertical risers for the perimeter air conditioning system.

*Dale E. Selzer Associates, Inc. is a medium-sized firm providing complete architectural services, including land use planning, master planning and interior design. The firm has completed a wide range of institutional, commercial and residential projects which have been honored with some thirteen awards.*

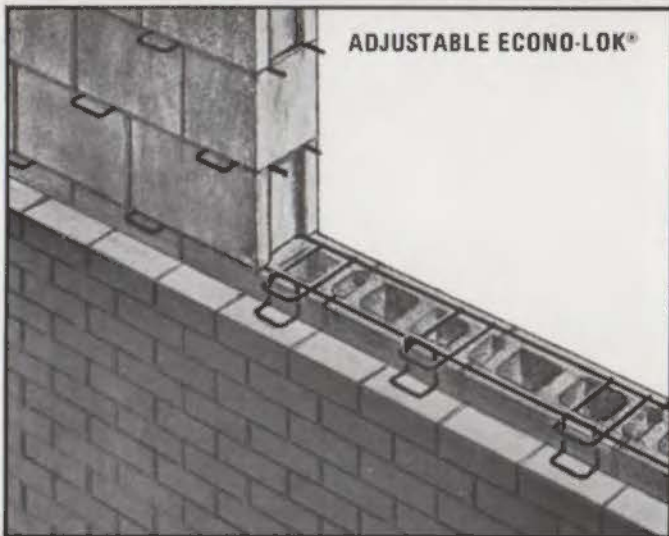


**NEW!**

STONE-LOK™



ADJUSTABLE ECONO-LOK®



BLOK-TRUS™



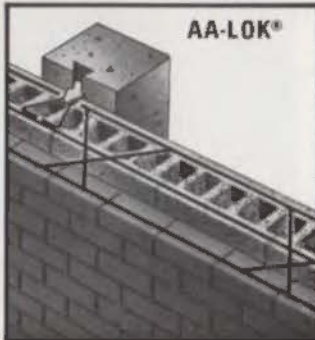
BLOK-LOK®



BLOK-TITE®



AA-LOK®



## It takes know-how to speed construction while cutting costs... and it's yours in all Blok-Lok of Texas AA reinforcing.

"Know-how" is exactly what 28 years of creating and developing successful masonry reinforcing has given Blok-Lok of Texas, Inc. This knowledge is put into the design of every AA brand product and that includes almost every type available. Blok-Lok of Texas, Inc. is a licensed manufacturer of famous AA brand reinforcing. Take Adjustable Econo-Lok for one example. Far sighted contractors are using this system to erect block walls on apartments without putting the facing on. The purpose . . . to get the roof on fast . . . weeks, sometimes months, ahead of schedule. The mason can then come back at a later date to tie in the face perfectly with the block even if the joints don't line up.

This is all possible using Adjustable Econo-Lok. It's flush welded too, strongest weld in the industry. All AA masonry reinforcing systems save labor - no headers to lay. See which AA reinforcing is best for you. Check the largest selection of systems and ties in the industry in the free New AA Guide. It includes 28 years worth of experience, specifications and information!

Blok-Lok of Texas, Inc.,  
9017 Diplomacy Row,  
Dallas, Texas 75247.  
Manufactured in Chicago, Dallas,  
and Toronto, Canada.



Reference:  
Spec Data and Sweets

## BLOK-LOK OF TEXAS, INC.



LICENSED MANUFACTURER OF AA WIRE PRODUCTS



CONTRACT  
FURNISHINGS  
FROM  
SCOTT RICE  
OF TEXAS

Steelcase  
Stow Davis  
Alma  
Gunlocke  
Hiebert  
Hardwood House  
Westinghouse  
Eppinger  
Group Artec  
Metropolitan



office design furniture supplies  
po. box 47924 dallas, texas 75247  
showroom and offices  
3215 e. carpenter hwy. irving, texas  
phone: 214-438-7631

Whip Inflation Now  
**SPECIAL OFFER**  
**FROM**  
**HOTEL**  
**ADOLPHUS**  
DALLAS

**(the Hotel People Always  
Want to Come Back to)**

**15%\* discount on any  
Bedroom any Sunday, Monday,  
Tuesday, Wednesday, or  
Thursday Nights.**

**50%\* discount on any  
Bedroom Friday and Saturday  
Nights.**

Call us on our Texas Watts line  
1-800-792-8922 or our regular  
number 1-214-747-6411 or write to  
Arthur W. Lang, Jr., General  
Manager, Hotel Adolphus, 1321  
Commerce, P. O. Box 2340,  
Dallas, Texas 75221.

Please Bring This Ad With You  
To Receive Your Discount.

\*Sorry, but discount is not valid  
if you are attending a convention or  
meeting in the Hotel.

Coupon Good till 12/31/75

Commerce at Akard (214) 747-6411

# Endangered Species



Kiam Building, 1893

## Houston Momentum

In terms of efforts toward historic preservation, the folks in Houston appear to be sustaining an impressive momentum which first became evident several months ago, when the Harris County Commissioners were finally dissuaded from tearing down the Pillot and Sweeney-Coombs-Fredericks Buildings, as well as other structures, to make room for a courthouse annex and parking garage (*TA*, July / August 1975).

The current excitement in Harris County, or part of it, is the imminent publication of Volume One of a very ambitious "survey" of all of Houston's historic structures deemed worthy of saving, restoring, or at least remembering (should they be vanquished anyway). Conducted primarily by the Harris County Heritage Society, the research for this inventory was started about a year and a half ago under the guidance both of Peter Rippe, executive director of the Society, and Mrs. Ann Wilson, editor of the series (which will ultimately comprise four volumes).

### Shotgun Research

Phase one of the research embodied a "shotgun" method used by Rippe in the compilation of a similar document for Richmond, Virginia. Mrs. Williams gathered a crew of 30-odd members and friends of the Society, each armed with a camera, and dispatched them to various pre-selected districts around the city, where they snapped pictures of every building which looked to them like a candidate for survival. These "amateurs" provided a mixture of opinion and points of view which Mrs. Williams considered valuable to the project.

The first batch of photos was subsequently examined by the editors of the survey and by members of the Houston Chapter of AIA, including Jim Bishop, chairman of TSA's Historic Preservation Committee, to select the final prospects for publication. This amounted to 60 buildings in the downtown area—the subject of Volume One — out of 200 original candidates. Among the criteria which the



judges applied were "social, architectural, or historic" significance, with a general cut-off date of 1930. (All buildings in the downtown area constructed before 1900 were initially considered.)

Next came a spate of intensive research on the chosen buildings, digging through county tax records, historical archives, newspaper files — along with a second round of photos by a professional. The finished volume will include descriptions, sketches, and histories of the buildings laced with anecdotes and personal remembrances.

### Newfangled Elevator

One of the downtown veterans to be featured is the Kiam Building, a five-story structure erected in 1893 as a retail clothing store. It brought to Houston a whole string of architectural "firsts": tallest building in the city at the time; first building with an electric elevator (it was in fact the self-same revolutionary elevator displayed that year at the Chicago World's Fair); first design of the Sullivan-Richardson architectural style, which resulted from the fact that one of the three architects was Ollie Lorehn, a Scandinavian who had come to Houston direct from St. Louis, where he was supervising architect for the Anheiser-Busch Brewery — an historic example of the Sullivan-Richardson format. (Another of the architects on the Kiam project was George Dickey, who designed the Sweeney-Coombs-Fredericks Building.) The opening of the dry-goods store, with its newfangled elevator, must have been quite an event, as it drew a crowd of 17,000 the first day.

Aside from the charm and archival importance of the Heritage Society's inventory of buildings, it should meet a need which has long been voiced by officials and business interests faced with the question of where to build new office towers and such. If they know in advance which old structures are considered off-limits by historical preservationists, they can, should they be so inclined, avoid getting "invested" in the area to begin with. And if they do hopt to build on a given historic site, they will not have a claim to ignorance of the value of what they are destroying.

According to Mrs. Wilson, Volume One should be off the press in January or February, 1976. It has not been decided yet whether it will be in hardcover, softcover, or both, but persons interested in obtaining a copy should write to the Society at 1100 Bagby, Houston, Texas, 77002.

WHEN YOU DESIGN . . .

- \*RESTAURANTS
- \*CLUBS
- \*CAFETERIAS
- \*APARTMENTS
- \*HOSPITALS

SPECIFY THE BEST IN . . .

- \*ICE MAKERS
- \*ICE BINS
- \*SODA SYSTEMS
- \*LIQUOR SYSTEMS
- \*ICE DISPENSERS

Call or write



interstate distributors  
INCORPORATED



817 265-6226

710 Highway 360 North Arlington, Texas 76011

*memo: we've moved.*

*our new address is:*

*1639 Bissonnet, Houston, zip 005*

*Phone: (713) 529-5791*

*we make furniture.*

*we are into everything natural.*

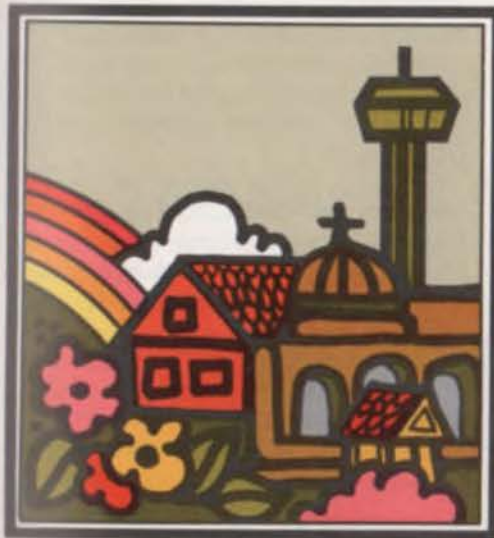
*we feel your orders for home or office  
are probably made faster and at  
a better price than anywhere around.*

*And now our services are under  
one roof.*

*so drop by or phone and let us show  
you what we can do.*

**Habitat**





# THE URBAN DESIGN GAMES

A public education project of  
SAN ANTONIO CITY EDGES

Unique role-playing games sponsored by San Antonio's Citizens for a Better Environment are attracting considerable attention as effective tools in public education related to land use and city planning.

Under the direction of Catherine H. Powell of Trinity University's Urban Studies Department, the citizens' group gathered voluminous data on factors which influence urban development in Bexar County, including existing and planned human development, and "city edges" — prominent physical features.

They then retained La Mancha Group, Inc. to put the data in a format that would appeal to laymen. La Mancha Group specializes in such work for non-profit organizations and is made up of public relations, graphic design, and business consulting specialists.

Said Mrs. Powell, "San Antonio City Edges wanted to equip ordinary citizens to make decisions on complex, far-reaching urban design and environmental problems, since commissions, study groups, and committees largely made up of lay people are charged with the responsibility for these decisions. The goal is to teach lay people *How To Make Decisions* . . . not *What* to decide . . . to remove urban design decisions from the arena of politics and emotions."

La Mancha Group designed four games for civic club use — The Parklands Game, The Subdivision Game, The Airport Game, and The Greenbelts Game (Copyright 1974, Citizens for a Better Environment, Inc., and La Mancha Group, Inc.) Each game represents an area of urban planning concern and simulates the decision-making process necessary in urban planning.

"They are role-playing games," said Mrs. Powell. "For example, in The Airport Game, you have to assume you are a member of a task force charged with the responsibility of locat-

ing a site for a new airport in Bexar County. You have to consider human development as well as environmental features of the land, and you have to consider the impact such a huge new facility would have on traffic patterns, water quality, noise, etc."

Each person in the audience receives a gameboard folder, colorful plastic map overlays, and an answer sheet. Following a moderator's instructions, he uses the map overlays on the gameboard over a base map and receives brief summaries of urban planning information from each overlay. This information is then used to answer questions on the answer sheet.

The Urban Design Games were awarded the "Best of Show Award" over 450 other entries in the San Antonio Advertising Federation's Addy Awards Competition and were a feature of the American Institute of Planning's national conference in San Antonio in October.

The overall concept works so well, said La Mancha Group spokesman, that the group is well along with projects to apply the game idea to other situations, including land use planning for the sensitive recharge zone of the Edwards Aquifer in Bexar County. Information on the games is available by phoning La Mancha Group at 214-691-7132 or 512-478-4619 or by writing P. O. Box 1832, Austin, Texas 78746.

## Know What Your Design Will Cost

Control your costs for construction projects. Establish budgets and compare systems at schematic, design development and final stages with complete cost estimates from:

## Quantity Survey Bureau, Inc.

call:

Henry B. Kerr  
Robert J. Smith  
William S. Hackney  
(713) 222-8328

2100 Travis  
Houston, Texas 77002



**A NEW SYSTEM  
AND SERVICE  
FROM  
INDUSTRIAL OFFICE SUPPLY  
FOR THE PROFESSIONAL  
IN THE  
FURNITURE INDUSTRY**

The IOS Contract Furniture Division is composed of a special group of individuals organized to render services to

- Interior Designers
- Architects
- Dealers

- 1 Purchasing:**
- 2 Receiving:**
- 3 Warehousing:**
- 4 Make Ready:**
- 5 Delivery/Installation:**
- 6 Provide Supplemental Technical Work To Overall Objectives:**
- 7 Research For Suitable Product:**

Quotation Upon Request



Contract Furniture Group  
1335 Oak Lawn, Dallas, Texas 75207  
(214) 748-7111 or 748-7177

# In the News

## Preservation PDP

TSA/PDP, with the help of the Galveston Historical Society, has scheduled AIA's "New Markets and Methods Forum: Townscape Conservation" from 9 a.m. until 5 p.m. on Friday, November 14th, at the historic Ashton Villa House Museum, located at 2328 Broadway in Galveston.

It is planned for architects interested in and/or involved in marketing, and for design and citizen groups interested in townscape conservation, historic preservation and community revitalization.

Instructor for the PDP is Ronald Lee Fleming, a planner who serves as executive director for Vision, Inc., in Cambridge, Massachusetts. Fleming, a widely known consultant/lecturer, attended Harvard Graduate School of Design. Instruction will consist of a careful balance of (1) lecture and slide-lecture, for providing both a framework for action and actual illustrations; (2) analysis of opportunities at the site of the program itself; (3) discussion for review of action plans to help architects develop strategies for actualizing community development; and (4) demonstrations, to provide a model of how to set developmental action into motion in a community.

An added feature of the program will be a walking tour, conducted by Peter Brink, Executive Director of the Galveston Historical Society, of The Strand and historic places in downtown Galveston. The building in which the program will be held, owned by the Galveston Historical Society, is recognized as the most prestigious and elaborate historical house in the city.

Registration fee of \$30 should be made payable to "TSA/PDP," and sent *now* to the TSA Office, 800 Perry-Brooks Building, Austin 78701. Hotel reservations may be made either downtown at the Jean LaFitte Hotel, 2105 Church Street, (713) 763-4301, or on the beach at the Flagship Hotel, 2501 Seawall Blvd., (713) 762-8681.

## A&M Honors Langford

The Texas A&M University Board of Regents has named the A&M architecture building and the adjacent major facility now under construction in honor of Professor Emeritus Ernest Langford, FAIA. The complex will be called the Ernest Langford Architectural Center.

Langford, 84, a 1913 A&M graduate,

joined the faculty as a professor in 1925 after six years of teaching at the University of Illinois. He was head of the Architecture Department from 1929 until 1956 and became university archivist in 1957, retiring in 1971.

Langford is the author of several historical documents, including, "The First Fifty Years of Architectural Education at the Agricultural and Mechanical College of Texas" and "Getting the College Underway."

Langford has been active in the Brazos Chapter of TSA and the community of College Station. He was elected to the first city council in 1938 and served as mayor from 1942 until 1965.

## Job Opening

Texas State Building Materials and Systems Testing Laboratory is seeking applications for a fulltime director. Headquartered in Austin, the Laboratory is operated by the Housing Division of the Texas Department of Community Affairs. Among the director's responsibilities, according to interim director Mary Ann Bernard, will be the coordination of research projects and liaison with a wide variety of persons and institutions in the fields of design and construction, including state and local officials. The position is a Grade 19, carrying a salary of \$18,500 to \$19,000. Address: P.O. Box 13166, Capitol Station, Austin, Texas 78711.

## Architecture for Justice

Richard W. Velde, administrator of the Federal Law Enforcement Assistance Administration, will be one of the speakers at the Conference on Architecture for the Justice System Nov. 16-18 in Washington, D.C.

The conference, sponsored by AIA, will take place at the Key Bridge Marriott Motor Hotel in Arlington, Va., just across the Potomac River from the Georgetown section of Washington.

Velde will discuss LEAA's programs and research and their relation to architectural planning. Other speakers include: Chief Judge Harold Greene, District of Columbia Superior Court; Fred Moyer, director of national programs for the National Clearing House for Criminal Justice at the University of Illinois; and Sam D. Starobin, director of the Department of General Services of the District of Columbia.



For further information, contact Mark Maves, Department of Environment and Design, AIA Headquarters, 1735 New York Ave. N.W., Washington, D.C. 20006. Telephone: 202-785-7300.

## News of Schools

The University of Texas at Arlington has named Robert H. Norris III to be director of professional affairs and career planning and placement at the university's School of Architecture and Design. Norris currently is vice chairman of the Texas Board of Architectural Examiners, to which he was appointed by the governor for a six-year term in 1971.

A team of five Texas Tech University architecture students—called OMNIAN, a contraction of "omni" and "man"—will produce plans for redevelopment of Window Rock, Arizona, the Navajo Capital/National Center of the Navajo Indian Nation, as a fifth-year thesis project. A three-week visit to the reservation, a concept statement, and alternative designs for government centers, residential areas, business areas, open spaces and gathering places are all part of the academic problem.

The University of Texas at Austin School of Architecture has been granted accreditation for both its undergraduate and graduate degrees by the National Architectural Accrediting Board. Formerly, only the undergraduate program was accredited. Now a student with a degree in another field can earn a fully accredited professional degree in three years, whereas the undergraduate program requires five years.

Walter A. Meisen, acting commissioner of the Public Building Service, will address the Texas A&M University College of Architecture and Environmental Design at 3 p.m. November 7 on the subject, "Who Really Does Design America?—Government's Responsibility to Design." Meisen has played a major role in the development of many GSA innovations such as construction management, project management, value management systems, building and phased construction. He directed the incorporation of energy conservation and high-rise fire safety features in recent GSA office buildings.



## Have a weekend affair.

The quiet drinks by candlelight. The sweet, unhurried walks beneath the moon. Where has it gone? Lost among the broken water heaters and crabgrass? Don't quit now — Hilton Inn's "Super Weekend" Package is all you need. Friday night's \$16.95 per person includes your room, celebration champagne and two drinks. Saturday night, a dollar less per person covers the room and a bottle of wine. (Tax included, tips not.) Hurry tiger — it's on a space available basis.

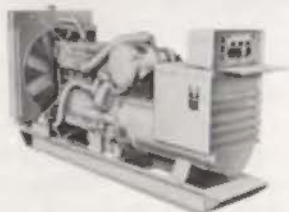
## DALLAS HILTON INN

5600 North Central Expressway  
at Mockingbird  
For reservations call (214) 827-4100

# THINK AHEAD!

design Cat power into your buildings

Don't let your clients get caught short in a power crisis. Not when there's a Caterpillar power unit matched to their needs . . . standby, dual service or prime on-site power. Let's talk . . . and see how Cat diesel or gas-fueled engines and generator sets may fit your future plans. There's no obligation!



**CATERPILLAR**  
DEALERS

Darr Equipment Co./Dallas • Longview • Waco • Wichita Falls • Texarkana  
B. D. Holt Co./Corpus Christi • Westaco • Brownsville • Victoria • Aransas Pass  
Holt Machinery Co./San Antonio • Austin  
Mustang Power Products, Inc./Houston • El Campo • Lufkin • Beaumont  
Treasner Equipment Co./Arlene • Odessa • Pecos  
West Texas Equipment/Amario • Lubbock  
Rust Tractor/El Paso • Albuquerque • Farmington • Hobbs

Caterpillar, Cat and Darr trademarks of Caterpillar Tractor Co.





ENGINEERS  
ARCHITECTS  
ARTISTS  
SUPPLIES

REPRODUCTION  
SPECIALISTS



**MILLER**  
BLUE PRINT CO.

501 WEST SIXTH ST.  
AUSTIN, TEXAS 78767  
PHONE 512/478-8793  
MAIL ADD. BOX 2065

## Concepts in Monumental Architectural Sculpture

Our professional services include creation, design, fabrication, installation and supervision in:

Cor-Ten Steel  
Stainless Steel  
Bronze

*We transform architect's ideas  
into reality . . . .*

**sculptors foundry  
and gallery**

13280 MURPHY ROAD • STAFFORD, TEXAS 77477  
TELEPHONE 713 / 499-4615

## Masonry Institute

The newly created Masonry Institute of Houston-Galveston will open its offices November 1.

The Institute was formed to increase the use of masonry construction among architects, engineers, developers and building owners. The new group's board of trustees is made up of masonry contractors and union officials from the Bricklayers, Masons, Plasterers International Union, Locals 1 and 7, from Houston and Galveston, respectively.

As a technical resource, the Institute will provide building decision-makers with cost comparison studies, specifications assistance, and code requirements, as well as masonry design alternatives.

Funding of the Institute comes from contributions based on bricklayers' hours.

The Board of Trustees has named Gregg Borchelt as its executive director. Borchelt has moved to Houston from Denver, Colorado, where he was Director of Engineering for Masonry Systems, International, a firm he had been with for five years. Previously, he had been with Dow Chemical. Borchelt holds a B.S. degree in Civil Engineering, as well as a Masters degree in Structural Engineering from Purdue University.

"Modern masonry is much more than bricks and mortar," Borchelt said. "New methods and materials are giving architects greater design flexibility. On top of that, you still can't beat masonry for going up faster, costing less to maintain and providing greater engineering efficiency. We invite building people to put us to work on their next project." The Masonry Institute of Houston-Galveston offices are located in the Halbouty Building, 5100 Westheimer, Houston, Texas 77027, phone number (713)629-6024. The Institute is affiliated with the International Masonry Institute.

## PCI Awards

The Houston firm of Caudill Rowlett Scott, and Dalton van Dijk, Johnson & Partners, of Cleveland, have been honored by the Prestressed Concrete Institute for the Edwin J. Thomas Performing Arts Hall at the University of Akron, Ohio. (See design award story in this issue). The project was one of twelve national winners in the awards program citing excellence in architectural and engineering design using precast and prestressed concrete.

**We definitely  
do not recommend  
this procedure.**



Mechanical fastening and joint taping had just been completed on this six-acre roof before work was suspended for six weeks due to rain and snow. The U.I.I. 100 GF panels did not absorb moisture or allow moisture to penetrate to the deck below. After a brief drying out period, work resumed, and the roofer did not have to replace a single panel. This example notwithstanding, we recommend that insulation be dried in each day after installation.

U.I.I. 100 GF roofing insulation panels combine a rigid core of closed-cell urethane foam with asphalt saturated, non-woven glass felt that is impervious to moisture.



Conserving Energy Through Better Insulation

**URETHANE**  
INDUSTRIES INC.

3626 Binz-Engelmann Road  
San Antonio, Texas 78219  
(512) 224-2741



## News of Firms

Richard P. Cate and Ramon Castillon, formerly partners in the Houston firm of Kendrick/Cate Associates, have announced the formation of a new partnership to be known as **Richard P. Cate/Ramon Castillon Associates**, to be located at 2420 B Rice Blvd., Houston.

Robert A. Ambrose has announced the establishment of a new firm, **Robert A. Ambrose, Architect**, at 5620 Greenbriar, Suite 105, Houston 77005.

James Falick has joined the **Klein Partnership**, in Houston, as a principal and Director of Health Facilities.

**Koetter Tharp & Cowell Architects & Planners, Inc.**, of Houston, has announced the change of its name to include that of B. Boykin Bartlett, who recently was elected executive vice president and a director. Martha J. Reisinger has been advanced to vice president for administration.

**Sam T. Middleton, Jr.** has announced the formation of his own firm. Mailing address: P.O. Box 12914, El Paso, 79912. Telephone: 915-584-2915.

The firm of **Rapp Fash Sundin, Incorporated, Architects & Planners**, has a new Houston address: Suite 150, 4710 Bellaire Blvd., Bellaire 77401. Telephone: 713-661-1751. It also has announced the promotion of John Simmonds to associate.

Paul Kennon has been named president and E. C. Kobs executive vice president and chief operations officer of **Caudill Rowlett Scott**, Houston-based firm with other offices in New York, Los Angeles and Beirut. Raymond H. Martin has been named senior vice president and E. Bruce Appling and Harold Ingram vice presidents. William A. Feathers has joined the firm as manager of business development.

The Dallas firm of **Envirodynamics, Inc.** has relocated to One NorthPark East, Suite 420, Dallas 75231. Telephone: 214-750-1945.

**Jack Corgan and Associates**, of Dallas, has announced the appointment of John L. Matloch as manager of Materials and Construction Methods Research and Specifications.

## Industry News

J. Ralph McLeod has been named sales manager of **Texas Vermiculite Company** following the retirement of R. B. Moran. The Dallas-based firm, an affiliate of W.R. Grace & Company, markets con-

struction and horticultural products including roof deck systems, fireproofing, insulation, and soil mixes and conditioners. R.M. Vining has been named president; H.A. Brown and B.R. Williams, vice presidents; and R.L. Junker assistant treasurer and assistant secretary.

Several key appointments have been announced for the Trinity division of **General Portland, Inc.**, according to James E. Scott, division general manager and vice president. Fred Koester has been named manager, cement operations; O. G. "Greg" Dagnan, Fort Worth plant manager; Martin A. Warborg, finance man-

ager of the division; and T. R. Hume, general manager of fly ash operations. General Portland, headquartered in Dallas, operates nine cement plants throughout the Southwest, Midwest, Southeast, and in Southern California.

**Acme Brick Company** has announced the availability of a brochure which outlines the results of a study by the Texas State Building Materials and Systems Testing Laboratory which compares the relative economic merits of brick and glass as building materials. To obtain a copy, write: Acme Brick, P.O. Box 425, Fort Worth 76101.

# ARCHITECT'S HOT-LINE

TOLL  
FREE!  
PHONE  
NOW!

800  
492-6766



**JUST RELEASED: AN ARCHITECT'S GUIDE TO ROACH PAINTS AND DRY-WALL.** This is a reference book packed with information in an indexed loose-leaf binder of durable vinyl — a complete education in paints and drywall, and it's yours for the asking. Just phone the HOT LINE number and tell the operator it's a HOT LINE call.

There's a ROACH PAINT STORE near you. DALLAS: **Richardson Paint Center**, 314 Spanish Village; **Oak Cliff**, 527 Golden Triangle Shopping Center; **Grove**, 8726 Lake June Road; **Casa Linda**, 346 Casa Linda Plaza; **Preston Forest**, 1418 Preston Forest Square. IRVING: **Plymouth Park Paints**, 237 Plymouth Park Shopping Center. ARLINGTON: 1721 East Abrams. GARLAND: 823 W. Garland Avenue. RICHLAND HILLS: 7811 Grapevine Highway. FORT WORTH: **Rosedale**, 1201 S. Riverside Drive; **Wedgwood**, 5274 Trail Lake Drive. PLANO: 1170 Park Blvd., Park Mall Center. OKLAHOMA CITY: 3118 North May Avenue. TYLER: 1625 West Front. WACO: 3300 Franklin. AUSTIN: 8605 Burnet Road. SAN ANTONIO: 415 West Rhapsody. HOUSTON: **Bellaire**, 5822 Bissonnet; **Airline**, 7201 Airline Road.

# Roach

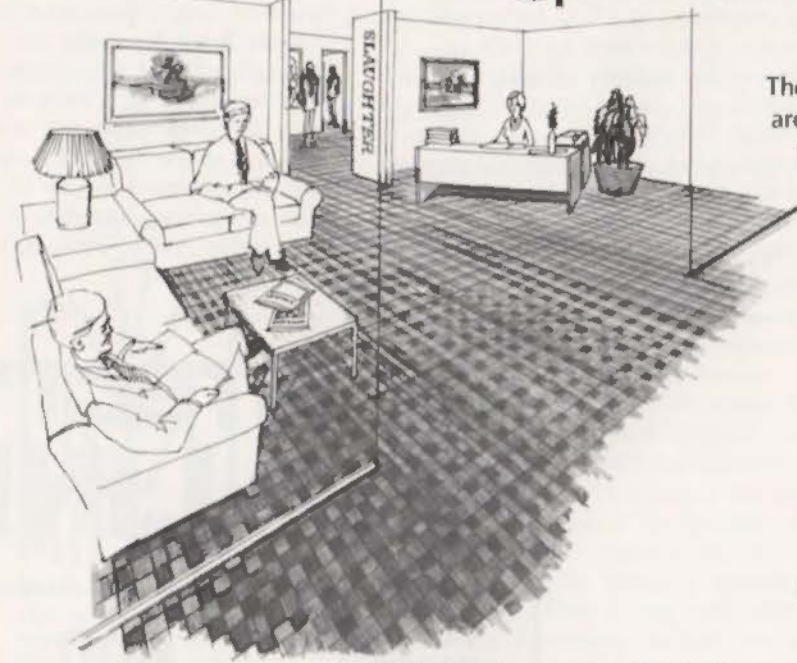
**PAINT COMPANY, INC.**

SINCE 1934

Phone (214) 748-9421 • 1306 River Street  
DALLAS, TEXAS 75202



# *Karastan* Carpet for the professional specifier



The ultimate in carpet for heavy traffic areas... Karastan... carpet specified for the Corporate Offices of Slaughter Brothers, Inc., by  
**Marguerite Green, ASID**  
**Marguerite Green Interiors, Inc.**



**reiser and associates**  
carpets for the professional specifier

Suite 116, Oak Lawn Plaza, 1444 Oak Lawn Ave., Dallas, Texas 75207. (214) 741-1861

## AIA DOCUMENTS AND SELECTED BOOKS

IMMEDIATE DELIVERY  
AT 20% DISCOUNT TO  
TSA MEMBERS

TSA DOCUMENTS  
800 PERRY-BROOKS BLDG.  
AUSTIN, TEXAS 78701  
(512) 478-7386





### Lady Bird Awards

Standing before invited guests at the LBJ State Park amphitheater September 18th, Mrs. Lyndon B. Johnson wrote a \$1000 check to Dwain Rogers of Anson and a \$500 check to Clay Jameson of Matador, top winners in the sixth annual Lady Bird Johnson Highway Awards Program.

Rogers and Jameson, both maintenance construction supervisors, were cited for their efforts to beautify Texas highways and roadways in their respective districts.

Pictured above with Mrs. Johnson following the ceremony are winner Rogers, left; TSA Executive Director Des Taylor, and TSA President Dave Braden.

# ECONOMICAL AND FAST CONSTRUCTION

## With Precast Structural Systems from Wolco

Custom and standard double tees, single tees, cored planks, inverted tee beams, L beams, rectangular beams and columns allow the architect and engineer wide latitude in design of simple or fancy structures. Controlled conditions in our plant assure rigid adherence to specifications. Delivery to jobsite as required reduces storage area requirements when this is a problem.

Wolco will work with you to express your ideas and individuality—from design to topping out. Just call us and we will supply the technical and practical assistance you desire.

*Serving the area within 250 miles of San Antonio.*



P.O. Box 21146 • Tel. (512)924-4471  
San Antonio, Texas 78221





## New Federal Form

TSA has received notice that Standard Form 251, submitted to federal contracting agencies by architectural firms desiring federal work, has been replaced by a new document, Standard Form 254.

The form may be obtained from General Services Administration, Region 7, 819 Taylor Street, Fort Worth 76102, Attn. 7PCA.

## Austin Activity

Two Austin chapter members recently have become involved in significant organizations headquartered in Austin. **Bob Coffee**, of the firm of Coffee & Crier, has been elected president of the Texas Old Missions and Forts Restoration Association. **Bronson Dorsey**, of Brooks Barr Graeber & White, has been appointed by Mayor Jeff Friedman and the City Council to the Austin Arts Council.

## Dallas Awards

The Dallas Chapter of AIA recently announced the winners of its annual design awards competition. From a field of 62 entries, 12 architectural firms were presented 18 awards in three categories—honor awards, merit awards and citations.

Four architecture firms were presented honor awards for which they received extruded aluminum statues. The honor award winners were The Oglesby Group, Inc. for an addition to a Dallas residence, Omniplan Architects, Harrell + Hamilton for the Citizens Bank and Office Tower in Richardson, Thomas, Booziotis & Associates for the Arlington Family YMCA, and Harwood K. Smith &

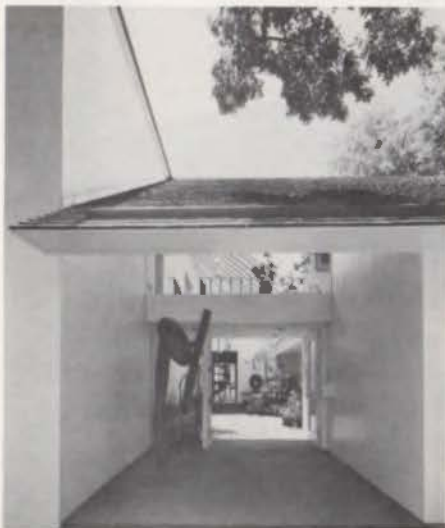


*Citizens Bank and Office Tower*



*Arlington Family YMCA*

Partners for the Teaching Auditorium at the University of Texas Southwestern Medical School in Dallas.



*Addition to Dallas residence*



ARCHITECTS, CONTRACTORS, BUILDING OWNERS,  
BUILDING MANAGERS, AND PLANT MANAGERS  
ALL AGREE — IF THE PROBLEM IS WATERPROOFING  
WE ARE THE COMPANY THEY CAN RELY ON.  
"THE MOISTURE CONTROL EXPERTS" SINCE 1915

**WESTERN**  
ATERPROOFING CO. INC.

5209 S. RICE HOUSTON, 77036 (713) 666-1894

2660 FREEWOOD DR. DALLAS, 75220 (214) 357-8164





*Teaching Auditorium,  
UT Southwestern Medical School*

Merit award winners included Beran & Shelmire for the Forney Engineering Company in Addison, Duane Landry, Architect for the Dallas residence of Mr. and Mrs. William C. Block, the Oglesby Group, Inc. for the H. Ben Dechard Center for the Performing Arts at St. Marks School in Dallas, Omniplan Architects, Harrell + Hamilton for the NorthPark Shopping Center Expansion in Dallas, and the Pierce, Lacey Partnership, Inc. for the Resort Lodge at Lake Livingston.

Citations were awarded to ANPH, Inc. for the Frank Parra Chevrolet Dealership in Irving and for the Tanbark Row/Woodridge Condominiums in Dallas, Architectonics, Inc. for the Crossroads Shopping Center in Oklahoma City, The Architects Partnership for the Horseshoe Bay Resort at Lake Lyndon B. Johnson, Fisher and Spillman Architects, Inc. for their Dallas architectural office, Greener and Sumner Architects, Inc. for the Public Library in Crockett, The Oglesby Group, Inc. for the pre-school facility at Greenhill School in Dallas, the Pierce, Lacey Partnership, Inc. for the corporate headquarters of First Federal Savings and Loan in Dallas, and Harwood K. Smith & Partners, Inc. for the parking Garage at Baylor University Medical School in Dallas.

The jurors were Robert Marquis of Marquis Associates of San Francisco, a firm that itself has won more than 46 design awards, Anthony Lumsden, vice president and director of design of Daniel, Mann, Johnson and Mendenhall of Los Angeles, one of the country's largest architecture firms, and Clovis Heimsath of Clovis Heimsath Associates of Houston, a former Fullbright scholar and author of "Pioneer Texas Buildings."



Lighting by TSAO

Outstanding designs in  
contemporary lighting



**EDMUND KIRK ASSOCIATES**

604 Oak Lawn Plaza  
Dallas, Texas 75207  
Phone (214) 744-0696



# STRONGWALL GRABS MORTAR AND HOLDS ON!

**MIDSTATES** Ladder Type Strongwall masonry reinforcing provides three times the grab of ordinary masonry reinforcing. Here's how:

- Knurled side rods bite into mortar. 12 indentions per inch gives greater mortar to metal contact for sure bond.
- Ladder type Strongwall features  $\frac{1}{8}$  inch extension of cross bar beyond the side bars. This slight, but important improvement causes stresses to be more evenly distributed.
- Strongwall's wire elements exceed 90,000 P.S.I. tensile strength. And that's *guaranteed* so you can use Strongwall with complete confidence.

Ladder Type Strongwall features completely galvanized side rods at no extra cost. And to save you time on the job and dollars in transit, Strongwall is palletized and packaged with patented corrugated "boots" that protect the Strongwall and your men, too.

Get complete specifications on both Truss and Ladder type reinforcing by writing today for your FREE copy of the Strongwall Brochure.



Strongwall Truss Type Reinforcing  
Also Available.

**MIDSTATES WIRE**  
**STRONGWALL**

MidSTATES STEEL & WIRE / Sherman, Texas 75091  
Division of Keystone Consolidated Industries, Inc.





STEWART OFFICE SUPPLY CO.

TEXAS' LEADING CONTRACT DEALER  
FOR COMMERCIAL INTERIORS

Offering these full services

to the Professional:

Procurement & Expediting

Showroom Facilities

Delivery/Installation

Continuing Service

Product Research

Survey Analysis

Warehousing

Make-Ready

Budgeting

Receiving

Authorized  
dealer for the  
following  
manufacturers:

GF  
Herman Miller  
Knoll  
Lehigh-Leopold  
Stow/Davis  
Kittinger  
Gunlocke  
Harwood House  
Probbler  
Jens Risom

... plus many others

Showrooms: 401 So. Lamar • Dallas

  
SINCE 1912  
Stewart's

400 So. Austin • Dallas 75202

214/747-8581

## Letters

**Editor:** I would like to comment on the article in the September-October 1975 issue entitled "Inspirations and Allusions."

I have never met Mr. Martin Price of New York and if I ever have the opportunity, I'm sure he will prove to be a very nice person. His comments in your magazine indicate that at the very least he is nice. He said some *nice* things, *but* . . . if this is the kind of weakkneed overstatement of the obvious malarky that the students of architecture in Texas are being cloaked in, then Mies van der Rohe is wrong and less would be better.

When I think that my money, both as a tax payer and a member of the Texas Society of Architects, supports three very thick pages of nothing comments, I am just totally frustrated. Allow me to quote from the article: "To design a building that is poetic . . . starts with sensitively choosing its position . . . and continues . . . with the routing of . . . driving patterns . . . through the structure." What in hell is poetic about driving through a structure? To quote further: "Again, as in the pioneer structures, vertical circulation occurs on the exterior of some of the projects." In plain English, they have got steps on the outside of the building and of the four examples shown of those wonderful early Texas structures, only one has an exterior stair. Mr. Price's comparison of these gargantuan 3-4 story multi-block dee-zines to the marvelous simple early structures noted for their human scale is nothing short of preposterous.

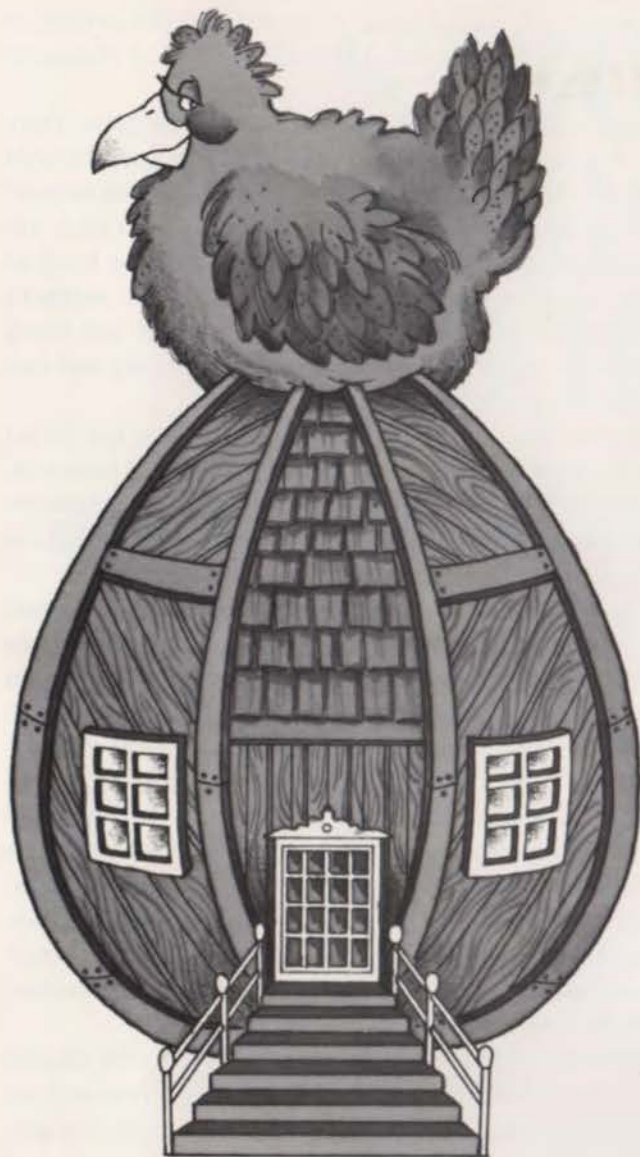
I think both the students and Mr. Price should learn the difference between something plain and artistic simplicity, the difference between bold and garish, and the fact that saying something is so doesn't make it that way, New York or no New York.

Arthur J. Rogers  
Arthur Rogers Associates  
Houston

**Editor:** The "Profile" on Hugh McMath in the September-October *Texas Architect* was very interesting. Because of our friendship with, and admiration for, the McMaths, Mrs. Greenhill and I particularly enjoyed it.

Our paths into architecture were parallel. I studied pre-architecture courses in high school in Houston in the early thirty's, and had hopes and intentions of being an architect. But I got summer jobs in the geology and geophysical department of Humble during the summers and observed honor graduates of the Rice architectural department copying pipeline routes and topographical maps "for peanuts." It was





**However Unique,  
Coerver can custom  
craft it for you!  
Architectural Woodwork.  
Elevator Cabs.  
Wall Coverings.**



**COERVER INDUSTRIES, INC.**  
3311 ELM STREET / DALLAS, TEXAS 75226  
(214) 744-5211 / TEXAS WATS 1-800-492-4266

indeed discouraging for them, and it rubbed off on me. So I ultimately backed into law school.

The Texas Society of Architect is nice to send me their magazine. As indicated, I do read and enjoy it.

Joe R. Greenhill  
Chief Justice  
The Supreme Court of Texas

**Editor:** I just received my copy of the September/October *Texas Architect*.

The article on the Old Cotton Exchange Building was great. Please convey a "job well done" to all of the persons responsible for the entire issue. It was a super nice product.

Graham B. Luhn, Architect  
Houston

**Editor:** I wish to compliment you on the September/October issue of *Texas Architect*. I found it not only impressive to look at, but very interesting to read.

Albert S. Goleman, FAIA  
Houston



# The TECH-TONE® Court built by bob evans.



Design and construction by bob evans & company  
and Tech-Tone System tennis court materials by  
Allied Chemical.

All-weather acrylic surface. Unique\* Cushion  
System. Beautiful color. Superlative playability. Opti-  
mized, controlled resilience.

Now add matchless durability and low cost.

The Tech-Tone Court. By bob evans.

If you need a multi-court complex or one doubles  
court, Allied Chemical and bob evans & company  
can put together an unbeatable package for you.  
Indoors or outdoors. Cushioned or not. New construc-  
tion or resurfacing . . .

Look to bob evans & company. Look to Tech-Tone  
materials.

\*Patent applied for

® Registered trademark of Allied Chemical Corporation

**bob evans & company** • 11181 harry hines •  
suite 144, dallas, texas 75229 • tel: 214-241-7118

 **Allied  
Chemical**



**Texas  
Architect**

800 PERRY-BROOKS BLDG  
AUSTIN, TEXAS 78701

BULK RATE  
U.S. POSTAGE  
**PAID**  
AUSTIN, TEXAS  
PERMIT NO. 2772

[Redacted]  
2  
210 W. 6th  
Austin, Texas 78701

# Olympic.

## Four guaranteed solutions to paint failure.



### Texas Distributors

#### AUSTIN

Calco Home Centers  
701 West Fifth St.  
12636 Research Hwy 183  
4607 Burleson Rd.  
6926 North Lamar

#### CORPUS CHRISTI

Corpus Christi Brick and Lumber Co.  
121 North Staples

#### DALLAS

Texas Paint and Wallpaper  
1504 Buckner  
1724 South Ewing  
217 Preston Valley Center  
4225 Ross

#### HOUSTON

Atlas Paint Company  
2330 Wirtcrest

#### FORT WORTH

W. J. Hancock Paint and Wallpaper  
902 West Magnolia  
3214 Camp Bowie Blvd.  
3200 Race St.  
2027 North Main  
1008 Miller St.  
1213 Jacksboro Highway  
Arlington  
1303 E. Abram  
Hurst  
521 Bedord Eules Rd. West

#### LUFKIN

Slaughter Paints  
907 Pershing

#### SAN ANTONIO

J. C. Jones Paint Co.  
1414 Fredericksburg Rd.

#### TYLER

Exum Co.  
Troup Highway

#### WACO

Waco Paint Center  
3703 Franklin

#### WICHITA FALLS

Norris Brothers Lumber Co.  
3400 Holliday Rd.