



TEXAS ARCHITECT

NOVEMBER 1962



Blumcraft

ADJUSTABLE ANCHORING SYSTEMS

SOLVES PROBLEMS OF SECURING RAILINGS TO CONCRETE BY BECOMING AN INTEGRAL PART OF THE STAIR STRUCTURE

- INSURES EXTREME RIGIDITY
- REDUCES COSTLY FIELD LABOR
- ELIMINATES BREAKAGE IN MASONRY
- ADJUSTABLE FOR POST ALIGNMENT

 *Blumcraft* OF PITTSBURGH

GENERAL CATALOG OF COMPLETE BLUMCRAFT LINE AVAILABLE ON REQUEST
COPYRIGHT 1962 BY BLUMCRAFT OF PITTSBURGH • 460 MELWOOD STREET, PITTSBURGH 13, PENNSYLVANIA

THERE'S A NEW LOOK IN TEXAS

AND THE CREDIT BELONGS TO THE ARCHITECT

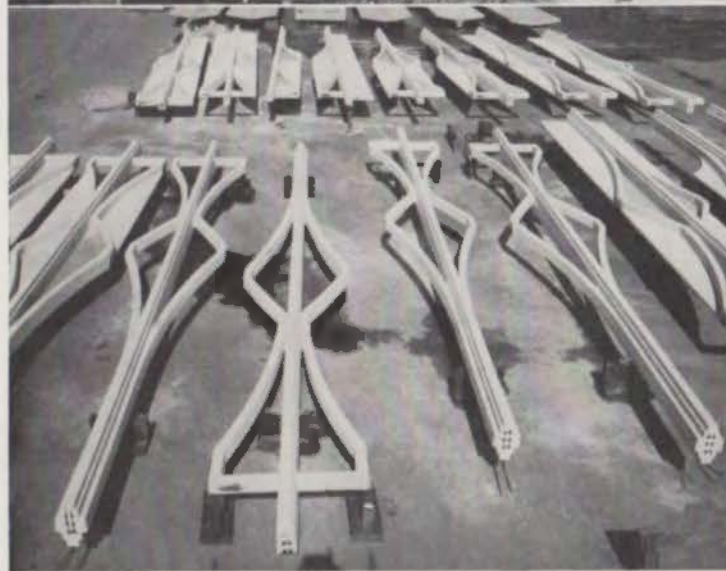
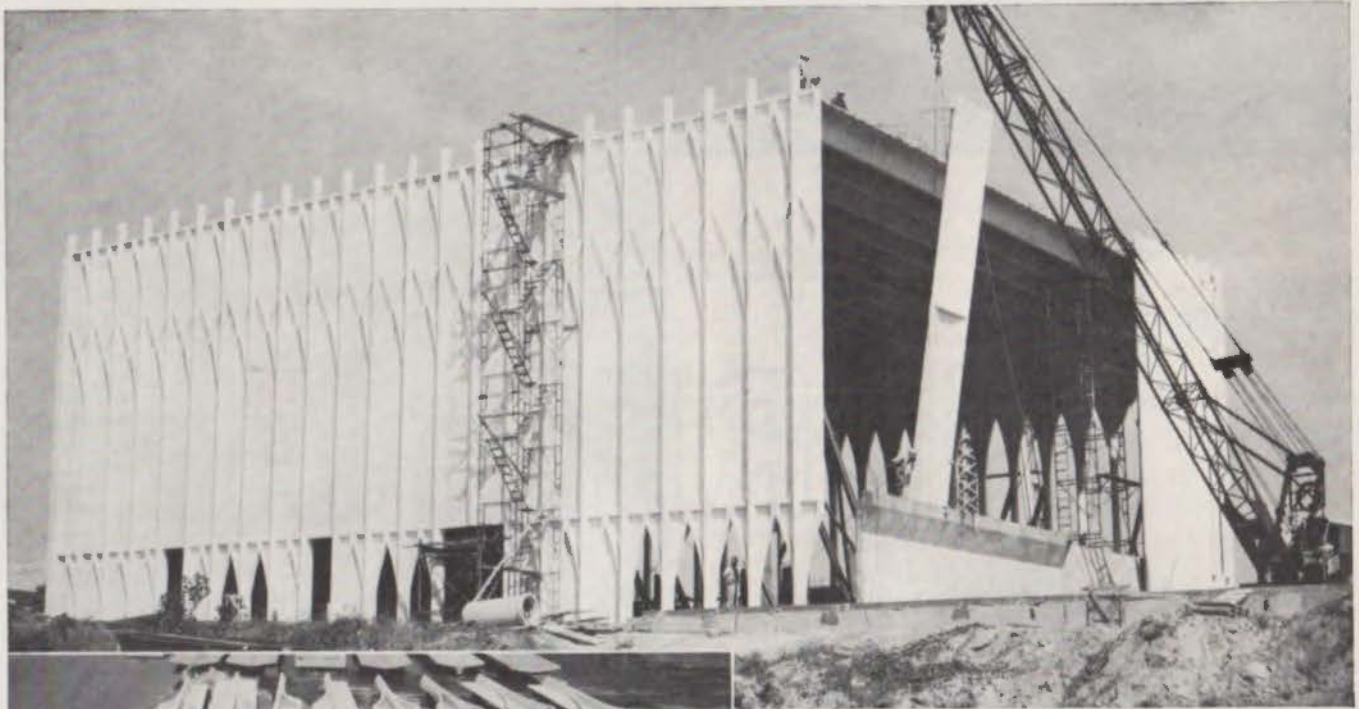
The changing skylines, the new designs in commercial structures and the appearances of today's homes are part of this new look in Texas. The credit belongs to the Texas Architect who is designing for the future as well as the present.

*Assisting the Architect
with better building materials —*

BLACK-BROLLIER

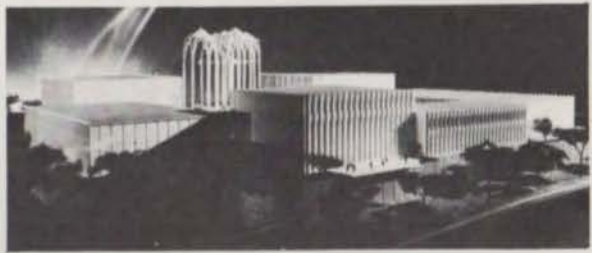
3010 DIXIE DRIVE — HOUSTON — RIVERSIDE 7-7100





ABOVE: Swinging the panels into place
LEFT: The prestressed components
BELOW: Model of Science complex when finished

Architects: Minoru Yamasaki & Associates, Detroit
 Naramore, Bain, Brady & Johanson, Seattle
Precast Concrete Units: Associated Sand & Gravel, Inc.,
 Everett, Washington
Engineers: Worthington, Skilling, Helle & Jackson, Seattle



...wherever concrete must be beautiful

The United States Science Pavillion is one of two principal theme buildings of the Seattle World's Fair. After the Fair it becomes the city's cultural center.

The load-bearing S-type stud wall panels are 32 and 52 feet long. They are faced with Trinity White portland cement and white quartzite aggregate. They are prestressed. The high strength

of Trinity White and the high-early-strength gray cement back-up permitted the forms to be stripped in 12 to 14 hours with steam curing. Panels are secured in place by either welding or bolting.

Problems of repeated turning, handling and transporting these massive members were neatly and ingeniously solved with specially outfitted lift trucks.

use **Trinity White**

A product of GENERAL PORTLAND CEMENT COMPANY



Offices: Chicago, Illinois • Chattanooga, Tennessee • Dallas, Texas
 Fort Worth, Texas • Houston, Texas
 Fredonia, Kansas • Fort Wayne, Indiana
 Jackson, Michigan • Tampa, Florida
 Miami, Florida • Los Angeles, California

Official Publication of

THE TEXAS SOCIETY OF ARCHITECTS

The Texas Regional Organization of
The American Institute of Architects
Don Edward Legge, A.I.A., Editor
John G. Flowers, Jr., Managing Editor
327 Perry-Brooks Building, Austin, Texas

Published monthly by the Texas Society of Architects
in Austin. Subscription price, 50c per year, in
advance. Copyrighted 1951 by the T.S.A., and title
registration applied for with the U. S. Patent Office.

Editorial contributions, correspondence, and ad-
vertising invited by the Editor. Due to the nature
of the publication, editorial contributions cannot
be purchased. Publisher gives permission for re-
production of all or part of editorial material
herein, and requests publication credit be given
THE TEXAS ARCHITECT, and author of material
when indicated. Publications which normally pay
for editorial material are requested to give con-
sideration to the author of reproduced by-lined
feature material.

Appearance of names and pictures of products
and services in either editorial copy or advertis-
ing does not constitute an endorsement of same
by either the Texas Society of Architects or the
American Institute of Architects.

TEXAS ARCHITECTURAL FOUNDATION
327 Perry - Brooks Building, Austin, Texas

TSA OFFICERS FOR 1962

- Reginald Roberts.....Regional Director
- Harold E. Calhoun, F.A.I.A.....President
- Arthur Fahr, F.A.I.A.....President Elect
- Walter C. Bowman.....Vice President
- Robert L. Peters.....Vice President
- George F. Pierce, Jr., F.A.I.A.....Vice President
- Victor G. Probst.....Secretary-Treasurer
- L. W. Pitts, F.A.I.A.....Past President
- Fred J. MacKie, Jr., F.A.I.A.....President,
Texas Architectural Foundation
- John G. Flowers, Jr.....Executive Director

TSA DIRECTORS FOR 1962

- Abilene Chapter.....Woodlief F. Brown
- Brazos Chapter.....Theo R. Holleman
- Central Texas Chapter.....George M. Page
- Coastal Bend Chapter.....Robert J. Beasley
- Dallas Chapter.....George F. Harrell
- El Paso Chapter.....Louis Daeuble, Jr.
- Ft. Worth Chapter.....Joseph J. Patterson
- Houston Chapter.....Mace Tungate
- L.R.G.V. Chapter.....Zeb Rike
- Lubbock Chapter.....John S. Stuart
- North Texas Chapter.....Paul J. Pond, Jr.
- North East Chapter.....O. L. Hazelwood
- Panhandle Chapter.....John S. Ward, Jr.
- San Antonio Chapter.....Harvey V. Marmon, Jr.
- South East Texas Chapter
.....Douglas E. Steinman, Jr.
- West Texas Chapter.....Walter L. Norris

The President's Letter

HAROLD CALHOUN, FAIA

President
Texas Society of Architects



The story is told that a pair of Druids looking up at the giant cross-beam laid across two rough columns asked, "I wonder how we got that up there?" Perhaps a more pertinent question today might be: "I wonder why we put that up there?"

In our present environment of technological excellence, all things seem to be possible but there are few who have the temerity to ask "Why?" Is it because automation, computers and group dynamics are leveling our initiative to mediocrity? Are the great individualists becoming extinct? Are we shifting from individual responsibility and freedom to group responsibility and dependence? There seems to be a tendency to seek security rather than opportunity. Sociologists tell us that the young man of today does not want to risk getting to the top, but rather heads for a nice, secure position somewhere in the middle, upper middle perhaps, but still middle. And the middle is getting bigger all the time. Differences in status are being decreased. Our clothes, automobiles, homes, schools, offices, etc., are more and more being cut from the same pattern.

The great artists of the past, which includes architects, used technological improvements as a lever to extricate themselves from the shackles of conformity. They risked security in order to find freedom of expression. They had the courage to be curious. They faced the question "Why?" What should they choose to work on? How should they allocate their energy and skill? What was worthwhile and what was not? It seems to me that these decisions are still paramount. Perhaps the direction of choice depends more upon our values, rather than upon stark necessity.

Harold Calhoun

DE NOVO

Texans have an opportunity in the general election on November 6 to completely destroy local government in Texas. All it takes is the passage of Amendment Number 14, known as the "Trial De Novo Amendment."

Under the provision of this proposal the Legislature would be allowed to provide for "*appeals from any and all actions, rulings or decisions of administration agencies and executive departments of the State of Texas or any of its political subdivisions,*" and to provide that "*such appeals be tried completely de novo and independent of any executive action*" — and to require the courts to determine these — "*even though such action on the part of the courts involves administrative or executive rather than judicial powers; . . .*"

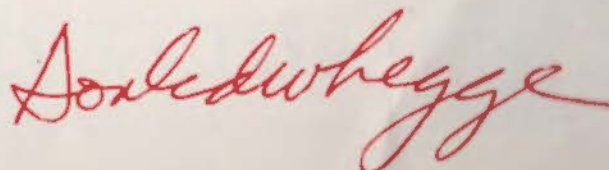
This amendment would effectively destroy in Texas the concept of "separation of powers" — the division of powers among the three branches of government, legislative, executive, and judicial — which forms the basis of the system of checks of balances which has made the American system of government so admired. This provision has been in every Texas constitution since the birth of the Republic. There is no question that it is essential to our form of government. Secondly, in providing for "trial de novo" of appeals, which means literally, "start anew", the amendment would strip every governmental level, state, county and local, executive and administrative, of all effective power to function. Any city, school district, hospital district, state licensing board, county commission would be subject to direct appeal to the court, with the burden on that governmental body to prove that its decision was appropriate.

This procedure is directly contrary to procedures in use since 1836 in which the "burden of proof" rests on the one attacking the decision. For instance, if an appeal is made concerning a municipal ordinance, the court must assume its validity and may not interfere unless *clear abuse* of municipal discretion is demonstrated. "De Novo" reverses this. Under Amendment 14, the city would have to prove that its ordinance was valid and proper. Additionally, the city could not enforce the ordinance as long as it was on appeal, perhaps three or four years.

Think what this would mean in this case of purchasing or building contracts; to highway construction; to the operation of hospitals and schools; the sale of public bonds. Government in Texas would come to a virtual standstill. Any executive or administrative proceeding would be a meaningless sham. The courts will be your school board, your zoning commission, your city council!

The concept of government set forth in the Amendment Number 14 is contrary to every principal of democratic government known to the American people.

Amendment Number 14 should be soundly defeated.





**new
beauty with
concrete
masonry**

One of the most exciting things in the field of construction materials is the current blossoming of concrete block into a whole new range of shapes, colors and textures.

Used not so long ago primarily for economy rather than glamor, concrete block has now come into its own as a beautiful and distinctive material appropriate for many kinds of prestige structures including homes. Along with the development of new types of block, architects and builders are discovering a variety of ways to use both new and traditional units to form walls of exceptional interest and beauty.

Split Block and Slump Block

One of the most widely used of the new generation of block is a solid unit called split block. The name derives from the manufacturing process, in which units varying in height and length but generally 8 inches in thickness are split in half to give a 4 in. thick facing block. The rough side is used out. Some split block is gray, but frequently integral coloring is added to produce units in shades of red, yellow, buff or brown. With its rough surface and natural hues, split block resembles stone. It requires little if any maintenance, and contrasts well with standard block and other materials.

Another favorite among the newcomers is slump block, a solid unit resembling adobe or weathered stone in appearance. The consistency of the concrete mix allows the block to slump slightly when removed from the mold, giving it an irregular appearance as though hand-molded. Like split block, slump block is generally integrally colored. It is a natural for homes, fireplaces, and garden walls. Unusual textures and colors can easily be created through the use of varied and unique aggregates.

Shadowal and Hi-Lite Block

Patterned block of several varieties are now being widely produced. *Shadowal* is the trade name given to units with a diagonal recessed section at one or both ends of the face. By placing four of these units together, a diamond-shaped pattern can be formed. Many other combinations are possible, supporting the enthusiastic description sometimes given it of the "block with a thousand faces."

Block with pyramidal-shaped projections are also on the market under the name *Hi-Lite*. Some units have one-half a pyramid, others two halves. Numerous ways of laying up the block can result in quite different patterns.

Other similar types of block are being produced for special architectural effects.

Color and Special Finishes

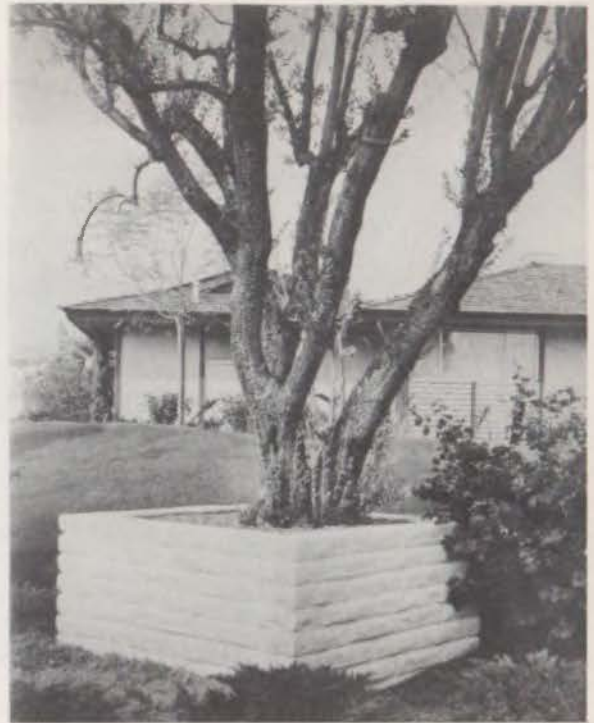
The strong appeal of color has led to a number of new types of masonry units in which special facing is bonded to the block. One of these is made with a thermo-setting resinous binder and glass silica sand, giving a smooth-faced block in solid colors. Block with a marbled finish is being produced by another manufacturer. A third type has a vitreous glazed surface that is extremely durable.

Using quite a different technique, a smooth glass-like facing of concrete can be imparted to block by means of plastic form liners. These liners are a recent development offering great potentialities. Almost any design conceivable can be executed with these liners, which are re-usable. In addition to plastic, form liners of rubber are also available; these impart a striated, barklike texture to concrete. When form liners are used, the concrete facing is almost always integrally colored.

Very beautiful block has been made with special aggregate. The face is sometimes ground smooth for a terrazzo-like finish, or the aggregate left exposed for rough texture. Recently, a manufacturer announced development of a special synthetic aggregate produced in many colors, which will be marketed under the name *Irridestone*.

Grille Block

Some of the most attractive of the new concrete units are the various patterns of grille block. In addition to their decorative value, they are proving especially practical for screen walls both indoors and out. With these perforated units it is possible to have shelter from wind, sun and light, without cutting out ventilation and a view. Designs range from simple squares and oblongs to intricate patterns of lacelike circles, diamonds, triangles and webs. The units are generally 4 or 6 in. thick, with face dimensions of 12 by 12 to 18 inches, and in weight are considerably lighter than conventional block.



The recurrent interest in grilles of this variety is generally credited to Architect Edward D. Stone, who used them so effectively in buildings he designed for the U. S. Embassy in New Dehli, the Stuart Company in Pasadena, and others. The potentialities of grille block for curtain walls are becoming recognized, as cost figures for air-conditioning in summer and heating in winter are shown to be lower when glass areas are protected. Partitions in offices, motel balconies, walls to enclose parking lots, and garden walls are being constructed today of grille block, and the list of users is growing.

New Patterns with Block

Part of the growing interest in concrete masonry is due to fresh ways of using it. Standard 8x8x16-in. units acquire a new look when laid in stacked bond or basket weave, when recessed or projected, when special treatment is given to joints, or the units are grooved. A greater variety of sizes and shapes and custom design suggest new arrangements and combinations.

Block can be laid on its side with the open cores creating a grille wall. Open spaces may be left between units in a row to produce a similar effect. Walls with unusual surface patterns have been laid using pilaster block, thin solid units, block placed endwise, and so forth, and each new design that appears seems to stimulate still further creativity in this area.

Along with the growing variety of types, there has been continued research to improve the quality of concrete masonry. When the practical aspects of fire-resistance, strength, and good acoustical properties are considered, it is not surprising that the future for this building material looks bright.



Precision - AUTOCLAVED

Concrete Masonry Units

MANUFACTURED IN AUSTIN

BY

BOHLS BLOCK CO.

2303 East 6th Street

GR 2-1172



ARCHITECT / SCULPTOR

A good design is a good design, whatever form it may take; and a good designer is apparently a good designer in whatever medium he chooses to work.

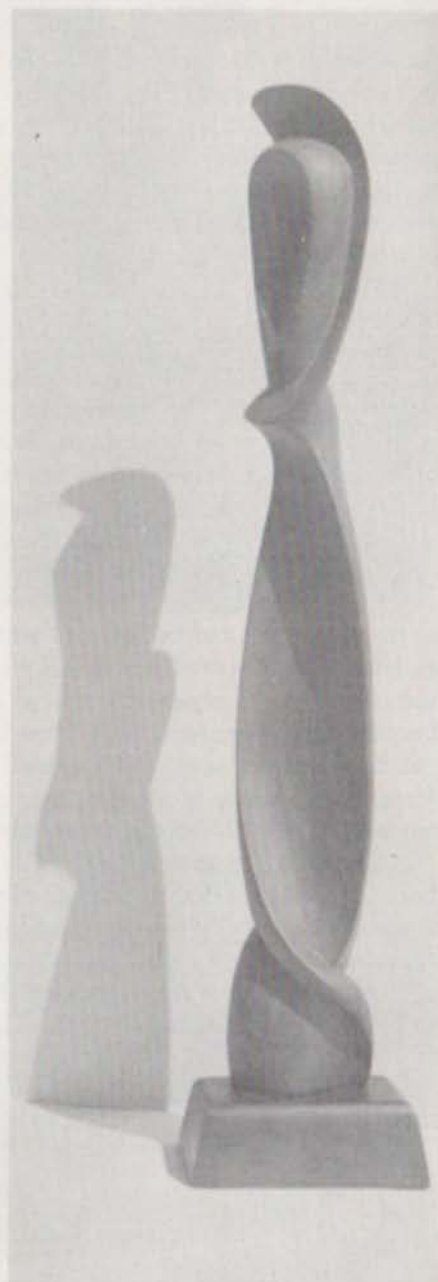
Dallas architect, Max Sandfield, who started wood sculpting strictly for relaxation, has gained recognition in this art form as well as that of architecture.

Although he has had no formal training in sculpture, the same talents and sensitivity necessary to produce a good work of sculpture are necessary to produce a good building. And the quality and successful integration of form, balance, rhythm, color, texture and movement are criteria for judging both of these three-dimensional arts.

Sandfield received an award for his first work, the "Monk," exhibited in 1959 in the Dallas Painting and Sculpture show at the Dallas Museum of Fine Arts.

He has exhibited in the Texas Painting and Sculpture show at the Dallas Museum of Fine Arts during the Texas State Fair, at the Everts' annual "Business Men in Art" show, and at museums in San Antonio, Houston, Beaumont and Lubbock.

In the fall of 1961, one of Sandfield's entries to the Southwest American Art exhibition at the Oklahoma Art Center in Oklahoma City was accepted. Exhibitors for this show are chosen on a competitive basis from submissions from eight states.



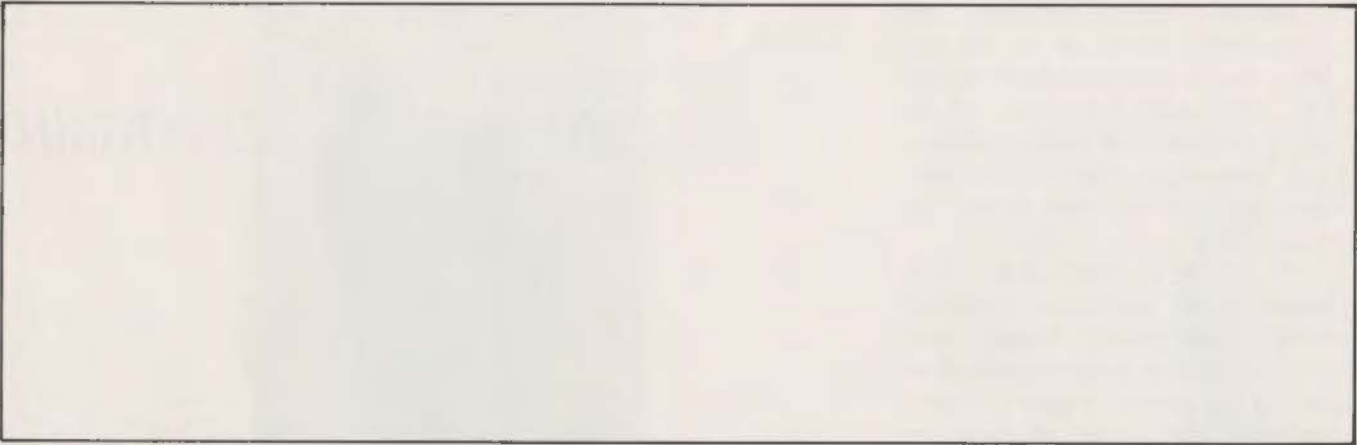
Sandfield has a convenient and sympathetic jury of six in his own home before he ever submits an entry. "Of course," he says, "I do get a good deal of helpful criticism and instructions from my five children and my wife—on a very informal basis."

He carved his first work with a pocket knife and some carpenter tools, then started buying wood gouges and other sculpture tools. Now he has a good set of tools for wood sculpting, but a set of tools for sculpting in marble may be next. Sandfield says, "just recently, I picked up a block of marble and am trying my hand at that with some borrowed stone cutting tools."

"Most of the material that I have used has come from old houses that we have torn down, cedar and bois d'arc posts that have been in the ground for forty or fifty years. The 'Monk' was carved from a left-over piece of teakwood rail from the Temple Emanu-El job."

And his original intent? Sculpture as a means of relaxation? "No doubt, you have watched television recently and learned how 'tensions fade away.' Well, this works just like the pills—the hammer stops hammering, the spring stops springing and the gong just stops!"





Some fifteen years ago many architectural firms were frankly skeptical concerning the use of concrete masonry units. This was certainly the attitude of our firm. However, the job of architectural education undertaken by such organizations as the Texas Concrete Masonry Association has made the concrete block unit more and more popular. What amounted to frank distrust by the author has now developed into a healthy respect and constantly increasing use of this handsome and durable material.

When we first began using concrete block we didn't realize the limitations of the material and were using it as we had other structural units. Through experience and advice we have come to use, we think, the concrete units as they were intended to be used. However, far beyond the mere use of this material we have found a whole new world of design possibilities opened to us by using the concrete units in an intelligent, practical and decorative manner.

When certain standards were adopted throughout the concrete masonry industry we could rely on the product to perform as we expected it to; we feel the increasing widespread use of concrete masonry units stems in part from quality control that has been adopted by all members of the industry. Quality control has enabled us to depend on certain tolerances, such as linear shrinkage, size tolerance, moisture content and all of the other factors concerned with an inexpensive though quality material.

With quality control came another factor of importance to all architects, that is the economy of the material itself. Though the units were improved the price in place basically remained the same. The variation as to jointing, proper reinforcing and control joints proved to be competitive with most dry wall and other construction methods.

We sincerely believe that the greatest stimulus concerning the use of concrete masonry units came with the advent of the multiple of variously shaped blocks that could be manufactured with close tolerances and excellent finishes. The architect's imagination was spurred to use these different forms into a myriad of

interesting and varied designs. The architect was now freed to use decorative patterns in his structural and back-up walls which previously had not been available to him at an economical cost. With new unit shapes being constantly created the architect has not really begun to tap all the design possibilities of concrete units.

In our experience we have been able to take advantage of certain inherent qualities of concrete masonry units in our construction. We have endeavored to use concrete masonry units in our low-cost housing work because we have found the durability of the concrete block to be such an important factor especially in this type of structure. As usual with any low-rent housing the initial cost of installation is of a great deal of importance; however, upon comparison with initial cost and a life expectation of 40-years, concrete masonry units have always had the advantage over dry wall construction.

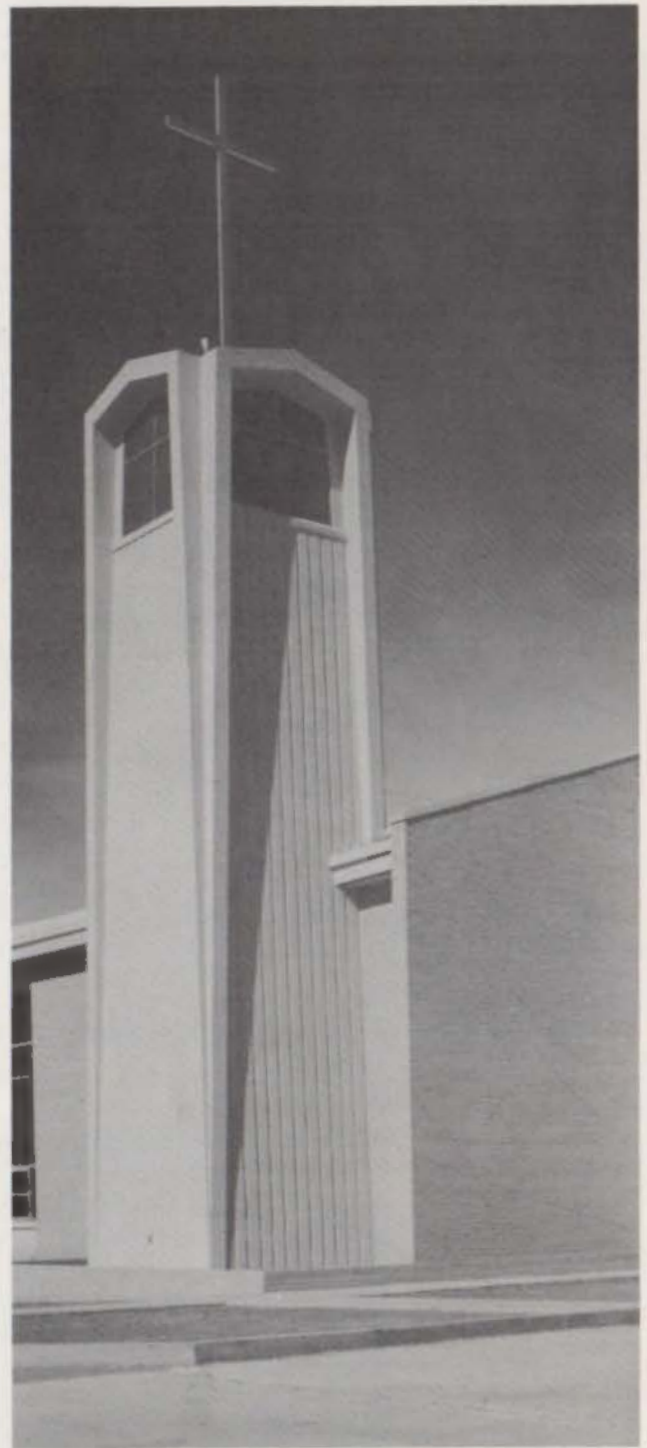
The excellent sound absorbing qualities of concrete masonry units have again been a factor that we considered in the use of the units. For example, we were able to use a 6" thick unit between two adjoining apartments in a low-cost housing project which met the sound reduction requirements between apartments without any additional materials being used. In larger areas such as bank lobbies where we have used a hard surfaced floor and acoustic ceilings the sound absorption gained from the use of concrete masonry units has been gratifying.

The finishing of concrete units, both interior and exterior, is an amazingly simple operation and one which has proven very satisfactory to ourselves and our clients. The types of finish which can be applied are varied and always can be made interesting.

The use of concrete masonry units is certainly not the great architectural panacea but concrete masonry units have certainly added a new dimension in building construction and design.

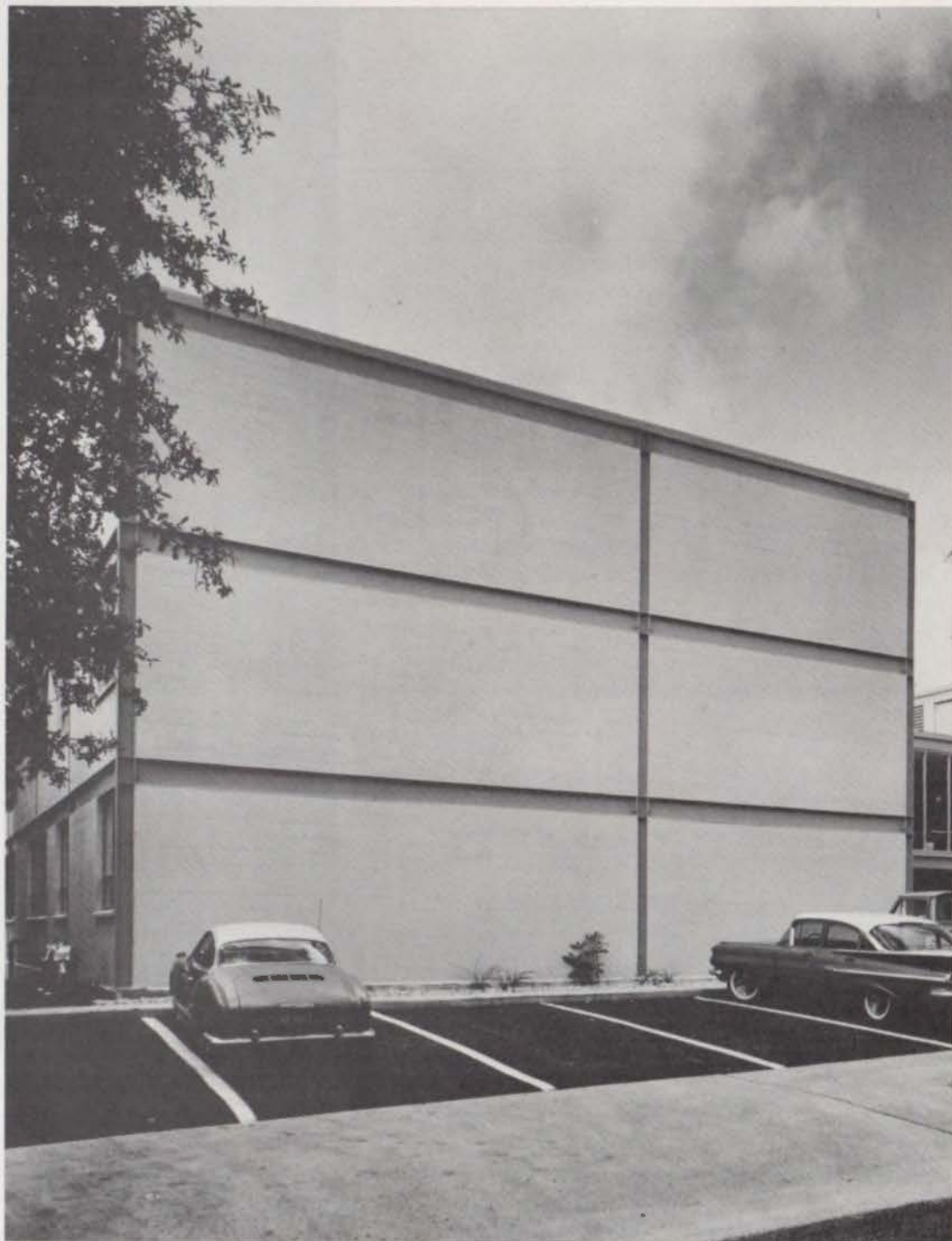
*Henry Robert Walther
Architect - Engineer
San Antonio, Texas*

CONCRETE MASONRY IN . . .



. . . CHURCHES . . .

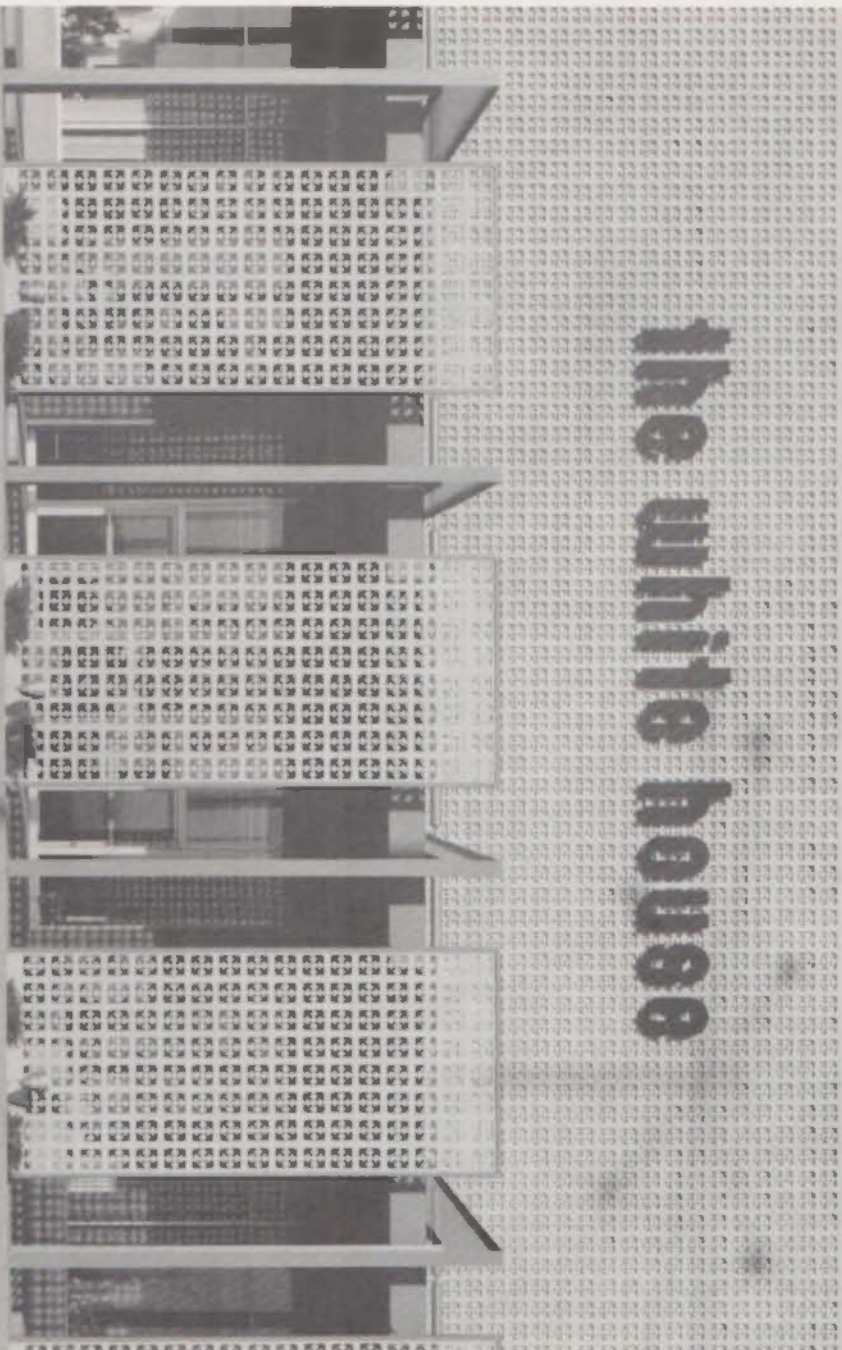
...APARTMENTS...





... SCHOOLS ...

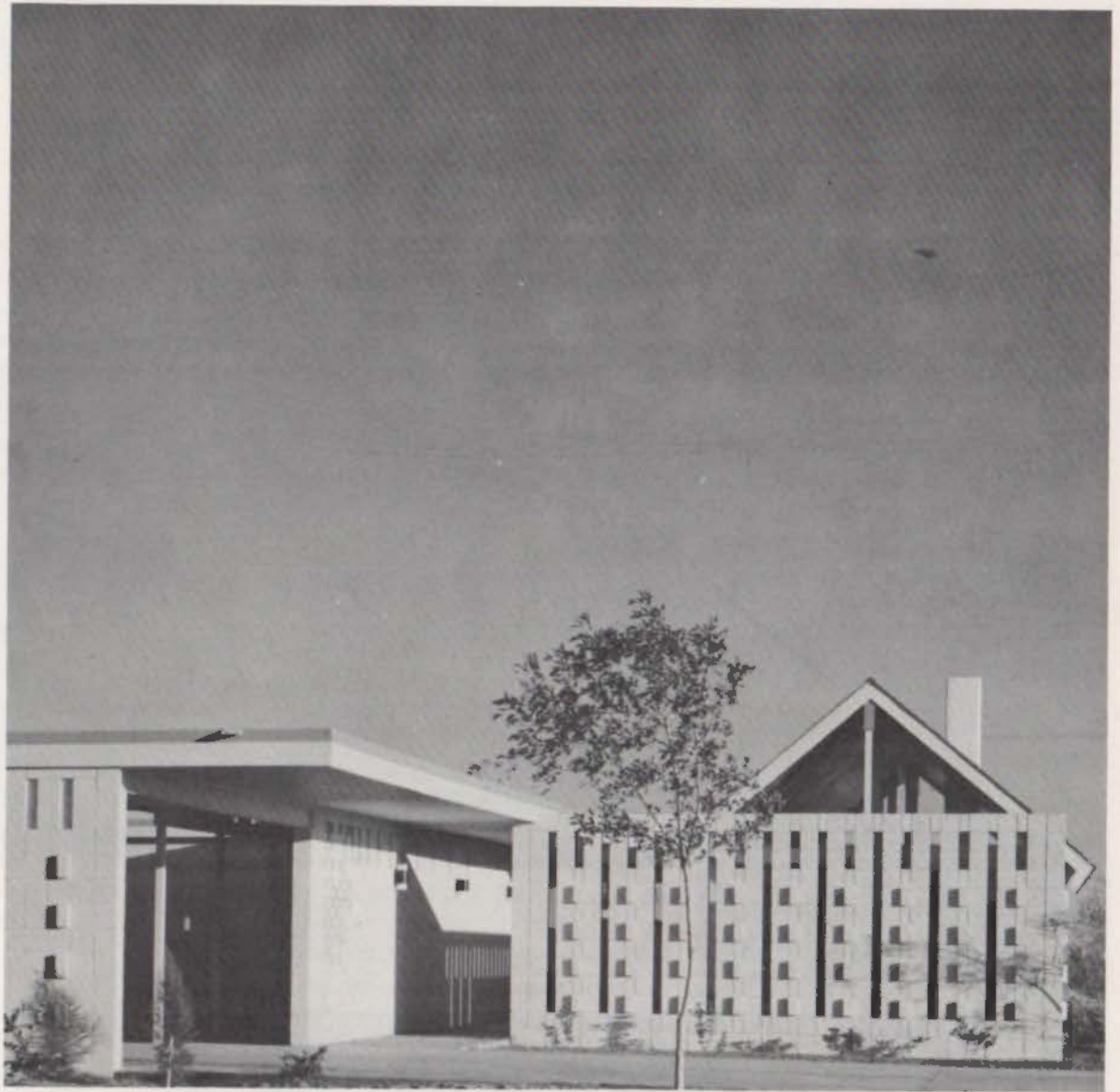




The White House

... BUSINESS ...

TEXAS ARCHITECT



... RESIDENCES ...



Concrete Masonry For Back-Up

George H. Smart, A.I.A.
Partner, Smart & Whitehead
Architects
Houston, Texas

In only a few short years concrete block has become a new word in the architects vocabulary, even though not many years ago the thought of using block in the construction of institutional and public buildings was discouraged in this area. Today, with the advent of high pressure steam curing, referred to generally as the "autoclave" process, concrete block is a suitable back-up material for any type of building. Concrete masonry units, like all masonry materials, are subject to expansion and contraction. To compensate for this movement, proper location of control joints and proper use of joint reinforcing and expansion joints may be incorporated into the back-up, making the matter of expansion and contractions no longer a problem.



Structurally, concrete block for back-up has proved generally to test much higher than most building code requirements. In recent tests by the Portland Cement Association, papers have been published to show that even the weakest walls tested were well within normal code requirements. From the practical standpoint, concrete block as a back-up material is structurally correct for any form and type of construction.

We have found that in many buildings, the use of concrete block for back-up is the answer to our problem merely because of the texture pattern, which we could not achieve with any other type of back-up. The texture of concrete block in itself is very pleasant, but above that, the numerous pores in the surface of the block, offer a substantial acoustical sound absorption characteristic. The use of concrete back-up for walls of activities' buildings and gymnasiums have proven very effective from an acoustical standpoint. New patterns created continuously by the manufacturers' designers, have given the architects a new key to unlock their closed-in design problems. There are numerous patterns, designs, surface finishes and textures that may be incorporated on the finish side of the back-up block. Also the use of glazed plastic face block has become very wide spread. These units are very desirable in areas where sanitary conditions are required. The units are impervious, resist certain chemicals, and are resistant to crazing and straining.

Concrete block for back-up has also proven to be an economical material to use. A thorough comparison with other back-up materials will generally place concrete block in a favorable position within your cost structure.

IN PASADENA



CENTRAL BAPTIST CHURCH
SANDLIN, ROSS & BASSETT,
ARCHITECTS
HERMAN L. MAY & CO., INC.
MASONRY CONTRACTORS

**EXPERIENCE
and
PRIDE
in
WORKMANSHIP
is
YOUR
GUARANTEE**

HERMAN L. MAY & CO., INC.
MASONRY CONTRACTORS
900 EAST HOUSTON,
PASADENA, TEXAS
GR 3-7486

23rd Annual CONVENTION

Texas Society of Architects
Rice Hotel
Houston, Texas
24, 25, 26, October 1962

Wednesday, October 24

- 8:30 a.m. Golf Breakfast—Houston Country Club
- 9:30 a.m. Texas Quarries' Golf Tournament—Houston Country Club
- 12:00 noon-
- 7:30 p.m. Registration—Mezzanine Floor, Rice Hotel—Sam Houston Room
- 2:00 p.m. Called Committee Meetings—Rooms To Be Announced
- 3:00 p.m. Conclave of Chapter Officers—Persian Room
- 7:00-
- 9:00 p.m. "Welcome Party"—Grand Ballroom, Rice Hotel—Ticket

Thursday, October 25

- 8:00 a.m.-
- 5:00 p.m. Registration—Mezzanine Floor, Rice Hotel—Sam Houston Room
- 8:30 a.m. Acme Brick Breakfast—Grand Ballroom—Rice Hotel—Ticket
- 9:30 a.m. Opening Business Session—Grand Ballroom—Rice Hotel
- 10:00 a.m. "Arts and the Man"—Program I, Grand Ballroom—Rice Hotel—Ticket
 - Basil Rathbone—Narrator
 - Ruth Ann Koesun—American Ballet Theatre
 - Ivan Allen—American Ballet Theatre
 - Houston Foundation For Ballet
- 12:00 noon Transportation to Sheraton-Lincoln from Rice Hotel
- 12:30 p.m. Awards Luncheon—Sheraton Ballroom—Sheraton-Lincoln Hotel—Ticket
- 2:00 p.m. Transportation to Rice Hotel from Sheraton-Lincoln

- 2:30-
6:00 p.m. "Greatest Show on Earth", Carnival of Exhibits—Mezzanine—Rice Hotel
- 8:00 p.m. Transportation to Music Hall from Rice Hotel
- 8:30 p.m. "Arts and the Man"—Program II—Music Hall—Ticket
Houston Symphony Orchestra, Sir John Barbirolli—Conductor
Basil Rathbone—Narrator
Champagne—After Performance

Friday, October 26

- 7:30 a.m. "Early Risers" Breakfast and Annual Convention Committee Meeting, Insurance Committee, Persian Room, Third Floor—Rice Hotel
- 8:30 a.m.-
2:30 p.m. Registration—Mezzanine Floor, Rice Hotel—Sam Houston Room
- 8:30 a.m. Business Session—Petroleum Club, Rice Hotel
- 10:30 a.m. "Arts and the Man"—Program III, Grand Ballroom—Rice Hotel—Ticket
Basil Rathbone—Narrator
- 12:30 p.m. President's Luncheon—Grand Ballroom—Rice Hotel—Ticket
- 2:30 p.m. "Expanded Services Seminar"—Program IV, Grand Ballroom—Rice Hotel
Reginald Roberts, F.A.I.A.—Moderator
James M. Hunter, F.A.I.A.—Overall Concept
Herbert H. Swinburne, F.A.I.A. Actual Practice
Clinton Gamble, F.A.I.A. Mandatory Standards
- 2:30 p.m. Transportation to World Trade Bldg. from Rice Hotel
- 3:00 p.m. "International Party"—Ladies Event—World Trade Club, World Trade Bldg.—Ticket
- 8:00 p.m. Producer's Council Cocktail Party—Carnival of Exhibits Area, Mezzanine—Rice Hotel—Ticket
- 9:00 p.m. "Gala Convention Ball"—Grand Ballroom—Rice Hotel—Ticket
Ed Gerlach Orchestra
*Ralph Liese's Quintette
Midnight Buffet Breakfast
*Courtesy of Evans & Walsh, Inc.

Saturday, October 27

- 10:00 a.m. Tour of new Houston buildings and Medical Center—Leave from Rice Hotel—Return to Rice Hotel 12:30 p.m.
- 8:00 p.m. Rice versus Texas Football Game—Rice Stadium

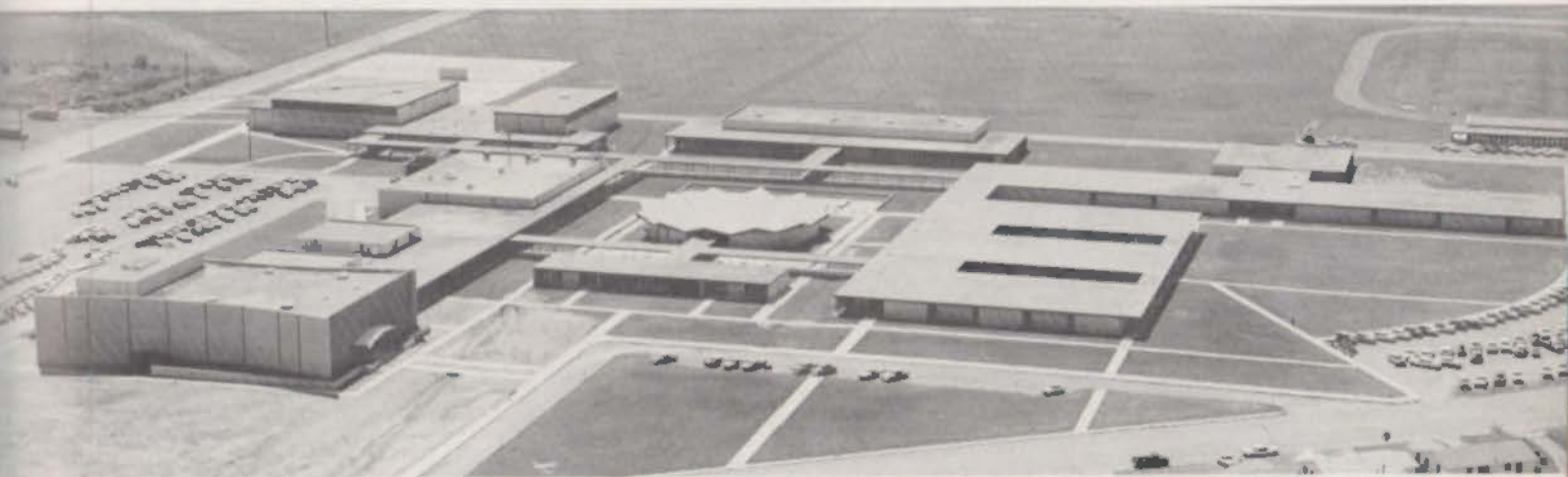
Sunday, October 28

- 2:30 p.m. Houston Oilers versus Dallas Texans
Jeppesen Stadium

Featherlite
BLOCK

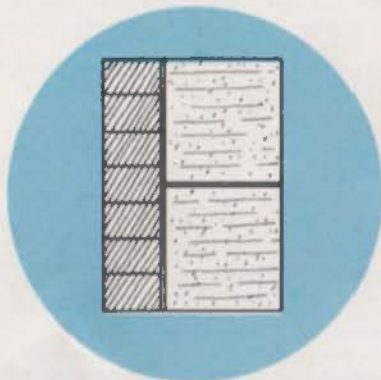
— STILL THE NO. 1 BUILDING MATERIAL

ARCHITECTS: TITTLE & LUTHER — BOONE & POPE



COOPER HIGH SCHOOL — ABILENE, TEXAS

FEATHERLITE BLOCK CO.
IRVING SAN ANTONIO



TEXAS CONCRETE BLOCK CO.
ABILENE MIDLAND LUBBOCK

From the wide selection of structural wall materials available, Featherlite masonry units again were the ideal choice for beauty, permanence, insulation, fire safety and low maintenance.

Membership Roster for Texas Society of Architects - 1962

ABILENE CHAPTER

Corporate Members

Boone, Daniel, 262 Leggett
 Bridges, John M., P.O. Box 5284
 Brown, Woodlief F., 416 Mims Building
 Buzard, Richard, P.O. Box 5622
 Castle, David S., Jr., P.O. Box 124
 Hinton, Joseph D., Brownfield Bldg., Snyder
 Lindberg, Paul T., 2218 Sayles Blvd.
 Luther, John J., 542 Butternut
 Moore, Bob, 262 Leggett
 Semple, William, P.O. Box 12, Brownwood
 Strickland, J. F., P.O. Box 2259
 Tittle, James D., 542 Butternut

Associate Members

Graves, William L., 262 Leggett
 Loving, Horace, 542 Butternut
 Martin, William J., 2515 Wheless Lane, Apt. 1, Austin
 McDonald, Ed
 Olds, Fred, P.O. Box 2259
 Pope, William A., 262 Leggett
 Price, Les, 262 Leggett
 Wheeler, James H., Jr., 262 Leggett

BRAZOS CHAPTER

Fellow and Member Emeritus

Langford, Professor Ernest, Box 4172, South Station,
 College Station

Corporate Members

Evans, Benjamin H., Engineering Experiment Station,
 College Station
 Hildebrandt, Edward F., Washington County State
 Bank Building, Brenham
 Holleman, Theo R., Division of Architecture, A & M
 College, College Station
 Josey, Henry Campbell, 607 West 29th Street, Bryan
 Matthews, Wilbur R., 314 Varisco Building, Bryan
 Nash, William E., Box 41, Bryan
 Vrooman, Richard, APO 143, Box DAC, c/o Post-
 master, San Francisco, California
 Wagner, William G., Division of Architecture,
 A & M College, College Station
 Wagner, William G., Division of Architecture,
 A & M College, College Station

Associates

Godwin, Charles J., 1903-A South College Road,
 Bryan
 Lanford, Samuel T., Division of Architecture, A & M
 College, College Station
 Rotsch, Melvin M., Division of Architecture, A & M
 College, College Station
 Whitson, Frank E., Jr., Division of Architecture A & M
 College, College Station
 Walden, James, APO 143, Box DAC, c/o Postmaster,
 San Francisco, California

CENTRAL TEXAS CHAPTER

Fellow Members

Brooks, R. Max, 203 Perry-Brooks Bldg.
 Creer, Philip D., School of Arch. University of Texas
 Fahr, Arthur, P.O. Box 93
 Sutherland, Louis F., P.O. Box 855

Members Emeriti

Kuehne, Hugo F., 200 International Life Bldg.
 Thomas, Roy L., 2812 Hemphill Park

Honorary Members

Goeth, Ralph C., P.O. Box 894
 Gubbels, Jac L., 2515 Wooldridge Drive
 Johnson, James E., 100 N. Crockett, Cameron

Corporate Members

Allen, John Chiles, 2914 Pearl St.
 Barnes, Jay W., 1013 East 38 1/2
 Barr, Howard R., 203 Perry-Brooks Bldg.
 Barrow, David B., Jr., 4423 Crestway
 Bible, Philip L., Jr., 2501 Quarry Road
 Bowman, Jon, 3500 Cherry Lane
 Brush, Carlton, 4000 Lullwood
 Cloutier, J. Jack, P.O. Box 398, Shiner
 Coates, Paul Noyce, Jr., 2914 Pearl St.
 Collier, Wm. M., Jr., 2500 Addison
 Crow, James W., 417 West 6th

Crume, Herbert C., 2603 La Ronde
 Day, Fred Winfield, Jr., 2707 Wooldridge Dr.
 Dean, Thomas Scott, 3406 Bonnie Road
 Delaney, Miles A., 2308 Rundell Place
 Dornberger, Werner W., 810 East 23rd St.
 Driscoll, Dan J., 3416 Hillview
 Eppes, Bill Gorton, 302 West 15th
 Gannaway, Allwyn C., 2004 Meadowbrook
 George, Walter Eugene, Jr., 3215 Churchill Drive
 Graeber, David, 203 Perry-Brooks Bldg.
 Granger, Charles T., P.O. Box 93
 Greeven, Alton E., 2816 Hemphill Park
 Griffin, Langford O., Jr., P.O. Box 93
 Guice, Edward H., 4001 Ridgelea Drive
 Gustafson, Winfred O., 1313-A South Congress
 Jessen, M. E., 2816 Hemphill Park
 Jessen, Wolf E., 2816 Hemphill Park
 Jones, James Gullis, Box 2392 Capitol Station
 Kermacy, Martin S., 2816 Wooldridge Drive
 Landes, Robert Paul, 1013 East 38 1/2
 Legge, Don Edward, 2914 Pearl
 Logsdon, Vail E., 2317 Monticello, Temple
 Lundgren, Leonard J., 1203 West 6th St.
 McAdams, Kelly R., 2607 Great Oaks Parkway
 McMath, Hugh L., 2501 Inwood Place
 Maurer, Edward J., 1203 West 6th
 Mayhall, Temple B., 1906 Raleigh
 Millhouse, Charles A., 2816 Hemphill Park
 Mills, Madison H., 3313 Bridle Path
 Moore, Walter C., Jr., 4707 Parkcrest Drive
 Morris, Edgar A., Jr., 1809 Kerr
 Nuhn, Kenneth M., 2303 Rundell Place
 O'Connell, Wm. R., 504 West Seventh
 Page, C. H., Jr., 305 West 11th St.
 Page, George M., Box 855
 Page, Louis C., Jr., Box 855
 Pearce, Hugo Leipziger, 1314 Possum Trot Drive
 Pendley, C. M., Jr., 2410 San Antonio
 Phillips, Henry W., Jr., P.O. Box 855
 Pringle, Robert B., 4306 Dorchester
 Probst, Victor G., 504 West Seventh
 Riley, Barton D., 1211 B West 34th St.
 Roessner, Roland G., 3414 Foothills Terrace
 Rowe, Richard S., 2403 Oakdale Court
 Rucker, Wm. G., Jr., 818 First Nat'l. Bk., Temple
 Saunders, William B., 208 East 10th
 Shetelman, Thomas W., School of Arch. University
 of Texas
 Stautz, Carl Henry, 1704 Exposition Blvd.
 Swallow, Richard P., 4403 Balcones Drive
 Walling, George Lewis, P.O. Box 296
 Watson, A. R., P.O. Box 270
 White, James R., 203 Perry-Brooks Bldg.
 White, Robert L., Office of Supvr. Arch. University
 of Texas
 Wukasz, Joe Eugene, P.O. Box 788, University Sta.
 Youngblood, R. Lamar, 1206 Loma Drive
 Zapalac, George Henry, P.O. Box 93

Associate Members
 Burnett, Samuel M., Jr., 1106 Folts Ave.
 Castle, Henry G., Jr., 3400 Oakmount
 Chamlee, William Post, 802 First Nat'l. Bk., Temple
 Dieter, Fred W., 1907 Arthur Lane
 Gannaway, Herbert S., Office of Supvr. Arch. Uni-
 versity of Texas
 Goodman, Jack C., 1013 East 38th
 Kuykendall, James M., 2007 Melridge Place
 Prestler, Paul, 2520 Spring Lane
 Happel, O. Carl, Jr., 1206 Fairwood Road

New Members

Carlton, Charles S., Jr., 1905 Pecos St.
 McKee, J. Eugene, 1211 B West 34th St.

COASTAL BEND CHAPTER

Member Emeritus

Johnson, Otis F., 141 Naples Street, Corpus Christi

Corporate Members

Anderson, Walter H., 3226 Reid Drive, Corpus Christi
 Atmar, Richard S., 838 Adel, Corpus Christi
 Beasley, Robert J., P.O. Box 848, 206 East Houston,
 Beeville

Bennett, Ralph, Jr., 4618 Kirkwood Dr., Corpus Christi
 Blanton, Paul Thompson, 3154 Reid Dr., Corpus Christi
 Brock, Victor, 210 Jones Building, Corpus Christi
 Donnelly, C. P., 2220 Morgan, Corpus Christi
 Gibson, James Phillip, Box 3087, Corpus Christi
 Greene, Donald, 322 Catalina, Corpus Christi
 Hamon, E. Dexter, 2021 16th St., Corpus Christi
 Hans, Joseph A., Jr., 1317 Third, Corpus Christi
 Lyons, James Irwin, 715 Furman, Corpus Christi
 Mabrey, Leslie Bruce, 4918 Maple St., Corpus Christi
 Machlan, Jim Walker, 4209 Nottingham, Corpus
 Christi
 Martin, Daniel Webster, 1101 South Brownlee,
 Corpus Christi
 McCord, H. B., 1220 South Staples, Corpus Christi
 Miller, Boyd Kinghay, 224 Mullen Building, Alice
 Pennington, Sam Allen, Jr., 4330 Aspen, Corpus Christi
 Rouse, Richard W., 433 Sheridan, Corpus Christi
 Skellett, Benj. N., P.O. Box 7402, Corpus Christi
 Smith, Vernon, Jones Building, Corpus Christi
 Smyth, Joe G., Jr., Gulf Security Building,
 Corpus Christi
 Smyth, Needham B., Gulf Security Building,
 Corpus Christi
 Stalter, William Butler, 520 S. Chaparral Street,
 I.B.M. Building, Corpus Christi
 Tanner, Carroll V., 3340 Floyd Street, Corpus Christi
 Turner, Jack Rice, 4818 Concord, Corpus Christi
 Whitet, William, 3735 Aransas, Corpus Christi
 Wilde, Walter Ernest, 1630 South Brownlee,
 Corpus Christi
 Wisznia, Walter, 3154 Reid Dr., Corpus Christi
 Yeager, Arlin, Jr., 1450 Arlington, Apt. A,
 Corpus Christi

Associate Members

Jones, Delbert, 907 N. Richardson, Apt. B., Roswell,
 New Mexico
 Lorenz, Milton E., 232 Bevly Building, Corpus Christi
 Martin, John Oliver, 1405 Ray Dr., Corpus Christi
 Nesbit, Earl J., Jr., 4926 Maple St., Corpus Christi
 Olson, John Minter, 1041 Cunningham, Corpus Christi
 Roberts, E. E., 353 Claremore, Corpus Christi
 Roots, Orby, 630 Glazebrook, Corpus Christi
 Saffliff, Thomas E., 1030 Ponder, Corpus Christi
 Winston, Lloyd, 3236 Reid Dr., Corpus Christi
Junior Associates
 Martin, Alex, 4926 Maple, Corpus Christi
 Peterson, J. Soren, Jr., 5714 Belfast, Corpus Christi
 Terry, Ben A., 441 Paloma, Corpus Christi

DALLAS CHAPTER

Fellows

Bennett, J. Murrell, 2814 Fairmount
 Broad, Thomas D., 1327 Mercantile Dallas Bldg.
 Bryan, Ralph, U.S. Public Health Service, 1114 Com-
 merce

Dahl, George L., 2101 N. St. Paul
 DeWitt, Roscoe, 2025 Cedar Springs Road
 Meyer, Howard R., 2909 Fairmount
 Nelson, Donald S., 1327 Mercantile Dallas Bldg.
 Thomas, Arthur E., 820 N. Harwood
 Tatum, Herbert M., 2812 Fairmount
 Harrell, George F., 819 Republic Bank Bldg.

Honorary Members

Bywaters, Jerry, Dallas Museum of Fine Arts
 Houston, L. B., Park and Recreation Dept, City Hall
 Marcus, Stanley, Neiman-Marcus Company
 Springer, Marvin R., 2020 Fidelity Union Tower
 Swindle, D. D., 211 East Eighth
 Thornton, R. L., Hon., Mercantile Bank
 Members Emeriti

Kleuser, M. C., 318 Cadiz
 Overbeck, Clarence E., 6434 Park Lane
 Porter, Irving D., 6910 Robin Road
 Thomson, Henry B., 401 Burt Bldg.
 Woerner, Frank J., 6442 Vanderbilt

Membership

Adams, Jay H., 211 N. Ervay, Rm. No. 1608
 Adams, Moffatt D., 701 Exchange Bank Bldg.
 Aguirre, Pedro, Jr., 4447 N. Central Exp.
 Ahlschlager, Walter W., Box 6745
 Alexander, George, 710 Thomas Building

Alexander, R. E., Jr., 3704 Abrams Road
 Anderson, A. D., 13022 Coppenthill Rd.
 Anderson, Jacob E., 614 Thomas Bldg.
 Bedaracco, John Lee, 3507 Travis
 Bair, Royden S., 3540 Milton Ave.
 Bennett, J. Murrell, 2814 Fairmount
 Benson, William E., 3415 Cedar Springs
 Beran, E. E., 1900 Vaughn Bldg.
 Berry, Harold A., Hartford Building
 Biderman, Sam, 1220 National Building
 Boatwright, Cecil M., Jr., 700 W. Colorado
 Boarder, Eugene F., 2214 Cedar Springs
 Box, J. Harold, 3526 Cedar Springs
 Booziotis, Bill Custas, 8810 Garland Rd.
 Braden, David R., 200 W. Colorado
 Brandt, J. T., 3536 Milton
 Broad, Thomas D., 1327 Mercantile Dallas Bldg.
 Brooks, Lavere, 4310-E Westside Dr.
 Brown, John Hall, 424 N. Rusk, Sherman
 Brown, Stanley, 4012 Cedar Springs Road
 Brummett, William Ralph, 4149 Lovers Lane
 Bryan, Ralph, U.S. Public Health Service,
 1114 Commerce
 Buford, Fred, 1100 Rio Grande Nat'l. Bldg.
 Bullock, James Richard, 5111 East Side
 Burns, Paul E., 311 S. Akard
 Butkirk, Philip K., 2025 Cedar Springs
 Cape, George W., Jr., 7723 Claremont
 Callejo-Borges, Wm. F., 211 N. Ervay Bldg.
 Canaan, Gershon C., 708 Simons Bldg.
 Cavitt, L. C., Jr., 701 Vaughn Bldg.
 Chapman, Jay Lowe, 424 N. Rusk, Sherman
 Cheek, James B., 1901 1/2 N. Harwood
 Christensen, George E., 4340 N. Central Exp.
 Cinatl, Frank James, 403 Bon Air Dr.
 Clutts, James A., 211 N. Ervay Bldg.
 Collins, G. Mallory, 2921 Fairmount
 Cooper, James F., 3752 Matador Dr.
 Cooper, Peyton G., 706 Gibraltar Life Bldg.
 Corgan, Jack, 308 Tower Petroleum Bldg.
 Couch, James M., 3539 Culver
 Craycroft, Jack, 8118 Westchester
 Crittenden, Norman W., 2814 Fairmount
 Crown, Phil T., 323 E. Jefferson
 Dabney, Robert Louis, 7031 Westlake
 Dahl, George L., 2101 N. St. Paul
 Dakin, Wm. Edward, 6359 Oriole Dr.
 Danna, John B., 2902 Routh
 Davis, Edward C., 1327 Mercantile Dallas Bldg.
 Davis, Tie D., 4206 Hawthorne, Apt. K
 Decker, Howard G., 5008 Greenville Ave.
 DeFonds, Ardery Y., 2611 Southland Center
 DeWitt, Roscoe, 2025 Cedar Springs Road
 Dryden, Horace E., 2921 Fairmount
 Edney, E. P., Jr., 10818 Cassandra Way
 Edwards, George W., 1509-A Cochran
 Elkins, Harvey E., 2642 Roger Williams Rd., Irving
 Falls, Miles Edward
 Feinberg, Raymond S., 6617 Snider Plaza
 Fisher, J. Herschel, 725 Southland Center
 Floyd, James Wallace, 11319 Coral Hills Dr.
 Foster, Dales Y., 505 N. Ervay, Suite 2727
 Freeburg, Charles R., 710 Nat'l. Bankers Life Bldg.
 Gallagher, John William, 9835 Estacado Street
 Gamble, Eugene B., 601 Braniff Bldg.
 Gideon, Howard W., 13616 Preston Road
 Gill, G. Douglas, 4621 Edmondson
 Gill, Grayson, 1913 San Jacinto
 Goeldner, Paul, 1604 45th St., Apt. 14, Lubbock
 Goodwin, Robert D., 701 Vaughn Bldg.
 Gordon, Joseph F., 3010 Blackburn
 Griffin, Joseph A., 8747 Lake Fair Circle
 Grogan, Douglas R., 1241 E. Irving Blvd., Irving
 Graham, Walter Nichols, III, 4548 S. Versailles
 Halford, Robert Lavelle, 8827 Lanarkshire
 Hall, Allan W., 5816 Walnut Hill Lane
 Hallum, Vernon Aubrey, 3415 Cedar Springs
 Hamilton, E. G., 819 Republic Bank Bldg.
 Hardison, Fred L., 2025 Cedar Springs Road
 Harper, Terrell R., 710 Thomas Bldg.
 Harris, Harwell H., 3403 Lemmon Avenue
 Heath, Jerry, 2611 Southland Center
 Henderson, Philip C., 3526 Cedar Springs Road
 Hewitt, Chester H., 2704 Westminster
 Hidell, William H., 3010 Blackburn

Hibbard, William John, Jr., 3515 Normandy
 Hilliard, J. Edward, 314 N. East St., Arlington
 Hill, Bertram C., 5528 Live Oak
 Holden, Pat, 2307-C Nicholson Dr.
 Huddleston, N. Harper, 4572 Belfort
 Jahn, Edward C., 4029 Hawthorne
 Jarvis, Donald E., Republic Savings Bldg., Rm. 203
 3636 Lemmon
 Jarvis, H. Duane, Republic Savings Bldg., Rm. 203,
 3636 Lemmon
 Jones, Harold W., 700 W. Colorado Blvd.
 Jones, J. Tom, Jr., 2650 Cockrell Hill Road
 Jones, Robert H., Jr., 820 N. Harwood
 Keller, Billy Ray, P.O. Box 30506
 Kelman, Ralph, 4153 Travis St.
 Kemp, Harris A., 710 Thomas Bldg.
 Kerr, Edward L., 1143 Brunner Ave.
 Kleinschmidt, Donald, 2248 Springhill Dr.
 Knowles, Thomas G., 2331 Gus Thomasson
 Kuhlmann, Joseph J., 821 Overglen
 Lacy, Larry, 3716 Shenandoah
 Lane, Clifford J., 401 Braniff Bldg.
 Leinbach, C. H., 723 E. 9th St.
 Leinbach, Jess L., 723 E. 9th St.
 Lightfoot, Will Henry, 10 First Street N.E., Paris
 MacCammon, J. N., 112 Meadows Bldg.
 Malone, Gary R., 2206 Ridgeway, Arlington
 Manos, Peter N., 5638 Mercedes Ave.
 Marcellus, Phillip B., 10563 Marquis Lane
 Marinick, Otto Anthony, 7103 Shook Ave.
 Marlinsons, Hermanis, 4515 Prantice
 Mathies, Harry E., 8924 Capri, Richardson
 McClure, Wilson, 3906 Lemmon Ave.
 McFadyen, Robert W., 9731 Ash Creek Dr.
 McGill, George C., 2030 N. Henderson
 McGrew, William E., 7828 Idlewood
 Melun, Norman C., 4330 Ridge Road
 Merrill, W. Ralph, 820 N. Harwood
 Metcalf, J. E., Jr., 1107 W. Fifth, Corsicana
 Meyer, Howard R., 2727 Oak Lane
 Milburn, Joe W., 9206 Highridge Dr.
 Miller, Mark E., Jr., 1621 Faircourt, Irving
 Miller, Tom Polk, 711 W. Sycamore, Denton
 Mills, Joseph M., 8215 Westchester Dr.
 Minor, Carter, 2133 McKinney Ave.
 Miranda, Roland V., 833 Valley View Dr., Grand
 Prairie
 Morey, A. Warren, Jr., 311 S. Akard
 Morton, Marion David, Jr., 634 Newberry, Richardson
 Moseley, Hal M., 2030 N. Henderson
 Moss, John C., 2511 Springvale
 Moss, Leland M., Box 2640, 6211 Lemmon
 Nelson, Donald S., 1327 Mercantile Dallas Bldg.
 Newbury, Alvin L., 2101 N. St. Paul
 Newton, Charles Chartier, 3910 Bowser
 Norris, Robert Henry, III, 3415 Cedar Springs
 Oglesby, Enslie O., Jr., 2906 Fitzhugh
 Palm, Thomas J., Jr., 354 Hillside Village
 Palmer, Fred Niles, 703 Nesbitt St.
 Parker, Howard C., 211 N. Ervay Bldg.
 Pask, Neil Evan, 1st Bank & Trust Bldg., Richardson
 Perkins, John Astin, 2201 Cedar Springs Rd.
 Perry, Robert J., 4310-G Westside Dr.
 Phinney, Temple, 2512 Cedar Springs Road
 Pierce, A. H., 2708 Routh St.
 Pierce, John Allen, 1327 Mercantile Dallas Bldg.
 Plugge, Roman C., 10230 Longmeadow Dr.
 Pratt, James Reece, 3526 Cedar Springs
 Prinz, Harold E., 4310-E Westside Dr.
 Puffy, Paul G., Jr., 203 Republic Savings Bldg.,
 3636 Lemmon
 Rainoshek, Dennis W., 7061 Wakefield Circle
 Resh, Paul J., Jr., 6733 Santa Anita
 Reed, William D., Jr., 530 Mercantile Securities Bldg.
 Rich, Joe L., 2727 Cedar Springs
 Richey, J. Harvey, Jr., 1404 Kirby Bldg.
 Richter, Will Scott, 3704 Abrams Road
 Roberts, James H., Jr., 615 Brookhurst
 Rooth, Carl H., Alpha Corp., Richardson
 Russ, Thomas A., P.O. Box 5806
 Russell, James A., 4616 Southern
 Rutherford, Gene R., 3715 Durango
 Salem, Albert Richard, 4020 Montwood Lane
 Sandfield, Max M., 3722 Bowser Ave.
 San Miguel, Rudolph Robert, 506 Southland Center

Schumann, Al, 7837 Northaven Rd.
 Selzer, Dale Edwin, 2806 Hood
 Sentell, Gordon D., 8546 Stillwater
 Shelmir, W. Overton, 1900 Vaughn Bldg.
 Siback, Gordon, 6446 Lupton Dr.
 Sinclair, Carroll Mark, 410 W. Colorado
 Skipper, Carlton, 12820 Coit Road
 Smith, E. Carlyle, Box 1288, 306 N.W. 2nd
 Grand Prairie
 Smith, Harwood K., 506 Southland Center
 Smith, James W., 2151 Fort Worth Ave.
 Smith, Joseph Earl, III, 3016 Fairmount, Suite 202
 Smith, J. Murray, 4522 Fairway
 Smith, Stanley S., 6225 Bordeaux, Apt. 205
 Smith, Vernon S., 2151 Fort Worth Ave.
 Spillman, Pat Y., 311 S. Akard
 Stanley, Thomas E., 3505 Turtle Creek, Box 2205
 Steuber, Theodore, 5410 McCommas
 Stevenson, Joseph H., Route 1, Box 216, Grand
 Prairie
 Stinson, Robert A., 211 N. Ervay, Rm. 1819
 Summey, Orville M., 1915 Myrtlewood Dr.
 Swank, Arch B., Jr., 3415 Cedar Springs
 Tatum, A. J., 2025 Cedar Springs
 Tatum, Herbert M., 2812 Fairmount
 Teipel, Albert H., 2025 Cedar Springs Rd.
 Terrazas, Nick, 5901 Goodwin
 Talley, Ken Michael, 946 Fairwood
 Thomas, Arthur E., 820 N. Harwood
 Thomas, Downing A., 3415 Cedar Springs
 Thompson, John R., 7055 Carpenter Freeway
 Todd, J. Stuart, 1066 W. Mockingbird
 Tucker, Oliver T., 1714 Winthrop, Irving
 Tung, Albert K. H., 4639 Insurance Lane
 Upshaw, Forrest, Jr., 1066 W. Mockingbird
 Vaughn, Harold, 308 S. Akard, Box 5521
 Volk, Leonard William, II, 4115 N. Central Exp.
 VonderHoya, H. A., 7828 Brook Hollow Rd.
 Warder, Marshall H., 822 Roberts Rd., Grand Prairie
 Wassell, John W., 1327 Mercantile Dallas Bldg.
 Watson, R. Mickey, 3714 W. Cranston Ct., Irving
 Watson, Stanley Gene, 4520 Mockingbird
 Westfall, Dalbert C., 820 N. Harwood
 White, Latham, 425 S. Field St.
 White, Robert D., 212 Thomas Bldg.
 Wiley, James E., 3739 Binkley
 Wilshire, John P., 2030 N. Henderson
 Wittchell, Charles B., 2214 Cedar Springs Road
 Woodward, Thomas E., 6959 Arboreal
 Worrall, Gerald, II, 3415 Cedar Springs
 Wright, Ernest E., Jr., 2727 Cedar Springs
 Wright, James S., 2025 Cedar Springs
 Young, David A., 2211 Swanssee
 Yost, William Geo., 7055 Carpenter Freeway

EL PASO CHAPTER

Members Emeriti

McGhee, Percy, 3015 N. Florence
 Thorman, Otto H., 1604 E. Yandell Dr.
 Wuehrmann, Wm. G., 310 N. Stanton St.

Fellow

Carroll, Edwin W., 1001 E. Yandell Dr.

Corporate Members

Bynum, Muto Otto, 8327 Sageland Way
 Carter, Gilbert B., 113 E. Franklin Ave.
 Crocker, Theodore, 765 Bittersweet
 Daubie, Louis, 1001 E. Yandell Dr.
 Davis, Ralph V., 1006 Mills Bldg.
 English, Hugh, 1001 E. Yandell Dr.
 Fouts, Robert W., 1429 E. Yandell Dr.
 Garland, Robert D., Jr., 1551 Montana
 Henry, Charles L., 201 Mari Bldg.
 Higgins, Clarence M., 827 E. Yandell Dr.
 Hilles, David E., Jr., 1551 Montana
 Kent, Stephen W., 201 Mari Bldg.
 Kuykendall, W. E., Jr., 5801 Trowbridge
 Lane, Harry Dean, 5933 Gateway Blvd. West
 Langford, James M., 501 Mills Bldg.
 Licht, Richard H., 827 E. Yandell Dr.
 McCombs, Clinton L., 5801 Trowbridge
 Middleton, Sam T., Jr., 400 Montana Ave.
 Monroe, James E., 827 E. Yandell Dr.
 Nesmith, B. Rea, 5933 Gateway Blvd. West
 Ring, John F., 1001 E. Yandell Dr.
 Skidmore, Dickson M., 702 E. Yandell Dr.
 Stanley, Duffy B., 610 Mills Bldg.

Staten, George C., Jr., 400 Montana Ave.
 Thorpe, Wm. F., Jr., 1006 Mills Bldg.
 Turner, Dorris B., 618 Cincinnati
 Vail, Samuel U., 610 Mills Bldg.
 Waterhouse, C. Ewing, 1001 E. Yandell Dr.
 Young, Carl J., 1551 Montana Ave.

Associate Members

Benner, A. V., Sr., 607 El Paso Nat'l Bk. Bldg.
 Boyd, William D., 5933 Gateway Blvd. West
 Du Sang, George, Jr., 1001 E. Yandell Dr.
 Foster, John P., 1001 Mills Bldg.
 Henry, Donald F., 1006 Mills Bldg.
 Hunt, James C., 827 E. Yandell Dr.
 Rand, N. Patrick, 1001 E. Yandell Dr.
 Sawtelle, Gilbert G., 3531 Harrison St.

Junior Associate Members

Bullock, Luther V., 5933 Gateway Blvd. West
 Carson, John M., 5933 Gateway Blvd. West
 De Villier, Charles, 1551 Montana
 Fischer, Herbert M., 5933 Gateway Blvd. West
 McIlvain, Jess, 1551 Montana
 Meisel, Martin Joseph, 1429 E. Yandell Dr.
 Murga, Alberto, 1001 E. Yandell Dr.
 Peilati, Agostino, Jr., 201 Mart Bldg.
 Schaefer, Hilpert, 1006 Mills Bldg.
 Skelton, James E., 1001 E. Yandell Dr.

Honorary Member

Schreck, Horst, Dr., North Loop

Chapter Members No Longer Residing In The City
Corporate Members

MacNab, Alexander, J., Jr., Santa Fe, N.M.

Associate Members

Boyer, Daniel J., Houston

Junior Associate Members

Arburn, Robert W., San Antonio

Jones, J. Carlos, San Antonio

FORT WORTH CHAPTER

Member Emeritus

Capelle, A. J., 800 32nd Ave., Lot 619, St. Petersburg, Florida

Fellow

Wilson, Edward L., 601 Bailey Avenue

Corporate Members

Adams, Charles R., 2400 Continental National Bank
 Armstrong, Charles E., P.O. Box 9264 (1013 University)
 Bibb, Sumter, III, 3309 Winthrop
 Bigley, Chas. L. (Bob), 3204 South Hills
 Boese, Olin, 905 T & P Passenger Bldg.
 Buchanan, James C., Jr., 2945 Timberline Drive
 Burnett, Richard E., 3022 Sandage
 Chambers, Robert W., 2901 Bilglade Road
 Chromaster, William W., 2850-A West Berry Street
 Clark, Clifton G., 1004 T & P Passenger Bldg.
 Cox, Herman G., 415 Neil P. Anderson Bldg.
 Croston, M. E., Jr., 4809 Lubbock
 Digby-Roberts, F. W., 1205 Clover Lane

Dunlap, Jay T., 601 Bailey Avenue
 Elting, Tommy H., 3305 Creston Avenue
 Epperly, Don, 601 Bailey Avenue
 Floore, John W., 1401 West Lancaster
 Fowler, Samuel Donald, 4001 Driskell Blvd.
 Frye, Jason Wm. (Bill), Jr., P.O. Box 11192 (3805 Willomat)

Geren, Preston M., Sr., 1607 Fort Worth Natl. Bk. Bldg.

Geren, Preston M., Jr., 1607 Ft. Worth Natl. Bk. Bldg.
 Gernsbacher, Larry M., 2407 Continental Natl. Bk.
 Hamm, T. Z., II, 1004 Continental Natl. Bk.
 Harrell, Pierrapont, 2850-A West Berry Street
 Hartman, Frank M., 3528 Binyon
 Hedrick, Wyatt C., P.O. Box 765 (T & P Passenger Bldg.)

Herrington, Jack D., 2307 Wren Drive, Arlington, Texas

Hollis, Chester R., Jr., 3728 West 7th Street

Hueppelsheuser, Clyde R., 1401 West Lancaster

Jelinek, Robert, 415 Neil P. Anderson Bldg.

Johnson, J. B., Sr., 819 Penn Street

Johnson, J. R., Jr., 4805 Lubbock

Jones, R. Charlton, 843 Estes Ave., San Antonio, Texas

King, A. George, 819 Penn Street

Kneer, William C., Jr., 1004 Continental Natl. Bk.

Koeppe, Earl E., 1011 Continental Life Bldg.

Komatsu, Albert S., Ridglea State Bank Bldg.

Lane, William R., 1502 West Rosedale

Malin, Alfonso W., 601 Bailey Avenue

Maples, Horace C., 205 Blist Bldg., 711 W. 7th St.

Moore, Dick C., 2570 Highview Terrace

McAdams, A. C., 247 Majestic Bldg.

Padgett, Sidney T., 2509 W. Berry

Parker, Morris B., 819 Taylor

Parrish, William E., 5404 Stephanie Dr., Zone 17

Patterson, Joseph J., 601 Bailey Avenue

Pelich, Joseph R., 1203 Trans-American Life Bldg.

Pihak, Roy L., 6406 Ederville Road (P.O. Box 8147)

Schuffts, Jack A., 1607 Ft. Worth Natl. Bk. Bldg.

Schuppe, George W., 1625 S. Davis St., Arlington, Texas

Scudiero, Joseph S., 4067 West Seventh

Sowden, George S., 601 Bailey Avenue

Stuart, Lee, Jr., 2808 Bledsoe

Tomlinson, DeWitt F., 3729 Cresthaven Terrace

Yowell, Jim D., 1612 Electric Bldg.

White, Warren G., 3817 West Rosedale

Williams, Clifford K., 4215 Ridge Rd., Dallas 29, Texas

Wolfe, Howard C., 3512-A Kent

Woltz, Robert P., Jr., 1502 West Rosedale

Woodruff, Clyde H., 3859 Medford Road

Corporate Members (Out of Town)

Bennett, R. S., 1825 Austin Avenue, Waco, Texas

Cocke, John Walter, Jr., 1507 Franklin, Waco, Texas

Farmer, Shuford L., 4609 W., Waco, Texas
 Thomas, Raymond F., 109 1/2 S. Texas St., Sherman, With, James D., P.O. Box 1699, Waco, Texas
 Texas

Associate Members

Bailey, Donald G., 212 Midwest Bldg., 611 Main Street, Big Spring

Barfield, Cecil A., 601 Bailey Avenue

Barnes, Ray Dean, 6913 Overhill Road

Beal, George L., 817 Taylor

Boese, Olin, Jr., 905 T & P Passenger Bldg.

Crane, George S., 2304 Edwin

Echols, William W., 1607 Ft. Worth Natl. Bk. Bldg.

England, James Roy, 3405 Western Avenue

Hahnfeld, Lee Roy, 1328 Stafford R.

Haberman, Paul L., 817 Taylor

Hendricks, Bill M., 1122 Bonnie Brae

Jackson, Edward D., 3232 McCart

Jeanes, Ben H., 2869 Hunter Street

Johnson, Charles R., 4025 Driskell Bldg.

Johnson, Frederick H.

Koeppe, Earl Paul, 1800 Sunset Terrace

Mikusek, Alvin J., 1607 Ft. Worth Natl. Bk. Bldg.

Pfeffer, Charles J., 6348 Darwood Avenue

Reavis, Willard, 1115 Lynda Lane, Arlington

Reeves, Noble B., 3327 Winthrop

Riley, Wm. C., Jr., 3817 West Rosedale

Yacker, Laurance C., 3912 Hardeman

White, Laurance D., 500 Ft. Worth Club Bldg.

Associate Members (Out of Town)

Barr, Robert F., 2709 Tolosa Drive, Dallas 22, Texas

Bingham, Don A., 3808 Hiland Drive, Waco

Dudley, John R., 1101 Pembroke, Waco

Mosely, Benny, 3916 North 21A, Waco

Junior Associate Members

Brown, Tom, 7001 Dover Lane

Cecil Oscar Ben, 3524 Plymouth

Davis, Jerry C., 2404 Miriam

Greene, Henry L., Jr., 3612 Shelby Drive

Havard, Gary, 3628 Boyce

O'Toole, Charles L., 4617 Strong Avenue

Perkins, Robert I., 4916 Live Oak, Apt. 211, Dallas

St. Clair, Clyde, 4528 Rutland

Tonetti, Joe L., 2412 6th Ave.

Wharton, Paul C., 2017 Millcreek Dr.

Wright, Robert Lee, 3616 North Littlejohn

HOUSTON CHAPTER

Fellows

Barthelme, Donald, 6910 Fannin

Briscoe, Birdsell P., 1811 Crawford

Brown, Hamilton, 3270 Sul Ross

Calhoun, Harold E., 2506 Richton

Chillman, James, Jr., c/o Rice University

P.O. Box 1892

The Stamp of

APPROVAL



The stamp of approval is on Split-Stone and Brick Concrete Masonry Units made with SERVSAND.

We are proud to be supplying the uniformly colored, thoroughly washed, accurately graded, crushed limestone aggregate for this building stone which has earned such wide acceptance and approval by Architects, Engineers, Builders and Home Owners.

Other high quality products we supply: Near-White Roofing Stone, Asphaltic Concrete, Base Material, Topping Rock, Concrete Aggregate, Filter Bed Stone, Ballast, Rip-Rap, etc.

Let us serve you as we have our many satisfied customers since 1931.

SERVTEX MATERIALS COMPANY

P. O. BOX 729

MADISON 5-3457

New Braunfels, Texas

Finn, Alfred C., Sr., 1005 Bankers Mtg.
 Golemon, Albert S., 5100 Travis
 Kamrath, Karl, 2713 Ferndale Place
 Lloyd, Hermon, 4507 Mt. Vernon
 MacKie, Fred J., Jr., 2713 Ferndale
 McGinty, Milton, 2425 Ralph
 Nunn, Stayton, 3272 Westheimer
 Pierce, George F., Jr., 2200 Welch, P.O. Box 13319
 Rather, J. T., Jr., 2814 Virginia
 Rolfe, Walter T., 5100 Travis
 Staub, John F., 2814 Virginia
 Wilson, F. Talbot, P.O. Box 6216

Members Emeriti

Leibslle, Roy W., 2428 Southmore
 Lillioff, Richard W., Jr., 6 South Wynden
 Nutter, Arthur E., 609 Preston Ave.
 Salsbury, Hiram, The White Sands, La Jolla, Calif.
 Woodruff, Lewis J., 2914 West Lane

Corporate Members

Alexander, Woodrow W., 2712 Danville Ave.
 Amyx, Boone, 4824 South Main
 Anderson, R. A., Jr., P.O. Box 6216
 Andrews, Mrs. Lavone D., 228 Shadder Way
 Baer, David C., 1200 Bissonnet
 Barnstone, Howard, 630 Esperson Bldg.
 Barth, Clifford R., 502 N. Ave. A, Bellaire 101
 Belsler, H. E., 1529 Maryland
 Bentsen, Kenneth E., 3400 Montrose
 Biering, Robert O., 11602 Blalock Forest
 Bigbee, William L., 4604 Evergreen, Bellaire 101
 Bishop, James A., 6202 Simsdale
 Bodet, Edward, 3315 Graustark
 Bolton, Preston, 811 Lovett Blvd.
 Borget, Lloyd, 4519 West Alabama
 Branda, Gerald E., 2904 Ferndale
 Brodnax, A. Carroll, 6907 Alameda
 Broesche, Travis, 3271 West Alabama
 Brogniez, Raymond H., 3207 Mercer
 Buffington, Ralph M., 1710 Welch
 Bullock, Thomas A., Caudill, Rowlett & Scott,
 3636 Richmond Ave.
 Burleson, James E., 4001 Gulf Freeway, Suite 2143
 Bush, F. Woodrow, 827 Ridge Street
 Butler, John R., T. J. Bettes Co., P.O. Box 1328
 Cato, Claude R., 3223 Tampa
 Caudill, William W., 3636 Richmond Ave.
 Chan, Charles S., 403 Woodward
 Chase, Charles S., 2317 Bissonnet
 Chase, John S., 2916 Blodgett
 Clamens, Robert W., 401 South Richey St.
 Converse, Roger L., 4625 Pin Oak Lane, Bellaire 101
 Coogler, James D., Jr., 3526 Penwood Way
 Cowell, C. Herbert, 5419 Fannin, Suite 407
 Davis, Hal M., 2120 S. Post Oak
 Davis, James Allen, 301 E. Texas Ave., Baytown
 Demopolos, Dimitri, 7802 Del Monte
 DeZurko, Edward, c/o Rice University, P.O. Box 1892

Dill, Frank C., 1211 Hyde Park
 Dixon, Sam B., 110 E. 8th Street, Austin
 Doughtie, Symond E., 1015 E. Thomas, Pasadena
 Douty, Truman B., 16th Floor, Hermann Prof. Bldg.
 Dunaway, James K., 2706 Richmond
 Dunlap, Cecil N., 1811 Crawford
 Eichelberger, Dean A., 22 Chelsea Place
 Elkins, Hartzell, 3270 Sul Ross
 Elliott, Card G., Jr., 3203 Mercer, P.O. Box 22312
 Elliott, Justin M., 2814 Virginia St.
 Engberg, Arne G., 3110 Eastside St.
 Evans, Jonathan W., 3616 Main St.
 Fairchild, Cameron, 2626 West Dallas
 Fasullo, George, P.O. Box 7171
 Finn, Alfred C., Jr., 1005 Bankers Mtg. Bldg.
 Flanagan, Robert V., P.O. Box 13319
 Flynn, Arthur M., 3801 Kirby Drive, Room 311
 Flynn, Charles H., Jr., 3801 Kirby Drive, Room 311
 Frankfurt, Henry D., 337 Knipp Road
 Freeman, John, Jr., 1700 Main St.
 Furley, Edmund, Jr., 6907 Alameda
 Gabert, Lenard, 1315 Bell
 Gaffney, E. Kelly, 4132 Coleridge
 Gainey, John V., 3501 Allen Parkway, 1018 River
 Glyn Dr.
 Garrison, John F., Jr., 2910 Westheimer, Apt. #3
 Gaskill, Clinton R., Jr., 4141 North 10th, Abilene
 Gilbert, Earl R., 6026 Rose Ave.
 Glass, Frank R., 1716 Locust St., Meredith Publ. Co.,
 Des Moines, Iowa
 Goehring, Lloyd A., 2037 Norfolk
 Golden, Thomas M., 1973 West Gray
 Goodwin, Edwin James, Jr., 2200 Welch
 Gragg, Hugh E., 3927 Essex Lane
 Greacen, Thomas E., II, 500 Stuart St.
 Green, Marley C., 5417 Crawford
 Green, Wilbur E., Leakey
 Greenwood, Ben F., P.O. Box 20091
 Greeson, John A., 3270 Sul Ross
 Grobe, William C., 4804 Welford Dr., Bellaire 101
 Hardy, Robert L., 3122 Wroxtton Rd.
 Heath, H. C., 2314 Dunstan
 Heaton, James E., 5619 Overbrook
 Heidbreder, G. Allen, 2005 South Coast Bldg.
 Hightower, Charles E., 3215 Mercer
 Hill, Cal Dean, Jr., 4506 Birch, Bellaire 101
 Hoff, William B., 4900 Travis
 Hoffman, Henry S., 443 Hollow Drive
 Holdredge, William D., 5201 Fannin
 Howze, Albert H., 2814 Virginia
 Hubach, Carl C., 938 Westmont Dr.
 Jaccard, Mermood C., Jr., P.O. Box 1066, Angleton
 Jackson, R. Graham, 2506 Richton
 James, Allan K., 3813 Allen Parkway
 Jenkins, William R., 10002 Willow Grove
 Jenkins, Raymond L., 2622 Richmond
 Johnson, C. A., 3501 Allen Parkway

Johnston, F. Perry, Box 154, La Marque
 Jones, Roy William, 5402 Holly, Bellaire 101
 Jones, William P., 2706 Richmond
 Josserand, Louis, 3710 Mt. Vernon
 Keller, Theo F., 5619 Fannin St.
 Kelling, Herman A., 5511 Caucer
 Kerner, Charles H., 5100 Travis
 Kiefner, C. H., 3501 Allen Parkway
 King, Edward M., 2506 Ralph
 Kirk, Robert D., 3416 Roseland
 King, Robert L., 1109 Kipling
 Klein, Irving R., 1317 Austin
 Knapp, R. Logan, 10134 Whiteside Lane
 Knight, Earl R., 3601 S. Sandman, Suite 201
 Knostrman, Jack W., 4727 Westheimer
 Koetter, Gunter W., 2302 Richmond
 Krakower, Joseph, Conservation and Rehabilitation,
 Urban Renewal Administration, Region 5,
 Fort Worth
 Lammers, Lowell, P.O. Box 600, Baytown
 Langwith, John E., Jr., 1109 Kipling
 Lawrence, Charles E., Caudill, Rowlett & Scott,
 3636 Richmond Ave.
 Leifeste, A. A., Jr., 4810 Hazard
 Lent, Robert F., 5701 Jackson
 Lenzen, William R., 1202 Oak Lane Drive
 Linstaedter, Herbert W., 228 Buffon
 Maddox, H. Edward, Jr., 3501 Buffalo Drive
 Maguire, Lewis S., P.O. Box 12254
 Manning, Ernest V., 6615 Narcissus St.
 Marshall, Charles B., 3110 Eastside
 Martin, Milton Foy, 1811 Crawford
 Mattingly, Edward, 5417 Crawford
 Maurice, Robert W., 3222 Mercer
 Maze, Richard R., P.O. Box 231, Bellaire 101
 McCleary, Thompson, 3270 Sul Ross
 McGinty, Bradford Burke, 2425 Ralph St.
 McHale, T. George, 505 Stuart
 McKim, Charles M., 6907 Alameda
 Merrill, Edward A., 1010 Milam St.
 Moore, Harvin C., 2037 Lexington
 Moore, Theron L., 2506 Ralph
 Morehead, James C., Jr., P.O. Box 1892
 Moreland, Rembert B., 2506 Richton
 Morgan, William B., 4507 Mt. Vernon
 Morris, Ray, Jr., 10606 Chimney Rock
 Morris, S. I., Jr., P.O. Box 6216
 Mulvey, Carl A., 1652 West Main
 Neuhaus, Hugo V., 5619 Fannin Street
 Neuhaus, J. V., III, 3221 West Alabama
 Northrop, J. W., Jr., 3940 Main
 Northrup, Page H., 3940 S. Main
 Nunn, Stayton, Jr., 906 San Jacinto Bldg.
 Pannell, Victor E., 9822 Woodwind Drive
 Peseur, Charles H., 8723 Nairn

- Barlite Concrete Blocks
- Barlite Lightweight Concrete Aggregate
- Ready-Mix Concrete
- Sand and Gravel Concrete Aggregate
- Colored Building Stone
- Colored Catalina Blocks
- Sacked Mortar Mix
- Sacked Concrete Mix



concrete products of

Barrett Industries

main office and plant: 2718 Southwest Military Dr. • WALnut 2-1271 • San Antonio, Texas

Paul, Theodore, 401 Louisiana, Room 801
 Payne, Harry D., P.O. Box 22311
 Pena, William M., Caudill, Rowlett & Scott,
 3636 Richmond Ave.
 Phenix, Vance D., 2425 Ralph
 Pierce, Abel B., Jr., 2200 Welch, P.O. Box 13319
 Porterfield, Jack M., 1015 E. Thomas, Pasadena
 Potter, Edward P., 3607 Greenway Court
 Price, Thomas M., 1227 Ave. L, Galveston
 Pryzant, Julius L., 2506 Ralph
 Ransom, Harry S., 3763 Ingold
 Rapp, Raymond R., Jr., 417 Stewart Bldg., Galveston
 Reber, Jack M., 8411 Timberside
 Red, David C., 3801 Cullen Blvd.
 Reed, Mack Gray, 2626 Westheimer
 Reichert, Edward L., 2037 Norfolk
 Reynolds, John C., 6837 Hazen
 Reynolds, Joseph B., 103 American Capitol Ins.
 Bldg., 3130 Southwest Freeway
 Rick, Robert G., 604 E. Goodwin, Victoria
 Riggs, Hal Don, 5416 Braeburn Dr., Bellaire 101
 Rosenberg, Adrian, 1110 Bissonnet
 Rowlett, John M., Caudill, Rowlett & Scott,
 3636 Richmond Ave.
 Rustay, George, 1811 Crawford
 Sandlin, Ernest Lee, 5931 Southridge
 Schroeder, Edwin A., 1202 Dennis
 Scott, Wallie E., Caudill, Rowlett & Scott,
 3636 Richmond Ave.
 Sheppard, Albert E., 306 West Cowan Dr.
 Sikes, Charles R., Jr., 12314 Perthshire
 Simmons, Robert Bruce, 5931 Belfort
 Sjolín, Gosta, 3616 Greenbrier
 Skislewicz, Anton, 1434 Du Pont Bldg., Miami
 32, Florida
 Smart, George H., 2703 Kipling
 Smith, Oliver H., 3931 Essex Lane
 Sproghe, Paul H., 104 Bellaire Court, Bellaire 101
 Stuermer, Adolph D., 1020 M. Jefferson, San Angelo
 Sullivan, Charles F., 2901 Travis
 Swanson, James T., Jr., 3110 Eastside
 Swenson, Bailey A., 3106 Brazos
 Symonds, Walter S., Jr., 5610 Whitehaven, Bellaire 101
 Tapley, Charles R., 1216 Hawthorne
 Talley, Robert W., 805 Lovett Blvd., Suite 203
 Tamminga, William, 5800 Lookout Mt. Rd., Austin
 Taylor, Harold W., 3701 Allen Parkway
 Taylor, Harwood, 3221 W. Alabama
 Tharp, B. Carroll, 2302 Richmond
 Tillinghast, Josh, 2515 Sage Road
 Todd, Anderson, 1200 Bissonnet
 Tungate, Mace, Jr., 2506 Richton
 Turner, Harry A., 2502 Robinhood
 Ulbricht, Herbert H., 1700 Main St.
 Vale, Wylie W., 517 West Gray
 Voelcker, Herbert, 3701 Allen Parkway
 Walton, Richard B., 3201 Sage Road, Suite #2
 Wauson, Horace Cecil, Jr., 3767 Elmore
 Webster, James F., Jr., 4727 Westheimer
 Wells, Oscar E., Jr., 2344 Wroton Road
 Werlin, Eugene, 3501 Allen Parkway
 Whitehead, Thomas P., 2703 Kipling
 White, Emory S., 3110 Eastside St.
 Williams, Allen R., 4403 Ivanhoe
 Wilson, Charles B., 1109 Kipling
 Wilson, R. H., Jr., 4311 Bettis
 Winslett, H. R., 3927 Essex Lane
 Wirtz, L. Milton, 2506 Richton
 Wisdom, William J., 1418 Marshall
 Woestemeyer, Otto, 4210 Montrose Blvd.
 Wootters, L. B., 2706 Richmond Ave.
 Youens, Ernest L., 5418 Brae Burn, Bellaire 101
 Young, Baldwin N., 4000 Westheimer
 Zander, Ralph A., 7811 Chevy Chase Dr.
 Associates
 Bartlett, B. B., 2735 Steel
 Beerman, Tibor, 1006 Blvd., Galveston
 Boddeker, Edward W., Jr., 3722 Glenhaven
 Brailas, Alexander, 8722 Ferris
 Cannata, Anthony C., 743 E. 8 1/2 St.
 Cole, Harry A., 5510 Nassau Road
 Crow, Donald H., 4406 Holt, Bellaire 101
 Cutting, Malcolm M., 10019 Moonlight Drive
 Deane, Walter L., 4614 Saxe Ave.
 Denny, Clifton E., Jr., 1533 Caywood
 Deshayes, Joseph Robert, P.O. Box 13319
 DuBose, Jean L., 7810 Del Monte Dr.
 Dvorak, Miss Helen Ann, 6125 Washington
 Evans, Richard S., 3520 Montrose
 Gillfillan, Miss Freda Jane, 4333 Clay
 Harris, Weldon L., 1214 Miramar St.
 Hines, E. Gene, P.O. Box 20091
 Horton, Harold B., 5008 Alameda, Suite 2
 Jones, Miss Betty Jo L., 402 Branard
 Kotch, Marion A., 11119 Wickway
 Joiner, John E., #1 N. Branard Ct.
 Lake, William E., Jr., 3940 Main Street
 Maas, Miss Elaine, 3202 Revere, Apt. C
 Maxwell, Jacques R., 5214 Malmady
 Morales, Richard V., 10714 Checkerboard
 Newton, Aley W., Jr., 407 Avondale
 Plesner, Eric H., 4049 Nenana
 Reber, Albert A., P.O. Box 345, Wharton
 Ridgeway, Ann, 4110 Guadalupe, Austin
 Robinson, Thomas A., 535 West 32nd
 Rodgers, Tom K., 5429 Pagewood
 Van Ness, John Bishop, Jr., 4418 Merwin
 Walton, Conrad Gordon, 1309 Bomar
 Wilkins, Richard S., 2627 Talbot
 Wingfield, B. Magruder, 811 Lovett Blvd.
 Wisenbaker, Howard R., Jr., 8016 Meadowbrook
 Junior Associates
 Bell, Jacque F., 1119 Bay Oaks Road
 Bernstein, Larry, 2903 Richmond Ave.
 Berry, James R., 5905 Grape Road
 Brochstein, Raymond D., 3416 Yoakum Blvd., Apt. E
 Chaskin, Meyer, 10927 Cedarhurst
 Cooper, James Barrett, 1647 Cortlandt
 Crockett, David W., 1421 Glourie
 Crow, Donald H., 4406 Holt, Bellaire 101
 Cummins, Ira Keith, 1324-5th Ave., Texas City
 Doyle, J. Pleasants, 2106 Hazard
 Dunn, Joseph G., 5035 Jackwood
 Duson, Walter W., 2323 McClendon
 Galloway, Mrs. H. R., 3505 Bissonnet
 Gillette, Ray W., 4618 Park Court, Bellaire 101
 Goree, Fred H., Jr., 1529 Early Lane

TEXAS CONCRETE WORKS

Manufacturers of

AUTOCLAVED

LIGHTWEIGHT AND CONCRETE MASONRY UNITS

also

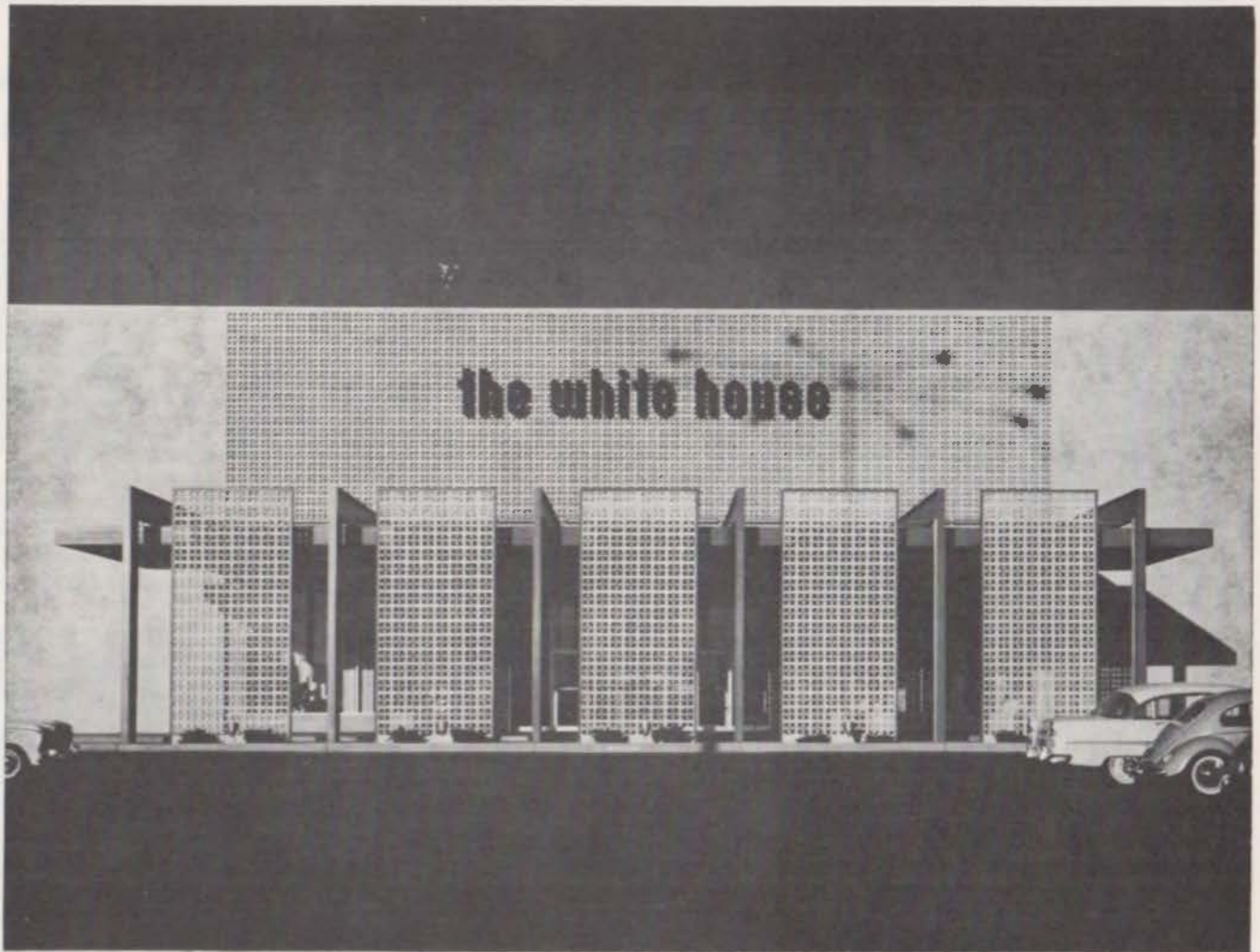
CONCRETE CULVERT AND SEWER PIPE

EVERYTHING MADE TO ASTM SPECIFICATIONS

Box 1787

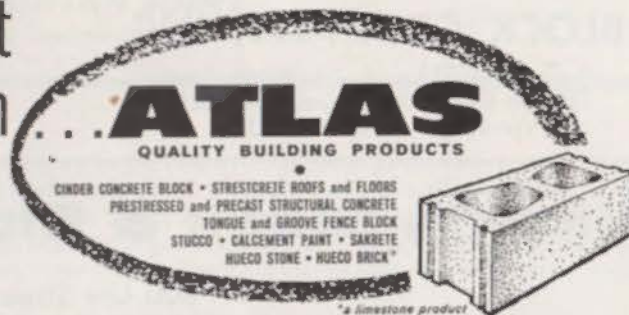
WACO

Telephone PL 2-3421



Bartlett Cocke & Associates, Architects, San Antonio, Texas

for beauty . . .
 for durability . . .
 you can
 always
 count
 on



CINDER CONCRETE BLOCK • STRESCRETE ROOFS and FLOORS
 PRESTRESSED and PRECAST STRUCTURAL CONCRETE
 TONGUE and GROOVE FENCE BLOCK
 STUCCO • CALCEMENT PAINT • SAKRETE
 HUECO STONE • HUECO BRICK*

*a limestone product

THE ATLAS BUILDING PRODUCTS CO. • 200 NORTH GLENWOOD DRIVE • EL PASO, TEXAS

Gutierrez, Daniel R., 1252 Martin Drive
 Hackney, John H., 2005 Wroxton Road
 Hughes, James M., 6446 Sawnee
 King, Robert E., 3774 Purdue St.
 Lancer, Robert W., 11906 Knippwood Lane
 Lee, Frederick A., 2110 Watts Road
 Levy, Morton L., Jr., 4758 Kingfisher
 McBride, James A., II, 2003 Bancroft #8
 McKnight, John L., 1632 Bonnie Bree
 Modrall, A. William, Jr., 6126 Reamer St.
 Mount, Howell E., 1733 Duna Way
 Munroe, William A., 7311 Schiller St.
 Root, Donald J., 2111 Midlane, #7
 Segura, Fernando H., 2315 West Main
 Snyder, Robert W., 4144 Anita
 Squibb, Miss Jane C., 4802 Willow, Bellaire 101
 Weaver, T. M., #421 Burkhardt

**LOWER RIO GRANDE VALLEY
 CHAPTER**

Member Emeritus

Ellis, C. Lyman, Sr., 305 East Jackson, Harlingen
Corporate Members

Ashcroft, David Patrick, 822 Pecan, McAllen
 Baxter, William C., Pioneer Building, Weslaco
 Bowman, Walter C., 1220 W. Harrison Street,
 Harlingen
 Buck, Robert Vincent, 202 First National Bank Building,
 McAllen
 Croft, Charles Benjamin, 1802 Laurel Dr., Harlingen
 Drennan, Odus Edger, Jr., 202 First National Bank
 Building, McAllen
 Hiestler, J. W., 1801 Central Boulevard, Brownsville
 Hobart, Gene Perry, 320 South Missouri, Mercedes
 Rike, Zab V., 1101 Vine Avenue, McAllen
 Swanson, E. Lester, 1220 West Harrison, Harlingen
 Taniguchi, Alan Yamato, 1426 West Highway 77,
 Harlingen
 Summers, B. McIntosh, 1700 South Tenth, McAllen
 Sufer, Warren C., P.O. Box 255, Mission
 Tucker, H. Leo, Box 614, Weslaco
 Vaiten, Robert Edwin, 1345 Coral Court, Brownsville
 Wilhite, Gayle, 243 East Levee Street, Brownsville

Associate Members

Barnett, Fred W., 1102 South Kansas, Weslaco
 Guerra, Julio Rafael, Pioneer Building, Weslaco
 Hancock, J. B., 1101 Vine Avenue, McAllen
 Lambeth, William H., 1128 Austin Avenue, Harlingen
 McKittrick, T. L., First National Bank Building,
 McAllen
 Reed, Lyman S., 1801 Central Boulevard, Brownsville

LUBBOCK CHAPTER

Corporate Members

Atcheson, James E., 1009 Texas Ave.
 Atkinson, Atmar L., 1009 Texas Ave.
 Barrick, Nolan E., Texas Tech College
 Billingsley, G. Randolph, 422 Lubbock Natl. Bldg.
 Bradshaw, W. L., Texas Tech College
 Brasher, Herbert, 2118 34th St.
 Burns, Billy D., 4503 Avenue Q
 Cantrell, Bill W., 4503 Avenue Q
 Cartwright, Edward W., Jr., 1009 Texas Ave.
 Childers, Carl J., Texas Tech. College
 Clark, James I., Texas Tech College
 Craig, Calvin C., Jr., 3134 34th St.
 DeWitt, Talmage, 804 Avenue J
 Dryer, Hugh C., Jr., All-Amer. Sec. Life Bldg.
 19th & Avenue M

Duran, Richard, Texas Tech College
 Goyette, Robert L., 2118 34th St.
 Haynes, S. B., 1902 Dixie Drive
 Hall, Joe H., 2114 Avenue J
 Jordan, Wesley, 1203 College Ave.
 Kirby, Laverne Howe, 1902 Dixie Drive
 Kirkwood, Jerry, Texas Tech College
 Kleinschmidt, F. A., Texas Tech College
 Lockard, Robert I., Texas Tech College
 MacCollin, Edmond M., Texas Tech College
 McMurtry, Edward Hoyse, 3134 34th St.
 Megert, Karl A., Jr., 2329 50th St.
 Messersmith, Robert C., 3307 Avenue X
 Pierce, Henri Deane, 3402 Avenue R
 Riherd, Hermann B., 412 Avenue M
 Roberts, Evan E., Jr., 3307 Avenue X
 Schmidt, Howard W., 1602 Avenue Q

Spencer, Ralph D., 804 Avenue J
 Stiles, Marvin L., 3307 Avenue X
 Stracener, Bill, 422 Lubbock Natl. Bldg.
 Stuart, John S., 1602 Avenue Q
 Whitaker, Sanford, 2114 Avenue J

Associate Members

Boggs, James B., City Planning Dept., Box 2000
 Higgins, Richard H., 422 Lubbock Natl. Bldg.
 Johnson, Clarence F., Jr., 3134 34th St.
 Mills, Thomas M., Jr., 2118 34th St.
 Rapier, Robert E., 2118 34th St.
 Sessions, Henry A., Jr., 1602 Avenue Q
 Tisdal, Clarence Berwyn, 1602 Ave. Q

NORTHEAST TEXAS CHAPTER

Corporate Members

Allen, Robert E., 408 Petroleum Building, Longview
 Bell, O. N., 922 Olive Street, Texarkana
 Bellomy, Cleon C., P.O. Box 87, Tyler
 Bintliff, Mrs. Ann Humphrey, 922 Olive St., Texarkana
 Bruch, Arthur Lee, 2021 Crestwood, Tyler
 Cafes, Jack, Backham-Terrace Building, Tyler
 Cafes, Melvin J., P.O. Box 241, Tyler
 Cox, John V., 413 Texarkana National Bank Building,
 Texarkana
 Crain, Bluford W., Jr., P.O. Box 3526, Longview
 Deteau, Harold, 913 Judson Road, Longview
 Gohmert, Louis B., P.O. Box 10, Mount Pleasant
 Gregory, Carl A., 1013 Wilma Street, Tyler
 Guinn, Leland A., P.O. Box 149, Longview
 Hazelwood, Otis L., P.O. Box 199, Palestine
 Hoover, Joseph Allen, 219 1/2 East Houston Street,
 Marshall
 Jaudon, Charles Wendell, 219 1/2 East Houston Street,
 Marshall
 Kelley, Will Lee, 913 Judson Road, Longview
 Kent, Wilbur C., 404 Perry Building, Lufkin
 Maffitt, Theodore S., Jr., 510 North Sycamore,
 Palestine
 Marsellos, Floyd A., 404 Perry Building, Lufkin
 Moore, John E., Jr., 413 Texarkana National Bank,
 Texarkana
 Pate, Charles J., 202 1/2 West Erwin, Tyler
 Ray, Sidney, 838 Petroleum Building, Tyler

THREE PLANTS

*To Serve You in the
 Ft. Worth - Dallas - North Central Texas Area*



LONE STAR STONE & BLOCK, INC.

P. O. Box 368
 Saginaw, Texas
 Phone
 MA 4-8438

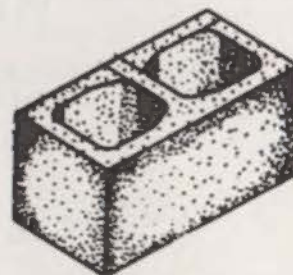
8"
 Alamo Brick

12"
 Norman Brick
 Decorative Blocks

16"
 Longhorn Stone

Fort Worth
BLOCK COMPANY, INC.

P. O. Box 10237 Ft. Worth, Texas
 Phones CI 6-2481 — Dallas AN 4152
 Versatile, Volume Stable Units



Wichita Block & Stone Co., Inc.

800 Lee Street

Wichita Falls, Texas

Phone 322-6752

FLUSH WELDED PRODUCTS

IMPORTANT NEWS! ECONO-LOK®



THE B.O.C.A. APPROVED BONDER
(Building Officials Conference of America)
FOR COMPOSITE MASONRY WALLS

ELIMINATE BRICK HEADERS
CONTROL CRACKING IN BLOCK BACK-UP
(Both Face Shells Shrink Equally.
Both Face Shells Must Be Reinforced)
ACHIEVE HOMOGENOUS BOND
(Reinforcing wires in Both Face Shells
provide Double Bond into Back-Up)



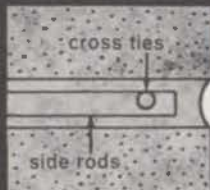
Made of all 3/16" wire or all #9 wire. Made in 12 foot lengths with 4" wide box ties 16" O.C. (9 ties per length). Available finish: Galvanized box ties with brite basic side rods; all mill galvanized wire; hot-dipped galvanized after fabrication.

Now available, reinforcements that provide maximum bond and strength for any mortar joint:

ACTUAL SIZE



11 gauge



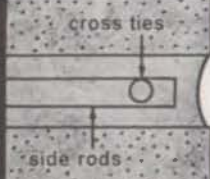
THIN JOINT FOR THE 1/4" MORTAR JOINT

#11 ga., .120 dia. longitudinal wires; #12 ga., .1055 dia. cross ties.

ACTUAL SIZE



9 gauge



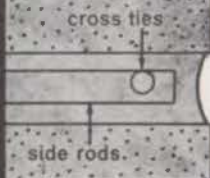
STANDARD BLOK-LOK® FOR 3/8" MORTAR JOINT

#9 ga., .148 dia. longitudinal wires; #9 ga., .148 dia. cross ties.

ACTUAL SIZE



8 gauge



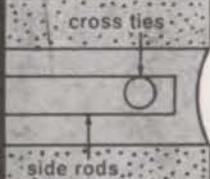
F. S. STANDARD BLOK-LOK FOR 3/8" MORTAR JOINT

#8 ga., .162 dia. longitudinal wires; #9 ga., .148 dia. cross ties.

ACTUAL SIZE



3/16"



HEAVY DUTY BLOK-LOK FOR THICK MORTAR JOINT

3/16" longitudinal wires; #9 ga., .148 dia. cross ties.

BLOK-LOK
plants in
Chicago, Illinois;
Dallas, Texas and
Toronto, Canada



Reinforcement is effective only if it is in bond. An increase in the cross sectional area of knurled reinforcement (AA Wire reinforcement side rods knurled 75% of perimeter) results in increased bond if mortar coverage is adequate (see Hunt Laboratory report; available on request). A good rule of thumb for adequate mortar coverage is that the thickness of reinforcement should not exceed one-half the thickness of the mortar joint.

© Reg. U.S. Pat. Off. © 1962 AA Wire Products Company

BLOK-LOK® OF TEXAS, INC. (Division of AA Wire Products Company)

1331 Dragon Street

DALLAS 7, TEXAS

Reinheimer, Robert J., 413 Texarkana National Bank Building, Texarkana
 Rodgers, George R., 501 Marshall National Bank Building, Marshall
 Simons, Shirley, 1723 South Broadway, Tyler
 Simons, Shirley, Sr., 1723 South Broadway, Tyler
 Thomas, Joe, Jr., 413 Texarkana National Bank, Texarkana
 Wilcox, E. Davis, P.O. Box 87, Tyler
 Associate Members
 Bowles, Robert W., Route 4, Box 760, Marshall
 Emberton, John, 413 Texarkana National Bank, Texarkana
 Evaldo, Jose, P.O. Box 1249, Longview
 Evans, Joe M., P.O. Box 243, Longview
 Smith, Langston, Jr., 1415 Troup Road, Tyler

NORTH TEXAS CHAPTER

Corporate Members

Dixon, J. G., Jr., 913-B Indiana, Wichita Falls
 Elam, Eugene E., 1501 Brook, Wichita Falls
 Killebrew, James R., 1710 Dayton, Wichita Falls
 Pardue, Robert B., 1901 10th Street, Wichita Falls
 Pond, Paul, 2123 Brook, Wichita Falls
 Roberts, Joe B., 3113 Sherwood, Wichita Falls
 Sharp, Allen C., 1717 10th Street, Wichita Falls
 Wingler, Robert L., 1717 10th Street, Wichita Falls

Jr. Associate Members

Bellamy, Bill, 2123 Brook, Wichita Falls
 Caffee, Charles R., 2123 Brook, Wichita Falls
 Lambert, Sidney, 1901 10th Street, Wichita Falls
 Maloney, Michael, 1501 Brook, Wichita Falls
 Ricks, Donus W., 1501 Brook, Wichita Falls
 Rucker, Ronnie, 1501 Brook, Wichita Falls
 Spaulding, Don, 2123 Brook, Wichita Falls
 Staley, Conrad, 913-B Indiana, Wichita Falls

TEXAS PANHANDLE CHAPTER

Corporate Members

Bailey, Jim, 1008 West 10th St., Amarillo
 Bliss, Edward N., P.O. Box 1524, Amarillo
 Boren, Thomas M., 1707 W. 8th St., Amarillo
 Cantrell, B. R., 1711 Avondale, Amarillo
 Carder, Macon O., 2801 Ong St.

Carlander, Guy A., P. O. Box 3158, Amarillo
 Ensign, M. Howard, 1312 W. 15th St., Amarillo
 Fowler, W. Henry, 1312 W. 15th St., Amarillo
 Hannon, John L., Amarillo Bldg., Amarillo
 Hollar, Willie Eugene, 512 W. Kingsmill St., Pampa
 Hucker, Robert E., 413-B W. 10th St., Amarillo
 Kaufman, W. R., Jr., 2760 Duniven Circle, Amarillo
 Kerr, John C., 304 Broadway, Plainview
 Megert, Russell A., 1000 Fisk Bldg., Amarillo
 Mitchell, Harold Dee, 1309 W. 8th, Suite III, Amarillo
 Murchison, J. D., 2701-A Duncan, Amarillo
 Newberry, Merwin R., 618 W. 16th, Amarillo
 Notefine, John W., 1707 W. 8th, Amarillo
 Parge, Earl W., 413-B W. 10th, Amarillo
 Rittenberry, James, 114 E. 15th St., Amarillo
 Russell, Billie Joe., 5307 Alvarado, Amarillo
 Shiver, Clayton, 1000 Fisk Bldg., Amarillo
 Short, George W., 4306 Wolflin, Amarillo
 Vaughan, Arthur E., 2708 Westhaven Shopping Cen., Amarillo
 Ward, John S., Jr., 2750 Duniven Circle, Amarillo
 Work, John P., 2701-A Duncan, Amarillo
 Wossum, Luther E., P.O. Box 3281, Amarillo
 Schell, William J., 1402 W. 12th, Amarillo
 Associate Member
 Wilson, James A., 1000 Fisk Bldg., Amarillo

SAN ANTONIO CHAPTER

Members Emeriti

Deweest, Dahl, 1441 West Magnolia
 Dielmann, Leo M. J., Sr., 801 East Guenther Street
 Hays, Ernest B., 406 East Huisache Avenue
 Simons, Malcolm G., 521 Aztec Building
 Spillman, Beverly W., 104 Mandalay Drive

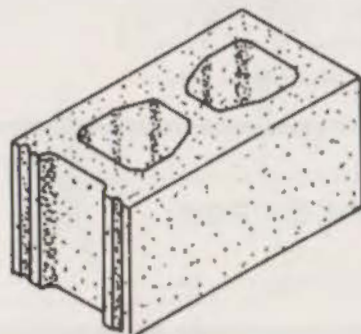
Fellows

Ayres, Atlee B., P.O. Box 8237
 Cameron, Ralph H., 1519 Transit Tower
 Cocke, Bartlett, 3501 Broadway
 Ford, O'Neil, 528 King William
 Smith, Harvey P., Sr., 117 El Prado Drive West

Corporate Members

Adams, Carleton W., Sr., P.O. Box 21100
 Allen, Craig, 1138 Basse Road

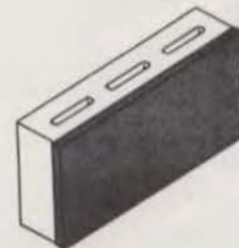
Anderson, Alvin Walter, 3707 Broadway
 Ayres, Robert M., P.O. Box 8237
 Bueuz, J. Fred, 4900 Broadway
 Buttrill, Lee R., Petroleum Center, 900 Military Dr., N.E.
 Callins, Peter, 204 Olmos Drive
 Carrington, Philip S., 4400 Broadway
 Cowan, Robert W., 8703 Broadway
 Dennis, Wilbur Edwin, 342 West Woodlawn
 Dielmann, Leo M. J., Jr., 8339 San Pedro Avenue
 DiStefano, Christopher, 1705 East Mesquite Lane, Victoria
 Eichenroht, Marvin, 702 Maverick Building
 Eiserloh, Harold L., P.O. Box 8127
 Freeborn, Elmer I., 5307 Broadway
 Harber, Col. Wm. V., 324 Melrose Place
 Harris, Bernard P., 3240 McCullough Avenue
 Hein, J. Harris, 218 West Craig
 Halmke, Vernon L., 1138 Basse Road
 Hesson, Paul Anthony, 148 West Olmos Drive
 Hohlaus, L. M., 3501 Broadway
 Johnson, Bruce B., 900 N. E. Military Drive, Building D, Room 202
 Jones, William D., 905 National Bank of Commerce Building
 Julian, Alvin Joseph, 222 East Guenther Street
 Kellner, Herbert E., 406 Austin Highway
 Lansing, Douglas M., P.O. Box 8127
 Lord, Sidney C., Jr., 5307 Broadway
 Marmon, Harvey V., Jr., 905 Natl. Bk. of Commerce Building
 Martin, Brooks, 122 Downing Drive
 Mathis, Arthur, Jr., 2002 N. St. Marys
 May, Allan Frank, 148 W. Olmos Drive
 Mok, Edward, 610 Royal Court
 Nicholson, H. E., 1102 Basse Road
 Noonan, Thomas Addis, P.O. Box 8308
 Phelps, Raymond, Jr., P.O. Box 8127
 Pounders, W. R., Jr., 603 W. Huisache
 Rinard, Clarence, 1526 Alamo National Building
 Roberts, Reginald H., 2600 McCullough Avenue North
 Rogers, Gerald R., P.O. Box 8308, Laurel Heights Sta.
 Rushing, Tupton Bryce, Jr., 302 Rilla Vista Drive



Autoclaved
 Lightweight

Telephone
 FEderal 1-6588

**QUALITY
 CONCRETE
 MASONRY
 PRODUCTS
 SINCE 1927**



Spectra-Glaze

GLAZED BLOCKS

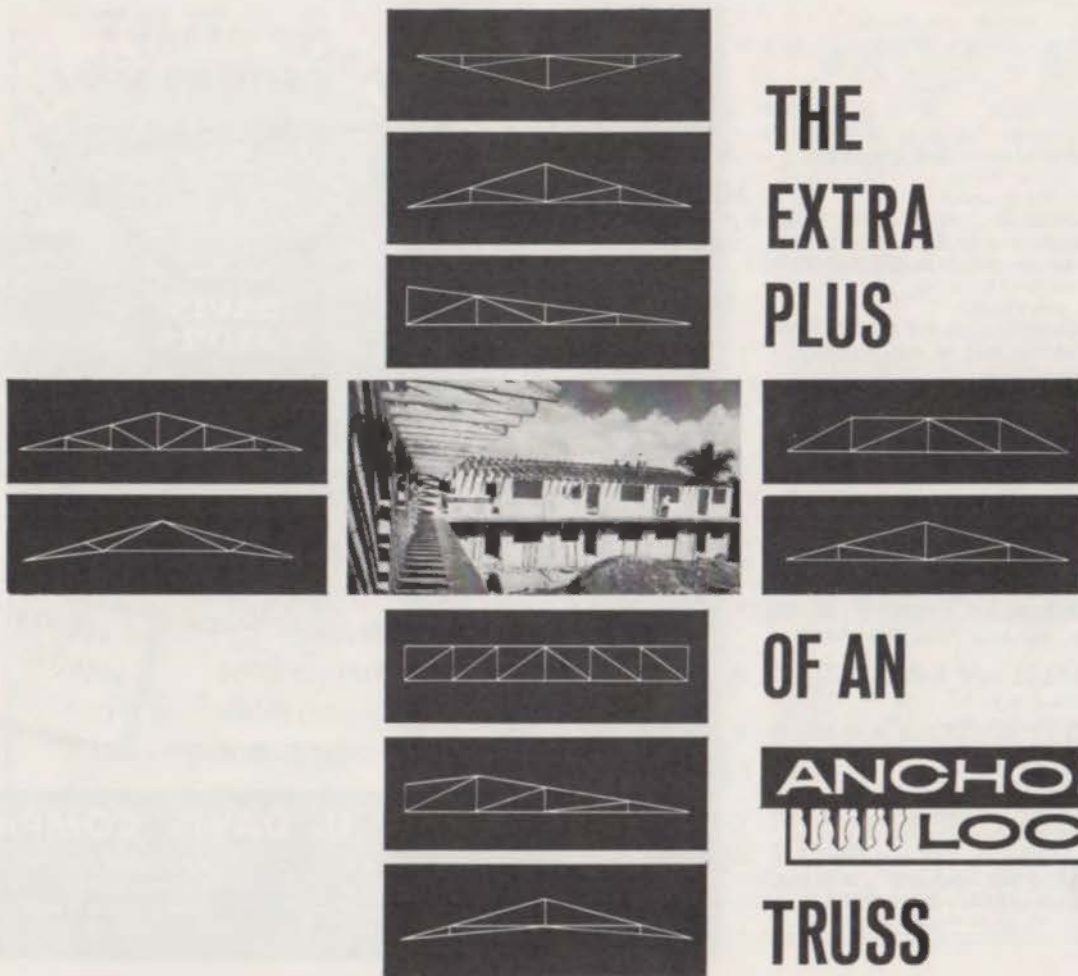
TRUCK DELIVERY TO
 NORTH TEXAS POINTS

NOLAN BROWNE COMPANY

3815 Singleton Blvd.

P. O. Box 575

Dallas 21, Texas



**THE
EXTRA
PLUS**

OF AN

**ANCHOR
LOCK**

TRUSS

- GREATER EFFICIENCY** - speed construction... while decreasing costs.
- GREATER ECONOMY** - save money, time and labor... no wasted materials.
- GREATER VERSATILITY** - tailor-made to your design for all forms of roof construction.
- GREATER DURABILITY** - strength-tested by Pittsburgh Laboratories... accepted by VA and FHA... no fiber damage.

Pre-fabricated trusses using ANCHOR LOCK's proven system have opened new vistas in design and building. They are continuously tested for the ultimate in strength and durability. With ANCHOR LOCK's patented design, you can add new beauty in interior design and room layout. You achieve structural rigidity with more strength than ever before. You eliminate sagging ceilings. ANCHOR LOCK trusses fit perfectly... position quickly. Specify the very finest in "truss-worthy" roof trusses!



**ANCHOR
LOCK**

OF TEXAS, INC.

6021 EAST ROSEDALE / FORT WORTH, TEXAS / GL 1-5881 - AREA CODE 817
ENGINEERING OFFICE / ANCHOR LOCK OF FLORIDA, INC. / 1950 N. 30th AVE., HOLLYWOOD, FLA. / YU 9-0287 - AREA CODE 305

Write for information and name of the distributor nearest you

Ryan, Milton A., 401 Elizabeth Road
 Schmidt, Jeremiah, P.O. Box 249, New Braunfels
 Schultze, Richard, 117 El Prado Drive West
 Sellinger, Gerald M., 102 Dawnridge Drive
 Shoop, Phillip L., 122 W. Olmos Drive
 Simmons, C. C., P.O. Box 8127
 Snyder, Robert W., 4144 Anita
 Steinbomer, Henry, 8118 Broadway
 Thomas, Wallace S., 7007 San Pedro
 Thompson, Thomas B., 4900 Broadway
 Tuggle, Emmit R., 531 Elmhurst
 Valdez, Frank M., 1818 San Pedro
 Straten, Richard Vander, Box 4643, Alamo Heights Sta.
 Wagner, Cyrus H., 204 Olmos Drive, W.
 Walker, John R., Jr., 4600 Broadway
 Walther, Henry Robert, 800 Navarro St., Suite 220
 Waters, R. Newell, 204 First Natl. Bk. Bldg., Weslaco
 White, Don N., 222 East Guenther
 Whiteaker, James E., Jr., 1818 Nacogdoches Road
 Williams, Joe Carroll, Jr., 2403 North Main Ave.
 Williams, Lt. Col. Macon G., 218 Blakeley Drive
 Wong, William King To, Jr., 431 East Mulberry St.
 Wyatt, Benjamin K., P.O. Box 199
 Zisman, Samuel B., 528 King Williams Street

Associate Members

Barclay, A. T., Jr., 152 Harmon
 Barney, Robert E., 606 Glencrest Drive
 Baum, Louis Frederick, Jr., 209 San Pedro Avenue
 Bender, Ralph G., 414 Erskine
 Callaway, Robert W., Petroleum Center, 900 Military Drive, N.W.
 Dempsey, Charles P., Suite 202-D, Petroleum Center, 900 Military Drive, N.E.
 Flowers, Elisha B., 406 Elizabeth Road
 Garcia, Paul L., 309 University Avenue
 Gonzales, Mario Flores, 509 Howard
 Jersig, John E., P.O. Box 8127
 Ledford, H. Demming, 6934 San Pedro
 Powell, Victor B., 1315 East Mulberry, Apt. 4B
 Redondo, Edwin F., 319 Glenview Drive, East
 Simons, Harold Leroy, 831 West Summit
 Smith, Harvey P., Jr., 117 El Prado Drive, W.
 Stevens, Robert E., Jr., 417 North Virginia Street, Port Lavaca



- Optimum in quality control
- Easy to specify exact color desired
- Far wider range of shades available
- Least expensive method to color concrete

**ASK FOR OUR
 ARCHITECT'S FILE
 A.I.A. FILE No. 3-K**

FRANK D. DAVIS COMPANY

MAIN PLANT

3285 East 26th Street
 Los Angeles 23, California
 ANgelus 9-7311 Area Code 213

EASTERN PLANT

450 Metuchen Road
 South Plainfield, New Jersey
 Plainfield 7-2300 Area Code 201

THE TREND IS TO BLOCK CONSTRUCTION

and

More Architects are "Swinging"

to Featherlite Masonry

FROM

We also manufacture Hacienda Ledgerstone in Eight Beautiful Colors for Residential Construction.

VALLEY BUILDERS SUPPLY, INC.

1/8 Miles East State Hwy.

PHARR, TEXAS

STERling 7-1222

**"TEXAS'
FINEST
IN THE
TERRAZZO
FIELD"**



**TEXAS
TERRAZZO
CONTRACTORS
ASSOCIATION,
INC.**

AMARILLO

ZANCHETTIN BROS. TERRAZZO & TILE CO.

DALLAS

TEXAS TERRAZZO COMPANY
AMERICAN TERRAZZO COMPANY
COLFRY BROS. - TERRAZZO CONTRS., INC.

FORT WORTH

COLFRY TERRAZZO COMPANY
FT. WORTH TERRAZZO COMPANY
CULLEN Y. TURNER COMPANY

GALVESTON

GALVESTON ART TILE CO., INC.

HARLINGEN

MION TERRAZZO TILE & MARBLE CO.

HOUSTON

AMERICAN MARBLE MOSIAC COMPANY
ANDREW BERTIN TERRAZZO CO.
MARTINI TILE & TERRAZZO CO., INC.
NARCISO TILE & TERRAZZO CO.
NATIONAL TERRAZZO & TILE CO.
TONY PASSANO TERRAZZO CO.
PONTELLO TILE & TERRAZZO CO.
TEXAS STATE TILE & TERRAZZO CO., INC.

LUBBOCK

ART TILE & TERRAZZO COMPANY

PHARR

SOUTH TEXAS TERRAZZO & TILE CO.

SAN ANTONIO

CARDELLI TERRAZZO COMPANY
VENICE ART TERRAZZO CO., INC.

FIELD DIRECTOR N. T. M. A.

CLARENCE E. MOORE, 1966 TERBET LANE
FORT WORTH 12, TEXAS, PH- 611-1241



The Emblem of A Quality
Manufacturer

**LITE-CRETE MASONRY
UNITS**

by

**TEXARKANA CONCRETE PRODUCTS
COMPANY, INC.**

P. O. BOX
895

TEXARKANA
U.S.A.

TELEPHONE
793-4647

Westbrook, Lloyd E., 144 Thorain
 Wilson, Lawrence E., 905 National Bank of Commerce
 Building
 Wilson, Robert W., Jr., 4711 Blanco Road
 Junior Associates
 Aiken, Howard A., 107 Sabyan Drive
 Carrillo, Miguel, 4900 Broadway, Room 206
 Crellen, Robert Earl, 421 Bryn Mahr Drive
 Dockery, James W., Jr., 231 Kate Schenck
 Earnest, Harry W., 850 Cravens
 Fraser, John Gibb, 515 Dawnview Lane
 Golla, Emil, 421 Cloverleaf #3
 Janssen, Herman Phillip, 314 Altgelt
 Jary, Lloyd, Jr., 406 Tophill Road
 Johnson, Kirk, Jr., 123 Redrock
 Ludwig, Frederick F., 235 Bretton Wood Drive
 Morkovsky, Robert E., 117 E. Prado Drive West
 Pressly, James B., 119 Denton Drive
 Pressly, Thomas Alexander, Jr., 275 Retama Place
 Rast, Edward, 2170 W. Summit
 Simpson, Ralph, 280 Retama Place
 Torres, Ignacio L., Jr., 148 Olmos Drive
 Vargas, Tom, 415 W. Thorain

SOUTHEAST TEXAS CHAPTER
 Corporate Members

Bernhardt, Laurence, P.O. Box 1347, Port Arthur
 Braun, Lester, P.O. Box 1347, Port Arthur
 Dickson, William S., P.O. Box 4284, Beaumont
 French, Richard, 2340 Calder Ave., Rm. 104,
 Beaumont
 Golemon, Harry W., 203 Bowie Bldg., Beaumont
 Goode, D. Rex, 3595 Kenwood Dr., Beaumont
 Harris, Glynn L., 2430 North, Beaumont
 Heartfield, R. C., 419 American Nat'l. Bk., Beaumont
 Ingram, George L., 1125 Freeway North, Beaumont
 Kyburz, Leon C., 2485 Hazel, Beaumont
 Livesay, Tom B., 820 N. 11th St., Beaumont
 Livesay, Wallace B., 820 N. 11th St., Beaumont
 Marak, Kenneth J., 165 Minor St., Beaumont
 Mebane, Mike, 1872 Calder Ave., Beaumont
 Moore, Lee F., 3084-25th St., Port Arthur
 Neff, J. Earl, P.O. Box 1105, Port Arthur
 Pitts, L. W., 1872 Calder Ave., Beaumont
 Ransom, K. R., 2633-5th St., Port Arthur
 Stansbury, Jack, 3084-25th St., Port Arthur
 Steinman, Douglas E., Sr., P.O. Box 3267, Beaumont
 Steinman, Douglas E., Jr., P.O. Box 3267, Beaumont
 Thompson, Charles, Jr., 474 Freeway North, Beaumont
 Vidrine, Lawrence, P.O. Box 1187, Port Arthur
 Wetler, Dorcy L. H., 1872 Calder Ave., Beaumont
 White, Robert P., 1872 Calder Ave., Beaumont
 Associate Members
 Beadle, Frank F., 1872 Calder Ave., Beaumont
 Bell, Milton, 1872 Calder Ave., Beaumont
 Bullock, Charles, P.O. Box 4284, Beaumont
 Harneson, Nuel B., 820 N. 11th St., Beaumont
 Huffhines, Bill S., P.O. Box 3267, Beaumont
 Kelly, William Paul, Jr., 2340 Calder Ave. Rm. 104,
 Beaumont
 Nelson, William F., 2670 North 9th St., Beaumont
 Junior Associate Members
 Akin, F. James, 3595 Kenwood Dr., Beaumont
 Buckley, James W., P.O. Box 4284, Beaumont

HOW HIGH THE TOP?



LOCATION
 701 Shepherd, Houston
 OWNER
 Cheatham, Brady,
 Lafferty & Kendall
 CONTRACTOR
 Darbco
 Construction
 Co.

When steel men "top out" the structural frame of a new building, they're apt to feel pretty good about it. When the top scrapes the sky 15, 30 or 44 stories high, whole cities take note and share the steel man's pride. But to steel men, the top means more than height. It means achievement. More important than "how high the top" is "a job well done." Mosher men fabricated 18 tons of steel for the frame above. And Mosher is proud of its part in this "topping out" and the hundreds of projects it represents, proud of "jobs well done" in steel fabrication no matter "how high the top."

for dependable steel fabrication, always call . . .



MOSHER
STEEL COMPANY

fabricators of steel since 1885

HOME OFFICE & PLANT, 3910 WASHINGTON AVE., HOUSTON, OTHER PLANTS
 AT DALLAS, SAN ANTONIO,* LUBBOCK, TYLER, CORPUS CHRISTI,* SHREVEPORT

*Plants of CAMPBELL STEEL CO., Inc., a Mosher Subsidiary

TEXAS ARCHITECT

- Laminated Timbers
- Timber Decking
- Timber Specialties

TEXAS TIMBERS, INC.

Engineered Timber Construction

P. O. Box 267

Telephone 12

LA GRANGE, TEXAS

WEST TEXAS CHAPTER

Corporate Members

Avery, Henry Clifton, P.O. Box 952, Midland
Black, Joseph Jefferson, 801 W. Kansas, Midland
Cliff, William Henry, 1900 Kermit Highway, Odessa
Covington, Robert L., 403 ABC Bldg., Odessa
Dana, Royal, 207 S. Tyler St., San Angelo
Devlin, Harold James, 300 N. Jackson, Odessa
Fields, Johnnie C., 216 E. 8th, Odessa
Fox, James Lucius, 313 1/2 N. Colorado, Midland
Gary, John W., 305 Benton St., Big Springs
Groos, F. Delmar, 1900 Kermit Highway, Odessa
Goss, Donald R., 19 South Park, San Angelo
Hillhouse, James Douglas, P.O. Box 4704, Midland
Hohertz, Daryle A., 305 Benton St., Big Spring
Leath, Jimmie E., 100 North "N", Midland
Maddux, D. C., 1004 South Oakes St., San Angelo
Mauldin, Lenoard R., P.O. Box 3095, San Angelo
Neuhardt, Charles H., P.O. Box 1741, Midland
Norris, Walter L., 1002 West Wall, Midland
Pace, Homer Eugene, 1002 West Wall, Midland
Peters, Robert Lee, 216 E. 8th, Odessa
Pierce, Joe Bill, 1002 West Wall, Midland
Puckett, Olen L., 600 East 4th, Big Spring
Shelton, James H., 104 Petroleum Bldg., Odessa
Sherrill, Marvin Leroy, 1900 Kermit Highway, Odessa
Welch, Franklin D., P.O. Box 1454, Midland

Associate Members

Hampton, Dorr E., 3652 E. Everglade, Odessa
Tollin, Kenneth Ray, 216 E. 8th, Odessa

Junior Associates

Bell, Wayne, P.O. Box 1741, Midland
Bridges, Jim L., 300 N. Jackson, Odessa

Moore Building Products

406 Bell Ave.

DENTON, TEXAS

Manufacturers and Distributor of:

- LIGHTWEIGHT CONCRETE BLOCK
- SPLIT STONE
- PATIO STONE
- ALUMINUM WINDOWS
- MASONRY SUPPLIES
- OTHER BUILDING SUPPLIES

TELEPHONE 382-2251

B. R. MOORE

GENE GOHLKE



WHY GAMBLE?

SPECIFY AUTOCLAVED "LITECRETE" BLOCKS
FOR ALL YOUR CONCRETE MASONRY NEEDS

Manufactured and Distributed by

DODDS & FOUNTAIN

LEADERS IN EAST TEXAS FOR 12 YEARS

LONGVIEW

Phone PLaza 9-4437

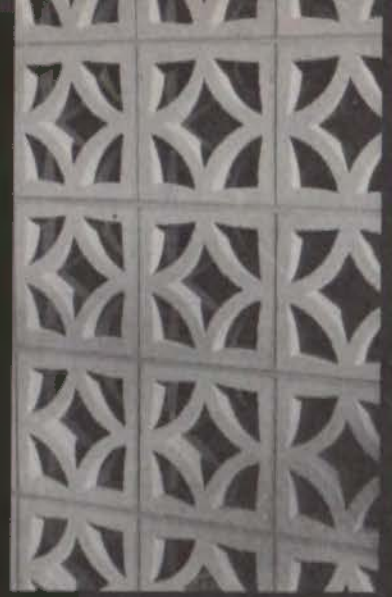
TYLER

Phone LYric 2-0752

CONCRETE MASONRY UNITS BY...

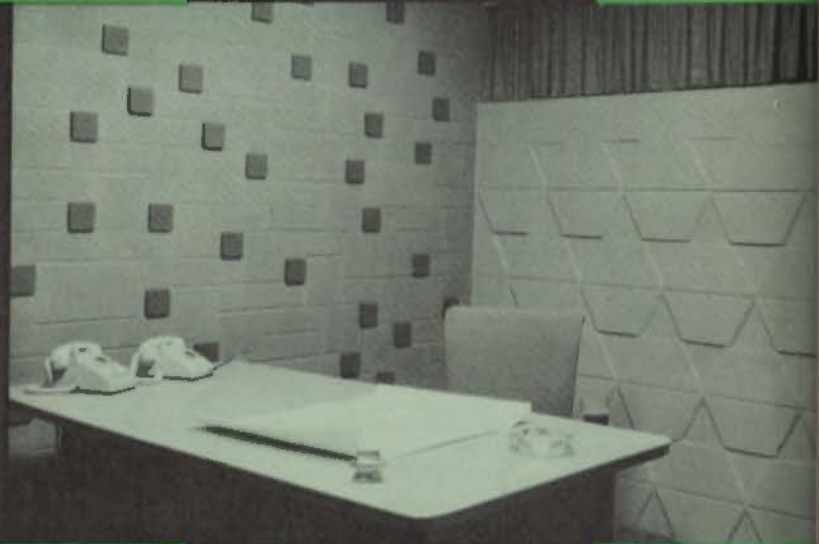
JEWELL

CONCRETE PRODUCTS, INC.



Specify Jewell

FOR
**BLOCKS
AND
BRICKS**



Exclusive

ACME BRICK CO.

Distributor

FOR 13 COUNTY AREA

JEWELL

CONCRETE PRODUCTS, INC.

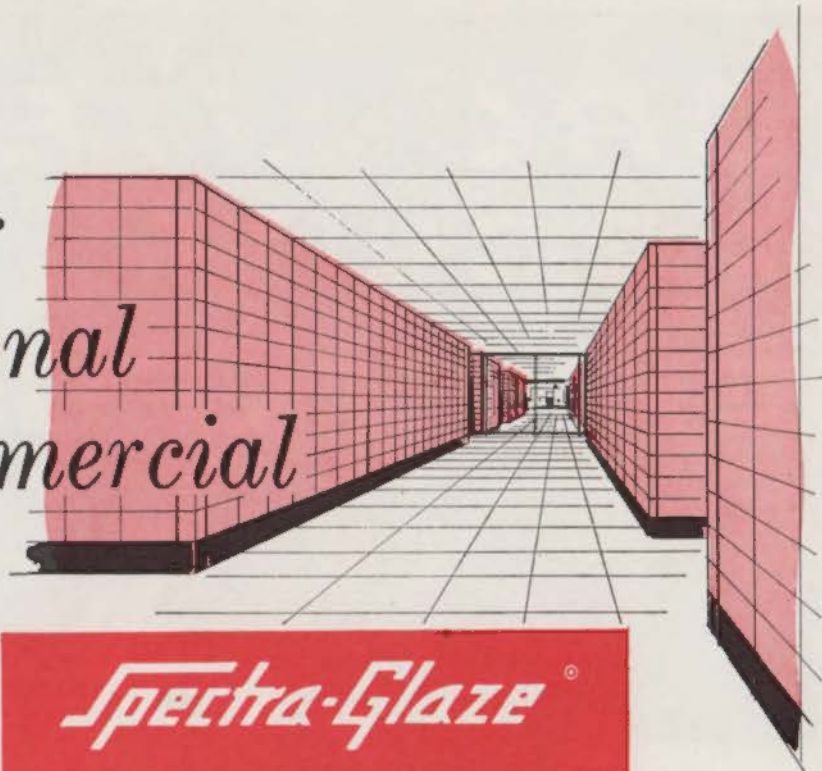
Central Texas Leading Concrete Masonry Producers

P.O. BOX 7115 • WACO, TEXAS

Telephone **PRescott 2-3440**



*For Your
Institutional
and Commercial
Projects
Specify...*



Spectra-Glaze®

The Glazed Masonry
Unit with all the
Prime Requisites

- *Standard Shapes*
- *Uniform Dimensions*
- *36 Beautiful Colors*
- *Fire Rated and Job Proven*
- *Economical in Cost*



Spectra-Glaze®

GLAZED CONCRETE MASONRY UNITS

Manufactured By

FEATHERLITE TILE CO. OF LUBBOCK

P.O. Box 489 — Lubbock, Texas

GLAZED PRODUCTS, INC.

P.O. Box 8346 — Houston, Texas

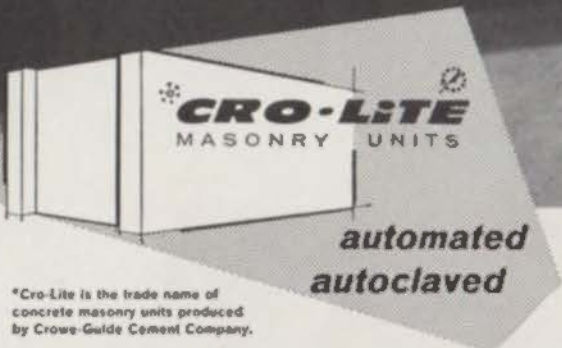
NOLAN BROWNE CO.

P.O. Box 575 — Dallas, Texas

SOUTHWEST GLAZED MASONRY CORP.

P.O. Box 895 — Texarkana, Texas

CRO·LiTE... ACCENT ON EXCELLENCE



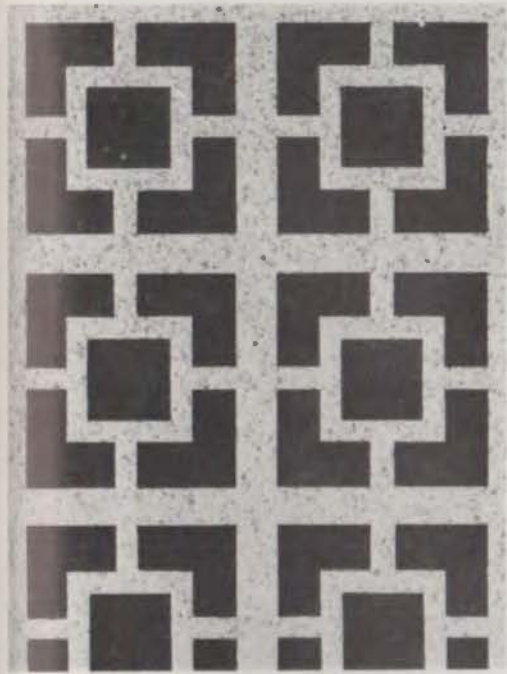
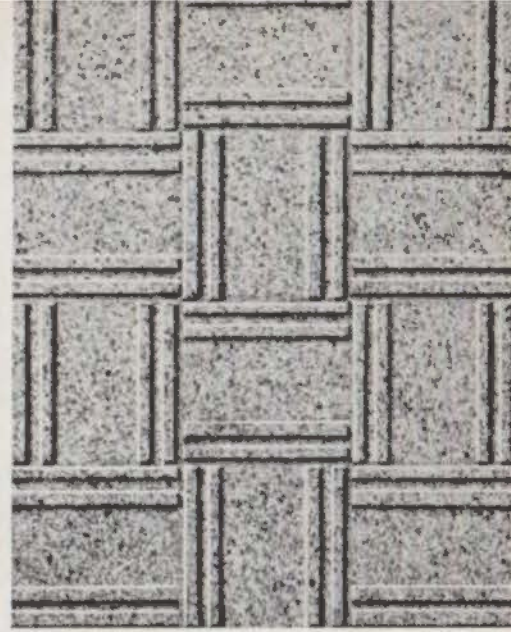
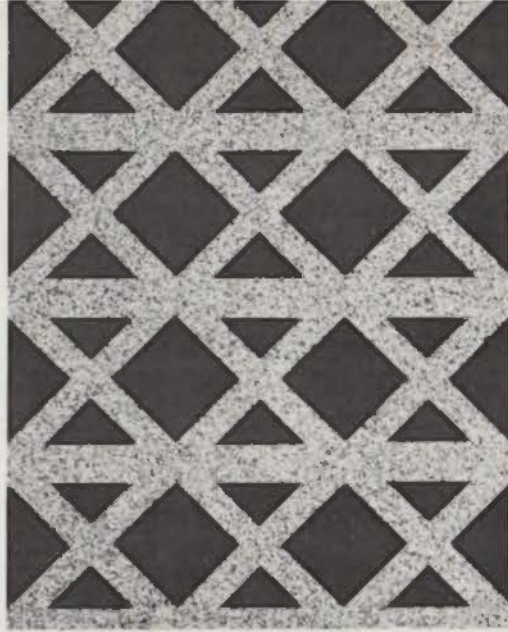
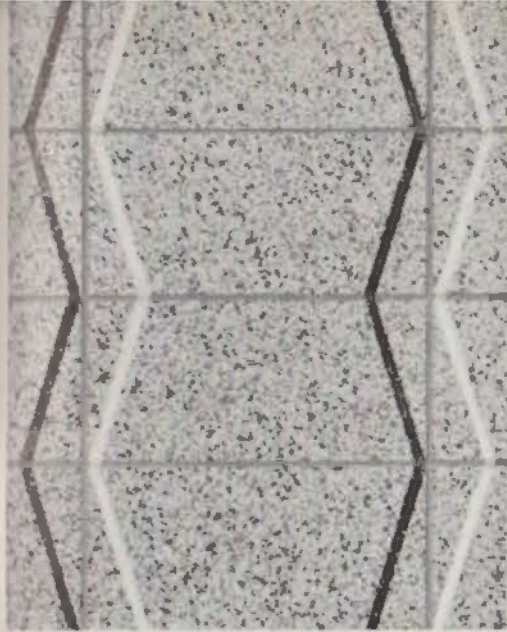
*Cro-Lite is the trade name of concrete masonry units produced by Crowe-Gulde Cement Company.

IN AMARILLO . . .

and throughout this TRI-STATE area, progressive architects have been putting the accent on the beauty of exposed concrete masonry. Since the completion of the Crowe-Gulde automated-autoclaved block plant, architects are assured of even textured, completely cured and stable block. With Cro-Lite the accent is on excellence.

SINCE 1926
Crowe-Gulde CEMENT COMPANY

BOX 9026 • 99 N. TYLER • DR 3/4206 • AMARILLO, TEXAS



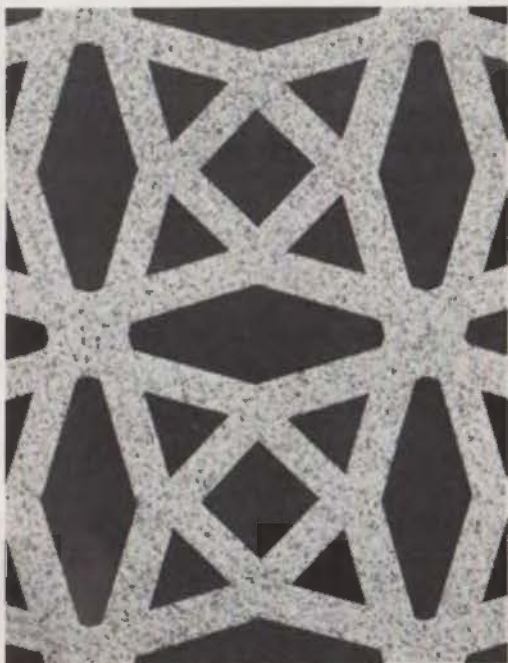
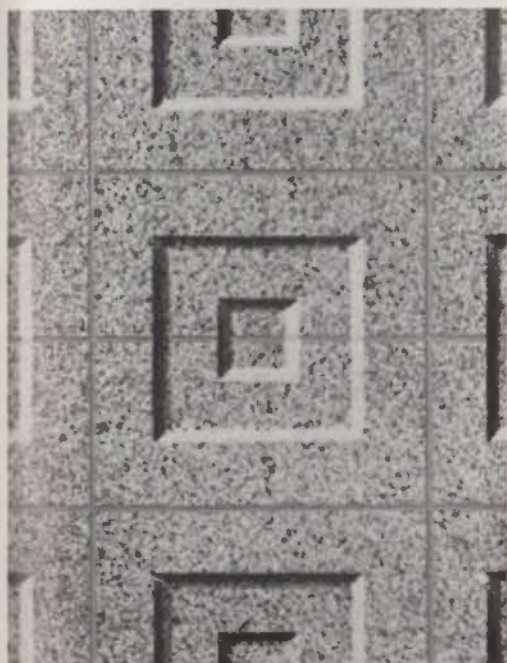
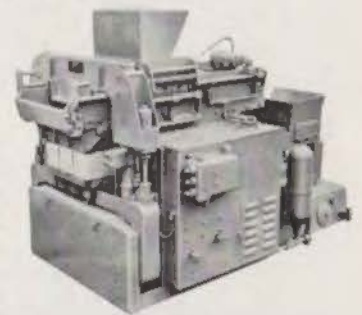
Columbia precision-made block adds beauty to any construction. You can specify modular dimensioned masonry units and select from a wide variety of patterns available. A nearby block plant uses Columbia block making machines. Products from these electronically controlled, hydraulically operated machines assure you of exact dimensions and uniform strength factors.



Write for a Block Manual and the name of a Columbia equipped block plant in your area.

Columbia MACHINE

Home Office: 107 Grand Blvd., Vancouver, Wash.
Branches: Mattoon, Illinois; Burbank, California;
Orlando, Florida; Toronto, Canada



COLUMBIA PRECISION-MADE BLOCKS ARE ALWAYS EXACT IN SIZE, UNIFORM IN QUALITY, STRENGTH AND SHAPE

TEXAS ARCHITECT
P. O. Box 152
AUSTIN, TEXAS
RETURN REQUESTED



FEATHERLITE IN TEXAS

BUILD IT RIGHT - WITH FEATHERLITE

Concrete Blocks - Lightweight Aggregate - Spectra Glaze - Autoclaves - Rotary Kilns

CONCRETE BLOCKS: Lubbock - Midland - Abilene - Irving - Converse

EXPANDED SHALE AGGREGATES: Ranger - Converse

SPECTRA GLAZE: Lubbock

AUTOCLAVES & ROTARY KILNS: Longview

MAIN OFFICES: Austin (915½ Congress Ave., GR 6-8974)



DR. CLAREN G. BULLOCK
610 SOUTH BROADWAY
DALLAS, TEXAS

BULK RATE
U. S. POSTAGE
PAID
AUSTIN, TEXAS
PERMIT NO. 1301