

1
9
5
5

ANNUAL ISSUE

NOVEMBER

TEXAS ARCHITECT

OFFICIAL PUBLICATION OF THE TEXAS SOCIETY OF ARCHITECTS

IN THIS ISSUE

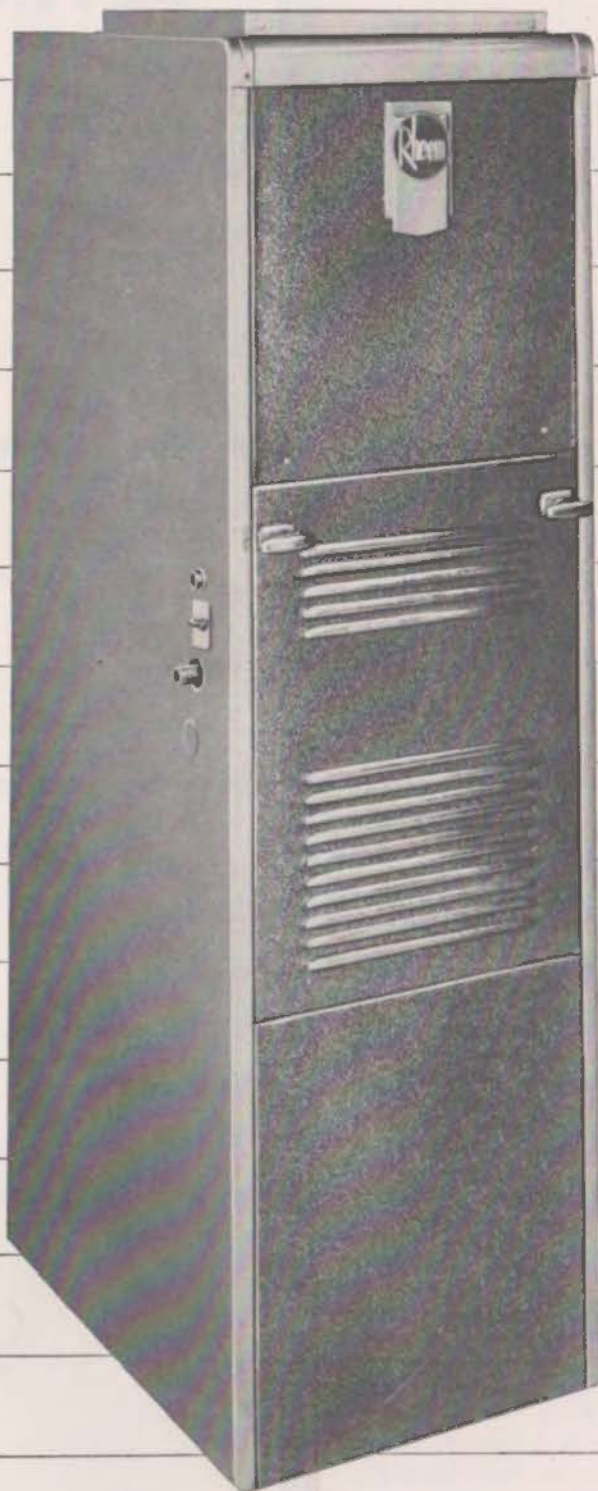
◆ 16th Annual Convention
TSA-AIA

◆ Convention Program

◆ Complete Roster, TSA



M. D. Anderson Hospital & Tumor Institute, in the Texas Medical Center in Houston, has been chosen by the Houston Chapter, AIA as representative of recent work in the Chapter area. Architects: MacKie & Kamrath, TSA-AIA, Houston.



For the very finest
in fire tested furnaces
there's no beating

Rheem

there's a Rheem Furnace*

for every purpose:

attic

wall

closet

floor

console

you can rely on

Rheem Furnaces

because you can

rely

on



RHEEM MANUFACTURING CO. 1025 Lockwood Drive, Houston

*and an add on Air Conditioner



**"...and look at those
windows!"**

Solar . . . the latest in *windeye service to man.

Fixed glass panes slant flow of air upward through
concealed air vents, eliminating visible screens, entry of
dust, rain, insects and human intruders . . . even when open.

Construction and design adaptable to any building creation.

That is Solar.



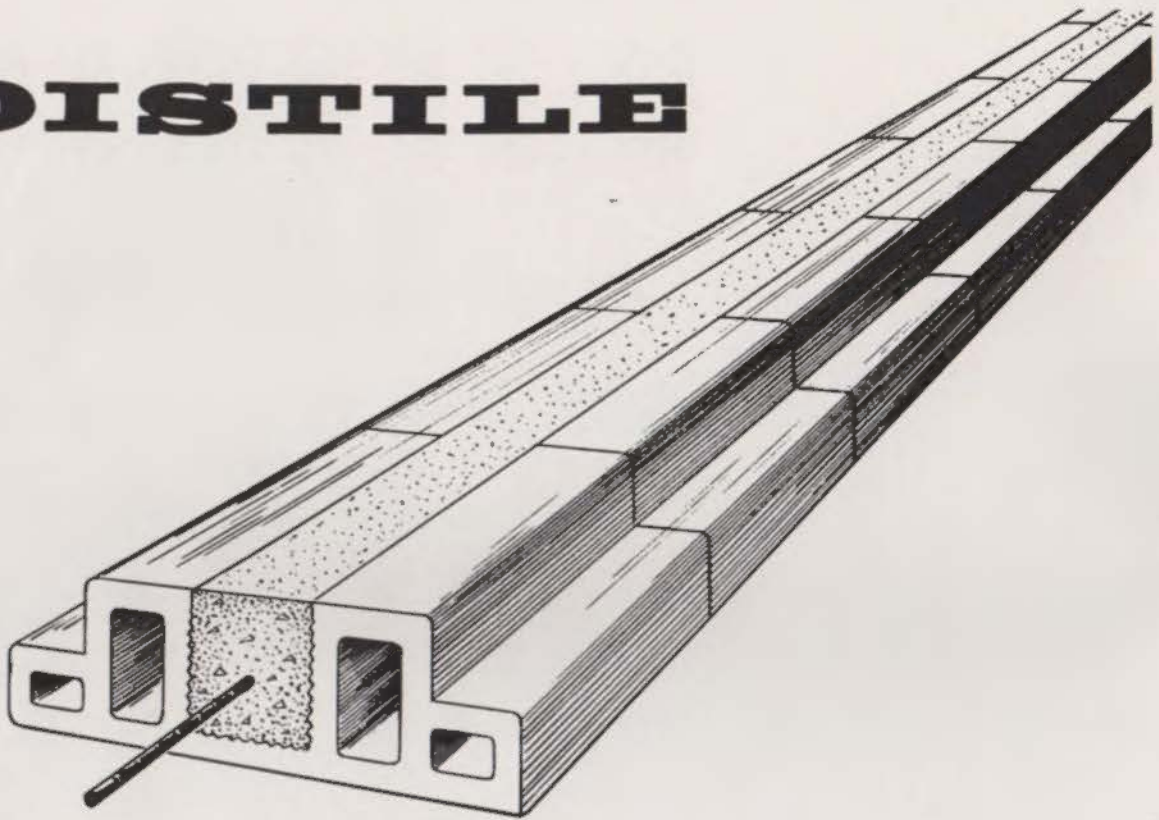
solar
ALUMINUM WINDOWS

MANUFACTURED EXCLUSIVELY BY
UNITED MACHINE CO., FORT WORTH
FOR

SOLAR INCORPORATED
P. O. BOX 8116
FORT WORTH 12, TEXAS

*WINDEYE . . . original definition of a window.

JOISTILE



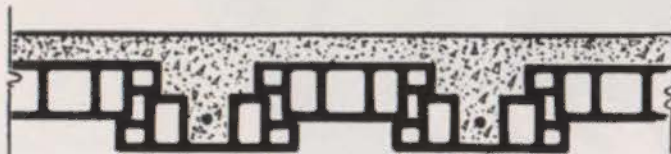
On-the-job fabrication of JOISTILE structural floor and roof systems means greater flexibility to meet a wide variety of on-the-job conditions, as well as versatility to meet many combinations of span and load requirements at lower cost than with competitive systems.

With JOISTILE, the Structural Clay Products Industry offers architects and engineers a better floor system at lower cost, requiring no additional fireproofing.

Write today for your complimentary copy of the JOISTILE design manual.



FLUSH CONSTRUCTION



HEAVY CONSTRUCTION

CLAY PRODUCTS

association *of the Southwest*

109 PERRY-BROOKS BLDG. AUSTIN, TEXAS

An Industry-Sponsored Consulting Service for Architects and Engineers
AUSTIN • FORT WORTH • DALLAS • HOUSTON • OKLAHOMA CITY • TULSA

THE TEXAS ARCHITECT

VOLUME 6

NOVEMBER, 1955

NUMBER 7

INSIDE THE TEXAS ARCHITECT

TSA Convention Largest Regional Meeting	5
Estimated 2,000,000 See "TA-55"	10
Picture Layouts Of TA-55 Winners	11
Convention Program	22
Officers, TSA & Convention Officials	25
Annual Membership Roster, TSA	35

Official Publication of
THE TEXAS SOCIETY OF ARCHITECTS
The Texas Regional Organization of The
American Institute of Architects
David C. Baer, AIA-TSA Editor
1200 Bissonnet, Houston
John G. Flowers, Jr. Managing Editor
Perry-Brooks Building, Austin
Clark, Kirksey & Company
Editorial Counselors
1731 Bissonnet, Houston

PUBLICATION BOARD

David C. Baer, Chairman, TSA-AIA Houston
Lee R. Buttrill, TSA-AIA Beaumont
Harold E. Calhoun, TSA-AIA Houston
Grayson Gill, TSA-AIA Dallas
Albert S. Golemon, TSA-AIA Houston
David D. Red, TSA-AIA Houston
Edward L. Wilson, TSA-AIA Fort Worth

TEXAS SOCIETY OF ARCHITECTS OFFICERS

Grayson Gill President
1913 San Jacinto, Dallas
R. Maz Brooks Vice-President
205 E. 8th Street, Austin
Fred J. MacKie Second Vice-President
2713 Ferndale, Houston
Louis F. Southerland Secretary-Treasurer
602 West Avenue, Austin
John G. Flowers, Jr. Executive Director
327 Perry-Brooks Building, Austin

DIRECTORS

O. L. Puckett Big Spring
Panhandle Chapter, A.I.A.
Winfred O. Gustafson Austin
Central Texas Chapter, A.I.A.
Terrell R. Harper Dallas
Dallas Chapter, A.I.A.
Robert P. Woltz, Jr. Fort Worth
Fort Worth Chapter, A.I.A.
Charles Huie, Jr. San Antonio
San Antonio Chapter, A.I.A.
Otis F. Johnson Corpus Christi
Coastal Bend Chapter, A.I.A.
Harold E. Calhoun Houston
Houston Chapter, A.I.A.
Warren C. Suter Mission
Lower Rio Grande Chapter, A.I.A.
William G. Wuehrmann El Paso
El Paso Chapter, A.I.A.
Ernest Langford Bryan
Brazos Chapter, A.I.A.
David S. Castle Abilene
West Texas Chapter, A.I.A.
R. C. Heartfield Beaumont
Southeast Texas Chapter, A.I.A.
Albert S. Golemon Houston
A.I.A. Director

Published monthly by the Texas Society of
Architects in Houston. Subscription price, 50c
per year, in advance. Copyrighted 1951 by the
T.S.A., and title registration applied for with the
U. S. Patent Office.

Editorial contributions, correspondence, and ad-
vertising invited by the Editor. Due to the nature
of the publication, editorial contributions cannot
be purchased. Publisher gives permission for re-
production of all or part of editorial material

herein, and requests publication credit be given
THE TEXAS ARCHITECT, and author of material
when indicated. Publications which normally pay
for editorial material are requested to give con-
sideration to the author of reproduced by-lined
feature material.

Appearance of names and pictures of products
and services in either editorial copy or advertis-
ing does not constitute an endorsement of same
by either the Texas Society of Architects or the
American Institute of Architects.

HOUSTON CONVENTION A MILESTONE

The sixteenth annual convention of the Texas Society of Architects, opening November 2 at the Shamrock Hilton Hotel in Houston, marks a significant milestone in TSA history.

This will be the largest regional meeting in the history of the American Institute of Architects. It will find overall TSA membership nearing 1,000, in contrast to the 87 charter members who met at the Driskill Hotel in Austin 16 years ago to form the Texas Society of Architects.

Even more important, the Houston convention finds architecture increasingly recognized in Texas and the Southwest as a vital part of our expanding economy and awareness of cultural values. The November 2-4 meeting reflects these strong trends, for it is at once designed to emphasize the practical aspects of architecture, and the extent to which the architect is now part of a constellation including such diverse yet closely-related fields as furniture design, landscape architecture, city planning, painting, sculpture, interior decoration, public relations and education.

The Houston convention is indeed a milestone in TSA history, and we believe it will prove a landmark from which the architects of Texas can go on to increasing achievement and service to the public.

The President's Letter

By

Grayson Gill

TSA-AIA

President,
Texas Society
of Architects



Last month I attended the conference on Metal Curtain Walls in Washington, D. C., where papers were presented by the leaders in this new development in the building art. The conference was attended by some 500 engineers, architects, producers and fabricators interested in the development of better techniques as well as representatives of the masonry interests.

Metal curtain walls are still in the development stage, comparable to the status of reinforced concrete flat slabs in the first decade of this century and air conditioning in the second. The initiative in the development of this new art has been with the producers of the curtain wall materials, and with a limited number of skilled, resourceful and daring architects, fabricators, and engineers.

The conference papers reported exciting developments which will be appearing in new buildings, and which will provide color and texture of almost unlimited variety in stainless steel, aluminum or both of these in combination with porcelain enamel. A survey indicated very high acceptance among a large percentage of clients for whom metal curtain wall buildings have been built. This public acceptance makes a significant contribution to the incentives which will accelerate the further development of metal curtain wall techniques.

During the last decade much effective research has also been done in masonry products and application techniques. This has resulted in the development of equally revolutionary improvements in masonry construction, such as light weight insulating concrete masonry units, reinforced tile and brick, cavity walls, thin granite, stone and marble veneer, etc.

The progressive architect is contributing to these research programs in their application to his current design problems, and our clients are getting better buildings as a result of this cooperation by all elements of the construction industry.

Chrysler Airtemp

AIR CONDITIONING

**pioneered by Chrysler
engineered by Chrysler
to offer you the most
versatile line of air
conditioning & heating
equipment available today
for residential & commercial
building**

Air Accessories, Inc.

1400 Henderson
Fort Worth, Texas

Airtex, Inc.

1007 Waugh Drive
Houston, Texas

Baker Engineering Co.

P. O. Box 543
Lubbock, Texas

Caperton Refrigeration Co.

P. O. Box 3222
Tyler, Texas

Low-Temp Distributors

125 Lamar Street
San Antonio, Texas

Red River Distributors


500 Galveston
Wichita Falls, Texas
Highway 75 East
Sherman, Texas

Royalair Distributors

2122 Olive Street
Dallas, Texas

Texas, Inc.

5607 E. University
Dallas, Texas



**for complete
information**

**CALL THE
AIRTEMP
DISTRIBUTOR
IN YOUR AREA**

TSA Convention at Shamrock Hilton To Be Largest Regional Meeting

"Approach To Good Design" Is Theme
Of November 2-4 Sessions in Houston;
Nathaniel Owings To Be Keynote Speaker



Nathaniel Owings, FAIA
Keynote Speaker



Dorothy Draper
Seminar Participant



Ulysses Floyd Rible, AIA
Seminar Participant

More than 500 TSA members are expected to register at the Shamrock Hilton Hotel in Houston beginning November 2 for the sixteenth annual TSA convention, the largest regional meeting in the history of the American Institute of Architects.

The theme of the Houston convention, "Approach To Good Design" has attracted an outstanding group of speakers and seminar participants from among the nation's leading architects and representatives of allied fields, including city planning, furniture and industrial design, landscape architecture, painting and sculpture, city planning, public relations and interior decoration.

Owings Is Keynote Speaker

The keynote speaker will be Nathaniel Owings of the New York and San Francisco firm of Skidmore, Owings & Merrill, architects for the Air Force Academy at Colorado Springs. Mr. Owings was spokesman for his firm during the controversy over preliminary work for the Air Force Academy which was discussed this summer at special meetings of House and Senate subcommittees. Subsequently, the Senate voted to restore the entire appropriation for the Academy, funds

for current construction were provided and the designs for five buildings at the Colorado Springs installation were formally approved.

Other convention speakers include Garrett Eckbo of San Francisco, landscape architect; Seymour Fogel, painter, muralist and sculptor from Austin; Ulysses Floyd Rible, young Los Angeles architect who has won increasing note for his ability in design; Dorothy Draper, New York authority on interior decoration; George Nelson, New York architect who is nationally known as a furniture designer; Professor Jean Labatut, head of the Graduate School of Architecture at Princeton University; Harold F. Wise, Los Angeles city planner, who is currently engaged in preparing a master plan for the City of Austin; and Walter M. Megranigle of Pittsburgh, Pa., public relations consultant to the AIA.

Rolfe To Be Moderator

Walter T. Rolfe, FAIA, of Houston, is to be moderator of the seminar sessions. Grayson Gill, TSA president, will preside at a number of convention sessions.

Another attraction during the convention will be the attendance of the national AIA committee on school

buildings, which is to hold regular sessions at the Shamrock Hilton.

Many TSA delegates will arrive early on Tuesday, November 1 to participate in the convention golf tournament sponsored by Texas Quarries, Inc. The tourney, at the Pine Forest Country Club, will be preceded by an 8:00 a.m. breakfast. Following the tournament, the Houston Chapter, AIA will be host at a pre-convention cocktail party at 7:00 p.m. in the Emerald Room of the Shamrock Hilton.

Formal Opening At 10 a.m.

The convention gets down to business the following morning, with an 8:00 a.m. breakfast for the TSA Executive Board at the Shamrock Hilton. Registration begins at 9:00 a.m., with the formal opening of the convention, President Gill presiding, set for 10:00 a.m. After an invocation, greetings from city officials and the President's Annual Report, Mr. Owings will deliver the keynote address. There is to be a short business session before the morning session ends at 11:30 a.m.

On November 2 and 3 the luncheon period will be devoted to individual committee luncheons.

The first afternoon seminar opens November 2 at 2:00 p.m., with Mr.

Rible and Mr. Owings as participants and Mr. Rolfe as moderator. From 4:00 until 4:30 p.m., after the opening seminar which will conclude with a question-and-answer period, delegates are invited to visit the exhibitor's booths.

On the evening of November 2 there will be an informal party and buffet at the Shamrock Hilton pool.

Continues With Seminar

The convention continues at 9:30 a.m. Thursday, November 3, with a 9:30 a.m. seminar. Participants are to be Mr. Nelson, Mr. Fogel and Dorothy Draper. Following another group of individual committee luncheons, an afternoon seminar with Mr. Wise and Mr. Eckbo is scheduled. Another period for visiting convention booths, from 4:00-4:30 p.m., follows the seminar.

One of the featured social events at the convention is scheduled for the evening of November 3. This is a costume ball, from 9:00 p.m. until midnight, in the Emerald Room of the Shamrock Hilton. Sponsors are TSA and the Elgin-Butler Brick Company.

Friday, November 4, the final day of the convention, opens with a traditional breakfast given by the Acme Brick Company. A final seminar is scheduled at 10:00 a.m. with Professor Labotut, Mr. Megrnigle and Mr. Rolfe, who will at this time give an overall summary of seminar discussions during the convention.

Awards Luncheon On Friday

At an awards luncheon on Friday, certificates for winners in the recent competition "Texas Architecture—1955" are to be given. On Friday afternoon, two principal events are scheduled. These are a meeting of the national school buildings committee of the AIA at 2:30 p.m. and the final business meeting at 3:30 p.m. Free time to visit exhibit booths is scheduled from 4:15-4:45 p.m.

The convention concludes with a 7:00 p.m. cocktail party sponsored by the Producer's Council, at the Shamrock Hilton, and the traditional President's Banquet and Ball in the Emerald Room of the Shamrock Hilton, from 8:00 p.m. until midnight.

Many convention delegates are planning to stay over the next day, Saturday, November 5, for the Southwest Conference football game between Rice Institute and the University of Arkansas, defending conference champions.

NATHANIEL OWINGS—

Partner in Skidmore, Owings & Merrill, architectural firm with offices in New York, Chicago, San Francisco and Portland, Ore. Graduate Cornell University. FAIA. Active in many civic groups including Boy Scouts (former commissioner), Chicago Plan Commission (past chairman). Now resides in San Francisco.

DOROTHY DRAPER—

President of Dorothy Draper, Inc., New York City decorating, color and style consultants. Formerly an editor of *Good Housekeeping*. Author and columnist.

GARRETT ECKBO—

Landscape architect practicing in partnership with Edward Williams and Robert Royston with offices in San Francisco and Los Angeles. Graduate, University of California and Harvard University in landscape design and landscape architecture. Author and consultant. Member faculty, University of California, 1946-1954.

SEYMOUR FOGEL—

Artist, muralist and sculptor of Austin, Texas. Trained at National Academy of Design and Art Students' League of New York. Has exhibited many principal museums including National Gallery, Modern Museum of Art. Awards include \$1000 purchase prize State Fair of Texas, 1955. Member faculty, University of Texas, 1946-1954. Murals executed in Waco, Houston, Austin and other cities outside Texas.

JEAN LABATUT—

Professor in charge of advanced study in architecture, Princeton University. Architect, landscape architect, urban planner, consultant and teacher in seven countries. Laureat de l'Institut de France. AIA. Formerly director of the American School, Fontainebleau, France.

WALTER M. MEGRONIGLE—

Manager, public relations division, Ketchum, Inc., public relations consultant to AIA. Formerly with General Motors Corporation. Guest lecturer many colleges and universities. Consultant and author.

GEORGE NELSON—

Furniture and industrial designer of New York City. AIA.

WALTER T. ROLFE—

Member of Houston and Beaumont architectural firm of Golemon & Rolfe. Formerly professor of architecture, University of Texas. FAIA.



Walter T. Rolfe, FAIA
Seminar Moderator



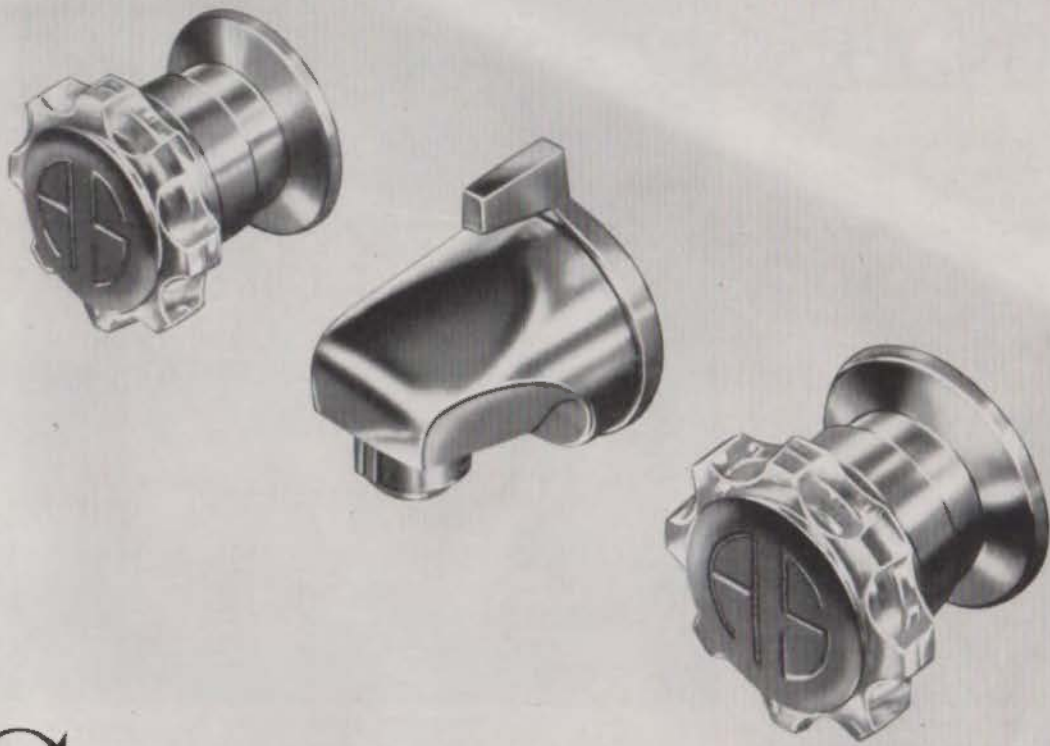
Walter M. Megrnigle
Seminar Participant



Garrett Eckbo
Seminar Participant



Seymour Fogel
Seminar Participant



Created by **AMERICAN-Standard**



New jewel-like fittings add sparkle to bathroom fixtures

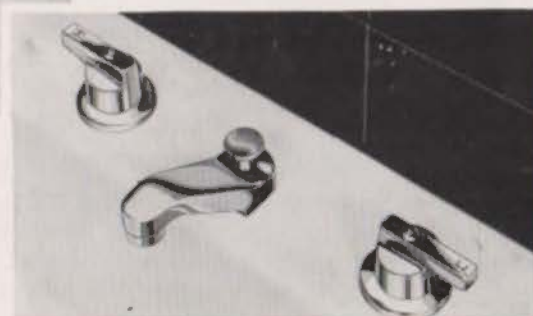
Bathroom fittings are an essential part of every home...and an exciting part of our business. For fittings provide the all-important "finishing touch" of utility and extra beauty...and this is particularly true of the two lines of new-design fittings just introduced by American-Standard.

The new, jewel-like Monogram fittings in satin chrome have easy-grip, translucent handles—crystal clear, or in five colors to harmonize with the bathroom decorative scheme. In addition, they can be engraved with your own initials to personalize the bathroom.



Monogram fittings, with clear or colored handles, personalize your bathroom.

Quality fittings—of non-tarnishing Chromard—add new grace and sparkle.



The new, Quality fittings have a grace of line and a sparkling gleam that will give new life to any bathroom, anywhere. Both new lines have the Nu-Re-Nu valve assembly for long-life service.

Bathrooms—and kitchens, too—must be functional, but American-Standard believes they can be rooms of beauty, too. That's why the new American-Standard kitchen and bathroom fittings are not only redesigned for better, longer service, but for special eye-appeal as well.

These new products typify the extra quality and beauty to be found in American-Standard products. They also illustrate the constant development of new and better products which makes American-Standard the name to remember for modern comfort and convenience.

Plumbing and Heating Division of American Radiator & Standard Sanitary Corporation, Pittsburgh, Pennsylvania.



AMERICAN-Standard

HENDERSON CLAY PRODUCTS

HENDERSON, TEXAS

*Manufacturers of Quality Face, Roman and Norman Brick
White, Buff, Pink, Grey and Brown*

FOR BEAUTIFUL ARCHITECTURAL DESIGN AND EXAMPLES OF OUR ATTRACTIVE AND EXCELLENT QUALITY CLAY PRODUCTS SEE THE FOLLOWING:

First National Bank
Longview, Texas
Alfred C. Finn, Architect

Lubbock Senior High School
Lubbock, Texas
Atcheson and Atkinson, Architects

Melrose Office Building
Houston, Texas
Lloyd and Morgan, Architects

Hotel Statler
Dallas, Texas
William Tabler, Architect

Tidwell Bible Building
Baylor University, Waco, Texas
Easterwood and Easterwood, Architects

Hotel Fredonia
Nacogdoches, Texas
James N. McCammon, Architect

Rockdale Senior High School
Rockdale, Texas
George Dahl and Associates, Architects

Bellaire Senior High School
Bellaire, Texas
Golemon and Roife, Architects

Birdwell Building, Stephen F. Austin
State College, Nacogdoches, Texas
Shirley Simons and Sons, Architects

Cleveland High School
Cleveland, Texas
O. L. Hazelwood, Architect

Incarnate Word High School
San Antonio, Texas
Julian and White, Architects

Howard County Courthouse
Big Spring, Texas
Puckett and French, Architects

Lufkin Senior High School
Lufkin, Texas
Wilbur Kent, Architect

Killeen High School
Killeen, Texas
George Christensen, Architect

Arlington Senior High School
Arlington, Texas
Preston M. Geren, Architect

First Presbyterian Church
Arlington, Texas
Broad and Nelson, Architects

Kaufman County Courthouse
Kaufman, Texas
Wyatt C. Hedrick, Architect

Texas Company Laboratory
Port Arthur, Texas
Stone and Pitts, Architects

Annie Webb Blanton School
Dallas, Texas
Terrell R. Harper, Architect

Hillcrest Elementary School
Waco, Texas
Walter Cocke, Jr., Architect

Burgess Senior High School
El Paso, Texas
Davis and Foster, Architects

Church of the Assumption
West, Texas
Harkrider and Jones, Architects

First Christian Church
El Paso, Texas
Carroll and Daeuble, Architects

Sears Roebuck Store
San Antonio, Texas
Bartlett Cocke, Architect

WE HAVE JUST COMPLETED AN EXTENSIVE MODERNIZATION AND ENLARGEMENT PROGRAM AT OUR PLANT AND WE CAN OFFER GOOD DELIVERIES ON OUR PRODUCTS.

Representatives in All Principal Cities. Samples and Prices Sent On Request.



Poolside At The Shamrock-Hilton

The beautiful pool at the Shamrock-Hilton, scene of a Wednesday night TSA Convention party.

NATIONAL OFFICE PRACTICE COMMITTEE MEETS

The national office practice committee of the AIA, of which David C. Baer of the Houston Chapter is chairman, met October 22-24 at the Shamrock Hilton Hotel in Houston.

The office practice group, a key AIA committee which has been particularly active, considered the following at the Houston sessions: survey of business administration and office procedures within the architectural profession; approval of a new standard architect-engineer agreement form; the table of contents for a proposed Handbook of Architectural Practice, tentatively proposed for publication in 1957; and a survey to be made on architect-client relationships, including a new architect-client agreement.

Attending the committee meeting were a representative from each AIA region; William Stanley Parker of Boston, Mass., consultant to the AIA; and

Walter Taylor of Washington, D.C., director of the Department of Education and Research of the AIA. Mr. Baer presided at the committee sessions.

SCHOLARSHIP IN CERAMIC ENGINEERING ESTABLISHED

A four-year scholarship in ceramic engineering has been established at the University of Texas by the Texas Vitrified Pipe Co. of Mineral Wells, manufacturers of vitrified clay pipe and other clay products.

The scholarship provides for an annual grant of \$600 to help defray expenses for tuition, books, registration and university fees and living. It will be awarded to a male student, beginning with the fall semester of 1956. In the event that the ceramic engineering course is extended to five years, the scholarship will cover that period.

Eligibility Requirements Listed

Any qualified graduating high school senior from Parker and Polo Pinto Counties will be eligible to apply. To qualify, an applicant must rank in the upper one-fourth of boys in his graduating class at the time the application is submitted. He must also be able to submit a certificate at the end of his senior year showing 16 units of

Three Recent Projects Subject of Program For Dallas Chapter

Three recent projects in the Dallas area, the Statler Hilton Hotel, Dallas Civic Auditorium and Love Field Terminal, were the subject of a recent program for the Dallas Chapter, AIA. The hotel, designed by William Tabler, AIA of New York, uses cantilever construction with a metal and glass facade and unusual curved mural of stained glass in the night club.

The auditorium, by George L. Dahl, TSA-AIA of Dallas, is a circular building, 300 feet in diameter, built of reinforced concrete with no supporting columns. All levels in the 10,000-seat structure are reached by romps.

The terminal building, designed by Braad & Nelson with Jack Corgan, all TSA-AIA of Dallas, has undulated levels and moving sidewalks to runways. Ten acres are under roofed area which includes the "fingers" or moving sidewalks and a glass-enclosed observation deck.

R. L. Thornton, mayor of Dallas, was presented an honorary membership by the Dallas Chapter as a feature of the meeting.

high school credits, including two units of algebra, one unit of plane geometry, one unit of physics and three units of English. Special preference will be shown to students who have also completed one-half unit each of solid geometry and trigonometry and one unit each of chemistry and mechanical drawing.

Applicants shall also be required to submit a non-technical paper of at least 500 words stating their reasons for wishing to study ceramic engineering. In addition, they must agree to take a vocational preference test offered by the University of Texas to determine their aptitude for engineering. This test will be administered by the applicant's high school principal.

Applications should be submitted to the high school principal where the applicant was registered before January 1, 1956. A secret committee appointed by the superintendent of the school will review each application and make recommendations.

Firm of Milburn & Nuhn Established at Austin

William Wallace Milburn, Jr., and Kenneth M. Nuhn have formed a firm for the practice of architecture at Austin. The firm name is Milburn & Nuhn, Associated Architects, at 708 South Lamar in Austin.

ESTIMATED 2,000,000 SEE "TA-55"

"Texas Architecture - 1955", the statewide competition sponsored by TSA in cooperation with the Dallas Chapter, AIA, was seen by an estimated 2,000,000 persons beginning October 3 at the Women's Building during the annual State Fair of Texas.

As many as 200,000 persons per day toured the exhibit, which was presented in a most attractive setting by the "TA-55" committee of TSA and the Dallas Chapter under the chairmanship of LaVere Brooks, TSA-AIA of Dallas.

The entire show can be seen at the Houston convention, and it will be presented later in various Texas cities. The public is cordially invited to see this exhibit.

Judges for the annual competition were Harris Armstrong of Saint Louis and Charles Colbert of New Orleans. The winning designs, which are shown in the current issue of the TEXAS ARCHITECT, were as follows: All winning architects and firms are members, TSA-AIA.



"Texas Architecture — 1955" at State Fair

Entrance of the "Texas Architecture — 1955" exhibition at the Women's Building, State Fair of Texas. The exhibition, under the general chairmanship of LaVere Brooks, TSA-AIA of Dallas, was seen by an estimated 2,000,000 persons at the State Fair.

FIRST HONOR AWARD FOR NON-RESIDENCE:

A & M Consolidated High School,
College Station, Texas, Caudill, Row-
lett, Scott and Associates, Architects,
Bryan.

St. Stephen's Chapel, Austin, Texas,
Fehr and Granger, Architects, Austin.

HONOR AWARD FOR NON-RESIDENCE:

Engineering Office and Classrooms
Building, University of Houston,
Houston, Texas, Cato, Austin and
Evans, Architects, Houston.

The Stewart Company Building, Dal-
las, Texas, Horwood K. Smith, Archi-
tect, Dallas.

A Presbyterian Church in San An-
tonio, Texas, Milton A. Ryan, Archi-
tect, San Antonio.

St. Mary's Student Center, College
Station, Texas, William E. Nash,
Architect, Bryan.

AWARD OF EXCELLENCE FOR RESIDENCE:

Richard M. Hardison Residence,
Houston, Bolton and Barnstone,
Architects, Houston.

John G. York Residence, Harlingen,
Texas, John G. York, Architect, Har-
lingen.

John A. Watson Residence, Houston,
Texas, Harwood Taylor, Architect,
Houston.

TEXAS ARCHITECTURE—1955

First Honor Award for Non-Residence:

A & M Consolidated High School, College Station, Texas,
Caudill, Rowlett, Scott and Associates, Architects, Bryan.

St. Stephen's Chapel, Austin, Texas,
Fehr and Granger, Architects, Austin.

Honor Award for Non-Residence:

Engineering Office and Classrooms Building, University
of Houston, Houston, Texas,

The Stewart Company Building, Dallas, Texas,
Horwood K. Smith, Architect, Dallas.

A Presbyterian Church in San Antonio, Texas,
Milton A. Ryan, Architect, San Antonio.

St. Mary's Student Center, College Station, Texas,
William E. Nash, Architect, Bryan.

Award of Excellence for Residence:

Richard M. Hardison Residence, Houston,
Bolton and Barnstone, Architects, Houston.

John G. York Residence, Harlingen, Texas,
John G. York, Architect, Harlingen.

John A. Watson Residence, Houston, Texas,
Harwood Taylor, Architect, Houston.

Winners - "Texas Architecture - 1955"

Two First Honor Awards for Non-Residential:



A&M Consolidated High School
College Station, Texas

Architects:
Caudill, Rowlett, Scott &
Associates, TSA-AIA
Bryan, Texas

St. Stephen's Chapel
Austin, Texas

Architects:
Fehr & Granger, TSA-AIA
Austin, Texas



Three Awards of Excellence for Residence

Richard M. Hardison Residence
Houston, Texas

Architects:
Bolton & Barnstone, TSA-AIA
Houston, Texas



John A. Watson Residence
Houston, Texas

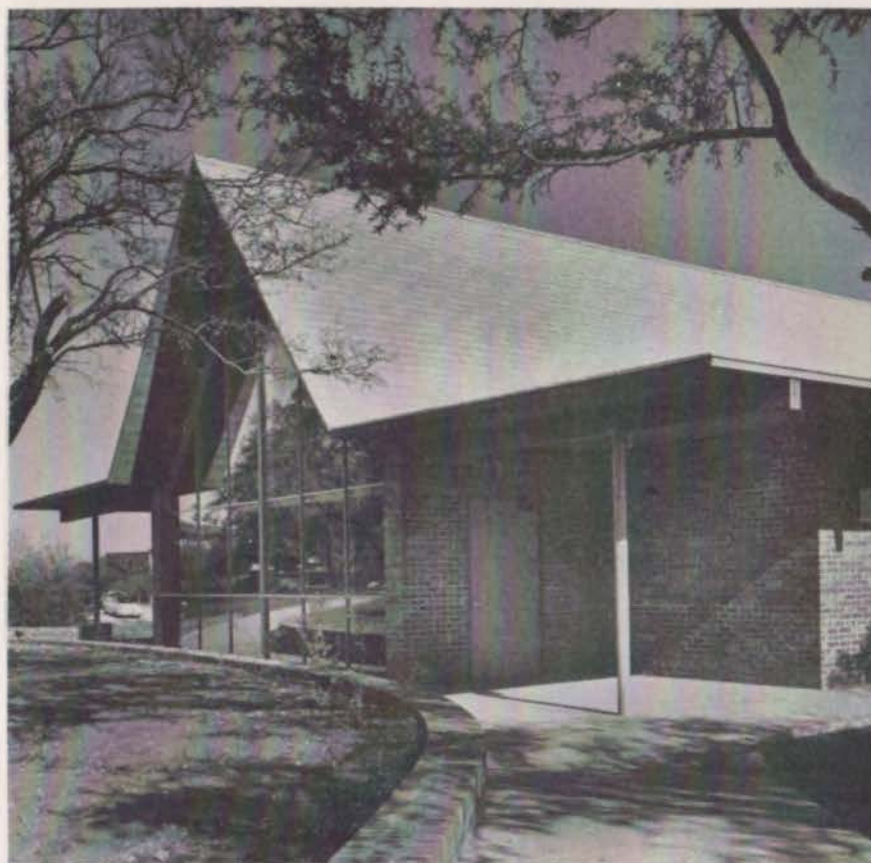
Architect:
Harwood Taylor, TSA-AIA
Houston, Texas

John G. York Residence
Harlingen, Texas

Architect:
John G. York, TSA-AIA
Harlingen, Texas



Four Honor Awards for Non-Residential

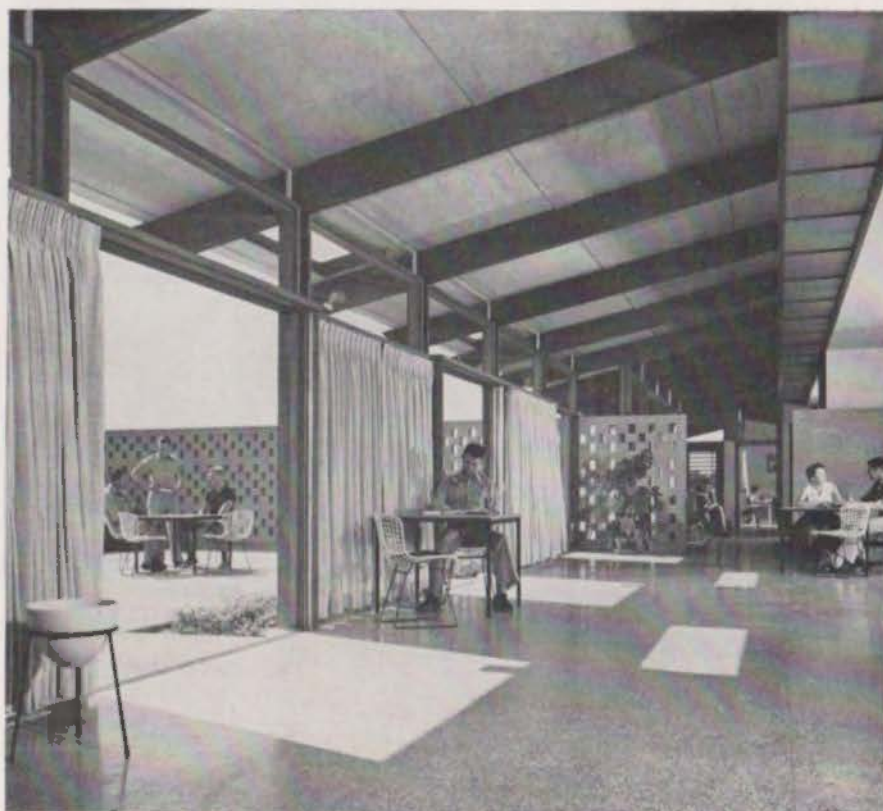


University Presbyterian Church
San Antonio, Texas

Architect:
Milton A. Ryan, TSA-AIA
San Antonio, Texas

St. Mary's Student Center
College Station, Texas

Architect:
William Nash, TSA-AIA
Bryan, Texas



Four Honor Awards for Non-Residential

(Continued)



Engineering Office and Classroom Building
University of Houston
Houston, Texas

Architects:

Cato, Austin & Evans, TSA-AIA
Houston, Texas



Stewart Company Building
Dallas, Texas

Architect:

Harwood K. Smith, TSA-AIA
Dallas, Texas

ARCHITECTS' COMMENT on...

Monarch

Colorblend

LONG tile

8 1/2" x 4 1/4" x 3/8" ceramic wall tile



Houston Architect Herbert Voelcker says:

"We used Monarch L-O-N-G Tile for all wainscoatings in our Peter Janowski School. First cost was competitive with glazed structural block, and installation was much faster. In fact, we completed the building in seven months and broke all time records. Monarch *Colorblend* Tile gave us many beautiful color combinations. Overall results—tops! We're specifying Monarch L-O-N-G Tile for future jobs, too!"

SIZED FOR SPEED

This 8 1/2" x 4 1/4" x 3/8" ceramic wall tile does a BIG job on big areas. Set either conventional or thin-setting bed installation, this real clay tile with Monarch's own colorful *Colorblended* beauty can be the common denominator that solves many an architectural problem.



Monarch

TILE
MANUFACTURING, INC.

San Angelo, Texas

Showrooms and Warehouses in:

Dallas, El Paso, Fort Worth, Houston, and
San Antonio, Texas; Phoenix and
Tucson, Arizona; Oklahoma City, Oklahoma;
Denver, Colorado.



Peter Janowski Elementary School, Houston, Texas
Herbert Voelcker and Associates, Architects
Milton McGinty, Co-ordinating Architect
Martin Semands Construction Co., General Contractor
Martini Tile and Terrazzo Co., Tile Contractor

Visit our booth at the 16th
Annual Convention of TSA

*Feast your eyes on. America's newest,
most modern and practical...*

A-D's CRUSADER

Chair Desk



The features of this chair add up to a point-by-point outline of the perfect chair desk—one unit with all of these features combined:

- Built-in posture control in seat and back
 - Larger-than-average storage space
- Heavier-gauge steel construction for durability and rigidity
 - Room and comfort of the one-post arm support

Write or wire your American Desk distributor for a personal demonstration of this superior classroom unit.



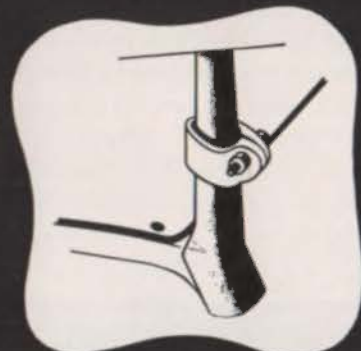
STORAGE

Deeper and wider: more space than in any other unit of this type on the American market.



STEEL

Heavier gauge: the 14-gauge die-formed frame with 22-gauge panels.



POST-ARM LOCK

which we believe is the unqualified best on the American market. After adjusting the height desired in the tablet arm, set the post-arm lock—and it stays there, without twisting, distorting or turning, even under the most rugged use.



NON-TIP

A-D's extended front legs and heavy steel bottom go a long way to eliminate easy tipping.

American Desk

MANUFACTURING COMPANY • TEMPLE, TEXAS

Convention Exhibits

Exhibitor: Lightolier Inc., Jersey City, New Jersey.

Representatives at exhibit: Harold H. Baldauf, Regional Manager; Edwin Anderson, Sales Representative.

Products shown: Lighting equipment for homes, offices, stores, schools and public buildings.

★ ★ ★

Exhibitor: Baldwin-Hill Company, Temple, Texas.

Representatives at exhibit: J. L. Mohun, general manager, Southwest division; George W. Elliott, public relations manager, Southwest division; John M. Bland, district manager, Gulf Coast area; T. S. Chenoweth, district manager, Northern oreo; J. F. Cross, district manager, Western area.

Products shown: Complete line of home, commercial and industrial insulations.

★ ★ ★

Exhibitor: United States Plywood Corporation, Houston, Texas.

Representatives at exhibit: William Hodge, Roy Warren.

Products shown: Plywood of all types, doors, micarta, armorply, chalkboard and movable partitions.

★ ★ ★

Exhibitor: Henderson Clay Products, Henderson, Texas.

Representatives at exhibit: Orville Tadd, Keenan Barrett.

Products shown: White, buff, pink, grey and brown face brick, scored velour and smooth textures; white, buff, pink, grey and brown Roman and Norman velour texture brick.

★ ★ ★

Exhibitor: Monarch Tile Manufacturing, Inc., San Angelo, Texas.

Representatives at exhibit: R. C. Crabb, president; Bill C. Baker, vice president; Joe D. Ward, factory representative; George R. Manson, factory representative.

Products shown: Ceramic wall, trim and floor tiles.

★ ★ ★

Exhibitor: Crone Company, Houston, Texas.

Representatives at exhibit: H. G. Faust, Jr., manager; W. H. Laade, W. L. DeBord, G. W. Summy, Mrs. Verna Godsey.

Products shown: Oval basin in a marble slab with gold plated trim, Criterion lavatory in a tile countertop, and Criterion closet combination with saddle seat.



1954 Featherlite Competition Winners

The \$2500 Featherlite Competition for students in Texas Schools of Architecture will again be a feature of the 1955 TSA Convention. Above, George Bickel, Featherlite official, is shown congratulating 1954 winners of the competition.

Exhibitor: American-Standard Plumbing and Heating Division, Dallas, Texas.

Representatives at exhibit: Mark Marshall, manager; William W. Bishop, heating and cooling representative; Bailey B. Simmons, representative; Arthur Hundley, architects' representative; Paul R. Pettit, meeting representative.

Products shown: Bathroom plumbing fixtures of latest design and central heating and cooling plant.

★ ★ ★

Exhibitor: Holophane Company, Inc., New York, New York.

Representatives at exhibit: C. A. Patterson, district manager, Houston.

Products shown: Lighting fixtures.

★ ★ ★

Exhibitor: Reynolds Metals Company, Houston, Texas.

Representatives at exhibit: John F. Latt, W. E. Kaufman, Dale Frye, A. P. Kilburn, J. Best.

Products shown: Photographs of local projects in Houston using ribbed embossed siding and Reynocoustic; monumental window.

★ ★ ★

Exhibitor: Uvalde Rock Asphalt Company, San Antonio, Texas.

Representatives at exhibit: William K. Clark, sales supervisor; Harold O. Prack, Houston sales representative.

Products shown: Azrack, Vlna-Lux, Duraco, and Azphlex Vinylized Tiles and floor maintenance and accessory products.

★ ★ ★

Exhibitor: Texeramics Inc.

Representatives at exhibit: C. A.

Nicholson.

Products shown: Flint quarry tile, manufactured by the dry-press method.

★ ★ ★

Exhibitor: R. H. Folmar Company.

Representatives at exhibit: Murray C. Jayce, James E. Ferguson, Jr.

Products shown: Aluminum projected windows, casement windows sliding panels and swinging doors.

★ ★ ★

Exhibitor: Black-Brollier, Inc., Houston, Texas.

Representatives at exhibit: W. F. Smith, B. A. Brollier, W. W. Gregory, W. A. Summers, W. C. Myers, R. M. Musgrave, T. F. Weaver, Jr., Jack Hill, R. A. Hager.

Products shown: Limestone facing unit, Sonoairduct fibre forms, translucent corrugated panels, steel door frames, Polyethylene film barrier, and waterproofing products.

★ ★ ★

Exhibitor: The Celotex Corporation, Chicago, Illinois.

Representatives at exhibit: S. J. Day, Southern regional manager; Bill Mather, Texas architectural representative.

Products shown: Acoustical products.

★ ★ ★

Exhibitor: American Seating Company.

Representatives at exhibit: R. J. Winger, M. D. Shackelford, P. C. Sapp, W. S. Stewart, Southwest division manager; H. C. Powell, Dallas branch manager.

Products shown: Auditorium, church, and portable seating and furniture for special classrooms.

mr. architect,

**do
you
think**

in terms of

**genuine
glazed
ceramic
tile**

**when
you**

visualize new design-ideas?

■ Don't relegate ceramic tile to a stereotyped role in your plans — it's a medium of expression that will add life and sparkle to the new designs you have in mind. And to insure the lasting beauty and utility of your conception, you'll do well to specify Royal — the aristocrat of genuine glazed ceramic tile.

**next
time,
specify**

**ROYAL TILE
MFG. CO.
FORT WORTH**



Convention Exhibits

Exhibitor: Aluminum Company of America, Dallas, Texas.

Representatives at exhibit: Karl V. Alexander, W. E. Moerschell, Jr., Charles D. Olsson, A. E. Henschen.

Products shown: Model of Second National Bank building and panels illustrating Alcoa's Architectural colors.

★ ★ ★

Exhibitor: Detroit Steel Products Co., Detroit, Michigan and Houston, Texas.

Representatives at exhibit: E. L. McDuffee, Southern regional manager; H. K. Strock, Houston district manager; J. E. Simmons, Albuquerque branch office; F. L. Westling, San Antonio branch office; Bruce McCammon, Dallas branch office; J. R. Waldrip, Jr., Houston district office; I. B. Nevill, Jr., Houston district office; N. B. Whitten, Houston district office; Dave Crispin, sales engineer, panel division.

Products shown: Fenestra galvanized steel windows and building panel products for floors, walls, and roofs; hollow metal doors, frames and hardware.

★ ★ ★

Exhibitor: Lehman Steel Products Company, Houston, Texas.

Representatives at exhibit: Carl V. Tate, George L. Johnston, Milton S. Lehman, Joe F. Mills.

Products shown: Brown & Grist aluminum awning windows and window wall, Panaview aluminum sliding doors and windows, Pella Wood folding doors, and Burntux incinerator.

★ ★ ★

Exhibitor: Libbey-Owens-Ford Glass Company, Dallas, Texas.

Representatives at exhibit: J. G. Mackenzie, manager, Southwest region; C. F. Jones, Jr., H. A. Schofield, W. J. Christenson.

Products shown: Parallel-O-Plate, Securit doors, Thermopane

★ ★ ★

Exhibitor: Ludwoci-Celadon Company, Dallas, Texas.

Representatives at exhibit: J. M. Clifford.

Products shown: Roofing tile and quarry tile.

★ ★ ★

Exhibitor: H. R. Onorecker & Company, Houston, Texas.

Representatives at exhibit: H. R. Onorecker, Paul Welch, G. W. Parker, Ed C. Ober.

Products shown: Lighting fixtures for indoor and outdoor lighting, hand and hair dryers, and electrical signalling equipment for hospitals and industry.

(Continued on Page 26)

You're Invited
to visit the
Black-Brollier Display

when you attend the TSA-AIA Convention

BOOTHS 57, 58

on display for your inspection

DESERTONE

Black-Brollier's new limestone facing stone. See samples of all eleven colors on display.

FILON

. . . the new translucent plastic panels reinforced with nylon and fiberglass for greater strength and uniformity.

STANDARD STEEL DOOR FRAMES

. . . the standard of the building industry for homes, apartments, housing projects and commercial buildings.

BLACK-BROLLIER

3010 DIXIE DRIVE, HOUSTON, PHONE JACKSON 8-5331

Fort Worth Plant For Solar Windows Now in Operation

Formal opening of the new Solar Window Division of United States Machine Company was held recently at the new plant at 5916 East Rosedale, Fort Worth.

An inspection tour of the plant facilities was conducted by Paul Stevens, president and general manager of United Machine Company; John Petit, plant superintendent; Ed DuBose, president of Solar Corporation; and K. Wayne Grubb, designer of the Solar

Window.

Solar Windows, manufactured exclusively by United Machine Company for the Solar Corporation, are made of aluminum. Each window consists of two or more fixed panes slanted so that air moves upward through concealed air vents at the top of each pane. Vents may be opened and closed at will without affecting the appearance of the window, thus eliminating visible screens.



Interior of the First Presbyterian Church in Houston is an outstanding example of the various ways in which plaster on loth complements "An Approach to Good Design." Note the beautifully simple walls, the acoustical panel ceiling, and the richly molded ornamental work. Hobart Upjohn, FAIA, and Maurice J. Sullivan, FAIA, Architects.

You are cordially invited to visit our exhibit, showing new developments in materials and techniques of application, at the 16th Annual Convention of the Texas Society of Architects in Houston November 2, 3, and 4. Booth No. 36, Hall of Exhibits Building, the Shamrock-Hilton Hotel. C. S. Strawn, W. E. Matlock, and W. F. Wesig, Bureau representatives.

TEXAS BUREAU FOR LATHING & PLASTERING

607 Perry-Brooks Building

Austin, Texas

Women's Auxiliary Active in Arranging Details of Meeting Program

Details for the interesting and attractive special ladies program for the TSA convention, as well as many of the arrangements for other convention social events, were in charge of the Women's Auxiliary of the Houston Chapter, AIA.

Auxiliary members active on convention committees include Mrs. Eugene Werlin, general chairman, and Mesdames Albert Golemon, C. A. Johnson, Stayton Nunn, Delwin Jones, Milton Foy Martin, Birdsall Briscoe, Abel Pierce, James Dunaway, Walter Rolfe, Moce Tungate, William Paul Jones, Herbert Cowell, Baldwin Young, Thomas McCleary, G. Allen Heidbreder, Woodrow W. Alexander, John Gainey, Theo. Keller, and Harwood Taylor, committee chairmen.

Houston Engineers Plan Gulf Coast Scientific And Technical Center

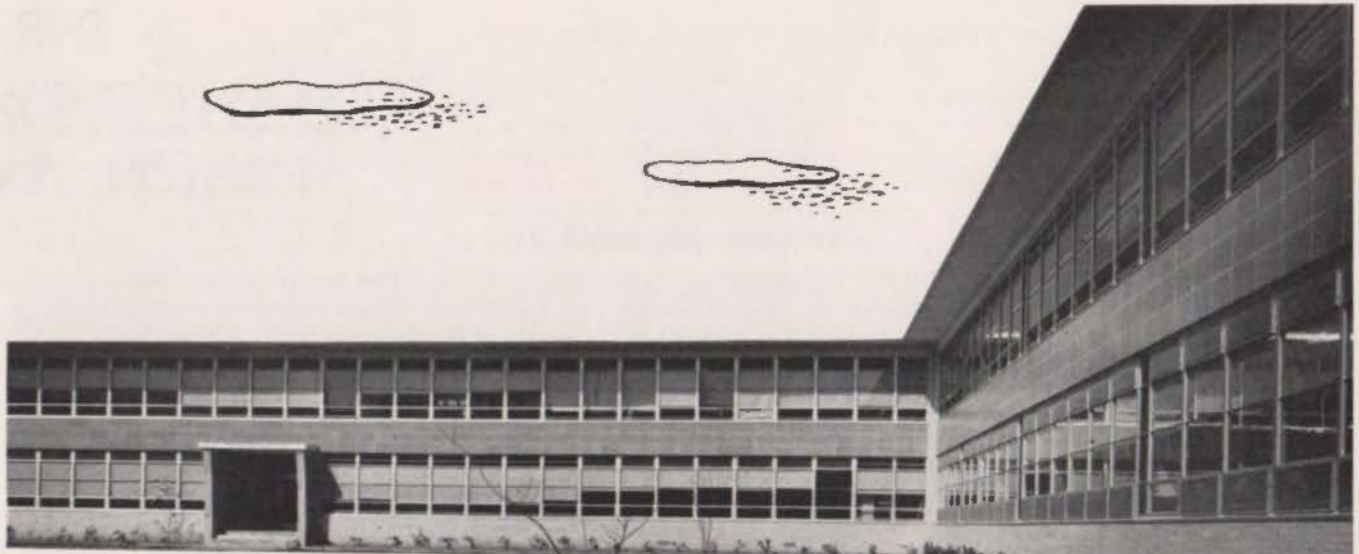
Plans for a Technical and Scientific Center sponsored by the Houston Engineers Club have been announced. The Center will provide space and professional services for the more than 9,000 members of Houston's 35 technical societies and engineering groups. The Center will be at the site of the present Engineers Club. A \$300,000 rebuilding program will transform the older building and provide spacious conference rooms, lecture halls, reading and reference room, dining and banquet rooms, storage rooms, and offices for the Houston Engineers Club.

New Lambert Plant Built in Florida For Southeast Market

Charles E. Lambert, president of the Lambert Corporation of Houston, manufacturers of paints, varnishes, lacquers and waterproofings, has announced the establishment of a factory in Orlando, Fla.

The new plant will manufacture and distribute a full line of Lambert products under the Lambco label throughout the Southeastern States.

Vincent L. Sinisi, who has had 22 years experience in the manufacture and sales of paint and waterproofing products will be president of the Lambert Corporation of Florida.



Foster Place Junior School
Houston Independent School District,
Houston, Texas
Eugene Werlin A.I.A.
C. H. Kiefner, A.I.A. Associate Architect
Milton McGinty F.A.I.A.
Coordinating Architect
General Contractor:
Schneider Construction Co. Inc.

Architectural Terra Cotta and *Ceramic Veneer*

Contemporary architecture and Ceramic Veneer are an excellent combination... because the material achieves what the plans demand! ... Flexibility is a factor... There is only one standard for Ceramic Veneer—the standard for quality. Aside from that, complete flexibility of form, line, size, shadings and color ranges is available. Durability is a necessity. Ceramic Veneer has proved itself to be almost indestructible. Ease of upkeep is important. Ceramic Veneer washes clean with soap and water! And just as the demand for contemporary architecture is growing in the West... so is the demand for the precision product we supply to forward-looking architects.

Advice on preliminary sketches, construction details, color samples and estimates will be furnished without charge. Write for data today.

GREAT SOUTHERN SUPPLY COMPANY

P. O. BOX 14307 • 6003 MURPHY AVENUE • HOUSTON 21, TEXAS

Telephone: OLIVE 0655

PROG
1955 TSA C
HOUSTON, TEXAS—

TUESDAY, NOVEMBER 1

- 8:00 a.m. GOLFER'S BREAKFAST (for both ladies and men)—Pine Forest Country Club. Sponsored by Texas Quarries, Inc. (Individuals furnish their own transportation; or, notify Burke McGinty, 2425 Ralph St., Houston, telephone JACKSON 3-4439).
- 9:30 a.m. PRE-CONVENTION GOLF TOURNAMENT (for both ladies and men)—Sponsored by Texas Quarries, Inc.
- 5:00 p.m. to 8:00 p.m. REGISTRATION—Hall of Exhibits, The Shamrock Hilton.
- 7:00 p.m. to 8:00 p.m. PRE-CONVENTION COCKTAIL PARTY—Castillian Room of The Shamrock Hilton. (Courtesy of the Host Chapter).
- 8:00 p.m. FREE TIME.

WEDNESDAY, NOVEMBER 2

- 8:00 a.m. BREAKFAST—The Shamrock Hilton, meeting room to be announced. TSA Board of Directors.
- 9:00 a.m. REGISTRATION—Hall of Exhibits.
- 9:30 a.m. OPENING OF THE CONVENTION—Azalea and Bluebonnet Rooms, The Shamrock Hilton. President Grayson Gill, presiding.
- 11:00 a.m. KEYNOTE OF THE CONVENTION—Azalea and Bluebonnet Rooms. Subject: "Philosophy of the Practice of Architecture." Speaker: Nathaniel A. Owings.
- 11:30 a.m. RECESS TO INSPECT EXHIBITS.
- 12:00 Noon FREE TIME—There will be no formal luncheon program; luncheon time is for committee meetings.
- 2:00 p.m. AFTERNOON SEMINAR—Azalea and Bluebonnet Rooms. President Grayson Gill, presiding. Walter T. Rolfe, Moderator.
a. "The Small Office: Approach to Good Design"—Ulysses Floyd Rible.
b. Discussion period.
c. "The Large Office: Approach to Good Design"—Nathaniel A. Owings.
d. Discussion period.
- 4:00 p.m. RECESS TO INSPECT EXHIBITS.
- 7:30 p.m. INFORMAL BUFFET COCKTAIL PARTY—Shamrock Hilton Pool. (Alternate location in case of inclement weather—Azalea and Bluebonnet Rooms).

THURSDAY, NOVEMBER 3

- 9:00 a.m. REGISTRATION—Hall of Exhibits.
- 9:30 a.m. MORNING SEMINAR—Azalea and Bluebonnet Rooms. President Grayson Gill, presiding. Walter T. Rolfe, Moderator.
"An Approach to Good Design"
a. "Furniture"—George Nelson.
b. Discussion period.
c. "Murals and Painting"—Seymour Fogel.
d. Discussion period.
e. "Interior Decoration"—Dorothy Draper.
f. Discussion period.
- 11:30 a.m. RECESS TO INSPECT EXHIBITS.
- 12:00 Noon FREE TIME—There will be no formal luncheon program; luncheon time is for committee meetings.
- 2:00 p.m. AFTERNOON SEMINAR—Azalea and Bluebonnet Rooms. President Grayson Gill, presiding. Walter T. Rolfe, Moderator. Announcements: Hill-Burton Hospital Program; AIA Group Disability Plan.
"An Approach to Good Design."
a. "Landscape Architecture"—Garrett Eckbo.
b. Discussion period.
c. "City Planning and Civic Design"—Harold F. Wise.
d. Discussion period.
e. "ARCHITECTURE U. S. A."—A FEATURE EVENT; first Texas showing of this important new film giving a fine cross section of the best of modern architecture in America.
- 4:30 p.m. RECESS TO INSPECT EXHIBITS.
- 9:00 p.m. to 12:00 midnight COSTUME PARTY—"SONG TITLES"—Emerald Room, Shamrock Hilton. (Jointly sponsored by Elgin-Butler Brick Company and TSA.)

PROGRAM CONVENTION NOVEMBER 2, 3, & 4

FRIDAY, NOVEMBER 4

8:00 a.m.	BREAKFAST—Shamrock Room. Sponsored by Acme Brick Company.
9:00 a.m.	REGISTRATION—Hall of Exhibits.
10:00 a.m.	MORNING SEMINAR—Azalea and Bluebonnet Rooms. Vice President R. Max Brooks, presiding. Walter T. Rolfe, Moderator. "An Approach to Good Design." a. Professor Jean Labatut. b. Discussion period. c. "You Can Sell Good Design"—Walter M. Megronigle. d. Discussion period.
	SUMMATION OF SEMINARS—Walter T. Rolfe.
11:30 a.m.	RECESS TO INSPECT EXHIBITS.
12:00 noon	AWARDS LUNCHEON—Emerald Room.
2:00 p.m.	SEMINAR AND DISCUSSION—Azalea and Bluebonnet Rooms. Vice President R. Max Brooks, presiding. Panelists: All members of the National AIA Committee on School Buildings.
3:30 p.m.	BUSINESS MEETING—Azalea and Bluebonnet Rooms. Vice President R. Max Brooks, presiding.
4:00 p.m.	RECESS TO INSPECT EXHIBITS.
4:00 p.m. to 5:00 p.m.	MEETING—TSA BOARD OF DIRECTORS—Meeting place to be announced.
7:30 p.m. to 8:30 p.m.	COCKTAIL RECEPTION—Grecian Room, The Shamrock Hilton. Sponsored by the Producers' Council.
8:30 p.m. to 12:00 midnight	PRESIDENT'S BANQUET AND DANCE—Emerald Room.
12:00 midnight	CONVENTION ADJOURNS.

SPECIAL EVENTS FOR THE LADIES

WEDNESDAY, NOVEMBER 2

11:00 a.m.	MILK PUNCH PARTY (courtesy of the Women's Auxiliary of Houston Chapter). and BRUNCH, at River Oaks Country Club (ticket required; free transportation upon reservation).
2:30 p.m.	THEATRE PARTY—at Houston's unique ALLEY THEATRE: "The Glass Menagerie," starring Fay Bainter. (ticket required).

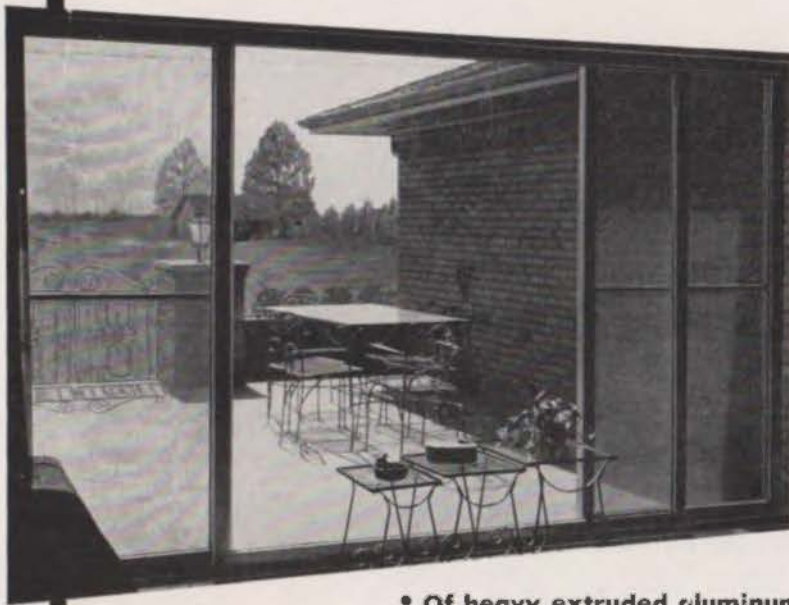
THURSDAY, NOVEMBER 3

9:30 a.m.	TOUR OF HOUSTON HOMES AND POINTS OF INTEREST. (There is no charge for this event, but ticket is required; the tour is with the compliments of the Women's Auxiliary of the Houston Chapter).
12:15 p.m.	STYLE SHOW LUNCHEON—Emerald Room, The Shamrock Hilton. (ticket required)
2:00 p.m.	GAMES—Emerald Room. Immediately following the luncheon. (No charge. Attractive prizes).

FRIDAY, NOVEMBER 4

10:00 a.m.	GET-TOGETHER—Hospitality Lounge. (Organized Women's Auxiliaries and those interested in organizing new Auxiliaries).
2:30 p.m.	SHOPPING TOUR TO DOWNTOWN STORES—Transportation is free, but reservation is required. NOTE: The above events are in addition to those listed in the regular Convention Program.

ECONOMICAL ANSWER TO A BUILDING NEED...



Binswanger's *Gulfspray*

"Lone Star" SLIDING WALL

— budget priced to fit a large building market

EASY TO INSTALL ON THE JOB

LONE STAR is a new self-contained, full-frame, sill-roller unit of heavy extruded aluminum. Because it incorporates Gulfspray manufacturing know-how it offers quality features at such an economical cost that moderate priced homes can enjoy a deluxe luxury.

- Already assembled for quick, easy installation
- With new, improved **WEATHER** and **INSECT-PROOFING** features

• Of heavy extruded aluminum

For further information contact one of our Texas warehouses

HOUSTON • DALLAS • FORT WORTH • AUSTIN
PORT ARTHUR • BEAUMONT • BAYTOWN

Manufactured by

207 N. MAIN
HOUSTON

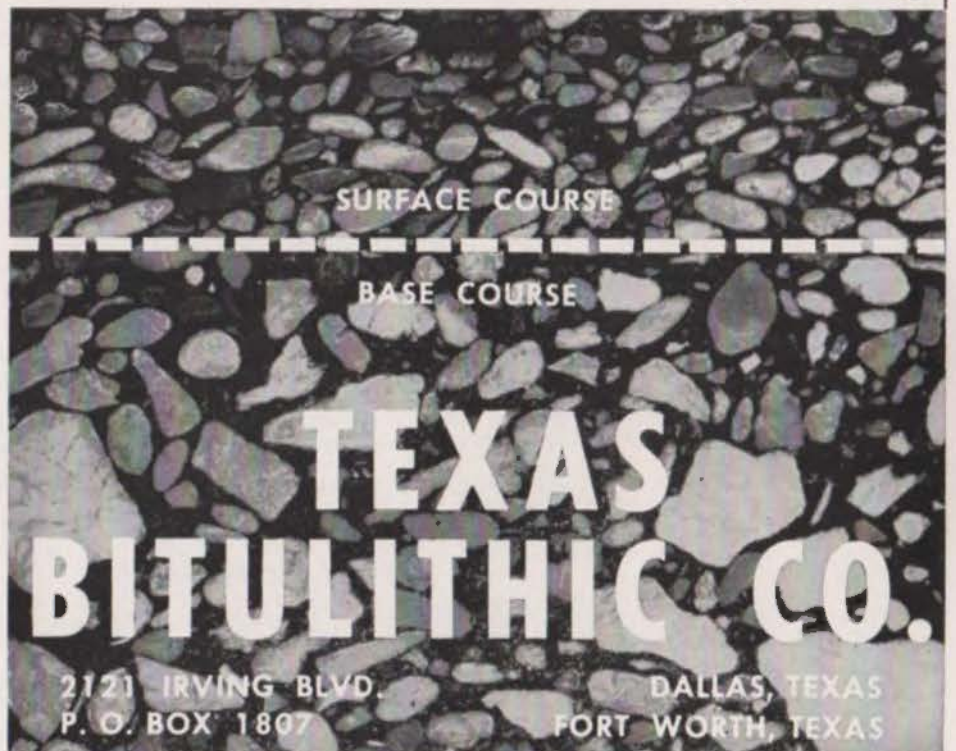


ASPHALT PAVING is a FLEXIBLE paving ... does not break like RIGID paving

Asphalt, the flexible paving, is always in contact with the foundation.

Rigid pavement becomes a beam when subgrade settles. Heavy loads break this beam. Continued application can cause pumping or additional breaking at some point several feet away. Always specify ASPHALT PAVING ... the flexible paving that costs less and lasts longer.

Standard size for Texas Bitulithic
4" paving



Texas Society of Architecture Officers



R. Max Brooks
Austin
Vice-President



Grayson Gill
Dallas
President



Fred J. Mackie
Houston
Second Vice-President



Louis F. Southerland
Austin
Secretary-Treasurer



John G. Flowers, Jr.
Austin
Executive Director



Albert S. Golemon
Houston
AIA Regional Director



Edwin W. Carroll
El Paso
Immediate Past President

Convention Exhibits

Exhibitor: Inland Steel Products Company, Kansas City, Missouri.

Representatives at exhibit: R. E. Goodacre, B. L. Luper, R. E. Whitney.
Products shown: Cellufloor, Metal trim, and metal lath and wall unit.

★ ★ ★

Exhibitor: Bird & Son., Inc., Shreveport, Louisiana.

Representatives at exhibit: J. D. Johnston, R. F. Jenkins, C. C. Futrell, J. D. Johnston, Jr., T. D. Blanchard.

Products shown: 15" by 36", 300 pound Architect shingle.

★ ★ ★

Exhibitor: Flour City Ornamental Iron Company, Minneapolis, Minn.

Representatives at exhibit: Ralph L. McKenzie.

Products shown: Reversible window and simple spandrel panels and various finishes and aluminite treatments.

★ ★ ★

Exhibitor: U. S. Burnite Corporation, Austin, Texas.

Representatives at exhibit: William H. Burnett, executive vice president.

Product shown: Burnite building blocks and bricks.

★ ★ ★

Exhibitor: L. R. Ward Steel Products Company, Dallas and Houston, Texas.

Representatives at exhibit: Lowell Henderson, Charles Doscher, Wallace Leth.

Products shown: Unistrut partitioning materials, electrical and mechanical installations, shelving and rack materials, and Gripstrut safety steel grating.

★ ★ ★

Exhibitor: Cavallini Bros. Venetian Mosaic Co., San Antonio, Texas.

Representatives at exhibit: M. D. Cavallini.

Products shown: Mosaic samples and commercial and artistic works.

★ ★ ★

Exhibitor: Texas Bureau for Lathing and Plastering, Austin, Texas.

Representatives at exhibit: C. S. Strawn, executive secretary; W. E. Mottack, Jr., field representative; W. F. Wesig, field representative.

Products shown: New uses of lath and plaster materials.

★ ★ ★

Exhibitor: The Southwell Company, San Antonio, Texas.

Representatives at exhibit: W. P. Southwell, Jr., W. P. Southwell, Sr.

Products shown: Bronze and aluminum tablets and letters.

Exhibitor: Ceco Steel Products Corporation.

Representatives at exhibit: C. G. Bruner, J. W. Cannon.

Products shown: Products showing reinforced concrete floor joist construction, steelform construction, steel joist, reinforcing steel service, and steel and aluminum windows.

★ ★ ★

Exhibitor: Valley Metal Products Company, Plainwell, Michigan.

Representatives at exhibit: Clark K. Carlisle, sales promotion engineer; Robert V. Geis, sales manager.

Products shown: Aluminum windows and aluminum windows and curtain wall.

Exhibitor: Cupples Products Corporation.

Representatives at exhibit: Alan Green, Robert Hoffman.

Products shown: Curtain wall construction, with latest developments in windows and spandrel panels.

★ ★ ★

Exhibitor: Lambert Corporation.

Representatives at exhibit: C. E. Lambert, J. M. Mulvey, Mrs. Verna Youngblood.

Products shown: Complete line of Lambco protective coatings.

★ ★ ★

Exhibitor: Sperzel Company.

Representatives at exhibit: H. H. Reinhard, R. H. Harris.

Products shown: Plastic toilet seats.

How to Plan for Lasting Beauty and Safety on Steps, Landings

MOLDED RUBBER TREADS WITH LANDING TILE TO MATCH IN SURFACE DESIGN AND COLOR . . .

ACADEMY Heavy Duty treads and landing tile make distinctively beautiful and permanent installations in business buildings, schools, churches, homes. They provide safety with their slip-proof surface design and are easily applied to any type step or floor material—wood, metal, concrete, tile—with our water-proof bonding cement. Marbleized colors or black— $\frac{1}{4}$ " thick. Landing tile are 26" x 26". Ruggedly durable under hardest traffic conditions. Molded completely in one tread or tile unit—not laminated. Color goes through to underside. Treads can be ordered in one piece up to 62" width, 12 $\frac{1}{2}$ " depth.



$\frac{1}{4}$ " Thick Square or Curved Nose

Write for literature. Distributors conveniently located to serve you.

ACADEMY RUBBER COMPANY
3031 Twelfth Street Northwest, Canton 8, Ohio



End leaky, messy, dirty breaks between tub, wall and floor. Quick, simple. Guaranteed permanent and leakproof. Cheaper than constant, costly repairs. Fit all types of tubs.

SEND FOR FREE CATALOG TODAY

"If it isn't a Lucke It isn't LEAKPROOF"

W. B. LUCKE, Inc.
WILMETTE ILLINOIS

LUCKE Guarantees
Appearance, Economy and Health
to Every Bath Room

TSA Directors



David S. Castle
Abilene
West Texas Chapter



Winfred O. Gustafson
Austin
Central Texas Chapter



Albert Golemon
Houston
AIA Regional Director



Ernest Langford
College Station
Brazos Chapter



Terrell R. Harper
Dallas
Dalais Chapter



Harold Calhoun
Houston
Houston Chapter



Robert P. Woltz, Jr.
Fort Worth
Fort Worth Chapter



William G. Wuehrmann
El Paso
El Paso Chapter



Warren C. Suter
Mission
Lower Rio Grande Chapter



O. L. Puckett
Big Spring
Panhandle Chapter



Otis F. Johnson
Corpus Christi
Coastal Bend Chapter



R. C. Heartfield
Beaumont
Southeast Texas Chapter

Not Shown:
Charles Huie, Jr.
San Antonio
San Antonio Chapter

**Dennis DuPriest
Of Insurance Board
Speaks to Houston Group**

Dennis DuPriest of Austin, rate actuary for the State Board of Insurance Commissioners, spoke before the October meeting of the Houston Chapter, AIA at the Texas State Hotel.

Mr. DuPriest, introduced by W. B. Abbott of Langham, Langston & Burnett of Houston, discussed rate setting, building codes, fire codes and procedures involved in actuarial work. A question-and-answer period followed his speech.

The SBIC official was accompanied to the meeting by Cecil Goodman, territorial representative for the Board of Insurance Commissioners.

**Promotions Announced
For Four Executives
At Royal Tile Plant**

Promotions for four executives and two plant engineers at Royal Tile Manufacturing Company of Fort Worth, have been announced by Horace H. Porter, Royal president.

Mrs. H. H. Porter, formerly vice president of the company, is now first vice president in charge of advertising.

New vice presidents are John F. Collins, secretary-treasurer of the company; Miss Marion Yater, vice president in charge of sales; and G. E. Sladek, vice president in charge of production.

In other promotions, Edwin Miller was made plant superintendent and Stanley Cooper chief ceramic engineer.

**Rites for Don Smith,
Architect and Former Mayor,
Held in Sweetwater**

Final rites for Don Smith, 51, former Sweetwater mayor who died of a heart attack, were held recently in the First Presbyterian Church at Sweetwater.

The Rev. Charles Harnest, pastor, officiated. Burial was in the Sweetwater Cemetery.

A prominent architect, Smith was also active in civic affairs. He had been mayor from April, 1954 to April, 1955, when his term on the city commission expired.

Surviving are his wife and two children, Don Paul Smith and Mrs. Melvin Hayley, all of Sweetwater; his mother, Mrs. Clara Smith of Fort Worth; four brothers, R. S., Ivan H. and Albert L., all of Fort Worth, and A. B. of Houston; five sisters, Mrs. Thomas E. Thorpe of Modesto, Calif., Mrs. Leon Terrell of Venezuela, Mrs. R. M. Craver and Mrs. S. R. Chambers, both of Fort Worth, and Mrs. Thomas Keenan of Columbus, Ohio. The Rev. Thomas Keenan is a former pastor of the First Presbyterian Church in Sweetwater.

**Riba Heads Office
For Clay Products Group**

Lothar Riba is the new head of the Dallas field engineering office of the Clay Products Association of the Southwest, regional trade group of brick and tile manufacturers.

Formerly with the Corps of Engineers, U. S. Army, in Bismarck, N. D., Mr. Riba recently returned from Washington, D. C. where he completed a two-month course with the Structural Clay Products Institute, national association of brick and tile manufacturers, studying the technology and promotion of clay products.

**Predicts Air-Conditioning
As "Standard Equipment"
In \$10,000 Homes by 1958**

Year-round air conditioning will be an accepted feature in at least 25 to 30 per cent of new homes selling for \$15,000 or more by the end of 1955, it has been predicted by Edwin E. Hokin, president of the Union Asbestos & Rubber Company of Chicago.

And, by 1958, he believes, it will be standard equipment in almost every new house selling for \$10,000 or more.

NEW Josam "MIGHTY MIDGET"

**Eliminates Water Hammer in supply lines
Small size — Budget priced**

Ideal for commercial, institutional and residential installations. The shell is aluminum alloy and contains the compression molded Absorbo tube which absorbs the water hammer shocks. Leak proof . . . cannot wear out. 12 cu. in. displacement. 1/2" threaded connection.

Call or write for literature on the "Mighty Midget" and the entire line of Josam Shock Absorbers.



JOSAM MANUFACTURING CO.

MICHIGAN CITY, INDIANA
District Representatives

JOE P. DILLARD
1531 Edison St.—RI-9691
Dallas, Texas

R. B. ARNOLD
1309 Anita Ave.—JA-3074
Houston, Texas

**Sparkling White Marble
and 20 Other Colors
for Roofing & Terrazzo**

4 Shades of Green Now So Popular

We have an inventory of 100,000 bags; can fill orders for one or more colors immediately

DEZENDORF MARBLE COMPANY

2800 E. 17th ST.

PHONE 2-3440

AUSTIN, TEXAS

Chairmen for TSA & SIA Committees



Murrell Bennett
Dallas
Architectural Practice



Bartlett Coker
San Antonio
Awards & Scholarships



Hubert H. Crane
Fort Worth
Home Building Industry



Marvin Eichenroht
San Antonio
Preservation of Historic Buildings



Preston M. Geren, Sr.
Fort Worth
Texas Construction Industry Council



Charles Huie, Jr.
San Antonio
Chapter Presidents



Karl Kamrath
Houston
Capitol Plan



Ernest Langford
College Station
Education



Stayton Nunn
Houston
School Buildings



Joseph J. Patterson
Fort Worth
Collaboration of the
Design Professions



Harry D. Payne
Houston
Insurance



George F. Pierce, Jr.
Houston
Chapter Affairs



Louis F. Southerland
Co-Chairman
Austin
Legislative



Herbert Tatum
Dallas
Urban Design & Housing
By-Laws



Arthur E. Thomas
Dallas
Hospitals & Public Health
Institute Fellowship



David C. Baer
Houston
Publication Board



Edward L. Wilson
Fort Worth
Architectural Foundation Board



Thomas D. Broad
Dallas
Jury of Fellows

R. Max Brooks
Austin
Co-Chairman
Legislative

LaVerne Brooks
Dallas
Texas Architecture - - 1955

Harold Calhoun
Houston
Public Relations

Warren C. Suter
Mission
Centennial Observance

Edwin W. Carroll
El Paso
AIA Centennial

Ralph Cameron
San Antonio
Research

Now! ANACONDA DISTRIBUTORS CAN BE PROMPTLY SERVED FROM OUR NEW DALLAS WAREHOUSE

This means better service when you specify "ANACONDA"—for our warehouse stock is available to distributors of American Brass materials serving the Southwest. Your contractor can depend on prompt deliveries of these Anaconda products:

- 85 Red Brass Pipe
- Copper Tube, Types K, L and M
- Copper Refrigeration Tube
- Roofing Copper

Our District Sales Offices in Texas will be glad to serve you any time. Write, wire or phone.

THE AMERICAN BRASS COMPANY
Waterbury 20, Connecticut

**DALLAS DISTRICT SALES OFFICE
AND WAREHOUSE**
5531 East University Boulevard, Dallas 6, Texas
Tel: FOrest 8-6312

HOUSTON DISTRICT SALES OFFICE
1114 Texas Avenue Building, Houston 2, Texas
Tel: CApitol 5-3267

Officers & Convention Chairmen Houston Chapter



Thompson McCleary
President
Houston Chapter



Baldwin N. Young
Houston Chapter
Vice-President &
State Convention
Chairman



Hamilton Brown
Houston Chapter
Chapter Convention Chairman



Mace Tungate
Houston Chapter
Second Vice-President



Gunter W. Koetter
Houston Chapter
Secretary



Charles F. Sullivan
Houston Chapter
Treasurer



The PROOF of a building's age is behind these doors!

Five seconds behind these doors, and you *know* your building's age!

Notice the plumbing fixtures. If they are off-the-floor . . . your building is new forever. If not . . . it is obsolete when the doors first open.

Off-the-floor fixtures installed today will never give away the age of your buildings. Year after year, they will continue to contribute to the desirability—and marketability—of your investment. They add spaciousness. They free washrooms of litter-traps and breeding grounds for bacteria. They do away with obstacles to easy cleaning and hospital-like sanitation.

In today's major buildings, more than 800,000 such fixtures are sup-

ported on the ZURN SYSTEM. You should look into the reasons why. You will find, among other things, that Zurn-engineered, patented features simplify installation and alignment. The entire stress is on the Zurn fitting—not on the wall. And ZURN SYSTEMS never interfere with future alterations, but often make them easier.

Buildings age fast enough. Do not give yours a running start by designing washrooms that are obsolete when the doors first open.

Before planning your next building, be sure to write for the helpful new booklet, "Behind Closed Doors." It is your guide to modern, sanitary washroom decor. 110-1



The ZURN ZERO ZONE[®] is created by mounting off-the-floor plumbing fixtures on behind-the-wall ZURN SYSTEMS. This permits the highest degree of restroom sanitation to be attained and maintained. All major plumbing manufacturers make fixtures to fit the ZURN SYSTEM.

COPYRIGHT 1955 — J. A. ZURN MFG. CO.

J. A. ZURN MFG. CO.

PLUMBING DIVISION

ERIE, PA., U. S. A.

REPRESENTED BY

ALBERT A. STERLING, Jr.

2611 Crocker St.

HOUSTON 19, TEXAS

I. P. NEWBY

4431 Maple Avenue

DALLAS 14, TEXAS

J. A. ZURN MFG. CO.
Erie, Pa. U. S. A.

Please send new booklet: "BEHIND CLOSED DOORS"

Name _____ Title _____
Company _____
Type of Business _____
Address _____
City _____ State _____

Convention Exhibits

Exhibitor: Wright Rubber Division, Mastic Tile Corporation of America, Houston, Texas.

Representatives at exhibit: Bill Strout, sales manager; Lewis Greenway, district manager; John Strickland, Dallas representative.

Products shown: Rubber and asphalt tile.

We regret that information on all exhibitors was not available in time to be included.

Steel Kitchen Cabinet Specification Sheet Is Prepared by Association

As a guide to good construction minimums and as a quality guide to the consumer, an architect's specification sheet on steel kitchen cabinets has been prepared by the Steel Kitchen Cabinet Manufacturers Association. The sheet was prepared under the direction of the technical committee of the association.

The approved specification includes the following provisions:

Material: Cabinets shall be fabricated from sheet steel of furniture quality.

Construction: All wall cabinets shall be completely enclosed units with solid steel bottoms, tops, backs and sides.

All doors shall be insulated with sound-absorbent material, equipped with resilient bumpers to prevent metal to metal contact in closing, with all face members free from bolts or screw heads, except where fastenings for assembly or mounting may be used in flanges.

Finish: All metal surfaces shall be properly prepared to receive synthetic enamel finish, baked to withstand the water immersion, impact, humidity, salt spray, draw, abrasion, hot foot, scratch hardness, weatherometer and alkali tests, as prescribed by recognized testing laboratories for appliance finishes.

The specifications listed are minimum standards and some steel kitchen manufacturers exceed these standards.

Copies of the specification sheet may be obtained by writing to Arthur J. Tuscany, Jr., executive secretary, Steel Kitchen Cabinet Manufacturers Association, 1008 Engineers Building, Cleveland 14, Ohio.



Church Architectural Guild Winner

The Saint Luke's Episcopal Church, in San Antonio, won for architect Henry Steinbomer, TSA-AIA of San Antonio, an award of merit in the Church Architectural Guild competition, a national competition conducted under AIA standards.

Hans Knoll Killed In Auto Accident October 9 in Cuba

Hans Knoll, famed designer and president of Knoll Associates and Knoll-Drake Industries, the latter a Texas concern with headquarters in Austin, was killed October 9 in Cuba, according to reports reaching Austin. It was stated that a truck skidded into a parked car in which Mr. Knoll was at the wheel. Further details were not available at press time.

Edward L. Wilson, TSA-AIA, National Treasurer, Speaks At New Orleans, Saint Louis

Edward L. Wilson, TSA-AIA of Fort Worth, national treasurer of the AIA, spoke recently before the Gulf States Regional Conference on Document 330 of the AIA. Mr. Wilson, a former TSA president, spoke on the same topic October 14 at the Central States Regional Conference in Saint Louis.

\$ IT'S A GOOD BUSINESS INVESTMENT



AUTOMATIC, GAS-FIRED

Janitrol UNIT HEATERS

Get full details at

CATLETT ENGINEERS

9020 Garland Road — Dallas, Texas

N. P. Anderson Building
Fort Worth, Texas

Whitest by
Any
 standard

The extreme whiteness of Trinity White Cement is obtained by selection of raw cement-making materials which are remarkable for absence of color. There is no off-color cast in Trinity White to detract from the beauty of the finished structure.



Trinity is the *whitest* white cement judged by any standard. It is whitest in the bag . . . whitest in the mix . . . whitest in the finished job! You can see the extra whiteness with the naked eye! Trinity White is a true portland cement. It meets all Federal and ASTM specifications. Use it for architectural concrete units; stucco, terrazzo; cement paint; light-reflecting surfaces; mass or contrast; or wherever the purity of white and the purity of color tints is desirable in concrete or masonry. Trinity Division, General Portland Cement Co.



as white  as snow

. . . plain or waterproofed

Trinity White
 THE WHITEST WHITE CEMENT

A Product of GENERAL PORTLAND CEMENT CO. • Chicago • Dallas • Chattanooga • Tampa • Los Angeles

Membership Roster For Society Of Architects — 1955

BRAZOS CHAPTER

Corporate Members

Baker, Arch C., P. O. Box 1043, College Station
Caudill, W. Wayne, P. O. Box 1351, Bryan
Hildebrandt, Edward F., Washington County
State Bank Building, Brenham
Langford, Prof. Ernest, P. O. Box 101, College
Station
Mayfield, Henry, Box 1046, Bryan
Nash, William E., Box 41, Bryan
Vrooman, Richard, A&M College, College Station

Associate Members

Akins, Alton L., A&M System Architect, 316 Sys-
tem Admin. Bldg., College Station
Bellomy, Clean C., 425 South Main Street, Bryan
Evans, Benjamin H., Engineering Experiment Sta-
tion, 320 Engineering Bldg., College Station
Gooding, Harry W., 205 Fairview, Bryan
Hammons, Doil S., 2600 Todd St., Bryan
Holleman, Theo R., Dept. of Arch., A&M College,
College Station
Lawrence, Charles E., 425 South Main Street,
Bryan
Lawyer, Franklin D., Dept. of Architecture, A&M
College, College Station
Pianto, E. N., A&M System Architect, 316 Sys-
tem Admin. Building, College Station
Ransom, Harry, P. O. Box 935, Bryan
Robinson, K. Frank, P. O. Box 5176, College
Station
Rotsch, Melvin M., A&M College, College Station
Vetter, G. K., 303 Bolton, College Station
Wagner, William G., Dept. of Architecture,
Texas A&M College, College Station

CENTRAL TEXAS CHAPTER

Corporate Members—Austin

Baldridge, Doyle M., 4005 Jefferson
Barr, Howard R., 203 Perry Brooks Building
Bowman, Jon A., 1806 Mohle Drive
Brooks, R. Max, 203 Perry Brooks Building
Brush, Carlton, 4000 Lullwood Road
Bullfer, J. Robert, 707 E. 32nd Street
Castle, Henry G., Jr., 1605 W. 35th Street
Cottingham, Worth, Jr., 828 Brown Building
Day, Fred Winfield, Jr., 3203 Clearview Drive
Dieter, Frederick W., 1907 Arthur Lane
Dornberger, Werner W., 3416 Hillview
Driscoll, Dan J., 3416 Hillview
Fehr, Arthur, 502 E. Fifth Street
Gannaway, Allwyn C., 2004 Meadowbrook
Gannaway, Herbert S., Office of Sup'v. Archi-
tect, University of Texas
George, Walter E., Jr., 2410 San Antonio Street
Goldsmith, Goldwin, 1902 San Gabriel
Granger, Charles T., 502 E. Fifth Street
Greeven, Alton E., 2816 Hemphill Park
Gustafson, W. O., 1313-A S. Congress
Harris, Harwell H., 915 W. 22nd
Jessen, H. E. (Bubi), 2816 Hemphill Park
Jessen, Wolf E., 2816 Hemphill Park
Kermacy, Martin S., 2816 Wooldridge Drive
Kuehne, Hugo F., 203 Perry Brooks Building
Leipziger-Pearce, Hugo, 1314 Wayside Drive
Lundgren, Leonard J., 3932 Balcones Drive
Mayhall, Temple B., 1906 Raleigh
Maurer, Edward J., 1508 Woodlawn
McMath, Hugh L., School of Arch., Univ. of
Texas
Millhouse, Charles A., 2816 Hemphill Park
Moore, Walter C., Jr., 4707 Parkcrest Drive

Niggli, Emil, 4601 Crestway
O'Connell, Wm. R., 504 W. 7th
Page, C. H., Sr., P. O. Box 936
Page, C. H., Jr., 305 W. 11th
Page, George M., P. O. Box 855
Page, Louis C., Jr., P. O. Box 855
Pendley, Claude M., Jr., 2410 San Antonio Street
Phillips, Henry W. Jr., 3103 Lafayette Street
Pollard, James J., c/o University of Texas
Probst, Victor G., 504 W. 7th
Roessner, Roland G., 3414 Foothill Terrace
Rowe, Richard S., P. O. Box 936
Scott, John Linn, 406 W. 17th Street
Southernland, Louis F., P. O. Box 855
Stautz, Carl Henry, 1704 Exposition Blvd.
Thomas, Roy L., 2812 Hemphill Park
Turley, Hans E., 19 Scott Crescent
Walling, George L., 1506 N. Loop Blvd.
Watson, Mrs. A. R., P. O. Box 270
White, James Roy, 203 Perry Brooks Building
White, Robert L., Off. of Sup'vr. Architect, Uni-
versity of Texas
Wukosch, Eugene, P. O. Box 7788, University
Station

Corporates—(out of town)

Logsdon, Vail E., 2317 Manticello, Temple, Texas
Rucker, William G., Jr., 818 First National Bank
Building, Temple

Associate Members—Austin

Allen, John Chiles, 406 W. 17th
Beran, Ed E., P. O. Box 855
Eppes, Bill Gorton, 1209 Guadalupe
Goeth, Ralph, 200 Colorado
Gubbels, Jac L., 2515 Wooldrige
Hoesli, Bernard H., 3110 West Avenue
Koeber, Phillip G., 1512 Woodlawn, Apt. 3
McAdams, Kelly R., 1425 Preston Avenue
Nuhn, Kenneth M., 2302 Rundell Place
Pressler, Paul, 2520 Spring Lane
Riley, Barton D., 1902 Arthur Lane
Shefelman, Thomas, 502 E. 5th Street
Winkelhake, Claude A., 409 Nalle Building
Youngblood, Robert L., 3820 Duval

Jr. Associates—Austin

Brown, Hyder Joe, 4801 West Park Drive
Haizze, Thomas W., 2000 Guadalupe Street
Kroll, H. Conrad, 4507 Oakmont
Looke, Dudley, 3305 Speedway

TSA Members—(out of town)

Johnson, James E., 202 North Crockett, Cameron

COASTAL BEND CHAPTER

Corporate Members—Corpus Christi

Anderson, Walter H., 210 Jones Bldg.
Bright, James Micic, 337 Angela
Brack, Victor, 210 Jones Bldg.
Capron, Charles Earle, 3636 Monterey
Christian, Ben E., 921 Ocean Drive
Donnelly, C. P., 702 Texas Avenue
Evans, Lynn A., 807 Coleman
Evans, Roy, 3654 Lawnview Street
Ford, Earl R., Jr., 305 S. Choparral Street
Hamon, E. Dexter, 912 Ocean Drive
Hamon, Everett E., 715 S. Tancahua
Hans, Joseph A., Jr., 1317 Third Street
Hardy, Nat W., 59 Country Club Place
Johnson, Otis F., 141 Naples Street
Morse, Eugenia Maude, 6017 Rio Vista
Pennington, Sam Allen, Jr., 4330 Aspen
Skelleth, Benj., P. O. Box 7402

Smith, Vernon, 1733 Brownlee
Smyth, Joe G., Jr., Gulf Security Bldg.
Smyth, Needham B., Gulf Security Bldg.
Tanner, Carrol V., 3340 Floyd Street
Whitett, William, 3735 Aransas
Wilde, Walter Ernest, 1041 Chamberlin
Wood, William C., 502 Wilson Bldg.

Associate—Corpus Christi

Winston, Lloyd, 533 Pennington

Jr. Associate Members—Corpus Christi

Hiester, Jimmy W., 140 Cole Street

DALLAS CHAPTER

Corporate—Dallas

Adams, Jay H., 518 W. Davis
Adams, Moffatt D., 518 W. Davis
Ahschlager, Walter W., P. O. Box 6505
Alexander, Geo., 2819 Welborn
Anderson, J. Edward, 425 S. Field Street
Atkinson, J. B., 5906 Velasco
Bennett, J. Murrell, 2812 Fairmount
Benson, William E., 5738 N. Central Expressway
Berry, Harold A., 416 Burt Building
Biederman, Sam., Nat'l City Bank Bldg.
Blocker, Harry E., Jr., 6825 Park Lane
Boatwright, Cecil Miller, Jr., 1948 Kessler Park-
way
Boyle, John Allen, 6115 Berkshire Lane
Braden, David R., 1435 Cedar Hill
Broad, Thomas D., Reserve Loan Life Building
Brooks, LaVere, 1330 N. Industrial
Brown, Stanley, 4012 Cedar Springs Rd.
Bryan, Ralph, 9th Floor, 1114 Commerce Street
Buford, Frederic S., 326 Interurban Building
Burke, Macyl A., 9618 West Lake Highland Drive
Butler, Robert Warren, 13777 North Central
Expressway—Route 7
Carsey, Jon D., 3106-A Fairmount
Cavitt, L. C., Jr., 4801 Lemmon Avenue
Cheek, James B., 1901 1/2 N. Harwood
Christensen, George E., 4340 N. Central Ex-
pressway
Collins, G. Mallory, 2921 Fairmount
Cook, Walter W., 12816 Preston Road
Cooper, Peyton G., 709 Gibraltar Life Building
Corgan, Jack M., 507 Melba Building
Crittenden, Norman W., 2814 Fairmount
Crown, Phillip T., 410-A W. 8th Street
Dahl, George Layton, 2101 N. St. Paul
Danna, John B., 2902 Routh
Davis, Edward C., Res. Loan Life Bldg.
Dean, Thomas Scott, 3607 Marsh Lane Place
Decker, Howard G., Jr., 2814 Fairmount
DeFonds, Ardery V., 201 Thomas Building
Dewitt, Roscoe P., 2025 Cedar Springs
Dryden, Horace Ewing, Jr., 2921 Fairmount
Edwards, George W., 1509 A Cochran
Erwin, John Bruce, 4223 Shore Crest Drive
Feinberg, Raymond S., 326 Interurban Bldg.
Fisher, J. Herschel, 4519 N. Central Expressway
Fooshee, Marion F., 1901 1/2 N. Harwood
Foster, Dales Young, 2812 Fairmount
Freeburg, Charles Robert, 25 1/2 Highland Park
Shopping Village
Gamble, Eugene B., 6810 Harry Hines Blvd.
Gideon, Howard W., 13616 Preston Road
Gill, Grayson, 1913 San Jacinto
Goodwin, Robt. D., 4801 Lemmon Avenue
Gordon, Joseph F., 4425 Greenville Avenue
Hamilton, Earle Grady, Jr., 6882 Avalon
Hardison, Fred L., 2025 Cedar Springs
Harper, Terrell R., 710 Thomas Building

SPECIFY WINDOWS WITH IDENTIFIED QUALITY

Today, architects and their clients can be sure of getting quality windows when they specify windows that bear this seal.



It is the Quality Approved Seal of the American Wood Window Institute, known by builders and the public as an emblem of certified quality. IDEAL All-Wethr Windows bear the A.W.W.I. Seal which means that they meet or exceed the strict standards of the Institute covering quality of materials; proper assembly; air infiltration; preservative treat; and efficiency of balancing devices.

IDEAL All-Wethr Windows also meet or exceed all the quality requirements of U. S. Commercial Standard 190-53.

A.W.W.I. SEAL KNOWN TO MILLIONS!

Millions of people are now being told how easy it is to identify a quality window. The story is being told all across the country through widely circulated trade and consumer magazines.

For the homes you plan, specify wood windows—wood windows that bear the A.W.W.I. Seal. It is your assurance of highest quality.

S P E C I F Y



ALL-WETHR WINDOWS

SOLD AT BUILDING MATERIAL STORES
MADE BY IDEAL COMPANY : : WACO, TEXAS
MANUFACTURING DIVISON OF WM. CAMERON & CO.



we
would
like
to
extend
a
cordial
invitation
to
members,
wives
and
guests



ANNUAL
CONVENTION

booths 34 and 35
FINGER CONTRACT
SUPPLY CO.

3131 GULF FREEWAY • HOUSTON

Harrell, Geo. F., 3840 Turtle Creek Drive
 Hefley, William Tell, 5526 Dyer Street
 Hiddell, William H., Jr., 2814 Fairmount
 Hill, Bertram C., 5528 Live Oak
 Hudson, James Elmore, 5546 Glenwick Lane
 Jarvis, Donald Edward, 4519 Central Expressway
 Jones, Harold W., 100 Glass Street
 Joseph, Will C., 803 Praetorian Building
 Kean, Frank D., 201 Thomas Building
 Kemp, Harris A., 710 Thomas Building
 Klamberg, Wade H., 3832 Bryn Mawr
 Kleuser, M. C., 318 Cadiz
 Lane, Clifford J., 6810 Harry Hines Blvd.
 Lane, Roy E., 3469 Amherst
 Leinbach, Charles H., 600½ East Jefferson
 Lemmon, Mark, 201 Thomas Bldg.
 Manning, Dean C., 4804 Wateka Drive
 McCamman, James N., 5646 Milton Avenue
 Merrill, W. Ralph, 501 Trinity Univ. Bldg.
 Meyer, Howard R., 2907 Maple Avenue
 Mills, Joseph M., 404 Adolphus Tower
 Minor, Charles Carter, 2133 McKinney Avenue
 Morgan, Jack Hubert, 7007 B-D-O-Link Drive
 Moseley, Hal M., 5544 Willis
 Nelson, Donald S., Reserve Loan Life Building
 O'Bannon, Lucius E., 2610 Fairmount
 Oglesby, Enslie Orsen, Jr., 2906 North Fitzhugh
 Orth, William A., 3445 Hanover
 Perkins, John A., 2203½ Cedar Springs
 Perry, Robert J., 4801 Lemmon
 Pierce, A. H., 2708 Routh
 Prinz, Harold, 1330 N. Industrial Blvd.
 Resch, Niles F., 3939 Travis
 Richter, Will S., 815 N. Winnetka
 Rooth, Carl H., Reserve Loan Life Bldg.
 Russ, Thomas A., 2151 Ft. Worth Avenue
 Sandfield, Max M., 3722 Bowser
 Smith, James Wadsworth, 2151 Ft. Worth Avenue
 Smith, Harwood Knox, 1321 Mercantile Bk. Bldg.
 Smith, Vernon S., 2151 Ft. Worth Avenue
 Stueber, Theodore H., 5410 McComas
 Swank, A. B., Jr., 2025 Cedar Springs
 Tatum, Herbert M., 2812 Fairmount
 Thomas, Arthur E., Trinity Universal Bldg.
 Thompson, I. Gayden, 5711 Swiss Ave.
 Thompson, John Rowland, 3203 Eisenhower Drive
 Thompson, Henry B., 301 Burt Bldg.
 Tracy, H. L., 3812 Beechwood Lane
 Urban, Stanley Gregory, 1003 Texas and Pacific
 Bldg.
 Vaughn, Harold, 308 S. Akard, Room 803
 West, John Stark, 8715 Vinewood Drive
 Westfall, Delbert C., 501 Trinity Universal Bldg.
 White, Latham, 2214 Cedar Springs
 White, Robert D., Jr., 3409 Oak Lawn Avenue
 Williams, Clifford K., 4215 Ridge Rd.
 Willimon, Edward Lloyd, 2713 Canton Street
 Wiltshire, John P., 4403 Camden
 Wittchell, Chas. B., 2214 Cedar Springs
 Woerner, F. J., 1008 Stonewall
 Worley, Ben Frank, 636 Winston
 Wright, Ernest, Jr., 4350 N. Central Expressway
 Yoakum, Hal O., 3433 Southwestern Blvd.
 Yost, William George, 9836 Bowman Blvd.

Corporate Members—(out of town)

Brown, John, 502 M. P. Bank Bldg., Sherman
 Chapman, Jay L., 502 M. P. Bank Bldg., Sherman
 Cox, John V., 411 Texarkana Nat. Bank Bldg.,
 Texarkana
 Downing, James L., 406 N. High Street, Hender-
 son
 Gahmert, Louis B., P. O. Box 10, Mount Pleasant
 Grogan, Douglas R., 1806 John Smith, Irving
 Hazelwood, Otis L., 1 & 2 Link Bldg., Palestine
 Hubach, Carl C., 1211 E. North Street, Kilgore
 Kilmer, Roy Henry, 3819 Pine Street, Greenville
 Lightfoot, Will H., 10 First Street N. E. Paris
 Maffitt, Theo. S., 510 Sycamore, Palestine

Morgan, George W., 529 Willow Road, Irving
 Ray, Sidney W., 605 Fair Foundations Bldg.,
 Tyler
 Reinheimer, Robt. J., 411 Texarkana Nat'l. Bank
 Bldg., Texarkana
 Simons, Thomas Shirley, 1723 S. Broadway, Tyler
 Simons, Thomas Shirley, Jr., 1723 S. Broadway,
 Tyler
 Smith, E. Carlyle, P. O. Box 1088, Grand Prairie
 Weber, Carl, 1005 Grove Street, Tyler
 Wilcox, E. Davis, 211 Professional Bldg., Tyler
 Williams, David R., 324 N. Sterling Street,
 Lafayette, La.

Associates—Dallas

Anderson, Aubrey D., 6619 Covington Lane
 Canaan, Gershon, 6269 St. Moritz Street
 Clutts, James A., 5650 W. Lovers Lane
 Crook, Edwin T., 6730 Vanderbilt
 Cummings, Raymond H., 2507 Sunset
 Fretz, E. A., Jr., 711 Liberty Street
 Goeldner, Paul, 8548 San Fernando Way
 Griffin, Joseph A., 6505 Stefani Drive
 Hall, Warren H., 5941 Meaders Lane
 Hewitt, Chester H., 2704 Westminster
 Huddleston, Norman Harper, 3412 S. Ewing
 Kerr, Edward L., 1143 Brunner
 Lewis, Sam B., Jr., 2508 Loving
 McDaniel, Walter S., 1631 McAdams
 McFayden, Robert W., 2607 Bowling Green
 McGill, Geo. C., 4131 Dunhaven Road
 McGrew, William E., 3906 Beechwood Lane
 Melun, Norman Clement, 1913 San Jacinto
 Russell, James A., 4616 Southern
 Sibeck, Gordon, 6446 Lupton Drive
 Smith, Stephen J., 8446 Santa Clara Drive
 Tatum, A. J., 4115 A Central Expressway
 Teipel, Albert, 1727 Ramsey Avenue
 Todd, John S., 122 South Shore
 Upshaw, Farrest, Jr., 509 Hoel Street
 Wassell, John W., 2305 San Marcus
 Wiley, James E., 3325 Hudnall

Associates (out of town)

Burch, Arthur Lee, 104 Professional Bldg., Tyler
 Miller, Mark Edwin, Jr., 1621 Fair Oaks Place,
 Irving

Associates (out of state)

Spillman, Pat Y., c/a American Express, Piazza
 di Spagna, Rome, Italy
 Wyatt, Ralph L., 3722 Piccadilly Road, Phoenix,
 Arizona

Jr. Associate Members—Dallas

Allen, William Burgess, 5830 Goodwin Avenue
 Bates, Samuel Sidney, Jr., 4533 Stigall
 Biar, Richard Theodore, 1913 San Jacinto
 Boerder, Eugene F., 3956 Lively Lane
 Conger, Thomas D., 4523 Capital
 Dainton, William W., 201 Thomas Building
 Davies, Robert E., 2817 Woodmere
 Edney, Edward P., Jr., 106 Paulus
 Ekblad, Robert Samuel, 3926 Beechwood Lane
 Epps, Jess, P. O. Box 3133
 Fletcher, Herman M., 2716 San Marcus
 Floyd, James W., 4302 W. Lovers Lane
 Fuytes, Louis S., 6443 Northwood Road
 Hall, LeRoy, 3503 Granada
 Heath, Jerry, 2703 Fitzhugh
 Hinman, Jack, 2726 Harlindale
 Hoops, Sherman L., 2825 Poinsettia Drive
 Jones, G. T., 3941 Hawthorne
 Lemmon, George R., 3211 Mockingbird Lane
 Long, O. E., 6918 San Mateo
 Marinick, Otto A., 7103 Shook
 Matthies, Harry Ernest, 508-D N. Ewing Avenue
 Mills, Geo. F., Rt. 1, Box 825
 Moss, Leland Mark, 6211 Lemmon
 Musgrave, Richard A., 3242 O'Bannon
 Phillips, Glen Harrison, 1913 San Jacinto

Rich, Joe Lynn, 5005 W. Lovers Lane
 Rowley, Lyle B., 6441 Gaston Avenue
 Russell, Billie Joe, 3326 Hudnall
 Rutherford, Gene Rankin, 3715 Durange
 Sentell, Gordon Douglass, 7625 Daingerfield
 Drive
 Smith, Joseph Earl, III, 3982 Beechwood Lane
 Smith, Stanley S., 7716 Greenway
 VonderHoya, Herbert Austin, 935 Lousanne
 Wallace, Richard Clyde, 3172 O'Bannon Drive
 Weisbecker, Burton F., 10312 Estacado Drive
 White, William E., 2047 N. Farola

Jr. Associate Members—(out of town)

Gordon, C. M., Box 833, Grapevine
 Jahn, Edward C., 100 Avenue C., Seagoville
 Miranda, R. V., 833 Valley View Drive, Grand
 Prairie
 Page, Francis Monroe, 318 Dawson Circle, Grand
 Prairie
 Smith, James Guston, Jr., 3908 Templeton,
 Greenville
 Warder, Marshall H., P. O. Box 1088, Grand
 Prairie

TSA Members—Dallas

Alexander, Robert E., Jr., 3704 Abrams Road
 Bulger, Clarence C., 4207 Abbott
 Greenfield, Lee R., 2116 N. Field
 Leinbach, J. L., 600½ E. Jefferson
 McClure, M. W., 3906 Lemmon
 Pitzinger, J. A., 1012 Southland Life Bldg.
 Reed, Wm. D., Jr., 220 Merc. Secur. Bldg.

TSA Members—(out of town)

Metcalfe, James E., Jr., 1107 W. Fifth Avenue,
 Corsicana

Members Emeritus—Dallas

Porter, I. D., 6910 Robin Road
 Swindle, D. D., 212 East Davis

EL PASO CHAPTER

Corporate Members—El Paso

Carroll, Edwin W., 1001 East Yandell Blvd.
 Crocker, Theodore, 1217 Prospect Avenue
 Daeuble, Louis, Jr., 2320 N. Virginia
 Garland, Robert D., Jr., 1001 E. Yandell Blvd.
 Higgins, Clarence, 1701 Carter Drive
 Hilles, David Ellsworth, Jr., Banner Building
 Licht, Richard H., 130 Buena Vista
 McGhee, Percy W., 1611 N. Campbell
 Monroe, James E., Jr., 1631 St. John Road
 Ring, John F., Banner Building
 Thorman, Otto H., 523 El Paso Nat'l Bank Bldg.
 Watershouse, C. E., 1304 Madeline Avenue
 Wuehrmann, William G., 310 N. Stanton Street

Corporate—(out of town)

Smith, Victor J., 906-E Avenue D, Alpine
Associate Members—El Paso
 Benner, A. V., Sr., 313 El Paso Nat'l Bank Bldg.
 Bynum, M. O., 116 Pasodale Road
 Dana, Howard, 1715 N. Stanton Street
 Dinsmoor, Wm. B., Jr., 7550 Adobe Road
 English, Hugh, 1501 Wainwright
 Foster, J. P., 3718 Savannah Street
 Lemke, Max, 503 Fewel Street
 Nesmith, Benjamin, 2430 Montana
 Stanley, Duffy, 2528 Cooper Street
 Thorpe, W. F., Jr., 1115 Montana
 Wingo, Lawden, Jr., 818 Peru Street
 Young, Carl J., 823 Chile

Jr. Associate Members—El Paso

Bryan, Stanley, Jr., 214 West Rio Grande
 Middleton, Sam T., Jr., 2110 N. Florence Street
 Rand, Pat, 1105 N. Virginia
 Schaefer, Hilpert, 713 N. Kansas Street
 Turner, Doris B., 5920 Tejas Road

Jr. Associate—(out of town)

Murga, Alberto, 2150 International, Juarez,
 Mexico



Aldine Senior High School, Aldine, Texas—H. J. Elsik, Superintendent
Architects: C. H. Kiefner and Eugene Werlin, Houston
Engineer: Raymond L. Jenkins, Houston

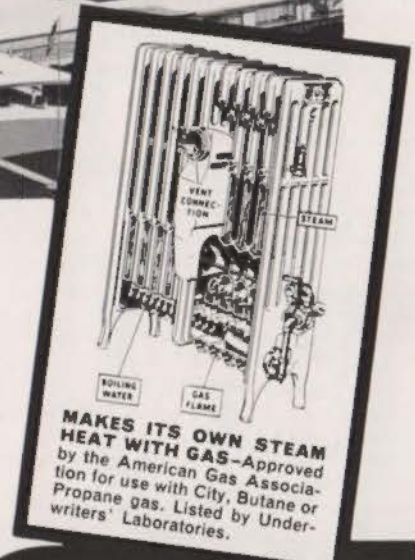
Another Repeat Specification for CLOW GASTEAM RADIATORS!

THIS NEW 47 CLASSROOM SCHOOL installed 116 Clow Gasteam radiators totaling 6107 sq. ft. of radiation this year. This was because Clow Gasteam radiators have demonstrated superior performance in the important considerations of safety, comfort, economy and durability in seven other

schools built by the Aldine Independent School District in the past two years.

Contact one of our Texas Distributors listed below, to see how your school can profit from a Clow Gasteam radiator installation.

Ask for list of satisfied school users in Texas.



TEXAS DISTRIBUTORS

JAMES B. CLOW & SONS

DALLAS 6—
5637 Daniels Ave.
Tel. EMerson 2896

HOUSTON 6—
2611 Colquitt Ave.
Tel. JACKson 3-8148

THE GAS-STEAM HEATING CO.

SAN ANTONIO 5—
102 Heiman St.
Tel. CAPitol 3-6123

JAMES B. CLOW & SONS

INC.

P. O. Box 6600-A • Chicago 80, Ill.

LAMBCO

- PAINTS
- VARNISHES
- LACQUERS
- WATERPROOFINGS

... can be specified with confidence
as to quality and performance



THE LAMBERT CORPORATION

HOUSTON, TEXAS



FACTORIES: HOUSTON, TEXAS • ORLANDO, FLORIDA

Representatives in Principal Cities

FORT WORTH CHAPTER

Corporate Members—Fort Worth

Armstrong, Charles E., Box 9246
 Black, Clifford H., 3421 Brady Avenue
 Boese, Olin, 3322 Bristol Road
 Bosworth, Harry I., 516 Neil P. Anderson Bldg.
 Buchanan, James C., Jr., 2945 Timberline Drive
 Cappelle, A. J., 212 Linderwood Avenue
 Clark, Clifton Gilbert, T&P Passenger Building
 Cox, Herman G., Neil P. Anderson Bldg.
 Crane, Hubert H., 3711 Camp Bowie Blvd.
 Digby-Roberts, F. W., 1205 Clover Lane
 Dunlap, Jay Teel, P. O. Box 9035
 Easterwood, Birch D., Neil P. Anderson Bldg.
 Epperly, Don, P. O. Box 9035
 Floore, John W., 1401 W. Lancaster
 Geren, Preston M., 1607 Ft. Worth Nat'l Bank Bldg.
 Geren, Preston M., Jr., 1607 Ft. Worth Nat'l Bank Bldg.
 Gernsbacher, Larry M., 3237 Sondra Drive
 Harden, T. E., Jr., 1607 Ft. Worth Nat'l Bank Bldg.
 Harrell, Pierrepoint, 2901 Princeton
 Hedrick, Wyatt C., P. O. Box 765
 Hueppelsheuser, Clyde R., 3208 Binyon
 Jelinek, Robert, 6304 Kenwick
 Jones, John W., 1708 Sunset Terrace
 King, Arthur George, 819 Penn Street
 Koeppel, Earl E., 1005, 1st Nat'l Bank Bldg.
 Lane, William R., 555 S. Lake Street
 Malin, Alfonso W., 3748 Hilltop Road
 McAdams, Albert C., 257 Majestic Building
 Moore, Dick Clark, 2570 Highview Terrace
 Parker, Morris B., 3512 Western
 Patrick, G. T., 301 Jack Danziger bldg.
 Patterson, Joseph J., P. O. Box 9035
 Pelich, Joseph R., 1103 Com. St. Bldg.
 Sawden, George Swiler, Box 9035
 Stanley, Thomas Edward II, P. O. Box 763
 Stuart, Lee, Jr., 701 Flatiron Bldg.
 Tomlinson, DeWitt F., 3729 Cresthaven Terrace
 Vowell, Jim D., 1612 Electric Bldg.
 Ward, Roger L., 3803 Wendan Drive
 White, Warren G., 701 Flatiron Building
 Whitworth, Jack C., 803 T&P Building
 Wilson, Edward L., P. O. Box 9035
 Wolfe, Howard C., Box 9035
 Waltz, Robert P., Jr., 1030 7th Avenue
 Woodruff, Clyde H., 3859 Medford Road

Corporate Members—(out of town)

Arnhold, Roy C., 1406 Grant Street, Wichita Falls
 Cacke, John W., 1507 Franklin, Waco
 Dixon, Jesse G., P. O. Box 1799, Wichita Falls
 Easterwood, K. V., 513 Serv. Mut. Bldg., Waco
 Harris, Glynn L., 171D Dayton Street, Wichita Falls
 Johnson, Clifford H., 6068 Chef Menteur Highway, New Orleans, La.
 Neel, W. Morris, 1502 Grace Street, Arlington
 Padgett, Sidney T., 123-125 West Main Street, Arlington
 Pardue, R. B., Jr., 3107 Garfield, Wichita Falls
 Pond, Paul J., Jr., 2104 Avenue F, Wichita Falls
 Quinn, William Murray, 1741 Grace, Arlington
 Roberts, Harris Hill, 1100 Medical Arts Bldg., Waco
 Sanders, Roy Dean, Jr., 400 Sanders, Bowie
 Shupee, George W., 711 Abram, Arlington
 Turner, John D., 803 Bluff Street, Wichita Falls
 Witt, James D., 514 Amicable Bldg., Waco

Associate Members—Fort Worth

Alford, Don, 407 Morningside Drive
 Bailey, Donald Guy, 4040 Merida

Buzard, Richard, 3429 Medina
 Chambers, Robert, 2521 Wabash
 Croston, M. E., Jr., 912 Scenic Drive
 Davidson, E. Don, 3110 Wingate
 Hamm, T. Z., II, 3305 Creston Avenue
 Hollis, Chester, 3328 W. 7th Street
 Jeanes, Ben H., 2869 Hunter Street
 Johnson, Charles R., 4728 El Campo, Apt. 10
 Jones, R. Charlton, Jr., 2720 Timberline Drive
 Kelley, Charles H., 4036 Sandage
 Kneer, William C., Jr., 4084 Merida
 Pfeffer, Charles J., 209 Majestic Building
 Putty, Paul, Jr., 2612 West Drew
 Riley, William C., Jr., 257 Majestic Bldg.
 Schults, Jack A., 3711 Camp Bowie Blvd.
 Scudiero, Joseph S., 4067 W. 7th Street

Associates—(out of town)

Price, Homer L., Jr., 1306 Buckanier Drive, Abilene
 Thomas, Raymond F., Grayson County State Bank, Sherman

Jr. Associate—Fort Worth

Johnson, J. R., Jr., P. O. Box 9035

TSA Members—Fort Worth

Bigley, C. L., 328 Lipscomb
 Bliss, Adam A., Dan Waggoner Bldg.

HOUSTON CHAPTER

Corporate Members—Houston

Alexander, W. W., 2008 W. Alabama
 Anderson, Ralph A., Jr., P. O. Box 6216
 Andrews, Lavone D., Mrs., 2017 W. Gray
 Austin, Burton L., 2401 La Branch
 Baer, David C., 1200 Bissonnet
 Barnstone, Howard, 811 Lovett
 Barthelme, Donald, 3106 Brazos
 Belsher, Horace E., 1529 Maryland Ave.
 Bennett, George S., 420 E. Cowan Street
 Biering, Robert, 3023 Winslow
 Bishop, James A., 7519 Azalea Street
 Badet, Edward, 3415 Montrase
 Bolton, Preston, 811 Lovett
 Borget, Lloyd, 4519 W. Alabama
 Brogniez, Raymond H., 2126 W. Alabama
 Brown, Hamilton H., 2017 W. Gray
 Bryan, Frank W., 2027 Huldy Street
 Buffington, Ralph M., 1911 S. Shepherd
 Bush, F. Woodrow, 827 Ridge Street
 Butler, John Rogers, 616 Fannin
 Caldwell, W. C., 4219 Yoakum
 Calhoun, Harold E., 2506 Richton
 Cato, Claude R., 2401 La Branch
 Chan, Charles Soon, 112 Pecore
 Chase, Charles S., Jr., 2317 Bissonet
 Chillman, James, Jr., Rice Institute, P. O. Box 1892
 Clemens, Robert W., 4110 Dennis
 Cowell, C. Herbert, Suite 407, Old Nat. Bldg., 5619 Fannin St.
 Crain, Bluford W., Jr., P. O. Box 6216
 DeZurko, Edward R., Rice Institute
 Dill, Frank C., 2506 Richton
 Dixon, Sam B., P. O. Box 20091
 Douty, Truman B., 7335 Dixie Drive
 Dunaway, James K., 2706 Richmond
 Dunlap, Cecil Norman, 3610 Rice Blvd.
 Duryea, William K., 1917 Westheimer
 Eichelberger, Dean A., No. 2 Chelsea Place
 Elkins, E. H., 1917 Westheimer
 Elliott, Card G., Jr., 4511 Kyle
 Elliott, Justin McCord, 2814 Virginia Street
 Elliott, Paul H., 802 West Main Street
 Engberg, Arne, 2130 Welch
 Evans, Jack W., 2401 La Branch
 Fairchild, Cameron D., 2626 Westheimer
 Fasullo, George, 802 Pearson
 Finn, Alfred C., 1005 Bankers Mortgage Bldg.
 Finn, Alfred C., Jr., 1005 Bankers Mortgage Bldg.
 Frankfurt, Henry D., 337 Knipp Road
 Franzheim, Kenneth, 802 Lovett Blvd.
 Gabert, Lenard, 1315 Bell Avenue
 Gaffney, Edward K., 4132 Coleridge
 Gainey, John V., 2611 Crocker Street
 Gaskill, Clifton R., Jr., 1202 Dennis
 Gilbert, Earl R., 6026 Rose Avenue
 Glover, Louis A., 3116 Austin
 Goehring, Lloyd A., 1917 Westheimer
 Goleman, Albert S., 5100 Travis
 Gragg, Hugh E., 707 Hawthorne Street
 Greacen, Thomas E., II, 1010 Winbern
 Green, Wilbur E., 1123 Welch
 Greenwood, Ben F., P. O. Box 20091
 Guinn, Fred Wilson, 5309 Navarro Street
 Heath, Herbert C., 2314 Dunstan
 Heidebreder, George A., 3606 Grammercy
 Hoffman, Henry S., 443 Hollow Drive
 Horton, Harold B., 4739 Marietta Lane
 Hawze, Albert H., 2814 Virginia
 Hoyt, Richard C., 5519 Memorial Drive
 Hutchison, Joseph B., P. O. Box 752
 Irvine, Robert A., 5519 Memorial Drive
 Jackson, R. Graham, 2506 Richton
 James, Delwin V., 3008 Caroline
 Jenkins, Raymond L., 2622 Richmond
 Johnson, C. A., 3501 Buffalo Drive
 Johnston, F. Perry, 3908 Main Street
 Jones, William P., 2706 Richmond
 Jasserand, Louis P., 3710 Mt. Vernon
 Kamrath, Karl F., 2713 Ferndale
 Keller, Theo. F., 931 M&M Bldg.
 Kiefner, Charles H., 3501 Buffalo Drive
 Klein, Irving R., 1317 Austin Street
 Knostman, Jack W., 2017 West Gray
 Koetter, Gunter W., 1103 S. Shepherd
 Krokower, Joseph, 505 Avondale
 Leible, Roy W., 3702 Alameda Road
 Lent, Robert F., c/o Rice Institute, P. O. Box 1892
 Lenzen, William R., 708 Merrill Street
 Lewis, Frederick A., 1005 Bankers Mtg. Bldg.
 Lightfoot, Tommy Ewart, Sr., 1706 Huldy Street
 Lindsley, C. H., 5210 Morningside Drive
 Lloyd, Herman F., 4605 Montrase
 MacKie, F. J., Jr., 2713 Ferndale
 Maddox, H. E., Jr., 3501 Buffalo Drive
 Manning, Ernest Vincent, 6615 Narcissus Street
 Marshall, Charles B., 2008 W. Alabama
 Martin, Milton Foy, 1811 Crawford
 Matkin, George H., 4101 San Jacinto
 Mattingly, Edward, 5002 Caroline Street
 Maurice, Robert W., 1314 Richmond, No. 1
 Maze, Richard R., 5125 Elm
 McCleary, Thompson H., 2017 West Gray
 McDougal, Marshall, 5247 Buffalo Speedway
 McGinty, B. B., 2425 Ralph
 McGinty, Milton B., 2425 Ralph
 McMaha, Thomas George, 3501 Buffalo Drive
 McKim, C. M., Jr., 1615 Blodgett
 Moore, Harvin C., 2006 W. Alabama
 Moore, Theron L., 3412 Yupon
 Morehead, James C., Jr., 354 Piney Point
 Morgan, William B., 4605 Montrase Blvd.
 Morris, Seth I., Jr., P. O. Box 6216
 Mulvey, Carl Albert, 128 Sul Ross
 Neuhaus, Hugo V., Jr., Suite 407, Old Nat. Bldg., 5619 Fannin St.
 Neuhaus, J. V., III, 1728 Bissonnet
 Northrop, J. W., Jr., 3940 Main Street
 Northrop, Page H., 3940 Main Street
 Nunn, Stayton A., 3272 Westheimer
 Nutter, Arthur E., 608 Preston



What a Package!



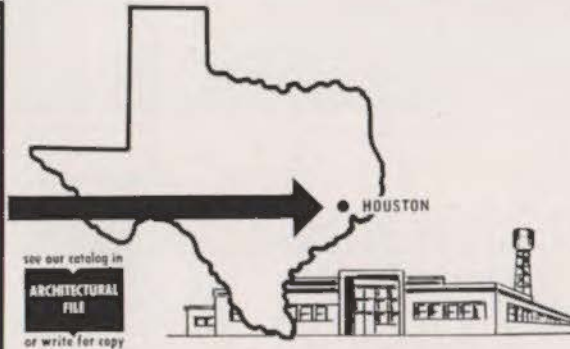
Now! All Your Floor Covering Needs Under One Roof and Made in Texas!

MATICO

- Asphalt Tile
- Parquetry
- Confetti
- Maticork
- Aristoflex
- Cork Tile
- Dramatile
- Rubber Tile
- Vinyl Tile
- On-Top Base
- Plastic Wall Tile

WRIGHT

- Rubber Tile
- Vinyl Tile
- On-Top Base



see our catalog in
ARCHITECTURAL FILE
or write for copy

MASTIC TILE CORPORATION OF AMERICA (WRIGHT MANUFACTURING CO. DIVISION)

5200 SO. POST OAK ROAD, HOUSTON, TEXAS

Also: Newburgh, N. Y. • Joliet, Ill. • Long Beach, Calif.

Send for Free Samples and Literature

Order CLAY TILE for beauty that lasts

ARCHITECTS specify genuine clay tile for commercial and residential floors and walls where ruggedness or beauty is important.

CONTRACTORS prefer dry-press clay tile because its precision assures exact setting—quicker, easier installation.

CLIENTS approve of beautiful clay tile walls and floors because—whatever the installation—they are proven time and money savers.

Only dry-press clay tile meets so many requirements of architect, contractor, and client. Clay tile lasts, no matter how heavy the wear. Its natural beauty blends in with every type of design.

Moreover, you cut time and cost in installation when you use dry-press clay tile. The exact setting made possible by this precision-formed tile speeds up every job—saves you as much as 10% to 15% on each installation.

Clients like the way clay tiling keeps right on saving money. Acid-resistant, fireproof, rot-proof and vermin-proof, it survives the roughest use, yet requires no maintenance.

Texeramics Flint Quarry Tiles, manufactured by the dry-press method, surpass government specifications. Available in standard sizes (3 $\frac{3}{4}$ " x 8" x $\frac{1}{2}$ " and 6" x 6" x $\frac{1}{2}$ ") with a complete line of trim. Three natural colors: Red Chief (red), Desert Sand (buff) and Fire Flash. Write for samples and information.



TEXERAMICS INC.

P. O. BOX 274

PHONE 1820

MINERAL WELLS, TEXAS

INDEX TO ADVERTISERS

Academy Rubber Co.	26
Butler Advertising Co.	
American Brass Co.	30
American Desk Mfg. Co.	16
Syers-Pickle & Winn	
American-Standard	7
Anderson, H. G. & Associates	40
Binswanger & Co.	24
McKee-Thompson & Associates	
Black-Brollier	19
Aylin Advertising Agency	
Cameron, Wm. & Co. (Ideal)	36
Richard C. Bush Advertising Agency	
Catlett Engineers, Inc.	33
Chrysler Airtemp Corp.	4
Clay Products Ass'n. of the Southwest	2
DGB Advertising Agency	
Clow, Jas. B. & Sons	38
Henry M. Hempstead Co.	
Dezendorf Marble Co.	28
Elgin-Butler Brick Co.	42
Finger Furniture Contract	36
Kamin Advertising Agency	
Folmar, R. H. Co.	42
Great Southern Supply Co.	21
Henderson Clay Products	8
Josam State Plumbing	28
Allied Advertising Agency	
Lambert Corp.	38
Julian A. Kirk Advertising	
Lucke, Wm. B., Inc.	26
Monarch Tile Mfg. Co., Inc.	15
Rheem Mfg. Co.	Cover II
Aylin Advertising Agency	
Royal Tile Mfg. Co.	18
Southern Inspection Service	40
Suniland Furniture Co.	44
Texas Bitulithic Co.	24
R. J. Burke Advertising, Inc.	
Texas Bureau for Lathing & Plastering	20
Lee A. Gilman & Associates	
Texas Quarries, Inc.	Cover III
Rogers & Smith Advertising	
Texeramics Inc.	40
Riffenhouse & Co.	
Trinity White Division	34
Harris & Bond, Inc.	
United Machine Co.	1
Rowland Broiles Co.	
Uvalde Rock Asphalt Co.	Cover IV
Rogers & Smith Advertising	
Wright Mfg. Co.	40
Brennan Advertising Agency	
Zurn Continental Services	32

PROFESSIONAL DIRECTORY

SOUTHERN INSPECTION SERVICE ENGINEERS INSPECTION & TESTS

P. O. Box
8633

3206 Houston
Ave.

P. D. Barnard
Mgr.



VA-6621

Houston, Texas

H. G. ANDERSON & ASSOCIATES

"QUANTITY SURVEYS"
PRELIMINARY ESTIMATES

803 THOMAS BLDG. P.O. BOX 9814
RANDOLPH 3711 DALLAS, TEXAS

Palmer, G. A., Jr., 5113 Aspen
 Payne, Harry D., 3908 S. Main Street
 Phenix, Vance D., 2425 Ralph
 Pierce, Abel B., Jr., 2200 Welch
 Pierce, Geo. F., Jr., 2200 Welch
 Potter, Edward P., 4215 Graustark
 Rather, John T., Jr., 2814 Virginia
 Red, David D., P. O. Box 6721
 Reed, Mack G., 2115 Norfolk
 Reichert, Edward L., 1917 Westheimer
 Reynolds, Joseph B., 2518 Times
 Rodgers, Tom K., 2713 Ferndale
 Rolfe, Walter T., 5100 Travis
 Ruslay, Geo. Warren, 1811 Crawford
 Salisbury, H. A., 3501 Buffalo Drive
 Schroeder, Edwin A., 1202 Dennis
 Shult, Ernest L., 5009 Fannin Street
 Sjalin, Gasta, 3616 Greenbriar
 Skislewicz, Anton, 1910 Wyndale
 Smallwood, Robert C., 3220 Louisiana
 Smart, George H., 811 Lovett
 Smith, Oliver H., Jr., Suite 204, 4000 Westheimer

Staub, John F., 2814 Virginia
 Stube, Henry Aom, 3008 Caroline
 Sullivan, Charles, 3901 Travis
 Sullivan, Maurice J., 3901 Travis
 Swanson, James T., Jr., 1737 Sunset Blvd., Apt. 16

Swenson, Bailey A., 3106 Brazos Street
 Tabar, John Rodney, 1200 Bissonnet
 Talley, Robert W., 2518 Times Boulevard
 Taylor, Harold W., 1202 Dennis
 Taylor, Harwood, 1953 Richmond
 Tharp, Benjamin C., 1103 So. Shepherd
 Tillinghast, Josh, 2023 S. Shepherd
 Tungate, Mace, Jr., 2506 Richton
 Turner, Harry A., 2502 Robinhood
 Vale, Wylie W., 517 West Gray
 Voelcker, Herbert R., 1202 Dennis
 Webster, James F., Jr., 2017 West Gray
 Werlin, Eugene, 3920 Willowick Drive
 White, Emory S., M&M Building
 Williams, Allen R., 5110 S. Shepherd
 Wilson, F. Talbot, P. O. Box 6216
 Winslett, Herschel R., 411 Blalock Road
 Wirtz, L. M., 2506 Richton
 Wisdom, William J., 1315 Bell
 Woestemeyer, Otto F., 11400 Memorial Drive
 Woodruff, Lewis J., 910 Branard
 Wooters, L. B., 2702 Richmond
 Young, Baldwin N., 4000 Westheimer
 Zander, Ralph A., 2914 Virginia

Houston Corporates—(out of town)

Cannon, Vard E., Box 85, Trinity
 Cates, Melvin J., P. O. Box 241, Tyler
 Demopolous, Dimitri, 917 North Market, Baytown
 Fensch, Reinhold P., 5312 Glenmont Drive, P. O. Box 272, Bellaire
 Gregory, Carl A., P. O. Box 241, Tyler
 Jones, Ray W., 5402 Holly, Bellaire
 Keeper, David M., 5419 Valeria, Bellaire
 Kent, Charles W., 404 Perry Bldg., Lufkin
 Lammers, Lowell, P. O. Box 3220, Baytown
 Middlekauf, C. B., 5121 Valeria, Bellaire
 Pate, Charles J., 202½ W. Erwin, Tyler
 Perkins, Daniel, 306 Burnet Drive, Baytown
 Price, Thomas M., 2516 Ave. O½, Galveston
 Rapp, R. R., 417 Stewart Building, Galveston
 Reber, Jack M., 917 N. Market Street, Baytown
 Rick, Robert G., 604 E. Goodwin, Victoria
 Sprohge, Paul Richard, 104 Bellaire Court, Bellaire
 Stuarmer, Adolph D., 1020 N. Jefferson, San Angelo
 Symonds, Walter S., Jr., 5610 Whitehaven Street, Bellaire
 Youens, Ernest L., 5418 Braeburn, Bellaire

Associate Members—Houston

Beadle, Frank F., Jr., 3833 Tennyson
 Broadnax, A. C., 1828 Arbor
 Cannata, Anthony C., 1308 Ridgeley Drive
 Christiansen, Donald E., 2120 Post Oak Road
 Davis, Hal Muncaster, 5329 Fayette
 Deane, Walter, 6614 Saxet Avenue
 Du Bose, Jean, 1537 Marshall
 Dvorak, Helen Ann, 6125 Washington
 Garrison, John F., Jr., 2910 Westheimer—Apt. 3
 Gillfillan, Freda Jane, 4333 Clay
 Green, C. Marley, 5002 Caroline
 James, Allan K., 3215 Oakmont
 Jones, Betty Jo Lackey, 3908 South Main
 Kerner, Charles H., 11 Waverly Ct.
 King, Robert L., 1310-C Hawthorne
 Katch, Marion A., 620 Branard
 Lake, William, 3940 Main Street
 Langwith, John Edmund, Jr., 1302 Hawthorne
 Larson, John Haydn, 2115 Norfolk
 Leifeste, A. A., Jr., 403 Blalock
 Lillioff, Richard W., Jr., 6 South Wynden
 Maguire, Lewis S., Box 2175
 Mayo, Edward B., 1511 California
 Nunn, Stayton, Jr., 3272 Westheimer
 Ridgeway, Ann, 1724 Maryland Avenue
 Robinson, Thomas A., 535 West 32nd
 Simmons, R. Bruce, 5931 Belfort
 Ulbricht, Herbert H., 3272 Westheimer
 Walton, Richard B., 2403 Branard
 Whitehead, Thomas P., 811 Lovett
 Wortham, William F., Jr., 1503 Jefferson

Associate Members—(out of town)

Anderson, Alvin W., 2567 Galia, San Antonio
 Doughtie, Symond E., 5007 Imperial, Bellaire

Jr. Associate—Houston

Bell, Jacque F., 1119 Bay Oaks Road
 Bowles, R. W., Mr., 5211 Lyndhurst
 Bowles, R. W., Mrs., 5211 Lyndhurst
 Brailas, Alexander, 923 Laper
 Cooper, James Barrett, 1647 Cortlandt
 Denny, Clifton E., Jr., 1533 Caywood
 Diniz, Darcy P., 2719 Kipling, Apt. C.
 Dunn, Joseph G., 12734 Berthea Lane
 Dykes, A. O., 5419 Ashley
 Flanagan, Robert Y., 3422 Burgundy Lane
 Goodrum, James Robert, 5202 Westchester, Apt. 1
 Hughes, James Michael, 6446 Sewanee
 Kelling, Herman, 3373 Westheimer
 Kirk, Robert D., Jr., 3756 Ingold
 Madrall, A. William, 5100 Travis
 Marales, Richard V., 2537 Caywood
 Munroe, W. A., 2316 Hazard
 Potts, Robbie Lyle, 174 Reinecke
 Redman, Mrs. Elaine M., 2301 Norfolk, Apt. 3
 Rempelakis, Emmanuel, 5122 Libbey Lane
 Weaver, Thomas Martin, 500 Branard
 Wilson, R. H., Jr., 4311 Baltis Drive, Apt. A

Jr. Associate Members—(out of town)

Bigbee, William Lynn, 4605 Evergreen, Bellaire
 Brude, Adolph Gustav, 4905 Cedar, Bellaire
 Crow, Donald H., 4606 Holt, Bellaire
 Cummings, Ira K., 512 Avenue C., La Marque
 Galloway, Mrs. H. R., 846 W. Jaquet, Bellaire
 Gillotte, Ray W., 4618 Park Court, Bellaire
 Lancer, Robert W., 5117 Chestnut, Bellaire
 Riggs, Hal Don, 5416 Braeburn Drive, Bellaire
 Virtue, Ralph T., 546 Lupin, Bellaire
 Wagner, William G., 726 Inwood Drive, Bryan
 Welch, Franklin Dee, 6225 Carew, Bellaire

TSA Members—Houston

Buse, Russell Hardy, 2023 Marshall
 Dehnert, J. W., 3815 Garrott Street
 Ross, E. M., 2148 Addison

TSA Members—(out of town)

Slaughter, S. R., 1903 Bay Street, Texas City
 Weaver, Harry E., Box 1601, San Angelo

Member Emeritus

Briscoe, Birdsall, 3901 Travis, Houston

LOWER RIO GRANDE VALLEY CHAPTER

Corporate Members

Baxter, William C., Pioneer Bldg., Westaco
 Bowman, Walter Clarkson, 1220 W. Harrison St., Harlingen
 Byers, Edwin W., 901 N. 8th, McAllen
 Ellis, C. Lyman, Jr., 305 E. Jackson, Harlingen
 Rike, Zeb William, 208 S. Main, McAllen
 Suter, Warren C., 605 W. 22nd Street, Mission, Box 255
 Woolridge, A. H., P. O. Box 1468, Brownsville
 York, John G., 1220 W. Harrison, Harlingen

Associate Members

Holmes, Brad, 308 S. Main, McAllen

Member Emeritus

Ellis, C. Lyman, Sr., 305 E. Jackson, Harlingen

TEXAS PANHANDLE CHAPTER

Corporate Members—Amarillo

Bliss, Edward N., P. O. Box 1524
 Boren, Thomas M., 1707 W. 8th
 Carder, Macon, Fisk Bldg.
 Carlander, Guy A., P. O. Box 3158
 Ensign, M. Howard, 3408 Hughes
 Fowler, W. Henry, Box 3026
 Hannon, John Louis, 1115 Broadmoor
 Hucker, Robert E., 41 Johnson Bldg.
 Jura, Edmond Jurksas, 717 W. 16th Avenue
 Kaufman, W. R., Jr., 517 W. 10th
 Rittenberry, James, Fisk Bldg.
 Shiver, Clayton B., 1011 Fisk Bldg.
 Short, George Washington, 1707 8th Avenue
 Smith, J. Ray, 108 E. 10th Avenue
 Townes, William C., 1208 West 10th Avenue
 Ward, John S., 721 West 7th Street

Corporate Members—Lubbock

Atcheson, James E., 204 Sanford Bldg.
 Atkinson, Atmar L., 3201 29th
 Barrick, Nolan E., c/a Texas Tech. College
 Bradshaw, Weldon Leroy, 2514 20th Street
 Brasher, Herbert, 406 Avenue M
 De Witt, Talmage, 1203 College Avenue
 Dryer, Hugh Clemens, 1908 Avenue M
 Duran, Richard, 3718 32nd
 Haynes, S. B., 1902 Dixie Drive
 Kirby, Laverne H., 1902 Dixie Drive
 Kimmel, Rabb Turner, Box 472
 Kleinschmidt, Florian A., Texas Tech. College
 Lockard, Robert Ivan, Dept. of Ach., Texas Tech. College
 Rihard, Herman B., Box 5342
 Spencer, Ralph Donald, 4627 Detroit
 Walker, O. R., Box 948

Corporate Members—others

Cantrell, B. Royal, Pampa
 Kerr, John C., Box 471, Plainview
 Puckett, O. L., 505 Petroleum Bldg., Big Spring

Associate Members

Cantrell, B. Warren, 6110 Avenue R., Lubbock
 Goyette, Robert L., 307 Ave. V, Lubbock
 Mergert, Russell A., 4002 Gables, Amarillo
 Messersmith, Robert C., 6101 Ave. R, Lubbock

In this the 82nd year of continuous operation it is with pleasure that we join in welcoming the

ARCHITECTS OF TEXAS to HOUSTON

Nov. 1 thru 4, 1955

Architects, their wives and guests are cordially invited to visit us at our Hospitality Room in the Shamrock.

ELGIN-BUTLER BRICK COMPANY

Butler Brick since '73

HOUSTON
BATON ROUGE

AUSTIN
SAN ANTONIO

DALLAS
CORPUS CHRISTI

OTHER PRINCIPAL CITIES

SWINGING DOORS • SLIDING PANELS • CASEMENT WINDOWS • PROJECTED WINDOWS

... as illustrated in *Sweet's*

Aluminum

ALUMAR

REG. U.S. PAT. OFF.

Products

R. H. FOLMAR COMPANY MANUFACTURERS AUSTIN, TEXAS

Parge, Earl W., 1919 Cherry, Amarillo
Pierce, Henri Deane, 1618 Ave. Y, Lubbock
Vaughan, Arthur E., 1705 East 26th, Lubbock

TSA Members

Butler, Milton C., 406 Avenue M, Lubbock
Kerr, Lawrence A., 1801-D Washinton Street,
Amarillo
Svenson, Carl L., 1509 Avenue K, Lubbock

SAN ANTONIO CHAPTER

Corporate Members—San Antonio

Adams, Carleton W., 500 Hutchins
Ayres, Atlee B., 3002 Transit Tower
Ayres, Robert M., 3002 Transit Tower
Bloomfield, Charles, 1501 Majestic Bldg.
Boelhauwe, Chas. T., 803 River Road
Buenz, J. Fred, 1517 Majestic Bldg.
Cameron, Ralph H., 1519 Transit Tower
Carrington, Philip S., 1910 San Pedro
Cocke, Bartlett, 3501 Broadway
Deweese, Dahl, P. O. Box 8127
Dielmann, Leo M. J., 300 E. Market Street
Dielmann, Leo M. J., Jr., 300 E. Market Street
Eichenraht, Marvin, 702 Maverick Bldg.
Finney, C. J., 209 San Pedro
Ford, O'Neil, 228 E. Martin
Freeborn, Elmer L., 4600 Broadway
Harris, Bernard P., 1631 Highland Blvd.
Hays, Ernest B., 406 E. Huisache Avenue
Hein, J. Harris, 216 West Craig Place
Hesson, Paul Anthony, 227 Saratoga Drive
Hugman, Robert H. H., 107½ W. Commerce
Street
Huie, Charles, Jr., 918 Manor Drive
Johnson, Bruce B., 918 Manor Drive
Julian, Alvin Joseph, 2901 Transit Tower
Kellner, Herbert F., 406 Austin Highway
Lagan, Mrs. Mariam F., 459 University
Lord, Sidney C., Jr., 4600 Broadway
Marmon, Harvey V., Jr., 109 Beverly Mae
Mathis, Arthur, Jr., 804 Amer. Hosp. & Life Bldg.
May, Allan Frank, 734 Sumner Drive
Nicholson, H. E., 801 John Page
Perry, A. B., 551 Queen Anne
Phelps, Raymond, P. O. Box 8127
Phelps, Raymond, Jr., P. O. Box 8127
Pitts, DeHaven, 4600 Broadway
Rinard, Clarence, 2015 Alamo Nat'l Bldg.
Roberts, Reginald H., 2600 McCullough Avenue
Rogers, Gerald R., 2002 N. St. Mary's Street
Rose, Paul P., 400 Labor Street
Ross, Cerf, 111 Auditorium Circle
Ryan, Milton A., 601 Elizabeth Avenue
Schultze, Richard, 115 El Prado Drive West
Sellinger, Gerald M., 133 Parland Place
Shoop, Phillip L., 122 W. Olmos Drive
Simmons, C. C., P. O. Box 8127
Simons, Malcomb G., 521 Aztec Bldg.
Smith, Gordon M., 255 Primera Drive
Smith, Harvey P., 117 El Prado Drive West
Spillman, B. W., Sr., 10-11 Chandler Bldg.
Steinbomer, Henry, 907 Travis Bldg.
Thomas, Wallace B., 7007 San Pedro, Rt. 10,
Box 47
Thompson, Thomas B., 804 Amer. Hosp. & Life
Bldg.
Valdez, Frank M., 924 Dallas
Vander Straten, Richard, Box 6643, Alamo Hills,
Station
Walker, John R., Jr., 1918 San Pedro
Walther, Henry Robt., 102 Hefflin Ct.
White, Dan N., 2901 Transit Tower
Wilder, John W., 224 W. Park Avenue
Williams, Joe Leon, 918 Manor Drive
Wilson, Glenn C., Majestic Bldg.

Wyatt, Benjamin K., 401 Navarro
Zisman, Samuel B., 528 King William Street

Corporate Members—(out of town)

Klopper, Kermit K., 181 Main Plaza, New
Braunfels
Krause, Rudolph M., P. O. Box 367, Fredericks-
burg
Mickelsen, William F., Box 102, Kerville
Schmidt, Jeremiah, 206 Schmidt Bldg., New
Braunfels
Waters, R. Newell, First National Bank Bldg.,
Westlaco

Corporate Members—(out of state)

Engelking, Robt. S., Apartado 1588, Emilio
Costelas 212, Mexico D. F.
Harber, Wm. V., Ordnance Ammunition Com-
mand, Joliet, Illinois

Associate Members—San Antonio

Baum, Louis Frederick, Jr., 209 San Pedro Ave.
Dennis, W. Edwin, 618 S. Park Blvd.
Eiserloh, Harold Lee, 145 Dalehurst Drive
Geron, Harry R., 123 W. Park Avenue
Grobe, William C., 2901 Transit Tower
Jersig, John E., 1501 Majestic Building
Jones, William D., 812 Transit Tower
Lansing, Douglas M., 1501 Majestic Building
Noonan, Thomas A., 803 Amer. Life & Hosp.
Building
Pounders, W. R., Jr., 603 W. Huisache
Rankin, James R., 1919½ Cincinnati
Ransleben, Otto E., 504 Travis Building
Redondo, Edwin F., 447 University
Reynolds, Russell R., 834 Clover Street
Smith, Harvey P., Jr., 117 El Prado Drive West
Volmer, Robert, 3010 W. Ashby Place
Williams, David E., Jr., 435 Sumner Avenue
Williams, J. Clyde, Bedell Bldg.

Jr. Associate—San Antonio

Aiken, Howard A., 213 Ogden Street
Brown, Anderson W., 322 Springwood Lane
Cowan, R. W., 222 Cherry Ridge
Frischmuth, Edward L., 331 Normandy
Garcia, Paul, 309 University
Garza, Gilbert, 162 Continental Avenue
Gandeck, Edw. R., 1807 W. Craig Place
Helmke, Vernon L., 1101 Montrose Blvd.
Howell, M. Roy, 326 Springwood Lane
Markovsky, Robert E., 127 Frances Jean Drive
Prossell, Victor, Jr., 116 Cardinal Avenue
Simpson, Ralph, 280 Retama Place
Tellez, Andrew B., 602 N. Saxon Drive
Tarres, Ignacio L., Jr., 2306 Waverly Avenue
Vargas, Tom, 2006 Hays Street
Whiteaker, James E., 355 Terra Alta
Williams, Joe Carroll, Jr., 144 Argyle Street

Jr. Associate—(out of state)

Wilson, 1st Lt. Robert W., Jr., 300 S. Goodwin
Street, Apt. 315, Urbana, Illinois

Members Emeritus—San Antonio

Marriott, John M., 905 Frost National Bank Bldg.
Silber, Paul, 1919 Cincinnati
Willis, George, 2303 Transit Tower

SOUTHEAST TEXAS CHAPTER

Bultrill, Lee R., 203 Bowie Bldg., Beaumont
Goleman, Harry W., 3795 Long, Beaumont
Heartfield, R. C., Am. Nat'l. Bank Bldg.,
Beaumont
Ingram, George L., 690 Hazel, Beaumont
Irby, Benjamin E., 2288 Victoria, Beaumont

Livesay, Tom Bryan, 820 North 11th Street,
Beaumont

Livesay, Wallace Bright, Sr., 820 North 11th
Street, Beaumont

Marak, Kenneth J., 203 Bowie Bldg., Beaumont

Mebane, Mike, 1872 Calder, Beaumont

Neff, John Earle, P. O. Box 1105, Port Arthur

Pitts, Llewellyn Wm., 1872 Calder, Beaumont

Ransom, King R., 2633 5th Street, Port Arthur

Steinman, Douglas E., Sr., 209 Kyle Bldg.,
Beaumont

Steinman, Douglas E., Jr., 209 Kyle Bldg.,
Beaumont

Stone, Fred C., 1872 Calder, Beaumont

Vidrine, Lawrence, Box 1187, Port Arthur

Walmer, Maurice E., 308 Gilbert Bldg., Beau-
mont

Woodside, Harry R., 419 Am. Nat'l. Bank Bldg.,
Beaumont

Associate Members

French, Richard, Kyle Building, Beaumont

Moore, Lee, 1116 Lake View, Port Arthur

Te Vault, De Wayne, Vidar, Beaumont

Waller, Darcy, 525 25th, Beaumont

Jr. Associate Members

Murphy, Cliff E., Jr., 690 Hazel, Beaumont

Thompson, Charles, 690 Hazel, Beaumont

Trevino, A. J., 690 Hazel, Beaumont

WEST TEXAS CHAPTER

Corporate Members

Avery, Henry C., Jr., P. O. Drawer 952, Midland
Black, Joseph J., 801 West Kansas Avenue,
Midland
Brown, Woodlief F., 217 Mims Bldgs., Abilene
Castle, David S., 1082½ N. 1st., Abilene
Cliff, William Henry, 1900 Kermit Highway,
Odessa
Collier, Wm. M., 212 Morris Blvd., Abilene
Dona, Royal, 608 Central Nat'l. Bank Bldg.,
San Angelo
Grass, F. Delmar, 517 N. Whitaker, Odessa
Jones, Wendell Lynn, 717 Jefferson, Abilene
Lindberg, Paul T., 161½ Cedar, Abilene
Lovett, Max Dowell, 108 S. Jefferson, San
Angelo
Luther, John Joseph, 3942 Whittier, Abilene
McCutchan, Gordon C., 603 West Texas Street,
Midland
Maddux, D. C., 1004 S. Oaks Street, San
Angelo
Mauldin, Leonard Robert, Talley Building, 212
Phillips, San Angelo
Norris, Walter L., P. O. Box 1102, Midland
Olds, F. C., 856 Highland, Abilene
Pace, Homer Eugene, Jr., 603 West 8exas,
Midland
Pierce, Joe Bill, 301 South Weatherford,
Midland
Tittle, James Donald, 2041 North Third Street,
Abilene
Tucker, Henry Lee, 155 Cedar, Abilene
Wilkinson, Robt Merritt, 2837 Cedar Street,
Abilene

Associates

Boone, Dan, 425 Hawthorne Street, Abilene
Castle, David S., Jr., 1082½ N. 1st Street,
Abilene
Chapman, David Hall, 702 Sammons Street,
Abilene
Semple, William S., Box 12, Brownwood
Terry, Daniel H., 602 W. 2nd Street, Fort Worth



SUNILAND

HOUSTON

COMMERCIAL DIVISION

CORDOVA SHELL LIMESTONE

*Gives Distinctive Originality
to Interior Design*



Distinctly different . . . decidedly beautiful are the interior designs possible with Cordova Shell Limestone. Its warm natural beauty, its dignity and force, commands attention and becomes the focal point in the entire decorative effect.

Cordova Shell merits more attention than the ordinary stone because it has extraordinary characteristics. Its creamy color is unusually pleasing, ranging from buff to golden tints . . . blends with simplicity and perfect harmony with other materials. And this gifted stone is sculptured by nature with an ever-changing pattern of shell and shell fragments. Color deepens in the imprints to a golden intensity.

Cordova Shell Limestone, whether used for interior or exterior design . . . for commercial, institutional or residential buildings, is always distinctive and original. It offers the architect unmatched freedom and creative challenge.

Hotel Pierre Grill Room,
New York City

We will be glad to send you samples, detailed information and beautiful color showings of Cordova Shell Limestone at your request.

TEXAS QUARRIES, INC.

P. O. Box 91 • Austin, Texas



Vina-Lux floors..fashioned for fifth avenue

TEXAS ARCHITECT
 Box 1733
 FORT WORTH, TEXAS
 Form 3547 Requested



Sak's Fifth Avenue, White Plains, New York • Kahn & Jacobs, Architects, New York City, N. Y.



Upper bracket stores throughout the country are finding Vina-Lux Reinforced Vinyl Tile the perfect answer to their

flooring problems. Its beauty of color, smooth, easy-to-clean surface, and foot-safe resilience qualify it without question as a superior sales back-drop for top-level merchandise.

Vina-Lux matches its own brilliant beauty with outstanding performance day-in and day-out. Regular cleaning and dry buffing enhance its lustrous built-in surface...without the use of costly waxes or floor finishes. Customers like its sure-footed com-

fort... and sales clerks find a welcome lessening of leg and foot fatigue at the end of the day's work.

Vina-Lux can help solve your clients' flooring problems. Why not ask us to have a qualified representative present the full story to you on America's leading vinyl-asbestos tile?

Vina-Lux[®]
 REINFORCED  VINYL TILE

AZROCK PRODUCTS DIVISION • UVALDE ROCK ASPHALT CO.
 FROST BANK BUILDING • SAN ANTONIO, TEXAS
 MAKERS OF VINA-LUX • AZROCK • DURACO • AZPHLEX

Section 3444 P. L. & R.
 U. S. POSTAGE
PAID
 FORT WORTH, TEXAS
 PERMIT No. 2037