

TEXAS ARCHITECT

OFFICIAL PUBLICATION OF THE TEXAS SOCIETY OF ARCHITECTS

MARCH
1958



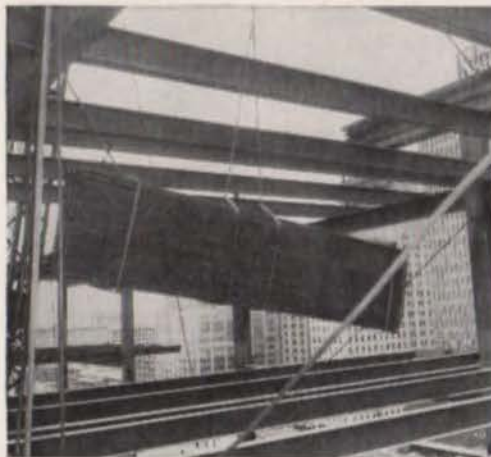
▶ "Forum" Editors Predict
Great New Building Boom
Will Extend Until 1967

▶ Southeast Texas Chapter
Selects New City Hall
At Texas City For Award

▶ 75th Anniversary Of
Texas University To Be
Statewide Theme For "TAW"



SEE PAGE 6



The big jobs go up faster with Southwest Steel Roof Deck


● Construction speeds up and costs go down when you use Southwest Steel Roof Deck for all sizes of buildings. It's true of the bigger buildings and smallest structures alike.

Southwest Steel Roof Deck is easy and fast to handle because it is light in weight. The long lengths and standard widths reduce to a minimum the number of pieces handled and operations performed on the job. As soon as the roof deck is installed, it is ready for immediate installation of insulation and built-up roofing, thus producing a finished job in quick time.

With this light weight and easy handling you get high strength-to-weight ratio; top structural quality and fire safety. Southwest Deck meets the high quality standards of the Metal Roof Deck Technical Institute.

Write us now for your copy of the new Southwest Steel Roof Deck Catalogue, soon to be available. It will give complete specifications, load data and erection procedures for our present decks as well as a new deck with different rib dimensions.

SOUTHWEST STEEL PRODUCTS

SUBSIDIARY OF  STEEL CORPORATION

Plants at: Houston, Tex., 5900 Katy St. • New Orleans, La., 3666 France Road
Sales offices: Houston • Dallas • San Antonio • Los Angeles • Kenner, La.

Your Headquarters for:

Short and Long Span Steel Joists • Standard and Long Span Steel Roof Deck
Steel Forms, Adjustable Steel Shores and Column Clamps Rented.



SOLD

... another home sold easier because of GAS built-ins

More than 8 out of 10 women prefer cooking with GAS!

GAS built-ins are the woman's choice . . . they should be your choice, too!

This preference means your homes are more acceptable . . . more saleable . . . to more women, when you've installed *flame-fast* gas built-ins!

Gas and gas built-ins dependability means far fewer "call-backs" for you in meeting F.H.A. obligations.

And your air-conditioning guarantee is easier to fulfill . . . gas ovens can be vented outdoors easily, inexpensively!

Help your homes sell faster . . . install preferred gas built-ins!

These GAS built-in features help your homes sell faster!



Burner-with-a-Brain — all most-wanted automatic features are available . . . and are pre-sold for you.



Smokeproof Broiling — gas gives exclusive features; like instant heat control and 2 appliances in 1 convenience (separate oven — broiler in same unit).



Economy — gas cooking costs less in operation, maintenance. High-quality appliances means lower "after-costs" for you.

2 SOUND ACHIEVEMENTS

NEW KAISER FIR-TEX ACOUSTICAL TILES

Even the holes are new in Kaiser Fir-Tex acoustical tiles! Our unique new drilling process produces more and cleaner holes per tile, assures high Noise Reduction Coefficients. Two new patterns—Regular (529 holes/sq. foot) and Casual (316 holes/sq. foot—in three diameters)—combine with smaller beveled edges to help you achieve continuous perforated ceiling effects. Available now in ½", ¾", ¾", and 1" thicknesses, in 12" x 12", 12" x 24" or 24" x 24" tiles. Contact your nearest Kaiser Fir-Tex Representative for data bulletins for your files.



KAISER GYPSUM COMPANY, INC. Kaiser Building—1924 Broadway, Oakland, California

THE TEXAS ARCHITECT

VOL. 8

MARCH, 1958

NUMBER 12

Official Publication of
THE TEXAS SOCIETY OF ARCHITECTS

The Texas Regional Organization of The American Institute of Architects

David C. Baer, AIA-TSA, 1200 Bissonnet, Houston Editor
Patrick J. Nicholson Editorial Counselor
John G. Flowers, Jr., Perry-Brooks Building, Austin Managing Editor

PUBLICATION BOARD THE TEXAS ARCHITECT

David C. Baer, Chairman, TSA-AIA Houston
Fred J. MacKie, TSA-AIA Houston
R. Max Brooks, TSA-AIA Austin
Terrell R. Harper, TSA-AIA Dallas
Albert S. Golemon, TSA-AIA Houston
Philip D. Creer, TSA-AIA Austin
Karl Kamrath, TSA-AIA Houston

Chapter Representatives

Brazos William E. Nash
Central Texas Eugene George
Coastal Bend Walter Wilde
Dallas Donald E. Jarvis
El Paso William Wuehrmann
Fort Worth Edward L. Wilson
Houston Harwood Taylor
Lower Rio Grande Valley Walter Bowman
North Texas Glynn Harris
Panhandle John Ward
San Antonio Leo Diehlmann, Jr.
West Texas Woodlief Brown

Texas Architectural Foundation, 327 Perry-Brooks Building, Austin, Texas

TEXAS SOCIETY OF ARCHITECTS OFFICERS

Reginald H. Roberts, President San Antonio
Robert P. Woltz, Vice-President Fort Worth
Jack M. Corgan, Second Vice-President Dallas
Arthur Fehr, Secy.-Treas. Austin
John G. Flowers, Jr., Exec. Director Austin

Directors

William E. Nash Brazos Chapter
Victor G. Probst Central Texas Chapter
Ben E. Christian Coastal Bend Chapter
Roscoe P. DeWitt Dallas Chapter
Robert D. Garland, Jr. El Paso Chapter
Hubert Crane Fort Worth Chapter
Thompson McCleary Houston Chapter
W. C. Baxter Lower Rio Grande Chapter
Ray C. Arnhold North Texas Chapter
Wilbur Kent Northeast Texas Chapter
Robert E. Hucker Panhandle Chapter
Raymond Phelps, Jr. San Antonio Chapter
George L. Ingram Southeast Texas Chapter
Woodlief Brown West Texas Chapter
R. Max Brooks A.I.A. Director

The President's Letter

By
Reginald
H.
Roberts

President,
Texas Society
of Architects



Close liaison with the American Institute of Architects, of which TSA is the Texas regional organization, is essential to the success of the statewide program of the Texas Society of Architects.

A day-long meeting in Houston February 10 gave representatives of many of the TSA Chapters a fine opportunity to learn at first hand of one of the most important AIA programs. In turn, representatives of the Octagon (the beautifully-restored Washington residence which is a museum of early America and forms a part of the national AIA headquarters building group) benefitted from the chance to get direct "grass-roots" reaction.

The occasion was a public relations workshop, arranged by Karl Kamrath, TSA-FAIA of Houston, chairman, and other members of the TSA public relations committee. Presiding were Mr. Kamrath, also a member of the national public relations committee, and Bob Denny and Ted Morris of Washington. Mr. Denny is with Henry Kaufman & Associates, public relations counsel for the AIA. Mr. Morris is a veteran member of the Octagon staff.

During the Houston session, those present saw previews of extremely interesting film slide presentations to be made available shortly at the Chapter level. Many of the TSA Chapters will undoubtedly be showing these productions, one explaining the profession of architecture in general, the other aimed more specifically at schools, during coming months.

"FORUM" PREDICTS GREAT NEW BOOM

One of the more interesting news releases of the past several weeks is in considerable contrast to the generally gloomy tone of stories about increasing unemployment and lengthening economic shadows.

This story, based upon predictions by the magazine "Architectural Forum," predicts a construction boom of "dazzling" proportions. Between now and 1967, "Forum" states, construction outlays will total \$600,000,000,000. To get this into proper perspective, this would top the present value of all existing U. S. private structures!

Although the prediction may be evidence of supreme optimism, it is based upon objective study by economists of repute. Two cardinal assumptions underlie the FORUM predictions, and both appear sound. One is the tremendous growth in population, which will automatically mean a great step-up in the rate of new family formation. Few Americans realize today, for instance, that it is incorrect to speak of a nation of 160,000,000 Americans, much less the old standby quotation of 150,000,000. The adjusted statistic, in this year of 1958, is 173,000,000—and going up constantly.

The second assumption is related to the first—that the Gross National Product will move on up to provide the goods and services needed by increased millions. If we are to maintain the U. S. standard of living, this must be so.

At the 1967 level, if the "Forum" prediction is even reasonably true, the architectural profession and every phase of the construction industry will look back upon the "rolling recession" of 1957-1958 as a temporary setback indeed.

Published monthly by the Texas Society of Architects in Houston. Subscription price, 50c per year, in advance. Copyrighted 1951 by the T.S.A., and title registration applied for with the U. S. Patent Office.

Editorial contributions, correspondence, and advertising invited by the Editor. Due to the nature of the publication, editorial contributions cannot be purchased. Publisher gives permission for reproduction of all or part of editorial material

herein, and requests publication credit be given THE TEXAS ARCHITECT, and author of material when indicated. Publications which normally pay for editorial material are requested to give consideration to the author of reproduced by-lined feature material.

Appearance of names and pictures of products and services in either editorial copy or advertising does not constitute an endorsement of same by either the Texas Society of Architects or the American Institute of Architects.

TSA-AIA Public Relations Workshop Held At Houston February 10

Two new semi-animated films, to be seen across the nation later in 1958, were previewed for representatives from the TSA Chapters at a day-long TSA-AIA public relations workshop in Houston February 10.

Produced by Henry J. Kaufman & Associates of Washington, D. C., public relations consultants to the AIA, the films are separately concerned with homes and schools. They formed the framework for a presentation by Bob Denny of Henry J. Kaufman & Associates, and Ted Morris of the AIA, emphasizing the importance of constant liaison between the AIA and its 126 component chapters in implementing a nationwide public relations program.

The program, aimed primarily at better service to the architect's client, stresses a high level of professional proficiency. It also emphasizes better knowledge of the profession of architecture, those who practice within it, and how they serve the public.

TSA Chairman Presides

Presiding at the February 10 meeting, held at the Shamrock Hilton Hotel in Houston, was Karl Kamrath, TSA-FAIA of Houston, chairman of the TSA Public Relations Committee. Mr. Kam-

rath is also a member of the national AIA Public Relations Committee.

Mr. Denny began the program with an explanation of the current status of the AIA public relations program, including both 1957 accomplishments and projected work for 1958. He then went through a presentation prepared especially for Chapter officials.

The morning session concluded with a showing of the two new films, which were discussed in detail. TSA representatives who saw the semi-animated presentations were enthusiastic about

their value in local showings, and the films will be widely shown over the state beginning in approximately 60 days.

Case Histories Analyzed

Mr. Denny and Mr. Morris continued their presentation during the afternoon, with the workshop discussing various public relations projects and problems in detail. In conclusion, actual case histories were analyzed, including one situation showing dramatically the false economy and tremendous potential losses involved in school districts hiring a staff architect.

Following the workshop, participants were guests of Mr. and Mrs. Kamrath at a buffet supper in the Kamrath home.

New Films

Johnny, star of AIA's new, semi-animated color film on School building has good reason for his contented grin. His school, the film shows, is the best bargain on the building market today. It's the product of intensive, intelligent teamwork between educators and architect—tailored to the very specific requirements of the community.

Cave man in "What's A House?" illustrates that whatever his specific needs, man's home must be liveable, provide companionship, warmth and the satisfaction of ownership. The film runs 14 minutes, is designed to be shown either by itself or as part of a lecture and discussion program in schools and before civic groups, etc. Prints of both films may be purchased for \$65.00 each from the Octagon or can be rented for \$5.00 each.





You can depend on *Concrete Construction*
for the utmost in sales appeal



Safe-and-sound, long-term house financing requires safe-and-sound, long-lasting construction. Without good materials and proper construction, rapid deterioration usually takes place. This leads to high repair and maintenance bills and heavy depreciation. And this can result in dissatisfaction and substantial losses by owner and builder alike.

Both the builder and owner receive maximum protection when houses are built with concrete masonry walls, concrete floors and firesafe roofs of concrete tile or asbestos-cement shingles. Such construction offers the best protection against the investment-destroying forces of storms, decay, termites, vermin and fire. *Concrete can't burn!* No other material is so weather-resistant, so inexpensive to maintain or so long-lasting.



Concrete houses make better homes because they retain their strength and attractiveness longer than those built of other materials. They protect the owner and community against blight and depressed values that often go with less sturdy construction. You can always depend on concrete to give you the utmost in sales appeal.

Write today for a free color booklet on concrete houses. Thousands of prospects have seen it.

PORTLAND CEMENT ASSOCIATION
110 East Eighth Street, Austin 1, Texas

A national organization to improve and extend the uses of portland cement and concrete . . . through scientific research and engineering field work

Representative Selection, Southeast Texas Chapter, AIA

Project: City Hall, Texas City, Texas

Architect: George L. Ingram, TSA-AIA, Beaumont

From 15,000 inhabitants at the time of the 1947 explosion, Texas City has now grown to a city of over 30,000. This rapid growth brought new responsibilities to the city government.

The departments of the city government were rapidly expanding in an effort to keep pace with the growing population. The existing city hall had become woefully inadequate, and to provide the necessary services, a new city building was needed.

In determining that city office space must be provided, evidence was also presented that other facilities for the cultural development of the community would soon be needed. Texas City was fortunate to have a 55-acre tract set aside for a municipal center development. To chart the future growth of the civic development, a master plan of the site was prepared and priority given to the development of the buildings and areas. Now on the site is a Recreation Building, City Hall, and as part of the park facilities, a swimming pool. Provisions have been made for a future City Auditorium, Library, and additional park facilities.

Recreation Building First

The first unit to be constructed was the Community Recreation Building; however, before the construction was hardly begun on this building, planning had already been started for a new City Hall. With the rapid growth pattern that had been established, it was decided that it would be unwise to build for a city less than double the present population.

Since the City Hall was to become the focal point of the entire civic center and would house the government of the city, the building developed a slightly more formal expression in its execution. In general, the City Hall has the same free and informal appearance as the previously designed building with the exception of the dignity expressed in the lobby, commission meeting room, and Mayor's office.

The lobby is the first impression made on visitors to the City Government; therefore, it was decided to make it rather rich in material selection. At the same time the theme of



City Hall at Texas City

A view of main lobby of the City Hall at Texas City, selected by members of the Southeast Texas Chapter, AIA, as representative of recent architectural work in the Chapter area. The architect for the project was George L. Ingram, TSA-AIA, Beaumont, Texas.

informality was retained in the use of a highly-figured and warm-colored marble for the walls. To further make the City Hall inviting to all, the entrance was composed of glass slab doors and open glass areas.

Commission Meeting Room

The Commission Meeting Room is the seat of the City Government, and thus established its own design criteria. Generous use of walnut and the raised commissioners' podium, together with the pew-type seating, provided a feeling of quiet dignity for this chamber. The same theme of dignity was carried into the Mayor's Chambers, adjoining the Commission Meeting Room, and again walnut was used generously.

The Mayor is both the chief executive and the chairman of the city commission. A private meeting room was provided adjoining the Mayor's office, and adjoining the offices provided for each of the City Commissioners. Although each of these offices can have privacy, they are also arranged to give access to the public at all times.

The administration of the city functions is the direct responsibility of the City Secretary and the foremost of these duties are found in the tax and records division. Immediate access to the utilities, tax, and record section is from the lobby, through several double doors that are open at any time the City Hall is open. This entire area is under direct supervision of the City Secretary at all times, since his office is adjoining and is provided with generous spaces of glass.

The front wing of the building houses all of the other functions of the City Government and includes the Planning Commission, City Attorney, City Engineer, and his engineering division, and a large inspection department. The city employees were also provided with a comfortable and cheerful employee lounge.

The City Hall is provided with the latest of air-conditioning equipment, so that any portion of the building can be air-conditioned for its requirements without affecting other portions of the building.

new

HORNFLEX

sealant solves
movement and
temperature problems
in curtain wall joints.



NORMAL



50% COMPRESSION



100% EXPANSION

Movement due to winds and extremes of temperature poses one of the most trying problems for the designer of curtain wall buildings. For not only must the joint material seal out water, it must be flexible as the building moves with the wind and its elements expand and contract with heat and cold. Too, unequal coefficients of expansion of different materials create additional joint stresses.

Hornflex Thiokol® LP-32 Compound is especially effective in curtain wall construction for sealing joints between panels of stainless or enameled steel, aluminum panels and glass in needle-point glazing. The squeeze-stretch range of Hornflex absorbs exceptional stress without loss of bond! It provides an elongation of 325% and stays firm and elastic over a temperature range from 50°F BELOW ZERO to 250°F.

Laboratory test and job applications indicate that Hornflex, properly installed, will provide excellent protection for periods up to 25 years and more.

Other uses for Hornflex are to fill and seal surface joints in bridges, highways, swimming pools, etc. It has excellent bond to other building materials including those of dissimilar surface density and structure. Hornflex does not oxidize or absorb moisture; effectively seals joints against air, dust and water.

Hornflex is supplied in a pleasing shade of grey which blends well with aluminum, stainless steel or concrete. It is also available in red, aluminum, white and black.

Like complete details? Call your local Horn representative or write for Hornflex Technical Bulletin.

**A registered trade mark of the Thiokol Chemical Corp.*



A. C. Horn Company of Texas

SUBSIDIARY OF

Sun Chemical Corporation

Box 2585, Houston 1, Texas

Plants: Houston • Long Island City • Los Angeles • San Francisco • Toronto
Sales offices and Warehouses throughout the United States and Canada

DIVISIONS OF SUN CHEMICAL CORPORATION

HORN (paints, maintenance and construction materials, industrial coatings) • WARWICK (textile and industrial chemicals) • WARWICK WAX (refiners of specialty waxes) • RUTHERFORD (lithographic equipment) • SUN SUPPLY (lithographic supplies) • GENERAL PRINTING INK (Sigmund Ullman • Fuchs & Lang • Eagle • American • Kelly • Chemical Color & Supply Inks) • MORRILL (news inks) • ELECTRO-TECHNICAL PRODUCTS (coatings & plastics) • PIGMENTS DIVISION (pigments for paints, plastics, printing inks of all kinds) • OVERSEAS DIVISION (export) • A. C. HORN COMPANY, LIMITED (Canada) • GENERAL PRINTING INK CORPORATION OF CANADA, LIMITED • FUCHS & LANG de MEXICO, S. A. de C. V.

How Often Is Architecture Art?

BY ANN HOLMES

Fine Arts Editor

(Editor's Note: More and more, the columnists and critics of our leading Texas newspapers are writing of architecture. Here is an excellent recent column by Ann Holmes, fine arts editor of the Houston Chronicle, which occasioned wide interest):

Walk down Houston's streets any weekday. Watch the great cranes lifting giant buckets of earth, or the mammoth drills spinning toward the core of the earth and drawing up curls of hard-packed clay which have not seen the daylight in decades, if ever at all.

This is construction. And behind construction is architecture — a practice which, at best, is touched deeply by art. How often is it really art?

Some of the greatest artists of today are architects, and that is a remarkable consideration when we look about us at the painters and sculptors and find too few hallowed old heads.

Consider Mies van der Rohe, the internationally revered architect and mentor of the far-reaching school of style known as the "Miesian." Consider Frank Lloyd Wright a strong-willed man who rode to fame on his outspoken prejudices and his philosophy of "organic architecture."

Not many of the arts today can claim venerable leaders who inspire whole schools of followers, and young disciples who will admit their loyalty to one leader or the other.

Such is the case in a general way with the leadership of Frank Lloyd Wright and Mies van der Rohe, though there are surely other justly famed creative architects too: Marcel Breuer, Le Corbusier in France, Richard J. Neutra and Eero Saarinen.

Such admiration as a young architect may hold for a senior man in his field is rarely seen among individual painters and sculptors. There is no Jackson Pollock "school" of drip painting, no Robert Motherwell following which admits to it, and no battery of junior Rothkas as such, though here and there we see plentiful influences of these well-known artists.

An architect of a major building thinks on a vastly broader plane than

the easel painter. He brings a work of art out of such varied objects as boards and glass and steel beams, and bricks and composition—even trees and flowers.

As he is working in three dimensions, an architect is a sculptor, and he is working in epic scale, his art must be right, or his error is not only a large blunder but a public embarrassment.

Usually, major architects, like symphony conductors, are men whose minds search out major truths. They seem inevitably to be men of philosophy, whose writings or speeches are punctuated by eclectic references, chosen from a variety of doctrines and experiences.

The best of them search constantly for the definition of a building or a house, so that their own approach to it will be timeless, universal, humane and beautiful.

In the first chapter of Wright's warm book, "Genius and the Mobocracy," he probes the characteristics of the architect. The one that lingers in the memory says: "It is the poet in him that is the great quality in him."

Happily in our environment we are free men, free to practice our trades and our arts without much censorship.

This means that our communities will nourish some structures which we like and some which we do not like. Taste is not an absolute. There are no civic committees forbidding this or that building. We must simply live among the structures we happen to hate.

Our only hope, it seems to me, is the artistic conscience of the architect, AND, God willing, the taste and the sense of the client in choosing a good architect, and then letting him do his best work.

Let us encourage our architects to be men of art, let us hope that their clients will urge the best from them. That is our only hope for a community blessed with many beautiful buildings. The finest architects have long ago envisioned this and prayed for it. Occasionally we see it right at home.

Houston Home Parade Expected to Draw New Record Crowds April 13-27

More than 170,000 persons are expected to attend the 1958 Houston Parade of Homes and Home Show slated April 13-27.

In what will be the largest Parade of Homes ever held in Houston, some 32 homes in the \$15,000-\$20,000 price range will be open to the public. Twenty-one builders have already signed up to participate in the exhibit which will feature many architectural designs, ideas, materials and construction methods never before shown the public.

Angela Mascari has been appointed chairman for the 1958 Parade by Robert Clemens, president of the Houston Home Builders Association, Parade sponsors. Assisting him will be committee chairmen J. S. Norman, Jr., and Krist Hubert. Gordon Neilson, the association's executive vice-president, will serve as executive director for the event.

Builders and architects are making final plans now for their Parade entries. "Never before have we seen so much enthusiasm from the building profession," Mr. Mascari commented, "Many of the participating builders will construct two homes for the Parade."

The homes will be constructed on lots 65 by 120 feet in a new section of Sharpstown, the world's largest suburban subdivision. Work is underway now on paving roads in the Parade area.

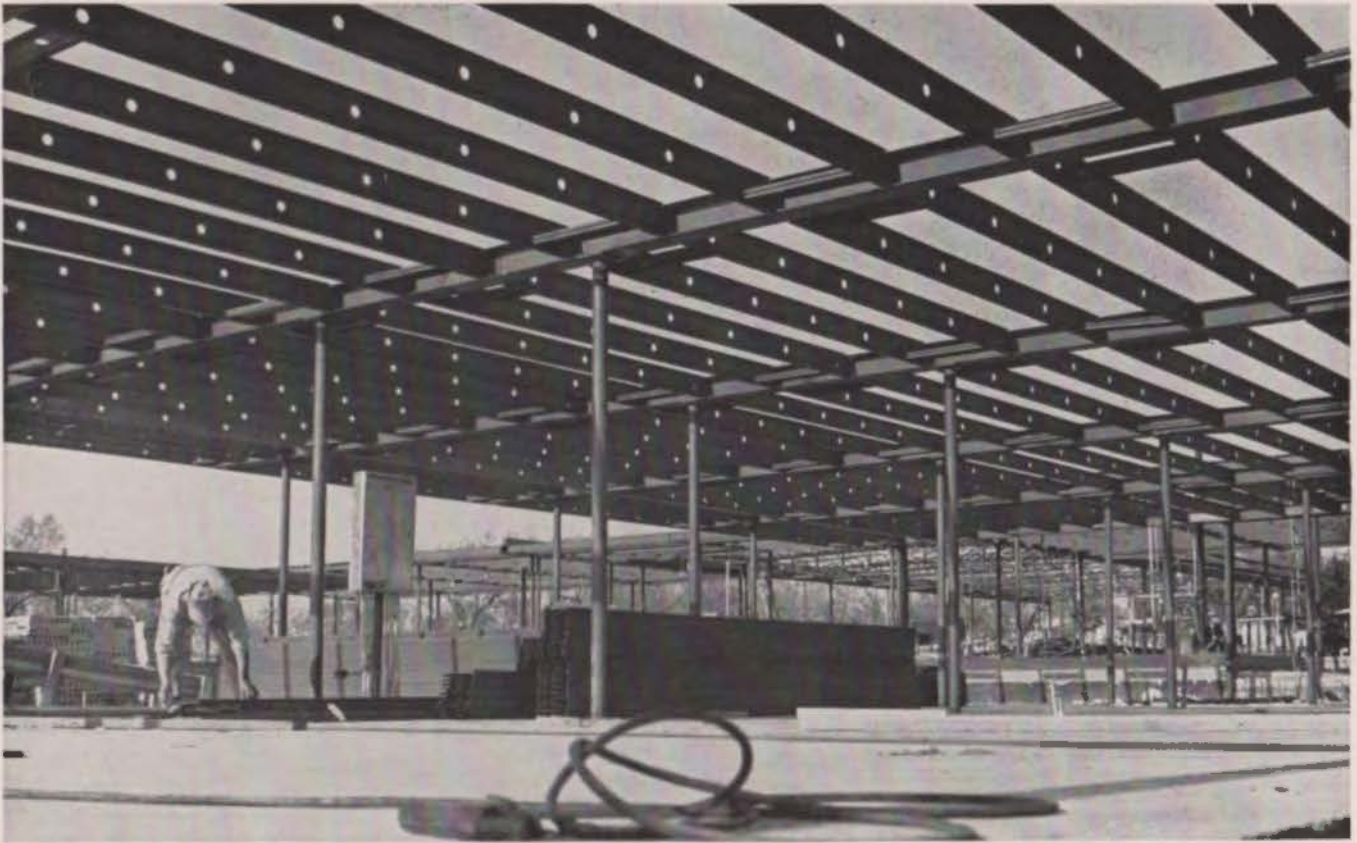
The Parade will, as in the past, be combined this year with the Houston Home Show which will feature over 60 exhibits including materials, equipment and accessories for the home.

Woodwork Institute Publishes New Guide On Solid Core Flush Doors

A new brochure, number 5 (Revised), dealing with exterior and interior Solid Core Flush Doors has been published by AWI.

Copies have been mailed to more than 10,000 architects and specification writers in this country and Canada.

Single copies may be obtained free by writing to Architectural Woodwork Institute, 332 South Michigan Avenue, Chicago.



ANOTHER TEXAS SCHOOL WITH STRAN-STEEL JOISTS . . . MORE THAN TWO MILES OF 'EM!

Construction of the Devine Elementary School in Devine, Texas, demonstrates again that Stran-Steel nailable joists simplify the application of collateral materials—and that the close fit between joist and beam reduces ceiling depth. No need for boxed beams or dropped ceilings here! In all, 11,357 lineal feet of Stran-Steel joists were used in this one-story masonry building. And the architect says construction economies made possible two additional classrooms!

Specify Stran-Steel joists for an economical, permanent framing system that is lightweight, firesafe and *nailable*. Better yet, mail the coupon for information about Stran-Steel's *complete* building system—or contact your nearest Texas dealer.

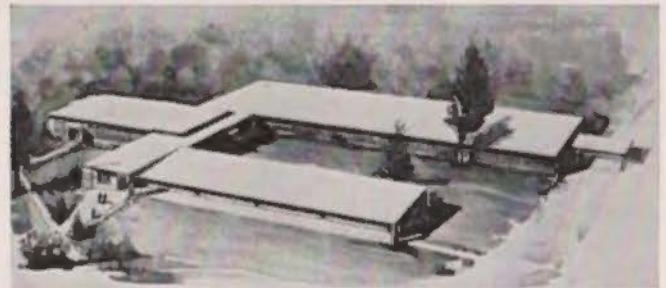
Dept. 42-17



STRAN-STEEL CORPORATION
Detroit 29, Michigan • Division of
NATIONAL STEEL CORPORATION



JOISTS and STUDS BEAMS ROOF DECK C-SECTIONS COLUMNS CHANNELS



Architect for the Devine School: Adams & Adams, A.I.A., San Antonio. Stran-Steel for this school was supplied by General Supply Company, Inc., San Antonio.

**For more information, see your Stran-Steel Dealer
or send the coupon**

DALLAS, Blue Diamond Co., 2722 Logan St., Hamilton 8-1331

HOUSTON, Buie Building Material Co., 7400 Washington Ave., P.O. Box 13215, Underwood 4-7781

SAN ANTONIO, General Supply Co., Inc., 227 S. Salado, P.O. Box 4368, Station A, Capitol 6-7631

SAN ANGELO, McRan, Inc., P.O. Box 3036, Phone 6288

Stran-Steel Corporation, Dept. 42-17
2219 Bellefontaine, Houston 25, Texas

- Please send me the Structural Systems Catalog.
 Please have your representative contact me.

Name _____ Title _____

Company _____

Address _____

City _____ Zone _____ State _____

Recipe for Successful



☞ T. S. A. CONFIDENTIAL ☞

WANTED - ARCHITECTURAL ASSISTANT

This position is with The University of Texas System, with headquarters in the Office of the Comptroller at Austin, Texas. Beginning salary: from \$404.00 a month to \$467.00 a month. This position involves doing architectural work, part of which might be classed as sub-professional, in connection with new building construction and repair or remodeling projects, under close supervision of Mr. Walter C. Moore, Registered Architect and Assistant to the Comptroller, such as: assisting in planning, preparing and/or checking plans and specifications and occasionally inspecting construction work, furniture and equipment, etc. 85 percent to 90 percent of the work will be done in Austin, but occasionally trips will be made to our branches at Galveston, Houston, Dallas and El Paso.

Under current rules of the Texas Board of Architectural Examiners, experience in this position can be counted toward registration up to 18 months. Applicant should either be a Registered Architect or be in a position to be registered within the next two or three years.

For additional information and application blanks, please contact Charles H. Sparenberg, Comptroller, The University of Texas, Austin, Texas

T. S. A. EXECUTIVE BOARD MEETING

The first meeting of the TSA Executive Board took place on January 18th, with all of the Officers and thirteen of the fourteen Chapter Directors in attendance. Chapter Officers were present from ten Chapters. Twelve Committee Chairmen, one Past Director, the Chairman of the Publication Board, the PR Consultant, the Regional Director, and the past President were present. In all, it was a junior convention with forty-six TSA members present.

RECORD BUDGET

A budget of \$34,737.00 was adopted, with the proposed \$3,500.00 increase to be devoted to expansion of the PR Program and the creation of a news bureau in TSA Headquarters. Plans are being formulated at this time for the realization of this last item.

DELINQUENTS

The ever present problem of delinquent dues was reviewed and the TSA office was directed to inform the AIA of all persons whose dues were not paid at the beginning of the year, after a careful check had been made with Chapter Treasurers. The deadline of February 15 for forwarding of this list to the Octagon was set.

OFFICE PRACTICE COMMITTEE

In the absence of the Committee Chairman Mr. Brooks discussed the AIA Board of the labors of this important committee. Mr. Brooks reported that the committee document, "Practice of Architecture" with its Fee Schedule was not accepted by the Board and that it was important that it be known to all chapters that only

the regular TSA Fee Schedule is currently in force in Texas.

Several other documents submitted by the Office Practice Committee will be dealt with by the AIA Board at the April meeting.

INSURANCE COMMITTEE

Harry D. Payne, Chairman, reported on the constantly expanding and always active work of the insurance committee and the several new areas under investigation by this committee. In addition to the widely accepted TSA Group Insurance plan, the committee is also concerned with the committee on professional liability and special insurance problems having to do with partnerships and associations.

19TH ANNUAL CONVENTION

Thomas Noonan, Chairman, reported on the organization of the San Antonio Chapter into working committees to welcome the architects of the State to the "biggest and best convention yet".

The first annual Board meeting was a vigorous hard working occasion with much of the year's program laid out and progressive plans for a productive year formalized.

REGIONAL DIRECTOR REPORTS

Regional Director, R. Max Brooks, F. A. I. A., reported on the AIA Fall Board Meeting at Phoenix. Among the items reported was the receipt of nominations of Walter Gropius, Wallace Harrison, and Meis van der Rohe for the Gold Medal; the Cleveland convention theme of "Architecture in the New Age"; and recommendations of locating NCARB headquarters in Washington.

◁ IMPORTANT COURT DECISION ▷

A court case of extreme importance to all members of the Architectural profession has recently been decided in favor of Austin architectural firm, Fehr and Granger. This case is of such importance that it seems necessary to report on it in some detail.

In 1955 Fehr and Granger received a commission to design a fraternity house to be built in Austin and executed an AIA standard contract form with the building committee of this organization. Preliminary plans were approved in May of 1955, when the firm started the preparation of working drawings.

Dissension developed within the building committee without the knowledge of Fehr and Granger, and they were ultimately discharged by a formal letter in January of 1956. They were also informed that another firm had been engaged and were already preparing drawings for a building. Fehr and Granger then contacted the new firm immediately and told them that they were engaged in unethical practice since the Austin firm had not received a settlement from the building committee. Fehr and Granger had not received payment for preliminary drawings at this time and submitted a bill covering preliminary work and that portion of the working drawings which had been completed at the time of discharge.

It was subsequently determined that the working drawings were approximately 80 percent complete. The firm submitted their bill to the building committee who declined to pay it, and attempted to settle on the basis of preliminary sketches only. The architects declined to accept on this basis and entered suit against the building committee, the local chapter, the Texas Foundation of the Chapter, and all national and state officers of the fraternity.

Fehr and Granger were represented by the Austin legal firm of Graves, Dougherty and Gee. Preliminary hearing was held in which defendants entered a Plea of Privilege which resulted in the site of the trial being in Travis County, and the building committee in the suit required to deposit in an escrow account in a local bank a sufficient amount of money to cover the payment of the fee, court costs, attorneys' fees, and interest of 6 percent on the architects' fee from the time it was due.

A trial by jury was held in Travis County and a decision was made in favor of Fehr and Granger. The build-

ing committee appealed to the Court of Civil Appeals. A hearing was then held before the Court of Civil Appeals and the judgment of the District Court was upheld. The case was further appealed to the Court of Civil Appeals requesting a re-hearing of the case, which was denied.

The building committee then applied to the Supreme Court for a Writ of Error in the findings of the Court of Civil Appeals. The Supreme Court held there was no reversible error. The building committee appealed to the Supreme Court for re-hearing which was denied, and the escrow agent was notified to pay the architects' claims with interest, court costs and attorneys' fees.

This, in very brief form, reports on what was a complicated and lengthy period of litigation lasting nearly two years. The important conclusions as well as the legal precedent set in this case included:

a. The AIA contract form has been completely validated and the importance of always using the contract has been demonstrated;

b. Membership in the AIA has taken a real stature in the courts, for the technical witnesses called were questioned closely as to their AIA status and the standards of ethical practice were fully revealed in testimony; and finally,

c. The case is a marvelous reaffirmation of the value of conducting architectural practice on a high ethical plane and having the courage to make ethical standards stand up in court.

In reviewing the case with Fehr and Granger three further points were noted: First, these architects were grievously disappointed that other architects who professed to be AIA members and believers in the mandatory standards of practice would accept a commission from a client before a satisfactory settlement had been made to terminate a valid contract officially. Second, Fehr and Granger were amazed that an architect who was not a corporate member of the AIA would represent himself so to be under oath in order to gain credibility as a witness against Fehr and Granger. Third, Fehr and Granger were greatly pleased that reputable and prominent members of the profession would willingly and capably serve as technical witnesses in their behalf.

It is quite evident after reading all of the testimony and court decisions that this has been a precedent setting case. All members of the profession

in Texas are in the debt of Fehr and Granger for undertaking this case and pursuing it to a successful conclusion.

COMMITTEE APPOINTMENTS

President Reginald Roberts announced the following committee appointments, which were approved by the Board:

Nominating Committee:

Thompson McCleary

Texas Construction Council:

Preston Geren

Olin Puckett

Howard Barr

Earl Neff

Milton McGinty

TA Study Committee:

Jack Corgan, Chairman

Victor G. Probst

Harwood Taylor

Albert Golemon

Herbert Tatum

Karl Kamrath

EXECUTIVE COMMITTEE

The Board designated the elected Officers, including the Regional Director, to serve as an Executive Committee to transact the Board's business between meetings.

TEXAS ARCHITECTURAL FOUNDATION

Ed Carroll, past TSA President, was introduced as the new President of the Texas Architectural Foundation. Other new TAF Officers included Grayson Gill, Vice-President, and Philip D. Creer, Secretary-Treasurer. Mr. Carroll announced the foundation of a Committee of Architectural school heads to study the entire Awards and Scholarships Program with a view toward making competitions and scholarships programs more harmonious with the curricula of the several schools.

TEXAS ARCHITECT MAGAZINE

David C. Baer, Chairman of the Publications Board, reported on plans to expand Texas Architect during 1958, with the inclusion of a newsletter insert, better editorial content which "sells" architecture, and more news of Chapter activities. He urged greater Chapter cooperation in supplying news.

PR Consultant, Pat Nicholson, stressed the importance of greater architect interest in TA, in order that the magazine can be more responsive to the interests of the majority of readers.

CHAPTER AFFAIRS

George Pierce, Chapter Affairs Chairman, reported on the Student Log Book Program, the AIA Annual Forum, and the "Document of the

Month" selection which will be distributed to every AIA Chapter. He asked for recommendations from Texas Chapters for significant documents. He also pointed out the need for greater cooperation with Student Chapters at the five schools of Architecture, and the continuing need for closer association with the students in order that they can learn about actual problems of practice from the practitioners of the State.

EDUCATION COMMITTEE

Philip Creer, F. A. I. A., Education Committee Chairman, re-stressed the importance of the Log Book Program and the emphasis given it by the AIA Education Committee and the collegiate schools of Architecture. He further discussed the "Architect in Training Program" and the up-coming meeting of the AIA Education Committee at Nantucket in June. He reported on the cooperation of the five schools of Architecture with the Awards and Scholarship Committee.

BY-LAWS COMMITTEE

Past President, Herbert Tatum, F. A. I. A., Chairman of the By-Laws Committee submitted to the Board copies of revised TSA By-Laws which incorporated the changes of the 18th Annual Convention as well as the collateral changes in language which these By-Laws necessitated. The Board approved the report and directed that the amended By-Laws be published and distributed. Mr. Tatum further reported on the changes to the local Chapter By-Laws to bring them in accord with mandatory provisions of the AIA and TSA By-Laws.

RESEARCH COMMITTEE

Chairman Ralph Cameron, first TSA President, reported on the inactivity of this committee with spirited pleas that specific projects be developed for study at the regional and chapter level. The Regional Director was requested to bring this matter to the attention of the AIA Board to see if research projects could be developed which could be broken down into smaller units suitable for Chapter investigations.

HOSPITALS AND HEALTH

Arthur Thomas, Chairman, reported on the activities of this committee at the National level and urged Chapters to select qualified and interested persons to serve on committees since this is a specialized field and the committee engages in some significant

cost analysis surveys. He stated that the next meeting of the AIA Committee will be held in Minnesota in May 1958, and promises to yield some significant work projects for the TSA Committee.

WEST TEXAS CHAPTER SHINES

The West Texas Chapter joined with the West Texas Chapter of the Associated General Contractors in presenting a significant and highly effective joint meeting in Midland January 29.

Mr. Kenneth McFarland, General Motors official presented a brilliant speech on the free enterprize system and the need for character, morality, honest, and integrity in today's world. It was an extremely interesting joint effort between two important segments of the construction industry, and is a marvelous example of a fine PR Program which will have lasting benefit in the West Texas Area. Not only was this Program attended by 275 people, it was covered for a full hour on TV Station KMID-TV. It is especially significant that a number of directors of the Associated General Contractors were present at this program, and, despite some early misgivings, decided that joint activities of this sort were generally significant, and should be widely imitated throughout the country.

NECROLOGY

Jack Turner, long time architect in Wichita Falls, passed away in early December, 1957. All architects who knew Mr. Turner were deeply shocked to hear of his tragic and untimely death.

Buildings

*a dash of sun—a pinch of fresh air
...and Soulé aluminum windows**

Only Soulé gives you freedom to design windows to your exact dimensions. There are no restrictions to standard sizes.

With the superior strength of Soulé tubular ventilator sections, you can design maximum glass areas and use larger ventilators. Combined with Soulé alumilite finish and our one-company service—manufacture and installation by the West's largest manufacturer of aluminum windows, curtain wall and window wall systems—you have the ingredients that make Soulé Series 900 truly the architect's window.

*Soulé quality series 900 aluminum windows are now available with integrally weather-stripped sections for materially reducing heat loss and dust or air infiltration.



SOULÉ STEEL COMPANY

San Francisco 1750 Army Street, VAlencia 4-4141 • Los Angeles 6200 Wilmington Avenue, LUdlow 5-0911

San Diego 1975 Fifth Avenue, BElmont 2-1071 • Portland 2630 N.W. St. Helens Road, CApitol 3-5154

Seattle 4100 West Moriginal Way, HOlly 3600 • Spokane East 41 Gray Avenue, RIverside 7-8063

Phoenix 2026 South 11th Avenue, ALPine 3-3178 • Salt Lake City 220 Greyhound Building, EMpire 3-7728

Dallas 528 Interurban Building, RIverside 1-5225

Soulé
LEADER IN METAL WINDOWS

4128

Spring Branch School Selected By AIA Jury Panel

Name of School: Valley Oaks Elementary School

Address: Westview at Pech Road, Houston, Spring Branch Independent School District, Harris County, Texas

Architects: H. R. Winslett - Hugh E. Gragg, AIA-TSA, 3927 Essex Lane, Houston, Texas.

Structural Engineer: Ernest L. Vogt, Jr.

Mechanical Engineer: Jerold L. Davis

An American Institute of Architects jury panel in Washington, D. C., has selected the Valley Oaks Elementary School in the Spring Branch Independent School District near Houston for showing at a national convention of school administrators in San Francisco.

One particular attraction of the school is the use of natural ventilation from low casement windows, screened and protected on the south by planters under protected passageways; and from tall casements on the north. This feature has drawn unusual attention to the building because of continuing debate as to the use of air-conditioning in classroom and passageway areas.

A description of the school by the architects, Herschel R. Winslett and Hugh E. Gragg, both TSA-AIA of Houston, follows:

CONSTRUCTION OUTLINE:

Foundation: Drilled concrete footings with monolithic concrete beams and floor slabs.

Steel Frame: "T" columns, 10" beams, bulb tees, 8'-0" module throughout the building.

Exterior Walls: Brick with clay tile back-up.

Interior Walls: Plaster on metal lath and channels.

Ceiling and Roof Deck: "Tectum" with gypsum slab on top, over all of building except cafeteria, metal deck over cafeteria.

Roof: Four ply built up roof.

Floors: Asphalt tile, terrazzo in administrative corridor and toilets.

Water Supply and Sewage: From private utility company.

Heating: Convective hot water with small boiler for each class room wing.

Auditorium heated by gas fired units.

Administrative area has year round air conditioning, air to air system located on roof.

Lighting: Fluorescent throughout except incandescent units in auditorium.

DESIGN FEATURES:

On a fairly level wooded site, the

trustees of the school district requested that the architects design a 24-room classroom elementary school with provisions made for future expansion to meet the requirements of a growing community. Policy of the district dictated a design using the single loaded open corridor and covered passageways.

In designing the typical classrooms, ventilation, good lighting, instructional and service facilities, and storage spaces were the primary governing features studied in the planning of the building.

Low casement windows, screened and protected by planters (spaces for classroom garden projects) on the south side under the covered passageways, and tall casements on the north, afford through ventilation, and also pro-

vide a source of glare-free natural daylight.

A small sinkroom with storage cabinets is provided for each two classrooms. This room also houses the hot water forced air heating units.

For the kindergarten and first grade classrooms, there is a toilet room for each two rooms.

The administrative area consisting of a general office, principal's office, health facilities, teachers lounge, book and work rooms, and a special service room, are year round air conditioned. The special service room serves the multiple purpose of teacher-pupil and teacher-parent conference and also gives the P.T.A. a working area.

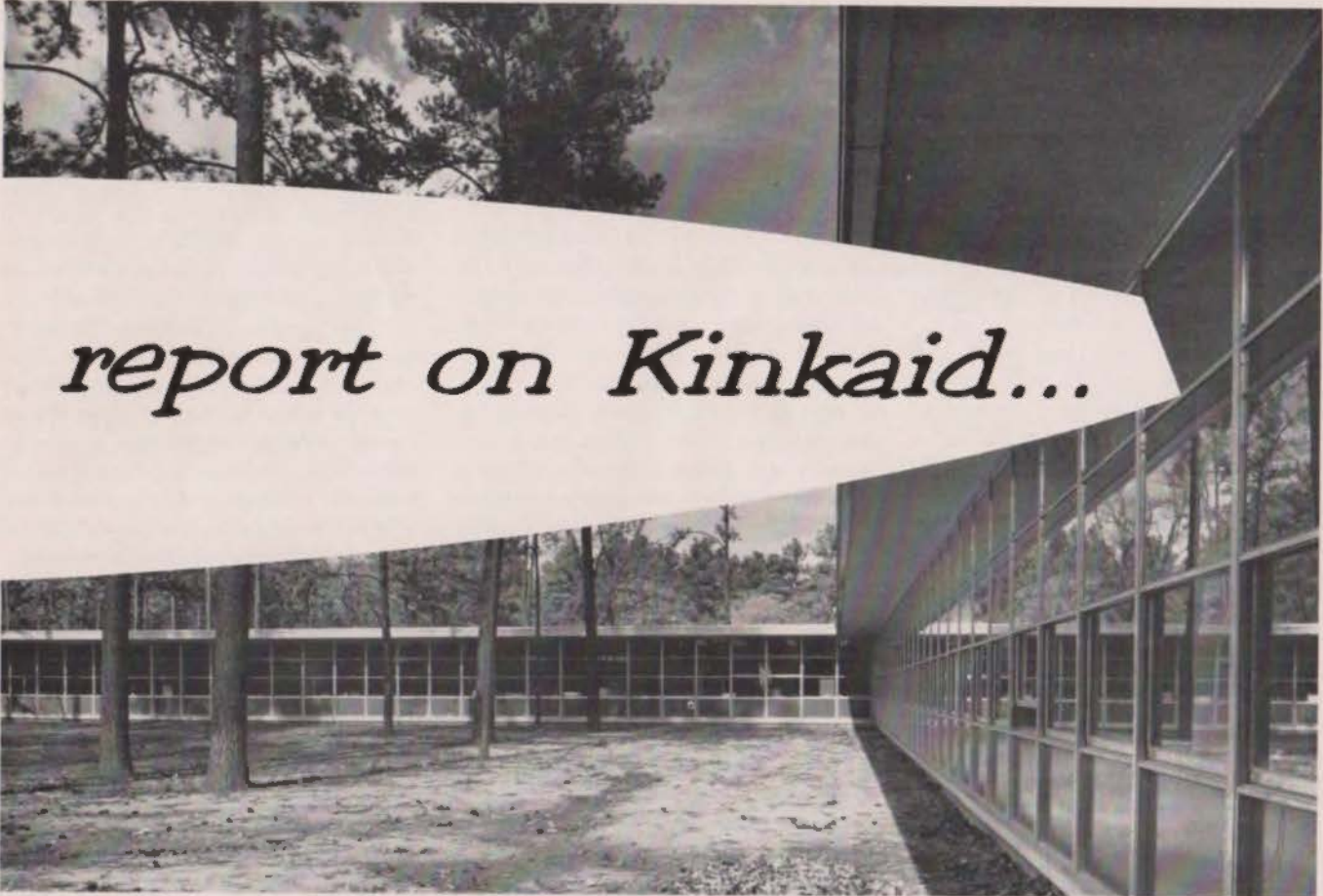
Because there exists no public transportation system in the area in which the school is located, the school district makes bus transportation available to all students. To avoid traffic congestion because of the large number of students using the buses, separate bus loading and passenger car loading facilities are provided.

Warm, neutral colors are used throughout for the walls, ceilings, and floors. Brightly colored panels adjacent to classroom doors, and the doors in the administrative area, are used as decorative features and as a method of color coding the various rooms.



Valley Oaks Elementary School

An exterior view of the Valley Oaks Elementary School at Spring Branch, showing covered passageways. The school, by Houston architects Herschel R. Winslett and Hugh E. Gragg, both TSA-AIA, was selected by an AIA jury panel for showing at a national meeting of school administrators.



report on Kinkaid...

Four hundred and six

completely assembled units of Apco Window Wall were used in the construction of Kinkaid Preparatory School in Houston. Vertical sliding vents were used to eliminate obstructions at passage level. Insulated sandwich panels, finished in porcelainized steel were used throughout. Manufacture, installation and glazing furnished by Apco-Rubin.

Architect: Lloyd and Morgan, AIA

"Window Wall units furnished by Apco-Rubin satisfied our design and ventilation requirements completely. We found units to be of uniform high quality in manufacture."

Contractor: Linbeck Construction Corp.

"We found Apco Window Wall easy to install and suited perfectly for window wall construction as exemplified by the Kinkaid School."



Manufactured by

apco
rubin

DIVISION OF TUSCO CORPORATION

1901 Franklin
Houston 2, Texas



TAW Theme: 75th Anniversary

TSA members in the 14 Chapters across the state will honor the 75th anniversary of Texas University during Texas Architects' Week this year, from April 13-20. The Executive Board of TSA felt that this would be a particularly appropriate theme for the annual TAW celebration, as all of Texas pays tribute to its state university.

After being held last year two months early, to coincide with the centennial of the American Institute of Architects, TAW now reverts to its traditional scheduling, and begins on the 215th anniversary of the birth of Thomas Jefferson, great American president-architect.

April 11-12 Conference

TAW events in the Chapters will center around affairs tying in with the statewide observance of the University of Texas anniversary, and one of the major events of the university celebration is to be held April 11-12, immediately preceding the opening of TAW. This event will be a Texas Conference, called to assess the human, material, and cultural resources of the state at the present time, and to project future developments in these areas.

TAW stamps, overprinted with the 75th anniversary symbol, will be distributed to the TSA Chapters with other special materials beginning March 31. In the meantime, the 14 TSA affiliates across the state will be completing the details of their TAW programs, as planning accelerates with the receipt of tie-in materials from Texas University the second week in March.

Events Now Planned

Among the TAW events already being planned in the Chapters are joint dinners with Texas University alumni, a dinner honoring the oldest architectural graduate of the University within a Chapter area, special showings of the television program "University World" and radio tapes from the Uni-

versity, and similar observances.

The celebration of the 75th anniversary of the state university began publicly on January 10, with a Conference on Expectations which reassembles in May after reporting to the Committee of 75, a group of key Texans from every walk of life who are surveying the entire University system in anticipation of an overall report to be made to the Board of Regents next December.

Other anniversary events, in addition to the Texas Conference of April 11-12, are a November 2-4 conference on issues facing the University of Texas, several high-level academic conferences, a series of "service conferences", including it is hoped a significant meeting on the profession of architecture, and a June commencement at which the 75,000th University degree is to be awarded.

Curtain Wall Seminar Held

Houston area architects were introduced to curtain wall panel construction at an all-day seminar held in Houston.

The Producers' Council, Inc., national organization of building materials and equipment manufacturers and as-

sociations, was sponsor of the program in conjunction with the Houston Chapter, AIA.

Top research and product development authorities from leading national companies were in Houston to take part in the program. Among them were Otto F. Wenzler of Libbey-Owens-Ford Glass Co., Toledo, Ohio; A. F. Schwerts of Republic Steel Corporation, Youngstown, Ohio; Paul V. Mara of Kaiser Aluminum & Chemical Sales, Inc., Chicago; T. W. Hunt of Portland Cement Association, Chicago; H. K. Laver of Minnesota Mining & Manufacturing Co., St. Paul, Minnesota, and others.

C. D. Adoms of Minneapolis-Honeywell Regulator Co., president of the Houston Chapter of the Producers' Council, presided. By definition, curtain wall construction is a system of enclosing a structure with panels manufactured from various types of materials which are fastened to the structural frame and do not support the weight of the building.

Herbert Cowell, TSA-AIA, and Harold Calhoun, TSA-FAIA, both of Houston, participated in the seminar.

It was emphasized throughout the program that curtain wall construction is opening a new era in major construction because it lightens the structure of a building, assuring greater economy in supporting steel costs. Statements that curtain wall construction will provide owners of buildings with more leasable square footage were also emphasized.



At Houston Curtain Wall Seminar

Left to right: Bob Butler, Harold Calhoun, TSA-FAIA, Jim Antill and Herbert Cowell, TSA-AIA.

The new method of curtain wall panel construction was the subject of an all-day seminar for Houston area architects.

ARCHITECTURAL SALESMEN ATTEND FIRST PRODUCERS' COUNCIL SCHOOL AT RPI

The first graduates of a unique five-day training course designed to improve the effectiveness of architectural selling received their diplomas recently at Rensselaer Polytechnic Institute, Troy, New York.

Thirty-seven building products salesmen representing some of the country's largest corporations attended the opening regional session of a nationwide educational program sponsored by The Producers' Council, Inc.—an organization of more than 200 manufacturers and associations in the building industry. Negotiations are underway to hold one of the training courses in Texas.

Under the supervision of Dean Harold D. Hauf and Professor Harry E. Rodman, RPI School of Architecture, the erstwhile students were instructed in a variety of subjects related to developing their abilities in working with architects.

The curriculum included lectures on specification writing, design appreciation, the organization and services of

architectural firms, how to approach the architect, the importance of salesmanship, etc.

Realistic Training Given

The techniques of selling were covered by discussions of the salesman's role as a consultant, timing of sales talks, utilizing product literature and other aids, properly planning sales presentations and staging of effective product meetings.

A highlight of the course was participation by each student in classroom enactments of typical sales situations. This was designed to improve his presentation to architects.

Following the specific lectures usually held in the morning, the afternoon sessions were devoted to discussion groups with individual personal attention given whenever possible. This informal seminar proved to be of great value, an RPI spokesman reported.

"By exposing himself to the comment and criticism of his instructor, the student was able to learn better how to interpret the features of his prod-

uct or service to the architect," he said.

In addition to instructors from the university, a number of leading architects and members of the AIA were invited to serve as guest lecturers. These included Morris Ketchum, Ketchum & Sharp, New York; Benjamin Lane Smith, Voorhess, Walker, Smith & Smith, New York; Walter A. Taylor, Director of Education & Research, AIA, among others. Mr. Smith discussed the practice of architecture, and Mr. Ketchum described design appreciation. Walter Taylor presided over the graduation ceremonies.

INDEX OF ADVERTISERS

Apco-Rubin	13
Artex	Cover IV
Baldwin-Hill	18
A. C. Horn	7
Ideal Millwork	15
Kaiser Fir-Tex	2
Edward Lurie	20
Studios of George L. Payne	19
Portland Cement Assoc.	5
Prescolite Mfg. Co.	19
Soule' Steel Co.	10 & 11
Southern Gas Assn.	1
Southwestern Steel Products	Cover II
Stran Steel Corp.	9
Texas Bitulithic Co.	16
Texas Quarries, Inc.	Cover III
L. R. Ward Steel Products	18

YOUR CLIENTS WILL LIKE

Fashionable, Practical



Glide 'n Fold Doors

IDEAL Glide 'n Fold Door Units consist of four doors, hinged in pairs, an aluminum track, and all hanger hardware. They are made in four widths to fit regular flat-jamb inside door frames in these sizes: 3'0" x 6'8"; 4'0" x 6'8"; 5'0" x 6'8"; and 6'0" x 6'8". Available with louver or 3-raised panel doors of Western Ponderosa Pine, or flush doors in Gum, Birch, or Lauan Mahogany.

Your clients will like these units because they operate so easily and because they give convenient, unrestricted access into closets.

Manufactured in the South's
Largest Standard Millwork Factory
IDEAL COMPANY • WACO, TEXAS



SOLD AT RETAIL LUMBER YARDS

\$600—Billion Building Boom Forecast For Next Decade

A construction boom of "dazzling" proportions which will see building expenditures in the next ten years climb 50 per cent over the past record decade was forecast today by Architectural Forum. The magazine predicted that construction outlays between now and 1967 will amount to a staggering \$600 billion compared with \$409.6 billion from 1948 through 1957.

The \$600 billion figure represents more than the present value of all existing private structures.

Forum's vision of the future, which it terms "fobulous," is based on two studies just completed by the magazine's economic consultant, Miles Callean. One of the surveys covers the probable level of construction activity for the current year. The other is the Forum estimate of building volume for the decade ahead. Taken together, the two studies represent the latest and most comprehensive data available on the building outlook.

Here are some of the factors that

will help make the next ten years this nation's greatest building era, according to Forum: \$200 billion to be spent on residential building alone; \$85 billion on industrial and commercial construction; \$16 billion on religious and private institutional buildings; and \$75 billion on utilities. Outlays for schools and educational facilities will amount to about \$45 billion, while highway spending will total at least \$75 billion, and outlays for sewer and water systems, nearly \$20 billion.

The magazine says that the outlook for building is so "dazzling" that the only "troubling question" is whether the economy can supply the men and materials that will be needed to make the goals attainable.

Bright Year Ahead

As for the immediate future, Forum sees new construction this year climbing nearly 4 per cent above last year's total of \$47.3 billion to a new record of \$49 billion (all data in constant 1957 dollars). This will mark an in-

crease in actual "physical volume." In contrast, the magazine notes, during 1957 dollar volume rose 3 per cent (\$1.2 billion) because of inflation, but physical volume dipped about 1 per cent.

Helped by apartment construction, which, according to Forum, should top 100,000 units this year, housing can now look to a year in which about 1,050,000 new units will be started, compared with the 1-million-or-less units that were forecast last fall and 1957's actual total of 1,039,200.

Beyond this, says Forum, it now seems likely there will be a "slight pickup" in commercial construction, about 4.5 per cent over the autumn forecast, with easier money again responsible.

The magazine also sees added building by privately financed public utilities, now expected to total \$6.2 billion. This extra \$1.2 billion gain in dollar volume will be more than enough to compensate for a bigger dip than previously anticipated in industrial construction.

1958 - 1967

By 1967, says Forum, the annual rate of new construction will have soared to nearly \$70 billion (in 1957



... asphalt
or concrete
... for paving you
can depend on, it's
Texas Bitulithic Co.

50 years of experience in better paving guarantee you that paving by Texas Bitulithic Company is paving you can depend on to last longest. Let one of our salesmen-engineers show you how the skill and experience of the oldest paving contractors in Texas can save you money.

Industrial • Drive-Ins • Streets
Residential • Parking Lots



TEXAS
BITULITHIC COMPANY

dollars), a massive 48 per cent increase above last year. This estimate reflects a substantial addition to the projections that Forum made just a year ago. In recent months, a sweeping revision of government figures for residential additions and alterations, which stemmed from a special study by the Bureau of Labor Statistics, has added about \$2 billion a year to the construction totals for the last few years. Carried forward and applied to each of the years in the next decade, this change has meant a sizable upgrading of estimates. It now appears, says Forum, that close to \$600 billion (1957 dollars) will be spent on new construction during the 1958-1967 decade—nearly \$200 billion, or 50 per cent, more than went into building in the decade 1948-1957, the greatest building-boom period to date.

Business Building

The current slump in industrial and commercial building will soon be forgotten. Despite all the talk of overcapacity, the U. S. today is actually greatly under-equipped to meet the long-range challenges of more people, better living standards, and new production techniques. By 1967, Forum anticipates that the annual rate of factory building will be more than 70 per cent higher than now; commercial construction, which will have to strain to meet the needs of new urban redevelopment, will have increased by 43 per cent.

Residential Construction

By 1967, the number of households in the U. S. will have risen to about 58.2 million. As a result, 1.5 million new housing starts a year will be as common ten years from now as 1 million are today. Apartment construction alone will be running at a rate of 200,000 to 300,000 new units a year (compared with about 100,000 units now). In all, the volume of housing is likely to be nearly 45 per cent greater in 1967 than it is now.

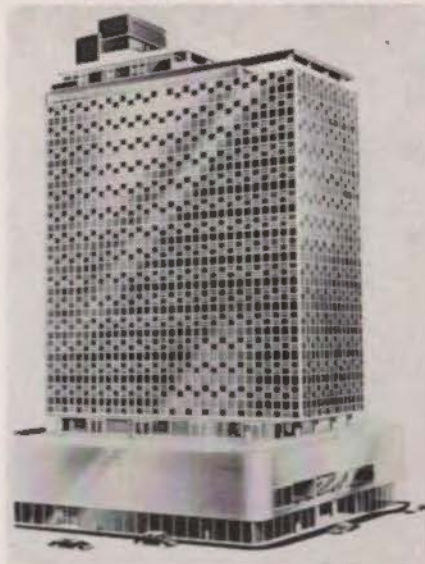
Schools

Ten years from now, the number of young people of school age and college age will have soared from today's 44.8 million to more than 58 million. Educational building will be racing against population growth, and the volume of school construction will be at least 45 per cent greater in 1967 than last year.

Hospitals and Churches

Population growth, rising health standards, and new medical discoveries will add tremendously to required
(Continued on Page 19)

MONTEREY SKYSCRAPER



The Edificio Banco Popular, \$2,000,000 20-story office building now being erected in Monterey, Mexico, will become one of Mexico's largest air-conditioned structures, and its first to be sheathed with "curtain wall" panels. Republic Steel's Truscon Division supplied the porcelainized steel panels, which are bright red in color.

A \$2,000,000 20-story office building now being erected in Monterey will become one of Mexico's largest air-conditioned structures, and its first to be sheathed with "curtain wall" panels of color-finished "porcelainized" steel. The color selected is red.

Appropriately, the steel-clad building will have as its owner and principal occupant Mexico's largest steel firm, Cia Fudidora de Hierro y Acero. The building will take its name, Edificio Banco Popular, from the bank occupying the ground floor. Because Cia Fudidora does not manufacture steel curtain wall, the 1100 insulated steel window panels comprising most of the building's exterior will be supplied by the Truscon Steel Division of Republic Steel Corporation. Republic Steel will also supply the full complement of mullions, copings and facios, all of stainless steel.

Checkerboard Facade

Scheduled to be one of the most spectacularly colorful additions to Monterey's already colorful skyline, the building will be of red porcelainized steel and stainless steel on three sides, and masonry on the fourth side. The porcelainized steel, consisting of four-foot-by-four-foot "Vision-Vent" panels, will be delivered from Youngstown, Ohio, ready for installation, with both inner and outer steel surfaces in place, and Fiberglas insulation within the 1 1/2-inch thickness.

Described as probably the most

modern sky-scraper ever planned for Mexico, Edificio Banco Popular will present a checkerboard facade of glassy red panels, large window areas, and stainless steel to a city already famed for its gay architecture. The red-and-stainless motif will be carried out indoors as well, with stainless abundantly evident in railings, trim, elevator installations, and other details. The architectural firm of Condaminio, S. A., Mexico City, architects for the project, topped the structure with a sumptuously finished "penthouse" containing guest rooms, an observatory, and dining and banquet rooms that overlook Monterey and the country beyond.

According to designers of the building, the choice of curtain wall panels represents a feature at least as unique as the red-and-stainless motif. In a climate accustomed to summertime temperatures running above 110 degrees, the steel panels must provide an insulating barrier between torrid heat without and the air-conditioned atmosphere within. Tests made by the Truscon Division of Republic Steel, it was disclosed, showed that the 1 1/2-inch thickness of the "Vision-Vent" panels, equipped with their Fiberglas insulation, can provide insulating characteristics equal to 12 inches of masonry walls.

90% Weight Saving

Equally important, it was suggested, the use of steel panels instead of masonry will make possible a 90 percent saving in exterior wall weight and a five percent saving in floor space. Thus the curtain wall units weigh a little less than 12 pounds per square foot, compared with more than 100 pounds for the usual thickness of masonry construction. Because masonry walls for this type of building would be eight to ten inches thick, the saving of space, for all 20 floors of the building, adds up to two-thirds of an entire floor in area.

The Truscon "Vision-Vent" panels, of patented design, have the Fiberglas insulation attached to the inside surface of the inner panel; in effect, the insulation becomes the inside of a "sandwich," by shoring that volume with air space that permits expansion and contraction and allows any condensation to escape to the outdoors by way of "weep holes" at the bottoms of each panel.

The individual curtain wall panels are four-foot-by-nine-foot units, containing the insulated porcelain panel and window area within one continuous frame member.

Description of Winners in "Texas Architecture, '57"

Editor's Note: We continue a series on nine winners in the annual statewide competition sponsored by TSA and the Dallas Chapter, AIA—"Texas Architecture—'57." We asked that the winning architects briefly describe the problem which they met and solved in conjunction with each winning project.

Tennwood Employees Club
Hockley, Texas

Texas Architecture, 1957
Award of Merit,
Commercial Category



PROJECT: "TENWOOD" Employees' Club House
LOCATION: Near Hockley, Texas (40 miles northwest of Houston)
OWNER: Tennessee Gas Transmission Company
ARCHITECT: Cowell and Neuhaus, TSA-AIA, Houston
ENGINEER: H. E. Bovay, Jr., Houston
GENERAL CONTRACTOR: Baxter Construction Company, Inc., Houston

The site selected for this building is an attractive, tree-covered point of land bounded on three sides by a lake and adjacent to the golf course and other facilities of Tennessee Gas Transmission Company Employees' Recreational Center. The owner desired to build a swimming pool and a club house to contain a lounge and ballroom, snack bar, limited dining facilities, small kitchen, manager's living quarters, locker rooms and covered terraces. A basement area was requested to house pool filtration equipment, air-conditioning plant and storage area for company use.

A survey of the site revealed clusters of picturesque live oak trees which determined to some extent the location and floor plan for the spreading one-story building. Of steel and wood frame construction, the building makes use of brick, redwood, flagstone and painted wood trim. The part basement is of reinforced concrete while all other floors are concrete slabs on earth fill. Large glass areas in all rooms make possible attractive views of the beautiful rolling countryside surround-

ing the club house. Two covered porches which overlook the swimming pool, provide for recreational activities.

Main Lounge Sound-Equipped

The main lounge, used for dances and special parties, is equipped with built-in sound equipment. Ceilings are of acoustical plaster and the lounge floor is oak. A large wood-burning fireplace serves as a divider between lounge and entrance hall. Polished crab orchard flagstone floors were used for entrance hall and dining grille. The architects assisted the owner in selection of all furnishings.

Locker and dressing rooms for men and women golfers and swimmers receive ample light and air from windows set high on the wall for privacy.

The swimming pool, of regulation A.A.U. dimensions, is equipped with both one and three-meter diving boards. Of reinforced concrete construction, the pool has cement plaster finish and is trimmed with blue-green ceramic tile. A spacious cement finish terrace surrounds the pool and is bordered by grass and planting areas.

NEW....
Technical
Catalog —
Ready
for You

Full Information
on complete line
of B-H

Spun Mineral Wool
BUILDING INSULATIONS
Write for your copy

BALDWIN-HILL
P. O. Box 13, Temple, Texas



**L. R. WARD
STEEL PRODUCTS CO.**

SALES • ENGINEERING • STOCKING

- ★ UNISTRUT METAL FRAMING—MATERIALS
- ★ UNISTRUT SYSTEM—MOVABLE PARTITIONS
- ★ WARCO WALL—MOVABLE PARTITIONS
- ★ GRIP-STRUT—SAFETY GRATING
- ★ GOLD NUGGET—WELDED BAR GRATING
- ★ GLOBE TRAY—CABLE RACEWAYS
- ★ CABLE-STRUT—CABLE & TUBING RACEWAYS

DALLAS 3009 Canton
RI 1-4270

HOUSTON 3405 Polk
CA 5-0354

WRITE FOR CATALOGS



(Continued from Page 17)

outlays for hospitals and research centers. Spending for this purpose, which was less than \$850 million in 1957, will be more than \$1.6 billion in 1967. Meanwhile, church building will continue to boom.

Highways

At the end of the coming decade, annual outlays for highway and street construction will still be rising, even though the spending rate, now \$4.8 billion a year, will have topped \$9 billion (exclusive of right-of-way costs). The multiple effects of this unparalleled expansion in highway construction can hardly be overestimated. Every aspect of urban life will feel its impact. The road building program has the power both to intensify the suburban shift and to restore the balance between the close-in and outlying divisions of the metropolitan area. It is likely to do some of both.

Golden Decade

The statistical assumptions underlying its ten-year forecast are exceedingly "conservative"—assuming that the coming decade will be free of war and serious depression, the magazine says. Farum has "no fear" that its estimates are too optimistic. They are based on projections of statistics that understate the actual volume of construction today (e.g., further adjustments will probably have to be made in the estimates for new dwelling units as a result of the Census Bureau's 1956 housing inventory, which has just been published.) Beyond this, the estimates are also conservative in that they assume that the American standard of living—i.e., productivity—will rise no faster during the next decade than during the last one. They also assume that construction's contribution to gross national product (GNP: the total value of all goods and services produced in the U. S.) will be only slightly larger in the next ten years than in the last ten.

More specifically, Farum's construction projections for the coming decade are based on an estimate of future gross national product per capita multiplied by future population estimates. They suppose that the increase in per capita GNP will be at a compound rate of about 1.85 per cent a year, which is roughly the average for the postwar period. In addition, they assume that construction's share of total GNP will be only 11.5 per cent in 1967, a slice which is a bare 0.6 percentage points greater than today.

As Forum reported a year ago, the

Structural City Products Traveling Shows Seen In Dallas, Houston

The nation's manufacturers of brick, structural tile and architectural terra cotta launched their largest program of traveling industrial shows in Philadelphia in February. One show, named "The Hard Sell," is a sales meeting for brick and tile salesmen. The other, titled "Merchandising Magic With Brick," is a special presentation for local home builder groups. Both shows will travel a total of 12,000 miles on a six-week tour of 18 cities. They were seen in Houston February 18, and in Dallas the following day.

The sales conventions are presented by the regional associations of the Structural Clay Products Institute in cooperation with the national SCPI organization. Sponsorship of the home builder shows varies in individual cities, but generally they are presented by local clay products manufacturers and sales outlets.

Although the brick and tile industry has been presenting national sales conventions for five years, "The Hard Sell" is by far the most elaborate program it has yet sent on the road.

Emphasis in the sales meetings is on bringing the brick and tile salesman up-to-date on the latest engineering, research and promotional developments in the clay products field. Subject matter in "The Hard Sell" includes information on curtain wall construction, market studies and reinforced brick masonry.

dominant force in future construction will be the need for continually improving and expanding the nation's capital plant. There will be not only a fairly steady climb in the amount of industrial and commercial building, but also tremendous additions to utility capacity to serve a market that by 1967 will add up to nearly 200 million people. By the same token, population increases will force an expansion of public facilities—highways, sewers, schools, hospitals, airports, etc. Practically every segment of the building industry will feel the impact of this vigorous growth.

With such auspicious prospects as these for the decade as a whole, the architectural profession and the construction industry should be able to take in stride the occasional years when expansion may falter, Forum said.

FOR SWIVEL LIGHTS

PRESCOLITE IS PREFERRED

HERE'S WHY...

EXCLUSIVE "DieLux"
DIECAST CONSTRUCTION



Heavy duty
swivels
holds
tension
indefinitely

9 beautiful
finishes to
choose from

A-14

Choice of metal cones; or Fabriglas cones, with embedded maple leaves, ferns, or rattan. (Also available in white.)

WRITE FOR OUR CATALOG

PRESCOLITE MANUFACTURING CORP.

2229 4th St., Berkeley 10, Calif.
Easton Road, Neshaminy, Penna.

FRENCH MOSAIC STAINED GLASS



designed by
Pierre
Millous,
produced in our studios in Chartres, France.

Contemporary windows and walls
of incredible color with this glass...
1" thick, set in reinforced cement.

Samples of glass on request.

The Studios of George L. **PAYNE**
American Address: 15 Prince Street, Paterson 3, N. J.

NEW PRODUCTS

A new system of skylighting which "selects" only the most desirable rays of sunlight the year 'round has been developed for residential and light commercial use by Kimble Glass Company, subsidiary of Owens-Illinois Glass Company.

Known as 2x2 Toplite (four prismatic glass units set in an aluminum frame measuring approximately two feet by two feet), the new skylight system is a prefabricated, individually packaged unit delivered to the job-site ready for immediate installation into prepared roof openings.

Toplite is said to be the only functional skylighting unit on the market and the only one that works with the sun. Its aluminum perimeter holds scientifically-designed prismatic glass units sealed with a Thiokol-base material for maximum weather protection. Easy and quick roof installation is provided by flange-perimeter construction. Toplite hugs the roof, being only about three inches high, making it practically unseen from street level. It reduces solar heat transmission during summer months and possesses an insulation factor more than twice that of an ordinary single-glazed skylight.

Toplite does not "spotlight the sun." Instead it diffuses daylight without glare and excessive solar heat. Toplite prisms work with the sun, transmitting north light all year long, admitting low-angle sun, but reflecting and re-

jecting direct hot summer sun.

★ ★ ★

Wood has been added to aluminum to create a new concept in aluminum railing design. Blumcraft of Pittsburgh has combined the warmth and elegance of natural-finished wood with the structure of aluminum to develop their new post style #170.

A choice of select birch or American walnut trim is available to the Architect to relate the railing design to the surrounding decor and color. The wood-trimmed post will be furnished to the metal fabricator in rubbed-satin finish. All of the Blumcraft adjustable features are contained in this post, which can be used with any of the stock handrail shapes.

Blumcraft railings have been well received by architects throughout the western hemisphere for all types of structures. By making their components available to all metal fabricators, Blumcraft has provided the architect with the element of competitive bidding that is required for public projects as well as for private work.

John Knox Shear, AIA,
Editor and Architect,
Dead in Tragic Accident

Architects over the nation were saddened to hear of the tragic death of John Knox Shear, AIA, editor of the ARCHITECTURAL RECORD. He died January 9 at his Connecticut home after an accidental fall. Mr. Shear, 40, had appeared on the TSA convention program at Dallas last November, and was a frequent speaker, moderator, and seminar participant.

A graduate of Carnegie Institute of Technology and Princeton University, Mr. Shear had returned to the former institution as professor of architecture and head of the department of architecture from 1949-55. He went from this post to that of editor of the ARCHITECTURAL RECORD. A speaker and writer of great wit and ability, he was widely known among architects over the nation, and was a personal friend of many members of TSA.

According to business associates, Mr. Shear was recuperating from an attack of influenza when he fainted and fell at his home.

Wanted—Architectural Assistant

This position is with The University of Texas System, with headquarters in the Office of the Comptroller at Austin, Texas. Beginning salary: from \$404.00 a month to \$467.00 a month. This position involves doing architectural work, part of which might be classed as sub-professional, in connection with new building construction and repair or remodeling projects, under close supervision of Mr. Walter C. Moore, Registered Architect and Assistant to the Comptroller, such as: assisting in planning, preparing and/or checking plans and specifications and occasionally inspecting construction work, furniture and equipment, etc. 85% to 90% of the work will be done in Austin, but occasionally trips will be made to our branches at Galveston, Houston, Dallas, and El Paso.

Under current rules of the Texas Board of Architectural Examiners, experience in this position can be counted toward registration up to 18 months. Applicant should either be a Registered Architect or be in a position to be registered within the next two or three years.

For additional information and application blanks, please contact Charles H. Sparenberg, Comptroller, The University of Texas, Austin, Texas.



**CUCKOO
CLOCKS**

from the Black Forest. Calling "Cuckoo" every 1/4 hour. In beautiful colors, lovely for children's room. 7 1/2" high. Boy & Girl Clock — \$6.95

Birdnest Clock, enchanting, will also be beautiful in a kitchen. 7" high. Bird in moving motion. Birdnest Clock — \$6.95

ED LURIE

67 Warren St. [TA-1] Roxbury, Mass.

let the distinctive
beauty

Decorative, subtly colorful Cordova Shell Limestone provides a unique opportunity to give warm, *natural* beauty its own distinctive place in the finest of contemporary interiors. Where dignity or serenity must be



Baxter Laboratories, Morton Grove, Illinois
Friedman, Alschuler & Sincere, Architects

of that interior
begin with

CORDOVA

Shell
Limestone

expressed, Cordova Shell can be the perfect background for the dominant décor. It is unobtrusive but never uninteresting, for nature has sculptured this unusual stone with a changing pattern of shell and shell fragments.

Or, if informality or simplicity is the note . . . Cordova Shell can dominate the decorative effect with its random, casual charm of texture and tint. The creamy color deepens in the shell imprints to a richly amber tone . . . and light creates a fascinating shadow play.

Fabrics, colors, finishes and surfaces all seem to find new decorative qualities in harmony with Cordova Shell. And, for another measure of design freedom, its enduring beauty is just as practical for exteriors . . . for commercial, institutional or residential buildings.

We will be glad to send you
samples, detailed information and
beautiful color showings of
Cordova Shell Limestone . . . at
your request.

TEXAS QUARRIES, Inc.

P. O. Box 91
Austin, Texas

TEXAS ARCHITECT
Box 1733
FORT WORTH, TEXAS
Form 3547 Requested

Section 34.66 P. L. & R.
U. S. POSTAGE
PAID
FORT WORTH, TEXAS
PERMIT No 2037

"Preferred by Contractors, Specified by Architects!"

ARTEX CURTAIN WALLS

Specified on the...

Houston - Urban Expressways Building



- Building: Houston-Urban Expressways Office Bldg.
- Location: Houston, Texas
- Architect: David C. Baer
- Contractors: Marco Construction Co.

To meet the demands of modern American architectural requirements, ARTEX Curtain and Panel Walls fulfill every specification. Commercial, industrial and institutional structures call for precision manufactured curtain and panel walls of the highest quality. ARTEX more than meets these standards. Complete information and consultation are available when you specify ARTEX.

Engineering, production and design are integral components of an ARTEX specified job. Demand ARTEX Curtain and Panel Walls on your next project — regardless of the size or type of building.

ARTEX

A Division of Arnold Altex Aluminum Company

6721 N. W. 36 AVENUE

• MIAMI, FLORIDA

125 INDUSTRIAL ROAD

• SUMMERVILLE, S. C.