



Official Publication of

The Texas Society of Architects

TSA is the official organization of the Texas Region of the American Institution of Architects

James D. Pfluger, AIA Editor
Taber Ward Managing Editor
Benny L. Canizaro Associate Editor
V. Raymond Smith, AIA Associate Editor

THE TEXAS ARCHITECT is published monthly by Texas Society of Architects, 904 Perry-Brooks Building, 121 East 8th Street, Austin, Texas 78701. Second class postage paid at Austin, Texas. Application to mail at second class postage rates is pending at Austin, Texas. Copyrighted 1972 by the TSA. Subscription price, \$3.00 per year, in advance.

Editorial contributions, correspondence, and advertising material invited by the editor. Due to the nature of the publication, editorial contributions cannot be purchased. Publisher gives permission for reproduction of all or part of editorial material herein, and requests publication credit be given THE TEXAS ARCHITECT, and author of material when indicated. Publications which normally pay for editorial material are requested to give consideration to the author of reproduced bylined feature material.

Appearance of names and pictures of products and services in either editorial or advertising does not constitute an endorsement of same by either the Texas Society of Architects or the American Institution of Architects.

TSA OFFICERS FOR 1972

Preston M. Geren Jr., Fort Worth .. President
Jay W. Barnes, Austin .. President
Elect
Ben E. Brewer, Houston .. Vice President
Charles Harper, Wichita Falls .. Vice President
John Olson, Corpus Christi .. Vice President
Howard Parker, Dallas .. Secretary-Treasurer
Daniel Boone, Abilene AIA Regional Director
Thomas A. Bullock, Houston .. Past President
Don Edward Legge, Austin .. Executive Director

TSA DIRECTORS FOR 1972

Richard Buzard .. Abilene Chapter
Dave Graeber .. Austin Chapter
M. O. Lawrence .. Brazos Chapter
Jack Solka .. Corpus Christi Chapter
Dave Braden .. Dallas Chapter
George Staten .. El Paso Chapter
Paul Wharton .. Fort Worth Chapter
Harry Golemon .. Houston Chapter
Marvin Boland .. Lower Rio Grand Valley Chapter
Bob Messersmith .. Lubbock Chapter
Ann Bintliff .. Northeast Texas Chapter
Ed Mok .. San Antonio Chapter
Harry W. Golemon .. Southeast Texas Chapter
Jim Bailey .. Panhandle Chapter
Douglas Hearn .. Waco Chapter
Daryle Hohertz .. West Texas Chapter
Joe Roberts .. Wichita Falls Chapter
Tony Balderrama .. Associated Student Chapters/AIA Houston



THE TEXAS ARCHITECT

VOLUME 22/JUNE, 1972/NO. 6

INDEX

COVER AND PAGE 3

An old farm house is expanded into a sensitive and complex country home. From the beginning, the architect's design intent was approached with the spirit of mannerism; the element of surprise, the distortion of perspective and the interaction of interior and exterior space.

PAGE 6

The air gateway to Abilene, Texas is a bold concrete and glass terminal building that utilizes multi levels to separate arriving and departing traffic.

PAGE 9

Restoration of Cumberland Hill School in Dallas for SEDCO, INC. has brought awards from American Association for State and Local History, Texas Society of Architects, Dallas Chapter AIA and Dallas Beautification.

PAGE 15

Rice University has a new residential college which includes accommodations that are more than just "living quarters" — an educational life style conducive to mixing and intermingling students with different fields of study.



PAGE 19

A three-story "student street" encourages communications between students and faculty of all academic disciplines at Sauk Valley College.

ADVERTISERS

p. 8 — Mid-States Steel & Wire
p. 13 — Coerver Industries
p. 14 — Texas Gas Utilities
p. 17 — Moncrief-Lenoir Mfg. Co.
p. 18 — Kirby Building Building Systems
p. 21 — Walter deLima Meyers
p. 21 — Professional Directory
p. 22 — Arcrete
p. 22 — Josam Mfg. Co.
p. 23 — St. Charles Mfg. Co.

MCCORMICK COUNTRY HOUSE



**The Firm of
W. Irving Phillips, Jr., AIA
Robert W. Peterson, AIA**

Architects were asked to design a plan to a country vacation home utilizing an existing deteriorating "salt box" farmhouse. Additions were to include two bedrooms, a bath, maid's room and entrance hall. The existing house was to be expanded to include a new living and dining area, kitchen, master bedroom and bath. A new garage was also to be added.

The house is approached off axis; as one proceeds down the drive, he becomes aware of a very classical organization of building locations. Seemingly, at first glance, there is a complex of three farm buildings, all with hip roofs and batten siding characteristic of nineteenth century Texas farms. There is a forecourt which defines the entrance to the main house.

There are two clues in the approach to the house that suggest that something is not quite typical about this little farm complex. For one thing, as one gets closer, he notices that what he first thought was a third building, is actually a wall, which seems to penetrate into the form of the main house.

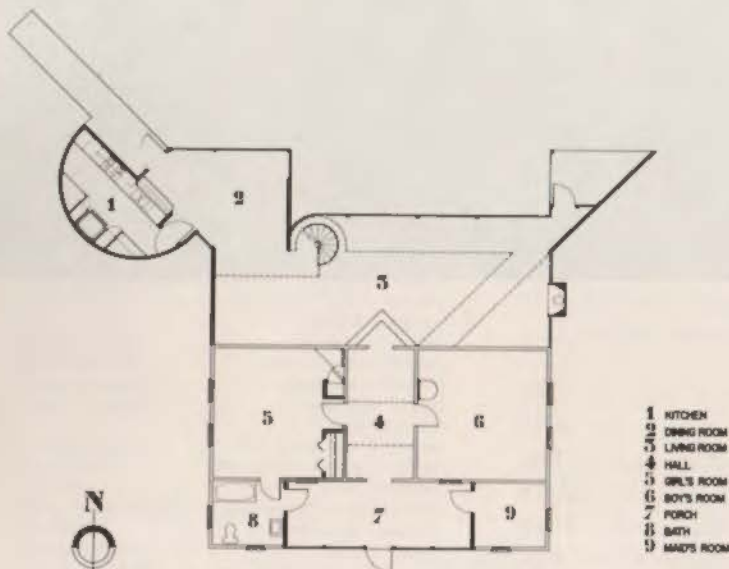
Upon entering, things begin to happen. The traditional breezeway through the central axis of the house is a much more open space than one would expect: the ceiling is cut open to bring in more light, and to refocus the direction toward a very normal-sized door opening at the center of what was the back wall of a typical Texas farmhouse.

Through that door is an incredible change of form and space; an almost obsessive dedication to preserving the view of the lake, trees and hills; and yet a surprising reaffirmation of the qualities and characteristics of the original farmhouse. The form of the addition to the house is generated from one precise vantage point at that door, a plan defined by 45 degree axial views describing the extremities of each end of the lake, and thus, cupping and framing the picturesque view of the countryside.

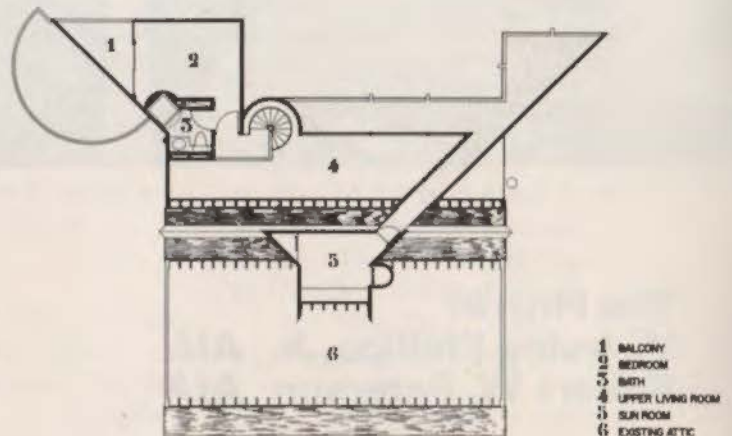
The new form of the house intentionally distorts perspective, in order to provide interest, challenge, and a sense of extravagance. From the outside, certain views of the house seem to present a cubistic representation of reality. The use of the diagonal (the 45 degree angle), the slope of the roof, and the interpenetration of surfaces collaborate to present a picture that suggests that the normal way of seeing has been tampered with.

For the same logic that manneristic devices have been used in the house to provide the element of surprise, and synthesize historical form types, so have cubistic devices been used to create dissonance and complexity by distorting and mixing spacial locations and temporal dates.

For the sake of interest, challenge, thought, and satisfaction, the house is appropriately complex for the excitement of the activity of life itself. The interplay of new and old forms as seen from multiple points of view create an incredible sense of awareness of a new kind of environment which seemingly abstracts itself from the everyday temporal sequence, and demands readjustment on the part of the beholder.



FIRST FLOOR PLAN



SECOND FLOOR PLAN

FRONT VIEW



LIVING ROOM

BEDROOM



REAR VIEW

TEXAS ARCHITECTURE
COMMENDATION AWARD

ABILENE AIR TERMINAL

TITTLE, LUTHER, LOVING & LEE - ARCHITECTS





Problem presented to the architect was to design a commuter type air terminal for a growing West Texas city with a positive separation of the following functions:

- Enplaning passengers
- Deplaning passengers
- Baggage and freight

Client's request for three separate areas was justified by research of past, present and future needs which indicated:

- No layovers between flights (common lobby not needed)
- Passengers are either leaving or arriving in the city
- Excessive amounts of freight due to local industrial plants


A two-story structure was selected with enplaning facilities on the top level and deplaning facilities and freight at the lower. Solution separates traffic and congestion, reduces walking distance for enplaning and deplaning passengers, and eases the handling of freight and baggage.

This initial unit can accommodate up to three airlines. For further expansion, similar units will be added to the east and each unit will become a separate terminal although physically connected.

Exterior materials include sandblasted concrete, solar bronze glass with neoprene gaskets, and aluminum with statuary bronze finish.

Interiors are sandblasted concrete, terrazzo flooring, vinyl fabric wall covering, and acoustical plaster ceilings.

Construction is a reinforced and prestressed concrete frame with drywall partitions and a built-up roof.



Reinforcing with 300% more gripping power


STRONGWALL

Stick-to-it-ness! That's what MidSTATES puts into its ladder-type Strongwall reinforcing to help it grab hold of the mortar better. And it does it in four important ways:

- 1** Knurled side rods bite into mortar on all four sides for a better bond.
- 2** Crossbars welded over the side rods mean mortar flows all around—top, bottom and sides.
- 3** Deformed side rods with 10 degree bends can not slide in mortar.
- 4** Crossbar is extended $\frac{1}{8}$ " over side rods. Stress is evenly distributed across weld at critical stress point—the joint.

The tensile strength of Strongwall reinforcing exceeds 90,000 P.S.I. after knurling and deforming. Galvanized or Brite Basic finishes. Available in 10-foot sections with crossbars 15" on center or 12-foot sections with crossbars 16" on center. Also available in truss design.

Packaged and palletized to save loading and handling time at the construction site, Strongwall is protected by patented corrugated "boots". Arrives in perfect condition. Protects workmen too.



Write for free Strongwall Brochure and complete specifications, both ladder and truss type reinforcing.

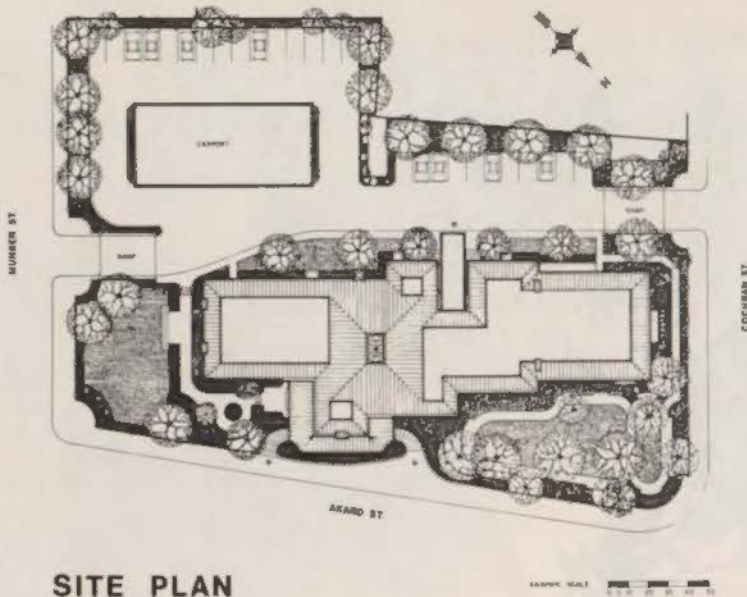


MIDSTATES WIRE

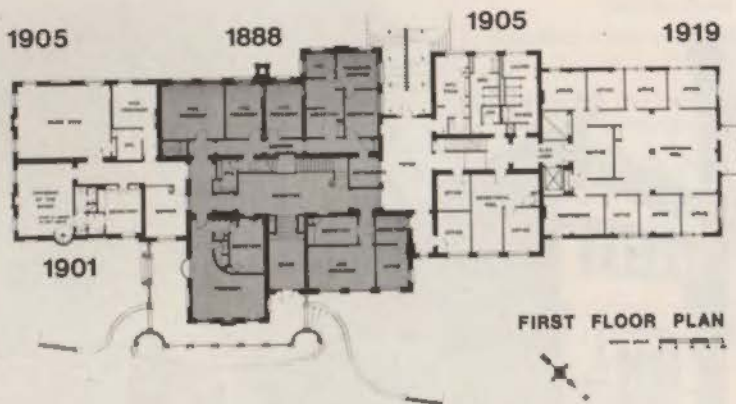
MID-STATES STEEL and WIRE Sherman, Texas
Division of Keystone Consolidated Industries, Inc.



REMODEL OF THE CUMBERLAND HILL SCHOOL



SITE PLAN



FIRST FLOOR PLAN

ORIGINAL FACADE



Architects were commissioned to restore the oldest existing brick school building in Dallas County for use as headquarters for an international off-shore drilling, pipeline and engineering corporation.

The major architectural challenge was to unify and restore the original character of a building that had been remodeled and added to several times.

Secondary challenge was to solve the functions of a contemporary office building within the limitations of a load-bearing masonry building designed for school usage.

This was not an exact restoration but rather a unifying effort in the spirit and character of the Texas Victorian era which produced the original building. The intent was to preserve the best qualities of the existing structure while unifying the various remodelings and additions.

The standing seam roof and cupola were constructed to emulate the dominant architectural feature of the original building and to help unify it into one structure. The unification was completed by painting the several different colors of brick one color, the use of ornamental ironwork, and landscape design.

Interior of the building was completely remodeled into offices with a two story open well and grand stair forming the focal point of the interior.

Located within the central business district of Dallas, the building is a major anchor point for green space in the Poiti Plan as well as a link to the architectural heritage of Dallas.

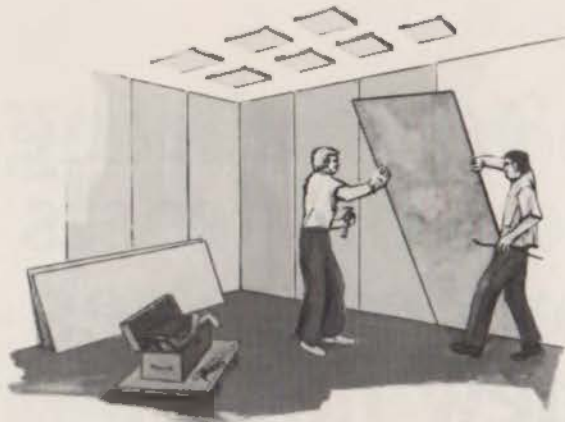




REMODEL OF THE CUMBERLAND
HILL SCHOOL FOR SEDCO, INC.

BURSON, HENDRICKS & ASSOCIATES
ARCHITECTS
DALLAS, TEXAS





ARCHITECTURAL WOODWORK BY COERVER ADDS WELCOME WARMTH TO ALL INTERIORS.

*Like
American Airlines'
lounge will be at the
new Dallas-Ft. Worth
airport.*

Over 14,000 sq. ft. of beautiful plastic laminate wall paneling and the wooden hand rails are being installed by Coerver Industries. American Airlines is just one of many such distinctive interiors Coerver is fabricating and installing from Boston to L.A.

Be it a bank, board room, hotel lobby, restaurant, airport lounge, choir loft, or private box at Texas Stadium, a person is aware of a subtle warmth and beauty of architectural woodwork by Coerver — difficult to describe, but definitely there. It is the result of the patience and skill of the Coerver Craftsmen who put pride of workmanship above all else.



COERVER INDUSTRIES, INC.

3311 ELM STREET / DALLAS, TEXAS 75226 / (214) 744-5211

Are you building high operating costs into someone else's new home?

**An all-gas Blue Star home
means low energy bills and
a lot less maintenance!**

That's a powerful sales point to make! The combination of modern gas heating, air conditioning, cooking, water heating and yard lighting saves the homeowner thousands of dollars over the period of his mortgage. Hotels, motels, schools and office buildings also benefit when gas energy is included in the plans. Gas economy and reliability . . . two big sales appeal features that can work for you!



TEXAS ARCHITECTURE 1971
AWARD OF MERIT

SID W. RICHARDSON COLLEGE

RICE UNIVERSITY, HOUSTON

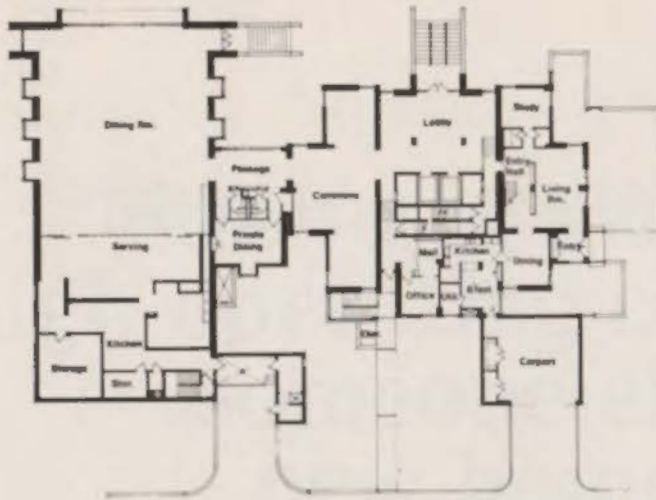
NEUHAUS + TAYLOR / ARCHITECTS & PLANNING CONSULTANTS



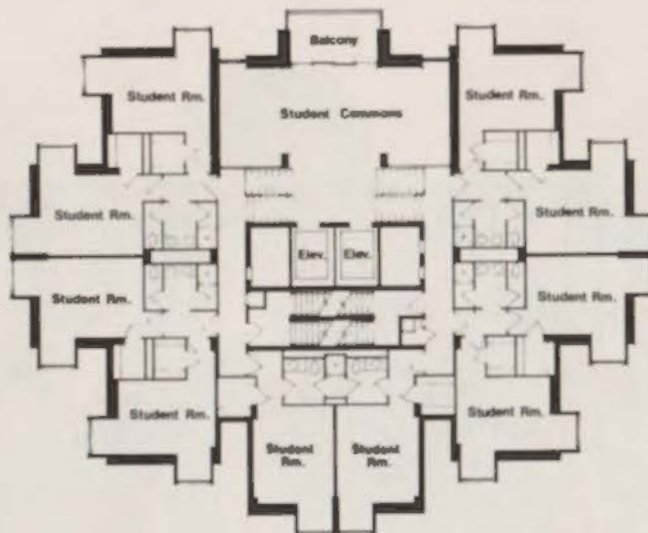
photo by Frank Lotz Miller



photo by Richard Payne



GROUND FLOOR PLAN



TYPICAL FLOOR PLAN



photo by Frank Lotz Miller

The client required a residential college providing living quarters for approximately 220 students, dining facilities, recreational areas and master's residence. The site was selected for proximity to the academic classroom area and other men's colleges on the existing campus. Client suggested a high-rise solution due to the rapidly dwindling land supply. However, doubts were expressed as to the ability to maintain individual identity and human qualities of residential quarters in a high-rise solution.

Architectural continuity with the existing campus buildings was also required. More than just "living quarters," the residential college should provide a life style conducive to mixing and intermingling of university students with different fields of study. Public areas could enhance this mixture but the identity of the individual and his private quarters should not be violated.

An existing alley of trees was utilized with the tower becoming a focal point at the end of the vista. The dining hall is also centered to focus the view down the alley and back to the campus. Student lounges at each split level elevator landing provide the required group gathering areas. Student rooms have two exposures and complete privacy with double doors separating the individual's living quarters from public areas. The master's residence is incorporated in the two lower levels, as are common areas, lounges and the dining facility.

Structure is concrete frame with flat slab construction and precast concrete window boxes. Masonry is typical of all campus buildings. The total area of the building is 89,170 square feet and the construction cost was \$1,950,000.

The day Deputy Matt McCloud turned in his badge, he helped uncover a great idea.



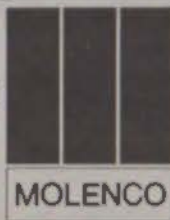
An idea that's caught on in a big way over the years.

Today, we all know it as perforated metal. It's made in just about as many configurations as there are ways to use it. And that's plenty.

From commercial applications like radio and TV ventilating panels, to strong, protective guards for machinery.

Then, there are ornamental uses. Hundreds of them. From room dividers and fireplace screens to metal furniture.

But you probably know all about perforated metals.



What you may not know is where to get them.

And, that's where MOLENCO comes in.

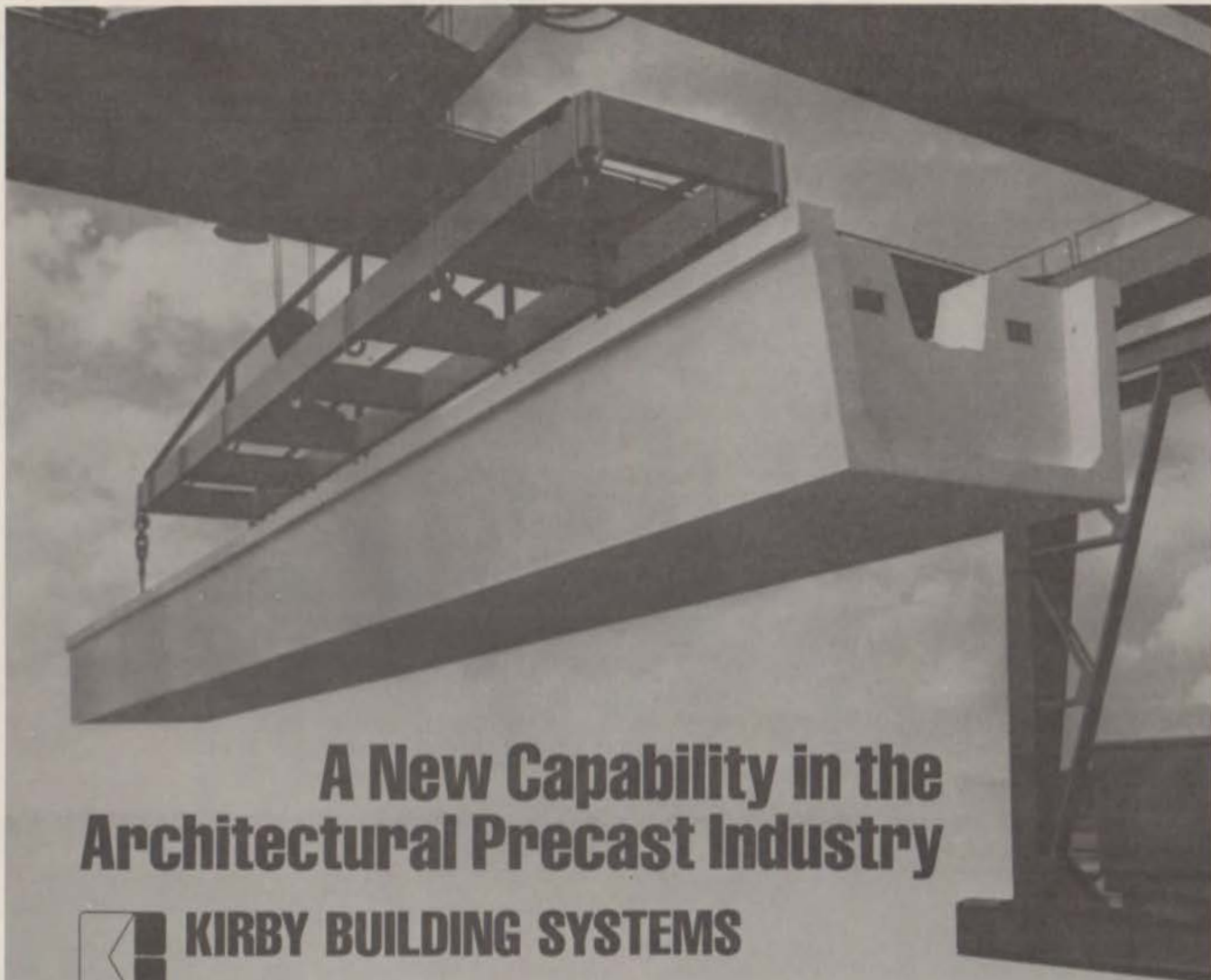
We're the only major distributor in this area.

In addition, we also have large, full-time stocks of expanded metals.

If you'd like to place an order, or need more information, give us a call.

In the meantime, our hat's off to that great inventor, Deputy Matt McCloud.

Moncrief-Lenoir Manufacturing Company
2103 Lyons Avenue, P.O. Box 2505, Houston, Texas 77001. (713) 225-1441
With branches in Dallas, San Antonio, Lubbock, Temple, Harlingen.



A New Capability in the Architectural Precast Industry



KIRBY BUILDING SYSTEMS

Those gleaming white concrete panels—destined for the 40-story Dresser Tower now being built in downtown Houston—are part of the first job being done by the newest force in the Southwest's architectural precast industry... Kirby Building Systems.

Operating from this new, \$1 million plant located just west of Houston in Katy, Texas, we utilize the most modern and efficient precast equipment and technology to produce panels of outstanding strength, sharp definition and design faithfulness—in a wide range of finishes and shapes.



KIRBY BUILDING SYSTEMS, INC.

With a 15-year background in systems engineering, manufacturing and construction to draw from, we now offer you the ideal combination of a superior precast architectural product, competitive prices... and dependable delivery.

A visit to our plant—and inspection of our product—will convince you of the validity of the Kirby motto: "Committed to Excellence."

For additional information, please contact Charles Madeley or Charles White at Kirby Building Systems, Inc., P.O. Box 36429, Houston, Texas 77036. Phone: (713)666-1946.

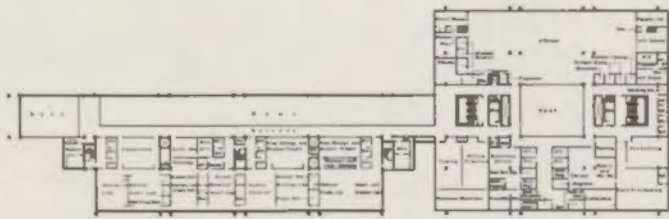
TEXAS ARCHITECTURE 1971
COMMENDATION AWARD

SAUK VALLEY COLLEGE

STERLING, ILLINOIS

CAUDILL ROWLETT SCOTT / ARCHITECTS AND PLANNERS

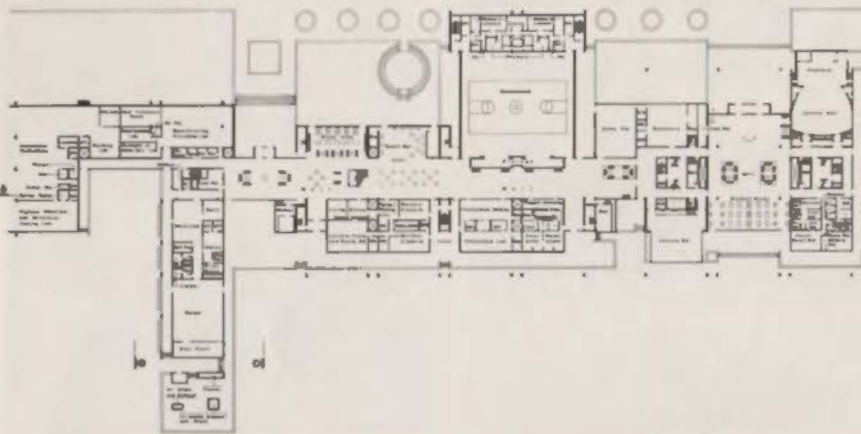




THIRD FLOOR PLAN



SECOND FLOOR PLAN



FIRST FLOOR PLAN

photo by Bill Hedrich



Equal status for all academic disciplines, free and easy communication between faculty and students — combined with the severe winter climate — were the chief influences in placing the physical facilities of this community college inside a single structure. The site — a square parcel of open farmland bounded by a highway on the north and by a river on the south — led to a linear building form facing the river.

The building is arranged around a 40' wide, three-story central mall or "student street." This responds to the educational, social and economic requirements of the program. The mall includes lounge areas, informal study space, a snack bar, a bookstore and academic display areas, thereby providing a congenial mix of social and academic activity throughout the college. All disciplines have direct access to the mall, so that students identify with the college as a whole, rather than with an isolated department.

Structure is reinforced concrete with 60 ft. long post-tensioned concrete joists supported by pairs of girders. Exterior materials are exposed sand-blasted concrete, reddish brown brick and bronzed glass.

Walter deLima Meyers

PHOTOGRAPHS FOR ARCHITECTS

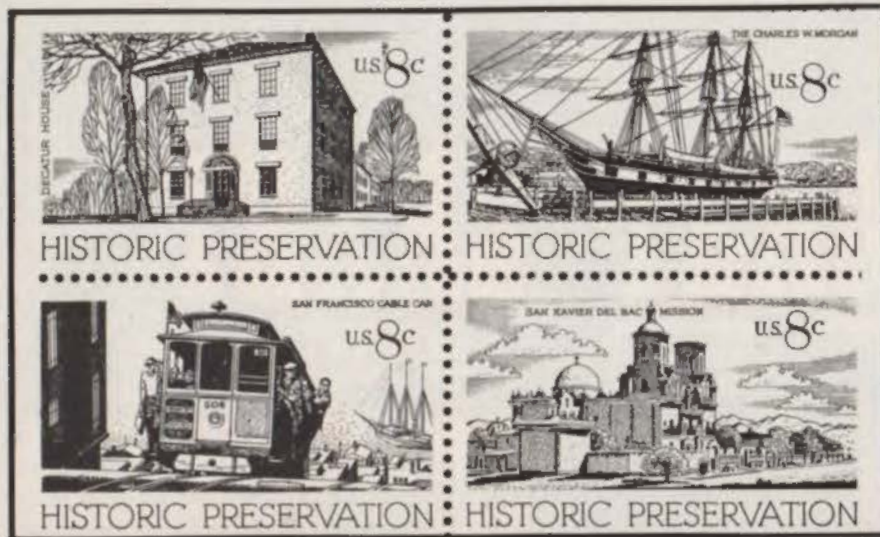
... and your clients!
Award-winning examples are available to you.
Just contact me (Walter deLima Meyers) at
3007 Mahanna Springs Dr., Dallas, Texas 75235.
Phone: 214 747-2557 or 528-7436

WHITE HEADS AUSTIN HERITAGE SOCIETY

J. Roy White of Austin, a partner in the architectural firm of Brooks, Barr, Graeber and White, has been elected president of the Austin Heritage Society. He has been active in the Society as first vice president.

Long interested in Austin restoration and preservation projects, White is the author of a book, *Limestone and Logs*.

Wolf Jessen AIA was named a director and Wayne Bell AIA was named to the Heritage Society's Advisory Board.



PROFESSIONAL DIRECTORY

MND MYRICK · NEWMAN · DAHLBERG, INC. LANDSCAPE ARCHITECTS · PLANNERS

2909 LEMMON AVE. • DALLAS, TEXAS 75204 • 214/528-9400
AMERICAN SOCIETY OF LANDSCAPE ARCHITECTS



TRAFFIC ENGINEERS, INC.

JOHN W. HUDSON JR., P.E.
PRESIDENT

2023 Park St., Houston, Texas 77019
Phone 713-523-8165

CONSTRUCTION COST CONSULTANTS

Construction Consultants with complete series of Computer Programs for Cost Control.
Feasibility Studies from automated Historical Files to completely detailed Bid Preparation.
Cost Analysis and Disbursement Supervision services for lending agencies.

Cost Systems Engineers, Inc. 825-1177
4907 Ohio Garden Road Fort Worth, Texas



Chas Barabas, Jr. P. E.

TRAVIS ASSOCIATES
CONSULTING ENGINEERS
CIVIL · STRUCTURAL · MECHANICAL · ELECTRICAL
AUSTIN DALLAS EL PASO

2130 Goodrich
P. O. Box 2231

Austin, Texas 78764
512-441-4861

B. RAE NESMITH

Senator John Tower, R-Texas, has announced the appointment of B. Rea Nesmith of El Paso to serve a two-year term as a member of the National Public Advisory Panel on Architectural Services.

Function of the panel is to provide advice and recommendations to the General Services Administration that will promote high standards of architectural excellence in the design and construction of federal buildings.

Nesmith is head of a firm providing architectural, planning and engineering services. He is a graduate of Texas Tech University and has practiced in El Paso and the Southwest for the past 20 years.

Besides membership in the Texas Society of Architects and the American Institute of Architects, Nesmith is a member of the Texas and National Societies of Professional Engineers and the Construction Specifications Institute.

Have You Checked?
TSA's
GROUP
MEDICAL
INSURANCE

for brochure write:

RATHMELL & COMPANY
2701 Louisiana
Houston, Texas 77006

for information on a
listing in the —
PROFESSIONAL DIRECTORY

contact:

MANAGING EDITOR
THE TEXAS ARCHITECT
904 Perry-Brooks Bldg.
Austin, Texas 78701



TEXAS
ARCHITECTURAL
FOUNDATION

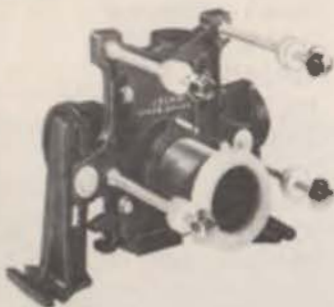
904 Perry-Brooks Building
Austin

The Texas
Architectural Foundation
offers scholarships
in architectural education
and sponsors research
in the profession.

Contributions may be
made as memorials:
a remembrance with
purpose and dignity.

JOSAM

**"chase-saver"
gets it all in**



Now . . . to fit the narrowest space requirements, use the Josam "Chase-Saver" Carrier. A new face plate, lock nut, adjustable extension, gripited asbestos gasket all come factory assembled with Uniflon fitting. Carrier and fitting can fit in space 8" from centerline of fitting to finish wall. Buttress foot, bowl stabilizer washers, "No-Sleep" feature gasket and many other features. Everything a closet carrier should be — and then some!

DISTRICT REPRESENTATIVES

Arnold-Lansden & Associates
510 Shepherd Drive P. O. Box 7846
Houston, Texas 77007
Phone: 713 - 864-7733

Dillard Associates
110 Manufacturing Street Dallas, Texas 75207
Phone: 214 - 748-7708

JOSAM MANUFACTURING CO.
• Michigan City, Indiana 46360

BILLBOARDS

In California, an Environmental Enrichment Award was presented to the Atlantic Richfield Company in recognition of the firm's decision not to renew contracts for some 1000 billboards across the nation.

The award was presented by the Southern California Chapter of the American Institute of Architects.

H. V. "CORKY" MOSS

H. V. "Corky" Moss of Austin, sales manager for the Featherlite Corporation, has been elected president of the Texas Concrete Masonry Association for 1972-73.

Moss has long been active in TCMA affairs. He is well known to Texas architects and was chosen as an Honorary Member of the Texas Society of Architects last year.

G. Pierce • Goodwin • Flanagan

Texas Architect featured the Fire Station — Houston Intercontinental Airport on page 20 of the April issue. Inadvertently credit was not given to the office of G. Pierce-Goodwin-Flanagan AIA who were equally responsible for the project and continue to work with Goleman & Rolfe in all new projects for the City of Houston at the airport.

R. STANLEY BAIR

R. Stanley Bair of Houston, associated with the architectural firm of Leifeste and Bair, is one of 12 individuals to be advanced to the rank of Fellow of The Construction Specifications Institute.

The Institute, with headquarters in Washington, D.C., is the nation's only technical organization dealing with all aspects of construction communications. Its membership includes individuals from all sectors of the construction industry and currently stands at approximately 10,000 in 120 chapters throughout the nation.

Bair is being honored for his distinguished achievements in education as founder, director and teacher of a highly successful specifications writing course sponsored jointly by the Houston Chapter of CSI and the University of Houston; for his activities as a member and later chairman of the Institute's Education Committee; as a frequent guest lecturer at various colleges of architecture and engineering and as an author of numerous articles related to education and the art of specification writing in national construction publications. He is also being cited for his leadership as a director, Region 9 of the Institute, which encompasses chapters in Texas and Oklahoma.



YOU'LL HEAR ABOUT US



TEXAS ARCHITECTURAL

TEAMWORK

- **Houston, 77045**
(713) 222/2934
 - George Gerdes Jr.
St. Charles Custom
Kitchens of Houston
2221 Pease
- **Amarillo, 79106**
(806) 355/6477
 - John Bingman
Kitchen Design
4108 W. 33rd St.
- **Dallas, 75201**
(214) 744/4126
 - Robert V. Lentz
Office & Showroom
2921 Routh Street
- **El Paso, 79901**
(915) 533/1405
 - John Neff
Neff Buckner Co.
600 W. Paisano Dr.
- **Fort Worth, 76107**
(817) 335/5837
 - Emil K. Test
St. Charles Kitchens
by Test
3408 Camp Bowie Bl.
- **Midland, 79702**
(915) MU 4/8942
 - J. T. Darsey
West Texas
Kitchen Mart
2313 W. Storey Ave.

St. Charles is part of that team. With a Texas-wide sales organization ready to assist you. And behind every dealer/specialist a team of craftsmen expertly designing custom cabinetry, as they have been doing for over 35 years. St. Charles is the nation's leader in custom cabinetry for use in the nation's homes, industries, hospitals and schools. Don't hesitate to tell our specialists to assist you. We feel it's our way of showing you how we got to be the leader. To find out more about our complete line of custom cabinetry write to the dealer/specialist in your area and ask him for a free copy of "St. Charles Casework Catalog."

St. Charles



TEXAS ARCHITECT
P. O. Box 25
Austin, Texas 78767

ADDRESS CORRECTION REQUESTED
FORWARDING AND RETURN POSTAGE GUARANTEED

BULK RATE
U. S. Postage
Paid
Austin, Texas
PERMIT NO. 2215

POSTAGE WILL BE PAID BY ADDRESSEE
NO POSTAGE
NECESSARY
IF MAILED
IN THE
UNITED STATES