



Official Publication of

The Texas Society of Architects

TSA is the official organization of the Texas Region of the American Institution of Architects

James D. Pfluger, AIA Editor
Taber Ward Managing Editor
Benny L. Canizaro Associate Editor
V. Raymond Smith, AIA Associate Editor

THE TEXAS ARCHITECT is published monthly by Texas Society of Architects, 904 Perry-Brooks Building, 121 East 8th Street, Austin, Texas 78701.

Editorial contributions, correspondence, and advertising material invited by the editor. Due to the nature of the publication, editorial contributions cannot be purchased.

Appearance of names and pictures of products and services in either editorial or advertising does not constitute an endorsement of same by either the Texas Society of Architects or the American Institution of Architects.

TSA OFFICERS FOR 1972

Preston M. Geren Jr., Fort Worth .. President
Jay W. Barnes, Austin .. President
Elect
Ben E. Brewer, Houston .. Vice President
Charles Harper, Wichita Falls .. Vice President
John Olson, Corpus Christi .. Vice President
Howard Parker, Dallas .. Secretary-Treasurer
Daniel Boone, Abilene AIA Regional Director
Thomas A. Bullock, Houston .. Past President
Don Edward Legge, Austin .. Executive Director

TSA DIRECTORS FOR 1972

Richard Buzard .. Abilene Chapter
Dave Graeber .. Austin Chapter
M. O. Lawrence .. Brazos Chapter
Jack Solka .. Corpus Christi Chapter
Dave Braden .. Dallas Chapter
George Staten .. El Paso Chapter
Paul Wharton .. Fort Worth Chapter
Harry Golemon .. Houston Chapter
Marvin Boland .. Lower Rio Grand Valley Chapter
Bob Messersmith .. Lubbock Chapter
Ann Bintliff .. Northeast Texas Chapter
Ed Mok .. San Antonio Chapter
Jack Stansbury .. Southeast Texas Chapter
Jim Bailey .. Panhandle Chapter
Douglas Hearn .. Waco Chapter
Daryle Hohertz .. West Texas Chapter
Joe Roberts .. Wichita Falls Chapter
Tony Balderrama .. Associated Student Chapters/AIA Houston

COVER & PAGE 3

Richardson Public Library, designed by Jarvis Putty, Jarvis Inc., Architects, is the first building in the new Richardson Civic Center Complex. Receiving a Texas Architecture 1971 Honor Award, the boldly-designed project utilizes massive columns to create an "open plan" spacious atmosphere.



TSA PUBLICATIONS COMMITTEE

George Loving, chairman, Abilene;
Marvin Boland, Brownsville
Edward W. Cartwright, Lubbock
M. E. Croston, Jr., Fort Worth
Don Henry, El Paso
Leslie Mabrey, Corpus Christi
Clarence Martin, Wichita Falls
Richard Payne, Houston
James D. Pfluger, Austin
Allen Sharp, Wichita Falls
Stanley G. Watson, Dallas

6 Architects are working with school boards and administrators throughout the state to design new buildings and modernize existing facilities that will allow flexibility for new teaching methods.



TEXAS ARCHITECT ADVERTISERS:

- p. 17 - Electric Utility Companies of Texas
p. 18 & 19 - Texas Unicon & Kirby Building Systems
p. 20 - Josam Manufacturing Co.
p. 20 - Arcrete Inc.
p. 21 - Midstates Steel & Wire
p. 22 - Doug Harper & Assoc.
p. 23 - St. Charles Manufacturing Co.

THE TEXAS ARCHITECT

VOLUME 22/FEBRUARY, 1972/ NO. 2

RICHARDSON PUBLIC LIBRARY

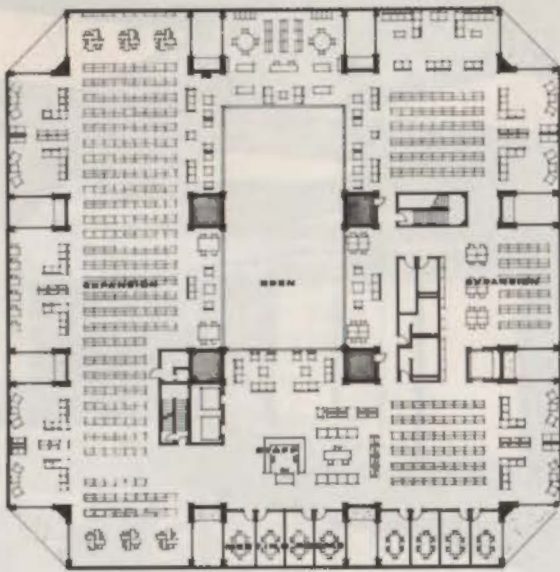
RICHARDSON
TEXAS

Photographs: Richard Payne

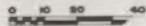


JARVIS
PUTTY
JARVIS
INC.
ARCHITECTS
DALLAS, TEXAS

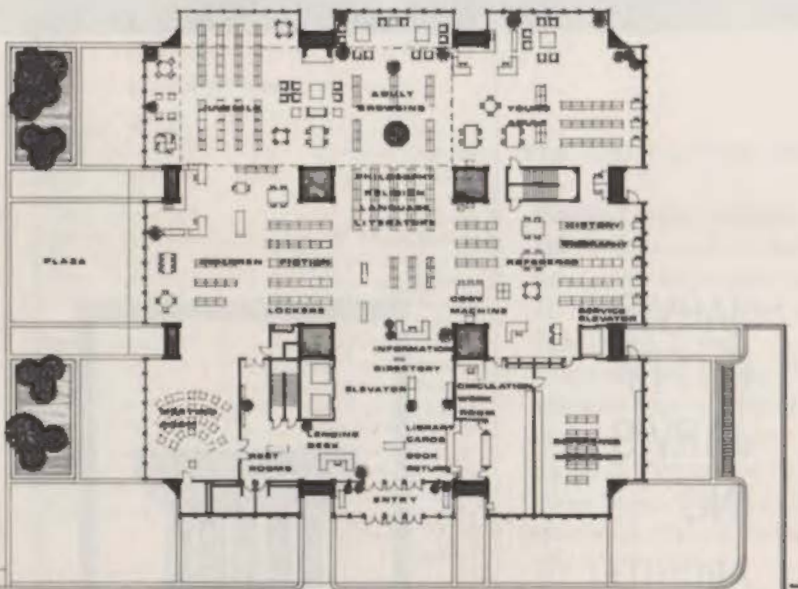




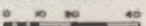
← **THIRD FLOOR · LEVEL 3 · FUTURE**



← **SECOND FLOOR · LEVEL 2**



← **GROUND FLOOR · LEVEL 1**

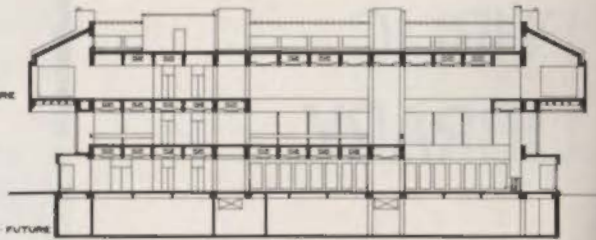


THIRD FLOOR · LEVEL 3 · FUTURE

SECOND FLOOR · LEVEL 2

GROUND FLOOR · LEVEL 1

AUDITORIUM FLOOR · LEVEL 0 · FUTURE



SECTION



STATISTICS

The library is programmed to serve the needs of a community with current population of 55,000 but predicted to grow to 110,000 by 1980. Since the building is the first in a civic center complex, all of the 81,640 square feet were constructed initially with only the immediate space requirements finished.

Remaining space, basically the third floor and lower level, will be completed in whole or part as the library services expand. Upon completion of all facilities, the library will have 250,000 titles and 50 staff members.

Structure is reinforced concrete with the floors designed to allow stack placement in any arrangement. Concrete structure is expressed throughout as a major design element with various textural surfaces. Copper roofing and bronze glass soften the effect.

Begun in December, 1968, the building cost \$1,744,343 of which \$57,000 was for site improvement. Total area is 81,640 square feet (41,814 finished and 39,826 unfinished). All furniture, equipment and special items were bid separately and cost \$104,116.37.



Editor's Note: Elementary Schools are presented in this issue. Junior and senior high schools will be featured in the March issue.

EXHIBIT OF OUTSTANDING SCHOOLS

SELECTED FOR EXHIBIT AT 1971 TASA-TASB JOINT ANNUAL CONVENTION

By Texas Society of Architects • Texas Association of School Boards • Texas Association of School Administrators
RECOGNIZED FOR EXCELLENCE IN PLANNING, DESIGN & CONSTRUCTION

A.J. MARTIN ELEMENTARY SCHOOL

ALIEF, TEXAS

McKITTRICK DRENNAN RICHARDSON & WALLACE, ARCHITECTS

According to the U.S. Department of Commerce/Bureau of Census January, 1972 report, the number of persons enrolled in elementary school (including kindergarten) will decline until the mid-1970's to about 33 million.

It should then increase to between 36 and 42 million by 1985, depending on the number of births. Fluctuations in the projections of elementary school enrollment will depend almost entirely on the number of births and not on changes in rates of enrollment since nearly all persons of compulsory school ages are enrolled in school.

High school enrollment (grades 9 through 12) should decline to about 14 million by 1985. If the average number of births tends toward the replacement level (2.11 children per woman) for the next 15 years, high school enrollment would remain relatively stable at about 14 to 17 million for the next 30 years.

The number of high school students projected after 1985 depends on the number of births occurring during the 1970's. For example, a higher number of births in the next decade (tending toward 2.78 children per woman) would increase the number of high school students to about 23 million by the year 2000.



A. J. Martin Elementary School, Alief Independent School District, received an Honor Award in the TSA Design Awards Program, "Texas Architecture 1970", and was featured in the December, 1970 Texas Architect.



JACKSON-VIA ELEMENTARY SCHOOL

CHARLOTTESVILLE, VIRGINIA

CAUDILL ROWLETT SCOTT & STAINBACK & SCRIBNER, ARCHITECTS

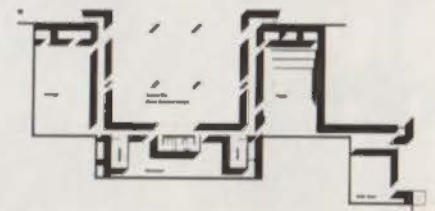
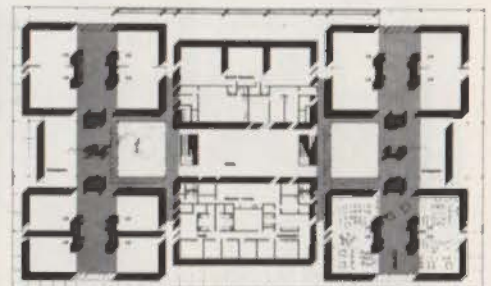


The building's elements were designed to expand or contract as educational programs change. It could be used as an ungraded school-within-a-school and would encourage team teaching and provide the flexibility of open planning.



Concept developed as a large roof plane covering four clusters of four classrooms each. Each cluster, or house, contains movable partitions. This allows variety in the grouping of activities or students. Teachers can operate as individuals or as teams within each individual house, or within different areas of the same house. Areas change as the activities taking place within them change. Small areas used for graded instruction become large areas for ungraded teaching by moving a few partitions.

James Brett — Photos



A. P. WOOLRIDGE ELEMENTARY SCHOOL

AUSTIN I.S.D.

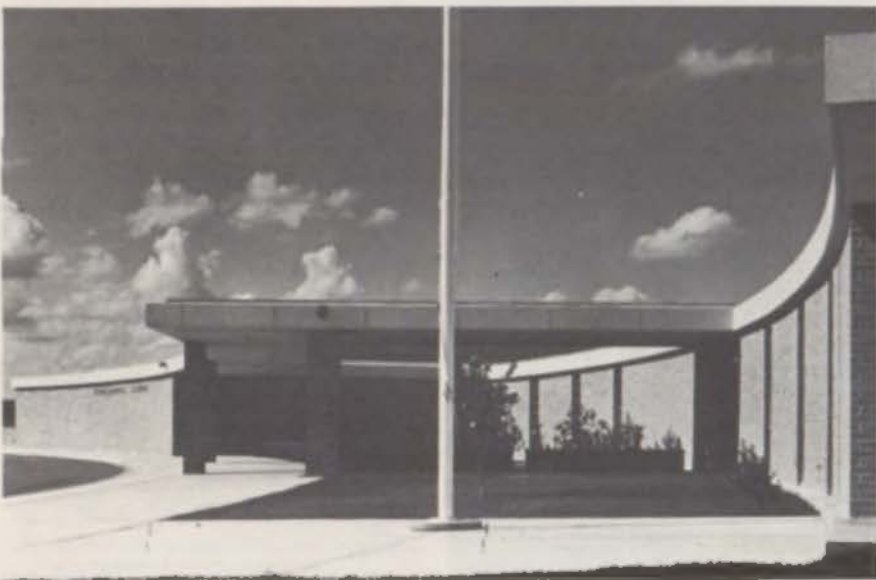
JESSEN ASSOCIATES INC.

EXHIBIT OF OUTSTANDING SCHOOLS



Site contains approximately 11 acres in a wedge shape. Narrow end is just below the crown of a hill, and the land slopes down uniformly to the north and east.

Program requirements plus a desire to preserve maximum playground area, consideration of the topography, and orientation of classroom exposure resulted in the crescent-shaped, split-level building.



The project consists of a 16-classroom first phase, with eight additional classrooms to the south now under construction. When completed, the air-conditioned complex will support 750 students in grades 1 through 6. A cafeteria, library, administration offices and physical education facilities are also planned to accommodate the ultimate enrollment.



Reagan Du Perier — Photographs

ARLINGTON PARK COMMUNITY LEARNING CENTER

DALLAS I.S.D.

FORREST UPSHAW JR. ARCHITECT

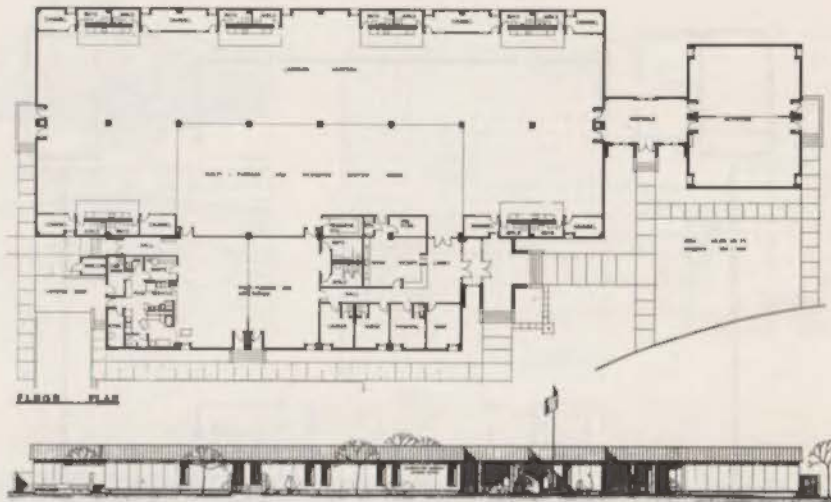
This school district needed to provide a learning center as quickly as possible to satisfy needs of a neighborhood surrounded by industrial and commercial zones. It was projected that the neighborhood would decline in residential use within approximately five years. A building was provided that can be moved and relocated in another area.

Research indicated that the most practical size for a building element that is to be moved is 24' wide, 38' long and 14' high. The school is composed of 22 modules of these dimensions. There are 16 learning and resource modules, five support modules for administrative use and cafeteria and two support modules for noise-isolated activities. The activity area and cafeteria are available for community multi-use.

Eight wall-less teaching modules may be added to the center of the learning and resource area while the number of support modules would remain fixed. This would double the capacity of the school, if needed, when moved to another site.

Modules are constructed as light as possible using conventional steel framing designed for rigidity for in-place use and with certain provisions for flexing while being moved. Each module is self-contained for its particular function. All electrical conduit and wiring, sanitation lines and air-conditioning ducts and piping are fitted with disconnect and reconnect features.

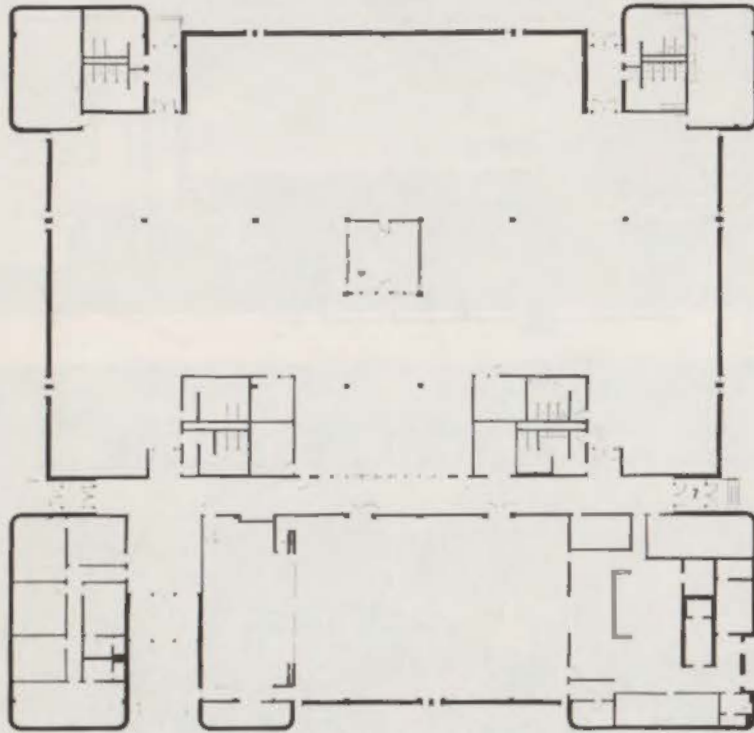
The use of the open plan concept evolved as the most efficient use of the building and the site area. The site was extremely limited in size and shape.



BEATRICE SHORT ELEMENTARY SCHOOL

ARLINGTON I.S.D.

STEWART, THRUSTON AND BECKER • ARCHITECTS



Beatrice Short Elementary School is designed to give maximum flexibility for team teaching. An open space of approximately 22,000 feet is provided for this purpose with a centrally-located, landscaped court yard that provides a natural setting within the teaching area and natural light in the learning space.

The teaching area has acoustical floors and ceilings which provide excellent noise control.

Two enclosed classrooms are provided for science experiments and other special purpose functions.

The administrative offices, teacher's work room, nurse's office and teacher's lounge are grouped for maximum control.

As in all of Arlington's elementary schools, there is a fully equipped kitchen and cafeteria with an elevated stage which also functions as a music room.



BIRCH ELEMENTARY SCHOOL ADDITION

MERRICK, LONG ISLAND, NEW YORK

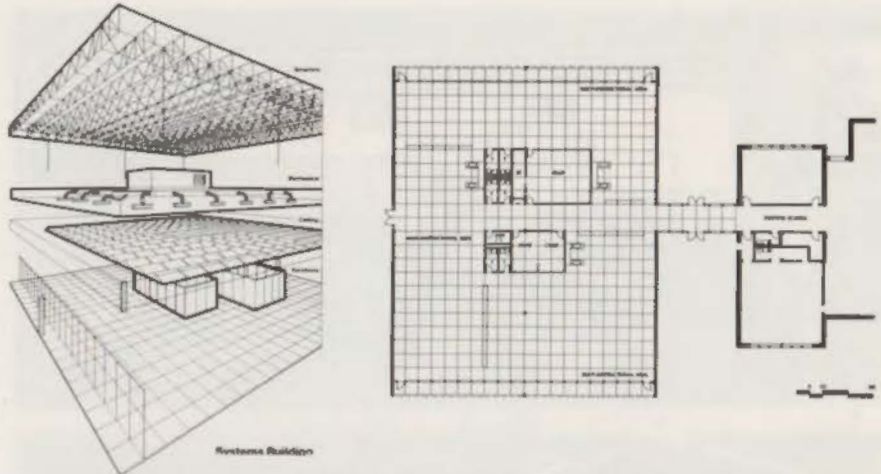
CAUDILL ROWLETT SCOTT, ARCHITECTS

Client's goals set out for this project were to provide additional space rapidly that would allow team teaching to be introduced at the primary level.

Architects used off the shelf systems building components to meet these needs and provided 12,000 square feet of flexible, multi-use space within 12 months of their appointment. Four key building sub-systems (structure, roofing, ceiling/lighting, heating/ventilating/air-conditioning) were isolated early in the process and pre-bid on the basis of performance-type specifications.

The open plan surrounds a core of conference rooms, staff rooms and toilets. Free-standing banks of cabinets are used to define areas within the overall space. Within these areas, staff and children group themselves according to needs with a number of different group and individual activities taking place simultaneously.

A long-span steel structural system provides column-free interiors. Exterior materials were selected to match those of the existing school.

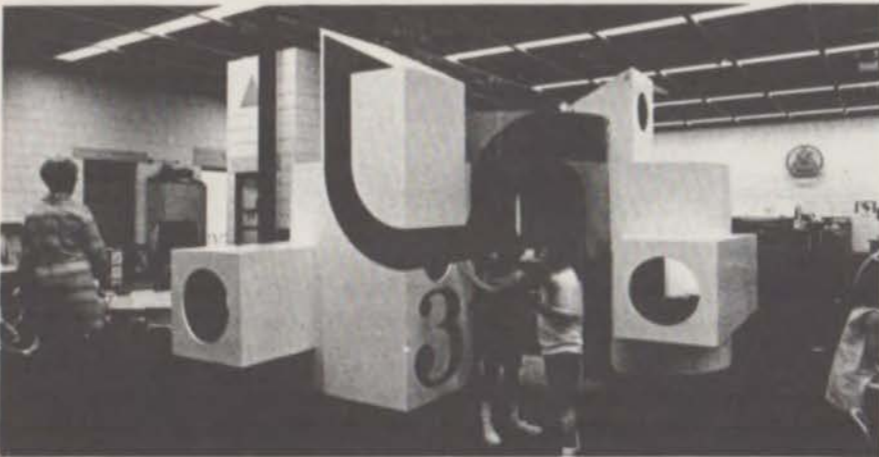


James Brett — Photographs

CASADY SCHOOL

OKLAHOMA CITY

BENHAM-BLAIR & AFFILIATES, INC., ARCHITECTS



Program requirements called for a building for a private school to provide an early education center for children, ages three through six.

It is located on a three-acre site in a remote corner of a campus that has existing lower, middle and high school facilities. It is adjacent to a major arterial street, and all children arrive and leave by automobile.

Facility is designed so that a child can move easily from group play to individual activity as he chooses and do as much for himself as possible. Environment is planned to encourage independence and individuality.



CENTRAL ELEMENTARY SCHOOL

DUNCANVILLE I.S.D.

JARVIS PUTTY JARVIS, INC., ARCHITECTS

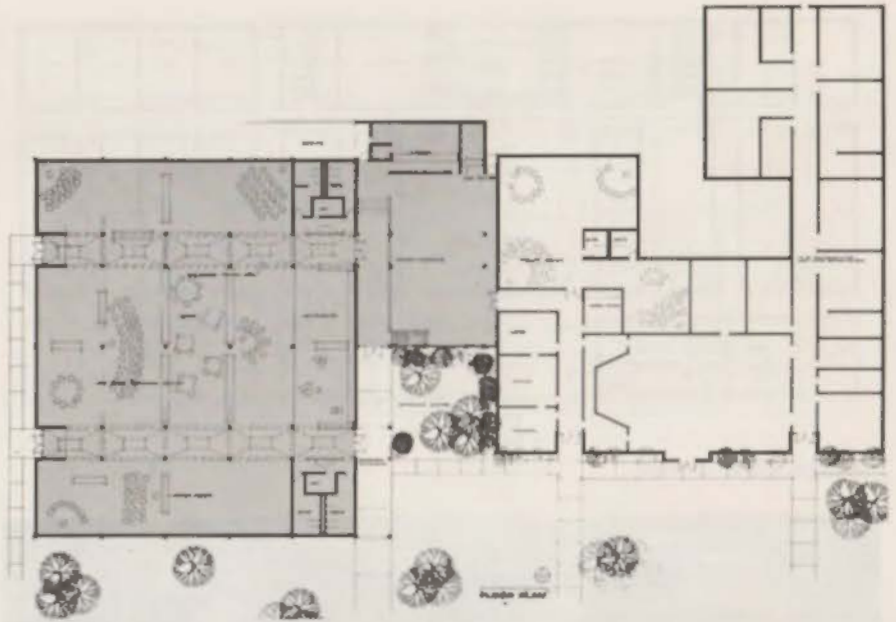
Often a school district waits to find the "right opportunity" to begin innovative design. It is often thought that only a new building with generous budget can provide this opportunity. This need not be the case, as shown by this addition to Central Elementary in Duncanville.

Here was the problem of a school campus that had to remain in operation, but with buildings in various stages of deterioration. (The original building was constructed in 1916.) Also, funds for the needed new space were limited.

Duncanville ISD had previously constructed additional academic classroom space with few permanent partitions, experimenting with the teaching of several classes—even several grade levels—within the same room. Shelving and portable tackboards were used for screening.

The central addition called for the equivalent of 16 classrooms and library to be housed within a large single space...a sort of "academic studio". The space between the large one-room academic area and the existing building was roofed over and became the student commons-dining space.

The plan proved to be remarkably economical, and its construction was handled so as to allow most classes to operate without interference.



FOSTER ELEMENTARY SCHOOL

HUMBLE I.S.D.

WYATT C. HEDRICK ARCHITECTS & ENGINEERS, INC.



FLOOR PLAN

Architects were asked to design a new 30-classroom elementary school on a ten-acre site. Budget required an economical, compact design providing ten traditional teaching stations and five four-classroom teaching modules utilizing folding partitions to be used as individual teaching stations or as a four-station team teaching module. Also required was a multi-purpose area, kitchen, learning center, space for planning and storage, and administration support areas. Community use of the multi-purpose room, kitchen, toilet facilities and lobby for night functions was a consideration. Also, the learning center and administrative areas required design for use when the school was not in session.

Besides meeting the basic space requirements, the new school has several interesting special features. Each teaching station is provided with full wall built-in storage. Teaching modules are carpeted, and two modules include fixed demonstration tables with gas, electricity and water. Two additional basic classroom teaching stations include fixed demonstration tables. The learning center includes built-in study carrels, listening tables, control desk, and work and storage space with an adjacent teacher's planning room.

A teacher's lounge with work space is provided adjacent to the administration area.



HAUDE ELEMENTARY SCHOOL

KLEIN I.S.D.

WYATT C. HEDRICK ARCHITECTS & ENGINEERS, INC.

Architects were asked to plan a new, fully-airconditioned elementary school for 720 students on a ten-acre site. It was designed to serve grades one through five plus a kindergarten and special education. Plans were developed that would encourage modern teaching concepts while maintaining traditional fixed classroom capability. Community use of the facility was considered.

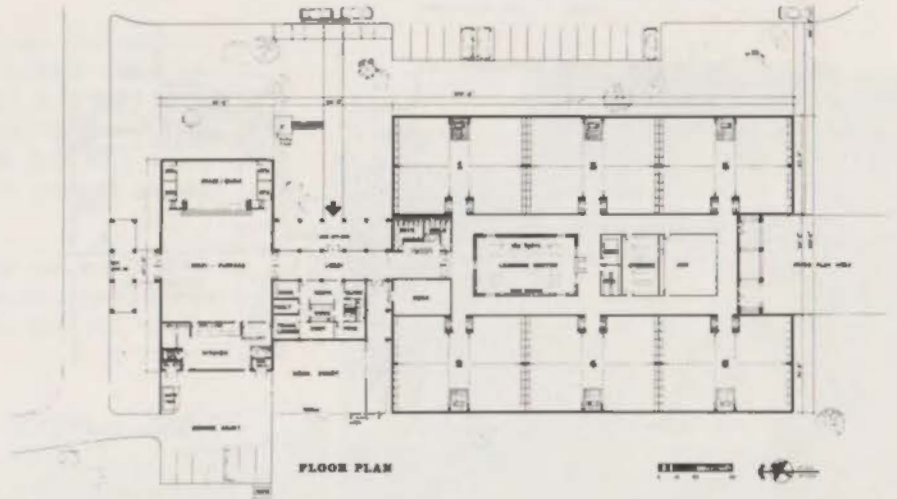
The building has 43,390 square feet in two major units, one devoted to academic areas, the other to assembly and cafeteria services. A connecting link houses lobby and administrative functions.

Outdoor play areas, public and staff entrance, service access, and school bus loading areas are oriented to different sides of the building.

Academic area consists of six teaching modules – one for kindergarten/special education and one for each grade level – grouped around a central learning center containing a library, art classrooms and project spaces.

Each teaching module is a single space containing four teaching stations, a fixed demonstration desk and platform, and toilet facilities. Each teaching station may be isolated at will by folding partitions.

The large hall of the assembly unit also serves as cafeteria and indoor play space. A sound rated stage curtain permits use of the stage as a music classroom.



"An All-Electric Kitchen Saves Us Money!"

Great Western Corporation typifies the many industrial developers of today who prefer modern, economical electricity as their energy source. The company has built three all-electric condominiums on Padre Island, and is in the process of developing a new total-electric townhouse community, Lakewood Village, in Corpus Christi, Texas.

Shown here is their beautiful Gulfstream Condominium. This modern complex includes 132 apartments, all total-electric.

Resident Managers for the Gulfstream are Mr. and Mrs. Ken Burge. In discussing the many benefits of an all-electric apartment, Mrs. Burge had this to say: "I especially like the cleanliness of the all-electric kitchen. It's easier to keep clean, and it saves us money in wages because the maids spend less time in cleaning up the kitchen area."

To find out how your particular project can benefit from going all-electric, call the Sales Engineer from your nearest Electric Utility and let him show you the facts and figures!

 **ELECTRIC
UTILITY
COMPANIES OF TEXAS**
P.O. BOX 35006 • DALLAS, TEXAS 75235

A group of investor-owned, taxpaying electric utility companies of Texas, providing dependable, economical electric power.



A BETTER IDEA IN PARKING STRUCTURES

TEXAS/UNICON

Before you plan your next parking deck, or if your present design is out of the budget — call Texas/Unicon.

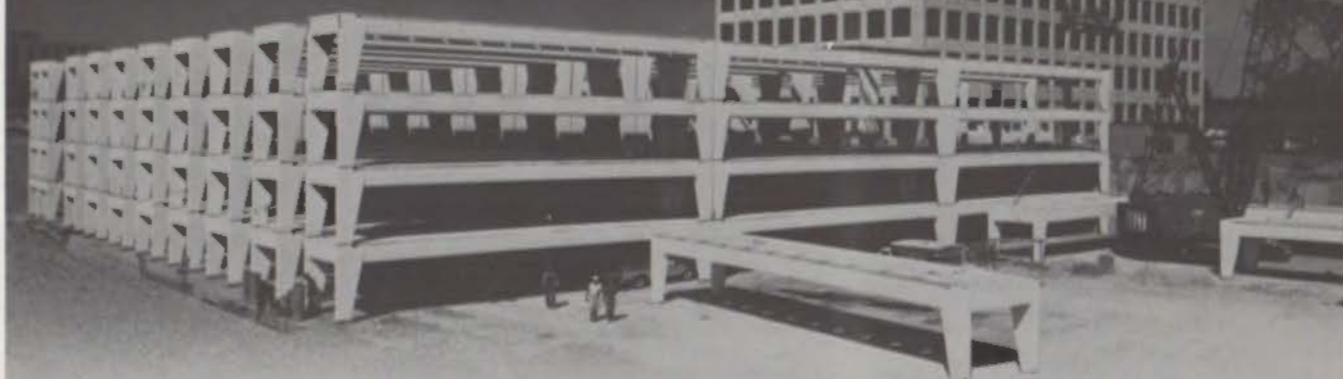
Because major structural elements are pre-fabricated, the Unicon system can cut total construction time by as much as 50%, which not only gets you into operation faster... but reduces total construction costs.

The basic structural systems — including foundations — have been built for as low as \$1150 per car.

Texas/Unicon Structures, Inc. offers architects, engineers, contractors and landowners the productive combination of a unique and well-proved building system... produced by a highly experienced engineering-oriented manufacturing company.

Texas/Unicon is a subsidiary of Kirby Building Systems, Inc., a leading manufacturer of building systems.

Construction photo of the 1066-car Texas/Unicon parking deck at 2000 Smith Office Park in Houston, built for the Gerald D. Hines Interests.



The Concept. Like most great ideas, the basic Unicon Parking Structure system is beautifully simple — consisting of two post-tensioned concrete modules. One is a precast table of varying length and width. (Stub columns may be added to these units to adjust the floor to floor heights in unusual applications.) These tables are stacked one atop another, to the planned height of the structure. The other module is a flat precast or poured-in-place slab of the same length as the tables. The

slabs connect adjoining tables to form a continuous parking floor, and post-tensioning cables squeeze the entire assembly together to form an extremely rigid, watertight unit.

A simple basic idea...and yet capable of practically endless variations in application; offering wide possibilities in terms of height (to ten stories), floor plan, ingress-egress routing, and exterior architectural design. And providing quality parking structures that are quickly erected,

economical, demountable, fire-resistant — and aesthetically pleasing.

For further information, please contact Charles Madeley or Charles White at Texas/Unicon Structures, Inc., P.O. Box 36429, Houston, Texas 77036. Phone: (713) 666-1946



TEXAS/UNICON STRUCTURES, INC.



A New Capability in the Architectural Precast Industry



KIRBY BUILDING SYSTEMS

Those gleaming white concrete panels—destined for the 40-story Dresser Tower now being built in downtown Houston—are part of the first job being done by the newest force in the Southwest's architectural precast industry... Kirby Building Systems.

Operating from this new, \$1 million plant located just west of Houston in Katy, Texas, we utilize the most modern and efficient precast equipment and technology to produce panels of outstanding strength, sharp definition and design faithfulness—in a wide range of finishes and shapes.



KIRBY BUILDING SYSTEMS, INC.

With a 15-year background in systems engineering, manufacturing and construction to draw from, we now offer you the ideal combination of a superior precast architectural product, competitive prices... and dependable delivery.

A visit to our plant—and inspection of our product—will convince you of the validity of the Kirby motto: "Committed to Excellence."

For additional information, please contact Charles Madeley or Charles White at Kirby Building Systems, Inc., P.O. Box 36429, Houston, Texas 77036. Phone: (713) 666-1946.

AMERICAN
INSTITUTE
OF
ARCHITECTS

HOUSTON
MAY 7-10



C. Herbert Paseur of Houston, chairman of the 1972 Annual Convention of the American Institute of Architects, visits with Governor Preston Smith following the signing of an Official Memorandum designating the period of May 7-10 as Architects Week in Texas. These dates coincide with those of the convention which will be held in Houston.

Besides his duties as convention chairman, Paseur is the current president of the Houston Chapter of AIA. He is president of CRS Design Associates of Houston.

Governor Smith's Memorandum states, "The 24,000 members of this organization have selected as their theme and goal 'National Policy 1972.'"

"Of top priority during the convention will be reviewing recommendations of a task force — a task force appointed to study and recommend the possible alternatives in rebuilding of cities, new town development, urban growth outside metropolitan areas, regional land-use planning, provision of housing for lower-income families, and the proper use of our natural and human resources. The AIA will dedicate itself to shaping a national policy, a reordering of priorities, for guiding our nation's settlement patterns during the next twenty years, in order to create a better environment.

All citizens of Texas are pleased that the American Institute of Architects has selected the great City of Houston, Texas as the site for their annual convention, and we wish to extend the traditional warm hospitality that has long marked this state's illustrious history.

FLO-SET
THE PERFECTLY ADJUSTED
CONTROLLED FLOW
ROOF DRAIN



• Where controlled flow roof drainage is to be used to restrict the flow of rainwater from a roof, make your choice FLO-SET — it goes beyond anything yet offered in service and performance.

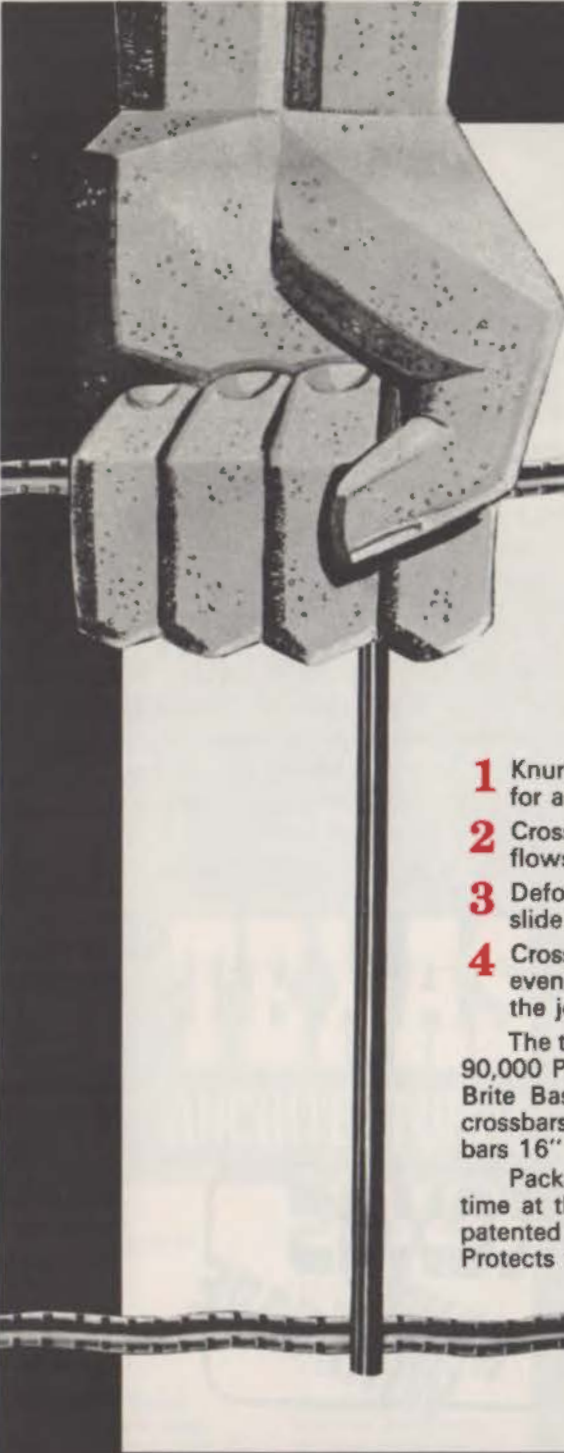
Calibrated weir openings, set at the factory, provide you with the exact measure of flow control based on the rainfall data in your area and the type of roof design.

For complete details, call or write for Manual CFC.

District Representatives
Arnold-Lansden & Associates
510 Shepherd Drive P.O. Box 7846
Houston, Texas 77007
Phone: 713/864-7733
Dillard Associates
110 Manufacturing Street
Dallas, Texas 75207
Phone: 214/748-7708



YOU'LL HEAR ABOUT US



Reinforcing with 300% more gripping power

STRONGWALL

Stick-to-it-ness! That's what MidSTATES puts into its ladder-type Strongwall reinforcing to help it grab hold of the mortar better. And it does it in four important ways:

- 1** Knurled side rods bite into mortar on all four sides for a better bond.
- 2** Crossbars welded over the side rods mean mortar flows all around—top, bottom and sides.
- 3** Deformed side rods with 10 degree bends can not slide in mortar.
- 4** Crossbar is extended $\frac{1}{8}$ " over side rods. Stress is evenly distributed across weld at critical stress point—the joint.

The tensile strength of Strongwall reinforcing exceeds 90,000 P.S.I. after knurling and deforming. Galvanized or Brite Basic finishes. Available in 10-foot sections with crossbars 15" on center or 12-foot sections with crossbars 16" on center. Also available in truss design.

Packaged and palletized to save loading and handling time at the construction site, Strongwall is protected by patented corrugated "boots". Arrives in perfect condition. Protects workmen too.

Write for free Strongwall Brochure and complete specifications, both ladder and truss type reinforcing.



MIDSTATES WIRE

MID-STATES STEEL and WIRE Sherman, Texas
Division of Keystone Consolidated Industries, Inc.



PHOENIX

CONTROL JOINT MOULDING

- CONTROL JOINTS SEALANT
- "T" PROFILE - FLAT SURFACES
- "L" PROFILE - CORNERS/WALL - COLUMN
FLOOR - CEILING
WALL - FLOOR
- FURNISHED IN PLASTIC OR ALUMINUM
- FLEXIBLE CAP J.F.S.
- EXPANDS & CONTRACTS WITH MOVEMENT
OF JOINT
- CAP PIGMENTED TO ARCHITECTS DESIGN
SCHEME



*Doug Harper
and Company*

P. O. BOX 5202
SHREVEPORT, LOUISIANA 71105

NEXT PDP SEMINAR -

Practice in the 70's

TSA's second Professional Development Program of 1972, produced by the Committee on Organizing for Practice, is scheduled for April 7-8 in San Antonio. Entitled "Practice in the 70's", the program will consist of case studies in organization and management.

This first problem-solving seminar will assist architectural firms of all sizes with organizational and managerial problems. Participants can study innovative business practices through small group sessions with key members of highly organized national and international firms as well as those of progressive small operations. Case study firms will "tell it like it is".

Mark your calendar now to be at the TraveLodge at LaVillita in San Antonio, April 7-8. Registration fee is \$100 for the two-day meeting. Applications will be mailed to all TSA members in early March. If you want additional information prior to that time, contact TSA, 904 Perry-Brooks Building, Austin 78701.



"Texas: A World of Difference." There IS a world of difference in Texas. There are environmental opportunities—options no longer available in many other states. There's more inland water here than in any other state except Alaska—and most of it is clear and fresh. The air in most places is still crisp. The scenery is unparalleled. Historic resources abound. And the people have that friendliness, that determination and that independence difficult to define but easy to respect.

Indeed, Texas itself and its people are compelling reasons enough to adopt a determined protective attitude.



A SUGGESTION FROM THE TEXAS SOCIETY OF ARCHITECTS



TEXAS ARCHITECTURAL

TEAMWORK

- **Houston**
(713) 222/2934
 - George Gerdes Jr.
St. Charles Custom
Kitchens of Houston
2221 Pease
- **Amarillo**
(806) 355/6477
 - John Bingman
Kitchen Design
4108 W. 33rd St.
- **Corpus Christi**
(512) TU 4/1951
 - Ron Thedford
Kitchen Designers
of Corpus Christi
1711 South Staples
- **Dallas**
(214) 744/4126
 - Robert V. Lentz
P.O. Box 10151
- **El Paso**
(915) 533/1405
 - John Neff
Neff Buckner Co.
600 W. Paisano Dr.
- **Fort Worth**
(817) ED 5/5837
 - Emil K. Test
St. Charles Kitchens
by Test
3408 Camp Bowie Bl.
- **Midland**
(915) MU 4/8942
 - J. T. Darsey
West Texas
Kitchen Mart
2313 W. Storey Ave.
- **San Antonio**
(512) DI 1/4451
 - A. J. Martin
Martin & Associates
6833 San Pedro

St. Charles is part of that team. With a Texas-wide sales organization ready to assist you. And behind every dealer/specialist a team of craftsmen expertly designing custom cabinetry, as they have been doing for over 35 years. St. Charles is the nation's leader in custom cabinetry for use in the nation's homes, industries, hospitals and schools. Don't hesitate to tell our specialists to assist you. We feel it's our way of showing you how we got to be the leader. To find out more about our complete line of custom cabinetry write to the dealer/specialist in your area and ask him for a free copy of "St. Charles Casework Catalog."

St. Charles



TEXAS ARCHITECT
P. O. Box 25
Austin, Texas 78767

ADDRESS CORRECTION REQUESTED
FORWARDING AND RETURN POSTAGE GUARANTEED

