

1955

FEBRUARY

# TEXAS ARCHITECT

OFFICIAL PUBLICATION OF THE TEXAS SOCIETY OF ARCHITECTS

## IN THIS ISSUE

- ◆ TSA Board Sets 1955 Program
- ◆ Optimistic Picture For Building Industry
- ◆ TSA Chapters Name Officers

Section 3446 P. L. & R.  
 U. S. POSTAGE  
**PAID**  
 FORT WORTH, TEXAS  
 PERMIT No. 2037



The Ben Milam Elementary School at Bryan, Texas has been selected by the members of the Brazos Chapter as a representative work in that area. Architect: William E. Nash, TSA-AIA, Bryan. Associated architects and engineers, Stone and Pitts, TSA-AIA, Beaumont.

TEXAS ARCHITECT

Box 1733

FORT WORTH, TEXAS

Form 3547 Requested

# WHICH IS MORE *ECONOMICAL?*

LOAD-BEARING  
BRICK AND TILE  
CAVITY WALLS?



CONCRETE BLOCK  
IN A REINFORCED  
CONCRETE FRAME?



## BRICK AND TILE *COSTS LESS!*

*HERE ARE  
THE FACTS!*

At Abilene, Tex., Little Rock, Ark., Plattsburg, N. Y., and Fort Bragg, N. C., load-bearing brick and tile cavity wall dormitories are costing the Air Force less to build and less to maintain than the same dormitories built of concrete block in a reinforced concrete frame.

Alternate bids were taken on the three-story buildings pictured above. In each case, the brick and tile bid was considerably lower. Hundreds of thousands of dollars are being saved by the Air Force at these installations through the use of Clay Products.

You can design brick and tile buildings at lower initial cost with lower maintenance expenditures just as the Air Force is doing. Proper architectural and engineering design is the answer. The Clay Products Association of the Southwest will be glad to assist you at any time.

*The Clay Products Association of the Southwest is a non-profit organization of progressive brick and tile manufacturers, instituted primarily to provide a consulting service to architects and engineers through the development of authoritative product literature and a field engineering service with offices in Austin, Fort Worth, Dallas, Houston, Oklahoma City, and Tulsa.*

# CLAY PRODUCTS

association of the Southwest

109 PERRY - BROOKS BLDG. AUSTIN, TEXAS

SWINGING DOORS • SLIDING PANELS • CASEMENT WINDOWS • PROJECTED WINDOWS

... as illustrated in Sweets

*Aluminum*

**ALUMAR**

REG. U.S. PAT. OFF.

*Products*

R. H. FOLMAR COMPANY MANUFACTURERS AUSTIN, TEXAS

She wants a Bilt-in range...



*\*all-electric  
Bilt-in  
ranges*

*... the Original  
and The Finest*

She deserves a THERMADOR\*



Write today for information

**THERMADOR ELECTRICAL MANUFACTURING CO.**

Division of Norris-Thermador Corporation

5119 District Boulevard, Los Angeles 22, California

3975



## The President's Letter

By  
Grayson Gill,  
TSA-AIA.

President,  
Texas Society  
of Architects



It was my privilege on January 8 to serve for the first time in an official and formal capacity as president of TSA, at the meeting of the TSA Executive Board in Austin.

This is always an extremely important session, for at it are outlined the program and objectives of the various TSA committees for the year. My impression at the January 8 meeting was of hard work, enthusiasm, sincerity, and the determination to make this a year marked by great progress for TSA. What this actually means is ever-increasing service to the citizenship of the state, since TSA's prime objective is to progress through having the profession of architecture serve the people of Texas.

In making committee appointments this year, the Executive Board has been very conscious of the need to include younger practitioners in committee assignments. Active participation in TSA affairs, we believe, is an ideal training ground for architects, for in working with their fellow practitioners, our younger members are being trained directly for participation in community affairs. There is a natural progression here, from activity and increasing leadership in professional matters, many of which are directly concerned with the community and its problems, to an acceptance of community responsibilities.

In making committee assignments, therefore, I felt that the Executive Board was not only fulfilling the narrower sense of TSA by-laws dealing with the matter, but was interpreting them broadly and properly. Instead of merely naming a man to a TSA committee, we were asking him to serve both his profession and the public.

And we feel that TSA members will accept committee assignments in that spirit, reflecting throughout our organization the obvious determination to make 1955 a record year of achievement which was evident at Austin.



## Easy to care for...

Architects know that maintenance cost is one of the major considerations in specifying a floor covering.

Dense, yet resilient, floors of Wright Rubber Tile bring savings in maintenance that quickly offset the initial savings of a "cheaper" floor. Dirt won't penetrate Wright's non-porous surface. Mopping and occasional waxing will retain its new-look luster indefinitely.

Because of these characteristics, Wright Rubber Tile is particularly appropriate in large, heavy-traffic jobs, where maintenance costs might otherwise become excessive.

Pictured above is Battelstein's fashionable River Oaks Store in Houston. Wright Rubber Tile was used in all principal sales floor areas.

WRIGHT MANUFACTURING CO.  
5205 Post Oak Road, Houston, Texas

WRIGHTEX  
WRIGHTFLOR  
VINYL TILE  
ECONOTILE

see our catalog in  
ARCHITECTURAL  
FILE  
or write for copy



# WRIGHT RUBBER TILE

*The 100-Year Floor!*

## INSIDE THE TEXAS ARCHITECT

Optimistic Picture For Building Industry.....	5
TSA Board Sets 1955 Program.....	9
TSA Chapters Name Officers.....	8

Published monthly by the Texas Society of Architects in Houston. Subscription price, 50c per year, in advance. Copyrighted 1951 by the T.S.A., and title registration applied for with the U. S. Patent Office.

Editorial contributions, correspondence, and advertising invited by the Editor. Due to the nature of the publication, editorial contributions cannot be purchased. Publisher gives permission for reproduction of all or part of editorial material

herein, and requests publication credit be given THE TEXAS ARCHITECT, and author of material when indicated. Publications which normally pay for editorial material are requested to give consideration to the author of reproduced by-lined feature material.

Appearance of names and pictures of products and services in either editorial copy or advertising does not constitute an endorsement of same by either the Texas Society of Architects or the American Institute of Architects.

## THE TEXAS ARCHITECT

Official Publication of

THE TEXAS SOCIETY OF ARCHITECTS

The Texas Regional District Organization of  
The American Institute of Architects

David C. Baer, AIA-TSA..... Editor  
1200 Bissonnet, Houston

John G. Flowers, Jr..... Managing Editor  
Perry-Brooks Building, Austin

George Kirksey & Associates  
Editorial Counselors  
2244 W. Holcombe, Houston

### PUBLICATION BOARD

David C. Baer, Chairman, TSA-AIA	Houston
Lee R. Buttrill, TSA-AIA	Beaumont
Harold E. Calhoun, TSA-AIA	Houston
Grayson Gill, TSA-AIA	Dallas
Albert S. Golemon, TSA-AIA	Houston
David D. Red, TSA-AIA	Houston
Edward L. Wilson, TSA-AIA	Fort Worth

## TEXAS SOCIETY OF ARCHITECTS OFFICERS

Grayson Gill.....	President
1913 San Jacinto, Dallas	
R. Max Brooks.....	Vice-President
205 E. 8th Street, Austin	
Fred J. MacKie.....	Second Vice-President
2713 Ferndale, Houston	
Louis F. Southerland.....	Secretary-Treasurer
602 West Avenue, Austin	
John G. Flowers, Jr.....	Executive Director
327 Perry-Brooks Building, Austin	

### DIRECTORS

O. L. Puckett.....	Big Spring
Panhandle Chapter, A.I.A.	
Winfred O. Gustafson.....	Austin
Central Texas Chapter, A.I.A.	
Terrell R. Harper.....	Dallas
Dallas Chapter, A.I.A.	
Robert P. Woltz, Jr.....	Fort Worth
Fort Worth Chapter, A.I.A.	
Charles Huie, Jr.....	San Antonio
San Antonio Chapter, A.I.A.	
Otis F. Johnson.....	Corpus Christi
Coastal Bend Chapter, A.I.A.	
Harold E. Calhoun.....	Houston
Houston Chapter, A.I.A.	
Warren C. Suter.....	Mission
Lower Rio Grande Chapter, A.I.A.	
William G. Wuehrmann.....	El Paso
El Paso Chapter, A.I.A.	
Ernest Langford.....	Bryan
Brazos Chapter, A.I.A.	
David S. Castle.....	Abilene
West Texas Chapter, A.I.A.	
R. C. Heartfield.....	Beaumont
Southeast Texas Chapter, A.I.A.	
Albert S. Golemon.....	Houston
A.I.A. Director	

## CALENDAR OF EVENTS

February 7-11—UHAS symposium at University of Houston.

April 2—Spring meeting, Executive Board, TSA, at Austin.

November 2-4—16th annual convention, TSA, Shamrock Hotel, Houston.

## How Architecture Saves The Client Money

### Dallas Chapter, AIA

## Preservation Of Historic Buildings

## Plans For Texas Architects' Week

## In This Issue

U. S. Government estimates that 100,000 more houses will be built in 1955 than in 1954, the lead editorial points out.

TSA has adopted a record budget and set its annual convention for next November 2-4 in Houston, a summary of the winter board of directors meeting shows.

The cover picture of the Ben Milam Elementary School at Bryan is of a 12-classroom structure of brick, cement, asbestos, glass, and redwood that has caused much favorable comment. Architect William E. Nash used a suspended floor system on drilled under-raamed piers; steel H columns supporting a roof system of long-span joists and metal deck; and suspended acoustical ceilings.

### INDEX TO ADVERTISERS

	Page
Binswanger Co. ....	4
William Cameron & Co. ....	11
Clay Products .....	Cover II
James B. Clow & Sons .....	9
Construction Service Co. ....	12
Detendorf Marble .....	10
Finger Furniture .....	10
R. H. Folmar .....	1
Kilgore Ceramics .....	7
LCN Closers, Inc. ....	10
Monarch Tile Co. ....	4
Norris-Thermador .....	1
The Southwell Co. ....	12
Southern Inspection Service .....	12
Texas Bitulithic .....	7
Texas Bureau for Lathing & Plastering .....	11
Texas Model Co. ....	12
Texas Quarries .....	Cover III
Texas Steel Co. ....	6
Trinity White .....	Cover IV
Wright Manufacturing Co. ....	2

# answering the DEMAND

Now — in addition to our regular, deluxe Gulfspray line Shower Enclosures and Doors — we introduce our

NEW ECONOMY STANDARD

## GULFSPRAY SHOWER ENCLOSURE

with many quality features found in custom units.

FOR RECESSED TUBS

- FOR LOW AND MEDIUM PRICED HOMES (with high quality standards)
- QUICK, EASY INSTALLATION (interchangeable right or left)
- EYE APPEAL home planners are insisting on at every price level

Standardization and simplification make this quality enclosure possible at a budget price. Many of the same features as deluxe Gulfspray units; fool-proof over-head track, heavy, extruded aluminum, precision engineering, and rugged construction.



Serving the South & Southwest with Glass Products Since 1872

GULFSPRAY  
NEW  
ECONOMY MODEL  
#1650

\* SEND FOR LITERATURE AND DETAILS.

7 TEXAS  
WAREHOUSES  
TO SERVE  
YOU

**Binswanger + co.**  
*of Texas*

207 N. MAIN ST.

HOUSTON, TEXAS

Possibilities Multiply with . . .



## Monarch Colorblend Tiles

when installations combine the *color-blending* feature and MONARCH'S wide variety of shapes, trims and sizes. This built-in vanity with its unusual charm was made possible by a  $4\frac{1}{4} \times 4\frac{1}{4}$  bullnose used in the front. This A4402 shape assures smooth uniformity by following the lines of the regular  $4\frac{1}{4} \times 4\frac{1}{4}$  shape. All "creative-idea" restrictions vanish when you specify MONARCH Colorblend genuine clay tiles.



**MONARCH TILE MANUFACTURING, INC.**

SAN ANGELO, TEXAS

SHOWROOMS AND WAREHOUSES IN: Dallas, El Paso, Fort Worth, Houston, San Antonio, Texas; Phoenix and Tucson, Arizona; Shreveport, Louisiana; Oklahoma City, Oklahoma; Denver, Colorado.

# Optimistic Picture For Building Industry

First reports for January, 1955, now being tabulated by various services and governmental bureaus for later analysis, indicate clearly that the marked upturn in construction noted in the last quarter of 1954 is continuing as expected into the new year.

Among the latest indications that the building industry is continuing to flex its muscles is a government prediction that 1955 home starts will exceed 1954 totals by 100,000 units. The prediction, made in late January at the giant Chicago convention of the National Association of Home Builders, was in keeping with the general tone of optimism, backed by economic facts, reflected in many speeches before NAHB delegates.

The home builders believe that building costs have entered a more stable period. They look for a continuing demand from prospective buyers, and are busy increasing that demand by sound and effective planning, research, and forward thinking. The results are already seen in more stability for one of our key industries.

We believe one of the reasons for a continuing high level of home starts, is that NAHB members are working closely with members of the American Institute of Architects on a joint committee aimed at studying common problems and making the benefits of architecture available to more builders and owners. Among the results of this joint effort are better-designed, more attractive homes with greater economic value and greater appeal to everyone concerned, including prospective owners, lending companies and agencies, and the community in general.

The home building industry lies near the heart of the U. S. economy. While it prospers on a sound basis, all business has a mighty stimulus toward prosperity. Architecture has proved increasingly that it has much to offer the builder of homes, as well as all other segments of the building and construction industry. Whether you are directly engaged as a home builder, in many of the businesses which deal with this industry, or are a prospective home buyer, we invite you to learn more of how architecture benefits everyone in the building picture.

## First Meeting In South

The January 31-February 1 meeting of the national AIA public relations committee, recently concluded in Houston, was of considerable sig-

nificance in the 104-year history of the American Institute of Architects.

For the first time, the increasingly important national public relations group met in the South, in the state where the AIA has had a particularly large growth through its regional organization, the Texas Society of Architects.

The principal business of the Houston meeting was detailed planning of the third year of a national public relations program launched by the AIA in 1953. The program, through natural acceleration which was part of the overall plan, has played a major part in explaining architecture and its functions and services to the general public. 1955 activities, based in part upon decisions made at Houston, are expected to be the most important portion of the entire plan.

TSA is honored to have had the national AIA public relations committee meet in the state, and wishes its membership and the AIA every success in the continuing program aimed at better public understanding of architecture and how it serves the nation.

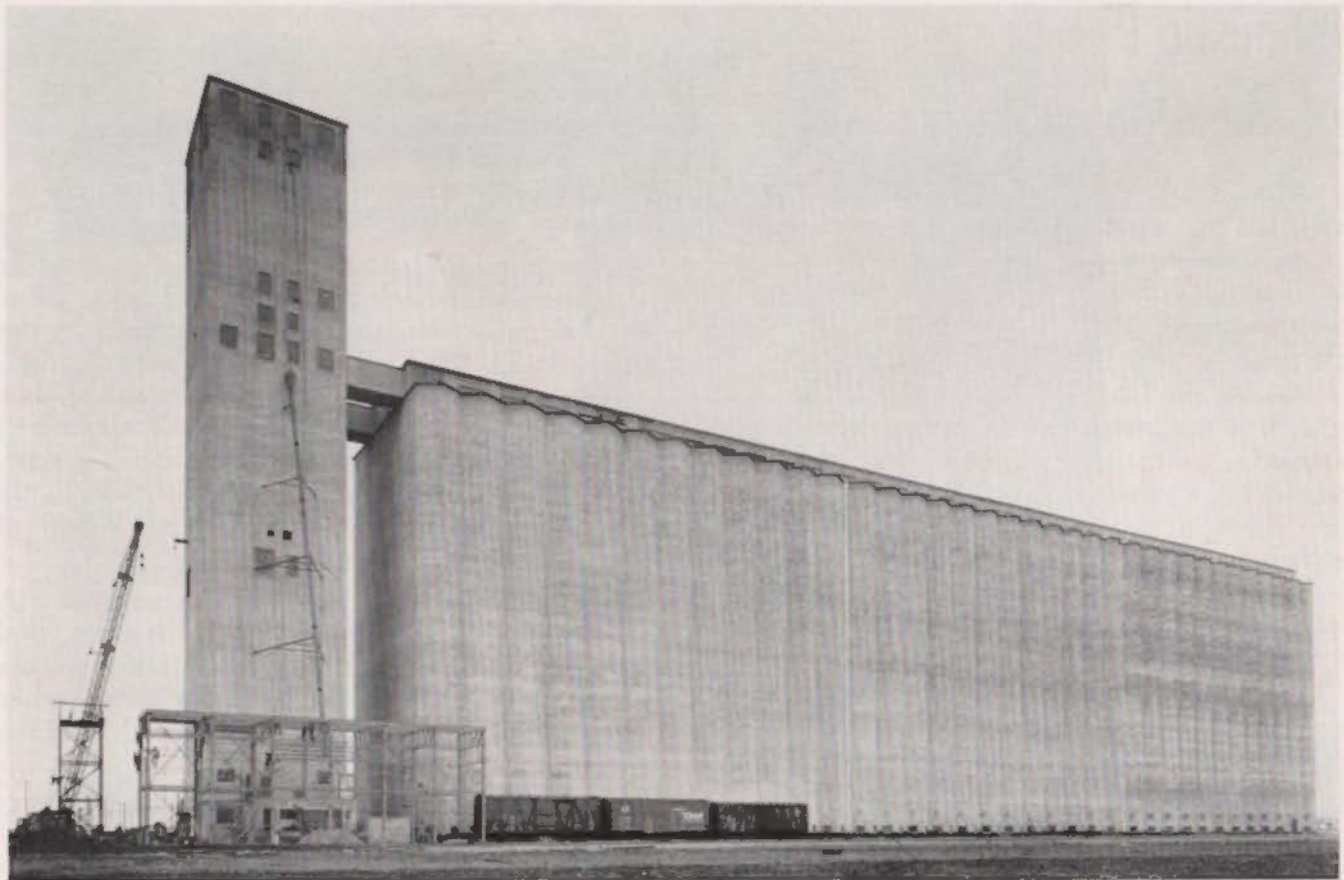
## Why Add To Payrolls?

There comes to hand an announcement from the Federal Housing Administration, noting the existence of a "tremendous backlog . . . without enough people to complete our processing . . ." As a result, FHA is seeking appointees for the position of Architect-Examiner and Valuator, a civil service position paying up to \$6940 with promotions to higher-paid openings possible.

We are sympathetic with the need for this technical assistance, particularly since a backlog at FHA, as the announcement notes, ". . . causes considerable difficulty to all people connected in any way with the building, real estate or mortgage industry . . ." The need is so great, according to FHA, that they "have an emergency as far as personnel is concerned". Individuals with less than the qualified experience will be considered on a basis of special examinations.

The point is, however, that simultaneously with this need for technical assistance, there are a number of thoroughly trained, experienced, and competent architects in Texas available to serve FHA as private practitioners on a fee basis. Why not use these people instead of building up the government payroll? When the backlog of cases is handled, the private practitioner receives his fee and that is the end of it. But if a man has been added to a civil service position, what happens when FHA is not so busy as at present?

He stays on the payroll.



**FIVE MILLION BUSHEL STORAGE FOR HEARD ELEVATOR COMPANY**

Saginaw, Texas

Designed and Built by: **CHALMERS & BORTON**  
*Contractors and Engineers*  
Hutchinson, Kansas

1875 Tons of HI-BOND BARS  
Furnished by **TEXAS STEEL COMPANY**

**TEXAS STEEL Co.**

3901 HEMPHILL STREET

FORT WORTH

PHONE WE-4611



# ASPHALT PAVING is a FLEXIBLE paving ... does not break like RIGID paving

Asphalt, the flexible paving, is always in contact with the foundation.

Rigid pavement becomes a beam when subgrade settles. Heavy loads break this beam. Continued application can cause pumping or additional breaking at some point several feet away. Always specify ASPHALT PAVING ... the flexible paving that costs less and lasts longer.

Standard size for Texas Bitulithic  
4" paving



## COLOR | DESIGN | PERFORMANCE

All products in the famous Kilgore Ceramics line are now available in a choice of four beautiful colors at prices you'd expect to pay for whitewares.

With the introduction of Kilgore Ceramic's new color line, the most discriminating persons can find their every desire in this fine line of bathroom fixtures. Made RIGHT in Texas, the resulting savings will be most welcome too!



picture shows  
our "APEX" unit,

**KILGORE CERAMICS CORPORATION**  
*Manufacturers of* FINE CHINA PLUMBING FIXTURES  
Box 1619 Kilgore, Texas



## TSA Chapters Name New Officers as Active Year Begins Across State

All 12 TSA Chapters except the Lower Rio Grande Valley affiliate, which elects officials later in the year, have named new 1955 officials and installed them at recent meetings:

**BRAZOS:** President, William E. Nash; vice-president, Arch C. Baker; secretary, Richard Vrooman; treasurer, Bill Caudill, TSA director, Ernest Langford.

**CENTRAL TEXAS:** President, Chas. T. Granger, Jr.; vice-president, James J. Pollard; secretary, Claude M. Pendley, Jr.; treasurer, Carlton Brush; TSA director, Winfred O. Gustafson.

**DALLAS:** President, Roscoe P. DeWitt; vice-president, Harris A. Kemp; secretary, La Vere Brooks; treasurer, E. Carlyle Smith; TSA director, Terrell R. Harper.

**EL PASO:** President, C. Ewing Waterhouse; vice-president, Theodore E. Crocker; secretary-treasurer, Robert D. Garland; TSA director, Wm. G. Wuehrmann.

**FORT WORTH:** President, Edward L. Wilson; vice-president, Lee Stuart, Jr.; secretary, A. C. McAdams; treasurer, Jay Teel Dunlap; TSA director, Robert P. Woltz, Jr.

**HOUSTON:** President, Thompson McCleary; vice-president, Baldwin N. Young; secretary, Gunter W. Koetter; treasurer, Chas F. Sullivan; TSA director, Harold Calhoun.

**PANHANDLE:** President, Guy A. Carlander; vice-president, John C. Kerr; secretary, Clayton B. Shiver; treasurer, Howard M. Ensign; Chapter director, John S. Word; TSA director, O. L. Puckett.

**SAN ANTONIO:** President, Thomas B. Thompson; vice-president, 1st, Clarence Rinard; vice-president, 2nd, Henry Walther; secretary-treasurer, Raymond Phelps, Jr.; TSA director, Charles Huie, Jr.; directors: C. C. Simmons, E. I. Freeborn, John R. Walker.

**SOUTHEAST:** President, Mike Mebane; vice-president and treasurer, Douglas E. Steinmann, Jr.; secretary, George Ingram; TSA director, Richard C. Heartfield.

**COASTAL BEND:** President, Walter Wilde; vice-president, Vernon Smith; secretary-treasurer, Ben E. Christian; TSA director, Otis F. Johnson.

**WEST TEXAS:** President, Royal Dana; vice-president, Woodlief F. Brown; secretary, Doyle C. Maddux; treasurer, Joseph J. Black; TSA director, David S. Castle.



### NEW SCHOLARSHIP FOR ARCHITECTURE STUDENTS ANNOUNCED

Clayford T. Grimm, executive secretary, Clay Products Association of the Southwest, at left, is shown presenting scholarship program to R. Max Brooks, center, vice president, and John Flowers, Jr., executive director, Texas Society of Architects.

## Clay Products Association Scholarships Will Go To Students In Nine Schools

Nine architects and architectural engineering scholarships will be awarded to students in as many Southwestern schools in the first annual Clay Products Scholarship Competition. The Texas Society of Architects and the Clay Products Association of the Southwest are joint sponsors of the new scholarship competition. The best aesthetic and structural design performance of students from nine universities will receive professional recognition and a grand prize will be awarded at the annual TSA Convention each fall.

The participating schools are Texas University, Texas A & M, Rice Institute, Texas Technological College, University of Houston, University of Oklahoma, Oklahoma A & M, Louisiana State University and Tulane University.

#### Faculty to Select Work

The faculty of each school will select the work of their top fourth year student, consisting of a selection of major design or structural solutions by the student during his fourth year. The win-

ner in each school will receive a \$10 scholarship grant.

The best work of the nine prize winners will be judged at the 16th annual TSA convention in Houston November 2-4 by a committee of practicing architects appointed by Grayson Gill, president of TSA. The student whose work is judged the best of the nine entries will be awarded an additional \$400 grant.

#### Joint Sponsorship for TSA

The Texas Society of Architects is associated with the Texas Architectural Foundation in fostering scholarships, lecture series and other professional aids for students of architecture.

The Clay Products Association of the Southwest is a regional trade group of progressive brick and tile manufacturers, instituted primarily to provide architects and engineers with a consulting service through the development of authoritative product literature and a field engineering service with offices in Austin, Fort Worth, Dallas, Houston, Tulsa and Oklahoma City.

## TSA Board Approves Record Budget; Plans For Active Year Readied

The TSA Executive Board held one of its busiest winter sessions on record in Austin January 8, handling a heavy agenda in day-long meetings at the Commodore Perry Hotel with Grayson Gill, TSA-AIA of Dallas, presiding.

Among principal action by the board was the following:

1. Approval of a record \$23,500 budget.
2. Setting Texas Architects' Week for April 13-20.
3. Accepting a recommendation by the Houston Chapter that the 16th annual TSA convention be held at the Shamrock Hotel in Houston November 2-4.
4. Hearing reports from key committees including plans for 1955.
5. Appointment of 1955 committee chairmen.

### More Headquarters Activity

Much of the expanded budget will allow more activity by TSA's new state headquarters at 327 Perry-Brooks Building, Austin, under John G. Flowers, Jr., executive director. The headquarters will concentrate upon increasing TSA's services to the general public in the state, and to the architectural profession.

Emphasis will be placed in 1955 on increasing overall TSA membership approximately 15-20% to a total of 1000.

### Committee Chairmen

Among new committee appointments to date by the Executive Board are the following: chairmen: architectural practice, J. Murrell Bennett, Dallas; awards and scholarships, Bartlett Cocke, San Antonio; collaboration with design profession, Joseph J. Patterson, Fort Worth; school buildings, Stayton Nunn, Houston; education, Professor Ernest Langford, College Station; preservation of historic buildings, Marvin Eichenraht, San Antonio; urban design and housing, Herbert Tatum, Dallas. All of the foregoing

are TSA-AIA committees of which the chairman is automatically the regional AIA representative on the corresponding national AIA committee.

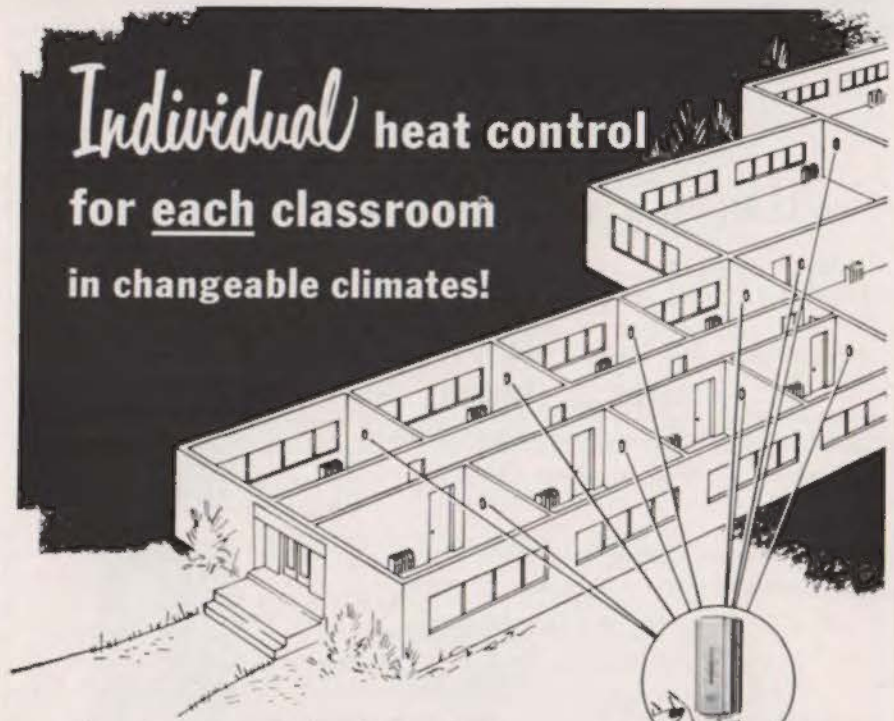
The following chairmen for TSA standing committees have been named: capitol plan, Karl Kamrath, Houston; Texas Construction Council, Preston M. Geren, Sr., Fort Worth; insurance, Harry D. Payne, Houston; legislative, R. Max Brooks, chairman and Louis F. Southerland, co-chairman.

### Meeting Set April 2

Other committee chairmen, and the personnel of all committees will be announced in the March issue of the TEXAS ARCHITECT.

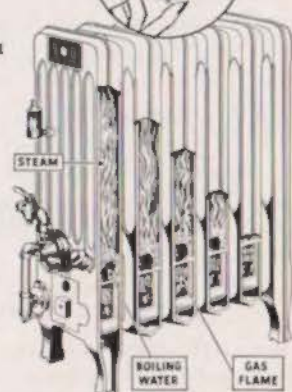
A meeting of the Publication Board for the TEXAS ARCHITECT was held in Austin immediately following the Executive Board meeting, and details of this appear in a separate news story.

The next meeting of the Executive Board will be held April 2 in Austin.



Each classroom can be heated independently, resulting in a substantial saving in fuel costs. You see, each GASTREAM RADIATOR is an independent steam-heating plant, requiring no steam or water connections, boiler or boiler room—only a small gas connection and a vent pipe are needed. Thus you save a considerable sum in the total cost of your heating plant. That's how CLOW GASTREAM RADIATORS will stretch your school budget. Add GASTREAM's independent operation saves fuel in still another way, too: the Radiators on the chilly windward side of a building keep going, while those on the warm sunny side turn off automatically!

Write today for full details of GASTREAM's healthful steam heat and how perfectly it meets the needs of the South's mighty school expansion program.



**MAKES ITS OWN STEAM HEAT WITH GAS**—Approved by the American Gas Association for use with City, Butane or Propane gas. Listed by Underwriters' Laboratories.

**JAMES B. CLOW and SONS**  
201-299 N. Talman Avenue Chicago 80, Illinois

**College Station Architect  
Named "Man Of The Year"  
By Chamber Of Commerce**

Ernest Langford, TSA-AIA, architect and professor of architecture at Texas A&M where he has headed the department for many years, has been named "Man Of The Year" for 1954



Ernest Langford

by the College Station Chamber of Commerce and Development Association.

Mr. Langford is chairman of the TSA education committee, and a

TSA director. He has served with distinction on many important AIA and TSA groups.

Currently mayor of College Station, Mr. Langford has been associated with College Station government since the city was incorporated in 1938. After four terms on the city council, he became mayor in April, 1942 and has served continuously in the office since that time.

**\$1,000 Debt In 1938**

During his tenure, Mayor Langford is credited with bringing College Station from an initial indebtedness of \$1,000 to the status of a municipality with city-owned properties of approximately \$500,000 and an annual budget of almost \$250,000. Under his administration the city has made

steady gains in improvements and growth. During 1954, Mayor Langford's administration successfully promoted a much-needed sanitary system.

**Detroit Steel Executive  
Named New President Of  
Producers' Council**

William Gillett, vice president of the Detroit Steel Products Company, Detroit, Mich., has been named president of the Producers' Council, the nation's largest organization of building material manufacturers.

Mr. Gillett succeeds Elliot C. "Jack" Spratt of Saint Joseph, Mo. as head of the Producers' Council, which has many members in its four principal Texas chapters in Houston, Dallas, Fort Worth, and San Antonio.



**DOOR CLOSER  
REPRESENTATIVES**

For information on LCN Closers concealed over the door, in the door, or in the floor, or exposed, call or write

for Eastern and Central Texas:

**JOHN J. HUGHES**

3106 Drexel Drive, Dallas 5, Texas  
Telephone LAKeside 5070



for Amarillo, Plainview, Lubbock,  
Lamesa, Midland and West:

**L. E. CLEAVINGER**

616 Mercantile Building, Denver 2, Colorado  
Telephone KEystone 4-7313



**Sparkling White Marble**

and 20 Other Colors  
for Roofing & Terrazzo

4 Shades of Green Now So Popular

We have an inventory of 100,000 bags; can fill orders for one or more colors immediately.

**DEZENDORF MARBLE COMPANY**

2800 E. 17th St.

PHONE 2-3440

AUSTIN, TEXAS

● *When you desire*  
**SERVICE**  
*in the form of*

**FURNITURE  
INFORMATION**

*or collaboration in*

**INTERIOR  
LAYOUTS**

*along with*

**GRAPHIC  
PRESENTATION**

*you - or your*

**CLIENT**

*are welcome to our*

**SHOWROOM**

*and*

**DESIGN  
DEPARTMENT**

*any time, with*

**NO OBLIGATION**

*Plan to visit* ●

**FINGER CONTRACT**

3131 Calhoun, Houston: AT 3441



**PUBLIC RELATIONS CHAIRMAN**—John W. Root, AIA, of Chicago, is chairman of the American Institute of Architects public relations committee which met for the first time in the South on January 31-February 1, in Houston.

### School Children To Learn About Architecture From New Teacher's Manuals

Your child will know as much about the architect and his functions as he does the family doctor's place in the community, when plans made by the national public relations committee of the American Institute of Architects in Houston recently materialize.

Headed by John W. Root, Chicago, the committee is working on a teacher's manual and similar materials to make the architect better known to all age groups in the nation. The committee met January 31-February 1 at the Shamrock Hotel in Houston.

It was the first time that the committee, one of several key groups within the AIA, has ever met in the South. Members came to Houston at the invitation of Karl Kamrath, Houston architect who is on the committee.

Mr. Root said that the committee had looked forward to meeting in Texas, "where architects have made so many outstanding contributions to our profession."

Committee members other than Mr. Root and Mr. Kamrath who were in Houston for the meetings included William S. Allen, San Francisco; Harold Sleeper, New York City; Harold Spitz-angle, Sioux Falls, S. D.; G. Thomas Harman, III, Columbia, S. C.; and Leon Chatelain, Washington, D. C., AIA treasurer, and Edmund R. Purves, also of Washington, AIA executive director, both ex-officio members.

Officials of the Houston Chapter honored the committee with a luncheon at the River Oaks Country Club.

### *Less than half the space*

Two-inch solid partitions of channel iron, lath and plaster occupy less than half the space of 2 x 4 stud partitions.

Lightweight, rigid and permanent, these partitions can be erected quickly and easily; the installed cost of labor and material is comparable to or less than that of other conventional partitions.

Two-inch solid partitions of channel iron, lath and plaster also combine versatility in design and adaptability in construction with unusually high shock resistance, fire safety, insulating values, and sound transmission rating.

## TEXAS BUREAU FOR LATHING & PLASTERING

607 Perry-Brooks Building

Austin, Texas

## SIGN OF QUALITY . . . PROOF OF POPULARITY



This sign, applied to IDEAL All-Wethr Window Units, is seen on thousands of homes being built throughout the South and Southwest. It symbolizes quality—not only of the windows it identifies—but of the home as well.

They are made of select wood—nature's own insulator—and efficiently weatherstripped, helping cooling and heating systems to do a far more effective job. And IDEAL All-Wethr Windows are Preservative Treated for extra long life.

Specify IDEAL All-Wethr Window Units in the homes you design.

Made by the makers of IDEAL Kitchens and IDEAL Panel Doors

## SOLD AT BUILDING MATERIAL STORES



### Texas Ceramics Plant Doubles Size

Aerial view of the Kilgore Ceramics Corporation plant at Kilgore. A current expansion program at the plant will more than double its size and increase by above 100% its output of vitreous china plumbing fixtures.

The ceramics industry is one of several basic industries in the state, utilizing native materials, which have been undergoing record expansion. The result is a constantly increasing number of building products added to Texas industrial output.

DISPLAY STUDY	ARCHITECTURAL MODELS
	
SCALE SIZE COLOR TEXTURE TO ORDER	construction service co 4907 ohio garden road no 2200 fort worth texas no 8968

### Two TSA Chapters Show Record Growth Pattern In Year Just Ended

Two TSA Chapters, the West Texas and the Southeast Texas, reported particularly strong percentage increases in membership to the TSA Executive Board in Austin.

West Texas, formed only in late 1953, has gone from six members to 15, with five additional applications for corporate membership and two for associate standing pending.

Southeast Texas, only one year old, began with 10 members and now has 26, with other applications in the offing.

TSA hopes to increase its overall membership to 1000 during 1955. This would involve a gain of about another 15-20% during the current year.

### Houston Architect Presides At National Fee Schedule Discussion

Houston architect David C. Baer, TSA-AIA, presided in Washington, D.C. recently at meetings aimed at setting a fee schedule for architectural work on government housing projects. Mr. Baer is chairman of the American Institute of Architects' national office practice committee, which met in a joint session with an AIA committee on liaison with the government and other experts considering the problem.

Also on the agenda of the Washington sessions were new AIA architect-owner agreements and architect-engineer agreements now under discussion.

While enroute to the East, Mr. Baer spoke Friday afternoon in Chapel Hill, N. C. before the North Carolina Chapter of the AIA. He discussed a new accounting system for architects which he has helped develop, and methods of improving architectural office practice.

## SPECIFY . . .

### PLAQUE and BUILDING LETTERS by

*The* **SOUTHWELL CO.**

# S

ART BRONZE DIVISION  
511 N. PRESA STREET  
SAN ANTONIO, TEXAS


- SCHOOLS
- CHURCHES
- HOSPITALS
- BANKS
- BUILDINGS



Since 1866 . . .

Quality with Service  
WRITE FOR CATALOG

## PROFESSIONAL DIRECTORY

<b>SOUTHERN INSPECTION SERVICE</b> ENGINEERS INSPECTION & TESTS	
P. O. Box 8633	3206 Houston Ave.
P. D. Barnard Mgr.	VA-6621
 Houston, Texas	

<b>TEXAS MODEL CO.</b>	
Professional Builders of Scale Models	
Promotional Models	
Engineering Studies	
Exterior and Interior Design Studies	
1003 Hyde Park	Houston, Texas
LI-1878	

*Classic, clean,  
contemporary  
buildings  
created with*

# **CORDOVA CREAM LIMESTONE**

*First National Bank,  
Huntington, Indiana,  
Architects: Stevens and Broderick*

**Cordova Cream Limestone  
Is Competitively Priced with  
Locally Quarried Stone**

When shipped in blocks and slabs by low cost water freight and fabricated by local cutstone contractors.

Write today for samples, detailed information and beautiful color showings of Cordova Cream Limestone. Let us show you how you can work profitably with a local cutstone contractor.



Here in the clean lines of this modern bank building, the classic beauty of Cordova Cream Limestone stands out sharply. With all its beauty it also gives an over-all effect of dignity and strength desirable in a financial institution.

This versatile stone has a natural warmth of color, ranging from cream to golden tints. It offers architects a wide latitude of design and decorative possibilities and at the same time gives them a building material that is unsurpassed for enduring strength. And because its natural beauty can't be duplicated — because it is always contemporary and always in good taste, it is a stone of unusual merit for residential, commercial and institutional buildings.

## **TEXAS QUARRIES, INC.**

**P. O. Box 91 • Austin, Texas**

Whitest by  
any  
standard

The extreme whiteness of Trinity White Cement is obtained by selection of raw cement-making materials which are remarkable for absence of color. There is no off-color cast in Trinity White to detract from the beauty of the finished structure.



Trinity is the *whitest* white cement judged by any standard. It is whitest in the bag . . . whitest in the mix . . . whitest in the finished job! You can see the extra whiteness with the naked eye! Trinity White is a true portland cement. It meets all Federal and ASTM specifications. Use it for architectural concrete units; stucco, terrazzo; cement paint; light-reflecting surfaces; mass or contrast; or wherever the purity of white and the purity of color tints is desirable in concrete or masonry. Trinity Division, General Portland Cement Co.



as white  as snow

. . . plain or waterproofed

**Trinity White**  
THE WHITEST WHITE CEMENT