

1
9
5
6

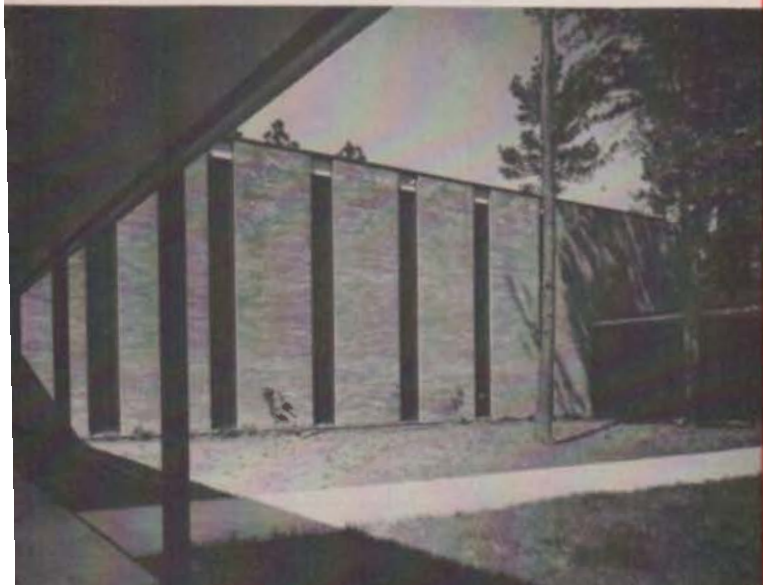
DECEMBER

TEXAS ARCHITECT

OFFICIAL PUBLICATION OF THE TEXAS SOCIETY OF ARCHITECTS

IN THIS ISSUE

- ◆ Fred J. MacKie
Named TSA President
- ◆ Summary of Convention
At Corpus Christi
- ◆ Holy Cross Lutheran
Wins Houston Award



The Parish Hall of the Holy Cross Lutheran Church in Houston has been selected by members of the Houston Chapter, TSA-AIA as representative of recent work in the Chapter area. The church also won a statewide TSA award in the "Texas Architecture—1956" competition. Architect: Paul H. Elliott, TSA-AIA of Houston.

Chrysler *Airtemp*

AIR CONDITIONING

**pioneered by Chrysler
engineered by Chrysler
to offer you the most
versatile line of air
conditioning & heating
equipment available today
for residential & commercial
building**

Air Accessories, Inc.

1400 Henderson
Fort Worth, Texas

Airtex, Inc.

1007 Waugh Drive
Houston, Texas

Baker Engineering Co.

P. O. Box 543
Lubbock, Texas

Caperton Refrigeration Co.

P. O. Box 3222
Tyler, Texas

Low-Temp Distributors

125 Lamar Street
San Antonio, Texas

Royalair Distributors

2122 Olive Street
Dallas, Texas

United Electric Service Co.

500 Galveston
Wichita Falls, Texas

Walsh Engineering Co.

Highway 75 North
Sherman, Texas



**for complete
information**

**CALL THE
AIRTEMP
DISTRIBUTOR
IN YOUR AREA**

with **GAS** built-ins—the world's
coolest, cleanest kitchens
sell for you!



only with GAS cooking can you offer—



- More Economy — Lower initial cost and lower operating cost year after year.
- More Features — Every automatic, time-saving feature is available.
- More Acceptability — Over 8 out of 10 women prefer to cook with GAS.
- More Selection — More models, arrangements and brands from which to choose.
- Cleaner — Cooler — Only GAS built-ins can be vented, offer closed-door broiling and instant-control burners leave less lingering heat.



ALUMINUM RAILINGS
BUILT BY YOUR LOCAL FABRICATOR
POST SP-11 FOR PLANK TREADS
DETAILS PAGE 9 CATALOGUE M-56

Blumcraft[®]
OF PITTSBURGH
480 MELWOOD ST. PITTSBURGH 13, PENNA.

Official Publication of
THE TEXAS SOCIETY OF ARCHITECTS

The Texas Regional Organization of The American Institute of Architects

David C. Baer, AIA-TSA, 1200 Bissonnet, Houston Editor
Patrick J. Nicholson Editorial Counselor
John G. Flowers, Jr., Perry-Brooks Building, Austin Managing Editor

PUBLICATION BOARD
THE TEXAS ARCHITECT

David C. Baer, Chairman, TST-AIA Houston
Lee R. Buttrill, TSA-AIA Beaumont
Max Brooks, TSA-AIA Austin
Terrell R. Harper, TSA-AIA Dallas
Albert S. Golemon, TSA-AIA Houston
Nolan Barrick, TSA-AIA Lubbock
Edward L. Wilson, TSA-AIA Fort Worth

Chapter Representatives

Brazos William E. Nash
Central Texas Eugene George
Coastal Bend Walter Wilde
Dallas Jack Corgan
El Paso William Wuehrmann
Fort Worth Edward L. Wilson
Houston Harwood Taylor
Lower Rio Grande Valley Walter Bowman
North Texas Glynn Harris
Panhandle John Ward
San Antonio Leo Diehlmann, Jr.
Southeast Texas Lee Buttrill
West Texas Woodlief Brown

TEXAS SOCIETY OF ARCHITECTS
OFFICERS

R. Max Brooks, President Austin
Fred J. MacKie, Vice-President Houston
Reginald H. Roberts,
Second Vice-President San Antonio
Louis F. Southerland, Secy.-Treas. Austin
John G. Flowers, Jr., Exec. Director Austin
Directors

William E. Nash Brazos Chapter
W. O. Gustafson Central Texas Chapter
Walter E. Wilde Coastal Bend Chapter
Terrell R. Harper Dallas Chapter
William G. Wuehrmann El Paso Chapter
Robert P. Woltz, Jr. Fort Worth Chapter
Thompson McCleary Houston Chapter
W. C. Baxter Lower Rio Grande Chapter
Glynn L. Harris North Texas Chapter
O. L. Puckett Panhandle Chapter
Charles Huie, Jr. San Antonio Chapter
R. C. Heartfield Southeast Texas Chapter
David S. Castle West Texas Chapter
Grayson Gill Immediate Past President
Albert S. Golemon A.I.A. Director

Published monthly by the Texas Society of Architects in Houston. Subscription price, 50c per year, in advance. Copyrighted 1951 by the T.S.A., and title registration applied for with the U. S. Patent Office.

Editorial contributions, correspondence, and advertising invited by the Editor. Due to the nature of the publication, editorial contributions cannot be purchased. Publisher gives permission for reproduction of all or part of editorial material

herein, and requests publication credit be given THE TEXAS ARCHITECT, and author of material when indicated. Publications which normally pay for editorial material are requested to give consideration to the author of reproduced by-lined feature material.

Appearance of names and pictures of products and services in either editorial copy or advertising does not constitute an endorsement of same by either the Texas Society of Architects or the American Institute of Architects.

THE ARCHITECT AND HIS COMMUNITY

Walter T. Ralfe, TSA-FAIA of Houston, who served as moderator of the seventeenth annual convention of TSA at Corpus Christi November 1-2, has caught the entire spirit of the convention theme, "The Architect and His Community" in summarizing the seminar sessions.

Mr. Ralfe states: "In each community, whether the village, town, city or nation, there is always a unique opportunity for improvement, future planning, and the enlarged concept of community development. The architect and his planning profession see in these raw resources greater opportunities than do most lay people. It is, therefore, his personal duty to his community to point out these opportunities and to stimulate proper leadership in the development of these resources for improved environment, beautification, and social progress."

This admirably states one of the great opportunities for service which is open to the architect in every community. The full text of Mr. Ralfe's summary, as well as several papers at the convention which are being made available, should be studied not only by every architect in Texas, but by everyone concerned with community progress — which means of course every Texan.

The President's Letter

By

R. Max Brooks
TSA-AIA
President,
Texas Society
of Architects



In a few weeks, my term as president of the Texas Society of Architects will have ended. As you will note in news articles in this issue, Fred J. MacKie of Houston becomes TSA president on January 1, with Reginald H. Roberts of San Antonio, vice-president, and Robert P. Woltz of Fort Worth, second vice-president.

This has been a pleasant and a stimulating year, at the head of a rapidly growing and active group of more than 1000 architects. There have been some significant accomplishments during the 12 months just past, among them the excellent convention just concluded in Corpus Christi with a very fine total registration in excess of 600. I must credit the progress made in 1956 to the exceptional group of men who served with me as officers and as members of the board of directors of TSA. They, with the local Chapter officials over Texas, are primarily responsible for continual gains toward making the architects of this state of maximum service to its people.

Our TSA headquarters staff in Austin, headed by John G. Flowers, Jr., executive director, also deserves great credit for TSA's continued progress in 1956.

Looking ahead to 1957, the centennial year of the American Institute of Architects, with what should be an exceptionally fine exhibit of "Texas Architecture—1957" as well as our annual TSA convention in Dallas, I know that Mr. MacKie will have a most successful term of office. Again my thanks to all for their help in 1956.

Registration Hits 600 For TSA At Successful Corpus Christi Convention

MacKie, Roberts, Woltz,
Fehr Named To Head
Society In 1957

TSA held one of its most successful conventions in Corpus Christi November 1-2, with Fred J. MacKie of Houston named president to succeed R. Max Brooks of Austin at the conclusion of the two-day sessions attended by more than 600.

The theme of the convention, "The Architect & His Community", was emphasized in a series of fine addresses and seminars.

The keynote speaker, Keen Johnson of Louisville, Ky., vice-president of Reynolds Metals Company and former governor of Kentucky, got the convention off to a splendid start after particularly fitting remarks by Walter T. Rolfe, TSA-FAIA of Houston, moderator.

Governor Johnson traced the long history of architecture as a factor in shaping changing civilizations. He noted how the genius of the architect leaves its stamp upon every era, making the practitioner of this ancient profession capable of having a tremendous effect upon the community.

RECORDED MOSES ADDRESS

At the first luncheon session, the feature was a recorded address by Commissioner Robert Moses, one of the most interesting and provocative speakers of today. American Institute of Architects President Leon Chatelain of Washington, D. C., also gave a splendid talk emphasizing how the nationwide program of the AIA helps the individual architect to render better services to his community.

W. H. Sindt of Fort Worth, regional administrator for the Housing Home Finance Agency, opened the first afternoon seminar session with an informative address on urban renewal. Mr. Sindt's well-documented talk was of particular interest because Corpus Christi is the first city in Texas to take advantage of Federal funds to underwrite local studies in urban renewal.

SPLENDID SPEECH BY CONTRERAS

Carlos Contreras, the noted Mexican architect, followed with a particularly fine address on the place of the Latin-American architect in his community. Mr. Contreras, whose work is internationally known, gave a witty and knowledgeable talk which was one of the features of the convention. He revealed a deep understanding of the



New TSA Officials

These men were named to head TSA in 1957 at the Corpus Christi convention. Left to right: Reginald H. Roberts, San Antonio, vice-president; Fred J. MacKie, Houston, president; Arthur Fehr, Austin, secretary-treasurer; and Robert P. Woltz, Fort Worth, second vice-president. All four will take office January 1.

importance of community activity for the architect in any land.

The first day's formal program concluded with a lecture by Ralph Myers, AIA of Kansas City, on "Architecture—Mexico." Mr. Myers' excellent presentation, illustrated with new color slides which are to be the basis for a forthcoming film, was unfortunately marred by technical difficulties.

SPEECH BY HENRY L. WRIGHT

Friday's opening seminar session began with an exceptional address by Henry L. Wright, FAIA of Los Angeles, speaking on an architect in his community. Mr. Wright, a particularly effective speaker, discussed the theme of the convention in terms of community participation by Los Angeles practitioners. His remarks were then taken up by a panel composed of Mr. Chatelain and other AIA officials including John Richards, vice-president; Raymond Kastendieck, treasurer; Edward L. Wilson, secretary; and Edmund Purves, executive director.

The traditional awards luncheon was held Friday. Certificates were presented to all "Texas Architecture—1956" winners (announced with pictures in November, 1956 issue) and to student winners in various competitions which are separately covered in this issue.

FULL SOCIAL SCHEDULE

The convention closed with a seminar on architectural education, featuring Phillip Creer of Texas University, Theo Holleman of Texas A & M, Richard Lilliott of the University of Houston, James C. Morehead, Jr. of Rice Institute, and Robert I. Lockard, Texas Tech, and the final business session and election of officers.

A full social schedule including a golf tourney, two cocktail parties, a costume party, and the traditional President's Dinner-Dance was enjoyed by delegates and their wives.

The 1957 TSA convention was voted for Dallas.

Five Awards Given By Texas Concrete Masonry Association

Five \$150 awards to architectural students were announced at the Corpus Christi convention by the Texas Concrete Masonry Association.

Recipients were: Texas A & M, Kirby M. Keahey (Mr. Keahey was also the grand prize winner in the Clay Products Association of the Southwest competition); Rice Institute, John M. O'Brien; Texas Tech, Bill Jackson; University of Houston, Donald Minzenmayer; and Texas University, individual winner to be named later.

**Summary of Remarks
by Walter T. Rolfe**
TSA-FAIA, moderator at TSA Convention Seminars

The architect, because of his training, travel, experience, and his practice, is in a unique position to be unusually helpful in his community. The community as defined by this seminar is a body politic, whether village, town, city, county, or state. In the larger sense, it also means nations and communities of nations. It really means little how small or large—the spirit is the same.

I think of the Latin American world also as a community composed of people from South, Central and North America. We have so much in common. We are all part of a great new western world—a world rich in resources, tremendous areas of land, and a heritage of strong desire for freedom. That is why this convention has invited its Latin American neighbors to participate in the seminars on this timely subject. The uniqueness of the concept of the architect in his community in the Americas we now emphasize.

UNIQUE OPPORTUNITY EXISTS

In each community, whether the village, town, city, or nation, there is always a unique opportunity for improvement, future planning, and the enlarged concept of community development. The architect and his planning profession see in these raw resources greater opportunities than do most lay people. It is, therefore, his personal duty to his community to point out these opportunities and to stimulate proper leadership in the development of these resources for improved environment, beautification, and social progress.

The architect enjoys several relations with his community. First, he is the practitioner or the teacher. His own integrity in practice, both of these fields being assumed as practice, is one of inspiration. He is a planner and a creator of beautiful environment. He solves the problems of his clients and their community within their needs and abilities to pay.

The next contribution of the architect in his community is that beyond his personal practice. In this area he is a living illustration through his attitudes, his character, and his personality. Here again he affords a contribution above the normal toward the

public interest and welfare. Through these contributions, he becomes a friend of the community and is looked upon with dignity, respect, and honor. He is looked to for inspiration and guidance. He is enjoyed by his neighbors. The leadership of the community looks to him. His ideas are sought and his counsel followed where he has found the secret of the way to offer his talents and services.

ARCHITECT AS GUIDING SPIRIT

The community should always be appraising its assets toward major master planning for its future. How can it accomplish its real mission? What are its unique human and natural resources? What of the development of those resources? All these and many more major questions arise in the natural life of any community. It is at this point the architect can be of very great service in helping to plan for the proper use of these resources in the long range plan of his

community. He can be the guiding spirit for the community. This does not mean that he should engage in politics to accomplish these ends. He probably could do better to remain as counsel for all groups rather than the crusader for one. He becomes more of the contributor to the stature of the profession by remaining independent and impersonal, but interested and active.

There is a fine career in any community for the architect. He simply needs to go there, live and perform. Whether the community be a small town, a medium city, or a large city, the opportunity still exists.

GREAT OPPORTUNITIES FOR SERVICE

Once he has selected his community, he should take a sharpened and intelligent interest in all of its affairs. He should work on public relations programs for the betterment of the community, again keeping the human touch. His counsel must be sought rather than be promoted by him. This means the taking of more time and the having of greater patience. Once he has helped the com-

(Continued on page 9)



Featherlite Competition Winner

Key Kolb, Jr. of Texas A & M College was grand prize winner in the \$2500 Featherlite Corporation competition, results of which were announced at the Corpus Christi convention. The grand prize carried a cash award of \$500.

Second prize at the convention went to the University of Houston, and third prize to Texas A & M.

Individual prize winners at the various competing schools were as follows:

Texas A & M: John O. Greer, first; Mr. Kolb, second; W. A. Shenland, third.

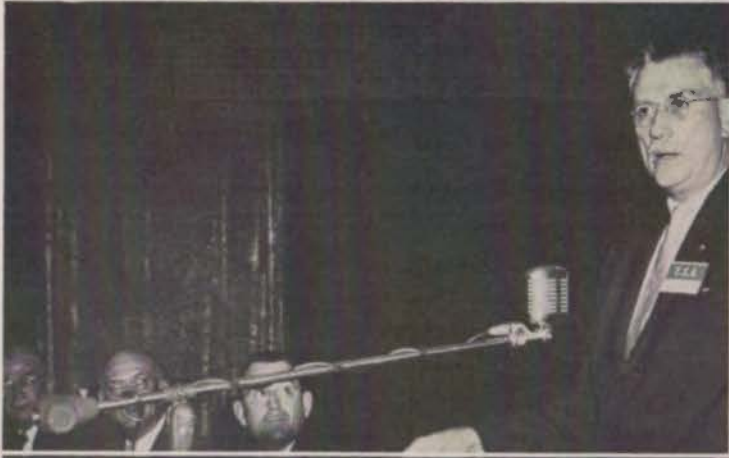
University of Houston: Leon Chambers, first; John McMahon, second; Joe Savarino, third.

Rice Institute: Iris Lawrence, first; O. E. Drennan, Jr., second; Thomas L. McKittrick, third.

University of Texas: A three-way tie between Eugene T. Holden, William T. Odum and Morgan Raines.

Texas Tech: Dick Reagan, first; Darrell Smith, second; Leon Harp, third.

Scenes From 17th Annual Conventi



1. "Shipwreck" party
2. President's Dinner-Dance
3. AIA President Chatelain at awards luncheon
4. Opening reception
5. Featherlite winners
6. More shipwrecked sailors
7. Group at Friday dinner-dance

on Corpus Christi - - November 1 & 2



1. Another shipwreck crowd
2. TSA President Brooks opens convention
3. Keynote Keen Johnson
4. Carlos Contreras and Moderator Walter T. Rolfe
5. Still more shipwreckees
6. First night party
7. Crowded seminar session



All pictures by Jimmy Loughhead of Dallas for Featherlite Corporation



ACOUSTICAL FASTENING MEMBERS

proved design

Made in Texas

low freight rates

Kelley's acoustical fastening members offer a proved design backed up by one of the Southwest's largest stamping and roll forming companies. You get more than a design that is engineered to do the job. You get more than on-time delivery. Your clients benefit from low freight charges. Made in Houston, so you can be sure of good delivery, plus the advantage of lower delivery costs. Write for descriptive folder, or ask to have a Kelley engineer discuss acoustical fastening members with you.

Kelley

MANUFACTURING CO.

4800 CLINTON DRIVE — HOUSTON

134 Ellis Bean Street — San Antonio

9100 Ambassador Row — Brook Hollow Industrial District — Dallas

ADVERTISED IN

LIFE

Better Homes
and Gardens



TRADE MARK • SCPI

Service Makes the Difference



BRICK COMPANY

7007 Grapevine Hgwy.

Fort Worth, Texas

AT 4-4622 AT 4-1340

In Abilene In Wichita Falls

301 S. Fifth

3907 Lawrence Road

2-8952

7-6422

50

years of experience

stand behind every job!

**asphalt
and concrete**

Residential • Industrial
Streets • Parking
Lots • Drive-Ins

The skill and experience gained in 50 years of better paving throughout Texas and the Southwest are your guarantee that if it's paving by Texas Bitulithic Company, it's paving you can depend on to last. Let one of our salesmen-engineers show you how paving by Texas Bitulithic Company can save you money.



TEXAS



BITULITHIC COMPANY

**Fresh
Ideas**

Imagination Unlimited

Our design department will collaborate closely with you all along the line... to see that the final appearance of interiors is tasteful and appropriate to overall construction and design. Graphic presentations furnished, no obligation. Many exclusive lines of furniture. Visit our show rooms with clients anytime!

**in
Interiors**

**designed and
furnished by
Finger
Contract Co.**

**Complete
Decorating and
furnishing for
all commercial
Installations**

**Finger
Contract
Supply Co.**

**HOUSTON: 3131 Gulf Freeway
- CA 8-3441
DALLAS: 965 S. Lamar
- PR-2850**

Representative Selection, Houston Chapter, AIA

PROJECT: Parish Hall for the Holy Cross Lutheran Church, Houston, Tex.

ARCHITECT: Paul H. Elliott, AIA-TSA, Houston.

The Holy Cross Lutheran Church was established as a mission in the fall of 1954. A heavily wooded site of approximately 3.5 acres was purchased in a residential suburb of Houston as the permanent location.

Immediate sanctuary space, Sunday School rooms and offices were to temporarily serve until larger facilities are needed.

FIRST UNIT SERVES 300

The first unit, consisting of the Parish Hall, classrooms, offices, kitchen and rest room is designed to serve an operating parish of approximately 300. The Parish Hall, as illustrated here, was provided with a spiritual quality so it might easily remain as a permanent sanctuary, if desired, yet also be used in the future for meetings, parish dinners, etc. The classroom wing, situated adjacent to the kitchen, is also to be converted at a later date into a Women's Parlor.

With these thoughts in mind, the problem of the overall master scheme was approached and a scheme was established by which the Parish may grow as required. The site is situated

at the intersection of two prominent thoroughfares. The future main sanctuary will be located with the apse to the required east orientation and it will become the predominant structure at this corner. The main access to the property is away from the busy intersection and the offices, classrooms and other activities are at the interior of the site. It is planned that future additions will be centered around a rather formal mall with reflecting pool and bell tower serving as the focal point. All parking will be off-street and to the less desirable interior periphery of the site. Children's activities, playgrounds, and social functions will all be contained internally within the site.

"L"-SHAPED UNIT

The "L" shape of the first unit permits easy expansion to the east, unless the kitchen in the hub of the plan so that it may serve in both directions, and leaves the sanctuary isolated so that it may either remain as a chapel for future worship or be converted into a Parish Hall. The requirement for all-masonry construction was followed, the main higher unit being constructed of a 6-inch concrete block wall veneered both sides.

The walls support a steel joist framed roof covered with a pyrofill deck and built-up roofing. The lower wing is built up of 8-inch solid brick with a trussed wood roof. The floors

Manufacturers of 24 Colors for Terrazzo and Roofing.

Featuring Sparkling Texas White.

DEZENDORF MARBLE COMPANY



2900 E. 17th ST. P. O. BOX 6032 AUSTIN, TEXAS

throughout are common brick laid in a basket weave pattern, stained and waxed. The use of masonry floors proved economical and practical, as well as attractive. Interior panelling and doors are of ribbon stripe mahogany and ceilings are of 12 x 12 acoustical tile. The tall windows in the sanctuary are of redwood framing constructed on the job and glazed with three colors of art glass, producing a most unusual and spiritual interior.

EXTREMELY LOW BUDGET

An extremely low budget meant that symbolism and ornamentation would have to be held to a minimum. The internal feeling within the sanctuary is one of quite restfulness and simplicity. The very simple requirements of altar, communion rail, and pulpit lent themselves to a simple and economical solution. The curved white brick wall serves as the focal point and spiritually symbolizes the universal concept of Christianity, the center of which, is the symbolic cross. The suspended cross, which may be removed at a later date, is made of wood with an over-laid gold cross.

The cross, candles, altar, pulpit, baptismal font, and communion rail were all designed by the architect and were made and donated by the members of the congregation.

TWO AWARDS GIVEN

This project was recently awarded a Medal of Honor by the Houston Chapter, AIA, in its 1956 annual awards program and subsequently it received an Honor Award in Texas Architecture—1956 which is an annual competition conducted jointly by the Dallas Museum of Fine Arts and the Texas Society of Architects.

The Parish Hall was completed in November of 1955. Bailey Johnson was the general contractor, and Walter P. Moore served as consulting engineer. Much of the success of this first unit was due in a major sense to the full cooperation of a very understanding and sympathetic pastor with the architect.

SEMINARS

(Continued from Page 5)

munity through public appearances, speeches, dissemination of ideas, willingness to point the way toward betterment of the community life, he soon will find acceptance of himself first. Then comes the acceptance of his ideas in a natural sequence.

There is no profession in existence that offers a greater opportunity than architecture for this kind of public service. Architecture is not an art that is practiced in the court room, in the clinic or hospital, or in the office. It is practiced in the streets, market places, highways, and byways of public life. The architectural profession is unique in that it offers these added leadership opportunities simply for the taking. The architect must want to do these things and with a willingness shown on his part, the community will soon recognize his talents and his contribution. Whether they be the practical, imaginative, inspiring, or overdone, they will be recognized for what they are and probably accepted about as they deserve.

Texas A & M Wins Grand Prize in 1956 Clay Products Awards

Kirby M. Keahey of Texas A & M College won the \$400 grand prize in the 1956 Clay Products of the Southwest Association awards announced at the Corpus Christi convention. Second prize went to John P. Doyle, University of Houston.

Mr. Keahey was also the individual winner at Texas A & M, as was Mr. Doyle at the University of Houston.

Other awards announced by Dick Taylor of Austin, executive director of the Association, follow: Rice Institute, Benjamin R. Waller, Jr.; University of Texas, Joe Hoover; and Oklahoma A & M, Ken Russo.

Gundall Wooten Dormitory
for Men, Austin
Jessen, Jessen, Millhouse
& Greeven, Austin

Another example of ALUMAR'S wonderful Aluminum SLIDING PANELS . . . functional beauty with its clean lines . . . gives maximum performance under constant use.

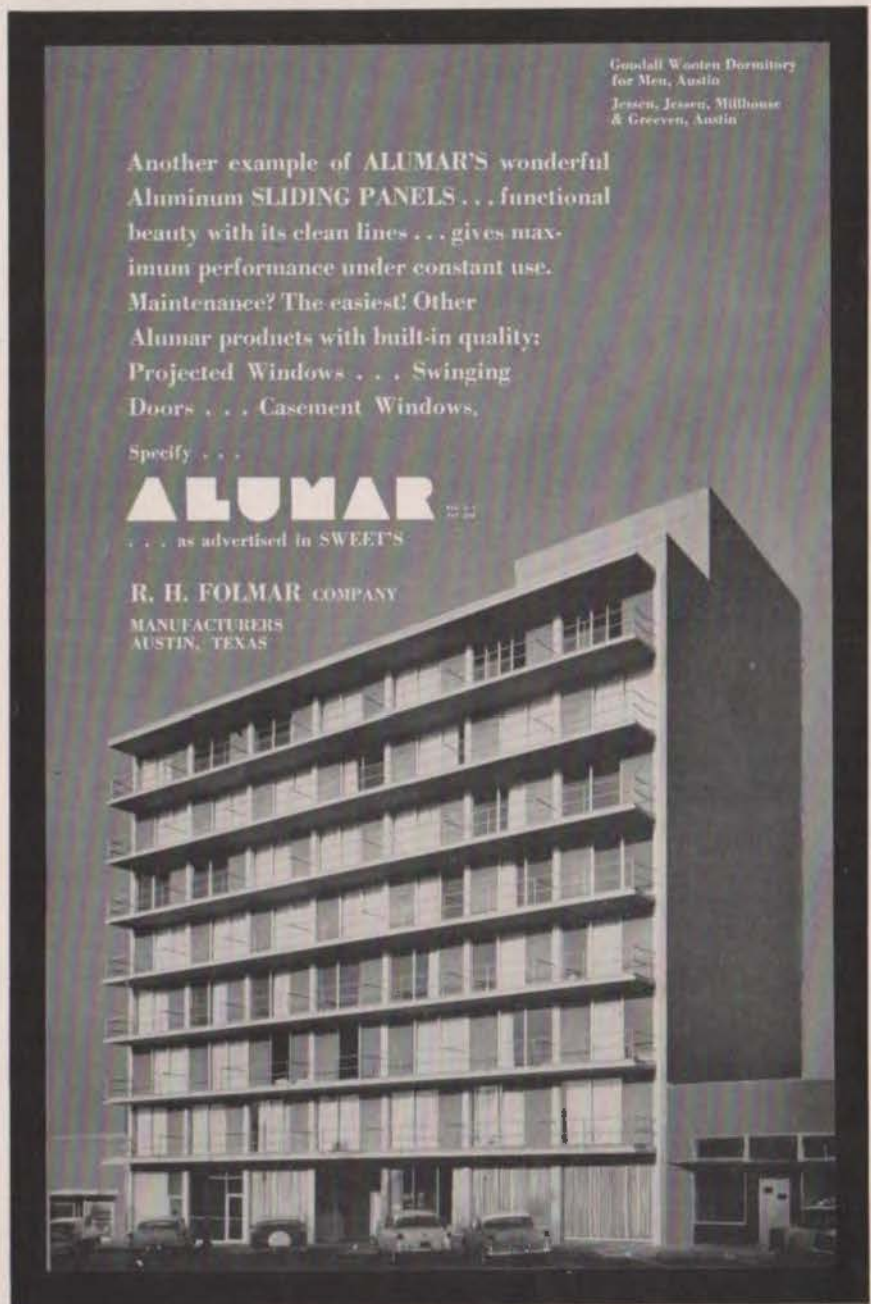
Maintenance? The easiest! Other Alumar products with built-in quality: Projected Windows . . . Swinging Doors . . . Casement Windows.

Specify . . .

ALUMAR 

. . . as advertised in SWEET'S

R. H. FOLMAR COMPANY
MANUFACTURERS
AUSTIN, TEXAS



JEFF JOHNSON

THE STORY:

Jeff has had a showdown with R.C. Forsythe, Sr., a key figure in the local opposition to city planning and has stormed out of the office in anger, and meets his friend, Bob Forsythe, Jr., and his father....

JEFF! NOBODY SPEAKS TO MR. FORSYTHE THAT WAY! THAT WAS A BAD MANUEVER!

IT DOESN'T LOOK GOOD, JEFF! — DAD IS ANGRY!



IT'S ABOUT TIME SOMEBODY DID TALK TO HIM, AND CITY PLANNING IS WORTH TALKING ABOUT!



JOHNSON! SEND THAT SON OF YOURS BACK IN HERE!

PRIVATE



GO ON, JEFF!

WE'LL GO IN TO BACK YOU UP!



YES!

JEFF, IT'S BEEN A LONG TIME SINCE ANYONE TALKED TO ME LIKE YOU JUST DID!



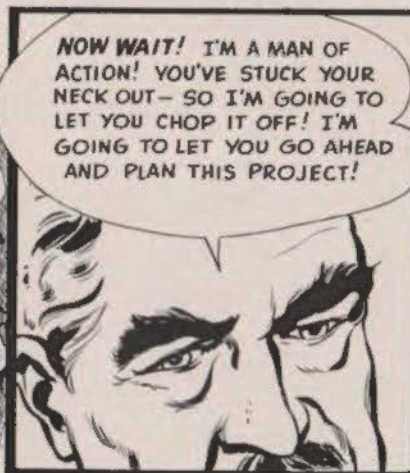
David Baer

YOU'VE GLORIFIED THIS CITY PLANNING TO IMPOSSIBLE PROPORTIONS! NOTHING CAN BE THAT GOOD!

BUT YOU'RE WRONG! I CAN PROVE.....



NOW WAIT! I'M A MAN OF ACTION! YOU'VE STUCK YOUR NECK OUT— SO I'M GOING TO LET YOU CHOP IT OFF! I'M GOING TO LET YOU GO AHEAD AND PLAN THIS PROJECT!



THAT'S ALL WE ASK! JUST THE CHANCE! PLANNING WILL PROVE ITS WORTH!



NOW DON'T MISUNDERSTAND ME, I'M ONLY LETTING YOU GO AHEAD TO SHOW THIS THING UP ONCE AND FOR ALL!

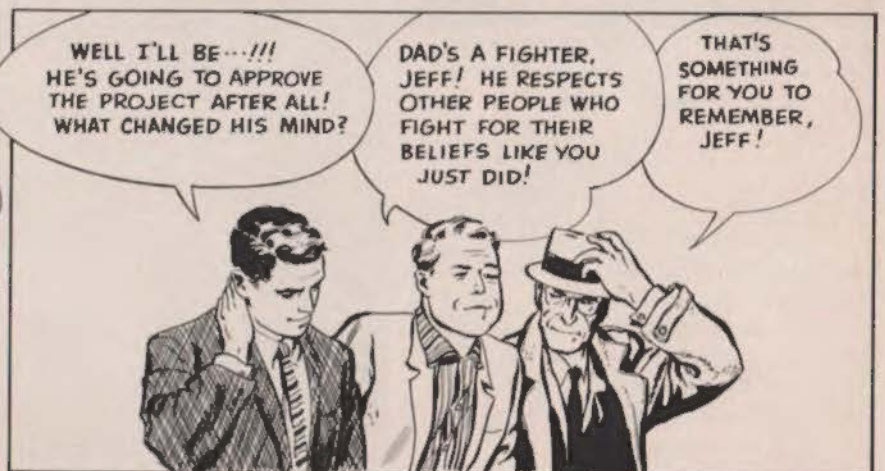
NOW GET OUT, ALL OF YOU!



WELL I'LL BE...!!! HE'S GOING TO APPROVE THE PROJECT AFTER ALL! WHAT CHANGED HIS MIND?

DAD'S A FIGHTER, JEFF! HE RESPECTS OTHER PEOPLE WHO FIGHT FOR THEIR BELIEFS LIKE YOU JUST DID!

THAT'S SOMETHING FOR YOU TO REMEMBER, JEFF!



THINK IT'S WORTH 1¢ per sq.ft.* TO PREVENT MORTAR LEAKS?

That's all it takes—just 1¢ per sq. ft. in an 8" width wall—to get integral leak protection with Horn's Hydratite® Plus. When added to mortar, this concentrated powder reduces water absorption and initial shrinkage. The mortar stays workable on the brick . . . insures perfect contact and complete hydration.

Hydratite Plus gives you this outstanding water protection by anchoring the mix water to the cement, sand and lime particles with a bond greater than the suction of the brick. The result is a tighter wall with far better adhesion between the mortar and bricks.

You get similar protection for concrete applications with a related Horn product—Hydratite. For A.I.A. Specification Data on "built in" leak protection with Hydratite and Hydratite Plus, write on your company letterhead:

*in an 8" wall

Plants:

Houston
Long Island City
Los Angeles
San Francisco
Toronto



A. C. Horn Companies

Subsidiaries & Divisions

Chemical Corporation

P.O. Box 2585, Houston, Texas

Sales Offices
and Warehouses
throughout the
United States
and Canada

DIVISIONS OF SUN CHEMICAL CORPORATION

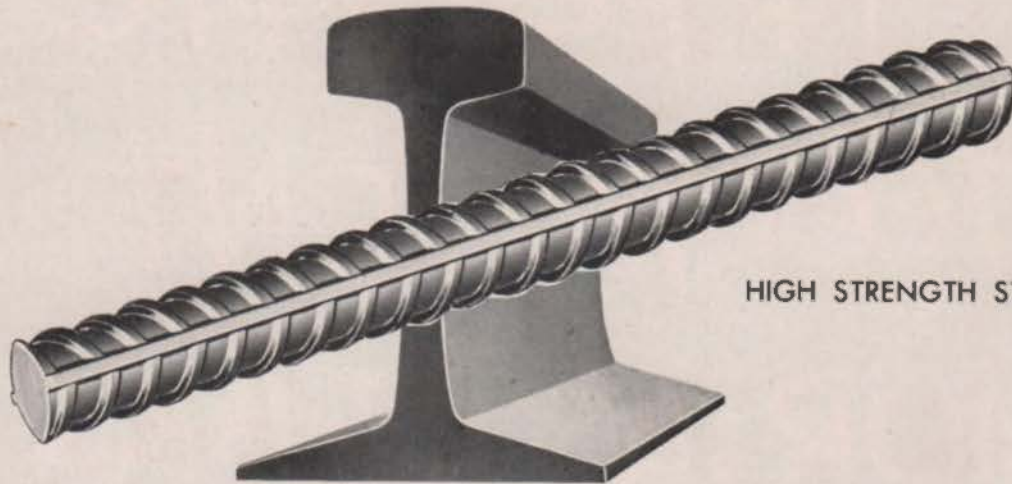
HORN (paints, maintenance and construction materials, industrial coatings) • WARWICK (textile and industrial chemicals) • WARWICK WAX (refiners of specialty waxes) • RUTHERFORD (lithographic materials, equipment) • SUN SUPPLY (lithographic supplies) • GENERAL PRINTING INK (Sigmund Ulman • Fuchs & Lang • Eagle • American • Kelly • Chemical Color & Supply Inks) • MORBILL (news inks) • ELECTRO-TECHNICAL PRODUCTS (coatings and plastics) • PIGMENTS DIVISION (pigments for paints, plastics, printing inks of all kinds) • OVERSEAS DIVISION (export) • A. C. HORN COMPANY, LIMITED (Canada) • GENERAL PRINTING INK CORPORATION OF CANADA, LIMITED • FUCHS & LANG de MEXICO, S. A. de C. V.

TEXAS ARCHITECT
Box 1733
FORT WORTH, TEXAS
Form 3547 Requested

Section 34.66 P. L. & R.
U. S. POSTAGE
PAID
FORT WORTH, TEXAS
PERMIT No. 2037

Yuletide Greerings to

TEXAS ARCHITECTS



HIGH STRENGTH STEEL

Specify
**TEXAS
HI-BOND**

TEXAS STEEL CO.

FORT WORTH, TEXAS



Member Rail Steel Bar Association