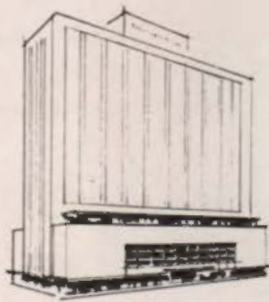


TEXAS ARCHITECT

OFFICIAL PUBLICATION OF THE TEXAS SOCIETY OF ARCHITECTS

STATE HEADQUARTERS FOR TSA
WHAT IS A CHURCH BUILDING?
PLANNING FOR TSA CONVENTION
CONSTRUCTION BOOM CONTINUES

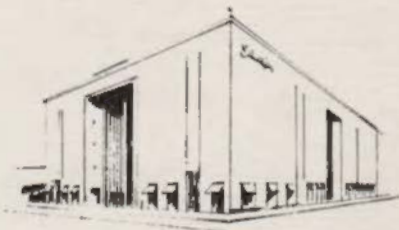
**AUGUST
1954**



Floored for Good!

In recent years, floors of Wright Rubber Tile have been specified in many hundreds of buildings in the Houston area alone . . . among them Texas National Bank Bldg., Golemon and Rolfe Professional Bldg., Prudential Bldg., Sakowitz Bros., Texas Children's Hospital, Battelstein's, San Jacinto Building, Humble Research Center and many, many others.

Here is proof of Wright's unsurpassed quality, beauty, durability and easy maintenance.



**WRIGHT
RUBBER TILE**

The 100-Year Floor!

WRIGHT MANUFACTURING CO.
5201 POST OAK RD. - HOUSTON, TEXAS

INSIDE THE TEXAS ARCHITECT

State Headquarters For TSA	3
What Is A Church Building	4
Construction Boom Continues	7
New Products	9
Plans for TSA Convention	12

THE TEXAS ARCHITECT

VOLUME 5 AUGUST, 1954 NUMBER 4

Official Publication of

THE TEXAS SOCIETY OF ARCHITECTS

The Texas Regional District Organization of
The American Institute of Architects

David C. Baer, AIA-TSA Editor
1200 Bissonnet, Houston

John G. Flowers, Jr., Managing Editor
Perry-Brooks Building, Austin, Texas

George Kirksey & Associates Editorial Counselors
2244 W. Holcombe, Houston

PUBLICATION BOARD

David C. Baer, Chairman, TSA-AIA Houston

Edwin W. Carroll, TSA-AIA El Paso

Lee R. Buttrill, TSA-AIA Beaumont

Albert S. Golemon, TSA-AIA Houston

James C. Morehead, Jr., TSA-AIA Houston

Reginald Roberts, TSA-AIA San Antonio

Edward L. Wilson, TSA-AIA Fort Worth

TEXAS SOCIETY OF ARCHITECTS OFFICERS

Edwin W. Carroll	President
1001 E. Yandell, El Paso	
Grayson Gill	Vice-President
1913 San Jacinto, Dallas	
R. Max Brooks	Second Vice-President
205 E. 8th Street, Austin	
Louis F. Southerland	Secretary-Treasurer
602 West Avenue, Austin	
John G. Flowers, Jr.	Executive Director
Perry-Brooks Building, Austin, Texas	

DIRECTORS

Macon O. Carder	Amarillo
Panhandle Chapter, A.I.A.	
Arthur Fehr	Austin
Central Texas Chapter, A.I.A.	
A. B. Swank, Jr.	Dallas
Dallas Chapter, A.I.A.	
Robert P. Woltz, Jr.	Fort Worth
Fort Worth Chapter, A.I.A.	
Reginald Roberts	San Antonio
San Antonio Chapter, A.I.A.	
C. P. Donnelly	Corpus Christi
Coastal Bend Chapter, A.I.A.	
Eugene Werlin	Houston
Houston Chapter, A.I.A.	
Warren C. Suter	Mission
Lower Rio Grande Chapter, A.I.A.	
William G. Wuehrmann	El Paso
El Paso Chapter, A.I.A.	
Ernest Langford	Bryan
Brazos Chapter, A.I.A.	
David S. Castle	Abilene
West Texas Chapter, A.I.A.	
R. C. Heartfield	Beaumont
Southeast Texas Chapter, A.I.A.	
Albert S. Golemon	Houston
A.I.A. Director	

Published monthly by the Texas Society of Architects in Houston and mailed without charge. Copyrighted 1951 by the T.S.A., and title registration applied for with the U. S. Patent Office. Editorial contributions, correspondence, and advertising invited by the Editor. Due to the nature of the publication, editorial contributions cannot be purchased. Publisher gives permission for reproduction of all or part of editorial material herein, and requests publication credit be given

THE TEXAS ARCHITECT, and author of material when indicated. Publications which normally pay for editorial material are requested to give consideration to the author of reproduced by-lined feature material. Appearance of names and pictures of products and services in either editorial copy or advertising does not constitute an endorsement of same by either the Texas Society of Architects or the American Institute of Architects.

CALENDAR OF EVENTS

November 3-5—15th annual convention, TSA at Fort Worth.

February 7-11—UHAS symposium at University of Houston.



4 sales aces

Here at Associated, in addition to high quality Douglas fir plywood, we manufacture specialty panels that present new sales and profit opportunities to you. They are:

SEA SWIRL decorative fir plywood. Interior and exterior.

KNOTTY SEA SWIRL decorative fir plywood. A companion product to select *Sea Swirl*.

BIRCH faced plywood with solid cores. In standard size panels, $\frac{1}{4}$ " and $\frac{3}{4}$ " thickness.

PHILIPPINE MAHOGANY faced plywood with solid cores. A companion product to Birch faced panels.

APMI quality plywood products are available at company warehouses, and through selected independent jobbers. Your inquiries are welcomed.

All car load sales and shipments of Associated Plywood Mills, Inc., plywood for this territory are handled by our Dallas, Texas office at 4814 Bengal Street—Telephone Logan 6647—Deryl Glosup, Manager.



ASSOCIATED PLYWOOD MILLS, Inc.

General Offices: Eugene, Oregon / Plywood plants at Eugene and Willamina
Lumber mill at Roseburg

STATE HEADQUARTERS FOR TSA

With the opening of state headquarters in the Perry-Brooks Building in Austin on July 15, the Texas Society of Architects enters into another phase of increased service to the people of Texas and to the architectural profession.

After many months of preparation, John G. Flowers, Jr., executive director of TSA, is now established in the new offices in the state capital. He and Mrs. Flowers and their two young sons are preparing to build a new home in Austin, after six months at temporary TSA offices in Houston during which they maintained their home in suburban Bellaire.

This step is a vital one in developing the Texas Society of Architects as one of the outstanding professional groups in Texas and the U. S. The rapid growth of TSA, both in membership and in the scope of its activities in the public interest, has been extremely rapid since 1949, and particularly during the past two years. Now, with a permanent headquarters centrally located to serve the 12 TSA chapters, statewide expansion can continue on an even more solid basis.

Operating from the new headquarters, Mr. Flowers and the officials and staff of TSA plan to increase the scope of statewide programs by maintaining much closer contact with the Chapters. From Austin, it will be possible to reach any part of the state in a relatively short time, and to expand present relationships with state, county, and local officials; with other professional groups; and with the many segments of the public TSA works with.

From the new Austin headquarters, TSA will be able to increase its educational and public relations activities, which center upon making the functions of architecture better known, and of increasing service to, the general public. The state capital is also a logical center from which TSA may work with various state officials, bureaus, departments, and agencies.

Perhaps more than anything, the new state headquarters offers a permanent operating base for TSA programs and activities which had increasingly needed a stable base. It was with this headquarters in mind that Mr. Flowers was named to the newly-created post of executive director last January.

It is fitting that TSA returns to Austin for this latest phase in its developing history as a well-known professional group, for it was at Austin in June, 1939, that the Society was formed by 85 charter members who have seen TSA increase its membership ten-fold in the intervening 15 years.

WHAT IS A CHURCH BUILDING?

By J. W. Caldwell, Architectural Consultant
Department of Direct Missions, Baptist Executive Board
Dallas, Texas

Last year the Southern Baptist Convention spent one hundred and twenty-nine millions of dollars for church build-



J. W. Caldwell

ings. Certainly Texas, as we lead the Southland in practically every other phase, also leads in this matter of church building. Millions of dollars, perhaps twenty million, this year will be spent on church buildings in Texas alone by the Baptists. More than 19 million was spent in 1953 just by those churches cooperating with the Baptist General Convention of Texas.

May we ask ourselves: "Are these buildings the type of buildings that we need?" Let us think this matter through. What is a building? What should it be, to be the type of building that will mean we are getting all we can for our money? What type should it be to do all that it could do for our Lord?

A building as we look upon it, should make us want to serve and to worship our Lord, but not the building. We worship a living God—Our buildings are not objects of worship. Neither is a building just an object of beauty for us to point to with pride. This does not fill the proper function of a church building—though it should be an object of beauty and one that we could be proud of. It needs to be far more than this.

Memorials To Christ

Nor is a building a memorial or a monument—though it may be built by someone to commemorate the love they had for some individual. We build buildings as a memorial to our Lord Jesus Christ, to serve Him and to point to Him alone.

I think our Baptist people as a whole are not planning buildings for the building's sake, but we are planning buildings that can be of service, buildings that can do a certain job, buildings for a definite purpose. We are not thinking so much about the building itself as we are thinking about the task the Lord has given our churches to do.

Like a tool, a building can be a good one or a bad one. It can be suited to the task, help marvelously in doing the work at hand. It can also be so poorly planned that no matter what it looks like it can hinder the work we want done. A building to be conducive to acts of worship should be a building in which people can see the speaker, hear every word without straining, and can participate in the worship service without distraction and in comfort. **Buildings should be designed to help people worship and to find the Lord.**

Everyone Included In Planning

It is our desire and our aim and our task to give to each child, to its mother, to its father, to its older brothers and sisters, to its neighbors, yes to everyone within our reach the Gospel of Jesus Christ. A building can be planned to do this job, or it can be planned in such a way that this job is difficult to do. In our planning we want to include everyone.

No Empty Buildings

If we are going to teach effectively we need to learn anew each day that people are taught best when they are taught in small groups. We should make our groups and our classes small enough so that people can have individual attention. To do this a building needs to be planned with enough classrooms, enough departments, enough space to put a large group of workers to work in teaching the Gospel of Christ.

Buildings are not only tools that aid us in worship and in Bible study, but buildings can be tools to aid us in developing a well-rounded Christian life. Our buildings can be tools to aid us in developing people as many hours of the week as possible.

Build For Additional Multitudes

After we have the Bible, the Holy Spirit, and our hearts touched with longing and compassion for the lost, we need some material things to aid us. We need enough space in our building to make it possible for us to enlarge our program. When we build let's not plan just for the people we now have. Let's build for that unreached multitude out there, just as many of them as we can! and then go out to bring them in to hear the Word of God. We must enlarge our organization so that we can go out and reach these additional multitudes.

The thing that is important in this world is the eternal soul of the individual. As we plan our buildings let us remember the most important thing: those people whom we wish to reach and for whom Christ died. Certainly this concept will lead us to plan larger and give accordingly. It will lead us to plan better than we have planned before. It will lead us to be dissatisfied with what we have done, for what we have done has not won as it should. It will lead us to be interested in doing something besides maintaining just the status quo.

This new concept will do another thing for us. It will lead us to determine what our program is before we draw any plans for a building. It will not lead us to build a building and then try to fit our people into the building as some have done.

You may ask: What will this do to my church? What will this do to my congregation? It will lead us to remember the youngest as well as the oldest, and everyone in between. It will do another thing—it will guarantee that "My house shall be filled." I know of church buildings in our land that are beautiful but almost empty. However, we have no empty buildings where we find the three essentials for building a great church: First, the preaching of the plain Gospel by a man whose heart is on fire. Second, a real program of visitation, enlistment, and teaching; and third, a building built to carry out this program. The people are here if we plan for them, if we plan earnestly, devotedly, prayerfully for them and build for them.

TSA State Headquarters Now Open At Austin In Perry-Brooks Building

TSA has opened a state headquarters office in the Perry-Brooks Building, Austin, under the direction of John G. Flowers, Jr. Mr. Flowers, executive director of TSA, has been maintaining temporary offices at 1200 Bissonnet in Houston.

Please make it a point to drop by the new office on your next trip to Austin. All mail formerly addressed to Mr. Flowers at 1200 Bissonnet in Houston should now be sent direct to him at the Perry-Brooks Building, Austin.

UH Symposium Slated Next February 7-11

Internationally-known architects are included in the group of practitioners who will be presented in a five-day symposium next February 7-11 at the University of Houston.

Sponsored by the University of Houston Architectural Society, student chapter of TSA-AIA, the winter program will be built around a series of afternoon seminars, evening lectures, and informal receptions. Present plans are to hold the symposium sessions in the lounge of Oberholtzer Hall, at the University of Houston, where the audience may surround the participants in arena theatre style during the discussions.

List of Participants

Participants will be chosen, according to Howard Barnstone, TSA-AIA, of Houston, from among the following arch-

itects: Pietro Belluschi, Marcel Breuer, Corbusier, Bruce Goff, Walter Gropius, Finn Juhl, Ludwig Mies van der Rohe, Lewis Mumford, George Nelson, Enrico Peressutti, Alfred Roth, Paul Rudolph, and Hugh Stubbins, Jr.

It is planned to have Douglas Haskell, editor and chairman of ARCHITECTURAL FORUM, as moderator, with Philip Johnson of New Canaan, Conn. as alternate moderator during the symposium.

Advance season tickets to the symposium are now being sold by the University of Houston Architectural Society, at \$10 per person.

Inquiries concerning tickets should be addressed to the University of Houston Architectural Society, University of Houston, Houston 4, Texas.

Poured gypsum applied in conventional manner.

Standard 32" x 48" rigid Fiberglass Form Board.

Fiberglas* Acoustical Form Board

Gives you two big extras at one low price

FOR POURED IN PLACE GYPSUM DECKS

1. Highly efficient insulation
2. Fire-safe acoustical ceiling

OWENS-CORNING

FIBERGLAS

*T. M. Reg. Owens-Corning Fiberglas Corp.

Write or call for sample and data.

HOUSTON BRANCH OFFICE—1114 Texas Ave. Bldg. Room 1310. Telephone: Central 9317

DALLAS BRANCH OFFICE—101 United Bankers Life Bldg. Telephone: Riverside 3983



Residence of Mr. and Mrs. M. G. Rosenthal

The design of the residence of Mr. and Mrs. M. G. Rosenthal, in Houston, won an Award of Merit for the Houston architectural firm of Bolton & Barnstone, TSA-AIA, in "Texas Architecture—1953", a statewide competition sponsored by TSA and the Dallas Chapter in cooperation with the Dallas Museum of Fine Arts.

CONSTRUCTION BOOM CONTINUES

The surprising 1954 construction boom continues across the nation, and has apparently played a major part in sparking business recovery and allaying fears of a widespread recession.

It is now estimated that new construction will probably reach \$26.4 billions in 1954, a figure some three billions greater than 1952. Of this total, there will probably be about 1.1 million non-farm houses built, and perhaps even closer to the all-time peak of 1.4 million in 1950 home starts.

Commercial building continues at a very high rate because of the continued high level of investment in new facilities. Office buildings are being built throughout Texas, particularly in the large cities

of Houston and Dallas, at a rate considerably above the national average in this category. Schools, churches, hospitals, and other public buildings are also going up rapidly, as the nation tries to catch up with a population that is increasing as much as 50,000 per week across the nation, and Texas cities set new records for building permits.

The reason for the boom, economists believe, is in (1) constantly expanding population (2) a rising gross national product which may top 358 billions this year, about 10 billion over 1952 and (3) personal income, now estimated to be headed for 284 billion, or 13 billion more than two years ago.



The design for the First Unitarian Church in Houston won an award of Merit for Houston architect Thomas Greacen, II, TSA-AIA, in "Texas Architecture—1953", a statewide competition sponsored by TSA and the Dallas Chapter in cooperation with the Dallas Museum of Fine Arts.

IT'S HERE TODAY AND HERE TOMORROW

THAT'S WHY

**GOOD PAVING
COSTS LESS**

IT LASTS LONGER

ASPHALT • CONCRETE



**Industrial
Residential
Street**



*Estimates
Without Charge*

TEXAS BITULITHIC CO.

DALLAS

• FORT WORTH •

NEW ORLEANS

New Products

Dura-Swift, a new type of fast-drying floor finish made from synthetic raw materials, has been developed by the McCloskey Varnish Company, 7600 State Road, Philadelphia, Pa. The finish is resistant to caustic solutions, scalding water, alcohols, and ammonia. It can be used on wood floors, wax-free linoleum, unfinished furniture, interior trim, doors, and table tops.

Veni-Flex, a new woven wood slat folding door, is being manufactured by the Consolidated Venetian Blind Company, 2401 Nicholson Street, Houston 8. Veni-Flex may be used for between-room doors, closet closures, office or room dividers, folding partitions, or similar uses.

The Synkoloid Company, 1745 Record Crossing Road, Dallas 19, is now making Prime 'N Fill, a new product which primes, fills, and surfaces building blocks in one operation. Applied to a dry wall, it is ready for painting eight hours after application.

The Iron Fireman Manufacturing Company, Cleveland 11, Ohio, is now distributing nationally its new SelecTemp

heating system, which provides a thermostat in each room and continuous circulation of filtered warm air. The three different units provided are 6,000, 12,000 and 18,000 BTU per hour capacity.

Sparkling White Marble and 20 Other Colors for Roofing & Terrazzo

**4 Shades of Green
Now So Popular**

**We have an inventory
of 100,000 bags; can fill
orders for one or more
colors immediately.**

DEZENDORF MARBLE COMPANY

2800 E. 17th ST. AUSTIN, TEXAS

PHONE 2-3440

Layne Texas Company

"GROUND WATER SPECIALISTS"

HOUSTON • MIDLAND • EL PASO • CORPUS CHRISTI • DALLAS

Vina-Lux® floors give a warm welcome



To give guests in the home a favorable first impression, nothing is more important in the entrance foyer than the floor which keynotes the entire decorative scheme of the home. Vina-Lux, with its broad range of beautiful colors, can be used effectively to dramatize this important room.

Vina-Lux colors blend perfectly with today's new fabrics and furnishings—and, besides being beautiful, are prac-

tical. Here's a floor that is harder to get dirty and easier to get clean. Its built-in surface sheen simply does not permit dirt or grime to wear in. Food greases and oils will not soften it and it keeps its glossy surface sheen without the need of waxing.

Let them walk into a warm welcome, by walking in on Vina-Lux—America's leading vinyl-asbestos tile. It's the *modern* floor that adds real distinction to any home

AZROCK PRODUCTS DIVISION • UVALDE ROCK ASPHALT CO.

FROST BANK BUILDING • SAN ANTONIO, TEXAS • MAKERS OF VINA-LUX • AZROCK • DUBACO • AZPHLEX



● *When you desire*

SERVICE

in the form of

**FURNITURE
INFORMATION**

or collaboration in

**INTERIOR
LAYOUTS**

along with

**GRAPHIC
PRESENTATION**

you- or your

CLIENT

are welcome to our

SHOWROOM *and*

**DESIGN
DEPARTMENT**

any time, with

NO OBLIGATION

Plan to visit ●

FINGER CONTRACT

3131 Calhoun, Houston-AT 3441

With Our Advertisers

Barry F. Fehlman, Jr. heads the new field engineering office for the Clay Products Association of the Southwest, in Fort Worth. The office is at 3400 Kingsbury Avenue, and will serve the Fort Worth and West Texas areas.

The Daron Corporation, 1622 Austin, Houston, has been appointed state distributors for Gelvatex, a vinyl emulsion paint.

Claude M. Cockrell has been appointed general manager of the Tyler Specialty Company, Tyler, a subsidiary of the Tyler Pipe & Foundry Company.

M. H. Waterman has been named to the new position of sales manager for W. L. Macatee & Sons, Houston building materials firm.

Ralph B. Cushman, Jr., of Houston, formerly general manager for Concho Concrete Corporation, San Angelo, is now Gulf Coast area representative for the Featherlite Corporation.

National Firms Lauded For Products Literature At Boston AIA Convention

Pittsburgh Plate Glass Company, Armstrong Cork Company, and the National Concrete Masonry Association were awarded certificates of exceptional merit in the 1954 building products literature competition sponsored jointly by the American Institute of Architects and the Producers' Council. The awards were presented at the Boston AIA convention.

Certificates of merit in the same competition went to Owens-Corning Fiberglass and to the Truscon Steel Division of Republic Steel Corporation, makers of Truscon metal windows and doors.

PROFESSIONAL DIRECTORY

TEXAS MODEL CO.

Professional Builders of Scale Models
Promotional Models
Engineering Studies
Exterior and Interior Design Studies
1003 Hyde Park Houston, Texas
LI-1878

FOUNDATION INVESTIGATIONS

- undisturbed sample borings
- laboratory soil tests

GREER & McCLELLAND

Consulting Foundation Engineers
2649 N. Main Houston, Texas
98 Greenwood Montclair, N. J.

SOUTHERN INSPECTION SERVICE ENGINEERS INSPECTION & TESTS

P. O. Box
8633



3206 Houston
Ave.

P. D. Bernard
Mgr.

VA-6621

Houston, Texas

Planning Well Ahead For November 3-5 Fort Worth Convention

Planning for the 15th annual TSA convention at the Texas Hotel in Fort Worth is well along following a board of directors meeting in Fort Worth at which arrangements for the convention occupied a major part of the agenda. The convention opens November 3 and runs through November 5.

Heavy advance demand for exhibition space for the convention, expected to attract a record registration, indicates the statewide interest in the event. Exhibitors are urged to contact John G. Flowers, Jr., TSA executive director, at 801 Perry-Brooks Building, Austin, for reservations. Well-located space is still available but only about 25% of the total area remained unreserved on August 1.

Arrangements are in charge of John Floore, TSA-AIA, and Preston Geren, Jr., TSA-AIA, both of Fort Worth.

WEBSTER & JANITROL

WEBSTER ENGINEERING CO.
TULSA, OKLAHOMA

SURFACE COMBUSTION CORP.
TOLEDO, OHIO

Gas and Oil
Burners and
Combustion
Controls

Heating
and Air
Conditioning
Equipment

Represented in the Northern Half of Texas by

CATLETT ENGINEERS, INC.

MANUFACTURER'S AGENT

9020 Garland Road, Dallas, Texas

FA-2683

WHITE is so much more effective!

Trinity white—the whitest white cement—is a true portland. The gleaming sparkling whiteness as mass or contrast increases the stature of good design. Use it for architectural concrete units; stucco; terrazzo; and wherever high light-reflection is indicated. Trinity white meets all Federal and ASTM specifications.

46 This grayness of gray portland cement is absent in Trinity White. That's why Trinity White is best where concrete is to be "white." There is no mudiness in your color. You get cleaner, truer colors.



Trinity White
THE WHITEST WHITE CEMENT

A Product of GENERAL PORTLAND CEMENT CO. • Chicago • Dallas • Chattanooga • Tampa • Los Angeles



THE TEXAS SOCIETY OF ARCHITECTS
THE TEXAS REGIONAL DISTRICT ORGANIZATION OF
THE AMERICAN INSTITUTE OF ARCHITECTS

1-2-66 10:00 AM F. J.

0-0000, 0000

Sec. 34.66, P. L. & R.

U. S. POSTAGE

PAID

Houston, Texas

Permit No. 6061

TEXAS ARCHITECT • 1200 BISSONNET • HOUSTON, TEXAS