

# TEXAS ARCHITECT

OFFICIAL PUBLICATION OF THE TEXAS SOCIETY OF ARCHITECTS



HONORING TEXAS PUBLIC SCHOOLS CENTENNIAL - AIA

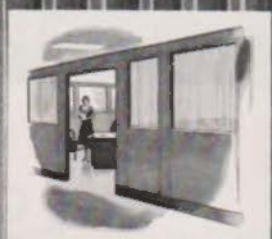
TEXAS PRODUCTS ISSUE

**APRIL**  
**1954**

**MADE BY WRIGHT . . .** America's pioneer in rubber flooring, and makers of world-famous Wright Rubber Tile and Vinyl Tile . . .

**STURDALITE . . .** the quality fiberglass-plastic panel—is the product of 35 years' experience with molded plastics.

**YOU CAN DEPEND** on Sturdalite's uniform high quality and ready availability. Samples and specifications are yours for the asking.



**PUT SHATTERPROOF**

**STURDALITE**

**IN YOUR NEXT  
BUILDING JOB!**



0991

**WRIGHT MANUFACTURING CO.** 5208 Post Oak Road • Houston

# INSIDE THE TEXAS ARCHITECT

Proclamation of Texas Architects' Week .....	3
Architects Salute Centennial of Public Schools .....	5
Texas Building Products .....	7
Statewide Observance of Texas Architects' Week .....	8

## THE TEXAS ARCHITECT

VOLUME 4                      APRIL, 1954                      NUMBER 12

Official Publication of

THE TEXAS SOCIETY OF ARCHITECTS

The Texas Regional District Organization of  
The American Institute of Architects

David C. Baer, AIA-TSA Houston ..... Editor

John G. Flowers, Jr., ..... Managing Editor  
1200 Bissonnet, Houston, Texas

George Kirksey & Associates Editorial Counselors  
2244 W. Holcombe, Houston

### PUBLICATION BOARD

David C. Baer, Chairman, TSA-AIA ..... Houston

Edwin W. Carroll, TSA-AIA ..... El Paso

Lee R. Buttrill, TSA-AIA ..... Temple

Albert S. Golemon, TSA-AIA ..... Houston

James C. Morehead, Jr., TSA-AIA ..... Houston

Reginald Roberts, TSA-AIA ..... San Antonio

Edward L. Wilson, TSA-AIA ..... Fort Worth

### TEXAS SOCIETY OF ARCHITECTS OFFICERS

Edwin W. Carroll ..... President  
1001 E. Yandell, El Paso

Grayson Gill ..... Vice-President  
1913 San Jacinto, Dallas

R. Max Brooks ..... Second Vice-President  
205 E. 8th Street, Austin

Louis F. Southerland ..... Secretary-Treasurer  
602 West Avenue, Austin

John G. Flowers, Jr. .... Executive Director  
1200 Bissonnet, Houston

### DIRECTORS

Macon O. Carder ..... Amarillo  
Panhandle Chapter, A.I.A.

Arthur Fehr ..... Austin  
Central Texas Chapter, A.I.A.

A. B. Swank, Jr. .... Dallas  
Dallas Chapter, A.I.A.

Robert P. Woltz, Jr. .... Fort Worth  
Fort Worth Chapter, A.I.A.

Reginald Roberts ..... San Antonio  
San Antonio Chapter, A.I.A.

C. P. Donnelly ..... Corpus Christi  
Coastal Bend Chapter, A.I.A.

Eugene Werlin ..... Houston  
Houston Chapter, A.I.A.

Warren C. Suter ..... Mission  
Lower Rio Grande Chapter, A.I.A.

William G. Wuehrmann ..... El Paso  
El Paso Chapter, A.I.A.

Ernest Langford ..... Bryan  
Brazos Chapter, A.I.A.

David S. Castle ..... Abilene  
West Texas Chapter, A.I.A.

R. C. Heartfield ..... Beaumont  
Southeast Texas Chapter, A.I.A.

Edward L. Wilson ..... Fort Worth  
A.I.A. Director

Albert S. Golemon ..... Houston  
Immediate Past President, TSA

Published monthly by the Texas Society of Architects in Houston and mailed without charge. Copyrighted 1951 by the T.S.A., and title registration applied for with the U. S. Patent Office.

Editorial contributions, correspondence, and advertising invited by the Editor. Due to the nature of the publication editorial contributions cannot be purchased. Publisher gives permission for reproduction of all or part of editorial material herein, and requests publication credit be given

THE TEXAS ARCHITECT, and author of material when indicated. Publications which normally pay for editorial material are requested to give consideration to the author of reproduced by-lined feature material.

Appearance of names and pictures of products and services in either editorial copy or advertising does not constitute an endorsement of same by either the Texas Society of Architects or the American Institute of Architects.

## CALENDAR OF EVENTS

**April 7-13**—Third annual Texas Architects' Week, throughout the state.

**June 15-19**—86th annual AIA Convention at Boston.

**November 3-5**—15th annual convention, TSA at Fort Worth.



## SHADOW BOX PANEL WINDOW

- Made of selected western Ponderosa Pine, preservative treated.
- Individual panels available in five widths and four heights and with either stationary glass or operating sash, opening in and out.
- Panels can be combined and arranged to provide a window area that gives maximum beauty, light and ventilation.



**IDEAL MILLWORK IS SOLD AT BUILDING MATERIAL STORES.**  
Made in the South's Largest Standard Millwork Factory

# WEBSTER & JANITROL

WEBSTER ENGINEERING CO.  
TULSA, OKLAHOMA

SURFACE COMBUSTION CORP.  
TOLEDO, OHIO

Gas and Oil  
Burners and  
Combustion  
Controls

Heating  
and Air  
Conditioning  
Equipment

Represented in the Northern Half of Texas by

## CATLETT ENGINEERS, INC.

MANUFACTURER'S AGENT

9020 Garland Road, Dallas, Texas

FA-2683



## 4 sales aces

Here at Associated, in addition to high quality Douglas fir plywood, we manufacture specialty panels that present new sales and profit opportunities to you. They are:

**SEA SWIRL** decorative fir plywood. Interior and exterior.

**KNOTTY SEA SWIRL** decorative fir plywood. A companion product to select *Sea Swirl*.

**BIRCH** faced plywood with solid cores. In standard size panels,  $\frac{1}{4}$ " and  $\frac{3}{4}$ " thickness.

**PHILIPPINE MAHOGANY** faced plywood with solid cores. A companion product to Birch faced panels.

APMI quality plywood products are available at company warehouses, and through selected independent jobbers. Your inquiries are welcomed.

All car load sales and shipments of Associated Plywood Mills, Inc., plywood for this territory are handled by our Dallas, Texas office at 4814 Bengal Street—Telephone Logan 6647—Deryl Gosup, Manager.



**ASSOCIATED PLYWOOD MILLS, Inc.**

General Offices: Eugene, Oregon / Plywood plants at Eugene and Willamina  
Lumber mill at Roseburg

# Official Memorandum

BY

ALLAN SHIVERS  
Governor of Texas

AUSTIN, TEXAS

## GREETINGS:

Much of our creative and material progress is due to the profession of architecture and its practitioners, who plan and build for the present and for the future.

At every stage in our lives, architecture has a profound influence in shaping our environment. Hospitals, homes, schools, churches, commercial and public buildings, theaters, museums, stadiums -- every type of structure which comes from the architect's imagination and skill shapes our way of existence.


It is appropriate for us to pause and look at the importance of architecture and to pay tribute to the architects of Texas. These men have combined their creative power and professional ability to bring us comfort, beauty, and utility.

NOW THEREFORE I, as Governor of Texas, do hereby designate the week of April 7 - 13, 1954, as

### TEXAS ARCHITECTS' WEEK

and urge that every citizen join in recognizing and honoring the profession of architecture.

In official recognition whereof, I hereby affix my signature this 17th day of April 19 54

  
Allan Shivers  
Governor of Texas

## Architects Salute Public Schools Centennial

TSA members join with millions of other Texans this year in saluting the centennial of our public schools, and all 12 TSA chapters are emphasizing developments in school architecture during Texas Architects' Week, April 7-13.

In every part of our state and nation, the scholastic population has grown by leaps and bounds since World War II, with the greatest increases still to come. Virtually every school district in the U. S. faces the problems brought about by the dilemma of sharply increased enrollments and limited funds available for the expansion of facilities.

Here the profession of architecture can perform one of its most important public services, by cooperating with school administrators, teachers, officials, parents and other citizens to provide structures that will help solve a critical problem.

If you trace the development of our public school system since 1854, and particularly in the last few decades, one thing is immediately apparent: Architecture has always been a key factor in providing the facilities needed for changing curricula and newer teaching techniques. Indeed, architecture has often pointed the way, while looking ahead to the schools of the future in a constant effort to avoid obsolescence and the waste of the taxpayer's money.

In a number of cities over the state, special programs during Texas Architects' Week will be devoted to a joint discussion by architects and others closely concerned of the many pressing problems before us as Texas completes its first 100 years of public education.

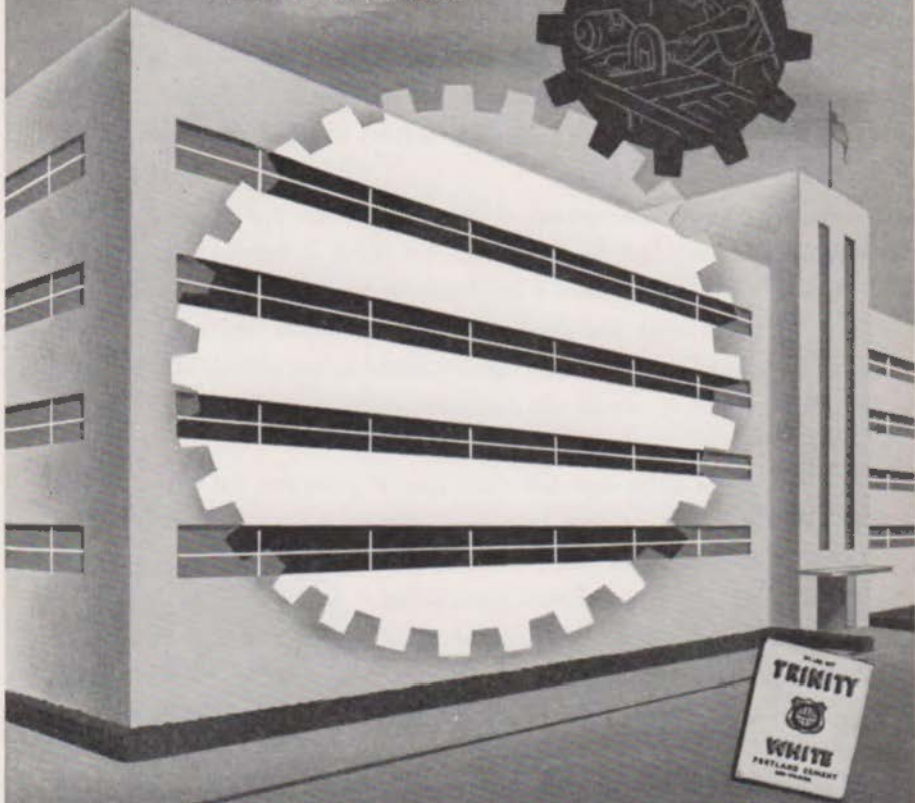
At public meetings and on special radio and television programs, TSA members are to explore questions of how to provide best for the students of today and tomorrow. Out of such discussions may well come ideas of real worth to students, school representatives, and citizen taxpayers alike.

The date, time and place of these meetings and programs, during the period April 7-13, will be mentioned in advance over the state through newspapers, radio, and television. We urge all Texans to attend them in person, as a radio listener or television viewer. You can help salute the centennial of our public schools in a most practical manner by doing so.

# Trinity White

is a true portland cement

Use it for a brilliant sparkling white,  
or with pigments added it gives the loveliest of colors!  
Specify it for architectural concrete units . . .  
terrazzo . . . stucco . . . and light reflecting  
uses. It's a true portland . . . and it meets all  
Federal and ASTM specifications.



as white  as snow

It's the whitest white cement

A Product of GENERAL PORTLAND CEMENT CO. • Chicago • Dallas • Chattanooga • Tampa • Los Angeles



#### URBAN BUILDING UP APPROXIMATELY 8%:

The Department of Labor has announced that the 1953 value of urban building in the South was up 8% over 1952. Volume in Texas increased about 1%. New dwelling units were off about 15% in the same period throughout the South.

#### NEW REGISTRATION CERTIFICATE AVAILABLE:

TSA members are reminded that the new registration certificates shown in a full-page illustration in the last issue of the TA are now available from Harold Jessen, State Board of Architectural Examiners, Austin. The fee for issuing the new certificates is \$2.00.

#### CHURCHMAN SPEAKS OUT FOR ARCHITECTURE:

A very interesting case has come to light in Toronto, where Dr. Kenneth Glazier, moderator of the Toronto East Presbytery, has declared that future Presbyterian churches in the area must be designed by an architect or they will not get financial support from the Presbyterian Church of Canada.

Dr. Glazier left the chair at a recent presbytery meeting to defend the policy of the Church's Committee on Church Architecture, of which he is a member, against remarks of a minority of those present who felt architectural fees were an unnecessary expense and that congregations could not be limited in their spending by such a ruling.

"I can show you buildings in Toronto that are a disgrace to the Presbyterian Church," said Dr. Glazier. "Congregations get the idea they can put up any kind

(turn page)

of structure, get a loan of \$25,000 or \$30,000 from the Presbyterian Church, and squander it. And I say 'squander' deliberately.

"I could take you to a church in this city that seats 200 people and cost \$120,000 to build. It was built without the services of an architect. The Presbyterian Church contributed \$40,000. There is a church in this presbytery, also seating 200 and built from an architect's plans, which cost \$45,000," he said. It is the most scandalous thing in the Presbyterian Church that a congregation was sent a cheque for \$40,000 and the men in the church's head office didn't know what was being built."

#### TSA MEMBERS AT NEW MEXICO MEETING:

Ed Carroll, President of TSA, and Bill Caudill, Bryan have been invited to serve as members of the Honor Award Jury at the Third Annual Conferences of the Western Mountain District of the AIA., in Santa Fe, New Mexico, April 22-24. As jury members they will judge the outstanding work of the region this year.

#### RECENT MEETINGS:

All recent Chapter meetings, as reported by Chapter secretaries, have been concerned with perfecting details of TAW programs over the state. We need prompt reports of ALL meetings, however, addressed to John Flowers, at 1200 Bissonnet, Houston 5.

#### TAW ARTICLE FOR PUBLIC RELATIONS JOURNAL:

The president of the Public Relations Society of America, Milton Fairman of the Borden Company, has requested Pat. Nicholson, TSA public relations counsel, to

TAW ARTICLE FOR PUBLIC RELATIONS JOURNAL- Cont'd from  
Page 2.

prepare a special article on TAW and TSA'S overall statewide public relations program for a forthcoming issue of the Public Relations Journal, nationally-circulated publication of the PRSA.

#### BOOK ON MEDICAL CLINICS:

Paul Hayden Kirk of 615 Lakeview Blvd. Seattle 2, Wash., and Eugene Sternberg, 2364 East Third Avenue, Denver 9, Colorado, are preparing a book for Reinhold Publishing Company on medical and dental clinics. Any TSA members who have done work of this type which they believe might be of interest to these authors are requested to send immediately blueprint of plans and elevations, with snapshots if available, either to Mr. Kirk or Mr. Sternberg.

#### NEW ORLEANS POLL:

The New Orleans Chapter is polling its members in an annual ballot to select 10 outstanding buildings designed and built there since 1947.

#### HOUSING FOR THE AGED:

Another specialized field is currently being explored by the Housing Research Council, a group of architects, engineers and others interested in housing conditions in general. This group is collecting information on planning problems and requirements for buildings including sanitarium institutions, day homes, recreation centers, etc. designed especially for older persons. Any TSA members who would like to join this group or participate in its research are invited to contact Whitney Smith, AIA, % Southern California Chapter, Los Angeles, California.

## PRESIDENT'S LETTER

TAW should be in full swing when you receive this issue of the Newsletter. A summary article in the TEXAS ARCHITECT gives many details of what is the best celebration to date of the statewide event, and every Chapter is due the thanks of the Society for working diligently on TAW.

The more extensive programs are at Houston and at San Antonio, where committees working under Baldwin Young and Cerf Ross, respectively, will have observances of considerable scope. It is heartening to note, however, that in every part of the state TSA members have pitched in together on what they are now convinced is a most worthwhile affair.

By this time, all Chapters will have received the attractive bus cards (11"x 14"), tent cards (4½"x 6", two sides), and stamps carrying the profile of Thomas Jefferson and the legend: "Texas Architects' Week, April 7-13." "Honoring Centennial Of Texas Public Schools." All of this material has been produced most attractively in brown and black, from an original design by Robert Maurice of the Houston Chapter.

In the next issue there will be a complete report on TAW so please mail information, clippings, etc. to Jno. F. Flowers, 1200 Bissonnet, Houston, by April 15. TSA now has firmly established an annual event which is the basis for much of our year-round public relations program, and the sound worth of Texas Architects' Week is more apparent each year.

Edwin W. Carroll,  
President, TSA

## BOARD MEETING IN AUSTIN

The spring meeting of the Board of Directors of TSA will be held at the Commodore Perry Hotel in Austin beginning at 10 a. m. Saturday, April 3. A full agenda will include discussion of such matters as the Senator Wayne Wagonseller affair (see below), TAW, plans for the remainder of the year, and important interim committee reports.

### SENATOR WAGONSELLER REPORT

You will recall in the last issue of the TANL an account of the charges by Senator Wayne Wagonseller of Bowie concerning alleged mishandling of contracts by the State Hospital Board and Walter Moore, Jr., TSA-AIA of Austin, the Board architect. This affair now seems thoroughly in hand following some yeoman work by TSA officials and other groups.

Senator Claude Gilmer, A. M. Aikin, Jr., of Paris had requested full information from a TSA committee which was to meet and report back within 48 hours at the opening of the current special session of the Legislature. In this emergency, Albert S. Golemon, of Houston, immediate past president and incoming AIA regional director; Arthur Fehr of Austin, TSA director and Grayson Gill of Dallas, TSA vice-president, met within a matter of hours with Carl Hardin, Jr., TSA legal counsel; and Walter Moore, who were asked to appear as witnesses. With Mr. Gill as chairman, the three-man committee reviewed a total of 225 contracts on the last six state hospital jobs. Working the entire week-end, they checked the handling of each contract against accepted ethical standards and found no irregularities whatsoever. At the conclusion of their sessions, this committee sent immediately to Senator Aikin a report noting that no irregularities were found, and commending

(cont'd Page 8)

THE OBLIGATIONS OF GOOD PRACTICE and THE MANDATORY  
RULES OF THE INSTITUTE - AIA DOCUMENT 330:

The work of revising THE OBLIGATIONS OF GOOD PRACTICE AND THE MANDATORY RULES OF THE INSTITUTE, AIA DOCUMENT 330 was completed by the Committee on Architectural Practice recently. The Board of Directors of AIA approved the Committee's draft for printing and distribution to the Institute membership for its information and study.

Ethics in the architectural profession has been brought to its present high level with the consent and cooperation of the membership. Good ethics does not come through the policing of the many by the few.

There is no radical departure in the new draft from the previous basic concept of ethics in architectural practice. Changes in wording or rearrangement of paragraphs has been made to clarify and particularly to make the Mandatory Rules of the Institute easy to interpret and to enforce.

A new approach is taken concerning the architect's position on estimates of construction costs. This revision in concept seemed necessary to preserve the dignity of the profession because of the increasing need for cost consciousness on the part of the architect.

One clarification of the Rules is in the second paragraph of old Rule 2, which is also new Rule 2.

"An Architect shall not render  
architectural services without  
compensation."

Non-competitively, he may prepare preliminary data  
(cont'd Page 7)

LETOURNEAU SEMISPHERE:

R. G. LeTourneau, Inc., the Longview firm specializing in earth-moving equipment, has built a "Semisphere", constructed without interior structural supports, which will seat 12,000. The building is 85 feet high and 300 feet in diameter. All of the assembly work to make it out of aluminum and steel was done at ground level. It sells at less than \$4 per square foot of space completely assembled.

IN GARDEN AND HOMES SHOW:

The San Diego, Cal, Chapter was donated a \$600 booth to participate in the local Home and Garden Show, and found this an excellent opportunity to reach large numbers of the public.

---

THE OBLIGATIONS OF GOOD PRACTICE and THE MANDATORY RULES OF THE INSTITUTE-AIA DOCUMENT 330-  
(cont'd from Page 6)

for a prospective client provided he has prior assurance from the client that if the contemplated project proceeds he will be employed as an architect.

This revision is not considered a change in the basic philosophy of professional ethics involved.

The attention of each of the Chapters is directed to the draft of this document which will be received by the membership. Murrel Bennett, Chairman of the TSA Committee on Architectural Practice, will be in touch with the President and Chairman of each Chapter AP Committee soon for action desired in connection with the new draft.

the State Hospital Board for its handling of the 225 contracts examined.

Senator Aikin now has this report, but up to press time there had been no indication of any resumption of Senator Wagonseller's totally unsubstantiated charges. If these are resumed, it is felt that the charges can be fully repudiated as they were in the original hearing at which the Bowie senator was asked by Senator Aikin to document his allegations of mishandling made against the State Hospital Board and Mr. Moore.

The thanks of the entire Society are due to Mr. Gill and the other members of the committee who worked around the clock in this matter, as well as to Ed Wilson of Fort Worth, AIA Director, and those who came to the defense of our profession when the matter first came up. It is also fitting to note how the engineers and contractors stood by loyally in what amounted to an attack on all concerned with any phase of the building industry.

#### NEW COMMITTEE BULLETIN:

Harold Calhoun of Houston, chairman of the statewide public relations committee has produced an attractive two-color multilith report on final arrangements for TAW, and will follow on April 3 with a second such bulletin on public relations plans for the entire year. He plans to issue the bulletins periodically to stimulate public relations planning, thought and action.

#### ADDRESS CHANGE:

Wilson, Patterson and Associates  
601 Bailey Avenue, P. O. Box 9035, Ft. Worth, Texas



# Building Products Help Balance Texas Economy

## Tremendous Variety of Products From Three Principal Sources Adds Mightily To Lone Star Income

The Texas economy, once built upon the growing and processing of products of our farms and ranches, now rests on not one but three substantial bases: agriculture and ranching, the extraction of mineral wealth in which the state abounds, and manufacturing.

### Two Basic Reasons

In the tremendous upsurge that has changed the state so significantly and brought its population to 8,000,000, the manufacture of building products has become of increasing importance. There are two basic reasons for this: (1) the long-continued prosperity and steep rate of population growth, both of which have stimulated and maintained high levels of building activity and (2) readily available deposits of raw materials, well-trained labor, and plentiful fuel, plant sites and other needed facilities including capital.

The manufacturer of building products has found in Texas all the necessary fundamentals of raw materials, manpower, and physical facilities, plus a ready-made and expanding market booming under the impetus of a tremendous construction program.

The building products industry has drawn heavily upon three principal sources of raw materials: deposits of stones, clays, gravel, glass sands, iron ore, and similar materials; the great variety of woods in Texas forests; and a galaxy of petroleum, mineral, and petrochemical products, many of them partly or wholly processed; plus the sea itself.

### Hundreds of Products

From these materials are made the building products for which there has been such a large and expanding market, not only in Texas itself but in every part

of the nation. Among these are light-weight concrete aggregates, brick and tile, glass, steel, building stone, aluminum, cement, gypsum, marble, terrazzo chips, special window assemblies, entrance ways, pipe of many types, a great variety of plastic building and insulating materials, wood flooring, rubber tile, plastic and vinyl flooring and coverings, and every variety of furniture from that required by churches and schools to special custom-made installations for the home, office, and factory.

Texas building products are rapidly approaching the time at which they will constitute perhaps the single most important factor in the overall total value added to state products by manufacturing.

**Sparkling White Marble  
and 20 Other Colors  
for Roofing —**

**4 Shades of Green  
Now So Popular**

**We have an inventory  
of 100,000 bags; can fill  
orders for one or more  
colors immediately.**

**DEZENDORF  
MARBLE  
COMPANY**

**2800 E. 17th ST. AUSTIN, TEXAS  
PHONE 2-3440**

# Texas Architects' Week Is April 7-13

## TSA Chapters Offer Programs Emphasizing Centennial Of Texas Public Schools

Texans in every part of the state will have the opportunity to gain a better idea of the functions and services of the architectural profession during the third annual Texas Architects' Week, April 7-13, as the 12 TSA Chapters offer a wide variety of programs emphasizing the centennial of Texas public schools.

Panel discussions with school officials, administrators, parents and other citizens; television and radio programs on architecture's role in the dilemma presented by greatly increased enrollment and limited funds for building schools; banquets saluting educational officials, displays and exhibitions contrasting school architecture of yesterday and today; joint meeting with other professional groups; honoring of outstanding craftsmen—all of these programs will be carried on at various points in the state during the widest observance to date of Texas Architects' Week.

### Summary of Typical Programs

Here is a summary of some of the events scheduled by the 12 Chapters. Please refer to your local newspapers and radio and television schedules for more complete details and times:

**SAN ANTONIO:** Dinner on April 13, Thomas Jefferson's birthday, honoring outstanding craftsman, an architect selected for past achievement, and an outstanding civic group through whose efforts the architectural profession has been advanced. Endowment of an architectural section in the library. Inauguration of a planning and research program for city development.

**HOUSTON:** Panel discussion of relationship of the architect to the current problems brought about by greatly increased numbers of students and limited funds for school system expansion. Two television programs, one on the panel discussion above, another on schools of 1904 contrasted to 1954 and on the education and professional development of the architect. Two exhibits of school architecture. Reception honoring school officials and groups. Special downtown displays and exhibits. A dinner on April 13, honoring an outstanding school architect and a craftsman.

### Television & Radio Shows

**PANHANDLE:** Special architectural exhibits in downtown areas and at Texas Tech in Lubbock. Joint meetings with professional groups and Chamber of Commerce. Television and radio shows.

**EL PASO:** Dinner honoring an outstanding craftsman selected by Chapter members. Downtown exhibits, including a photographic exhibition of modern architecture shown at the State Fair of Texas.

**WEST TEXAS:** Joint meeting with other professional groups. Special programs in San Angelo and elsewhere featuring progress in school architecture. Window displays. Radio and television programs.

### Emphasis On Schools

**DALLAS:** Special television program emphasizing school architecture. Exhibits in downtown stores.

**FORT WORTH:** Dinner honoring a craftsman. Special television program. Exhibits.



## Governor Proclaims Texas Architects' Week

TSA officials were on hand in Austin as Governor Allan Shivers proclaimed April 7-13 as the third annual Texas Architects' Week. Left to right, John G. Flowers, Jr., Houston, executive director for TSA; R. Max Brooks, TSA-AIA of Austin, second vice-president; Governor Shivers; Edwin W. Carroll, TSA-AIA of El Paso, president; Donald S. Nelson, TSA-AIA of Dallas, state chairman for Texas Architects' Week; and Louis F. Southerland, TSA-AIA of Austin, secretary-treasurer.

**RIO GRANDE VALLEY:** Special television program on school architecture. Exhibits in downtown stores. Civic club programs and joint meeting.

**COASTAL BEND:** Exhibits. Special TAW meeting with professional groups.

**BRAZOS:** Special exhibition contrasting school architecture of today and yesterday.

### 50,000 Stamps Used

**SOUTHEAST TEXAS:** Displays of school architecture. Special TAW meeting.

**CENTRAL TEXAS:** Exhibit of school architecture. Displays.

In many Texas cities, Texas Architects' Week has been proclaimed by the mayor. Bus cards, display cards, and 50,000 stamps will carry the theme of TAW, with the identifying profile of Thomas Jefferson, to every corner of the state.

### TSA Board Of Directors Will Meet In Austin Saturday, April 3

The board of directors of TSA will meet at 10 a.m. Saturday, April 3, at the Commodore Perry Hotel in Austin. Edwin W. Carroll, TSA-AIA of El Paso, president, will preside at the regular spring board meeting.

## PROFESSIONAL DIRECTORY

### Construction Service Company

Quantity Surveys—Design—Models—Renderings

4507 Ohio Garden Road, Fort Worth, Texas

### CONSULTANT ENGINEERS

Cost analysis — Appraisal — Estimates  
Architectural Renderings and Models

### FOUNDATION INVESTIGATIONS

- undisturbed sample borings
- laboratory soil tests

### GREER & McCLELLAND

Consulting Foundation Engineers

2649 N. Main  
Houston, Texas

98 Greenwood  
Montclair, N. J.

### SOUTHERN INSPECTION SERVICE ENGINEERS INSPECTION & TESTS

P. O. Box  
8633

P. D. Barnard  
Mgr.



3206 Houston  
Ave.

VA-4621

Houston, Texas

## Our Texas Distributors

### HOUSTON

Buie Building Material Co.  
7400 Washington Avenue  
P. O. Box 13215

### DALLAS

Samuel A. Ellsberry Co.  
3136 Routh Street  
P. O. Box 6248

### AMARILLO

Jenkins Brick & Supply Co.  
820 West Sixth Avenue

### EL PASO

Wedge & Liddell, Inc.  
1004 East Missouri St.

### LUBBOCK

Western Brick & Supply Co.  
2301 Ave. G, P. O. Box 414

### SAN ANTONIO

Jno. A. Williamson Co.  
1727 Broadway

## arcadia

SLIDING GLASS DOORS

## IT'S HERE TODAY AND HERE TOMORROW



THAT'S WHY

# GOOD PAVING COSTS LESS

IT LASTS LONGER

ASPHALT • CONCRETE

Industrial  
Residential  
Street



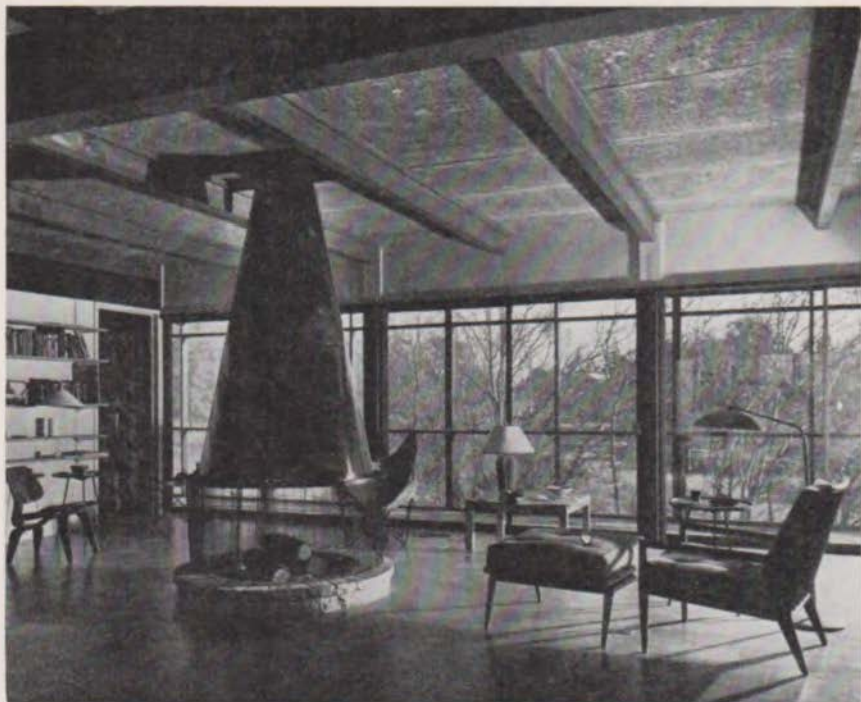
Estimates  
Without Charge

# TEXAS BITULITHIC CO.

DALLAS

• FORT WORTH

• NEW ORLEANS



## Joseph Sneed Home in Austin

An interior view of the Austin home of Mr. and Mrs. Joseph Sneed, which won an award of merit for the Austin architectural firm of Fehr & Granger, TSA-AIA, in the "Texas Architecture—1953" competition.



### *It's a Lucke Leak-Proof Bathtub Hanger*

It DOES stop Leaks  
It DOES stop Cracks  
It DOES stop Expense  
It DOES Overcome Spotty or Soiled  
ceilings

Guaranteed Leak-Proof for Life of Building  
Specify LUCKE for Permanence.

Write for Information  
**WILLIAM B. LUCKE, INC.**  
P. O. Box 177 Wilmette, Illinois

Cut Installation  
Costs with . . .

# Extra-Long TEX-VIT<sup>®</sup> Clay Pipe



To get longer lengths of Clay Pipe that require fewer joints, provide faster flow, and assure permanent protection against corrosion, always specify Tex-Vit Glass Lined Pipe. It cuts laying costs, speeds runoff, and is true to dimensions. Friendly Tex-Vit service helps keep your job on schedule with prompt delivery. No wonder more than 20 Southwest cities have installed 100,000 feet or more of Tex-Vit Pipe in the past few years!

WRITE FOR your copy of the complete Tex-Vit Clay Products Portfolio, which includes data, specifications and helpful information on clay products.



CENTRAL  
LOCATION  
—by rail or  
truck, ship-  
ments of high-  
quality Tex-Vit  
clay products  
reach you faster  
from our up-to-date,  
centrally located plant.

MINERAL WELLS, TEXAS  
PHONE 331

TEXAS VITRIFIED  
PIPE COMPANY

TP-154 30A

● *When you desire*  
**SERVICE**

*in the form of*

**FURNITURE  
INFORMATION**

*or collaboration in*

**INTERIOR  
LAYOUTS**

*along with*

**GRAPHIC  
PRESENTATION**

*you - or your*

**CLIENT**

*are welcome to our*

**SHOWROOM** *and*

**DESIGN  
DEPARTMENT**

*any time, with*

**NO OBLIGATION**

*Plan to visit* ●

**FINGER CONTRACT**

*3131 Calhoun, Houston-AT 3441*

# Vina-Lux® ... makes better school floors



Architects are designing school buildings today that are far more effective in answering the problems of education at costs that mean greater value to the school community. New and better building materials are contributing to these more efficient school plants.

Vina-Lux vinyl-asbestos tile has been designed to give the school architect a *new* type of flooring that performs better in this *new* type of school. Vina-Lux is easier to walk and work on, is made in new light-reflecting colors

that harmonize with modern school décor, *is much simpler to clean and keep clean*, and has a much longer life. Over a period of years, Vina-Lux floors cost less per square foot per year and give greater satisfaction in every respect.

Why not investigate this better answer to your school floor problems? Ask us to have a qualified representative come in and discuss with you all the facts about Vina-Lux — America's leading vinyl-asbestos tile.

AZROCK PRODUCTS DIVISION • UVALDE ROCK ASPHALT CO.

FROST BANK BUILDING • SAN ANTONIO, TEXAS • MAKERS OF VINA-LUX • AZROCK • DURACO • AZPHLEX





**THE TEXAS SOCIETY OF ARCHITECTS  
THE TEXAS REGIONAL DISTRICT ORGANIZATION OF  
THE AMERICAN INSTITUTE OF ARCHITECTS**

Sec. 34.66, P. L. & R.

U. S. POSTAGE

**PAID**

Houston, Texas

Permit No. 6061

**TEXAS ARCHITECT • 1200 BISSONNET • HOUSTON, TEXAS**